

# SRD01C05 DAMPER ACTUATOR



## APPLICATION

SRD01C05 is designed to drive the damper directly and control the airflow of the pipe. The actuator is driven by the motor and returned by spring.

## TECHNICAL SPECIFICATIONS AND DATA

MODEL	SRD01C05-24	SRD01C05-110	SRD01C05-120	SRD01C05-220	SRD01C05-230
POWER SUPPLY	24VAC±10%; 50/60Hz	110VAC±10%; 50/60Hz	120VAC±10%; 50/60Hz	220VAC±10%; 50/60Hz	230VAC±10%; 50/60Hz
POWER	6.5W				
TORQUE	≥0.5N·m (See Fig.1)				
ROTATION ANGLE	90°				
DRIVE TYPE	Single phase motor, spring return				
OPERATION DURATION	Motor drives: 1min after power on; Spring return: 10s after power off				
AMBIENT TEMP.	0~60°C(32~140°F)				
ASSEMBLAGE	Assemble the actuator with the damper axle				
NET WEIGHT	500g				
IP CLASS	IP20				

\* Special voltage can be made by order.

## WIRING

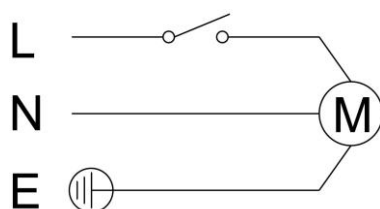


Fig. 1

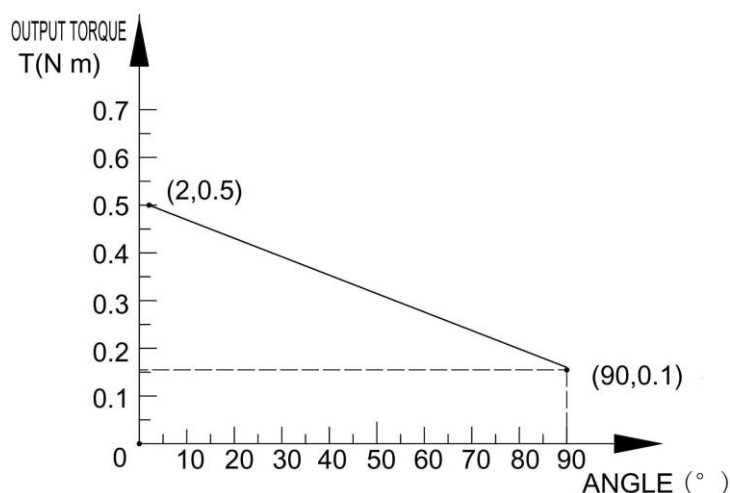


Fig.2

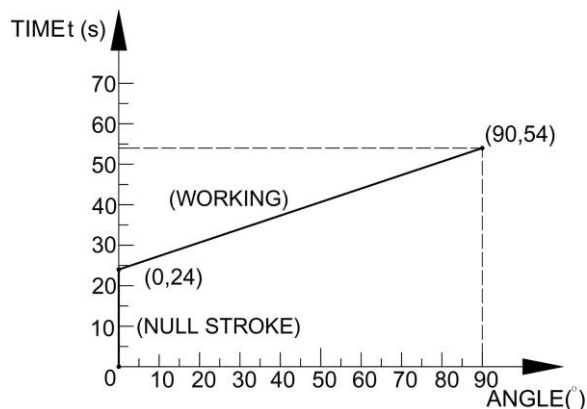


Fig.3

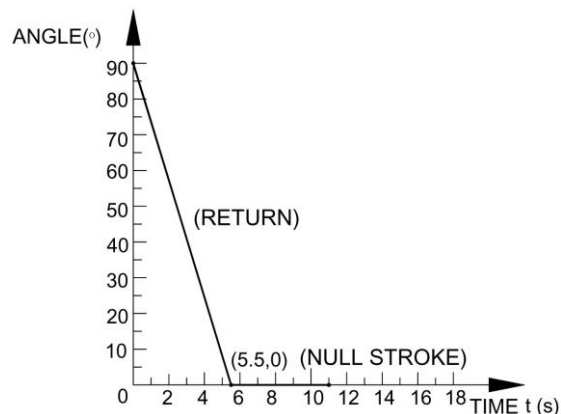
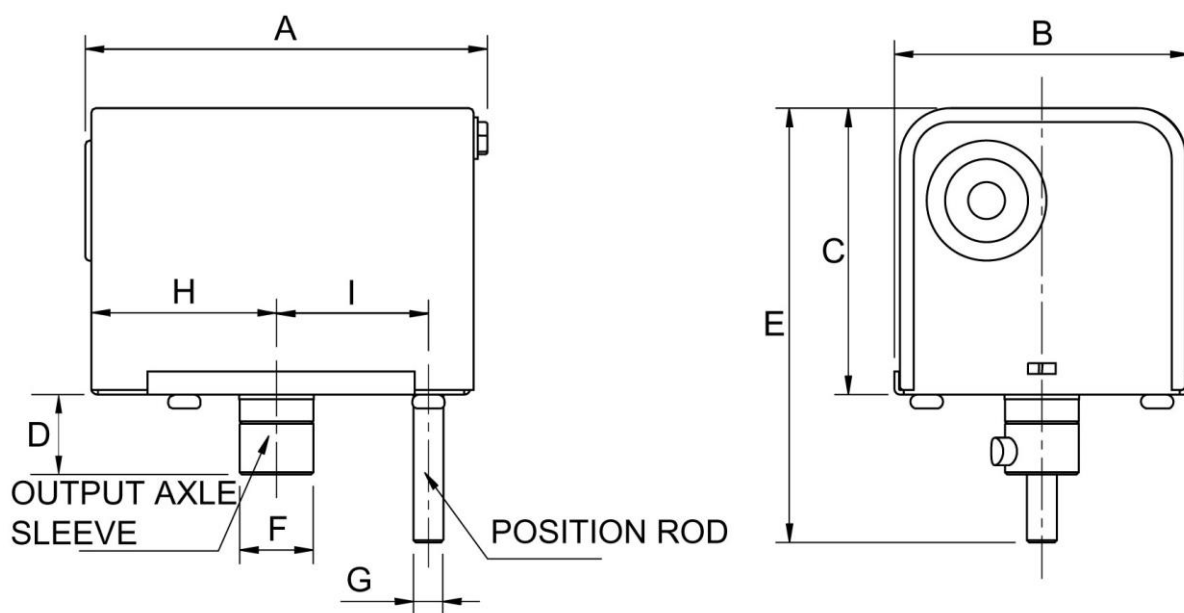


Fig.4

## INSTALLATION

The actuator axle sleeve can be mounted on the damper shaft directly. You can drill a hole on the side surface of the damper shaft, (the diameter of hole is the same as of the position rod. As for the dimension between the hole and the damper shaft, please refer to the dimension between the actuator output axle and the position rod), then insert the location rod into the hole and connect the actuator output axle and the damper shaft.



## DIMENSIONS

DIMENSIONS	A	B	C	*D	*E	*F	G	H	I
(mm)	87.5	65	62.5	17.5	94.5	16	6.5	42	33

The dimensions with “\*” are only for reference, they can be changed as per customers' requirements according to the dimensions of the damper shaft.