

SRW03 SERIES WIRELESS CONTROL UNIT

DESCRIPTION

SRW03 series wireless control unit is used in central heat/cool air conditioning system. According detecting and comparing the set temperature and ambient temperature, the thermostat controls the active of heat/cool zone valve in central air-conditioner.

There are several control types: electric on/off type (SRW03D), floating type (SRW03F). The actuator can be matched with SBV01 ball valve, it can supply a signal to reposition the zone valve when the power is turned on or cut off.



CHARACTERISTICS

- The thermostat (remote) and the actuator (receiver) are relatively independent; and they communicate by radio wave.
- Overtime output signal will be cut off by overtime protection
- Return function when power is on or shut off
- Super low power consumption and status memory of last operation.
- Protection for instantaneous impulse and current surge.
- Display ambient temperature, fan speed, mode.
- Combined receiver and actuator, easy to install and get wiring.
- The thermostat can be wall mounted or used as a remote.
- Batteries inside have one year's normal useful life.
- PC+ABS plastic housing, apply to UL94V-0.

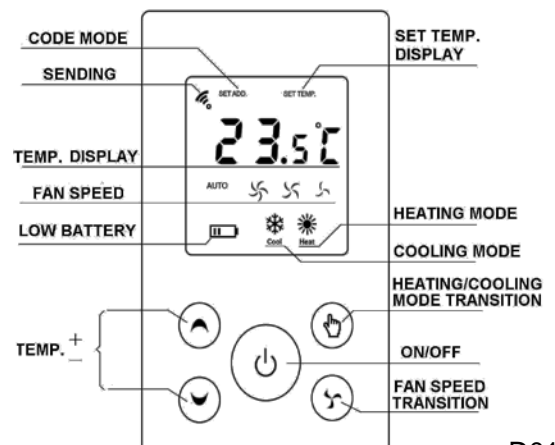



TECHNICAL DATA

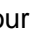




THERMOSTAT (REMOTE)		ACTUATOR (RECEIVER)	
POWER SUPPLY	3Vdc (2 x AAA batteries)	POWER SUPPLY	AC220V/230V 50/60Hz
POWER CONSUMPTION	Standby mode<0.18mW	MOTOR CONSUMPTION	5VA
TRANSMITTING FREQUENCY	315MHz	POWER CONSUMPTION	2.5VA (unloaded)
TRANSMITTING POWER	10mW	RECEIVING FREQUENCY	315MHz
ADJUSTING MODE	ASK	RECEIVING PRECISION	Better than -98dB
ANTENNA	Internal antenna	CONTROL PRECISION	±0.5 °C/±
DISPLAY PRECISION	0.2 °C/0.5	OUTPUT (FAN)	AC220V/230V 2(1)A
TEMP. CONTROL RANGE	10~30 °C/50~86	RETURN TIME /OVERTIME PROTECTION	120s
TEMP. DISPLAY RANGE	0~40 °C/32	TORQUE	≥2Nm
		ROTATABLE ANGLE	0~90°
DIMENSIONS	115 X 72 X 19 (mm)	OPERATION TIME	18S(50Hz)/15S(60Hz), Optional: 36S(50Hz)/30S(60Hz)
EFFECTIVE DISTANCE	Less than 10m (without hindrance)		
AMBIENT TEMP. & HUMIDITY	0~40 °C Max. 90%RH non-condensation		
STORAGE TEMP.	-20 ~ 60 °C		

APPLICATION

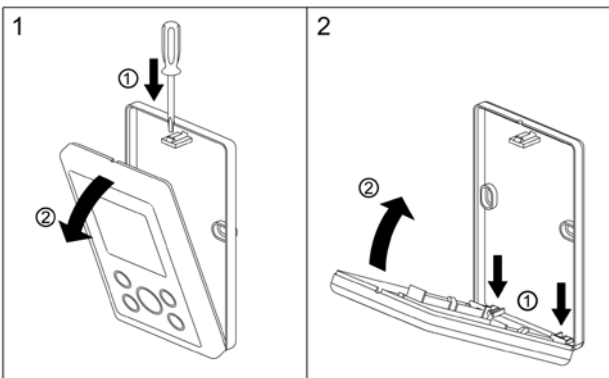
1. **On/off:** The thermostat will go through self-test status and turn on after the batteries are installed. The ON/OFF mode switched after every effective press on button "⏻". All LCD display will be turn off after power is off.
2. **Temp. setting:** Press and release button "▲" or "▼", the set temp. will increase or reduce 0.2 °C/0.5F with every press. If press the buttons continuously, the set temp. will keep increasing or reducing by 0.2 °C/0.5F. Release the button when it gets ideal. The symbol "SET TEMP." will be displayed



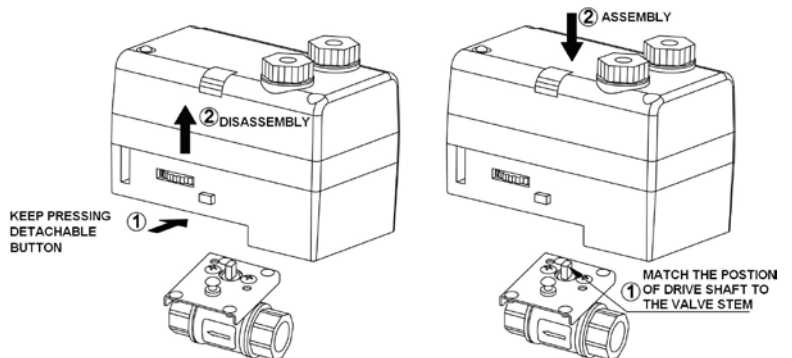
during the setting. When the symbol “” shown, it means the order has been sent.

3. **Fan speed setting:** There are four working states: “AUTO”, “”, “” or “”.
4. **Heating/cooling mode switch:** The states will be switched with every effective press. When the symbol “” shown, it means the order has been sent.
5. **Code:** If different remotes are mixed up, they need to be coded again. The steps are as follow:
 - 5.1. The actuator (receiver) will go through self-test status (about 10 seconds) and sound “Beep” after power is on, and then it stays in Standby mode. Press the Code Button (a little hole) or use the special code matcher, and the actuator will start sounding in every 5 seconds (lasts about 15 minutes). It means the actuator is in code mode. The code mode will be end after a successful code match.
 - 5.2. Turn on the thermostat, after it finished self-check status, press and release the Code Button on the back side of the actuator (use something thin but firm, like iron wire), the symbol “SET ADD.” will be shown. If the symbol “” shown means the code order has been sent. If the actuator (receiver) sounds a long “Beep”, it means the code has been successful set. When power is on, please press any button on the thermostat to activate MCU first, then, press the Code Button, for the Code button can activate MCU.
6. **Receiver:** When the receiver get signal from the remote, it sounds “Beep” for noticing. If the current signal is the same as former one, the receiver won’t sound. The remote will send one action signal for four times in a short period to avoid signal receival failure.
7. **Installation:** The installation of receiver and remote should avoid metal things, in case they affect radio transmission. The straight distance between remote and receiver should be kept in 10 meters.
8. **Notice:** If the unit will not be used for a long time, please remove the batteries in the thermostat (remote) and cut off power supply of actuator (receiver) to prolong the useful life and prevent battery leakage.

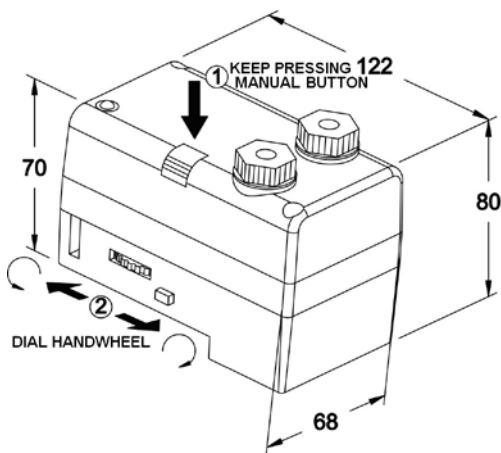
ASSEMBLY/DISASSEMBLY



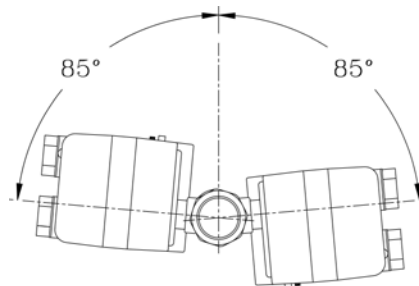
ACTUATOR WIRING DIAGRAM



MANUAL SWITCH



INSTALLATION ANGEL



WIRING DIAGRAM OF ACTUATOR

