

SBA01 SERIES BALL VALVE ACTUATOR

DESCRIPTION

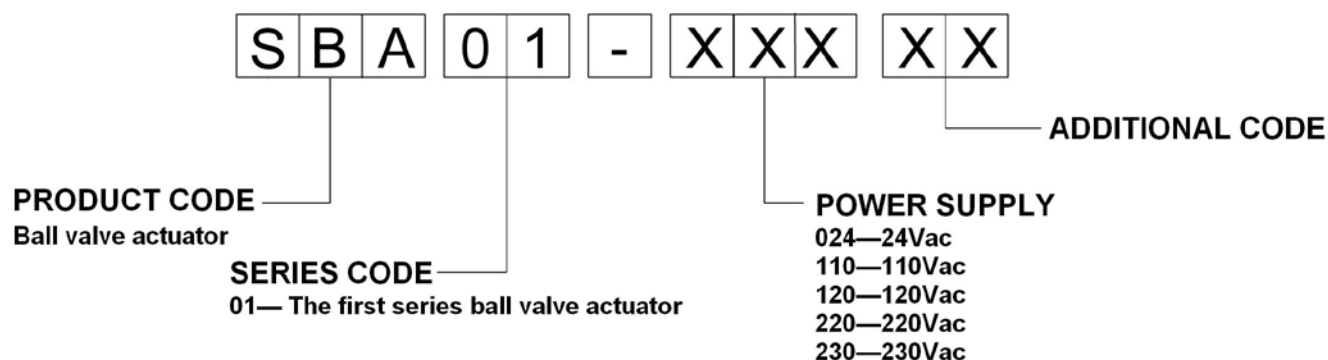
SBA01 series ball valve actuator is using bi-directional motor. Matching with SBV series ball valve, it is mainly used in central air-conditioning system, heating system, water treatment, and production industry to control the flow of chilled/hot medium



CHARACTERISTIC

- Bi-directional AC motor
- On/off type or floating (PID adjusting) type
- Built-in micro-switch for power saving
- With manual switch
- High control precision and sensitivity
- Low noise level, and more reliable
- Fireproof ABS engineering plastic, measure up UL94V-0 standard
- Detachable design, easy to install and maintain

SBA01 SERIES BALL VALVE ACTUATOR MODEL SELECTION

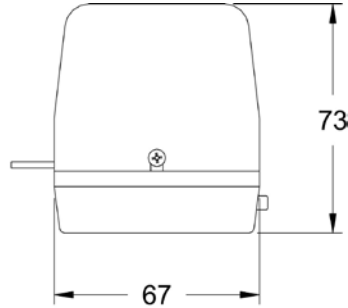
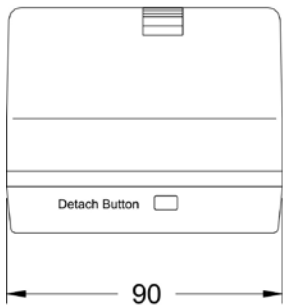


SPECIFICATIONS AND DATA

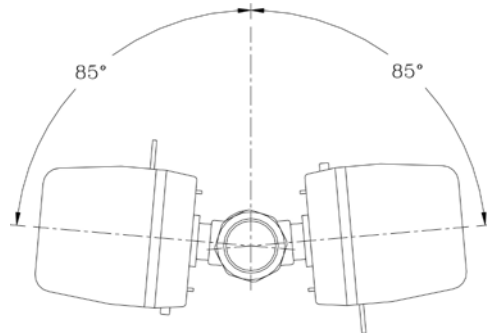
MODEL	SBA01-024	SBA01-110	SBA01-120	SBA01-220	SBA01-230
POWER SUPPLY	24Vac	110Vac	120Vac	220Vac	230Vac
POWER CONSUMPTION	3VA	5VA			
CURRENT FREQUENCY	50/60Hz				
OPERATION TIME	18s (50Hz) / 15s (60Hz)				
	36s (50Hz) / 30s (60Hz)				
NORMAL TORQUE	≥2Nm				
ROTATABLE ANGEL	0°~90°				
CONNECTING WIRES	0.5~1 mm ²				
MATERIAL	HOUSING	Fireproof ABS engineering plastic			
	CHASSIS	PC+ABS engineering plastic			
	GEAR	POM (polyoxymethylene) + brass			
	REDUCER PLATE	Stainless steel sheet			
OPERATION TEMP.	0~40℃				
STORAGE TEMP.	-20~65℃				

▲ All the data will be changed without prior notice.

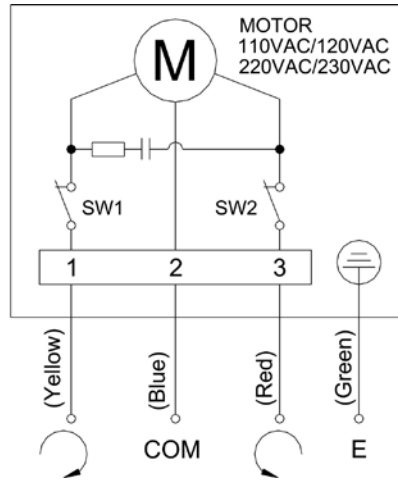
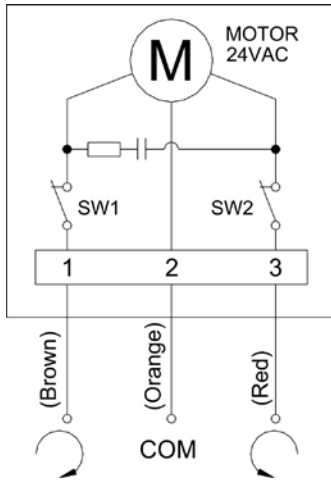
DIMENSIONS



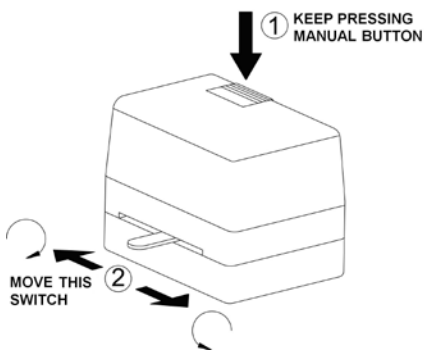
INSTALLATION ANGLE



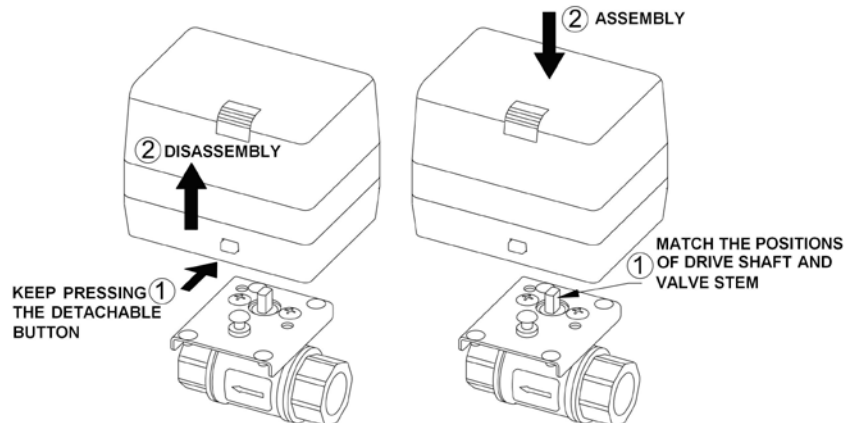
WIRING



MANUAL SWITCH



ASSEMBLY/DISASSEMBLY



NOTICE:

- When the valve is installed vertically on pipe, please prevent drip into the actuator.
- The actuator can not be covered by insulative material.

WARNING:

- Cut off power supply when repairing or maintaining.
- Do not connect or disconnect wire when power is on.