

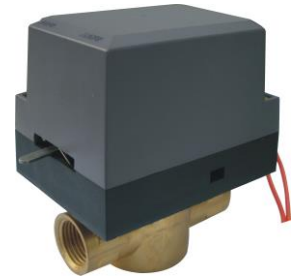
# SR02 SERIES DETACHABLE MOTORIZED VALVES

## DESCRIPTION

SR02 series motorized valves are used to control the opening or closing for the pipe in the chilled/hot water system so to control the room temperature. The valve is driven by hysteresis synchronous motor with spring return. It is normally close ball valve.

When the thermostat is working, it will provide an opening signal, and the motorized valve will be opened. Then the chilled/hot water enters the coil and the coil starts to supply the cold/warm air to the room. When the room temperature rises to the set point, the thermostat will cut the valve power off. At the same time the valve will be closed by return spring and shut off the water to the coil. The room temperature will be kept in the setting range all the time through the opening and closing the valve.

SR02 series motorized valves have three types: normally close 2-way normally open 2-way and mixing 3-way. They have four sizes: 1/2", 3/4", 1" and 1 1/4". There are also different pipe connection for customers' selection: BSP(G), NPT(N), SWEAT(S), INVERTED FLARE(F), etc. The valves models with KA behind are equipped with auxiliary switches to control other devices and meet different requirements.



## MATERIAL AND TECHNICAL DATA

MATERIAL	VAVLE BODY	Forged brass
	SEAL	Nitrile -butadiene rubber (NBR)
	CHASSIS & COVER	High strength fireproof ABS engineering plastic
MEDIUM		Chilled/hot water
FLUID TEMPERATURE		2~94°C (36~201°F)
AMBIENT TEMPERATURE		0~60°C (32~140°F)

## SRA02 ACTUATOR TECHNICAL DATA

MODEL	RATED VOLTAGE	VALVE APPLICATION	POWER	IP CLASS	DRIVING DEVICE	OPERATING DURATION
SRA02-220C2	AC220V±10%	Normally close 2-way	6.5W	IP20	synchronous drives, spring return	Motor drive: 15s Spring return: 5s
SRA02-220O2	AC220V±10%	Normally open 2-way				
SRA02-220B3	AC220V±10%	Mixing 3-way				

The first additive code "S" behind the model name means this model has auxiliary switch (250Vac/3A). If the first additive code is omitted, that means standard model.

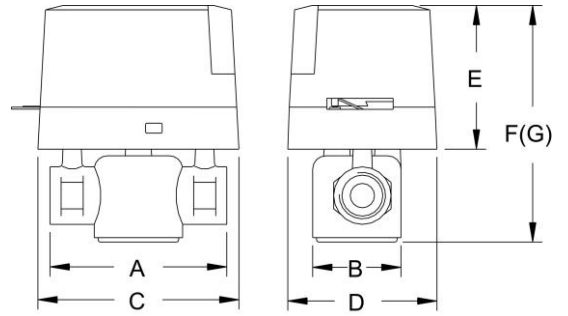
The second additive code "A" behind the model name means this model is match for DN32 valve. If the second additive code is omitted, that means this model match for DN15, DN20 or DN25 valve.

## SRV02 VALVE TECHNICAL DATA

MODEL	VALVE TYPE	Kvs	SIZE	CLOSING-OFF PRESSUE	OPERATING PRESSURE RATING	ACTUATOR APPLICATION		
SRV02-21520GC	NC 2-way	2.0	G1/2	0.25MPa	2.1MPa	SRA02-220C2		
SRV02-21532GC		3.2		0.20MPa		SRA02-220O2		
SRV02-21532GO	NO 2-way	3.2		0.20MPa		SRA02-220B3		
SRV02-31532GB	Mixing 3-way	3.2		0.20MPa		SRA02-220C2		
SRV02-22032GC	NC 2-way	3.2	G3/4	0.20MPa		2.1MPa	SRA02-220O2	
SRV02-22046GC		4.6		0.15MPa			SRA02-220B3	
SRV02-22046GO	NO 2-way	4.6		0.15MPa			SRA02-220C2	
SRV02-32046GB	Mixing 3-way	4.6		0.15MPa			SRA02-220O2	
SRV02-22557GC	NC 2-way	5.7	G1	0.10MPa			2.1MPa	SRA02-220B3
SRV02-22568GC		6.8		0.08MPa				SRA02-220C2
SRV02-22568GO	NO 2-way	6.8		0.08MPa				SRA02-220O2
SRV02-32568GB	Mixing 3-way	6.8		0.08MPa				SRA02-220B3A
SRV02-232A0GC	NC 2-way	10.0	G1 1/4	0.08MPa	2.1MPa			SRA02-220C2A
SRV02-232A0GO	NO 2-way	10.0		0.08MPa				SRA02-220O2A
SRV02-33284GB	Mixing 3-way	8.4		0.08MPa				SRA02-220B3A

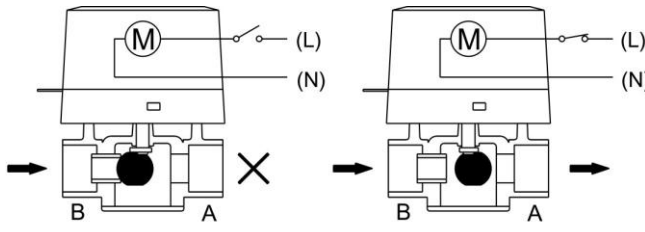
# DIMENSIONS

Model	Dimensions (mm)						
	A	B	C	D	E	F (2-way)	G (3-way)
1/2" 2-way	80	40	91	68	65	108	-
1/2" 3-way	80	40	91	68	65	-	118
3/4" 2-way	89	44	91	68	65	108	-
3/4" 3-way	89	44	91	68	65	-	120
1" 2-way	93	44	91	68	65	110	-
1" 3-way	93	44	91	68	65	-	126
1 1/4" 2-way	105	54	91	68	65	124	-
1 1/4" 3-way	105	54	91	68	65	-	139

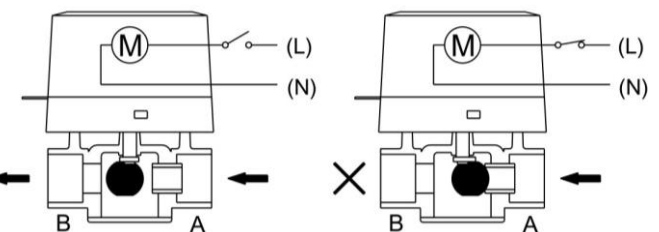


# WORKING DIAGRAM

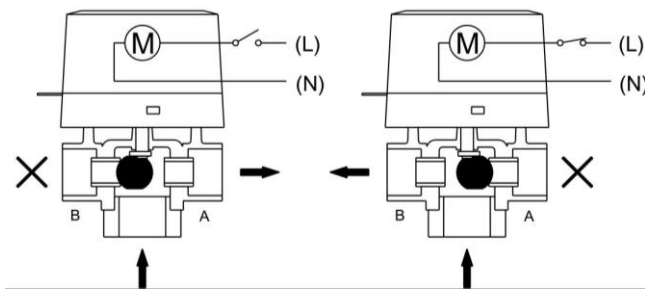
## Normally close 2-way valve



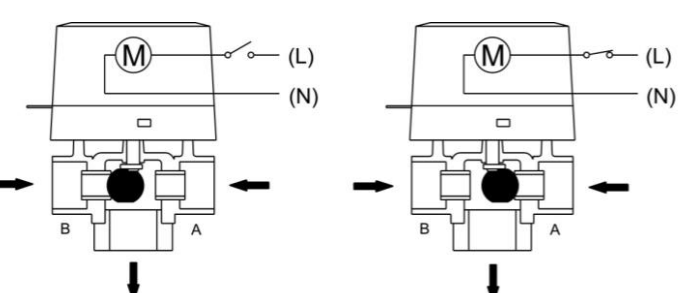
## Normally open 2-way valve



## Diverted 3-way valve

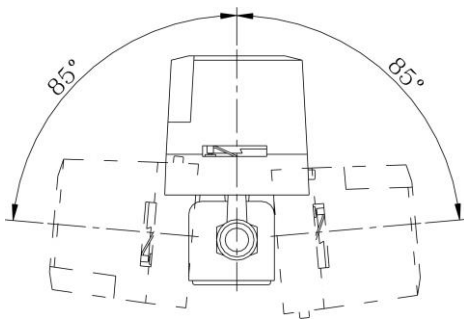


## Mixing 3-way valve

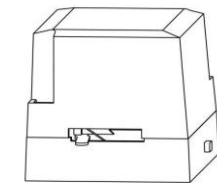


# INSTALLATION

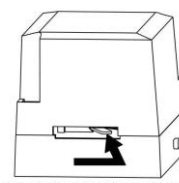
## Installation position:



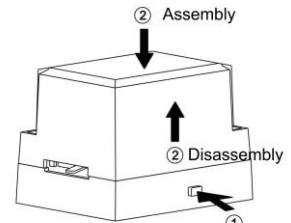
## Assembly/Disassembly indication



The normal position of the lever is at position "AUTO".



Push the lever to position "MANU" and fix it in the notch.



Push the detachable button and assembly or disassembly the actuator

**\* Notice:** When the valve is mounted on vertical pipe, it must be prevented from dripping. If the valve is used in high-rise building, please install pressure reducing valve on branch pipe of ground floor.



**Notice:** After installation, must remove the lever stopper before the first use.

