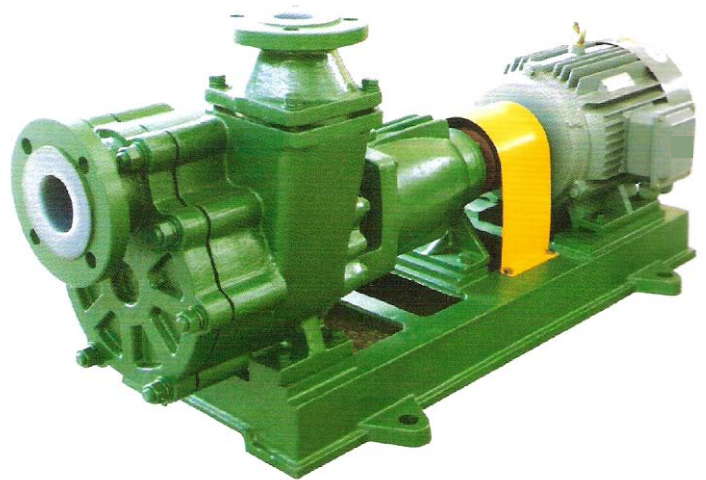




FSB Self-Priming Pump

• Typical Application •

Petrochemical, Chemical Processing, Bulk Unload & Transfer, Plating Recirculation / Filtration, PCB Etching / Rinse, Fumes Scrubber, Waste Water Treatment, Electronics Manufacturing, Underground Storage Tank, Top Opening Tank, Sumps, Pharmaceutical & Photo Processing, And Any Hazardous Chemical Applications...

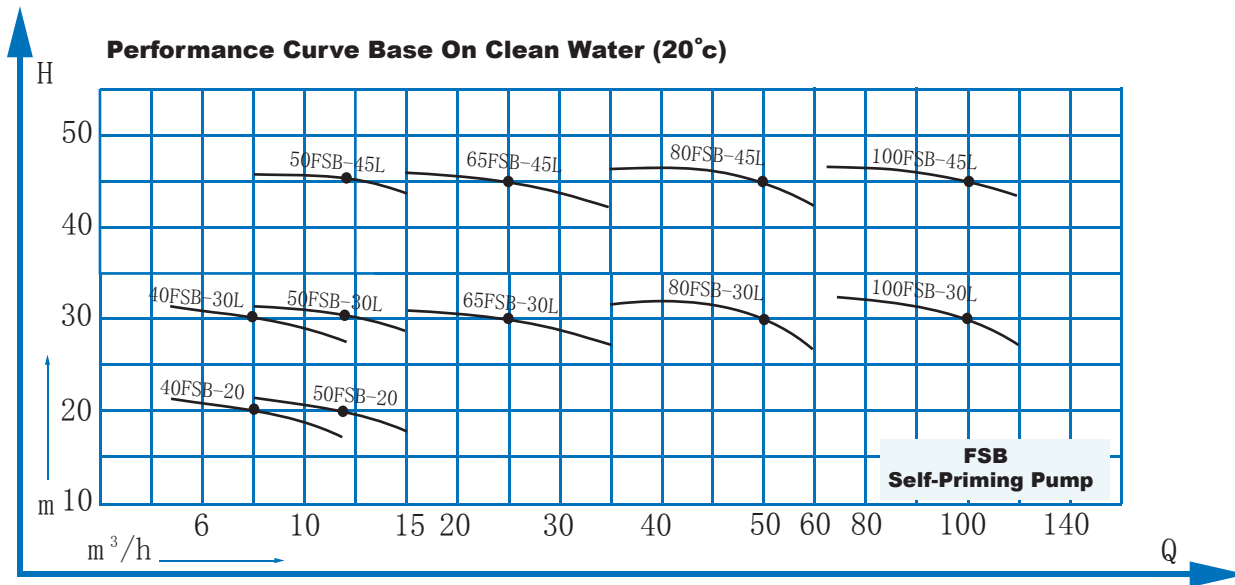


Flow (m³/hr)	1.5 - 110
Max. Head (m)	16 - 47
Temperature (°c)	-20 °c - 100 °c
Design	Direct Coupled, Back Pull Out End Suction Coupling.

Features PFA Lined

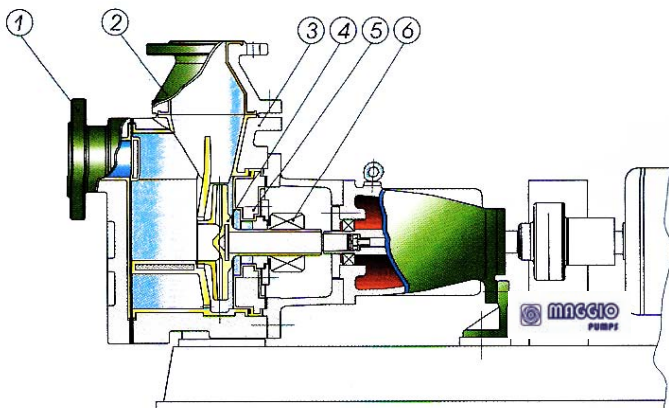
*PFA-Perfluoroalkoxy, Teflon-PFA

Performance Curve



Structure Diagram & Material

- 25FSB-20L
- 40FSB-20
- 40FSB-30L
- 50FSB-20
- 50FSB-30L
- 50FSB-45L
- 65FSB-30L
- 65FSB-45L
- 80FSB-30L
- 80FSB-45L
- 100FSB-30L
- 100FSB-45L



No	Structure	Material
1	Front Cover	PFA/HT200
2	Flange	PFA/HT200
3	Pump Body	PFA/HT200
4	Impeller	PFA-Teflon
5	Pump Cover	PFA-Teflon/HT200
6	Mechanical Seal	Silicon Carbide

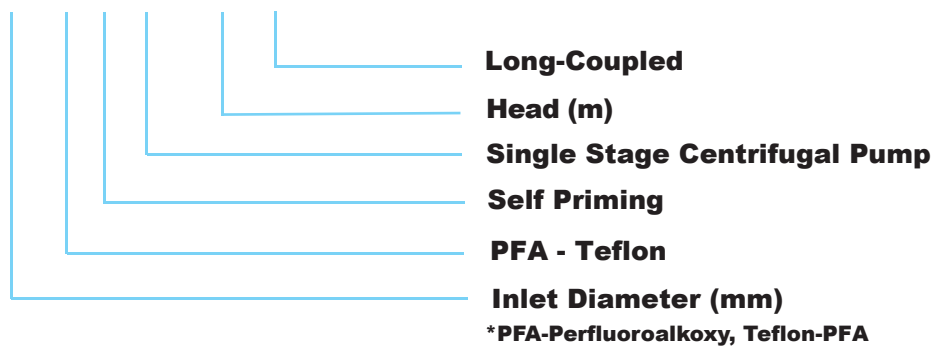
*PFA-Perfluoroalkoxy, Teflon-PFA

Note : All specifications subject to change without prior notice.



Type Keys

80 F S B - 30 L



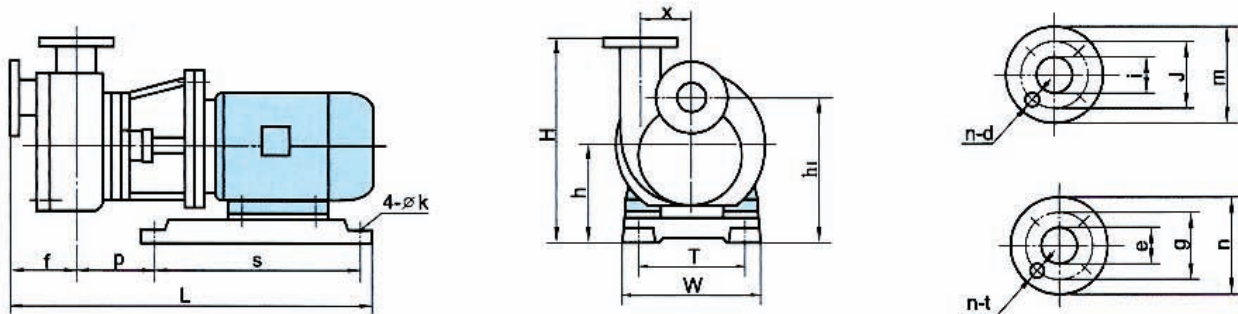
Specifications

No	Model	Flow Rate (m ³ /hr)	Head (m)	Efficiency (%)	Priming Time (S)	NPSH (m)	Inlet/Outlet Diameter (mm)	Speed (r/min)	Power (kw)	Suction Lift (m)	kg
1	25FSB-20L	1.5	19	10	180	3.0	25X25	2900	2.2	1	65
		*3.6	18	20							
		6	16	30							
2	40FSB-20	5	22	35	180	3.0	40X50	2900	3	3	150
		*8	20	42							
		12	17	40							
3	40FSB-30L	5	32	24	150	3.5	40X50	2900	4	3	160
		*8	30	48							
		12	28	45							
4	50FSB-20	8	22	35	180	3.0	50X50	2900	3	3	160
		*12	20	42							
		15	17	40							
5	50FSB-30L	8	32	24	150	3.5	50X50	2900	4	3	160
		*12	30	48							
		15	28	45							
6	50FSB-45L	8	47	24	150	3.5	50X32	2900	7.5	3	210
		*12	45	35							
		15	43	32							
7	65FSB-30L	15	32	40	200	4.0	65X50	2900	7.5	3	210
		*25	30	55							
		35	27	48							
8	65FSB-45L	15	47	30	180	4.0	65X40	2900	11	3	300
		*25	45	42							
		35	38	44							
9	80FSB-30L	35	32	54	150	4.5	80X65	2900	11	3	284
		*50	30	58							
		60	25	48							
10	80FSB-45L	35	47	45	180	4.5	80X65	2900	15	3	330
		*50	45	53							
		60	42	46							
11	100FSB-30L	65	32	54	250	6.0	100X80	2900	18.5	3	300
		*100	30	60							
		110	26	54							
12	100FSB-45L	65	46	48	250	6.0	100X80	2900	30	3	500
		*100	45	55							
		110	40	48							

Note : All specifications subject to change without prior notice.

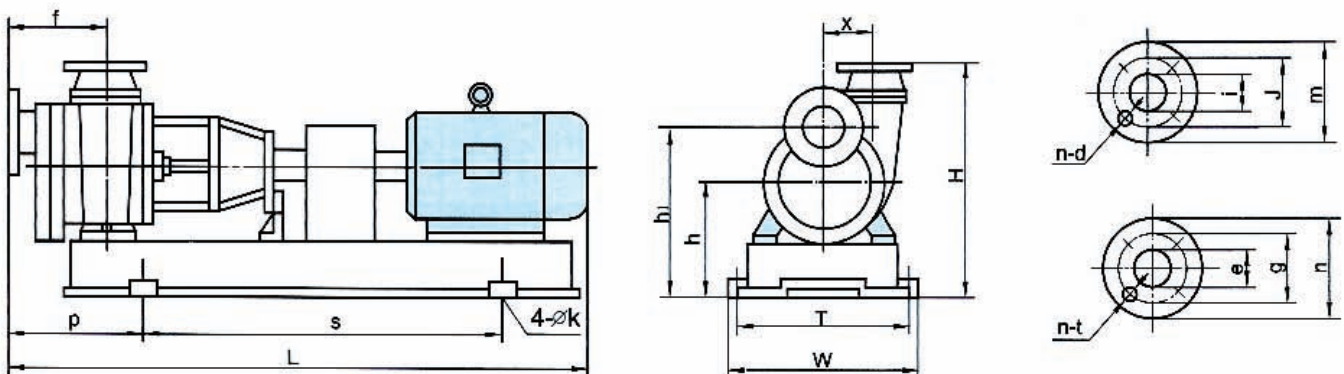
Dimensions

● 40FSB-20 ● 50FSB-20



Range	Model	Install Dimension											Inlet Flange				Outlet Flange			
		L	S	P	f	W	T	H	h	h1	x	k	i	j	m	n-d	e	g	n	n-t
Closed-Coupled	40FSB-20	590	310	160	110	220	170	305	140	240	65	12	40	100	130	4-13	40	100	130	4-13
	50FSB-20	590	310	160	110	220	170	305	140	240	65	12	40	100	130	4-13	50	100	130	4-13

● 25FSB-20L ● 40FSB-30L ● 50FSB-30L ● 65FSB-30L ● 80FSB-30L ● 50FSB-45L ● 65FSB-45L ● 80FSB-45L
● 100FSB-30L ● 100FSB-45L



Range	Model	Install Dimension											Inlet Flange				Outlet Flange			
		L	S	P	f	W	T	H	h	h1	x	k	i	j	m	n-d	e	g	n	n-t
Closed-Coupled	25FSB-20L	750	440	232	110	280	240	306	162	240	60	16	25	85	120	4-13	25	85	120	4-13
	40FSB-30L	1150	590	290	205	390	330	508	232	342	90	25	40	125	165	4-18	50	125	165	4-18
	50FSB-30L	1150	590	290	205	390	330	508	232	342	90	25	50	125	165	4-18	50	125	165	4-18
	65FSB-30L	1230	650	355	250	450	380	520	232	342	98	25	65	145	185	4-18	50	125	165	4-18
	80FSB-30L	1240	720	330	210	485	435	520	260	370	110	24	80	160	200	8-18	65	145	185	4-18
	50FSB-45L	1190	650	320	200	450	380	610	260	410	112	25	50	125	165	4-18	32	100	135	4-18
	65FSB-45L	1400	720	321	223	485	435	642	260	425	114	25	65	145	185	4-18	40	110	150	4-18
	80FSB-45L	1370	720	370	260	485	435	590	260	440	165	24	80	160	200	8-18	65	145	185	4-18
	100FSB-30L	1380	720	430	290	485	435	695	280	460	128	25	100	180	220	8-18	80	160	200	4-18
	100FSB-45L	1758	940	460	285	610	540	715	300	480	130	25	100	180	220	8-18	80	160	200	4-18

Note : All specifications subject to change without prior notice.