

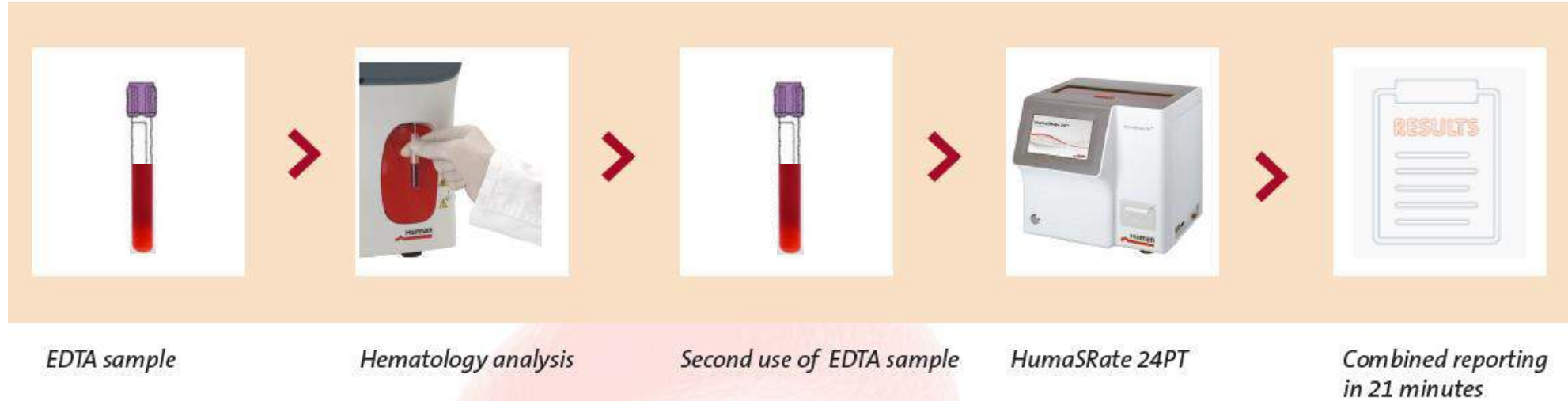
HumaSRate 24^{PT}

Unique ESR Analyzer **without** consumables!



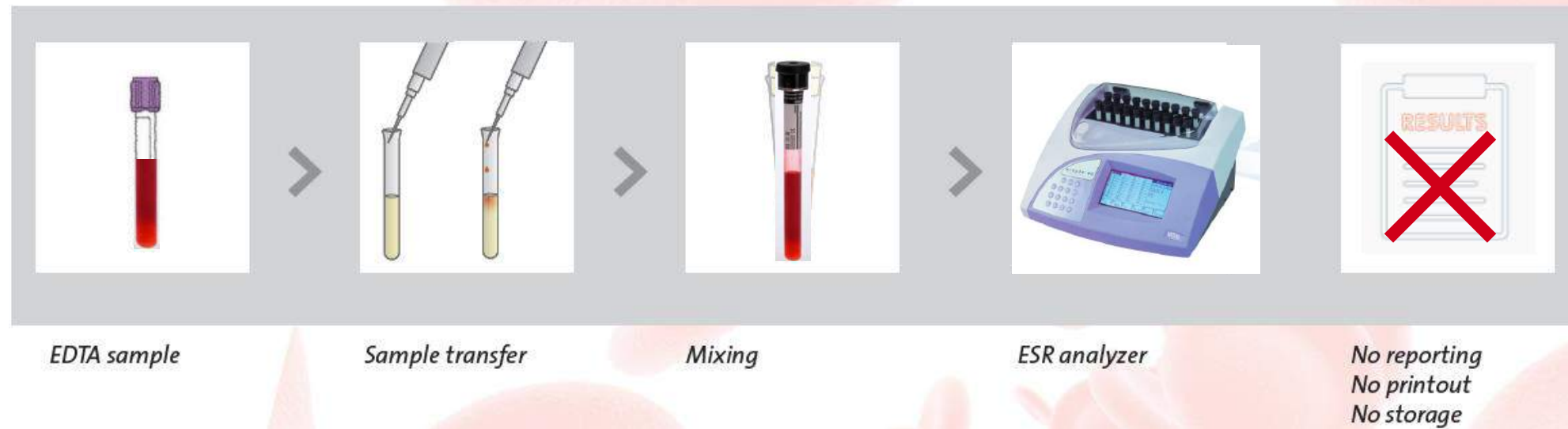
Set new standards in ESR testing with EDTA tubes

Workflow efficiency with EDTA tubes



Cost efficient,
- no ESR tube
- no transfer of blood
- no risk of contamination

ESR on conventional analyzer – inefficient many manual steps necessary



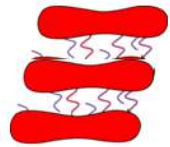
Erythrocyte sedimentation occurs in 3 phases



Fresh blood

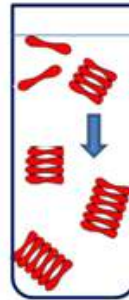
Agglutination 0...10 min

Phase 1



Sedimentation 5...15 min

Phase 2



Packing 15...60 min

Phase 3



Westergren

– all 3 phases, 60 min recording time – special tubes

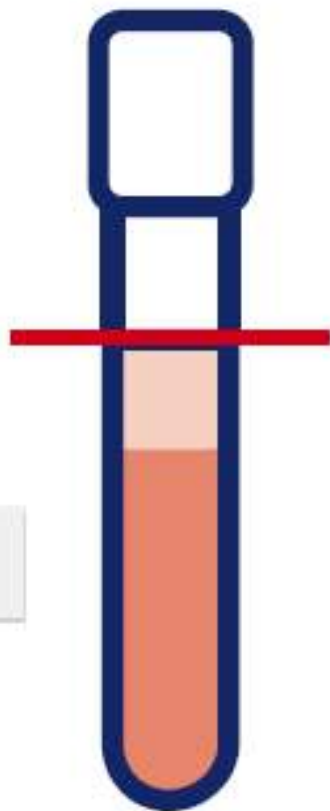
HumaSRate 24^{PT} – all 3 phases, 20 min – good corr.

Agglutination methods (Alifax, Alcor) – 20 sec. – low Westergren correlation

Continuous scan technology compensating reading errors

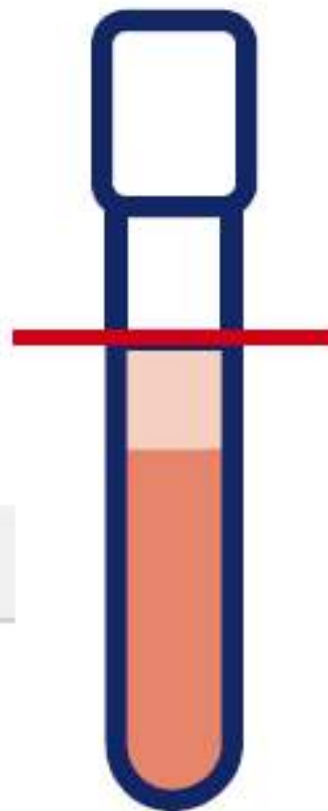
HumaSRate 24^{PT}

Scan every 10 sec



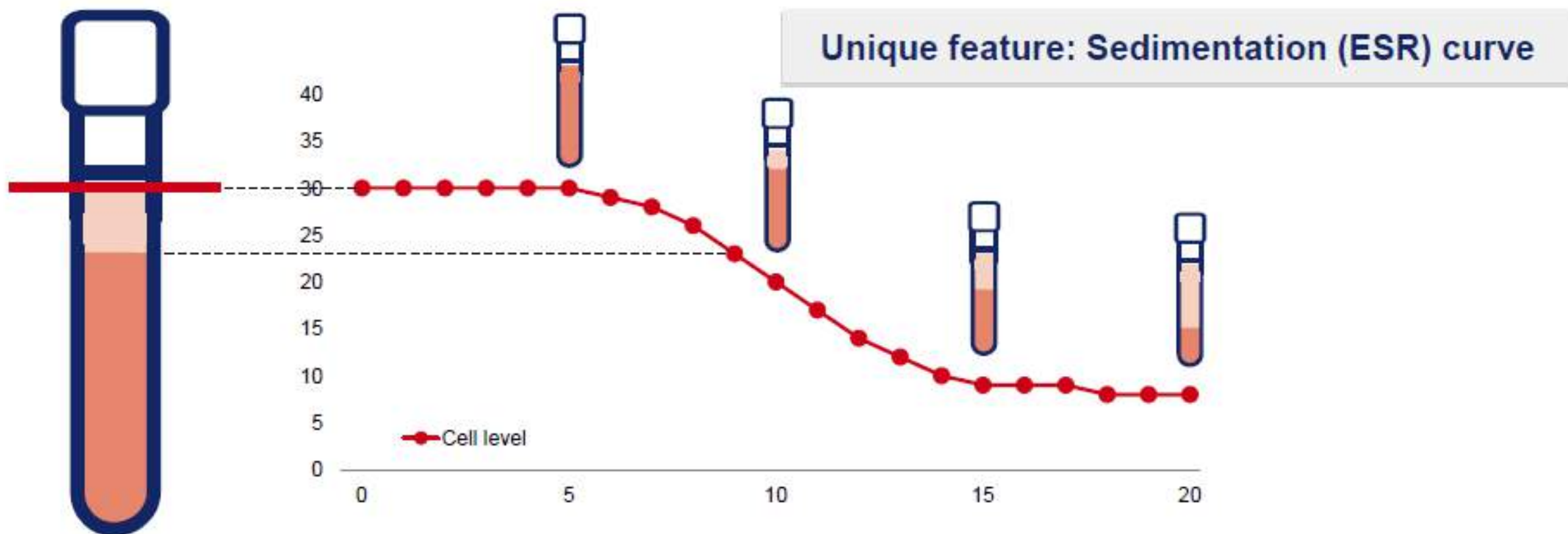
Ordinary analyzers

Scan after 20 min



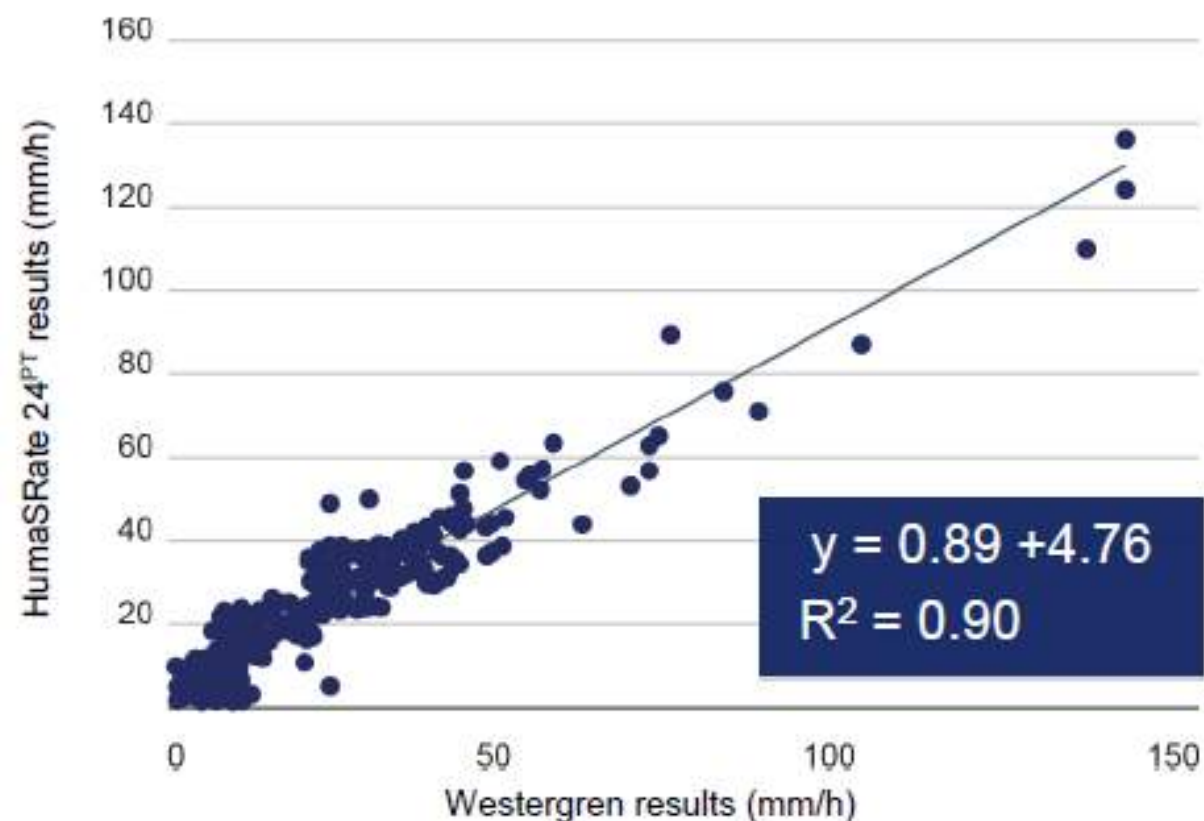
Continuous scan technology providing a sedimentation curve

HumaSRate 24^{PT}



Providing a true sedimentation rate with a good correlation to Standard Westergren method

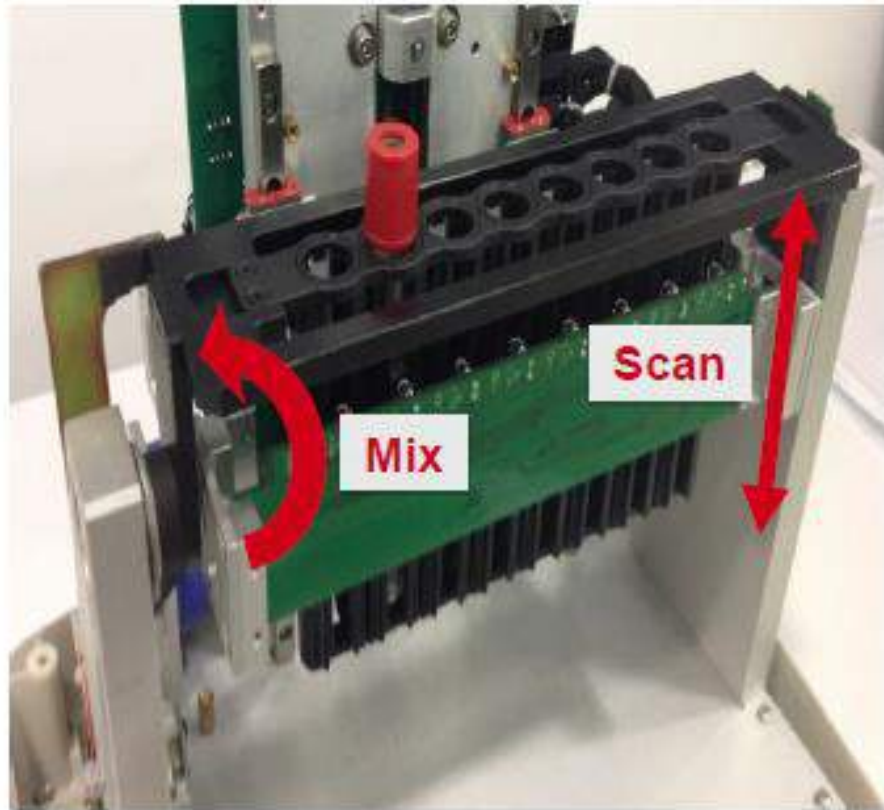
Excellent quality



Physicians get what they are used to, for a knowledgeable diagnosis

A unique instrument based on a continuous scan technology

High precision



- Reliable instrument
- Best detection technology on the market
- Integrated mixing
- 8 channels parallel

HumaSRate 24^{PT} system specifications

A fully automated, closed system



- ✓ **Barcode reader to identify sample ID measuring trough 3 layers of labels**
- ✓ **STAT samples anytime**
- ✓ **24 samples/hour**
- ✓ **20 minutes recording time**
- ✓ **Temperature correction**
- ✓ **Integrated printer**
- ✓ **LIS connectivity**
- ✓ **SMART-card to up-load 1200 tests**

HumaSRate 24^{PT} sets new standards in ESR automation



Automated system – one touch results

- Batch mode - up to 8 samples
- STAT - 20 min time to result
- Integrated mixer and printer
- Bidirectional LIS connectivity
- Identification of patient ID via integrated barcode reader
- Touch screen display with HUMAN software interface
- Storage capacity of 5,000 patient results
- Temperature correction according to Manley

Product overview - HumaSRate 24^{PT}



HumaSRate 24^{PT}

Fully automated erythrocyte sedimentation analyzer for use with Primary Tubes
Integrated mixer, printer, bar code reader, data storage, QC module and large display

“Consumables”

- HumaSRate 24^{PT} Smart Card (1200 Tests) for release of test credits, closed system
- EDTA HumaTube

Control Kit

HSRate Control (2x 2ml)*;
Unlimited-Use-Control, no consumption during daily use

Calibrator

HSRate-Calibrator *
HUMAN ESR calibrator tool

* available soon

One primary tube for ESR and CBC-count

A cost saving advantage!



CBC and ESR values, the standard screening parameters in hematology with ONE tube

ESR parameter on demand (even later, since EDTA blood is already collected)

- Cost saving strategy for the lab
- Pain/hassle avoiding strategy for the patient

Using primary tubes for ESR

Almost any EDTA tube can be used



- ✓ **HUMAN, BD-type**
 - 12 x 75 mm
 - 13 x 75 mm
 - 12 x 100 mm
 - 13 x 100 mm



- ✓ **Sarstedt S-Monovette**
 - 11 x 66 mm



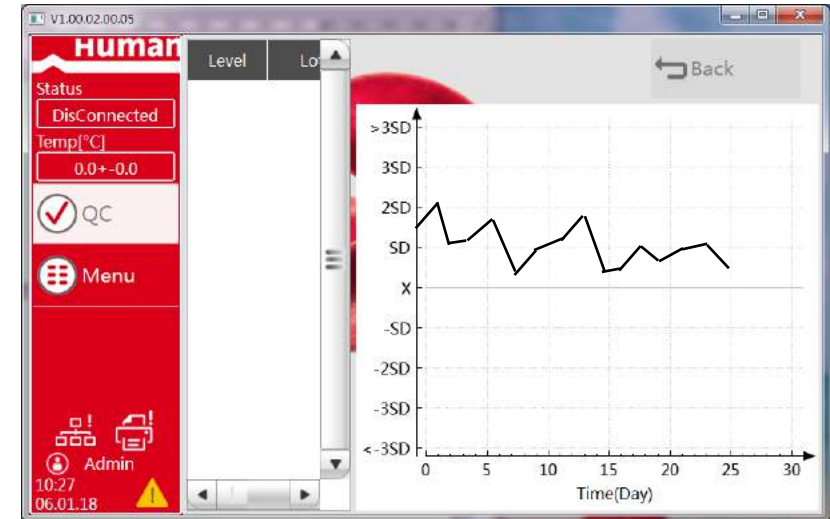
- ✓ **Kabe Primavette**
 - 11.5 x 66 mm

Set new standards in ESR quality control

Unlimited-Use-Control without consumption



- QC control for unlimited use - during the full shelf-life of 6 months
- Ready to use - no opening of the cap - no pipetting
- No consumption of the control material even at daily use
- Control can be applied any time in batch mode
- Supported by QC-software module – LJ diagram



Control consumption, 1.2 ml for citrate tube