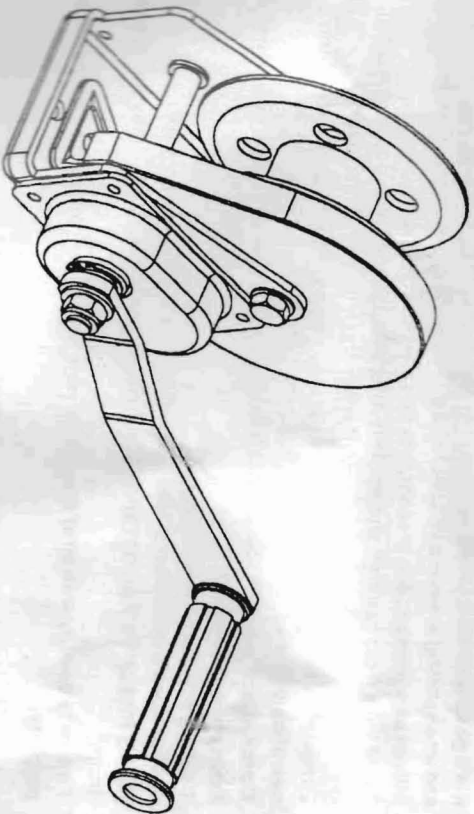


BRAKE HAND WINCH

Operational Instruction Manual

MODEL: QI-2



⚠ WARNING

1. Do not load winch beyond its rated capacity. Capacity rating is based on one layer of line around the drum. As line builds on drum, capacity decreases. Obtain cable and rope manufacturer's recommendation for size and type.
2. Do not use winch for lifting people or loads over people.
3. Learn how to use your winch. After installing your winch, take the time to practice using it so that you are comfortable with it when the need arises. Periodically, check the winch installation to assure that all bolts are tightly fitted.
4. If used as a vehicle winch, do not "move" your vehicle to assist the winch. The combination of the winch and the vehicle pulling together could overload the cable.
5. Keep winch area clear. Do not allow people to stay in the winch area. Do not stand between the winch and the load.
6. Inspect cable frequently. A frayed cable, or rope with broken strands should be replaced immediately. Do not operate winch if line is kinked, or shows any signs of corrosion, or weakness.
7. Keep hands and fingers clear of the winch and cable when using the winch.
8. Always check for correct direction of rotation before using the winch.
9. Do not hold on a trailer with winch cable. Tie down ropes or straps must be used to secure a load to the trailer.
10. Never hook the cable back onto itself, use a sling. Hooking the cable onto itself creates an unacceptable strain on the cable. (See Fig. A)
11. It is a good idea to lay a heavy blanket or jacket over the cable about 15 feet from the hook end when pulling in severe conditions. If a cable failure should occur, the weight of the cloth will act as a damper and prevent broken cable from whipping.
12. Avoid pulls from extreme angles. This may damage the cable and winch drum.
13. Never install winch in such a way that the warning and direction labels are obscured. Someone who has not read this manual may need to see them to understand the proper operation of the winch.
14. Do not attach winch to objects of unknown carrying capacity which may cause it to break loose during operation.
15. Operate winch by hand power only.
16. Always keep a minimum of four coils of cable on the drum for safe operation. This will supply friction for a proper anchor; otherwise the cable, or rope may pull loose from the drum.
17. Failure to comply with all of these warnings may cause serious injury and/or damage to property.

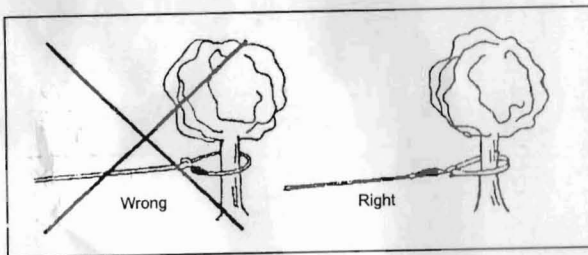
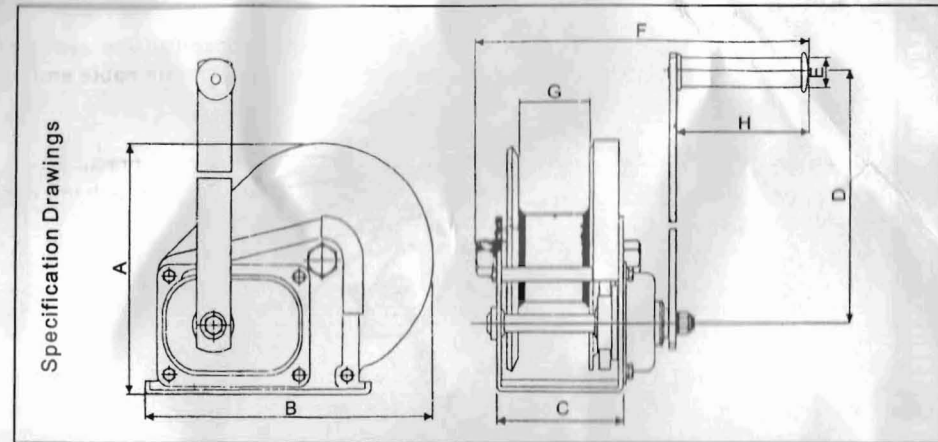


Fig. A

Notes: Now operator has to be trained Prior to use

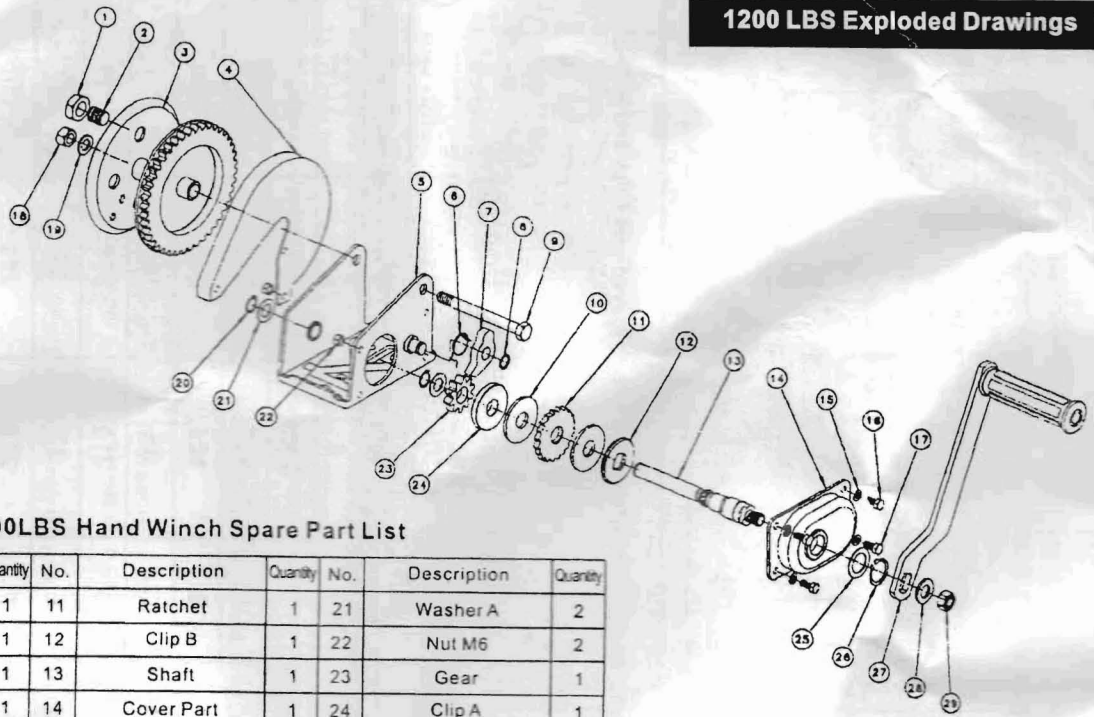


■ AS1418.2 compliance applies when fitted with Approved wire Rope and Fittings.

Brake Hand Winch Specifications

Model		1200 LBS	1800 LBS	2600 LBS
Safe Working Load	LBS	1200	1800	2600
Proof Test Load	KN	8	12.13	17.64
Gear Ratio		4.2:1	5:1	10:1
Dimensions (mm)	A	156	203	216
	B	184	256	293
	C	88	107	127
	D	210	319	319
	E	27	27	27
	F	272	283	305
	G	51	60	63
	H	109	109	109
Net weight	kg	3.7	7.7	10.1
Volume	cm	16×16×22	32X18.5X21	29.5X20X22.5

1200 LBS Exploded Drawings

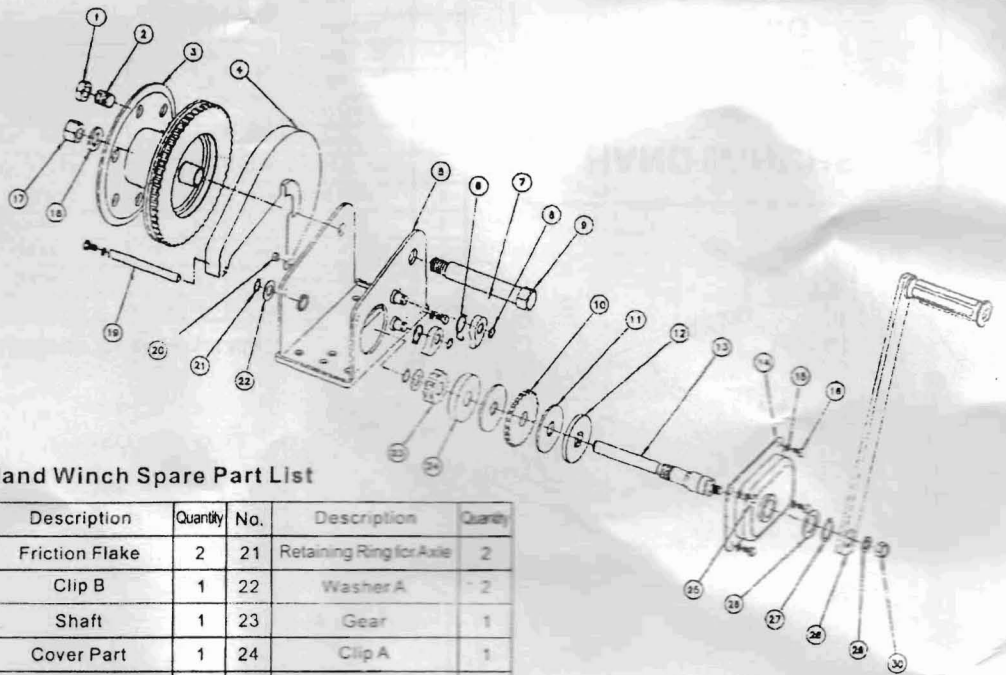


1200LBS Hand Winch Spare Part List

No.	Description	Quantity	No.	Description	Quantity	No.	Description	Quantity
1	Nut M14	1	11	Ratchet	1	21	Washer A	2
2	Screw	1	12	Clip B	1	22	Nut M6	2
3	Twine Drum	1	13	Shaft	1	23	Gear	1
4	Cover	1	14	Cover Part	1	24	Clip A	1
5	Mounted Base	1	15	Washer 6	4	25	Washer B	1
6	Snap Ring	1	16	Bolt M6×16	2	26	Retaining Ring for Axle 20	1
7	Ratchet Claw	1	17	Bolt M6×10	2	27	Rocher Arm	1
8	Retaining Ring for Axle 12	1	18	Nut M10	1	28	Washer 12	1
9	Bolt M10×100	1	19	Washer 10	1	29	Nut M12	1
10	Friction Flake	2	20	Retaining Ring for Axle 13	2			

-2-

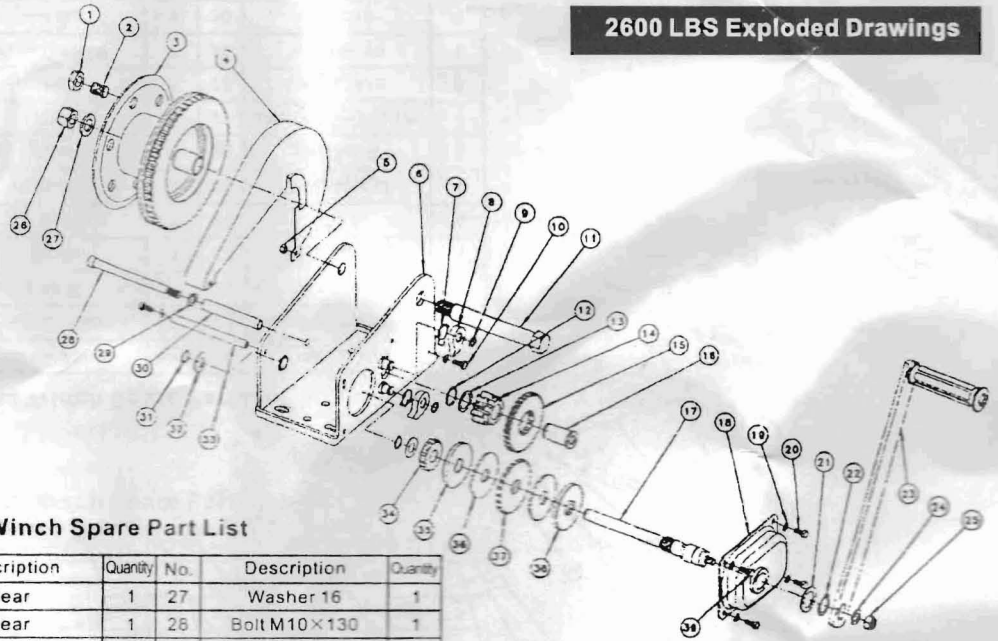
1800 LBS Exploded Drawings



1800LBS Hand Winch Spare Part List

No.	Description	Quantity	No.	Description	Quantity	No.	Description	Quantity
1	Nut M16	1	11	Friction Flake	2	21	Retaining Ring for Axle	2
2	Screw	1	12	Clip B	1	22	Washer A	2
3	Twine Drum	1	13	Shaft	1	23	Gear	1
4	Cover	1	14	Cover Part	1	24	Clip A	1
5	Mounted Base	1	15	Washer 6	5	25	Bolt M6×12	1
6	Snap Ring	2	16	Bolt M6×12	5	26	Washer B	1
7	Ratchet Claw	2	17	Nut M16	1	27	Retaining Ring for Axle	1
8	Retaining Ring for Axle 12	2	18	Washer 16	1	28	Rocher Arm	1
9	Shaft	1	19	Support Rod	1	29	Washer 10	1
10	Ratchet	1	20	Nut M6	1	30	Nut M10	1

-3-



-4-

2600 LBS Hand Winch Spare Part List

No.	Description	Quantity	No.	Description	Quantity	No.	Description	Quantity
1	Nut M16	1	14	Gear	1	27	Washer 16	1
2	Screw	1	15	Gear	1	28	Bolt M10×130	1
3	Twine Drum	1	16	Shaft	1	29	Washer 10	1
4	Cover	1	17	Shaft	1	30	Support Pipe	1
5	Nut M6	1	18	Cover Part	1	31	Retaining Ring for Axle15	2
6	Mounted Base	1	19	Washer 6	6	32	Washer A	2
7	Snap Ring	2	20	Bolt M6×10	3	33	Support Rod	1
8	Ratchet Claw	2	21	Washer C	1	34	Gear	1
9	Retaining Ring for Axle12	2	22	Retaining Ring for Axle22	1	35	Clip A	1
10	Bolt M6 x116	2	23	Rocher Arm	1	36	Friction Flake	2
11	Shaft	1	24	Washer 10	1	37	Ratchet	1
12	Retaining Ring for Axle20	1	25	Nut M10	1	38	Clip B	1
13	Washer B	1	26	Nut M16	1	39	Bolt M6×20	1

HAND WINCHE

MODEL: QI-2
N.W.: 4.2KG

