



Plus



Nocal

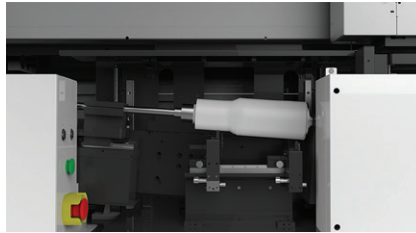
NC-Cylinder ELF-G6

High Speed Cylinder UV Inkjet Printer



RICOH
imagine. change.





The ultimate pursuit of intimate experience



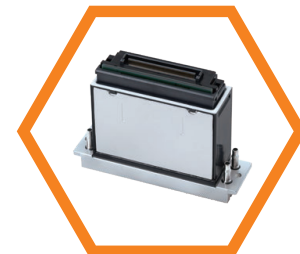
Stable ink supply and intelligent temperature control

Printhead Arrangement

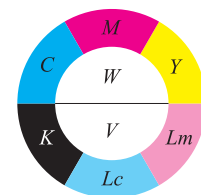


Specification

Printhead	Ricoh Gen6 MH5340 (4 Channel) x5pcs
Droplet Volume	5-15pl (Variable drop)
Spraying Range	2 - 15mm (Printhead to Print Surface)
Resolution	Max 1800dpi
Color	CMYKLcLm+White+Vanish
Ink	UV Curable
Printing Length	80 ~ 280mm
Printing Diameter	Ø 45 ~ 160mm
Taper Printing Range	<5°
RIP Software	RiPrint
Interface	Ethernet
Curing System	LED UV System (Water Cooling)
Operation System	Windows 10 / 11
Voltage	AC 220~240, 50/60HZ
Power	1500W
Temperature	20C ~ 28C
Humidity	35% ~ 65%
Dimension	1994mm(L) x913mm(W) x 1535mm(H)
Weight	420KG



Ricoh Gen 6



 +6012 2899 460 ~ www.kplus.com.my

K Plus Machine Tech Sdn Bhd 201601023763 (1194702-P)
 No. 14, Jalan 6/118 B, Desa Tun Razak, 56000 Kuala Lumpur, Malaysia.
 Tel. +603 9174 5969 ~ sales@kplus.com.my

NOCN
 Digital printer
 Authorised Distributor