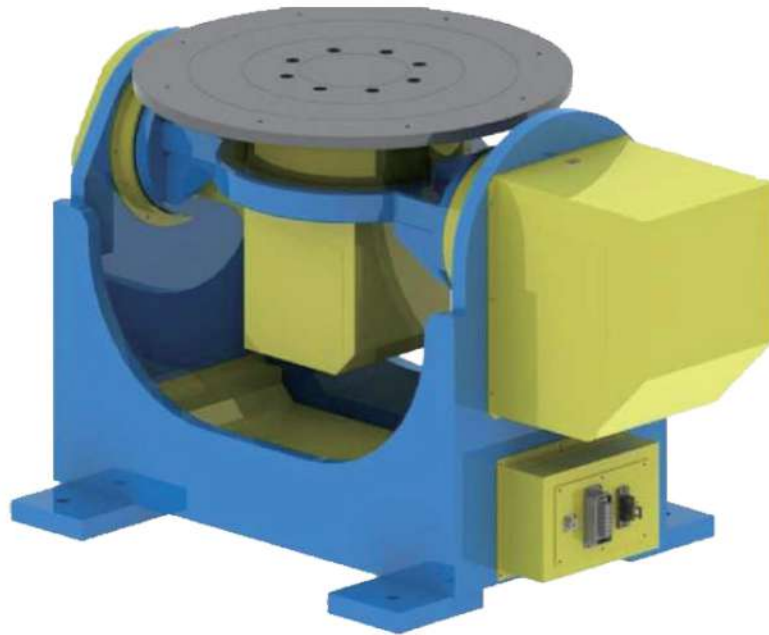


2-axis positioner

(The picture is for reference only; the final product shall prevail in kind.)



Technical Specification

Specifications not listed can be customized according to requirements

Items	Parameter	Parameter	Parameter
Loading capacity	200KG Within axis 2 radius (R300mm)	500KG Within axis 2 radius (R300mm)	1000KG Within axis 2 radius (R500mm)
Standard Rotate Radius	R400mm	R400mm	R600mm
Rated Rotate range (J1)	±90°	±90°	±90°
Rated Rotate range (J2)	±360°	±360°	±360°
Rated Rotate speed (J1)	70°/S	50°/S	15°/S
Rated Rotate speed (J2)	70°/S	70°/S	24°/S
Repeat Location accuracy	±0.10mm	±0.12mm	±0.20mm
Machine overall size	1000×550×600mm	1200×600×750mm	1500×750×900mm
Rotating table	Φ500mm	Φ500mm	Φ800mm
Rotating center height	500mm	550mm	750mm
Power supply	200V ±10% 50Hz 3-P	200V ±10% 50Hz 3-P	200V ±10% 50Hz 3-P
Insulation class	H	H	H
G.W	about 300kg	about 500kg	about 1000kg