

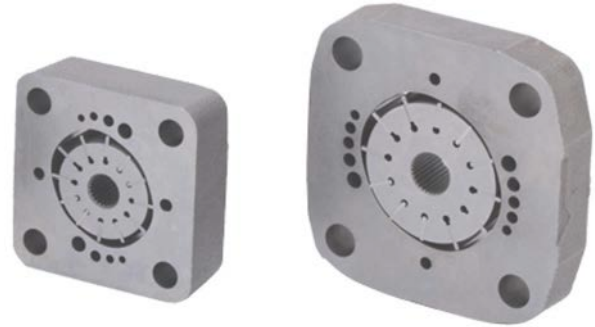
Cartridge Kit for Vane Pump HV10 and HV20 Series

Features and Handling

- Replacement for single and double HV10, HV10F, HV10P, HV20, HV20F, HV20P, HV2010, HV2010F, HV2010P, HV2020, HV2020F, HV2020P, HV210, HV230

It is the cartridge consists of a cam ring, a rotor, and 12 vanes

- To change rotation, flip the cam ring so that the arrow point to the other direction. No need to do anything with the vanes.



Specifications : HV10

Model	Ring Size Delivery at 1200 r/min & 7 bar (100 psi)	Geometric Displacement cm ³ /r (in ³ /r)	Delivery at 1500 r/min & 7 bar (100 psi) L/min (USgpm)	Maximum Pressure bar (psi)	Maximum Speed rpm	Minimum Speed rpm	Weight kg (lb)
	USgpm						
HV 10	1	3.3 (0.20)	4.70 (1.25)	172 (2500)	4800	650	0.6 (1.3)
	2	6.6 (0.40)	9.40 (2.50)		4500		
	3	9.8 (0.60)	14.20 (3.75)		4000		
	4	13.1 (0.80)	18.90 (5.00)		3400		
	5	16.4 (1.00)	23.60 (6.25)	3200	1.0 (2.2)		
	6	19.5 (1.19)	28.40 (7.50)	152 (2200)			3000
	7	22.8 (1.39)	33.10 (8.75)	138 (2000)			2800

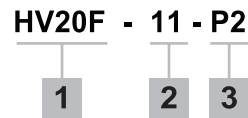
Cartridge Kit for Vane Pump HV10 and HV20 Series

HV20

Model	Ring Size Delivery at 1200 r/min & 7 bar (100 psi)	Geometric Displacement	Delivery at 1500 r/min & 7 bar (100 psi)	Maximum Pressure	Maximum Speed	Minimum Speed	Weight
	USgpm	cm ³ /r (in ³ /r)	L/min (USgpm)	bar (psi)	rpm	rpm	kg (lb)
HV 20	5	16.4 (1.00)	23.60 (6.25)	172 (2500)	3400	650	1.2 (2.6)
	6	19.5 (1.19)	28.39 (7.50)		3400		1.1 (2.4)
	7	22.8 (1.39)	33.11 (8.75)		3000		1.6 (3.5)
	8	26.5 (1.62)	37.85 (10.00)		2800		
	9	29.7 (1.81)	42.57 (11.25)		2800		
	10	34.1 (2.08)	47.30 (12.51)		2500		2.1 (4.6)
	11	36.4 (2.22)	52.04 (13.75)	2500	2.3 (5.0)		
	12	39.0 (2.38)	56.77 (15.00)	2400			
	13	42.4 (2.59)	61.50 (16.25)	152 (2200) 2400			

Cartridge Kit for Vane Pump HV10 and HV20 Series

Ordering Code



1. Model :

HV10, HV10F, HV10P,
 HV20, HV20F, HV20P,
 HV2010, HV2010F, HV2010P,
 HV2020, HV2020F, HV2020P,
 HV210, HV230

2. Delivery (USgpm at 1200rpm & 7 bar)

HV10, HV10F, HV10P, -1,2,3,4,5,6,7
 HV2010, HV2010F,
 HV2010P,

HV20, HV20F, HV20P, -5,6,7,8,9,10,11,12,13
 HV2010, HV2010F, HV2010P,
 HV2020, HV2020F, HV2020P

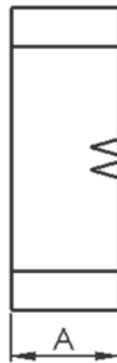
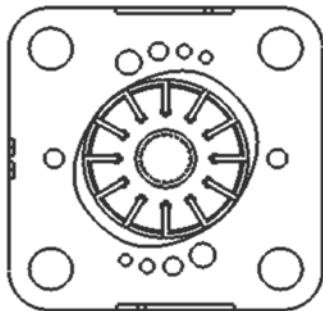
3. Cartridge Position

P1 - For single pump or shaft end in double
 pump
 P2 - For cover end in double pump

Cartridge Kit for Vane Pump HV10 and HV20 Series

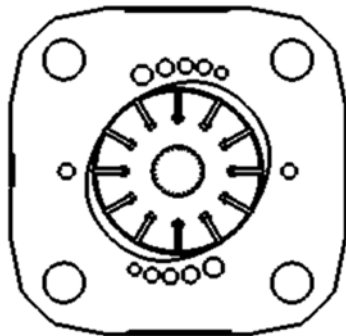
Installation Dimension mm (inch)

Cartridge Kit HV10



Delivery	A
1,2,3	15.6(0.61)
4,5	21.9(0.86)
6,7	26.9(1.06)

Cartridge Kit HV20



Delivery	A
5,6	15.5(0.61)
7,8,9	21.9(0.86)
10,11	26.9(1.06)
12,13	30.4(1.19)