



COO[®]
INDUCTION COOKER



INDUCTION COOKER

CK-280 • CK-350

BARS - RESTAURANTS - HOUSEHOLD

CK-280



SPECIFICATION

- Ceramic Glass Hob.
- Stainless Steel Housing.
- Touch Control LED Display Panel.
- 24 Hours Timing Control.
- Overheating Protection.
- 1-10 Power Levels: **500-2800W**.
- 1-10 Temperature Setting: **60-240C**.
- Voltage & Power: **220-240V, 50/60Hz, 2800W**.
- Size: **Approx. 3 x 39.3 x 11.9cm**.

CK-350



SPECIFICATION

- Ceramic Glass Hob.
- Stainless Steel Housing.
- Touch Control LED Display Panel.
- 24 Hours Timing Control.
- Overheating Protection.
- 1-10 Power Levels: **500-3500W**.
- 1-10 Temperature Setting: **60-240C**.
- Voltage & Power: **220-240V, 50/60Hz, 3500W**.
- Size: **Approx. 36 x 45 x 12.9cm**.

CLICK HERE



SAFETY

NO FLAME AND NO EXHAUST GASES

- You can be worry free about accidental burning or a hot cooking environment.

COOKTOP STAYS COOL

- Only the cookware itself will get heated, while the cooktop stays cool and safe



CLEANING

EASY TO CLEAN

- Effective temperature control and no flame.
 - Cookware is less likely to get burned.
- Cool and smooth surface of the cooktop makes it safe and effortless to clean whatever mess is left behind.



SPEED

COOK FASTER

- Induction creates instant heat within the metal of a cookware, no heat is wasted in the process, hence food will be cooked faster compared to gas cooktop.

TOUCH CONTROL

- Precise temperature control, timer, on/off
 - all at the touch of a button.



DURABLE

MADE OF STEEL

- Robust and long-lasting.

GOOD VENTILATION

- Built-in fan for efficient heat dissipation.



CLEANING

EASY TO CLEAN

- Effective temperature control and no flame.
 - Cookware is less likely to get burned.
- Cool and smooth surface of the cooktop makes it safe and effortless to clean whatever mess is left behind.



COST SAVING

REDUCE OVERHEADS

- Low energy consumption which helps you save on your electricity bill.
- No flame and no gas which result in less costly investment in exhaust air units and gas pipes!



Website

[click here](#)

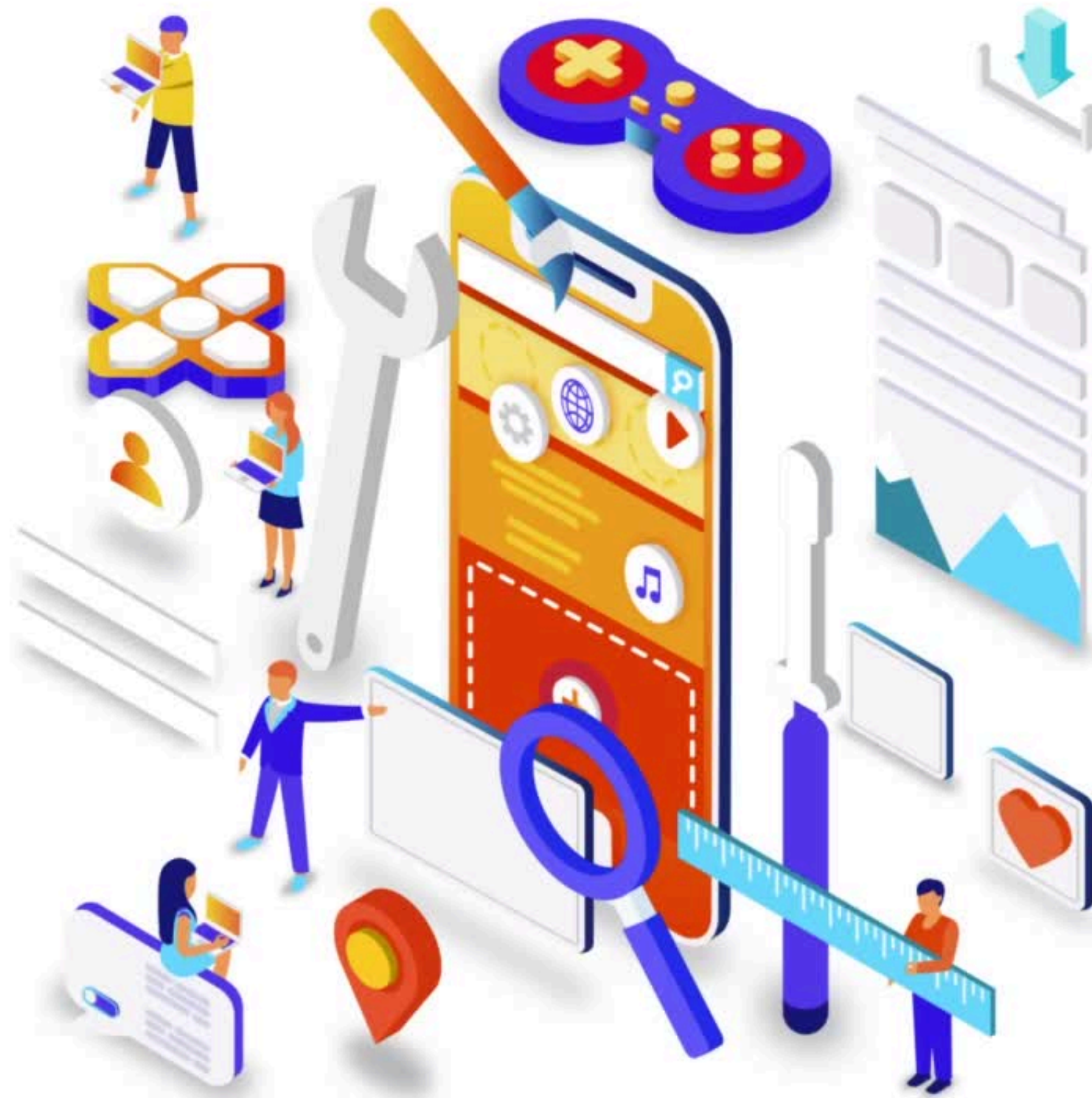


Connect with us

on Youtube.

Click below

[HORECA HUB OFFICIAL](#)



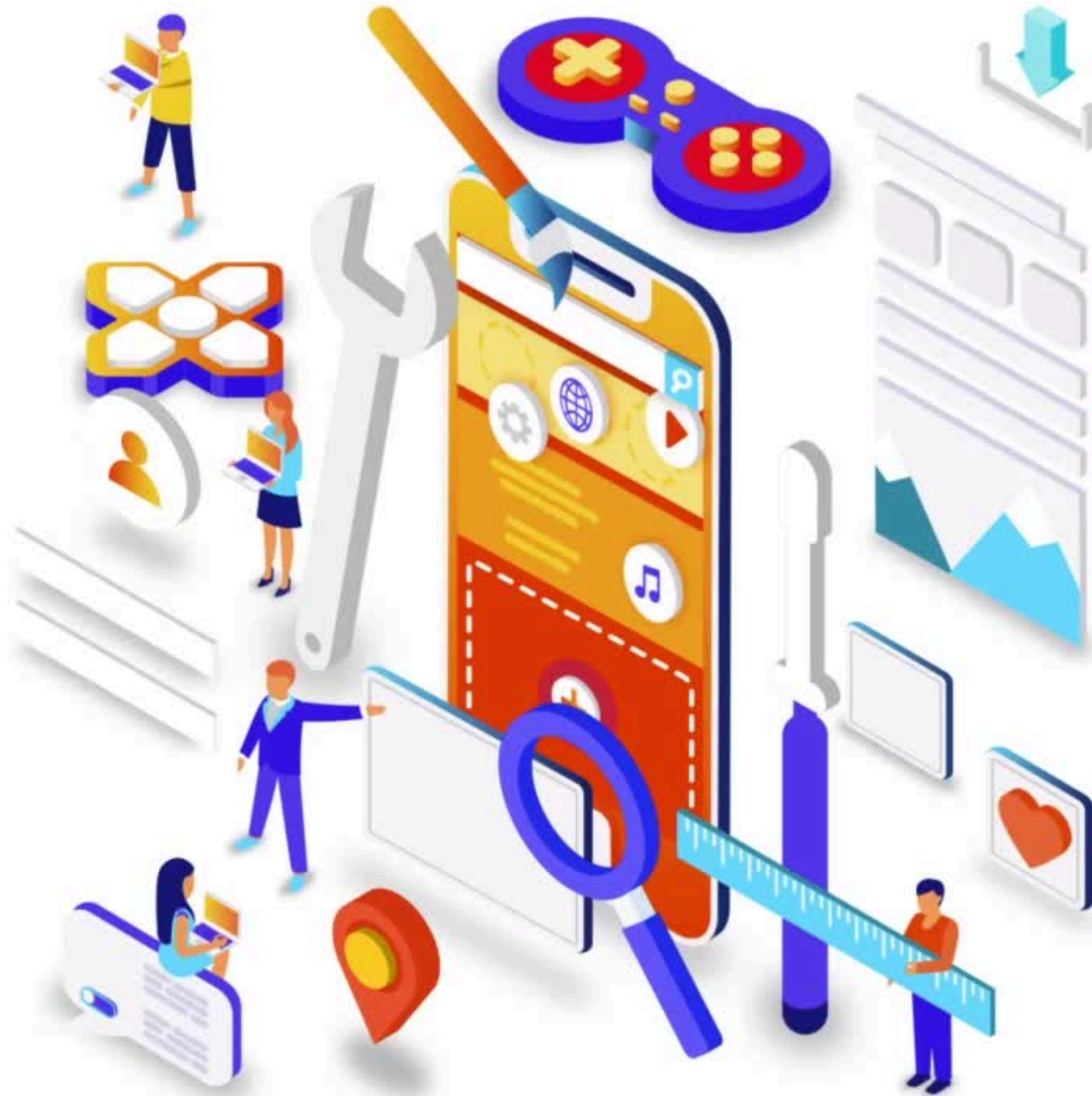
Connect with us

on Facebook.

Click below

[HORECA HUB INDUSTRI JAYA](#)

[HORECA HUB TAMAN SENTOSA](#)

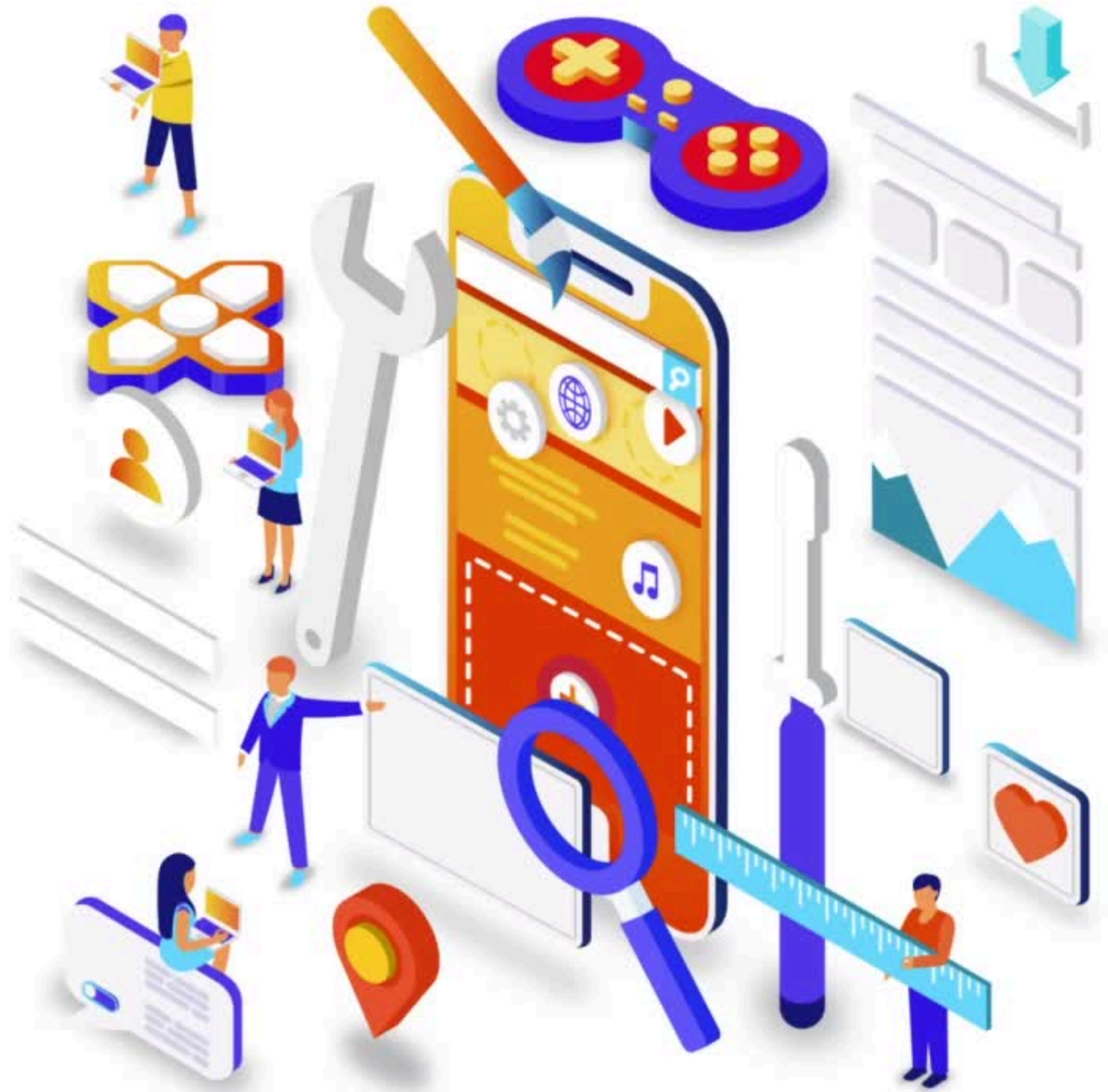


Connect with us
on Instagram.

Click below

[HORECA HUB INDUSTRI JAYA](#)

[HORECA HUB TAMAN SENTOSA](#)



Owned by

