

winterhalter®



WINTERHALTER UNDERCOUNTER DISHWASHER

U-50

ITEM CODE : 172487

RESTAURANTS - HOTELS - CAFE - CATERING - HOUSEHOLD

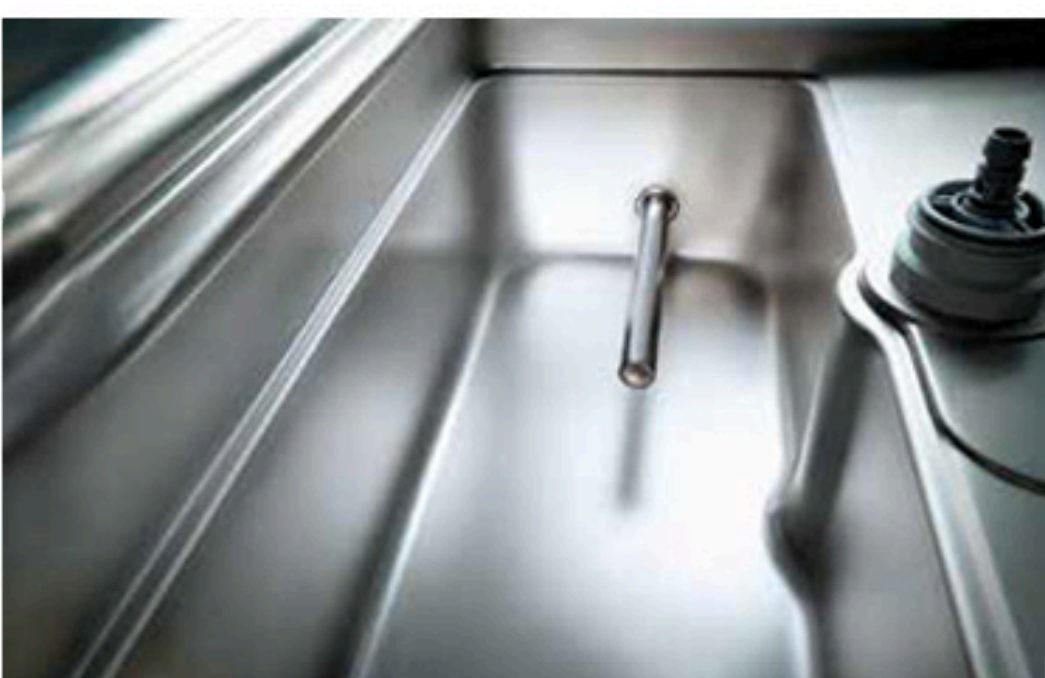
U50 - UNDERCOUNTER DISHWASHER

The U 50 has a robust construction and offers simple and self-explanatory operation with its single-button control. Thanks to its spacious interior, big dishes can be washed in the U 50. The upper and lower washing system remove stubborn contaminations – within 2 or 3 minutes. The twofold wash water filtration system guarantees an effective washing process with gleaming washing results. The included strainer filters coarse dirt out of the wash water and the detergent solution remains constantly clean.

- This guarantees an optimal and efficient usage of energy, water, detergent and rinse aid.
- The double skinned door saves energy and minimises the noise emission to a pleasant noise level.

BEST FEATURES

- **WASHING PROGRAMMES** - The U50 makes washing as easy as possible: with only three programmes. A standard programme for normal soiling, a HighTemp programme that meets Thermolable specifications and a 1-minute-programme.
- **SIMPLE TO USE** - Start button for 1-button operation. Automatic self-cleaning programmed. Temperature display. Operation of the U50 is easy and intuitive.
- **WASH FIELD** - Two elliptical wash fields at the top and bottom deliver optimal wash results. The special shape of the wash fields and the geometry of the jets guarantee washing power over the entire surfaces with minimal rinse water consumption.



- **CLEANLINESS AND HYGIENE** - Sparkling clean. Hygienically clean. The U50 guarantees first-class wash results. For cleanliness and hygiene of the highest standard.
- **ECONOMICAL AND EFFICIENT** - Double-skinned design. Effective filtration. Smaller tank volume for fast start. The U50 is designed for extremely cost-effective operation.

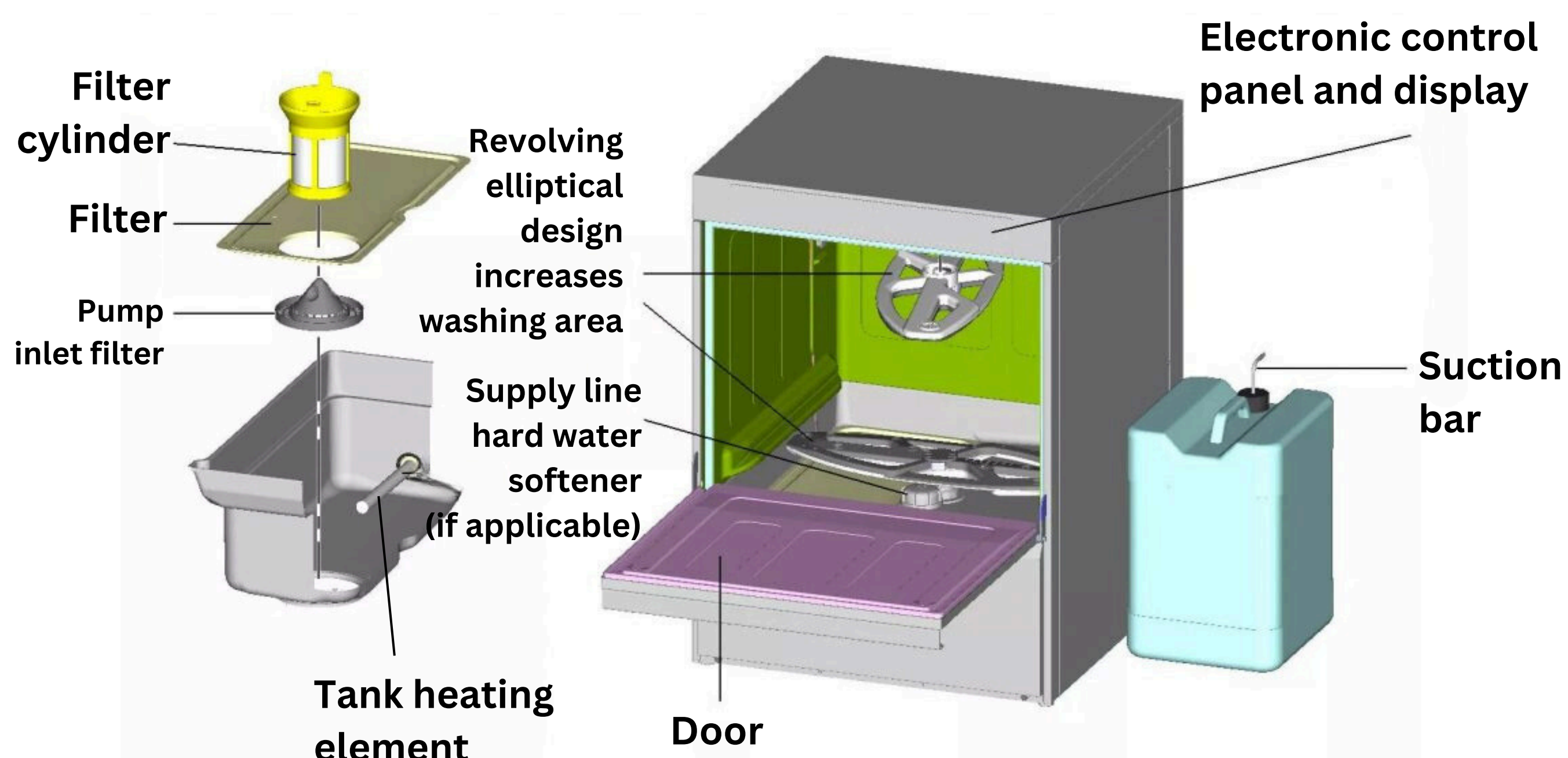
DESCRIPTION OF PRODUCT

| | | | |
|-----------------------------|-----------------|--------|--------|
| BRAND NAME | WINTERHALTER | | |
| PRODUCT ORIGIN | THAILAND | | |
| MODEL | U50 | | |
| CAPACITY | 30/20 (RACKS/H) | | |
| POWER & VOLTAGE REQUIREMENT | 400V/3PH/50HZ | | |
| RACK DIMENSION | 50 x 50 cm | | |
| CAPACITY TANK | 15.3 LITERS | | |
| WEIGHT | 74 KG | | |
| PRODUCT SIZE | WIDTH | DEPTH | HEIGHT |
| | 600 mm | 603 mm | 855 mm |

DIMENSION OF PRODUCT

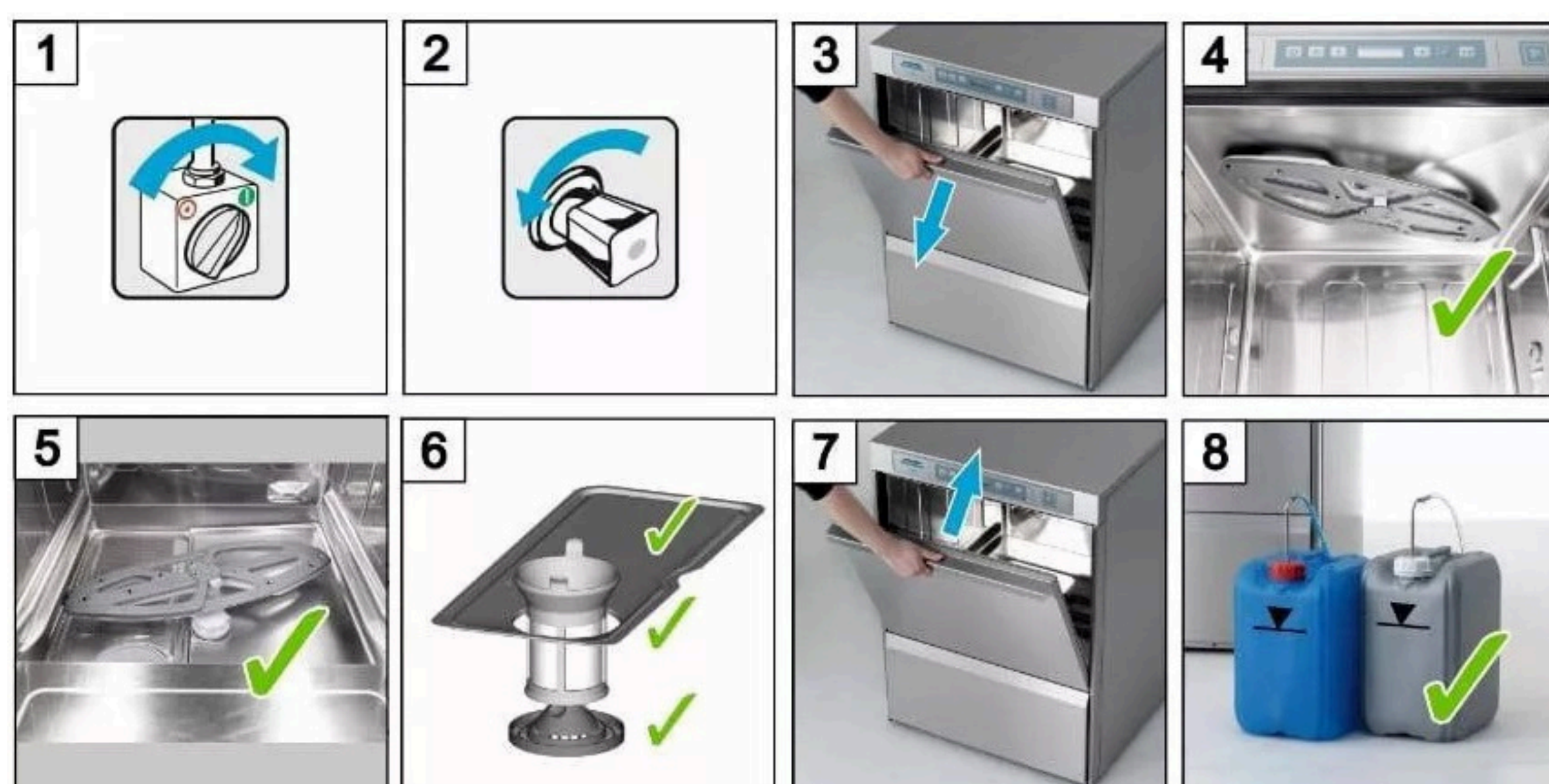


PRODUCT DETAILS

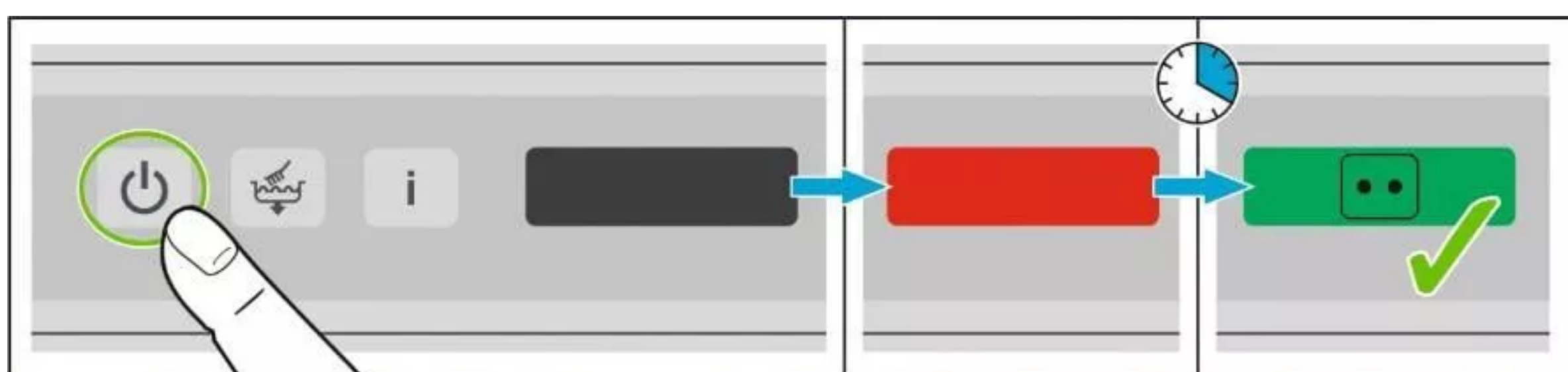


INSTRUCTIONS FOR USE OF WINTERHALTER U50 DISHWASHER

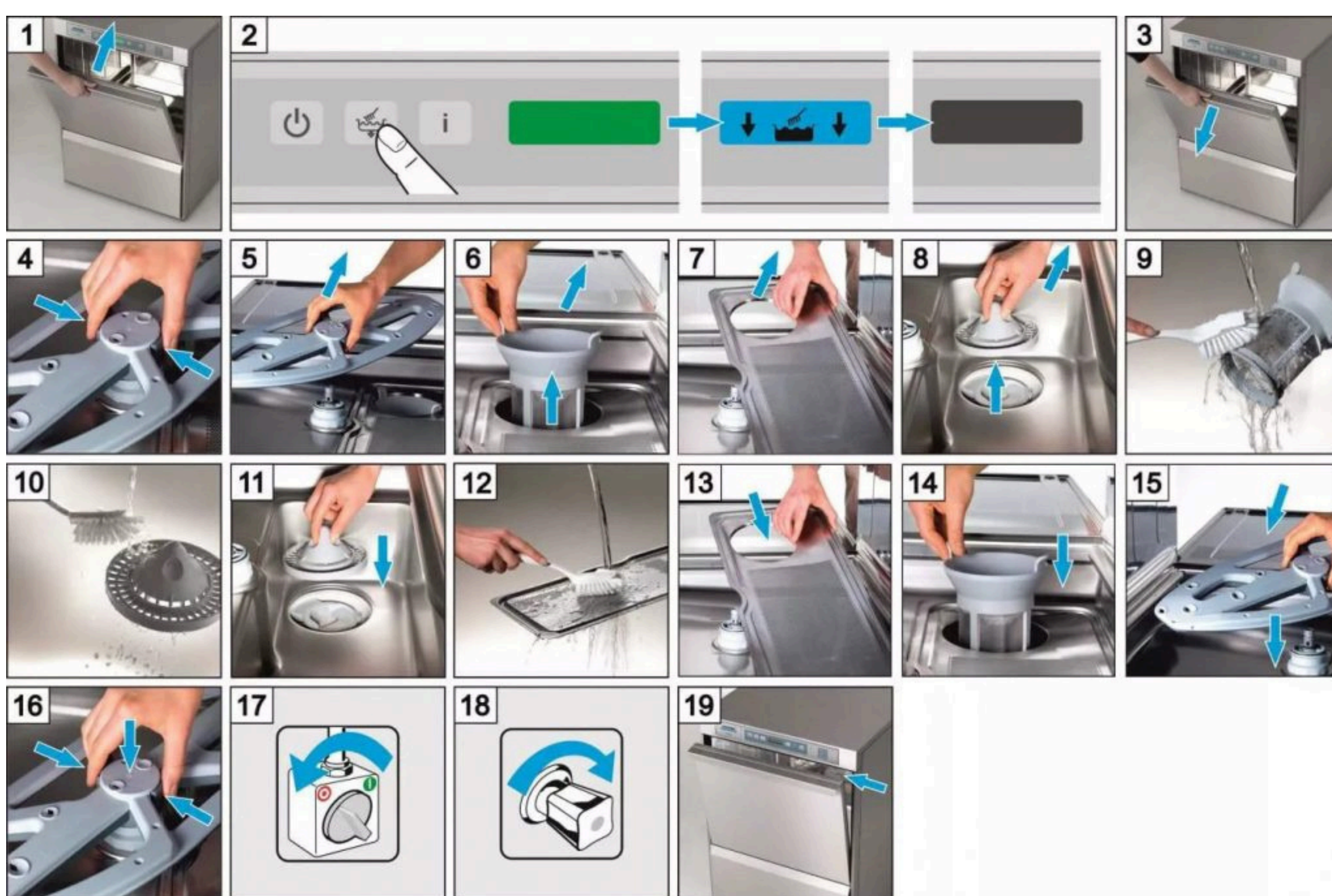
I. PREPARE THE MACHINE BEFORE STARTING IT



II. START THE MACHINE



III. PREPARE TO WASH DISHES



Start the washing program

- Slide the washing rack into the machine.

Note: Do not put too many dishes to ensure the machine operates well

- Close the door.
- Select program.
- The selected program is displayed on the screen.
- Press the start button.

The washing program can be ended in the following ways:

- Press the power button
- Press the button of the selected washing program

Washing process

- Do not turn off the machine when stopping washing. Close the door to prevent cooling.

Shutting down the machine

- Turn off the machine at the end of the workday using the self-cleaning program (as shown) to allow the machine to be cleaned and emptied. If you use the On/Off button, the tank will remain full but will no longer be kept at temperature. If the tank temperature has dropped too much before the machine is turned back on, the tank will be automatically emptied and refilled.

Website

[click here](#)



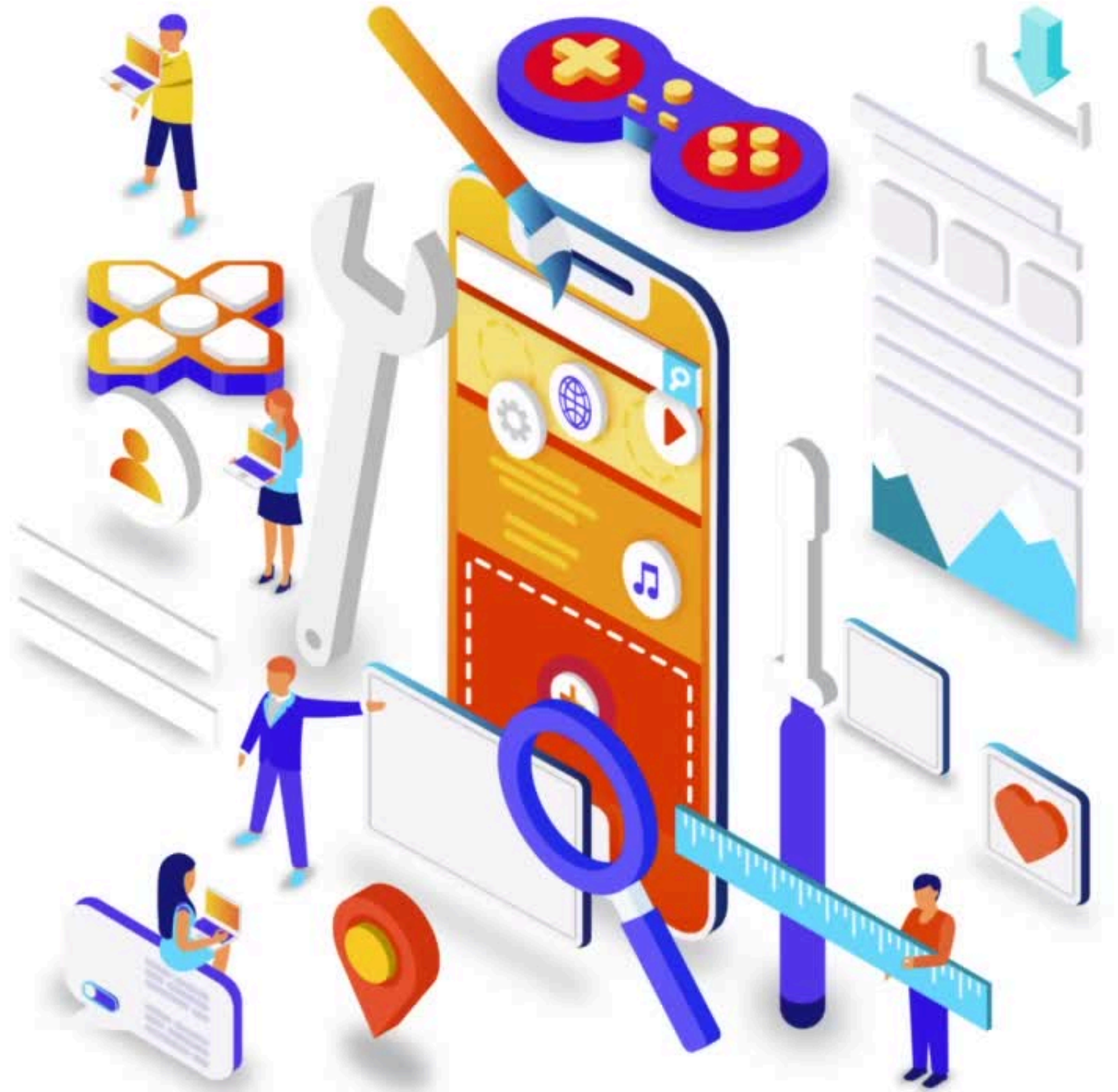
Connect with us

on Facebook.

Click below

[HORECA HUB INDUSTRI JAYA](#)

[HORECA HUB TAMAN SENTOSA](#)



Owned by

