



# **SINGLE ELECTRIC S/S MILK SHAKE MACHINE**

**ITEM CODE : 112201**

**CAFE - BEVERAGE STORE - HOTELS**

# 18000RPM

## Stainless steel single head milkshake machine



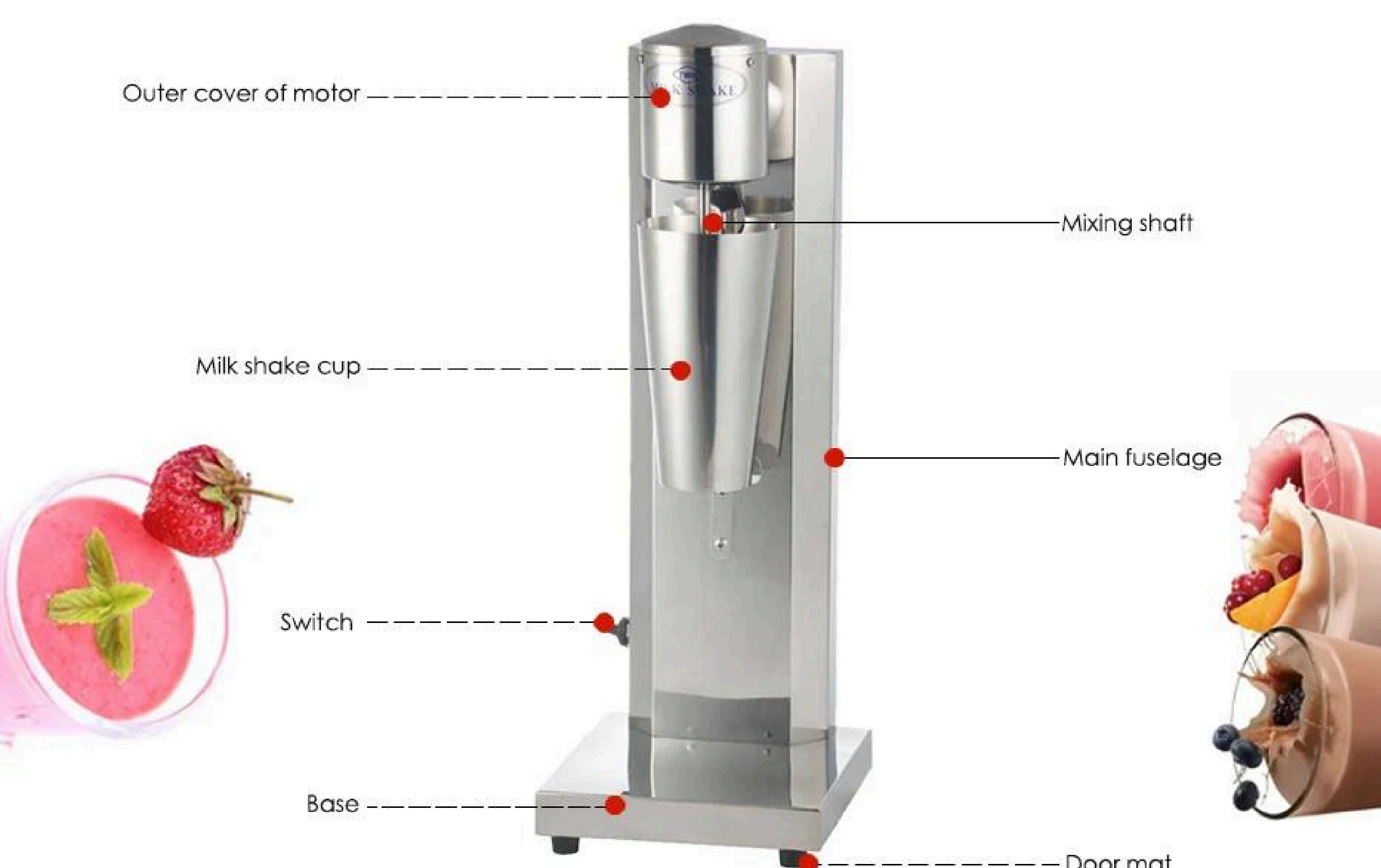
### DESCRIPTION OF PRODUCT

VOLTAGE	220V/110V		
PRODUCTION CAPACITY	30 CUPS/H		
RATED FREQUENCY	50 Hz		
RATED OUTPUT POWER	150W		
CAPACITY	LESS THAN 10 LITERS		
SPEED	1800RPM		
DIMENSION	WIDTH	LENGHT	HEIGHT
	160 MM	190 MM	530 MM

### DIMENSION OF PRODUCT



## COMPONENT ANALYSIS



## MIXING SHAFT

Food grade stainless steel, durable, scratch-free, rust-free, suitable for high-strength stirring requirements



## THE MICRO SWITCH

Built-in micro-switch, button the cup and touch the micro-switch to stir.



## STAINLESS STEEL FUSELAGE

Easy to clean and durable appearance, concise atmosphere



## MORE DETAILS



## ANGLE DISPLAY



# Website

[click here](#)

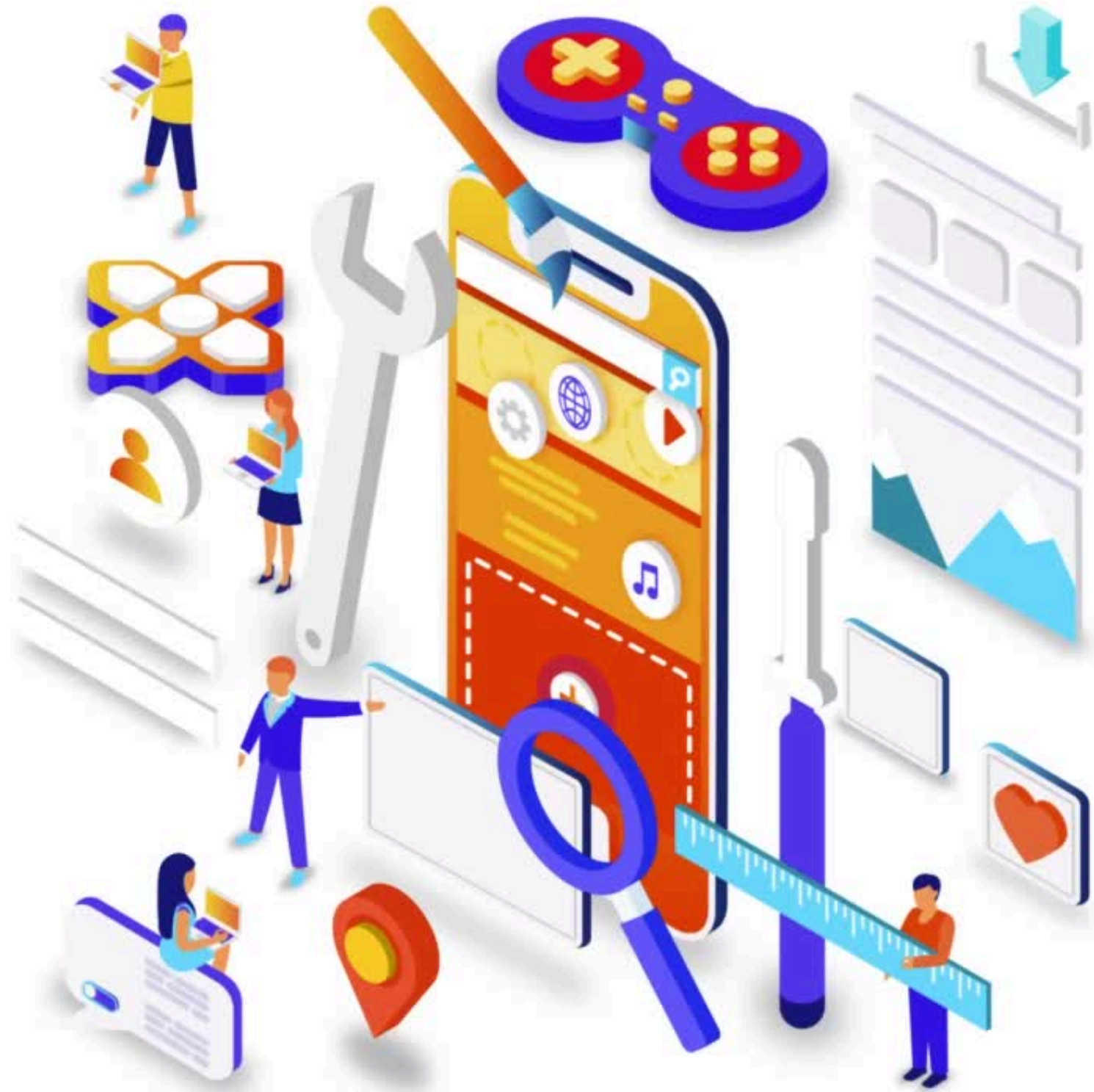


# Connect with us

on Youtube.

Click below

[HORECA HUB OFFICIAL](#)



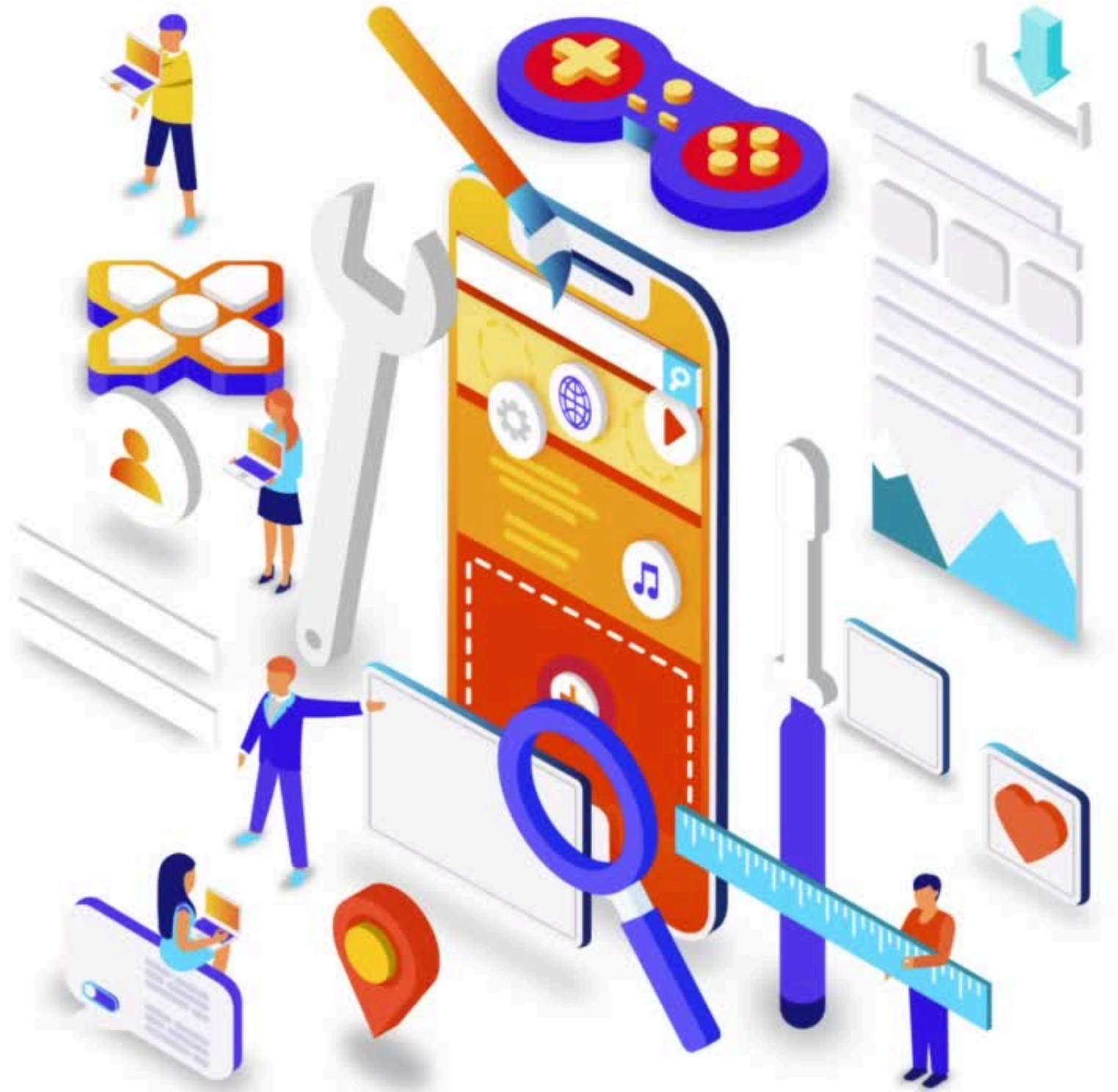
# Connect with us

on Facebook.

Click below

[HORECA HUB INDUSTRI JAYA](#)

[HORECA HUB TAMAN SENTOSA](#)

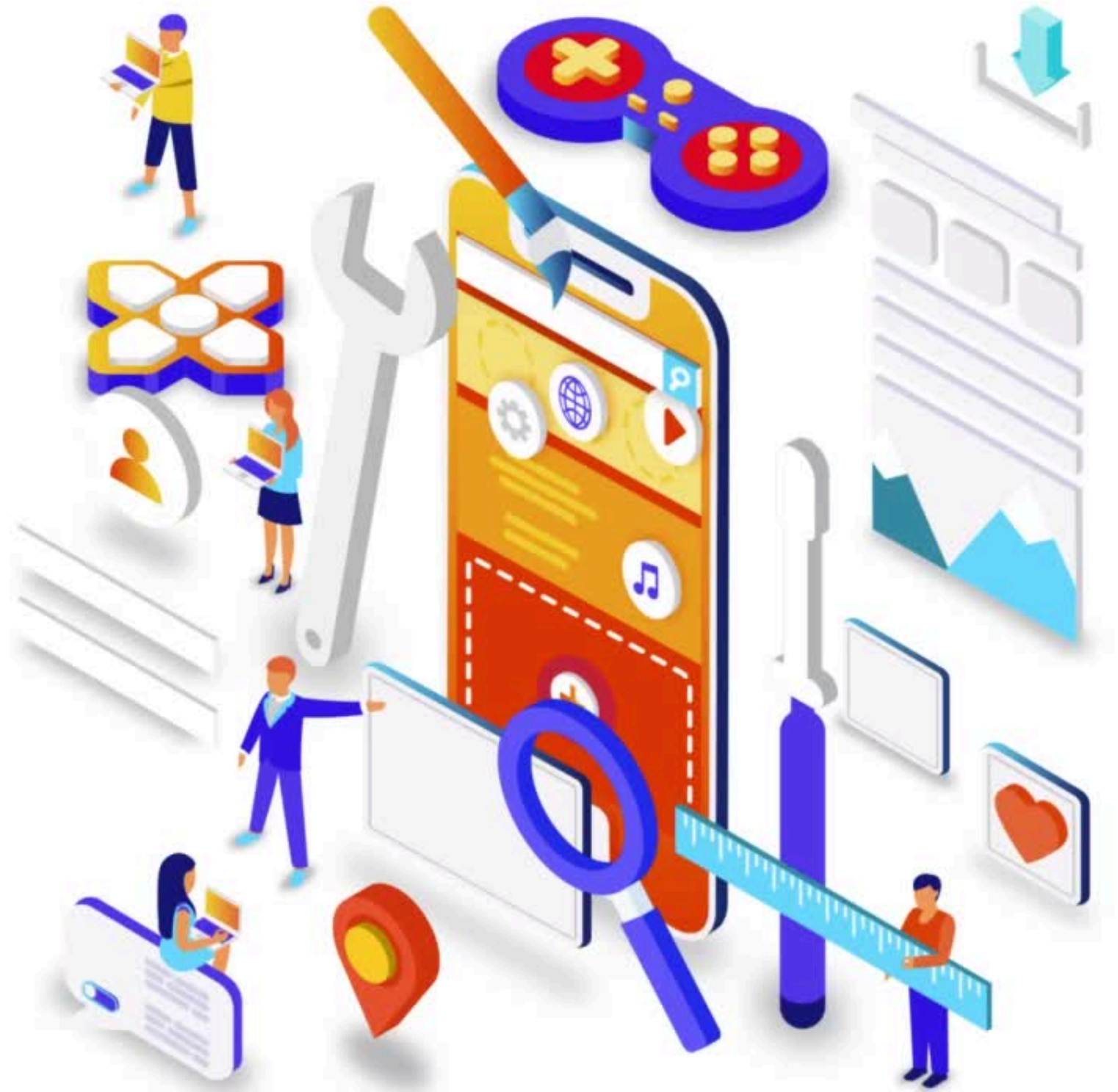


**Connect with us**  
on Instagram.

Click below

[HORECA HUB INDUSTRI JAYA](#)

[HORECA HUB TAMAN SENTOSA](#)



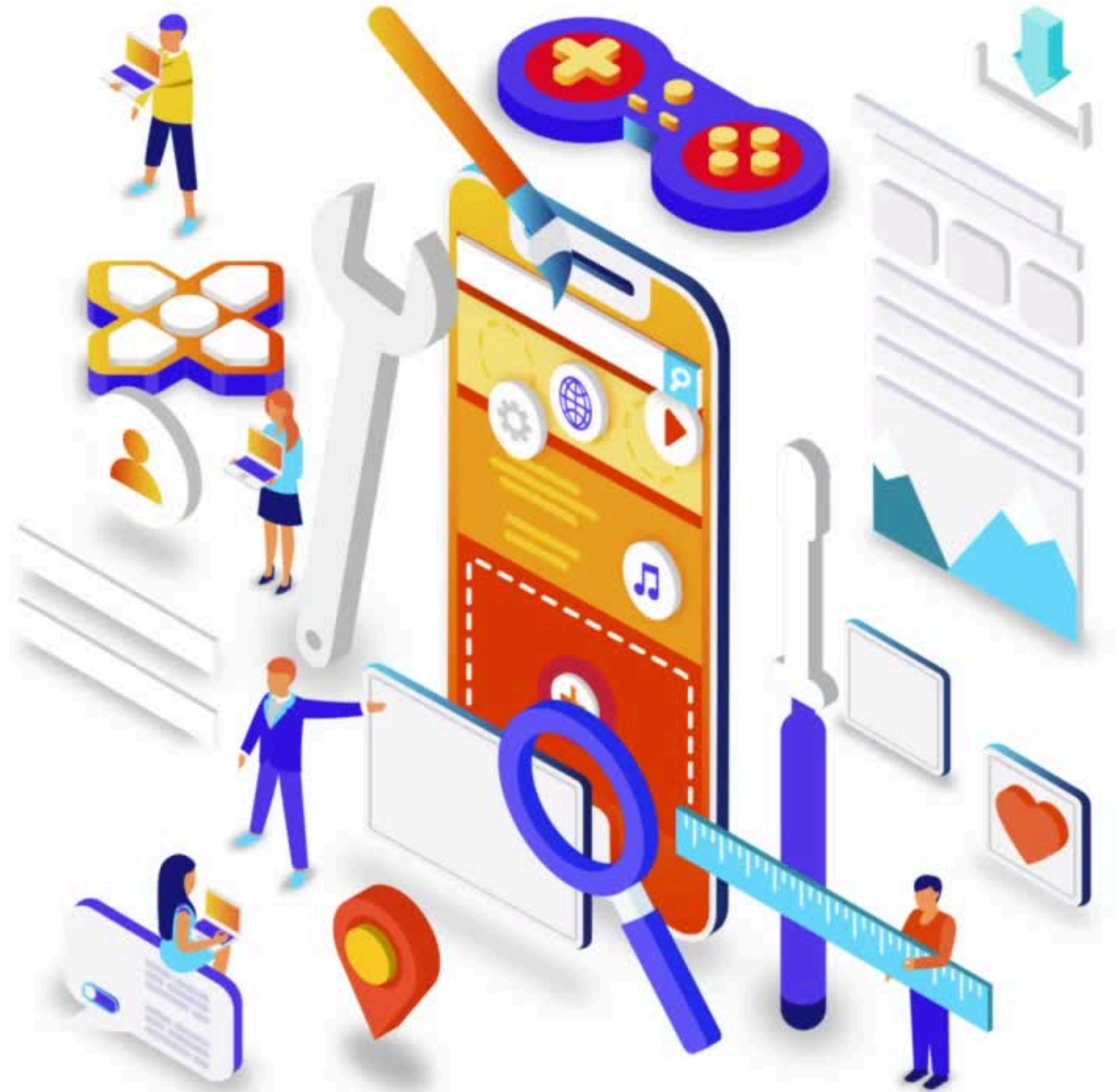


**Connect with us**  
on Tiktok.

Click below

[HORECA HUB INDUSTRI JAYA](#)

[HORECA HUB TAMAN SENTOSA](#)



Owned by

