

ELECTRIC STOVE 6 FISH MOULD

ITEM CODE : 132728

RESTAURANTS - CAFE - HOTELS



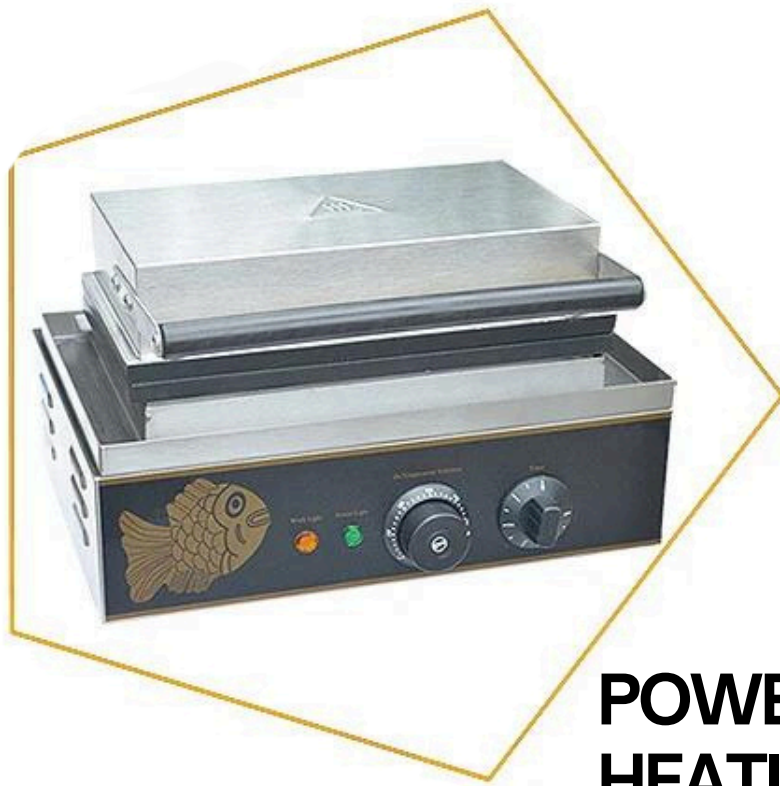
PRODUCT SPECIFICATION

VOLTAGE	220V / 50Hz		
POWER	1550W		
TIMING RANGE	0-5 MINUTES		
TEMPERATURE CONTROL RANGE	50-300 C		
NET WEIGHT	9.5 KG		
DIMENSION OF PRODUCT	WIDTH	LENGHT	HEIGHT
	34 CM	39 CM	24.5 CM
PACKING SIZE	WIDTH	LENGHT	HEIGHT
	43.5 CM	41 CM	30.5 CM

DIMENSION



DETAILS



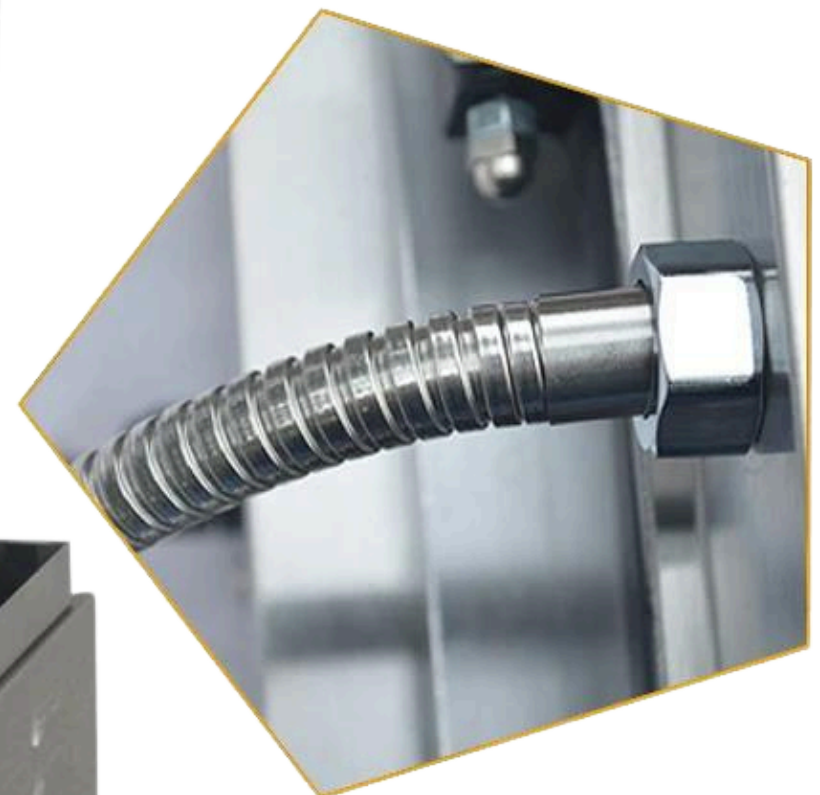
**POWER SUPPLY,
HEATING INDICATOR
LAMP**



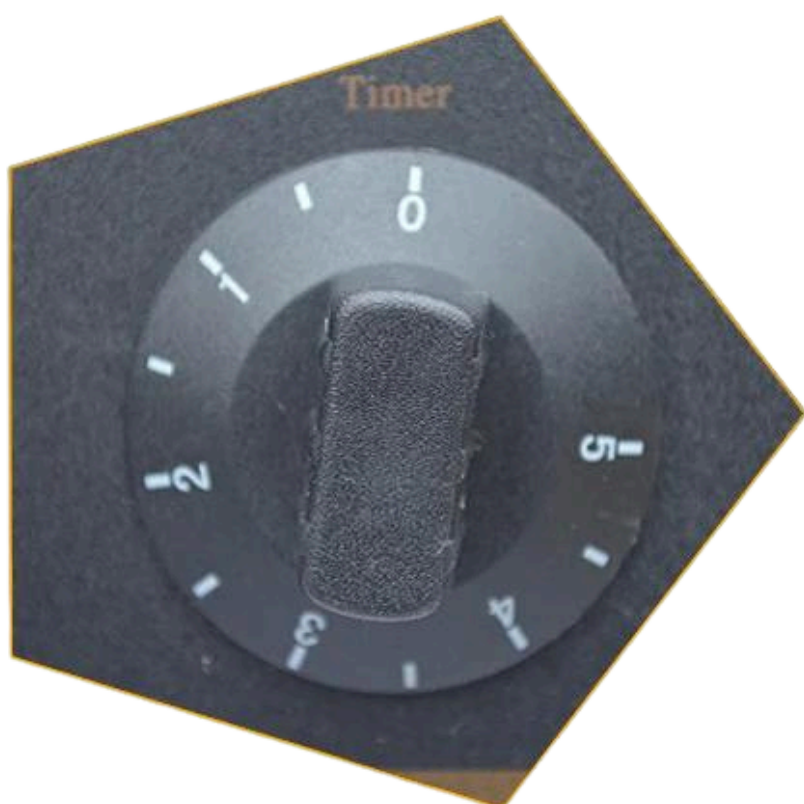
**TEFLON NON-STICK
COATING**



**PRECISION
TEMPERATURE
CONTROL
SWITCH**



**STAINLESS STEEL
JOINT**



**5 MINUTE LONG TERM
TIMING**

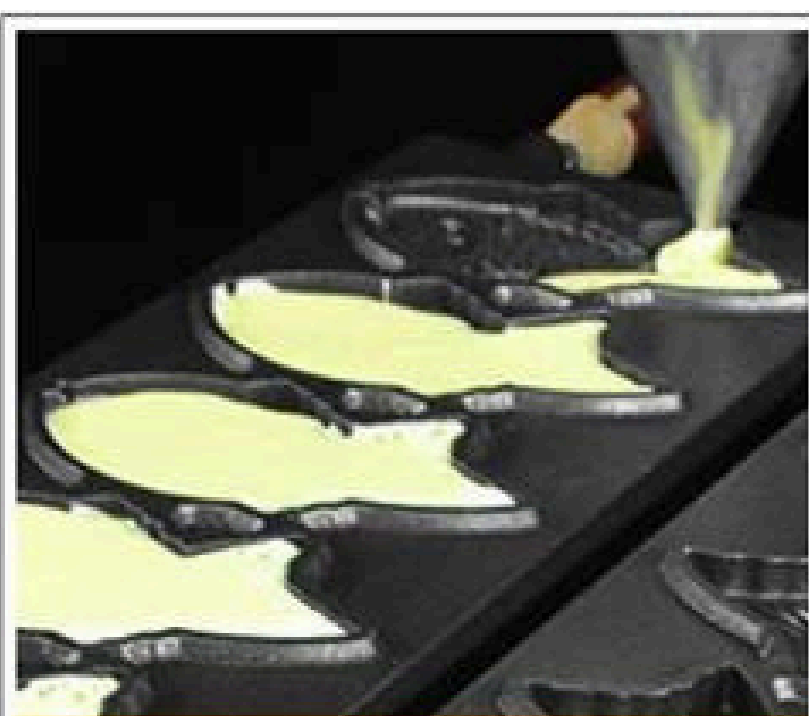


**OIL SPILL TANK ON
FOUR SIDE**

HOW TO USE?



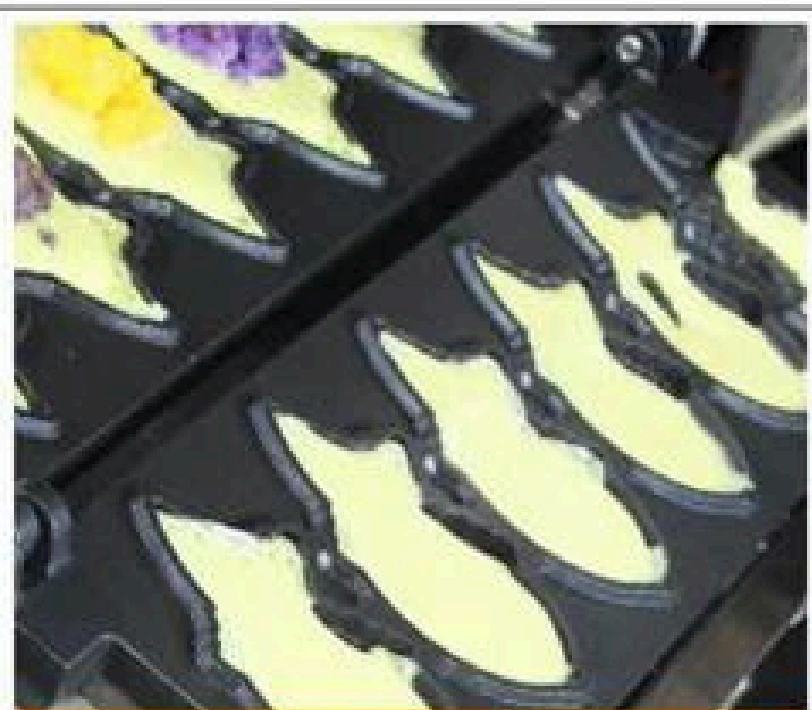
Turn on the machine to warm up



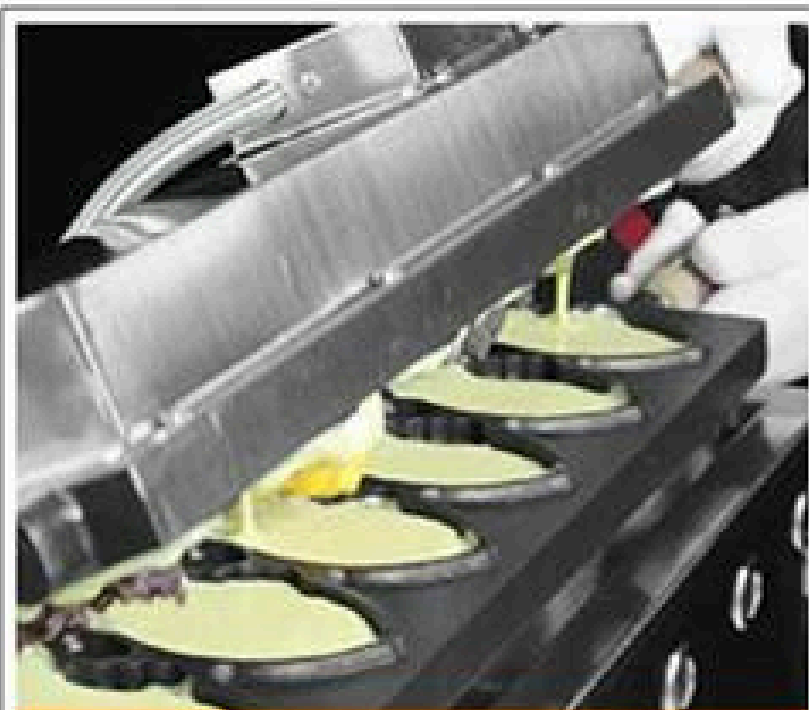
Pour one side of the batter



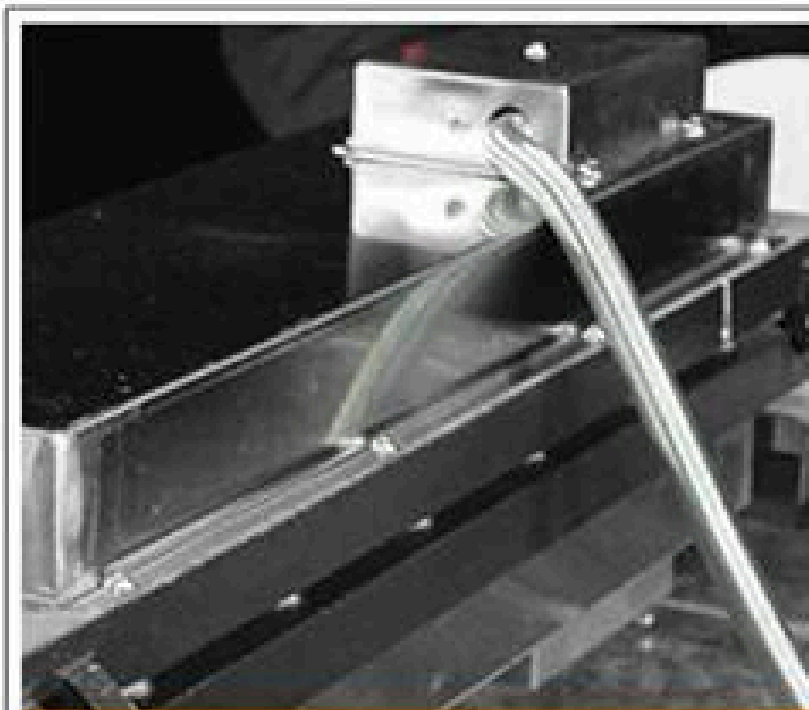
Adding stuffing



Pour the batter on the other side

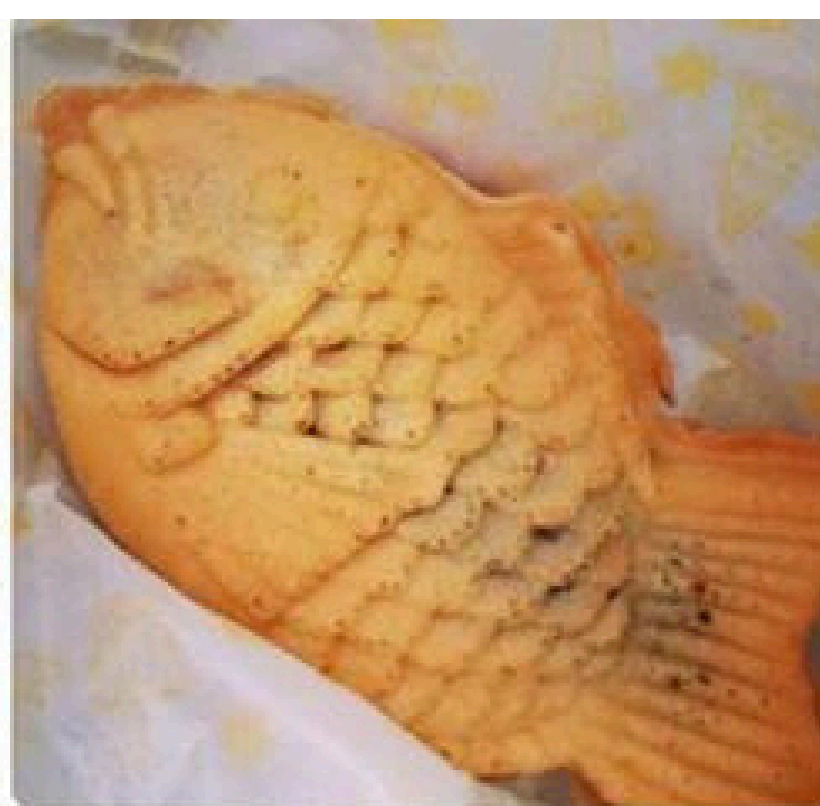


Close the mold



Flip over

APPLICABLE PRODUCTS MAKER



Website

[click here](#)

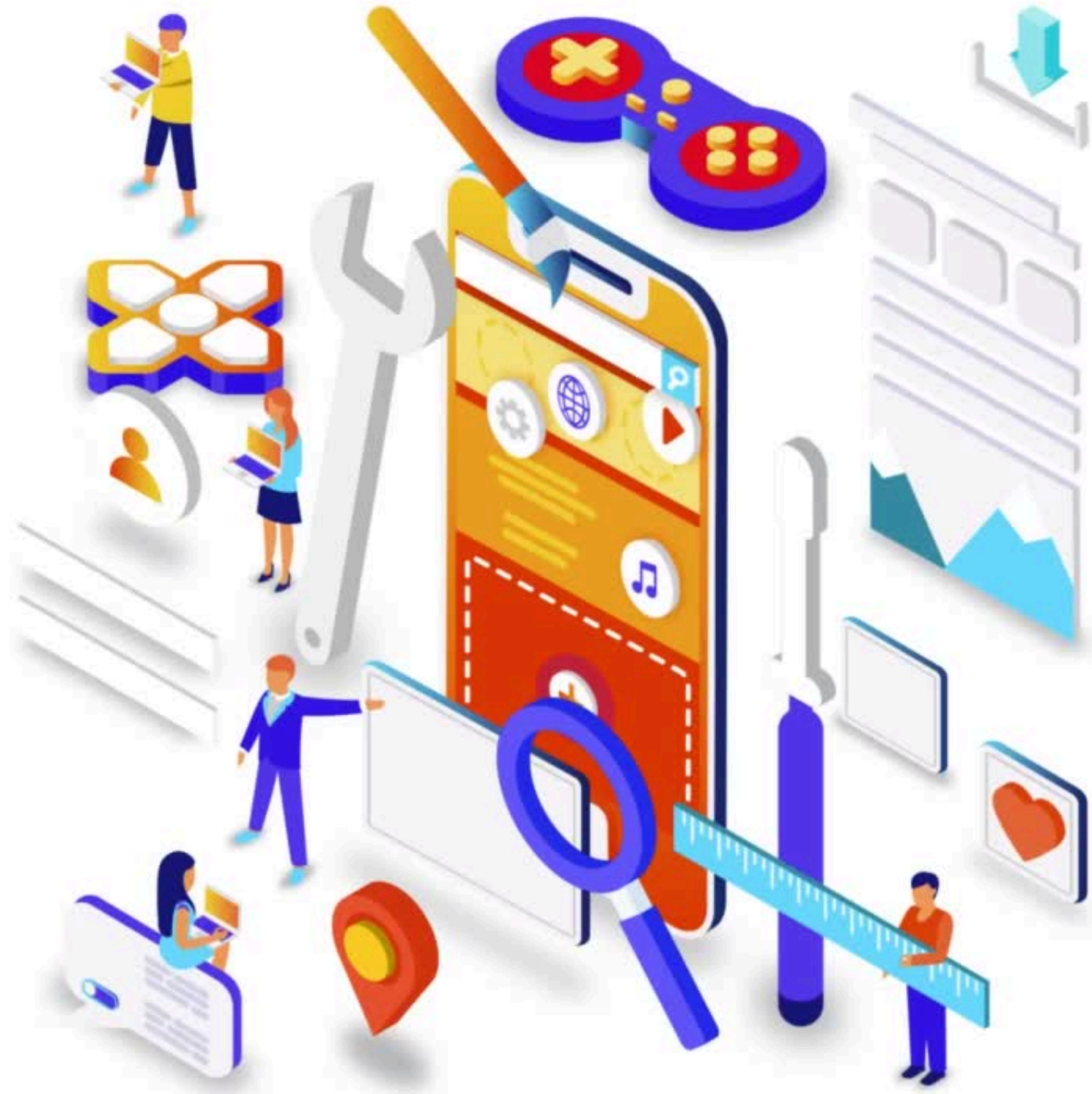


Connect with us

on Youtube.

Click below

[HORECA HUB OFFICIAL](#)



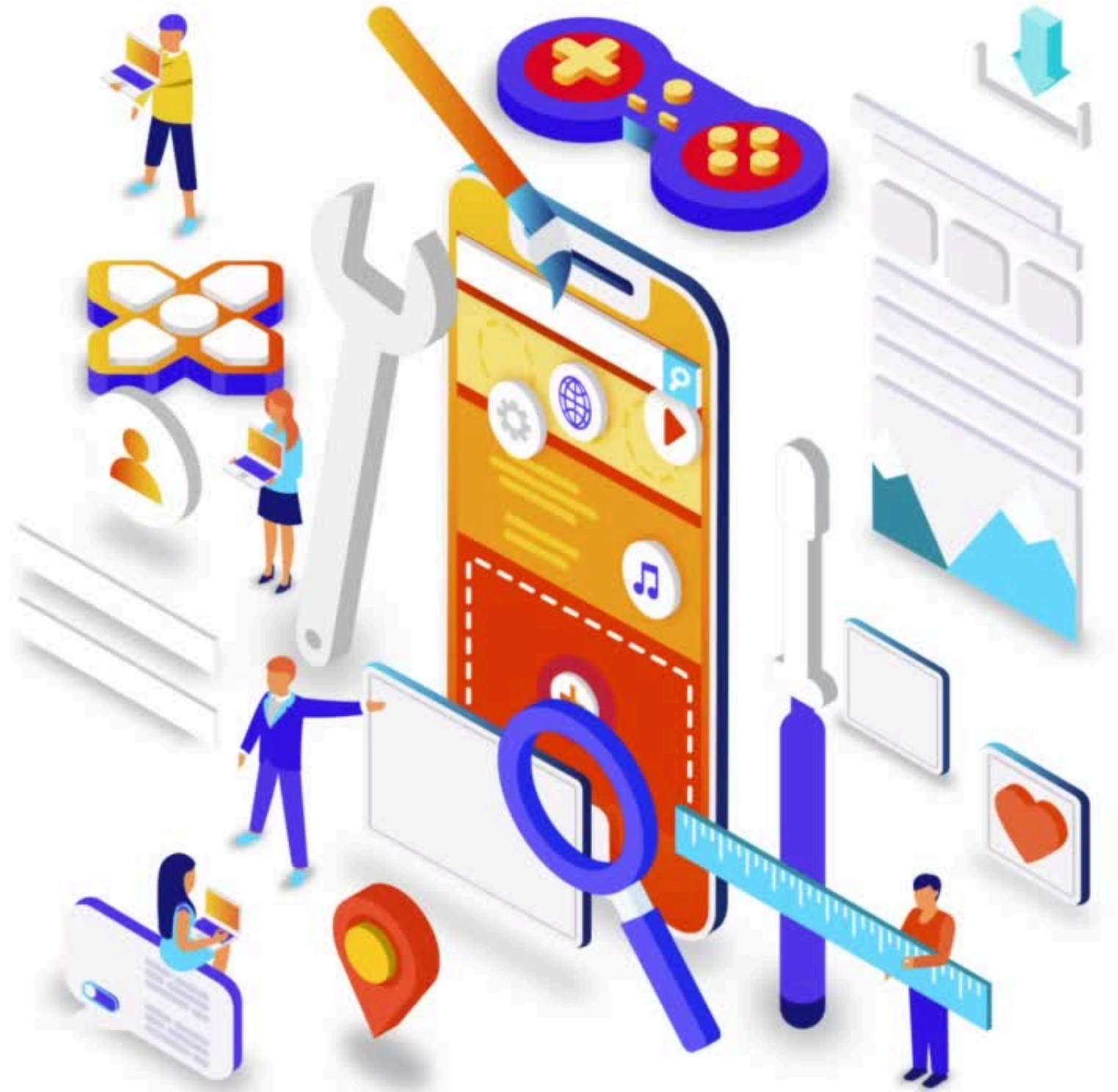
Connect with us

on Facebook.

Click below

[HORECA HUB INDUSTRI JAYA](#)

[HORECA HUB TAMAN SENTOSA](#)

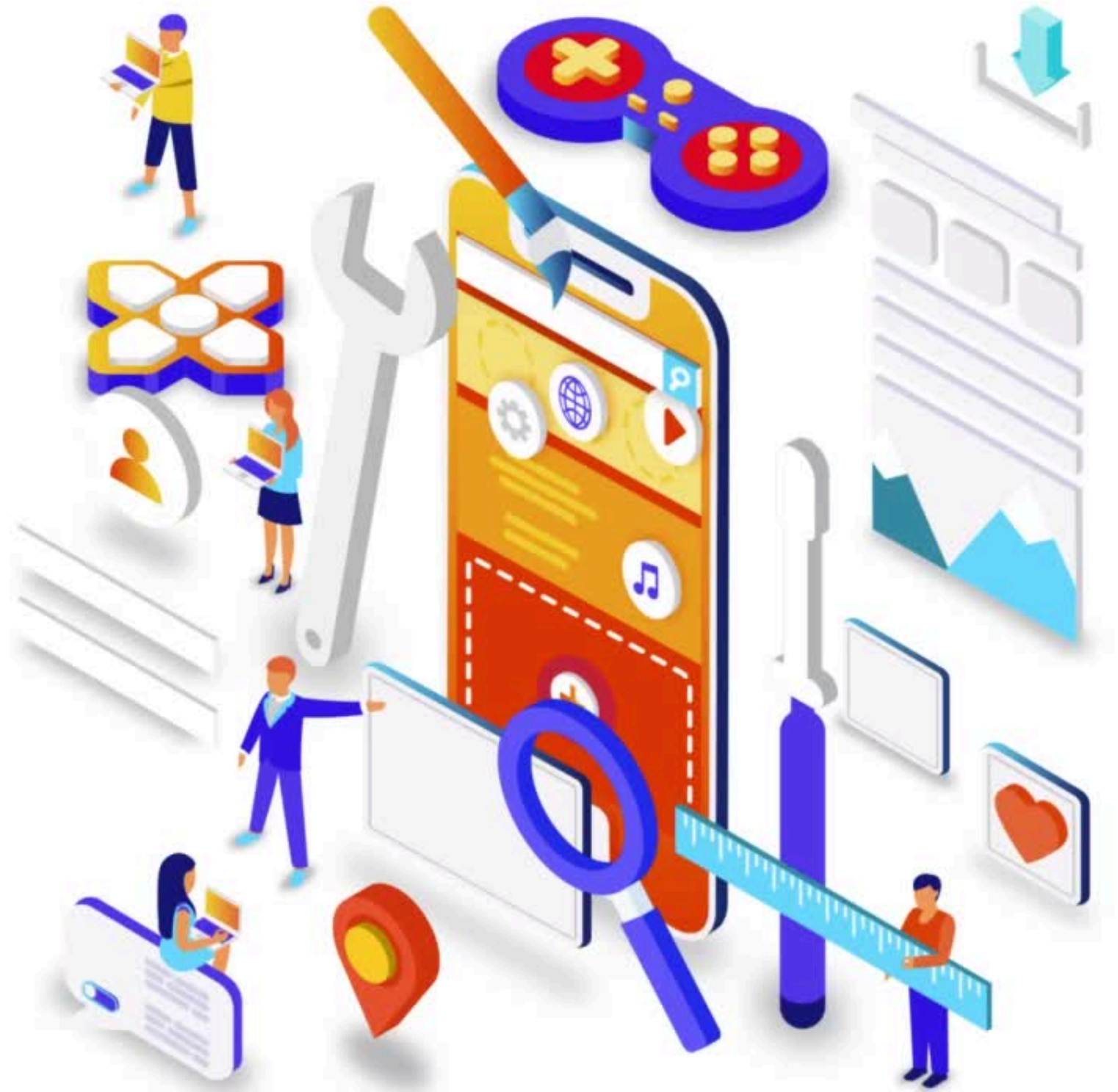


Connect with us
on Instagram.

Click below

[HORECA HUB INDUSTRI JAYA](#)

[HORECA HUB TAMAN SENTOSA](#)

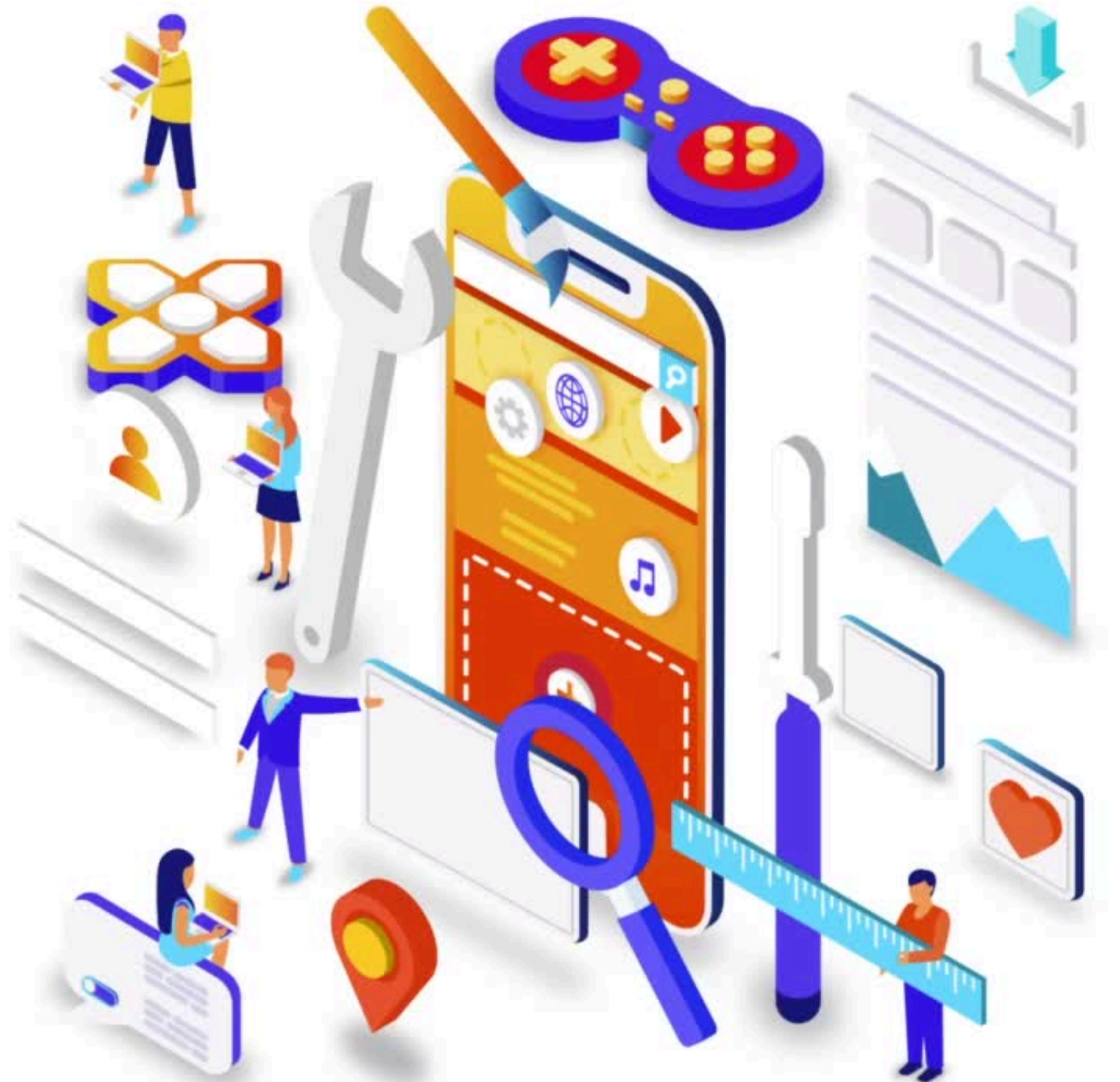


Connect with us
on Tiktok.

Click below

[**HORECA HUB INDUSTRI JAYA**](#)

[**HORECA HUB TAMAN SENTOSA**](#)



Owned by

