



**ELECTRIC COMMERCIAL
ICE CRUSHER**

ITEM CODE : 177780

WHY YOU NEED ICE CRUSHER

An ice crusher can be pretty handy! It's useful for making crushed ice for drinks like cocktails, smoothies, or slushies. It breaks down ice cubes into smaller, more manageable pieces, which can blend or mix more easily with other ingredients. Plus, it's a convenient tool to have, especially when you want to chill drinks quickly without diluting them too much with regular ice cubes.



Ice Crusher



High capacity
for professional use





STAINLESS STEEL ICE CRUSHER

- Shatters 3L ice cubes in just 30 seconds
- Base made in aluminum alloy
- Stainless steel container
- Strong cutlery steel blade





1.

Large Capacity

Stainless steel container, holds 3 liters of ice at a time for crushing.



2.

Strong Cutlery Steel Blade

- *Durable**
- *Easy to clean**
- *Long term use**



3.

Base made in aluminum alloy



52cm

16cm

31cm



Website

[click here](#)

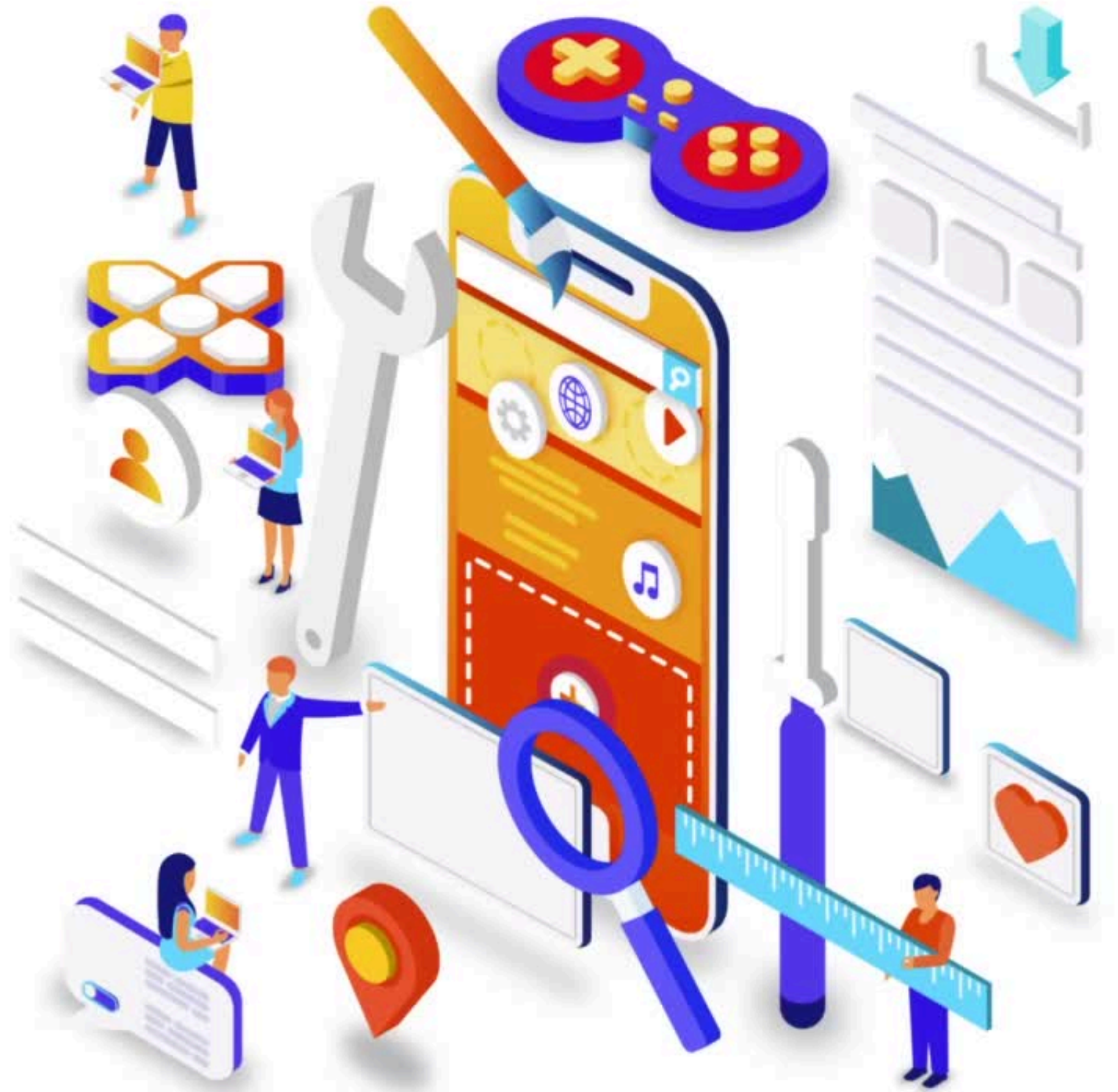


Connect with us

on Youtube.

Click below

[HORECA HUB OFFICIAL](#)

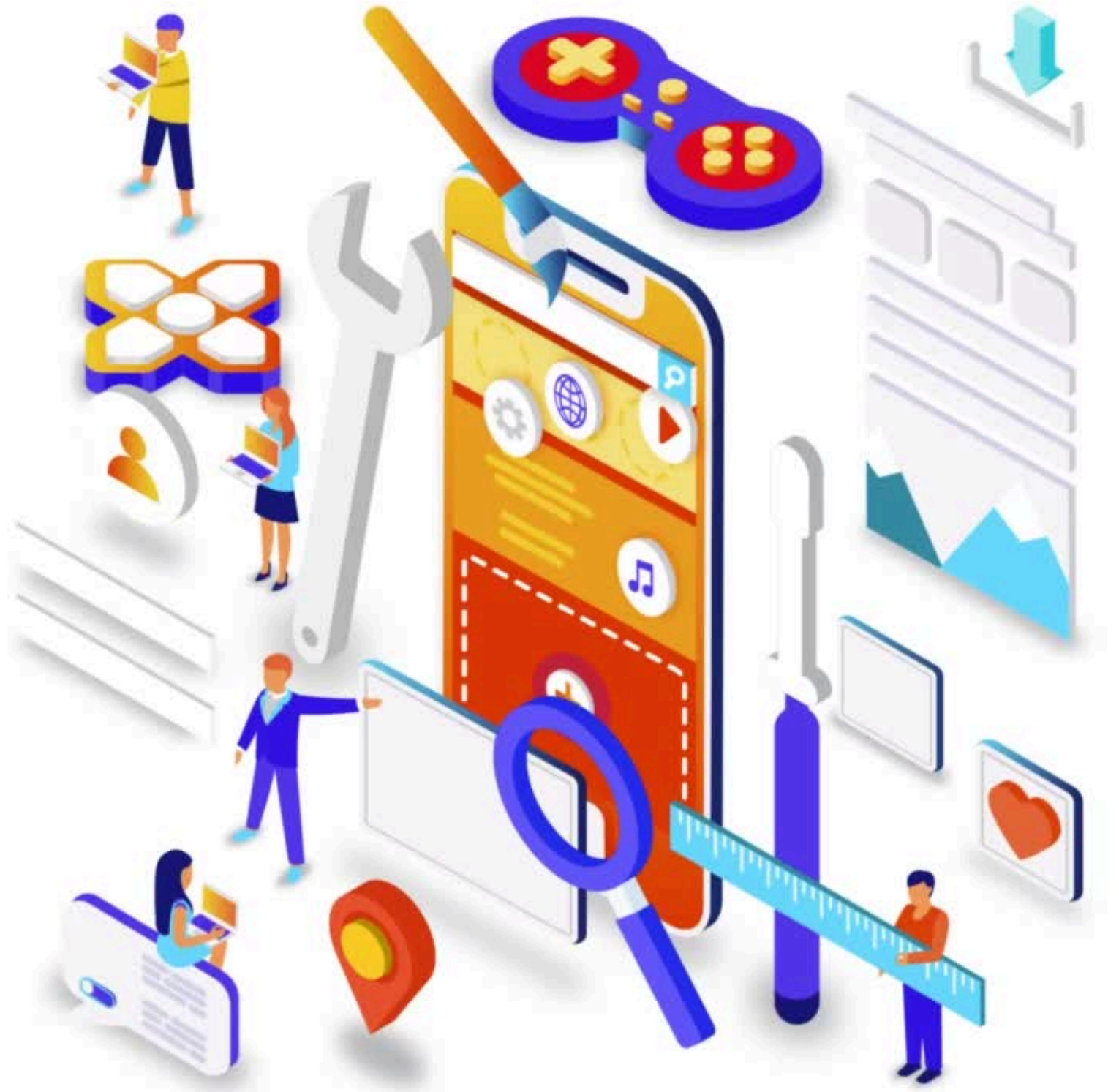


Connect with us
on Instagram.

Click below

[HORECA HUB INDUSTRI JAYA](#)

[HORECA HUB TAMAN SENTOSA](#)



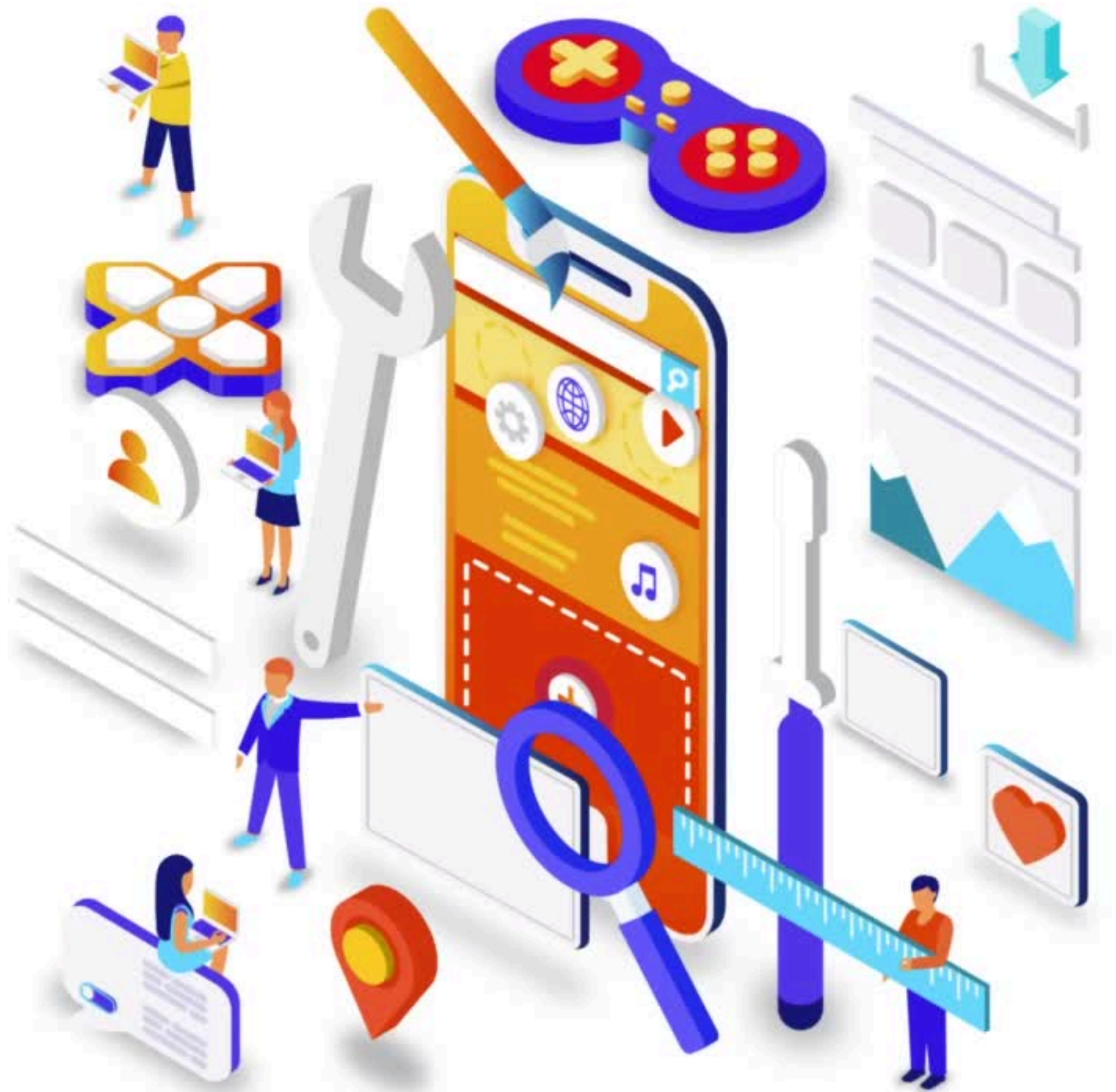
Connect with us

on Tiktok.

Click below

[HORECA HUB INDUSTRI JAYA](#)

[HORECA HUB TAMAN SENTOSA](#)



Owned by

