

ASHOO COMMERCIAL BLENDER

ST-300

ITEM CODE : 111110

RESTAURANTS - HOTELS - CAFE

Bottom cooling port

Reel storage



Ship type power switch



Metal mushroom head

Durable fixed disc



DESCRIPTION OF PRODUCT

MODEL	ST-300		
CATEGORY	BLACK HIGH-END MODEL (1500W)		
VOLTAGE	220 V - 50Hz		
POWER	1500 W		
TOTAL CAPACITY	8 KG		
SPEED	28000 RPM		
CUP CAPACITY	1.0 L		
PRODUCT SIZE	WIDTH	LENGHT	HEIGHT
	20.5 CM	21.5 CM	59 CM

DIMENSION OF PRODUCT



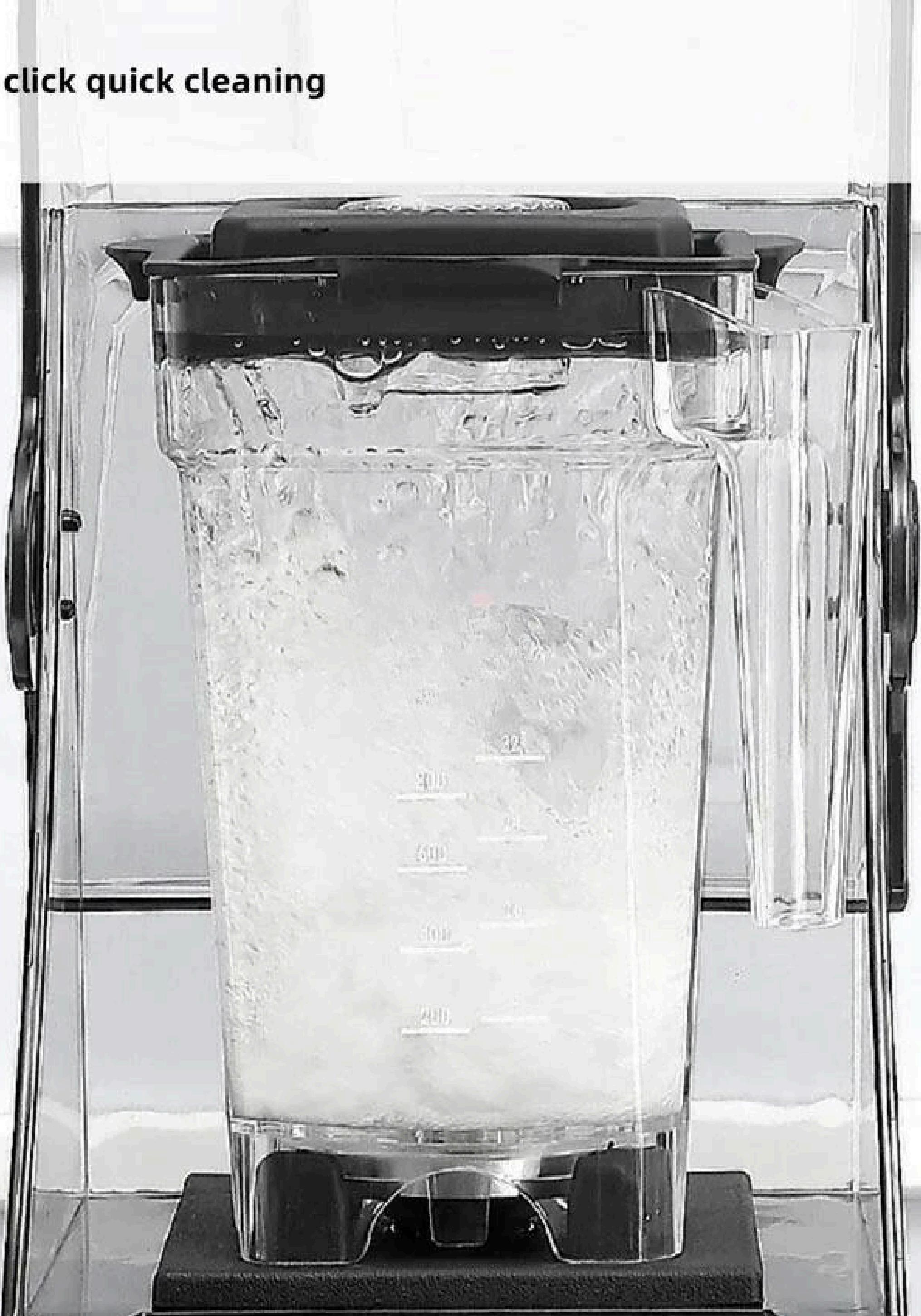
DETAILS OF PRODUCT



6mm thickened cover

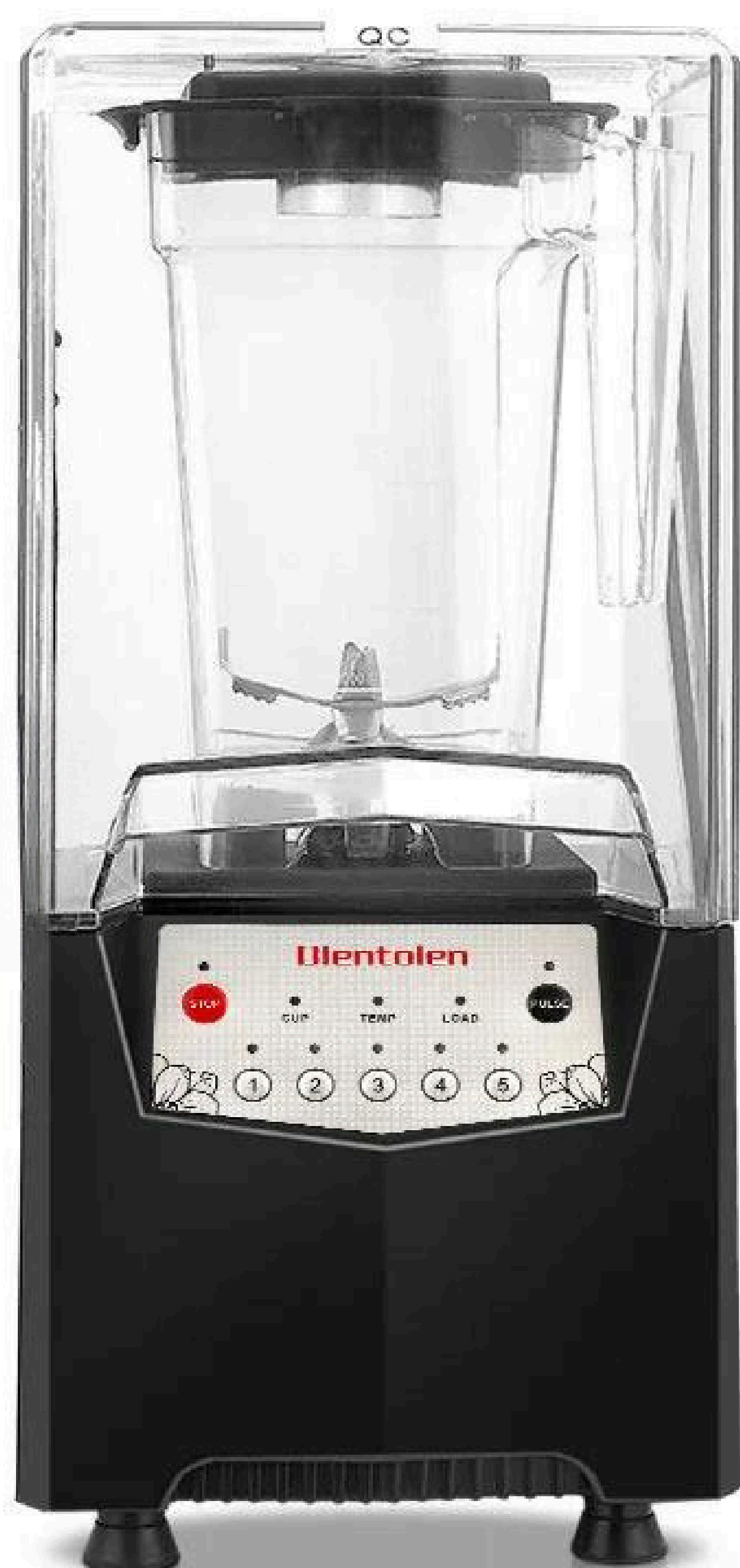


One click quick cleaning



Silent micro pressure

Quiet and undisturbed



Refined steel ice breaking knife

Smoothies are more delicate

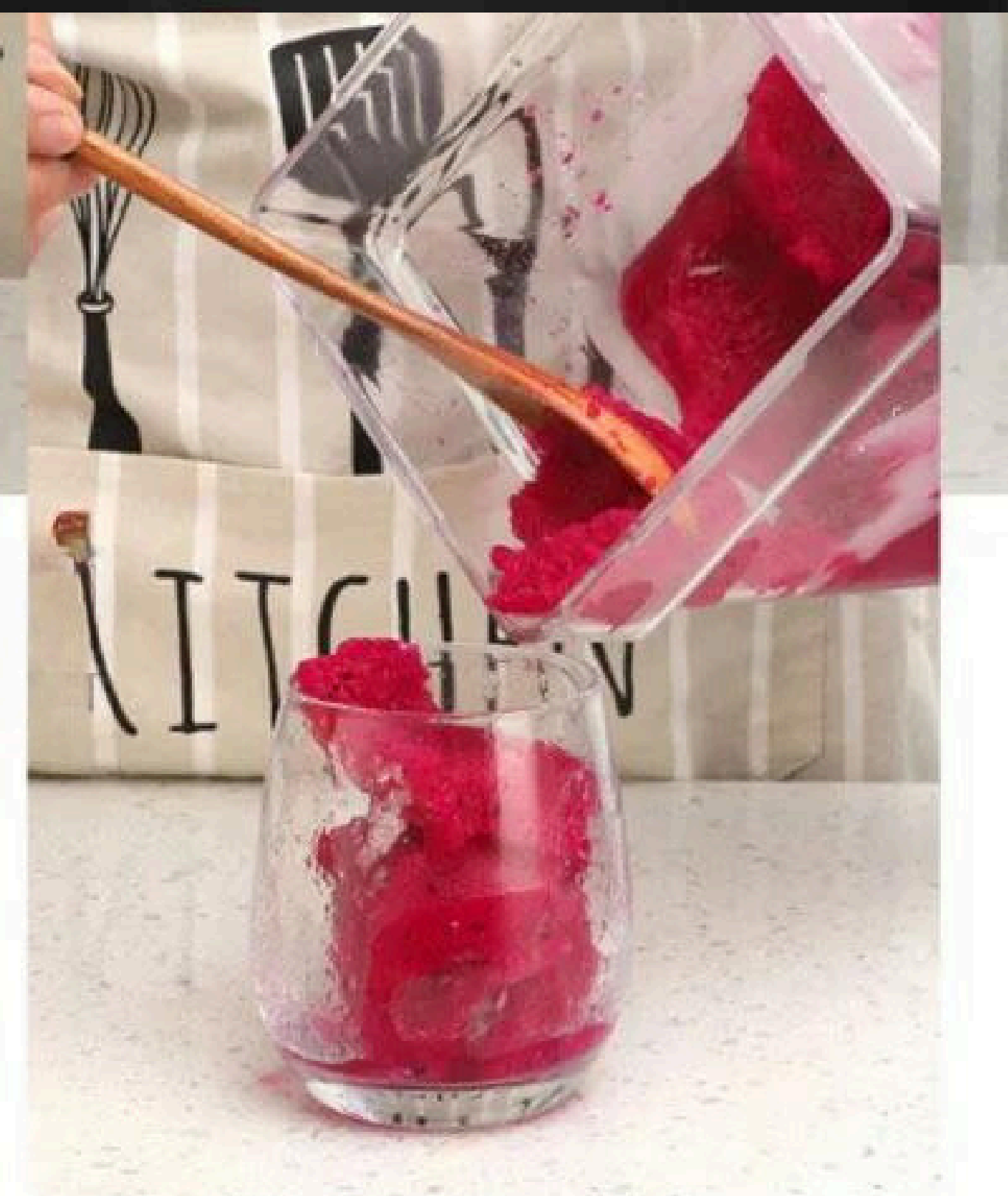
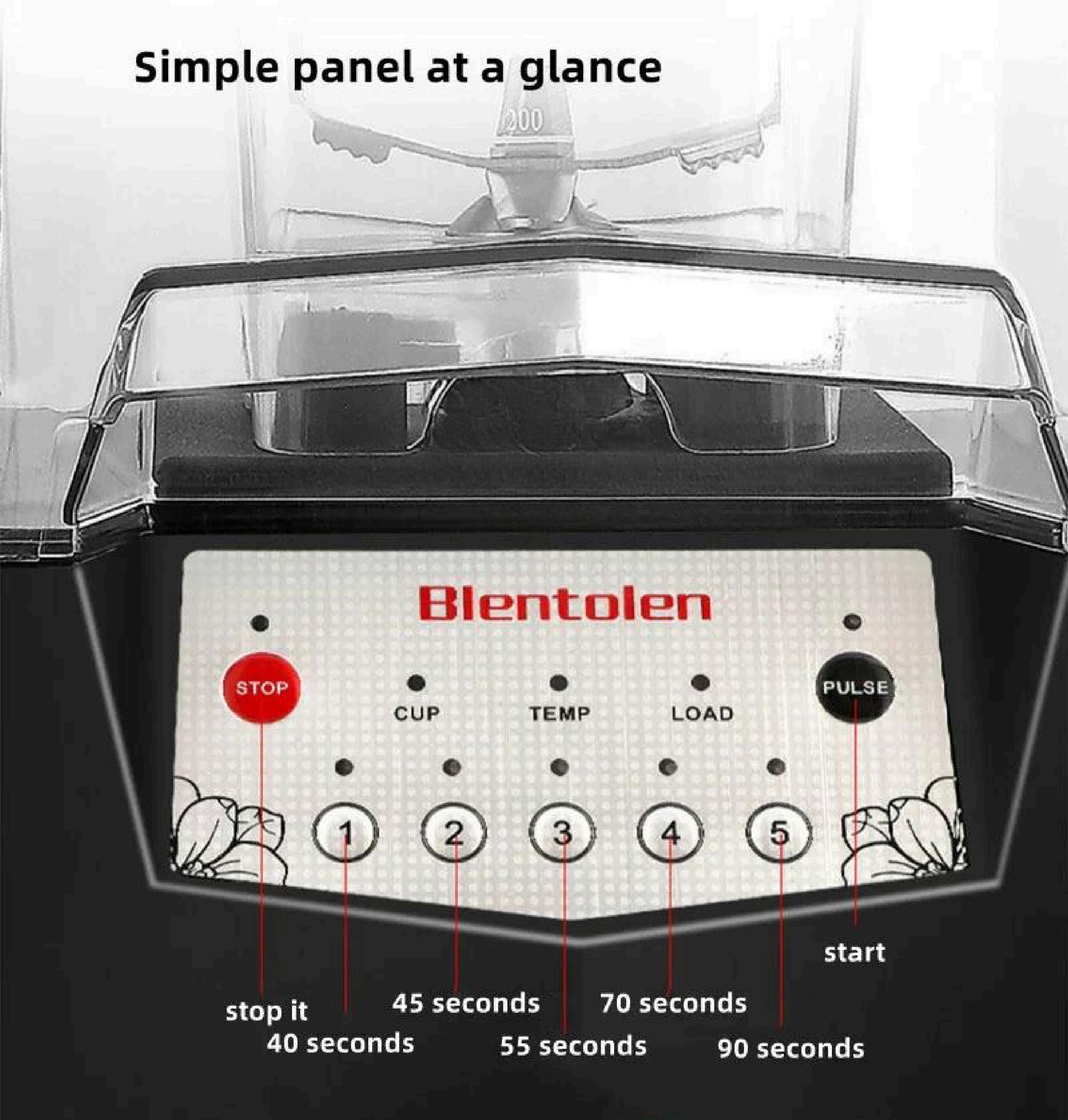


Pure copper durable motor 1500W high power



Intelligent 5-speed mixing

Simple panel at a glance



Website

[click here](#)

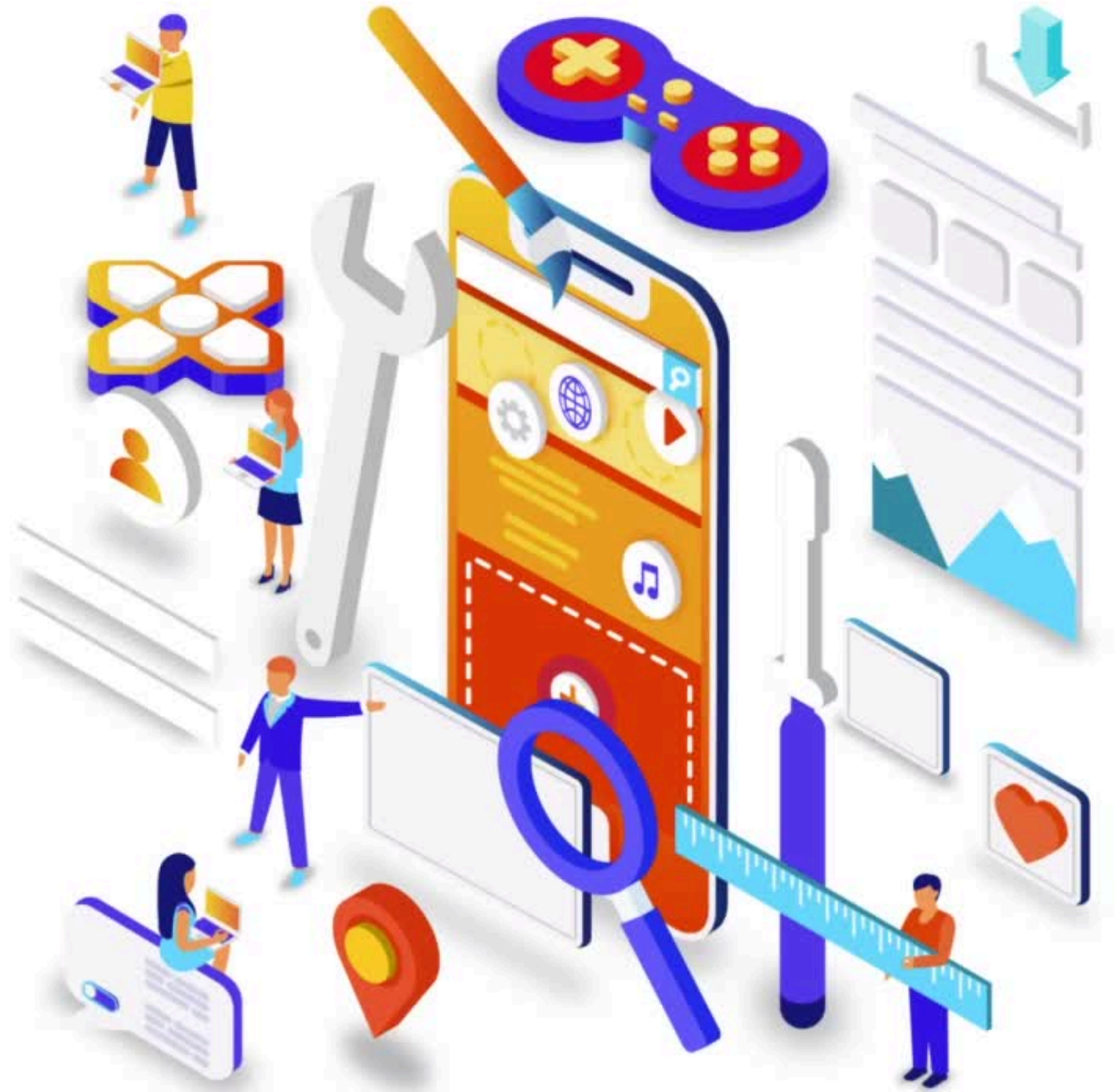


Connect with us

on Youtube.

Click below

[HORECA HUB OFFICIAL](#)



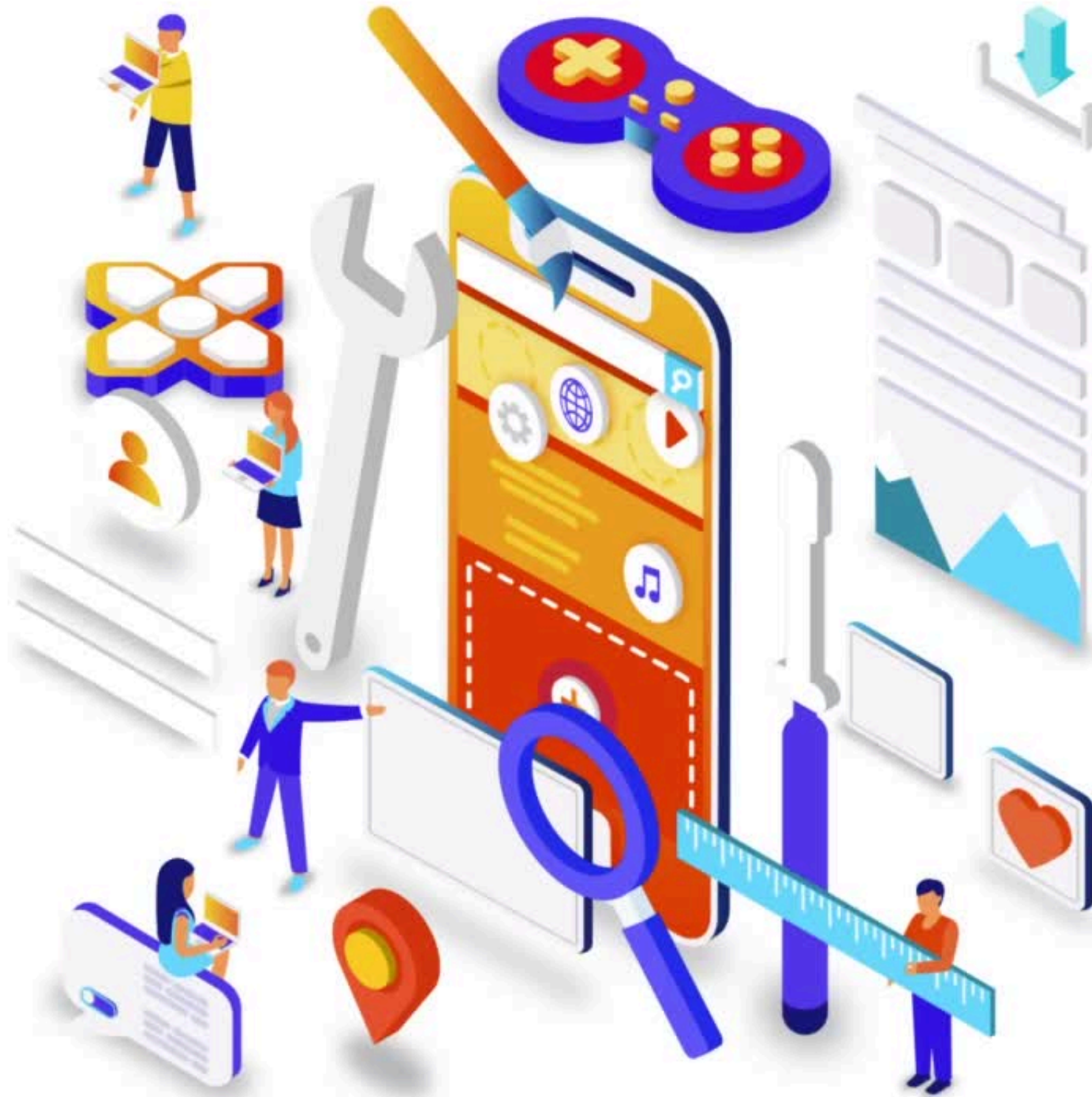
Connect with us

on Facebook.

Click below

[HORECA HUB INDUSTRI JAYA](#)

[HORECA HUB TAMAN SENTOSA](#)

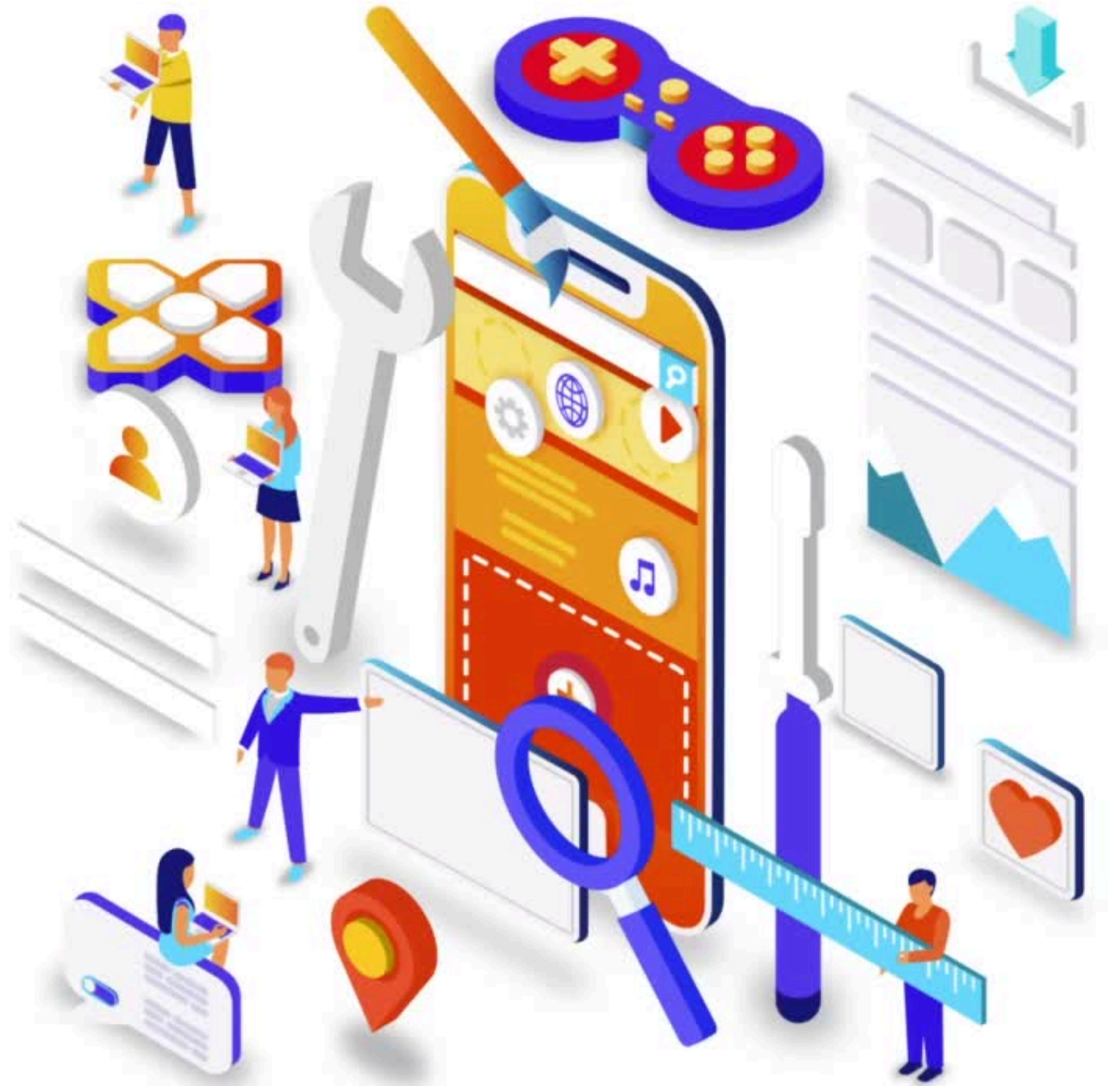


Connect with us
on Instagram.

Click below

[HORECA HUB INDUSTRI JAYA](#)

[HORECA HUB TAMAN SENTOSA](#)



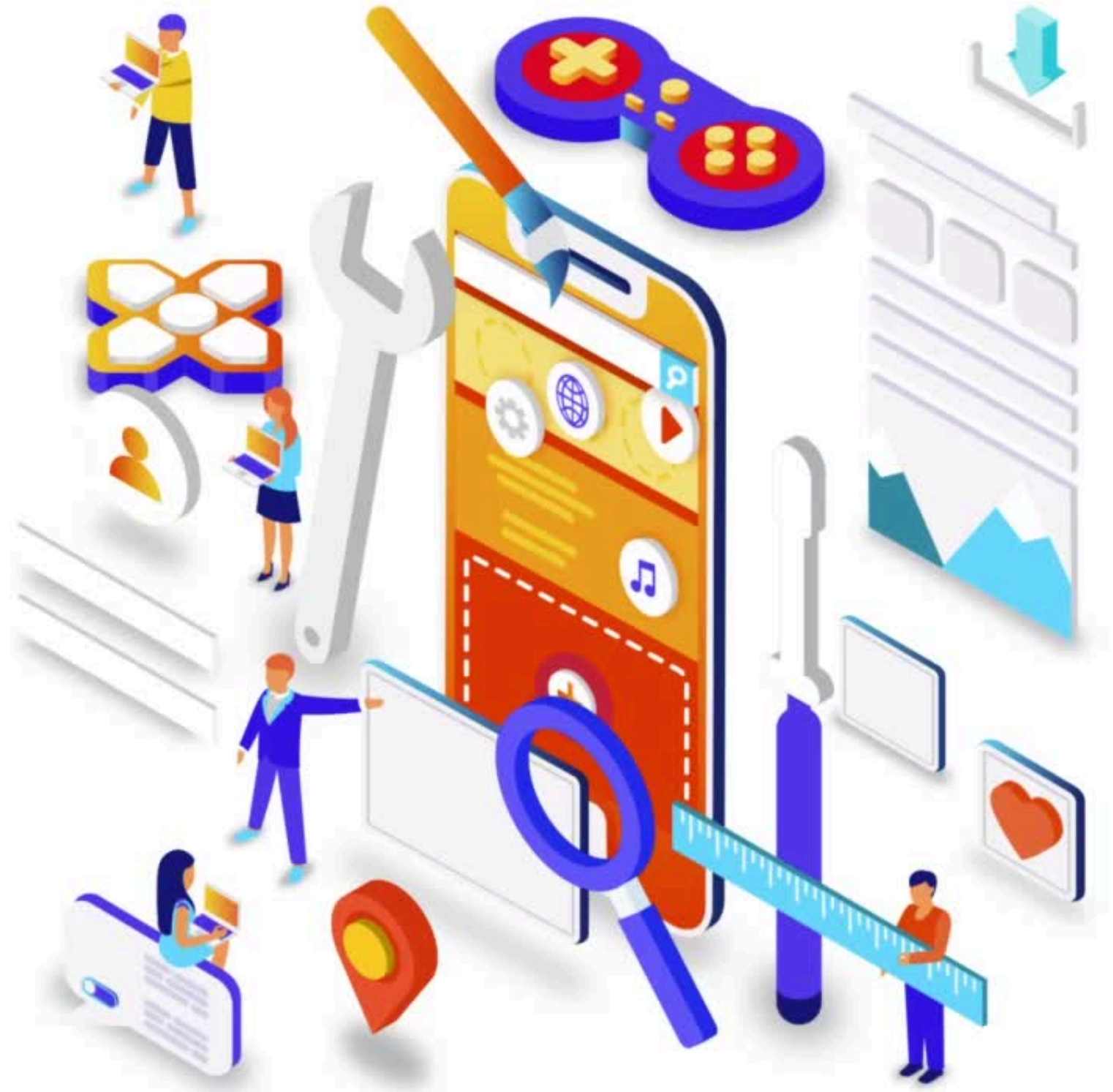
Connect with us

on Tiktok.

Click below

[HORECA HUB INDUSTRI JAYA](#)

[HORECA HUB TAMAN SENTOSA](#)



Owned by

