

**ALPES  
COMBINATION FOOD  
PROCESSOR (CVC-5)**





64cm

## DESCRIPTION

Alpes Combination Food Processor (CVC-5)

Volts: 220V/110V 50Hz/60Hz

Power: 400W

Dimensions: 41x29x64cm

## FEATURES

- A cutting bowl and a vegetable cutter attachment works on the same motor base.
- Polycarbonate lid designed to allow the addition of liquid or ingredients during processing.
- Single speed 1500 rpm for two attachments.
- Compact design and meet most of daily kitchen use.
- Interlocked apparatus included for safety use.
- Direct drive motor.
- Detachable blades and discs.



waterproof switch



low noise



stainless steel blades



high efficiency



high speed motor



easy to operate



easy to clean



safe and durable

**Small Circle Feeding Port**  
suitable for  
carrots, cucumbers and other long food



**Semi-circular Feeding Port**  
suitable for  
onions, potatoes, cabbage, etc





## 1. Feed Handle

magnetic micro switch,  
ensure safe operation

## 2. Top Cover Lock

simple structure,  
convenient operation





### 3. Waterproof Switch

silicone waterproof cover,  
effective anti-splash

### 4. Discharge Mouth

tilt Angle design,  
prevent food material splashing



# BLADES OF VEGETABLE CUTTER



GC003 For Grater / Shredder ( 3mm )



GC007 For Grater / Shredder ( 7mm )



SC002 For Slicer ( 2mm )



SC004 For Slicer ( 4mm )



**COME WITH CUTTING BOWL**



# PROSEDURES FOR REPLACING THE CUTTER HEAD



**1. Lift the safety lock upward to unlock and open the cover.**

**2. Press the chassis lightly with one hand, and rotate the knife plate around with the other hand.**

**3. Release the knife tray and gently extract it, then replace another knife tray.**

**4. Press down to lock the safety latch.**

**HOW TO  
USE?**







# Website

[click here](#)



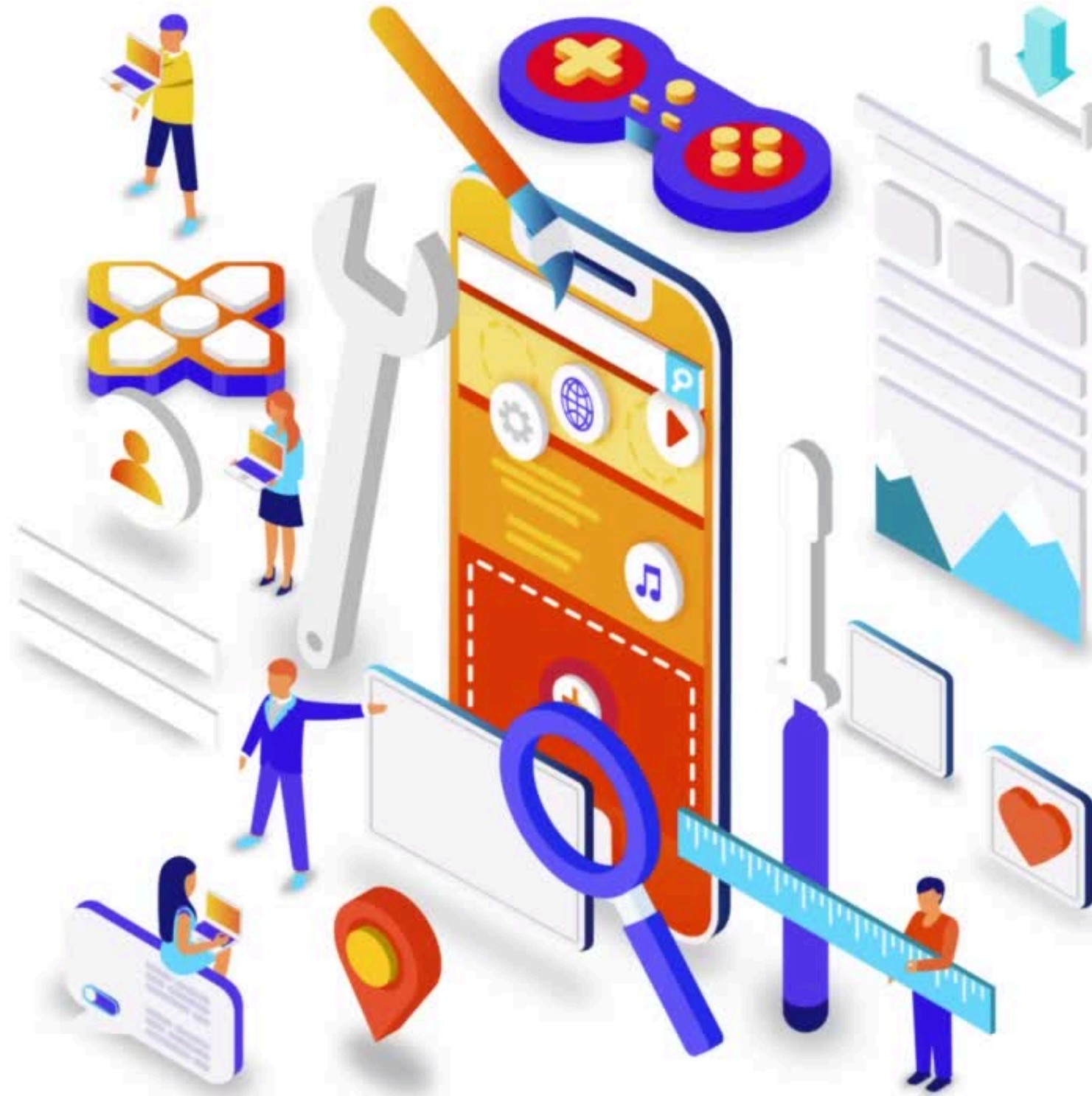
# Connect with us

on Facebook.

Click below

[HORECA HUB INDUSTRI JAYA](#)

[HORECA HUB TAMAN SENTOSA](#)



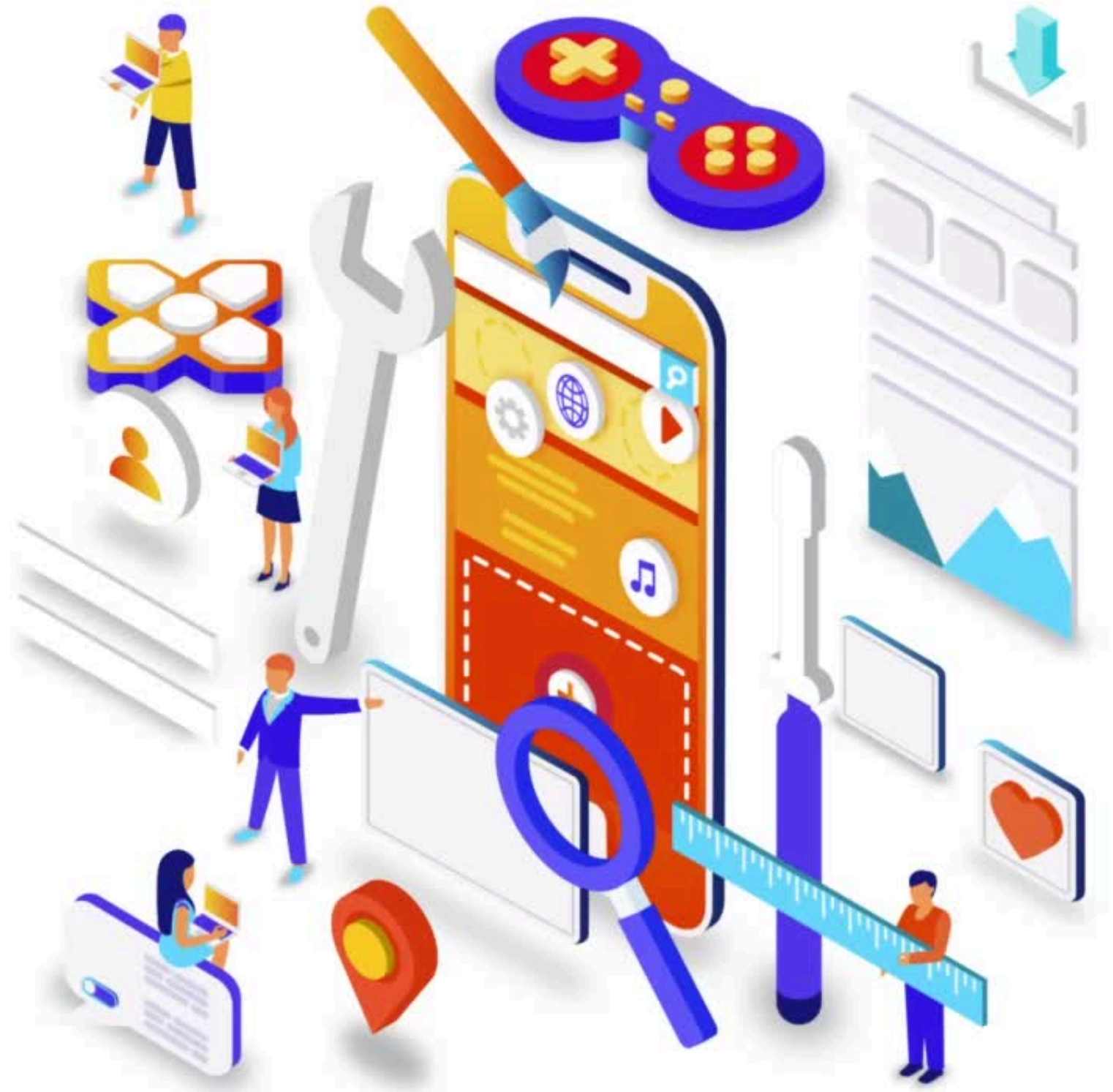
# Connect with us

on Instagram.

Click below

[HORECA HUB INDUSTRI JAYA](#)

[HORECA HUB TAMAN SENTOSA](#)





Owned by

