



LIGHTING WARMER WITH STAND DOUBLE HEAD

A02

ITEM CODE : 183267

RESTAURANTS - HOTELS - CAFE - CATERING

WHAT IS LIGHTING FOOD WARMER ?

A heating lamp for a food warmer is a device designed to keep prepared food at a consistent and safe serving temperature. These lamps are commonly used in various food service settings such as restaurants, buffets, catering events, and more. The primary purpose of the heating lamp is to prevent the food from cooling down and maintain it at an optimal temperature for consumption.

BEST FEATURES

- **DESIGN:** The lamp typically consists of a heat source, often a high-wattage incandescent or infrared bulb, enclosed in a protective housing. The housing may be made of materials like stainless steel or aluminum, providing durability and easy cleaning.
- **HEAT SOURCE:** Infrared bulbs are commonly used for their ability to emit heat without emitting much light. This prevents the food from drying out or becoming discolored due to prolonged exposure to light.



- **ADJUSTABLE HEIGHT:** Many heating lamps are designed with an adjustable height feature. This allows for flexibility in positioning the lamp over different types of food containers or trays.
- **VERSATILITY:** Some models may be designed to accommodate various types of bulbs or heating elements, providing flexibility based on the specific heating requirements of different foods.
- **SAFETY FEATURES:** Safety features such as heat-resistant handles, guards, or shields are incorporated to prevent accidental burns and ensure the overall safety of the users.

DESCRIPTION OF PRODUCT

POWER SOURCE	CORDED ELECTRIC		
VOLTAGE	220 VOLTS		
WATTAGE	250 WATTS		
MATERIAL	STAINLESS STEEL		
DIMENSION	DIAMETER LAMP	DIAMETER BASE	HEIGHT
	19 CM	27 CM	70 CM

DIMENSION OF PRODUCT



DETAILS OF PRODUCT



MORE DETAILS



TOP UNIVERSAL HOSE
360 ° free rotation



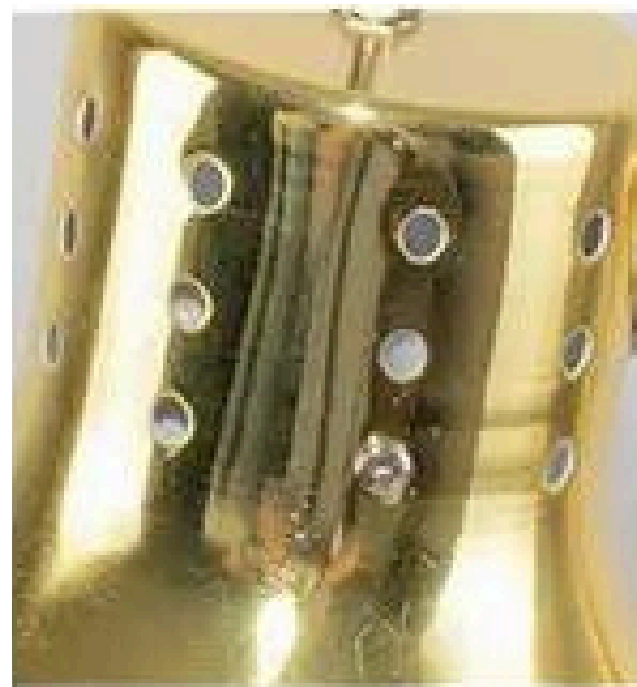
**BEAUTIFUL MIRROR ALL
STEEL**
All-match restaurant
environment



**HIGH QUALITY LAMP
HOLDER**
It is not difficult to
disassemble and
assemble



WEIGHTED BASE
Security does not tilt



**SCATTERED COOLING
HOLE**
Extend bulb life

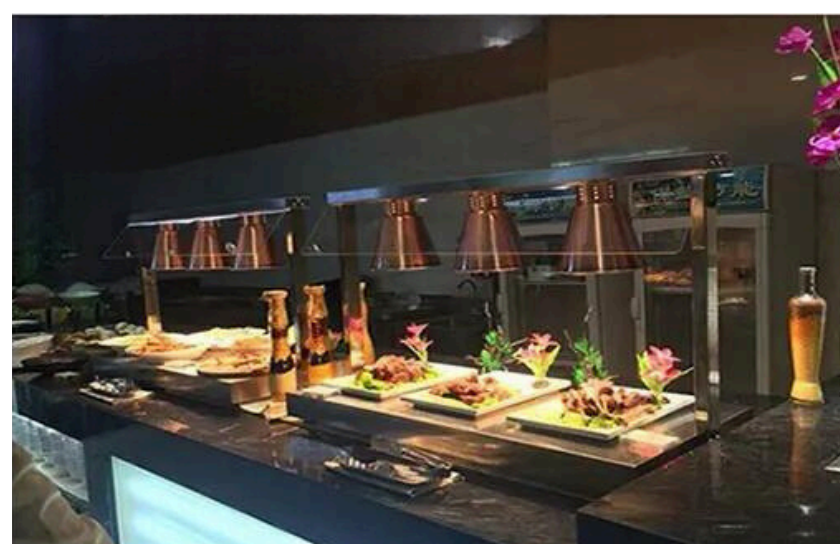


**ONE-BUTTON ROCKER
SWITCH**
Safe and convenient
atmosphere

WIDE RANGE OF APPLICATION



HOTEL KITCHEN



RESTAURANT



BUFFET

Website

[click here](#)



Owned by

