



**HOMELUX COMMERCIAL  
ELECTRIC GRIDDLE**

**HBEG-820**

**ITEM CODE : 167715**

**RESTAURANTS - HOTELS - CAFE**

## DESCRIPTION OF PRODUCT

MODAL	HBEG - 820		
POWER	2.2 Kw + 2.2 Kw		
VOLTAGE	220 - 240 V		
MATERIAL	STAINLESS STEEL		
PLATE SIZE	72.8 CM + 40.1 CM		
DIMENSION	WIDTH	LENGHT	HEIGHT
	50 CM	73 CM	23 CM

## DIMENSION OF PRODUCT



### FACTORY DIRECT SALES

We only make high quality products

# 201

## MADE OF STAINLESS STEEL

### Thickened stainless steel plate

Not easy to deform and long in service life.



### Separate temperature control switch

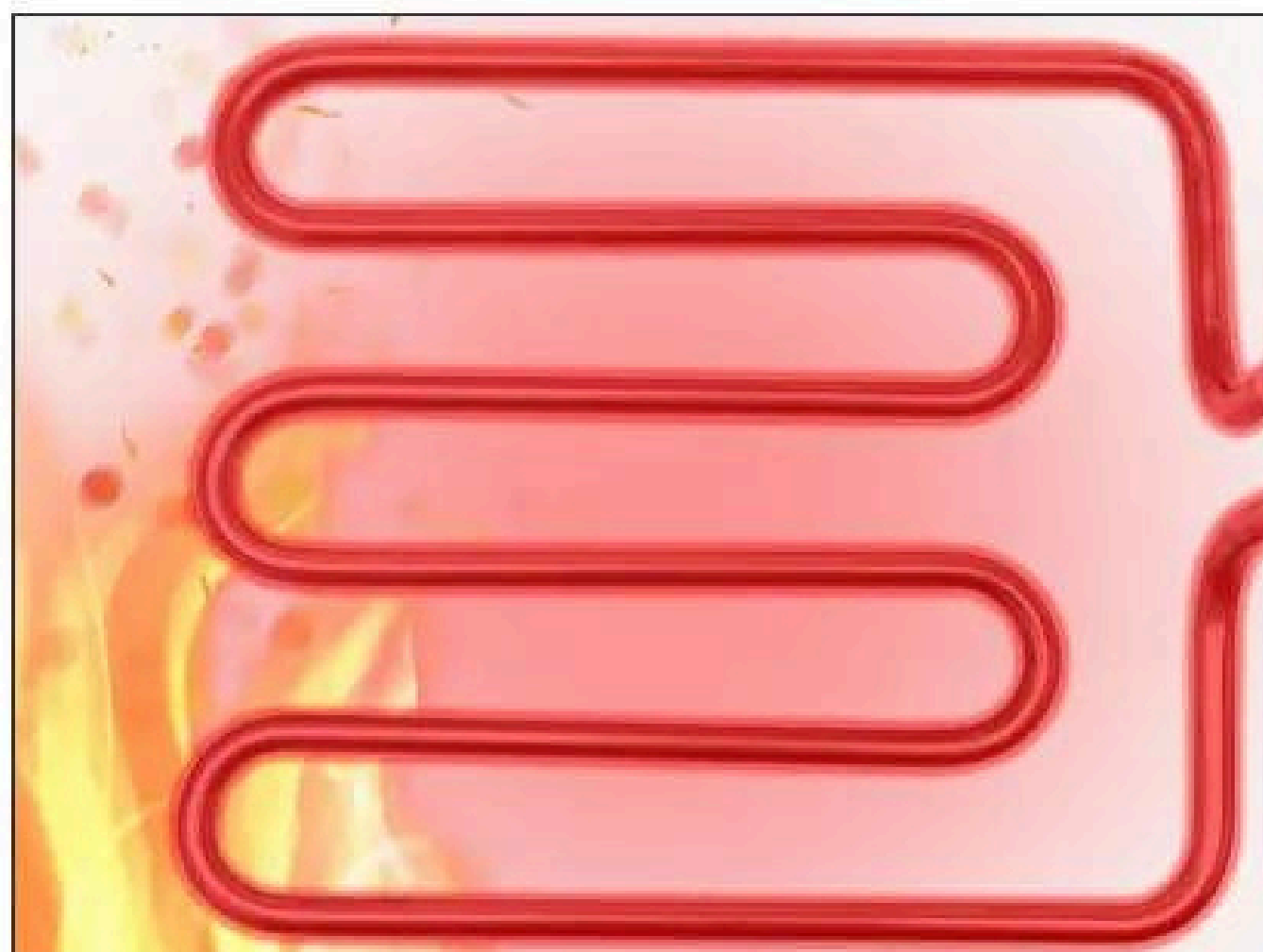
Control the temperature accurately, output the firepower stably, and use simply.



## MORE DETAILS

### U-shaped heating tube

Heat pipes are laid under the baking board, heated quickly and evenly.

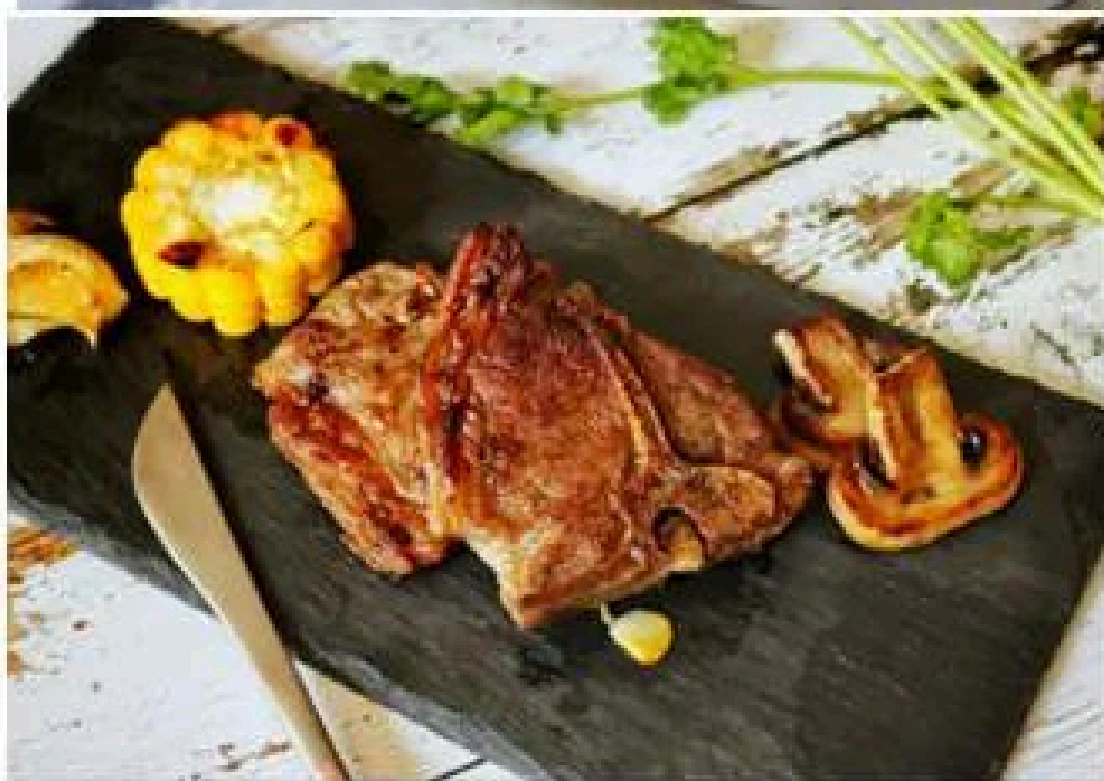


### Oil leakage hole

Collecting food scraps and keeping the board face clean.



## PRODUCT STRUCTURE



# Website

[click here](#)

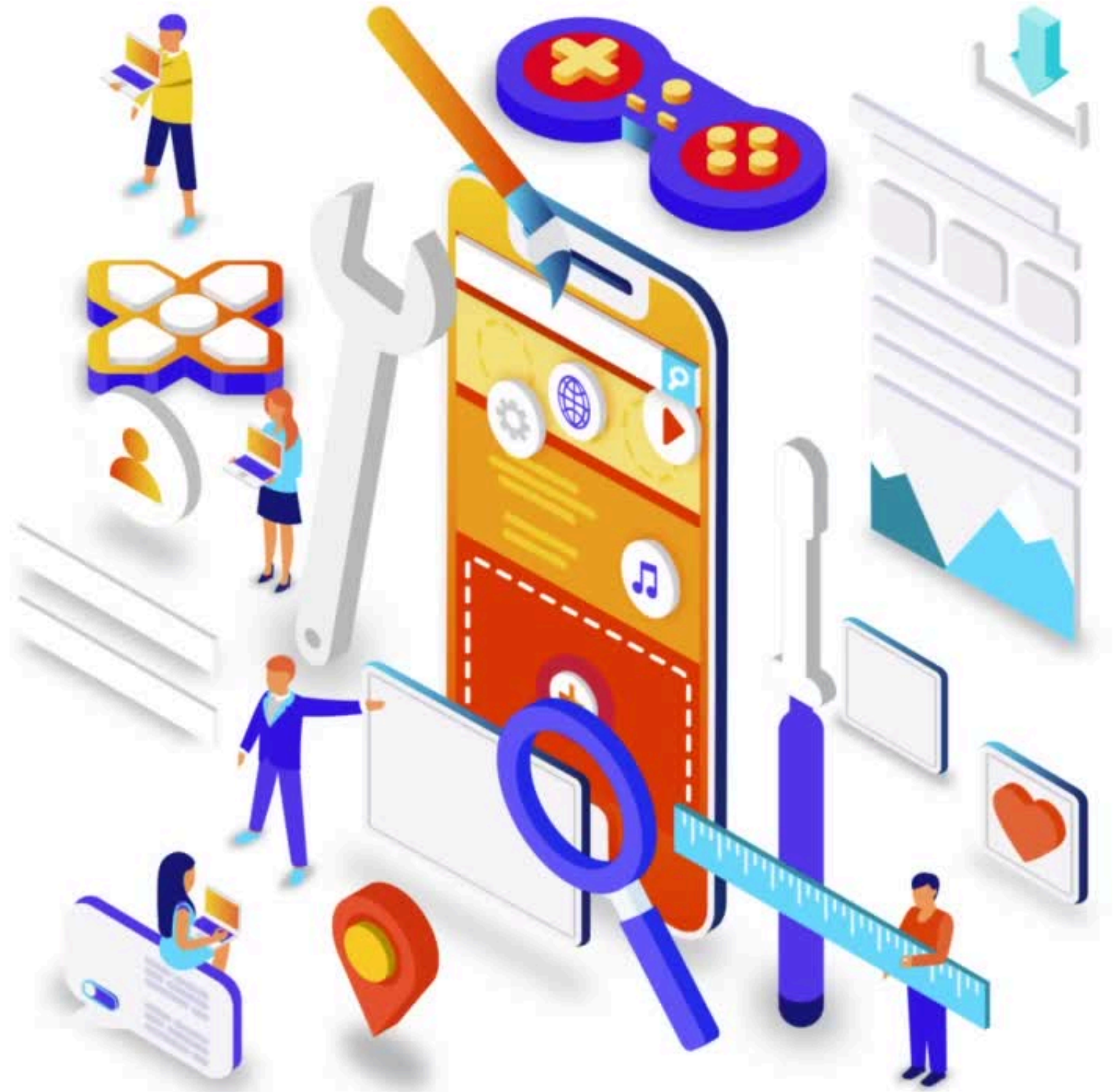


# Connect with us

on Youtube.

Click below

[HORECA HUB OFFICIAL](#)



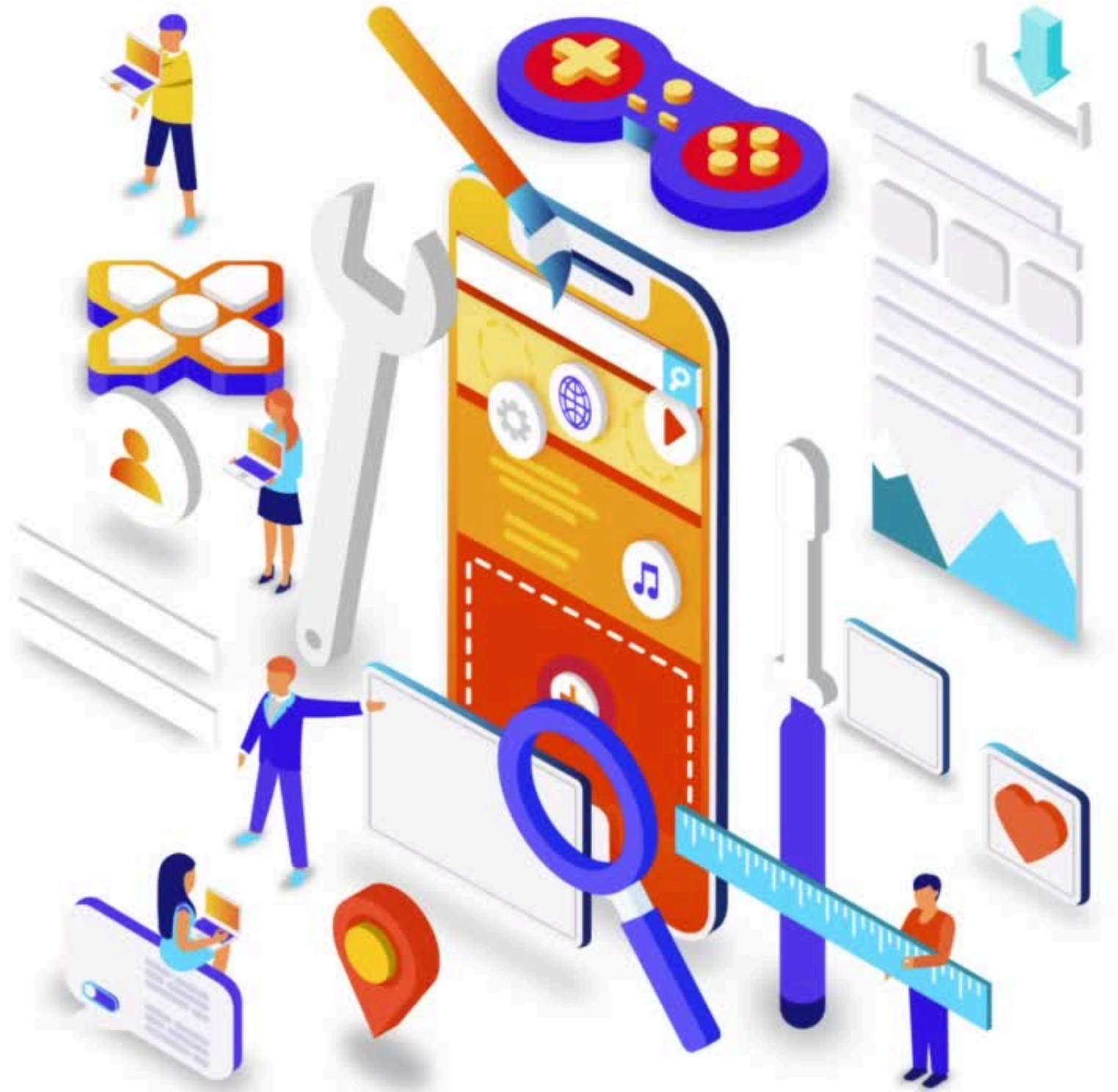
# Connect with us

on Facebook.

Click below

[HORECA HUB INDUSTRI JAYA](#)

[HORECA HUB TAMAN SENTOSA](#)



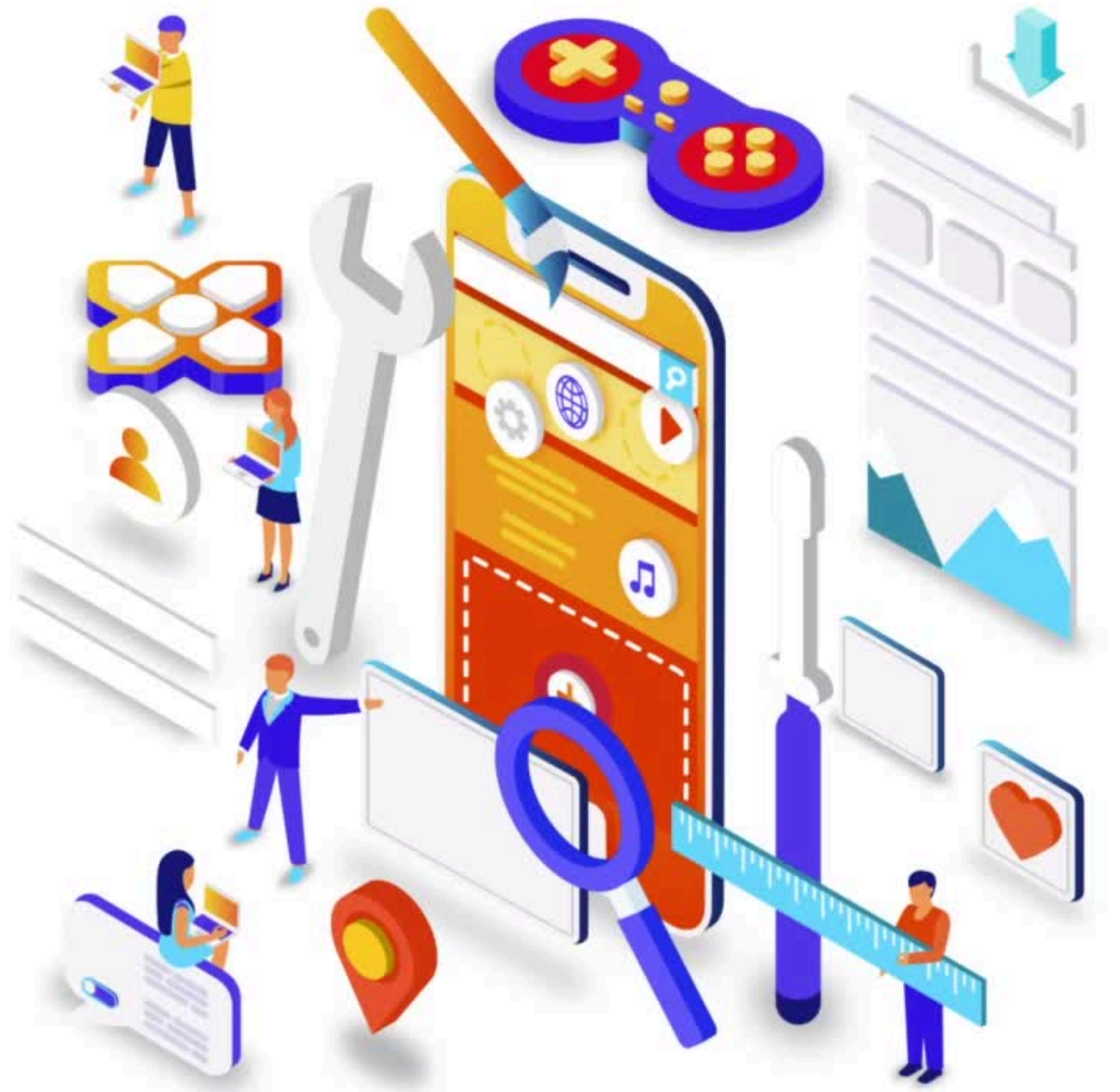
# Connect with us

on Instagram.

Click below

[HORECA HUB INDUSTRI JAYA](#)

[HORECA HUB TAMAN SENTOSA](#)



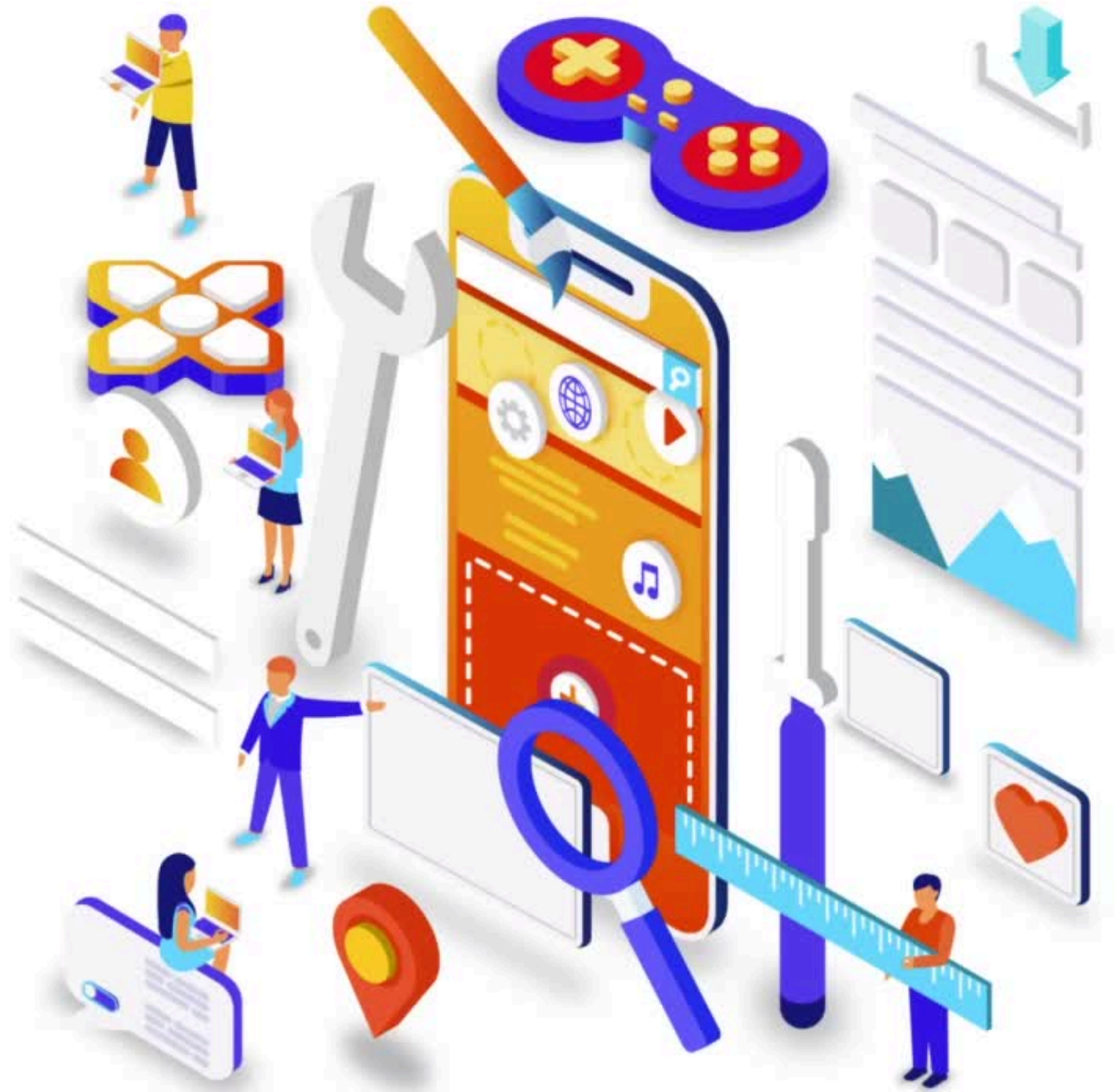


**Connect with us**  
on Tiktok.

Click below

[HORECA HUB INDUSTRI JAYA](#)

[HORECA HUB TAMAN SENTOSA](#)



Owned by

