

# **HOT DISPLAY WARMER**

**ITEM CODE : 180152**

**RESTAURANTS - CAFE - CONVENIENCE STORE**

# WHAT IS HOT DISPLAY WARMER ?

A "Hot Display Warmer" typically refers to a piece of equipment used in the foodservice industry to keep prepared food items warm and ready for serving. It is commonly used in settings such as restaurants, cafeterias, catering events, and other food establishments where maintaining the temperature of food is crucial.

## PRODUCT DESCRIPTION

VOLTAGE : 220V

POWER : 0.8KW

FREQUENCY : 50 - 60 Hz

DIMENSION : 380x460x600 mm



# PRODUCT SPECIFICATION

- Electric food warming cabinet.
- A generous sized shelves.
- One stainless steel trays, 2 netting tray, perfect for displaying pies, pastries, and more.
- Easy access sliding doors.
- 4 rubber feet ideal providing extra stability.
- Water tray to keep the food fresh.
- Internal light, for a wonderful display.
- Maintains quality of food.
- Save time and energy.
- Easy to clean.

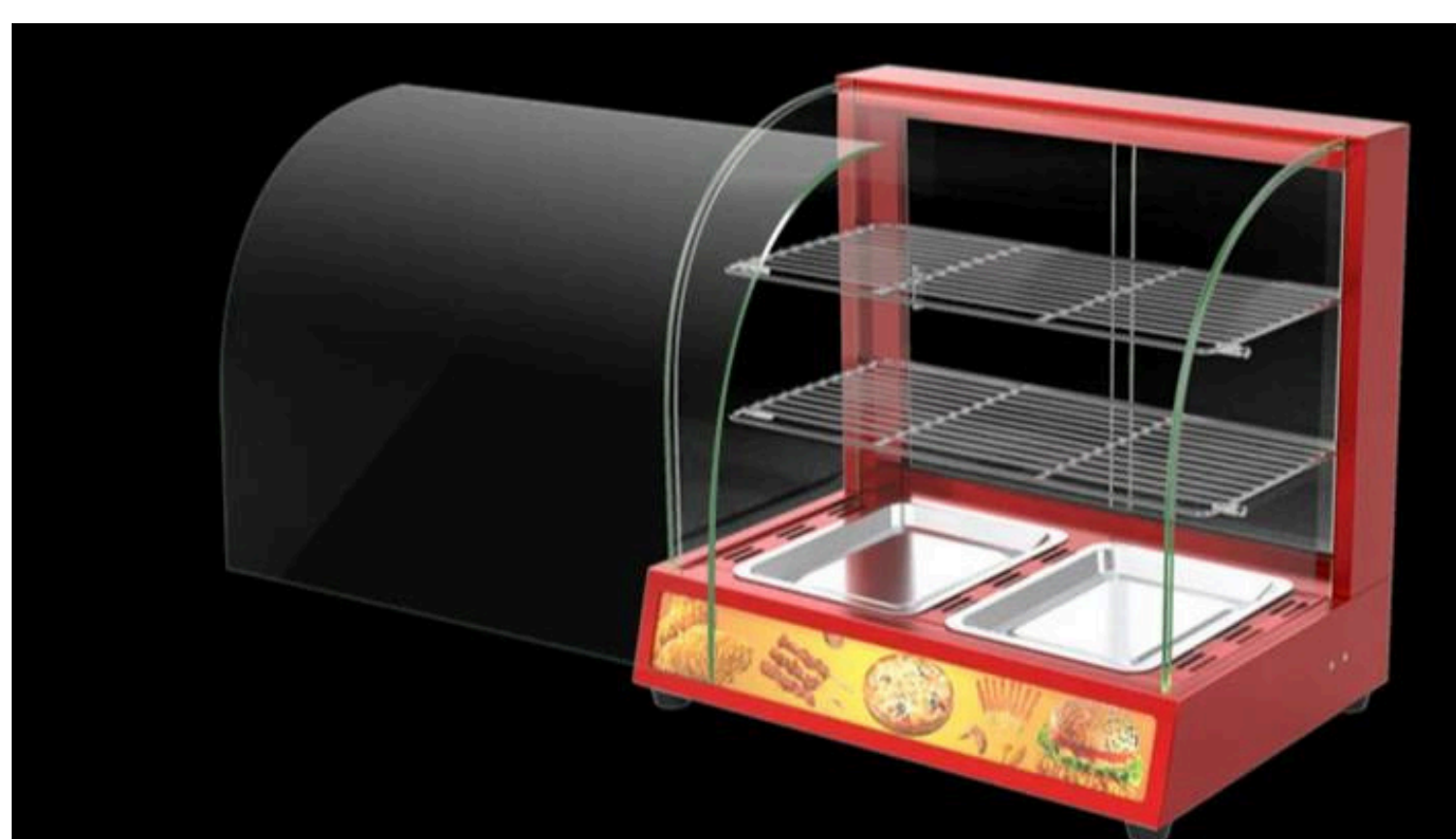


# DIMENSION



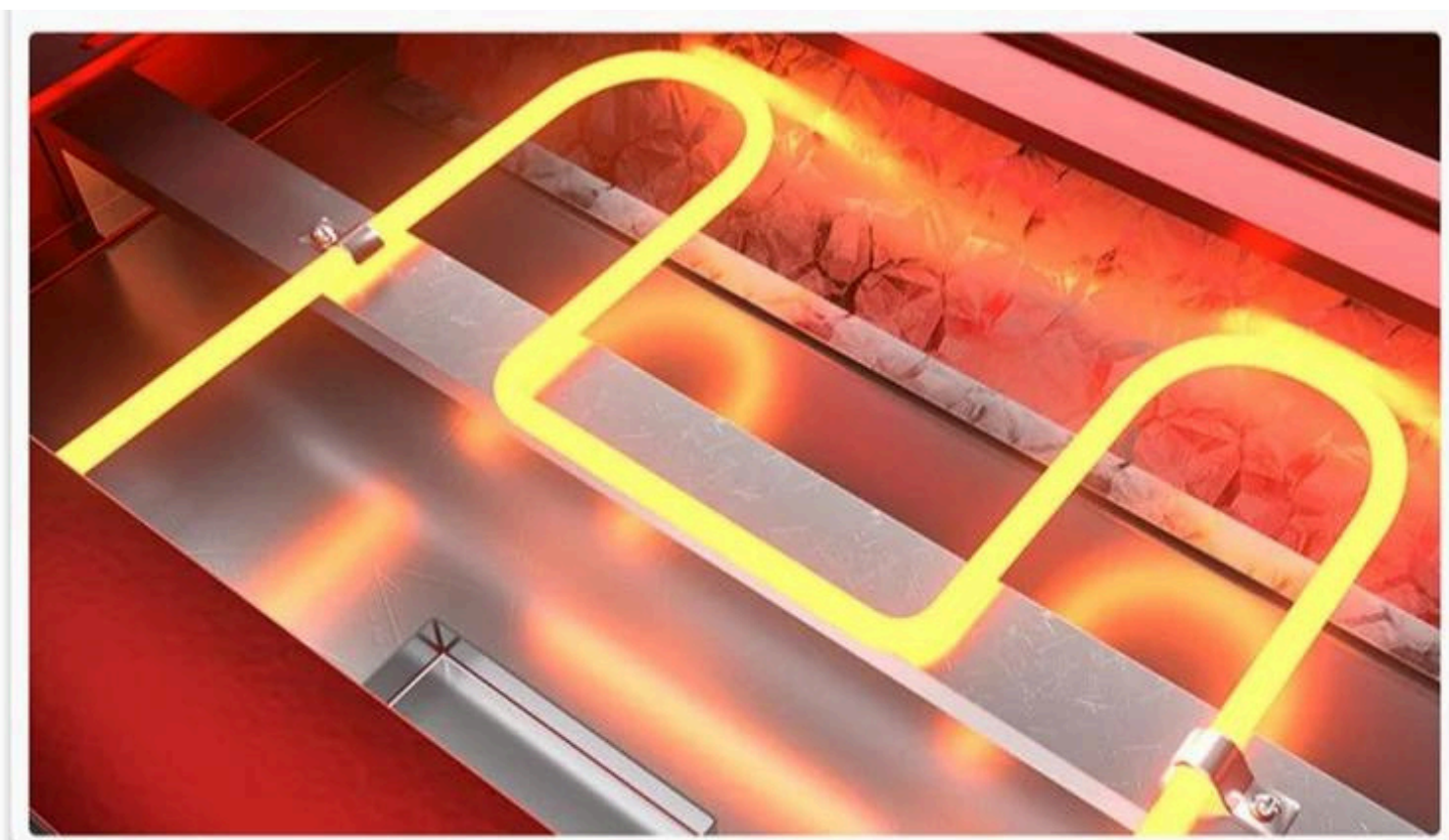
# PRODUCT ADVANTAGE

Curve tempered glass provides maximum visibility and greater strength and safety.



The knob can precisely control the indoor temperature. Its temperature range is 30 to 110 degree Celsius.

Stainless steel heating pipes can increase heating area and reduce energy consumption and provide higher safety.



# Website

[click here](#)

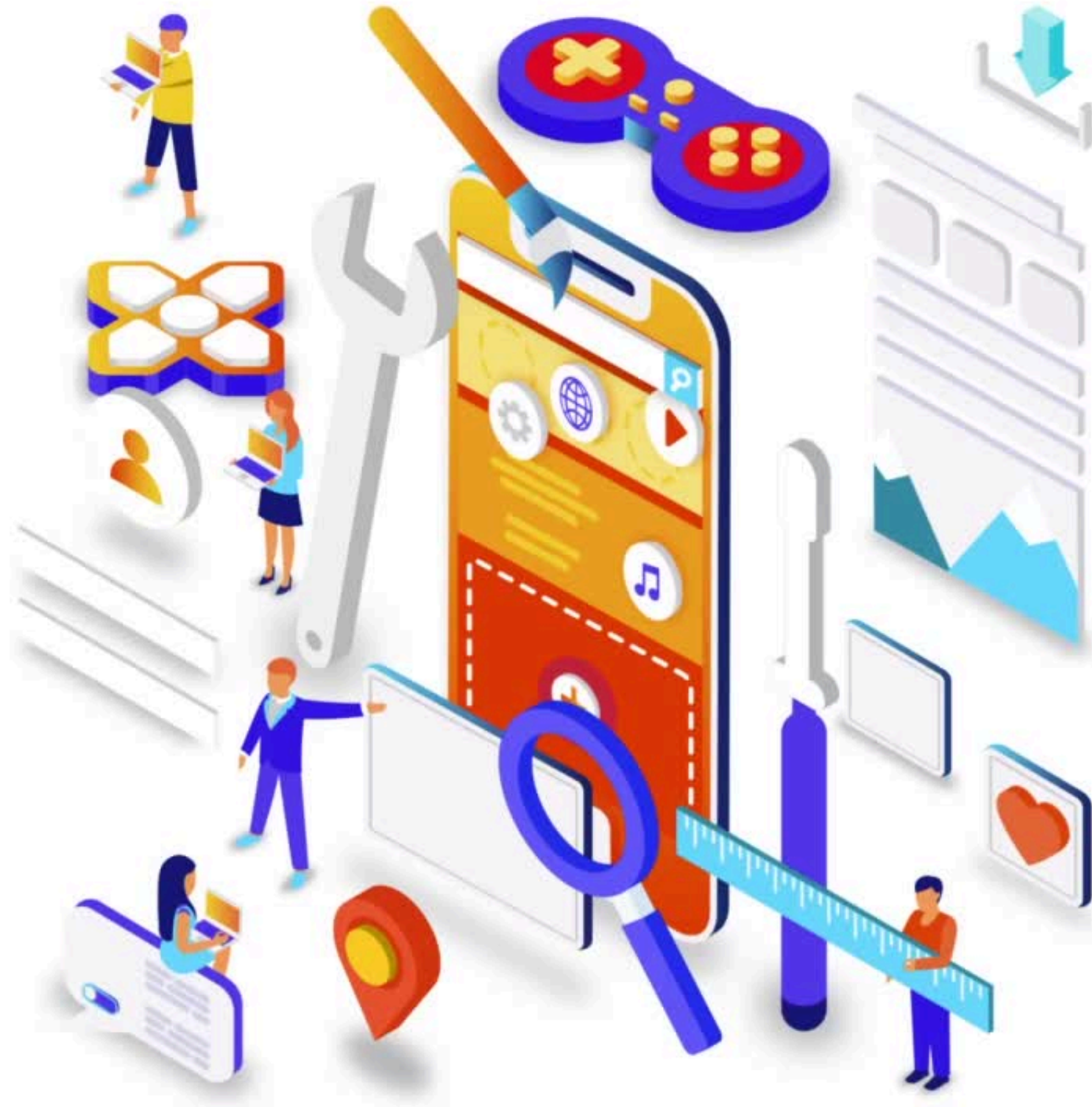


# Connect with us

on Youtube.

Click below

[HORECA HUB OFFICIAL](#)



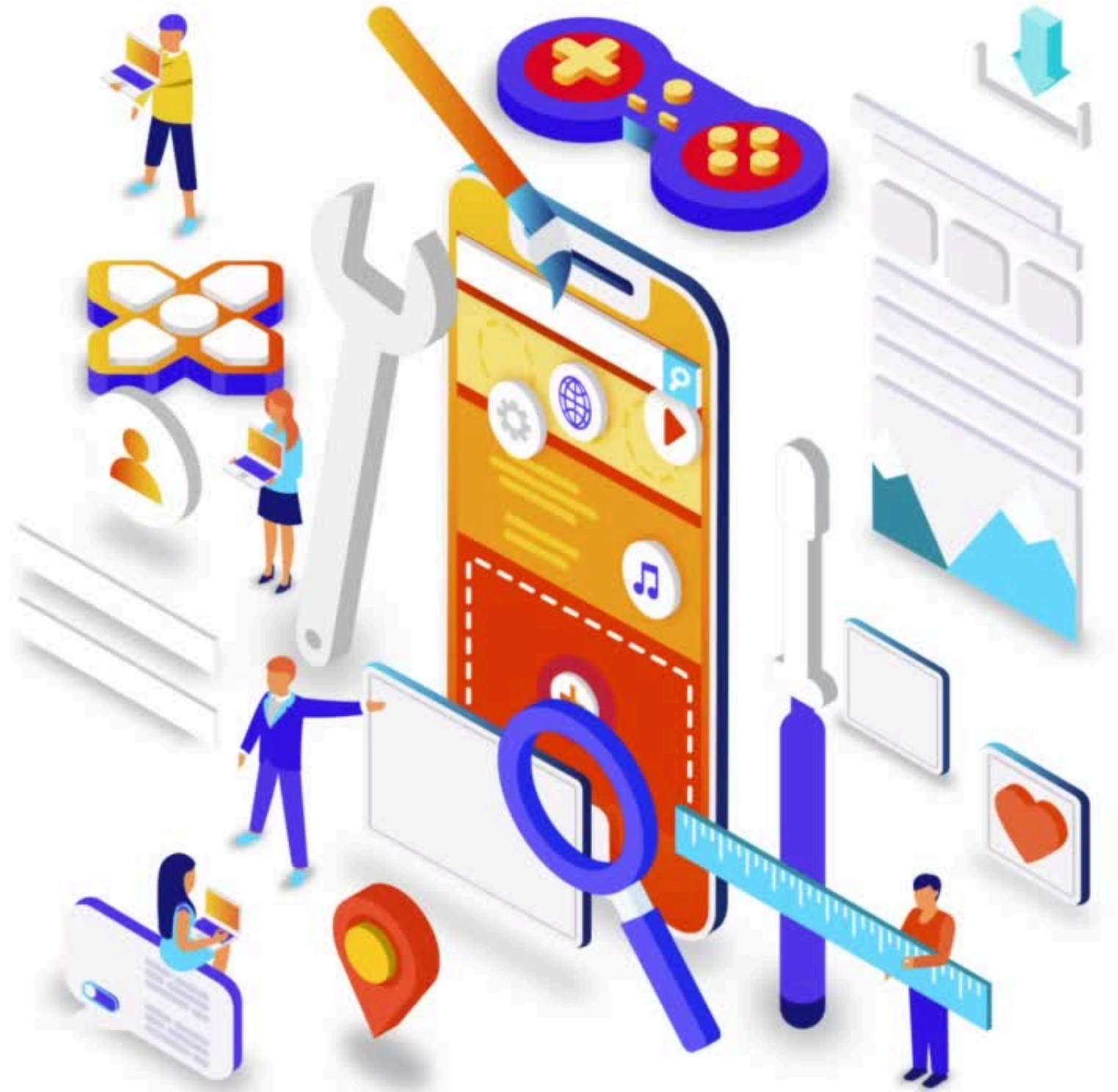
# Connect with us

on Facebook.

Click below

[HORECA HUB INDUSTRI JAYA](#)

[HORECA HUB TAMAN SENTOSA](#)



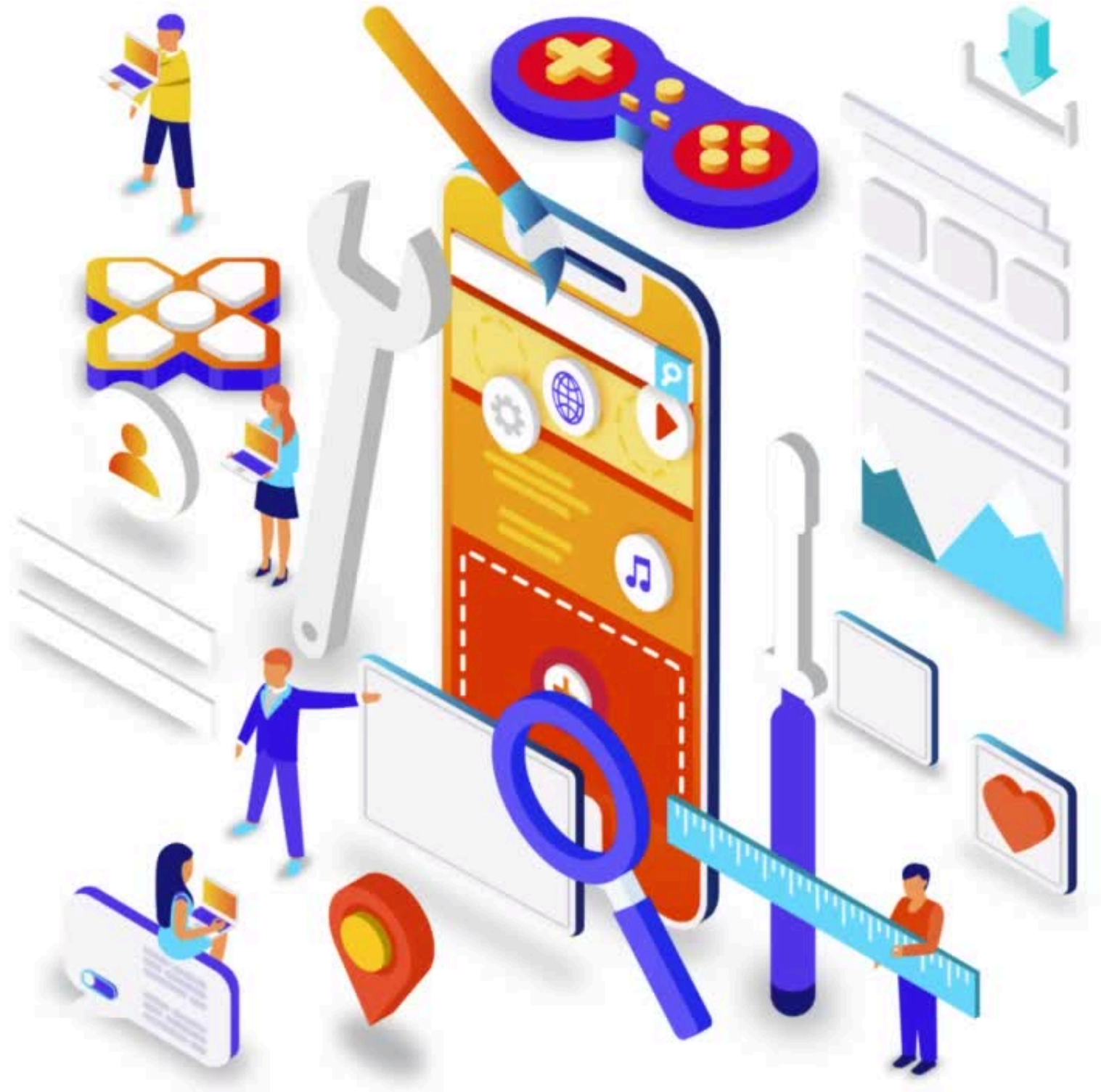
# Connect with us

on Instagram.

Click below

[HORECA HUB INDUSTRI JAYA](#)

[HORECA HUB TAMAN SENTOSA](#)







Owned by

