



**MARUPIN GAS DEEP
FRYER (TABLE TOP)**

AT-12LX2

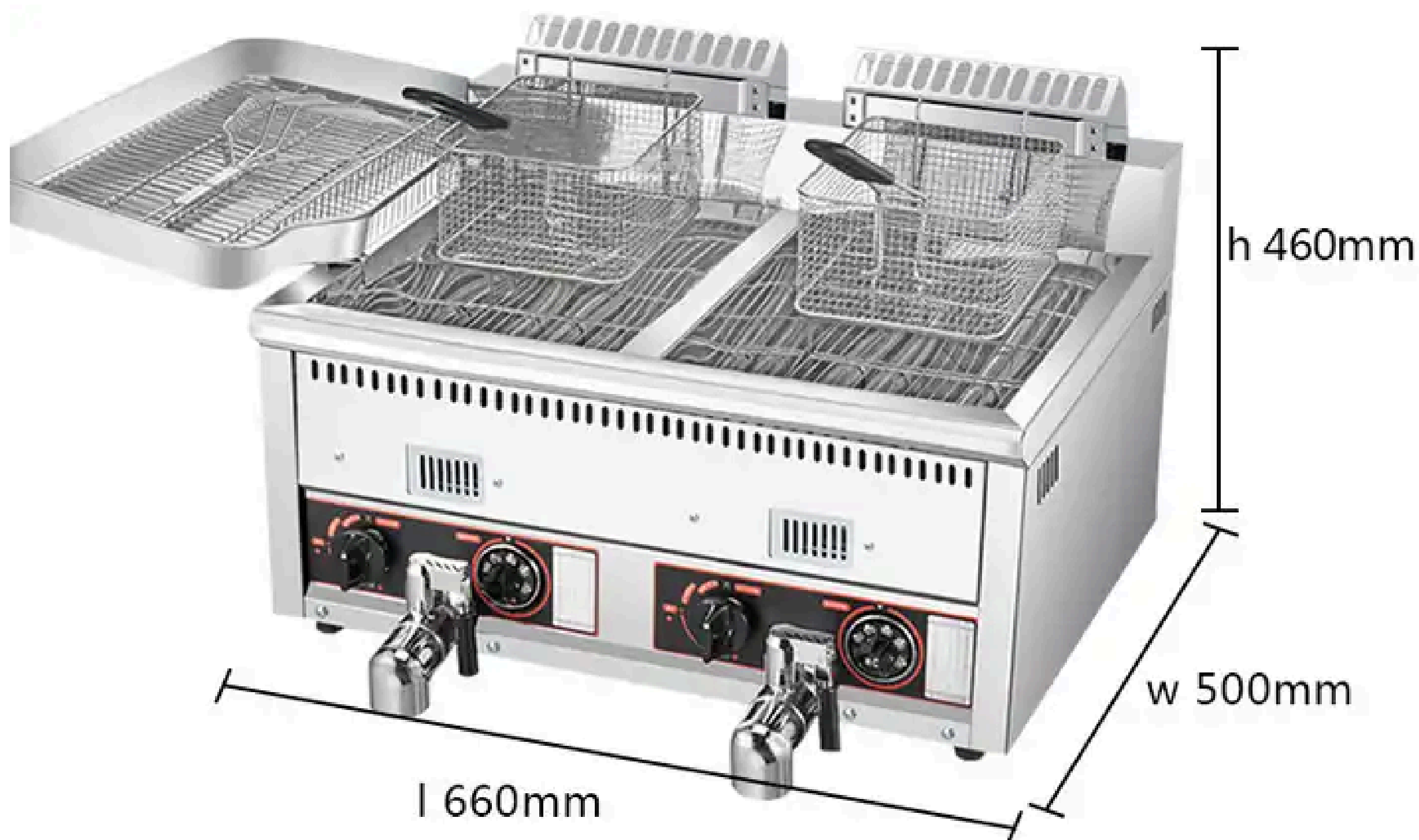
ITEM CODE : 179000

RESTAURANTS - HOTELS - CAFE - CATERING

DESCRIPTION OF PRODUCT

MODAL	AT-12LX2		
CAPACITY	12L + 12L		
TEMPERATURE RANGE	50-200 °C		
GAS TYPE	LPG GAS		
DIMENSION	WIDTH	LENGHT	HEIGHT
	500 MM	660 MM	460 MM

DIMENSION OF PRODUCT

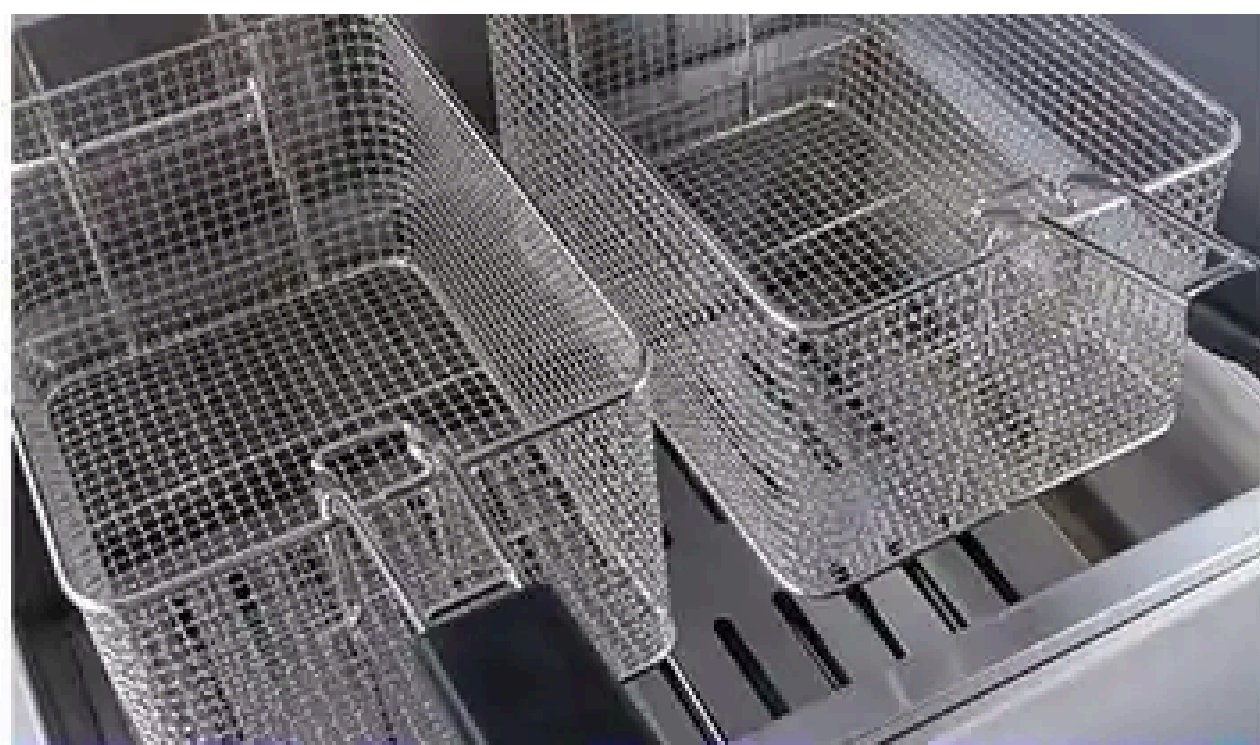


BEST FEATURES



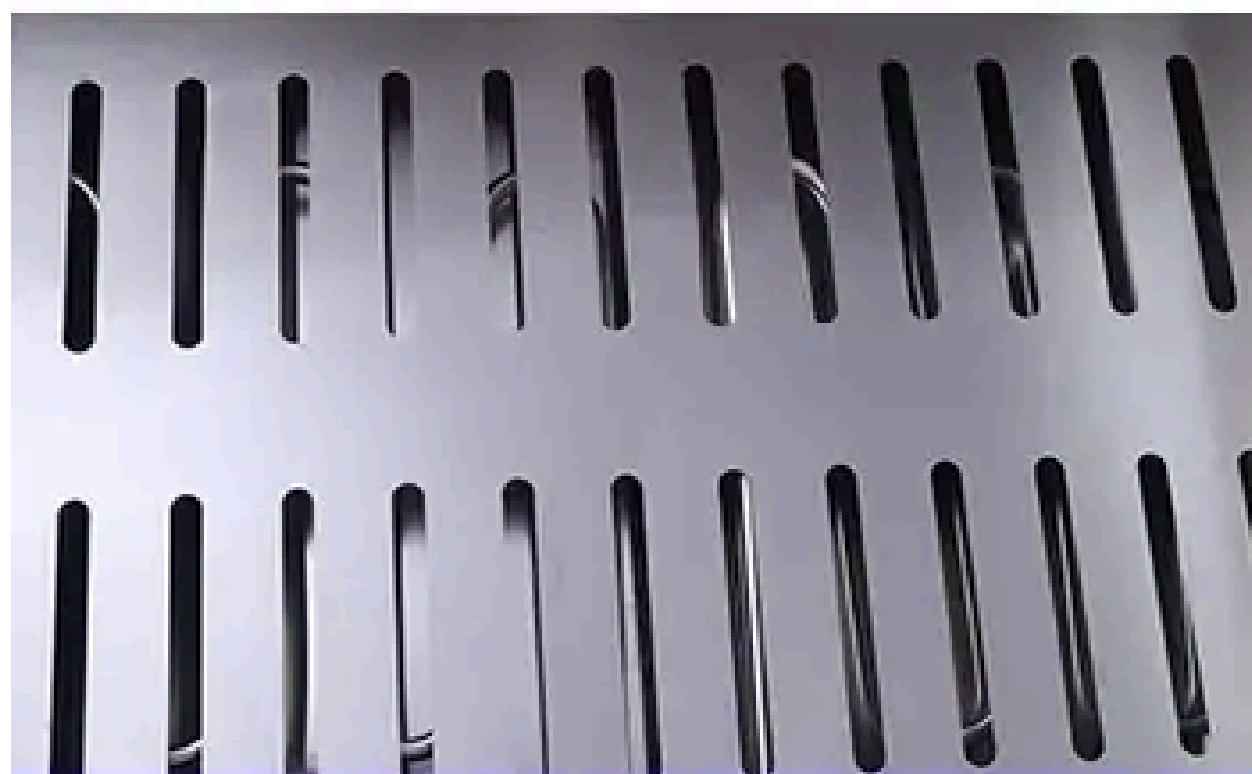
Drain valve pipe

Use food-specific stainless steel plus Big Pipe diameter
Not easy to block, large flow out, smooth oil



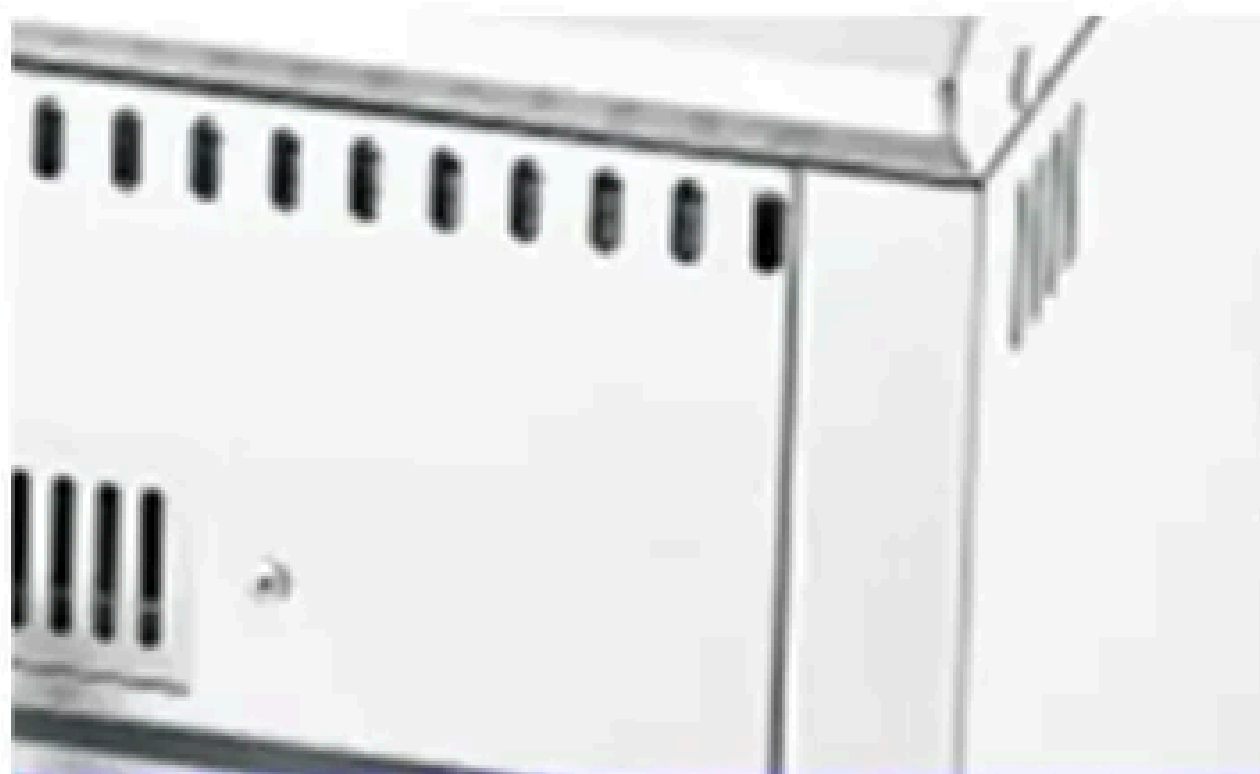
plus coarse stainless steel frying basket

Contact with hot oil for a long time too
Not easy to Discoloration Deformed
Sturdy and useful, not rusty



Isolation net

Oil residue separation Easy to clean
Easier to meet business needs



Thickened stainless steel

The body is all made of 201 thick stainless steel
Strong and durable, not easy to rust

Electronic ignition, automatic constant temperature

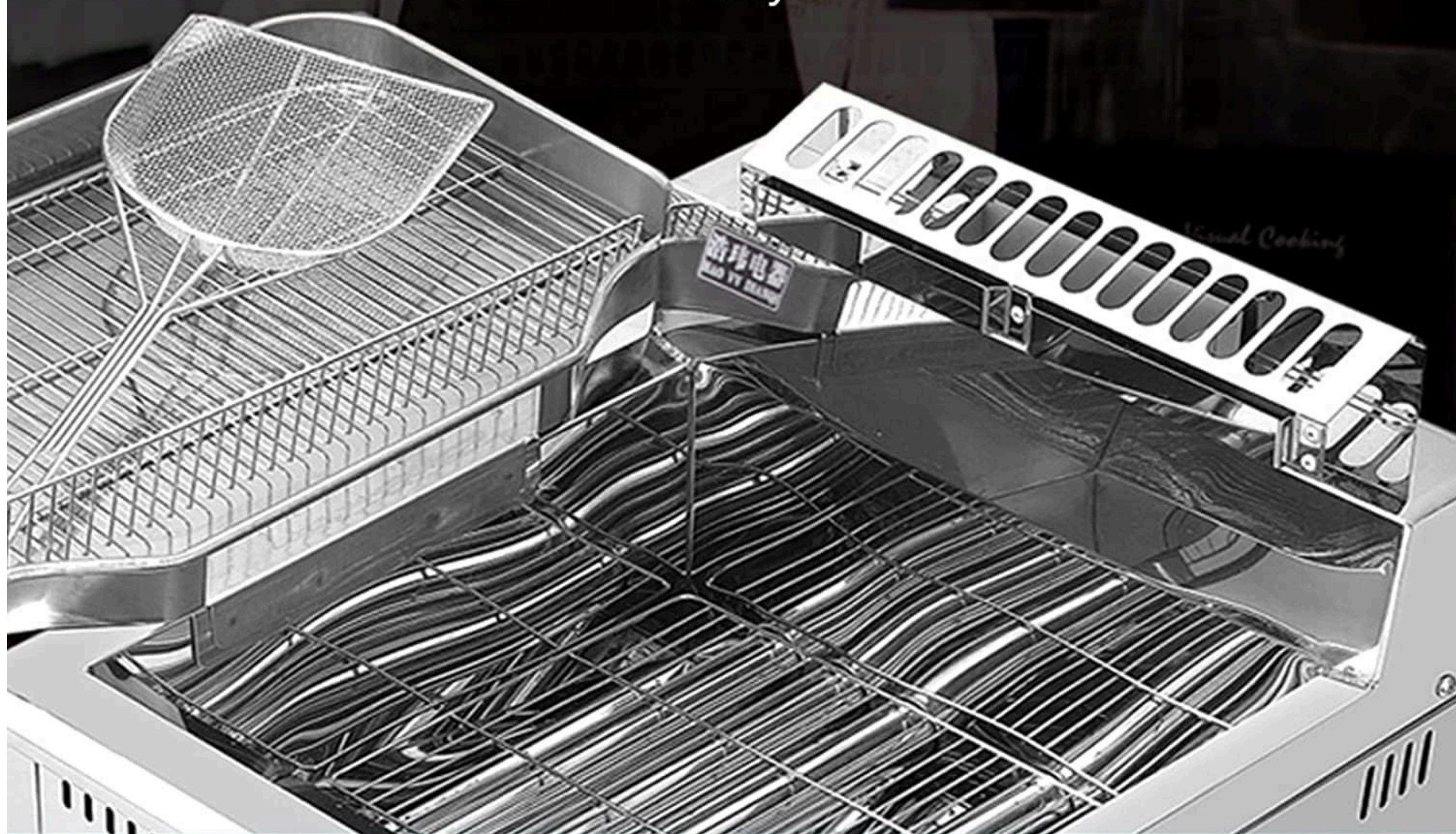


Easy to operate the ignition device

Temperature control switch
160-220 degrees temperature range can be adjusted freely

BEST FEATURES

Too much passenger flow is too slow?
Don't worry about the large capacity for you to deal with
easily



15 chicken chops



10 servings of fries

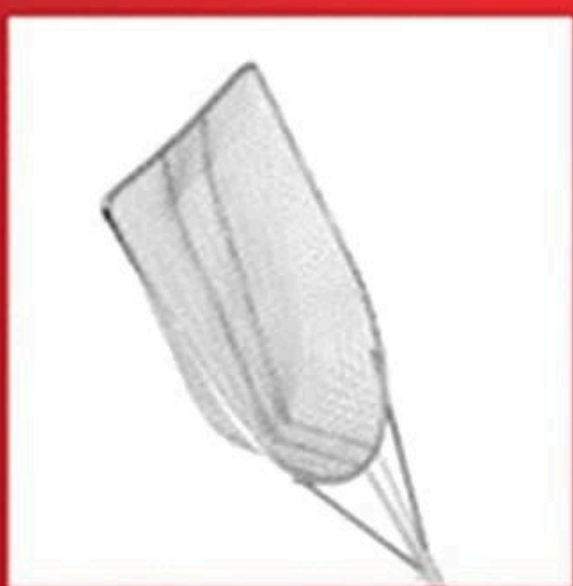


4 chickens



50 shrimps

The oil return pan drives away the greasy
feeling, saving energy and fuel



High quality stainless
steel fishing net



BEST FEATURES

Large-caliber oil drain valve easily solves the inconvenience of oil drain



The fryer is always not clean?
Stainless steel material is ready to be washed

— —
*HOW HARD IS IT TO START A BUSINESS AS A BOSS?
A STOVE IN THE HAND BLEW UP ALL OVER THE PLACE.*



Website

[click here](#)

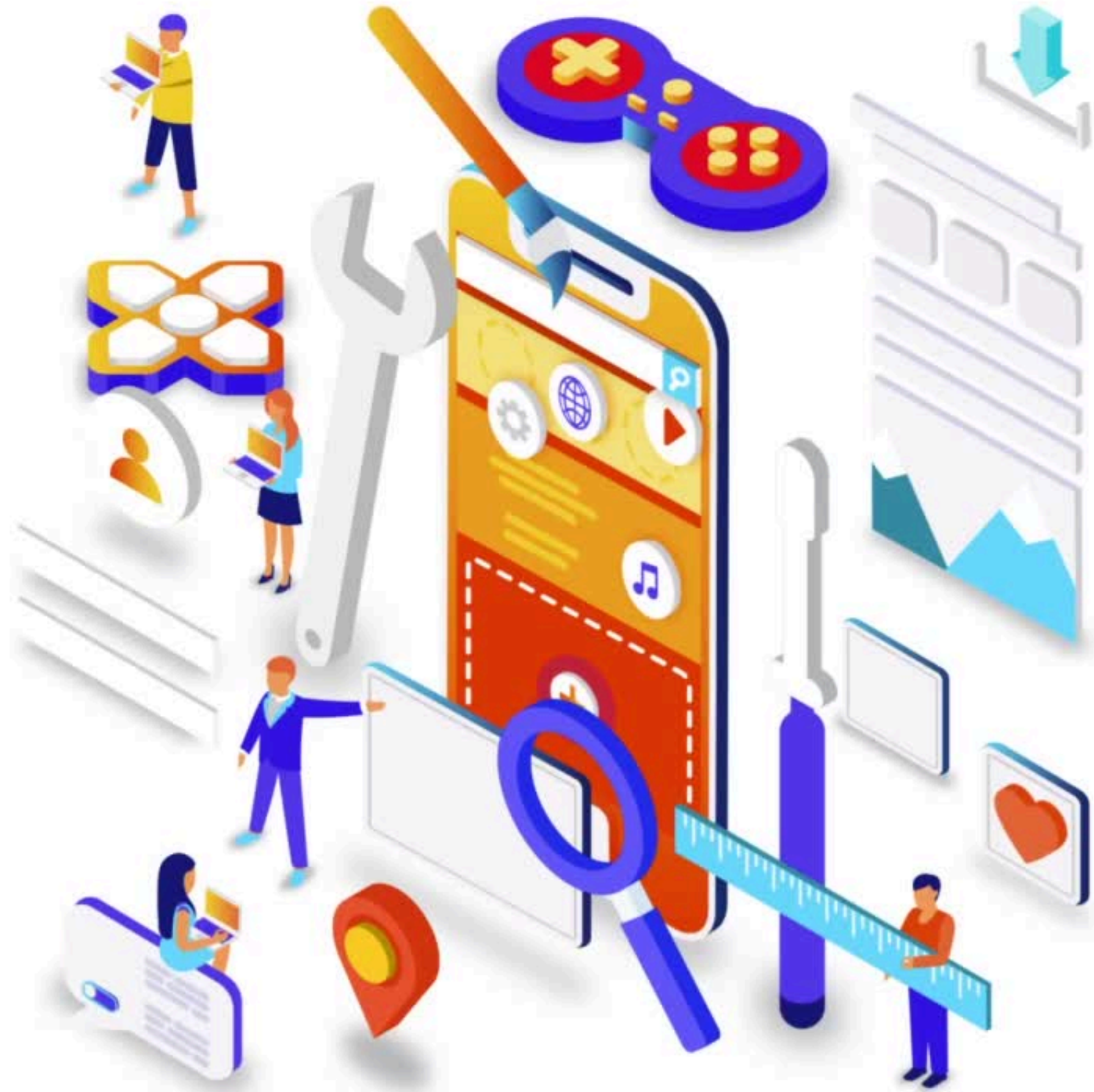


Connect with us

on Youtube.

Click below

[HORECA HUB OFFICIAL](#)



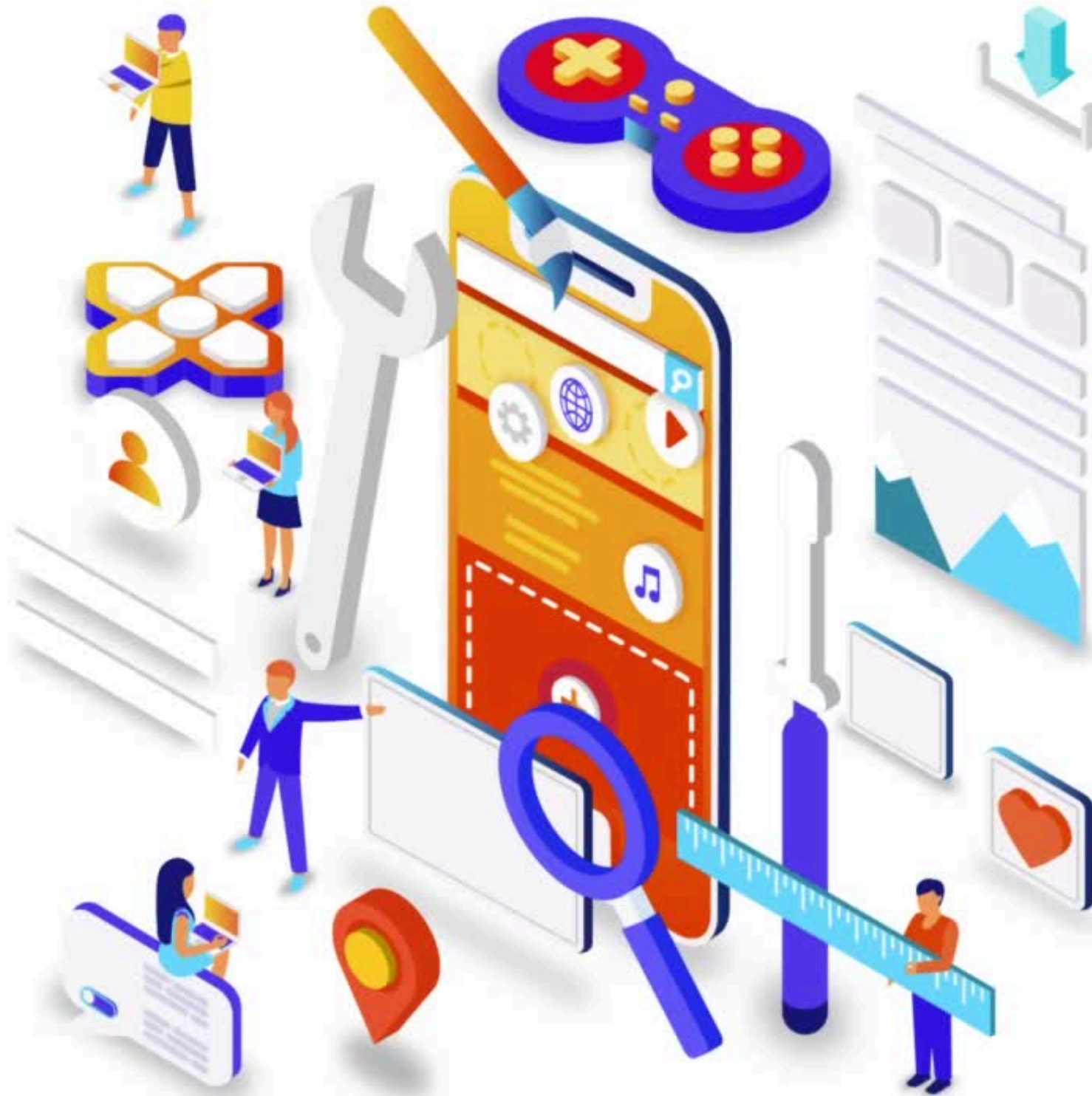
Connect with us

on Facebook.

Click below

[HORECA HUB INDUSTRI JAYA](#)

[HORECA HUB TAMAN SENTOSA](#)



Owned by

