



**DOUBLE STOVE
COFFEE WARMER**

CAFERINA

ITEM CODE : 111018

RESTAURANTS - HOTELS - CAFE

FUNCTION OF COMMERCIAL COFFEE WARMER

The coffee heater is equipped with a dual heating plate to provide a stable and efficient heating effect

- Left: Heating and insulation
- Right: Insulation

Ideally used for company pantry rooms, break rooms, cafe, dessert shop and any other commercial applications.

BEST FEATURES



STAINLESS STEEL BODY: The thin stainless steel body is beautiful and durable.

CONVENIENT & EASY TO OPERATE: Insulated switch, independent switch, one key operation.

NON STICK HEAT PRESERVATION DISC WIPE AND CLEAN: Use more comfortable and easy to keep clean.



RUBBER ANTI SLIP FOOT SLIP FOOT: Rubber sole pad, anti slip Stainless steel body is not in direct contact with the desktop. The bottom screw is fixed more firmly and durable.



DURABLE & STABLE: Thickened wiring port.

DETAILS



EFFICIENT COFFEE WARMER: 65-80°C. The commercial doubledecanter warmer is able to efficiently keep a full pot of coffee warm in hours. Whether it is hot coffee or hot tea, it is able to quickly reach the desired temperature, providing customers with a better tasting experience.

STAINLESS STEEL PORTABLE DESIGN:

The caferminy pot coffee warmer is made of stainless steel, this two position coffee heater is durable and easy to clean. At the same time, doublewarmer plate also is easy to carry and move, suitable for coffee shops, lounges, buffets and various commercial use.

SAFE AND RELIABLE: Commercial coffee heaters have multiple safety protection measures, such as temperature control devices and anti overheating functions, to ensure safety during use. Whether in a conference room, an exhibition or a hotel lobby, it is able to provide hot drinks for customers and participants to meet the needs of different venues.

EASY OPERATION: A simple toggle switch for each independently controlled warmer illuminates while switching on, allows easily control for individually operation. Designed for any standard decanters to keep your coffee hot without sticking to the bottom of decanter.



DESCRIPTION OF PRODUCT

ITEM TYPE	TWO POSITION COFFEE WARMER		
WEIGHT	1709G/60.28OZ		
POWER	60-480W		
COFFEE STOVE HEATING SURFACE DIAMETER	11CM/4.33IN		
HEATING TEMPERATURE	65-80°C (PLUS OR MINUS 5°C)		
MATERIAL	STAINLESS STEEL AND ALUMINIUM ALLOY		
MEASUREMENT	H 6CM	L 20.5CM	W 28CM
PACKAGE SIZE	H 7CM	L 22CM	W 30CM
WEIGHT	1.65 KG		

DIMENSION OF PRODUCT



Energy saving thermal insulation
 Double warm coffee stove
 Can be heated to 100°C





WIDE RANGE OF APPLICATION



KTV box



Western restaurant



Milk tea shop



Cafeteria

Website

[click here](#)

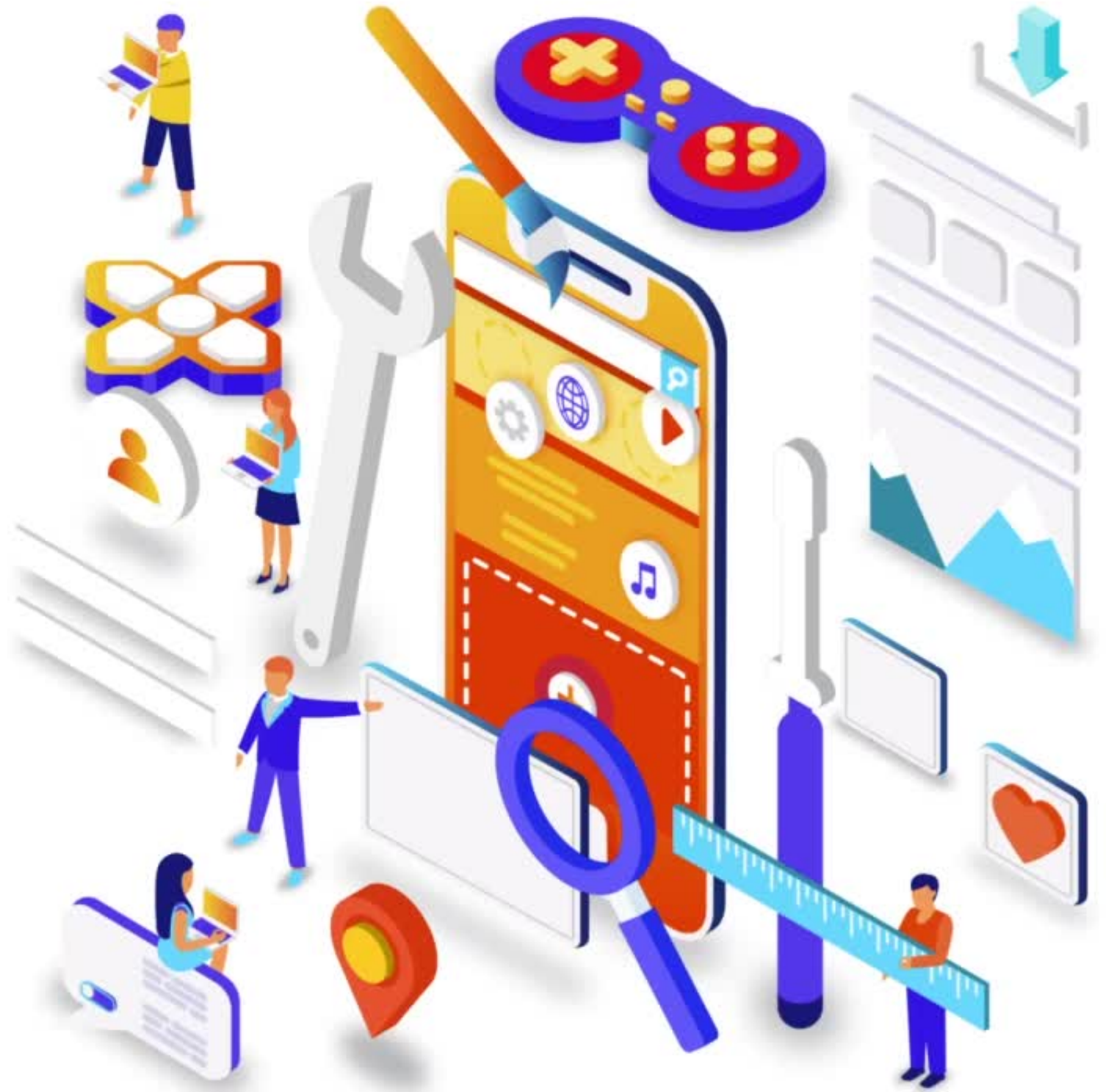


Connect with us

on Youtube.

Click below

[HORECA HUB OFFICIAL](#)



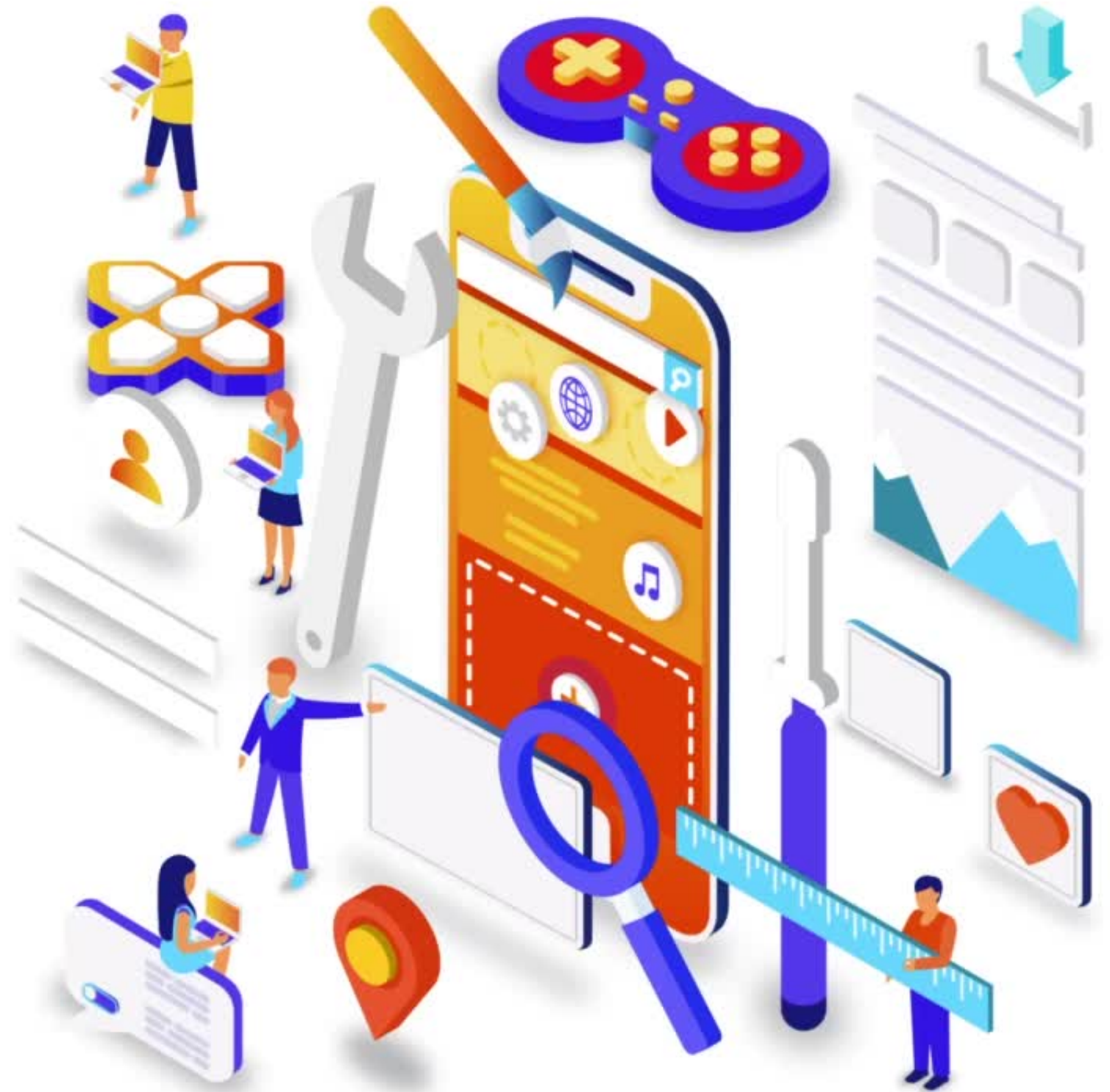
Connect with us

on Facebook.

Click below

[HORECA HUB INDUSTRI JAYA](#)

[HORECA HUB TAMAN SENTOSA](#)

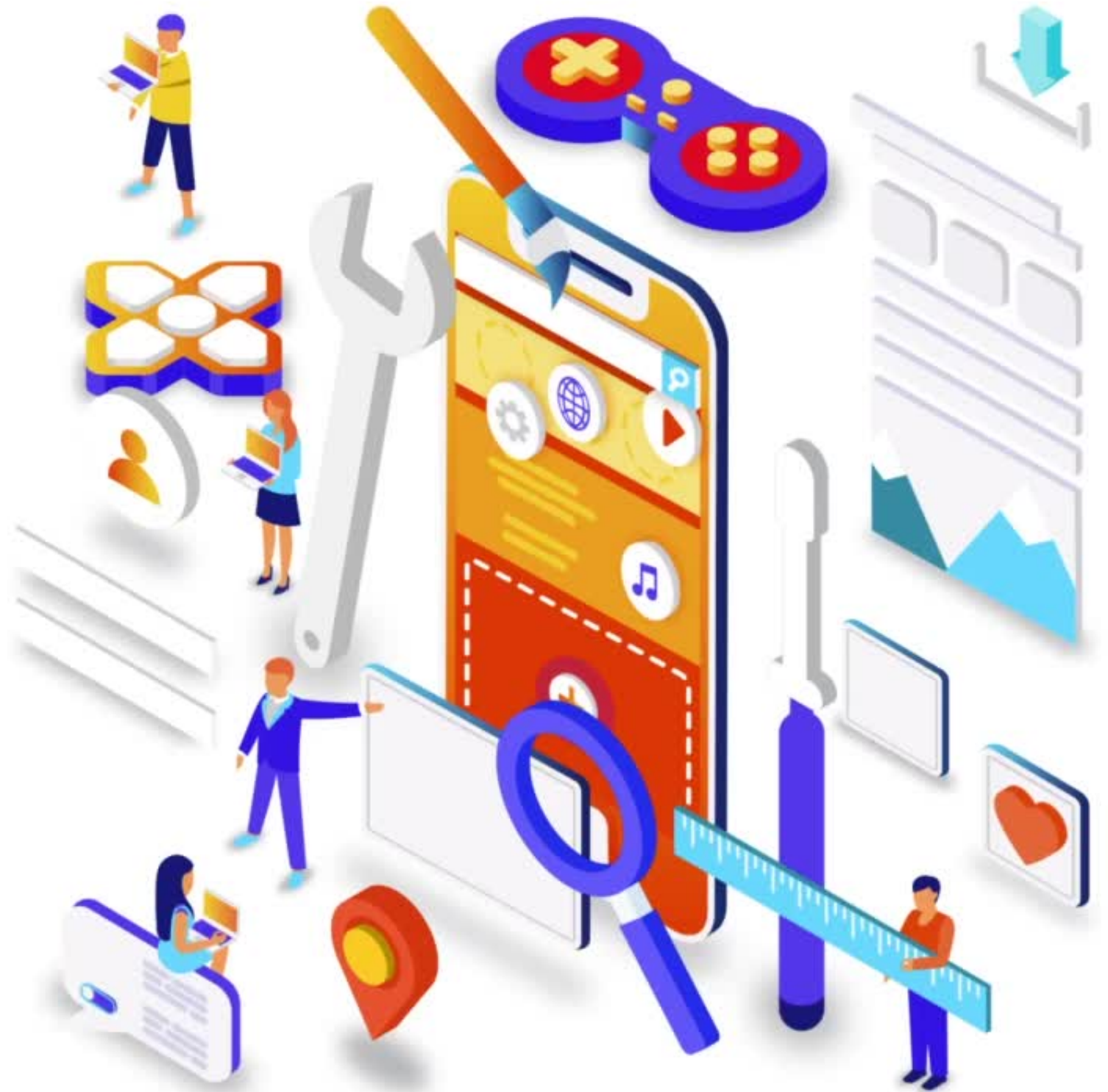


Connect with us
on Tiktok.

Click below

[HORECA HUB INDUSTRI JAYA](#)

[HORECA HUB TAMAN SENTOSA](#)



Owned by

