



MEGA DC

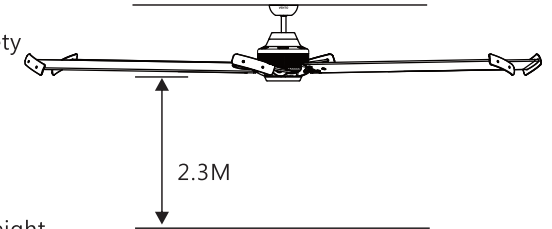
Assembly and installation manual of ceiling fan



Attention

Please read all the manual and warranty card thoroughly before installation.
(according to the voltage specification on each product)

1. Installation must be carried out by a qualified electrician.
2. Turn off the electrical mains at the circuit breaker/fuse box.
3. Do not use power supply other than 220V-240V/50Hz-60Hz.
4. This appliance must be earthed.
5. When mounting the fan, ensure that the safety wire is looped across the mounting bracket.
6. The mounting bracket must be able to withhold a min. weight of 35 pounds and fixed on the ceiling and pull it right after installation.
7. The ceiling fan must be mounted at a min. height of 7.5 feet / 2.3m of clearance from the floor.
8. Do not place any objects in the path of the blades. While the fan is running, there should not be anything crashing fan blades to prevent any dangerous situation.
9. When all electrical connections are done, store all wires neatly.
10. Make sure that all screws and connections are tightly screwed and secured.
11. Please replace a complete set instead of part of it while the product lifespan is due.
12. Please prevent too much moisture on the position where you would like to install ceiling fan.
13. Don't mix the blades together when you purchase more than one set.
14. Fan must be turned off and stopped before reversing fan direction.
15. Please install the cords following the order of ground cord, fire cord and neutral cord.
16. There must be at least 60cm distance between fan blade and wall.
17. There must be at least 300 cm gap between two ceiling fans.
18. Do not place ceiling fan underneath the lighting, that will cause shaking shade.



Index

Important safety instructions	01
Accessory	02
Installation guide	03~07
Remote control operation instruction	08
First time setting of R/C	09
Trouble shooting	10

Warning

This product is designed to use only those parts supplied with this product and/or accessories designated specifically for using with this product. Using parts and/or accessories not designated for using with this product could result in personal injury or property damage. If the supply cord is damaged, it must be replaced by the manufacturer, its service agent or similarly qualified persons in order to avoid a hazard.

The appliance must be fitted with means for disconnection from the supply mains having a contact separation in all poles that provide full disconnection under overvoltage category III conditions, and these means must be incorporated in the fixed wiring in accordance with the wiring rules.

Note

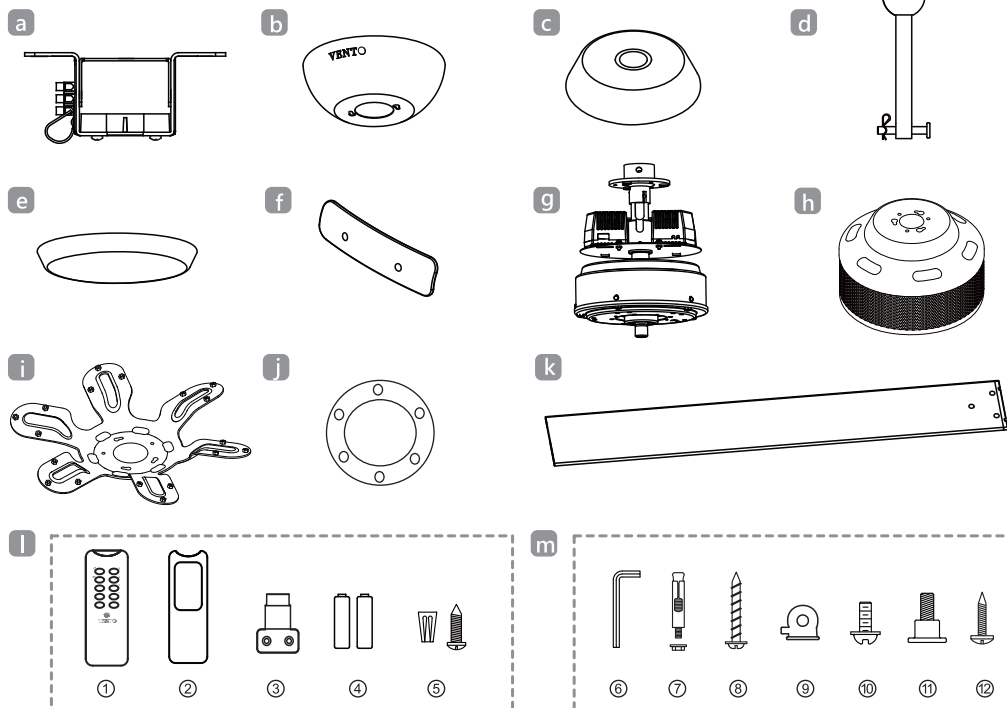
This illustrations in this manual are for explanation purposes only and may differ from the actual unit. It is subjected to change without prior notice for further improvements.

Tools:

- A. Philips screwdriver
- B. Slotted screwdriver
- C. Adjustable wrench
- D. Cutter
- E. Ladder
- F. Install the power cord in accordance with the cord

Check if all parts and accessories are present:

- a. Mounting bracket
- b. Canopy
- c. Upper decoration cap
- d. Downrod set
- e. Cover
- f. Tips x 6
- g. Fan body
- h. Motor cover
- i. Blade bracket
- j. Washer
- k. Blades x 6

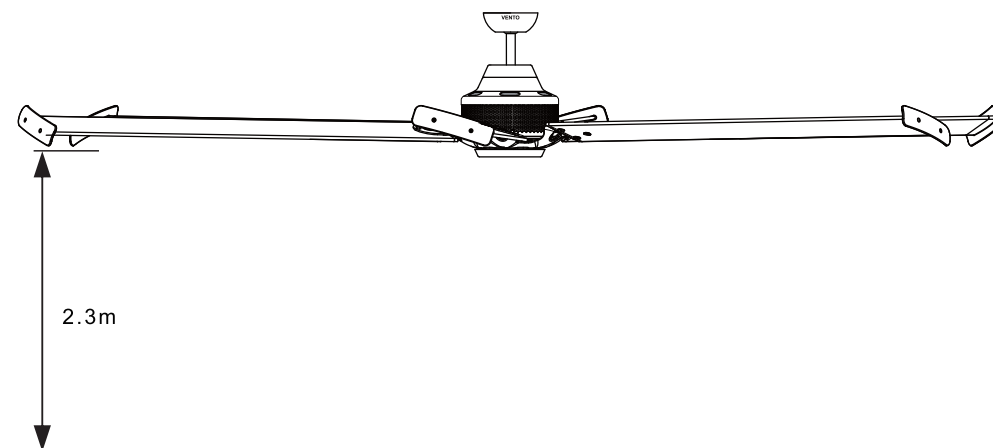


Note: The transmitter is designed for use with either wall bracket for transmitter (③) or the transmitter cover (②).

Note: Place the parts from (m.) shown above, in a small container to prevent parts from getting lost. If any parts are missing, contact your local retailer for replacement before proceeding.

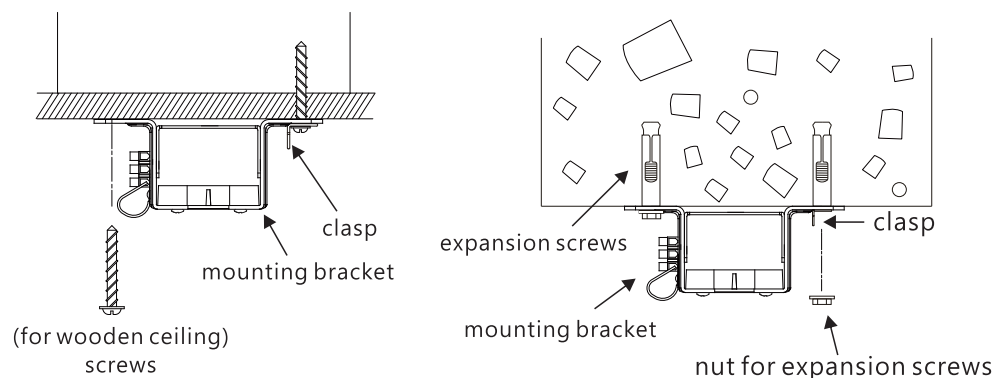
Attention: Do not install the fan onto the partition ceiling or chapped wall.

- A The ceiling fan must be mounted at a min. height of 7.5ft/2.3m of clearance from the floor.

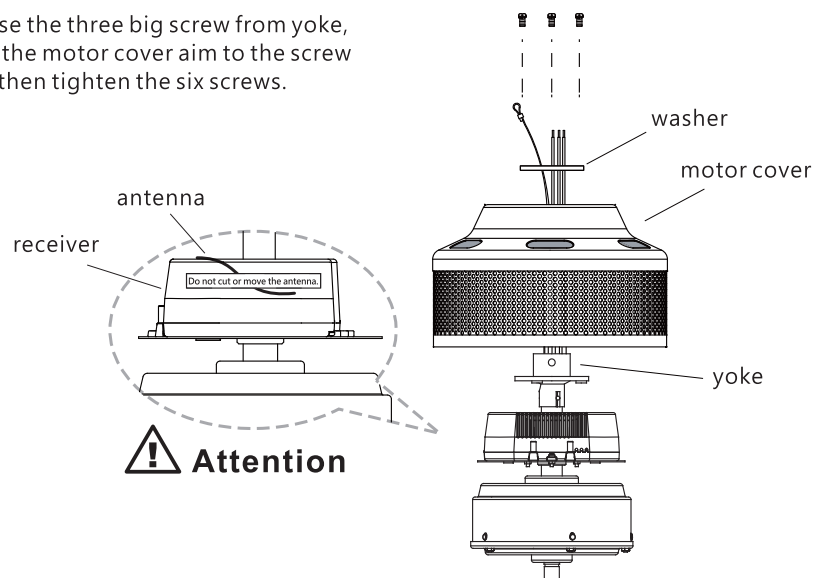


- B The mounting bracket must be securely fastened to a structural ceiling member.

NOTE: a.) Please choose one of the following ways to install the mounting bracket.
b.) Make sure all screws are tightened.

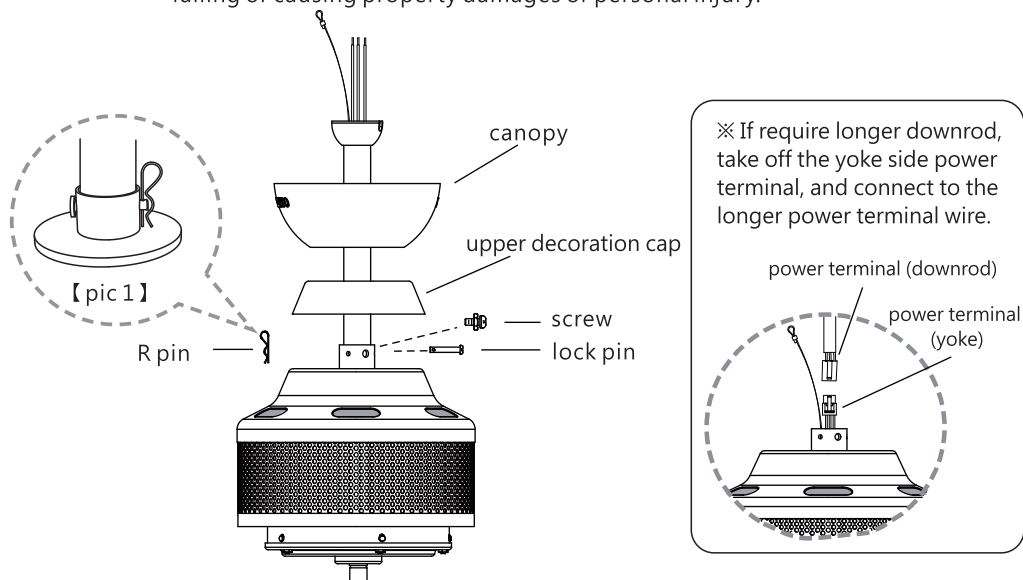


- C** Release the three big screw from yoke, place the motor cover aim to the screw hole, then tighten the six screws.

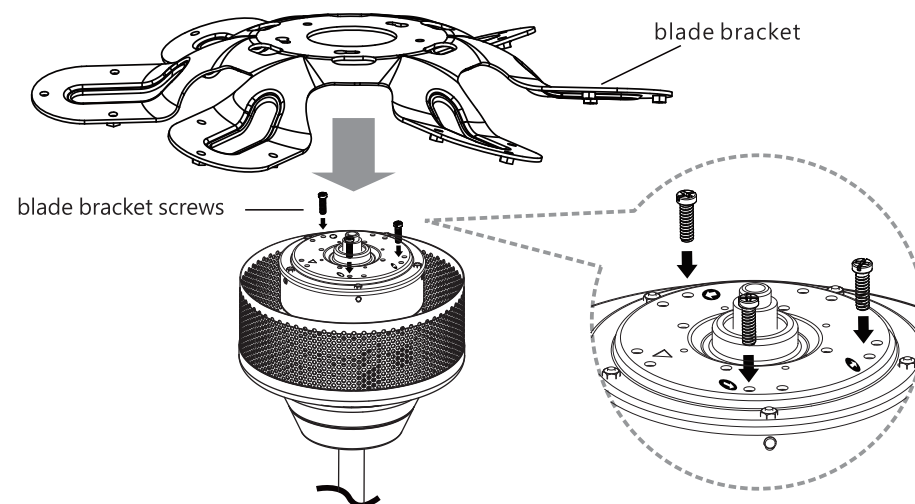


- D** Loosen 2 screws at the yoke of the motor assembly. Slide the canopy into the downrod. Thread the power leads from the fan through the canopy, decorative cover and downrod (take extra care not to pull power wires damage). Set downrod into yoke and rotate until the holes match. Then, insert lock pin through the holes and firm it with R pin. Tighten 2 screws and nuts at the top yoke of the motor assembly.

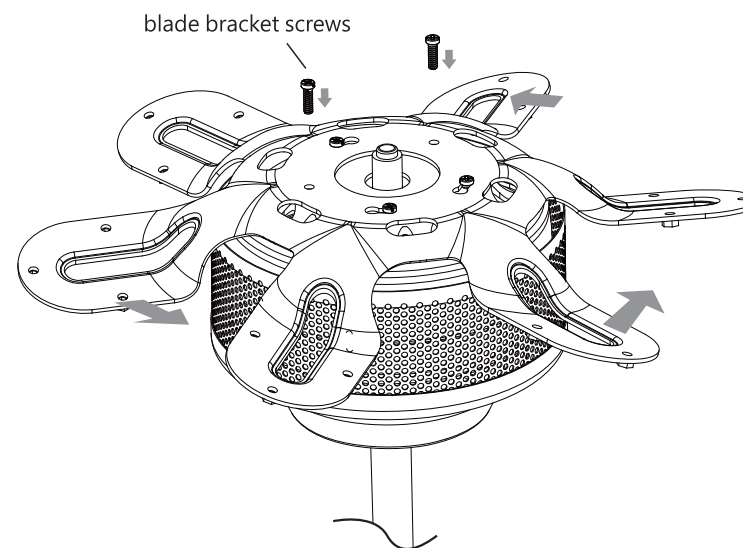
Attention: Make sure the R pin and lock pin is proper and secure to prevent the fan from falling or causing property damages or personal injury.



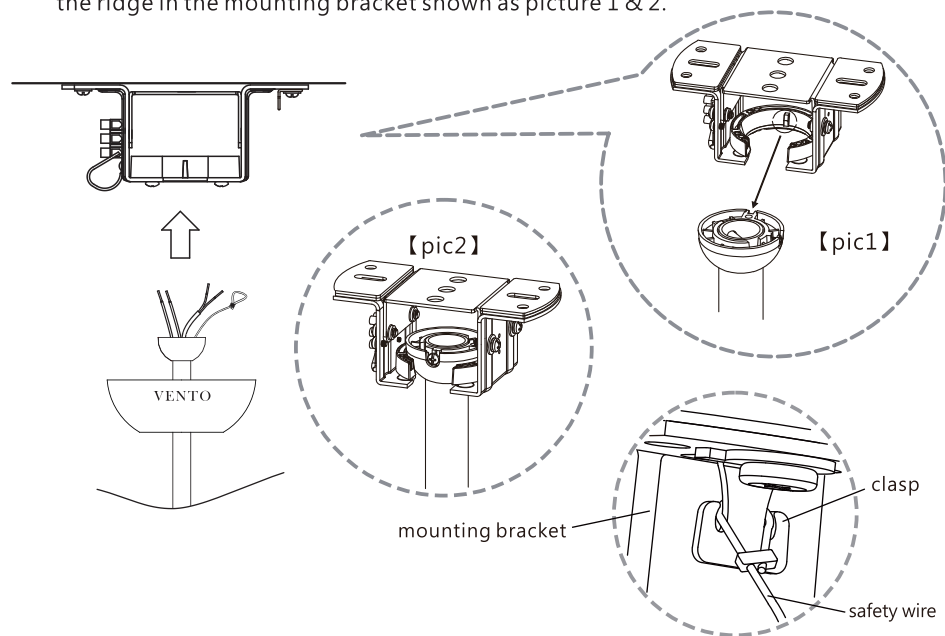
- E** Follow the three arrow sticker to fix the three screws (no need to tighten), then take blade bracket aim to the three screws, and put down the blade bracket.



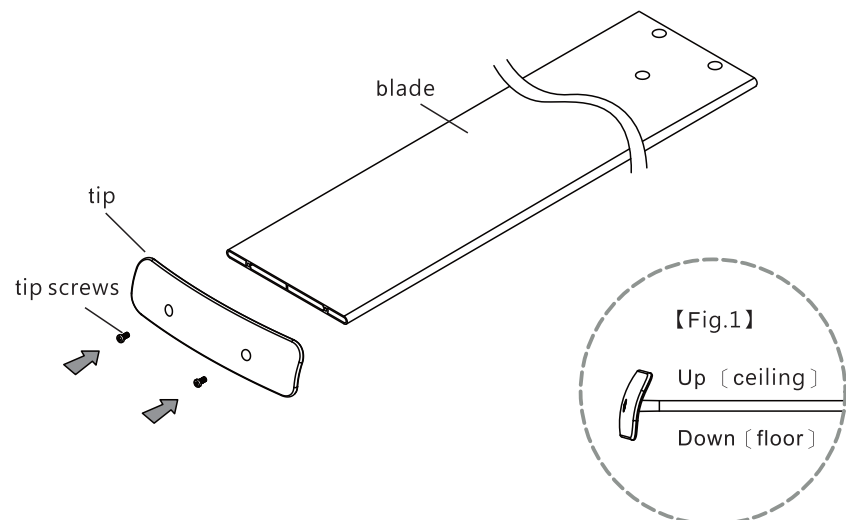
- F** After put down the blade bracket, anticlockwise the blade bracket located at the small key hole, tighten the two blade bracket screws, then fix the three screws.



- G** a.) When mounting the fan, ensure that the safety wire is looped across the mounting bracket.
 b.) Confirm all the parts are tightened. Rotate fan so that the notch on the ball engages the ridge in the mounting bracket shown as picture 1 & 2.

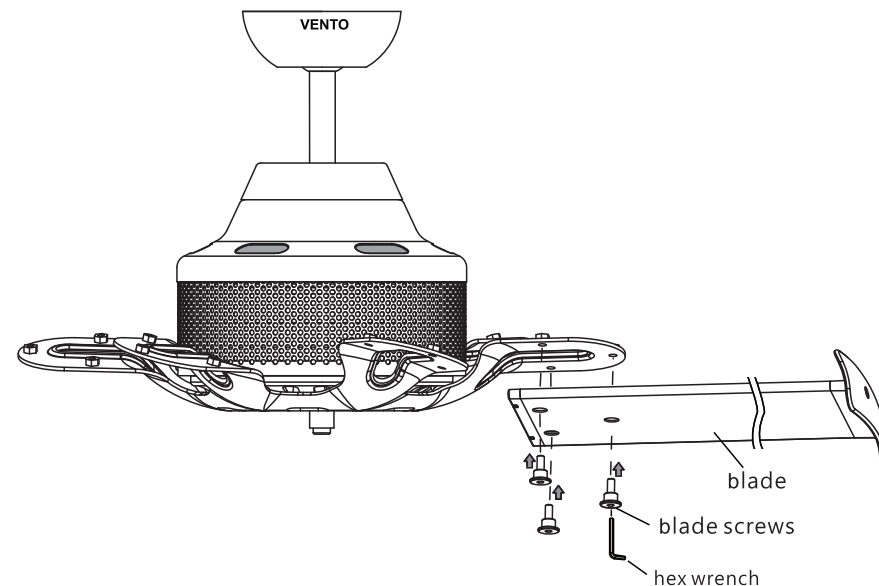


- H** Fix the tips at the end of blades and tighten by two screws, please be careful the direction of the tips, shown in Fig.1.

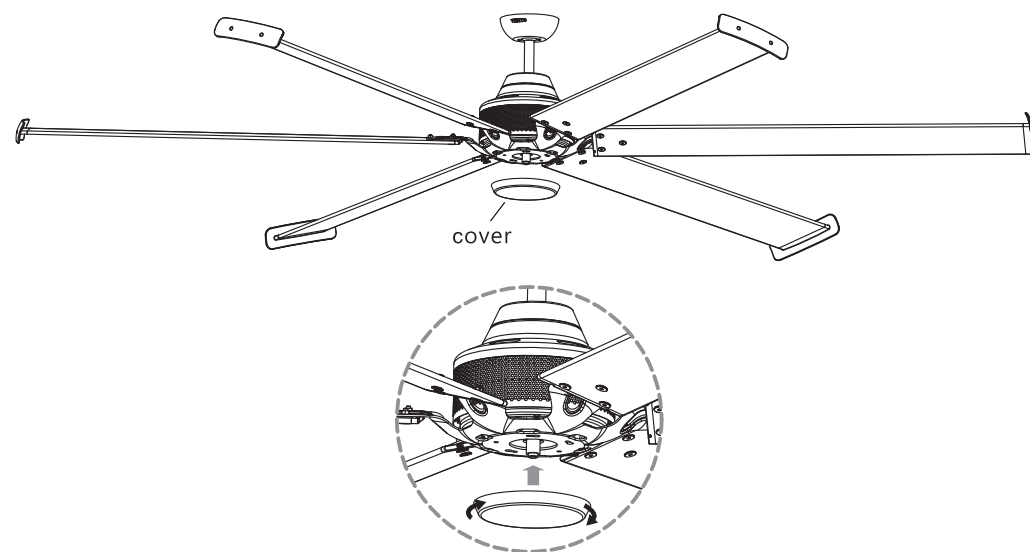


※ If installed correctly the upside tip lean to the motor.

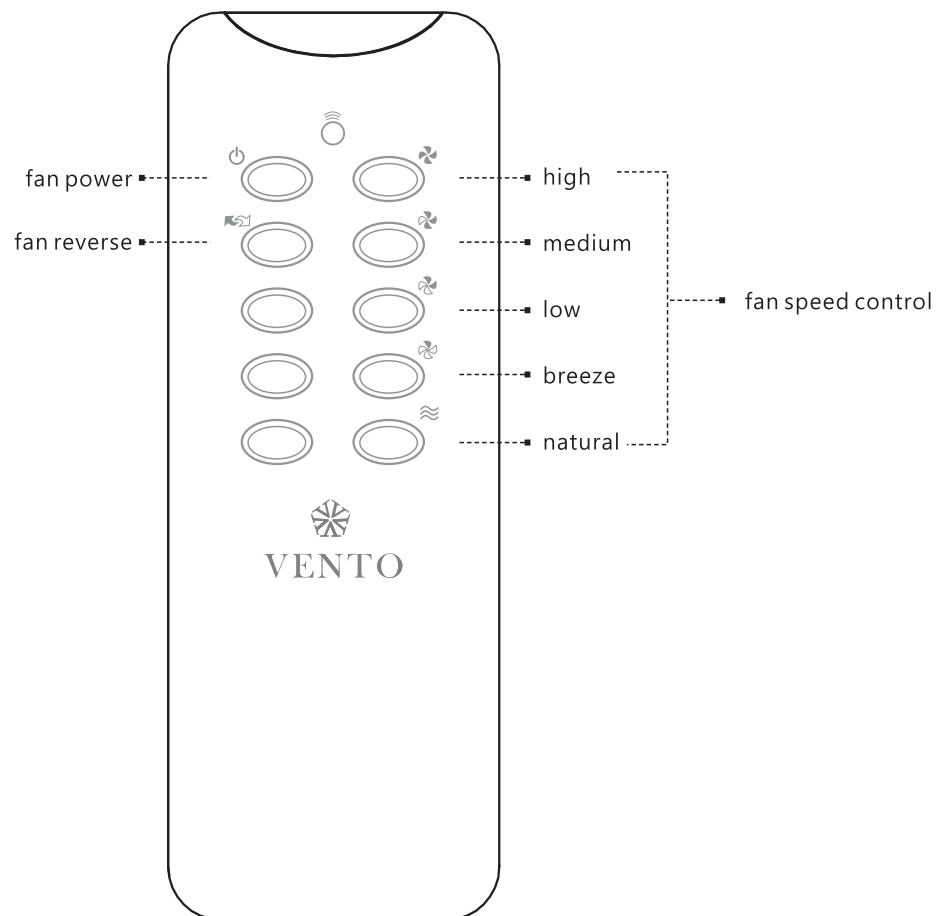
- I** Put blade below the blade bracket, fix three blade screws by hex wrench, rest blades are same.



- J** Rotate the cover at the bottom of the fan.

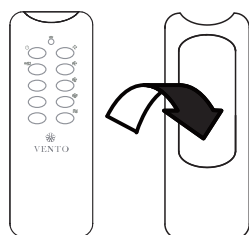


Remote control panel introduction.

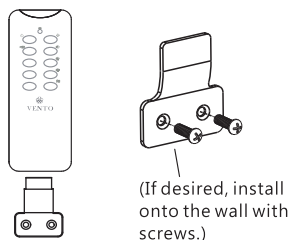


NOTE: The transmitter can be use with either wall bracket or the transmitter cover.

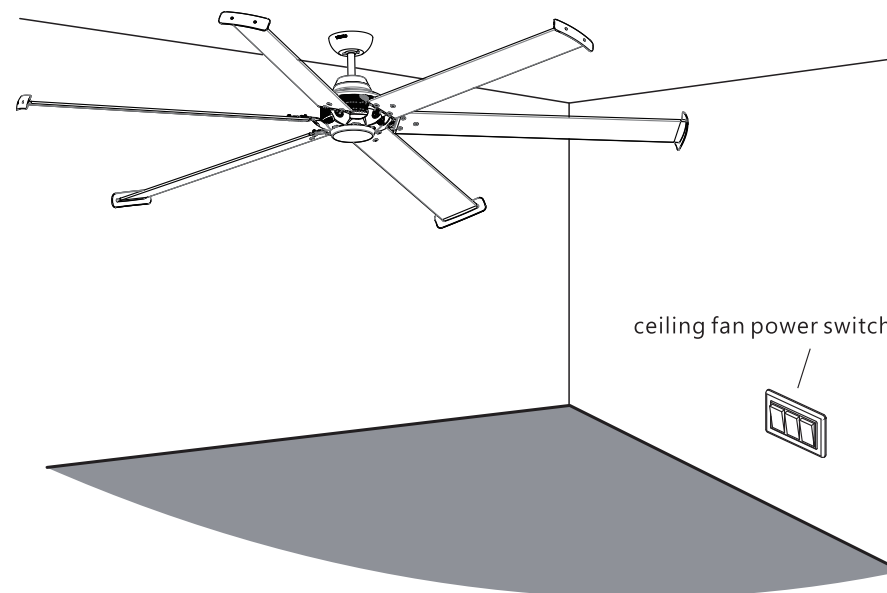
● Insert transmitter to the cover from this hole.



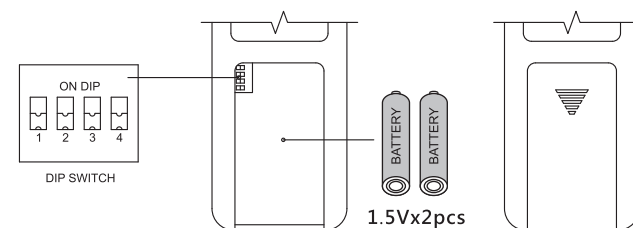
● Transmitter holder.



1. When you use it for the first time, please press " Natural" button as basic setting.
 2. Press" Natural" continuously , and turn on" fan power", you will hear a "beep" sound which means the setting is accomplished.
- ※ If there is any poor signal condition, please repeat above steps or replace batteries.



3. If there are two ceiling fans installed in the same space, please adjust the dip switch on the transmitter to make each fan controlled with different setting. Please follow step 1 and step 2 to do the setting after adjustment.



Problem A: Fan will not start

Remedies:

1. Check fuse or circuit breaker and replace if necessary.
2. Check that reversible switch is at exact position.
3. Turn off electrical power, check all wire connections.
4. Check to make sure the dip switches from the transmitter and receiver are set on the same frequency.

Problem B: Fan excessively noisy

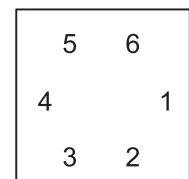
Remedies:

1. Check that all screws in fan assembly are tight and properly seated.
2. Check to make sure mounting bracket is installed properly.

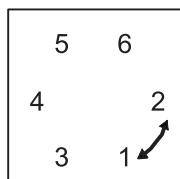
Problem C: Fan wobbles

Remedies:

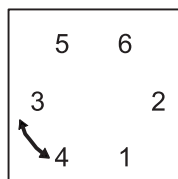
1. Check that all blades are screwed firmly into the fan body.
2. If the above mentioned remedies can't eliminate the wobble, use the clip from balance pack to make sure the position. Stick the balancing weight on the opposite side of the mark place.
3. If the above mentioned remedies can't eliminate the wobble, interchange the blade pair, proceeding as following illustrations until wobble is removed.



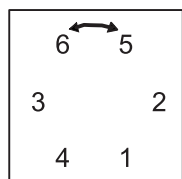
Numbered tape placement



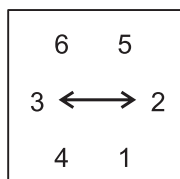
Switch 1-2



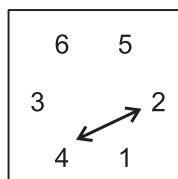
Switch 3-4



Switch 5-6



Switch 3-2



Switch 4-1




The energy conservation reduces the carbon is our responsibility

Warning

This appliance is not intended for use by persons (including children) with reduced physical, sensory or mental capabilities, or lack of experience and knowledge, unless they have been given supervision or instruction concerning use of the appliance by a person responsible for their safety. Children should be supervised to ensure that they do not play with the appliance.

This appliance can be used by children aged from 8 years and above and persons with reduced physical, sensory or mental capabilities or lack of experience and knowledge if they have been given supervision or instruction concerning use of the appliance in a safe way and understand the hazards involved. Children shall not play with the appliance. Cleaning and user maintenance shall not be made by children without supervision.

If unusual oscillating movement is observed, immediately stop using the ceiling fan and contact the manufacturer, its service agent or suitably qualified persons.

	Correct Disposal of this product
	This marking indicates that this product should not be disposed with other household. Wastes throughout the EU. To prevent possible harm to the environment or human health from uncontrolled waste disposal, recycle it responsibly to promote the sustainable reuse of material resources. To return your used device, please use the return and collection systems or contact the retailer where the product was purchased. They can take this product for environmental safe recycling.

NOTE: If you have lost the Owner’s Manual, please contact the local agent or visit <http://www.ventotw.com/EN/ENindex.html> or send email to service@ventotw.com for electronic version.

Maintenance:

- The maintenance cycle and method of maintenance; every four month clean the dust of fan surface by soft wet rag, with clean water only.
- The weight of the appliance in kilograms; Mega 72” 14.1kg, 84” 15.2kg, 100” 16.6kg
- That the replacement of parts of the safety suspension system device shall be performed by the manufacturer, its service agent or suitably qualified persons.
- The fixing means for attachment to the ceiling such as hooks or other devices shall be fixed with a sufficient strength to withstand 4 times the weight of the ceiling fan;
- That the mounting of the suspension system shall be performed by the manufacturer, its service agent or suitably qualified persons.