



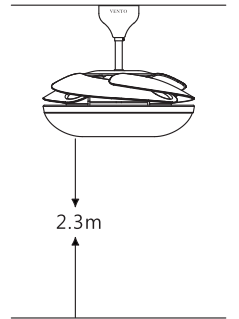
MELA

Assembly and installation manual of ceiling fan

Attention

Please read all the manual and warranty card thoroughly before installation.
(according to the voltage specification on each product)

1. Installation must be carried out by a qualified electrician.
2. Turn off the electrical mains at the circuit breaker/fuse box.
3. Do not use power supply other than 240V / 50Hz.
4. This appliance must be earthed.
5. When mounting the fan, ensure that the safety wire is looped across the mounting bracket.
6. The mounting bracket must be able to withhold a min. weight of 30 kgs.
7. The ceiling fan must be mounted at a min. height of 7.5 feet / 2.3m of clearance from the floor.
8. Do not place any objects in the path of the blades.
9. When all electrical connections are done, store all wires neatly.
10. Make sure that all screws and connections are tightly screwed and secured.



Index

Important safety instructions ⁰¹

Accessory ⁰²

Installation guide ^{03~05}

Remote control operation instruction ^{06~09}

Trouble shooting ¹⁰

Warning

This product is designed to use only those parts supplied with this product and/or accessories designated specifically for using with this product. Using parts and/or accessories not designated for using with this product could result in personal injury or property damage.

Note

This illustrations in this manual are for explanation purposes only and may differ from the actual unit. It is subjected to change without prior notice for further improvements.

Before installation, please check out all the accessories inside the cartons if there is no shortage, you may start it.

(For convenience, some screws are already attached to the main parts)

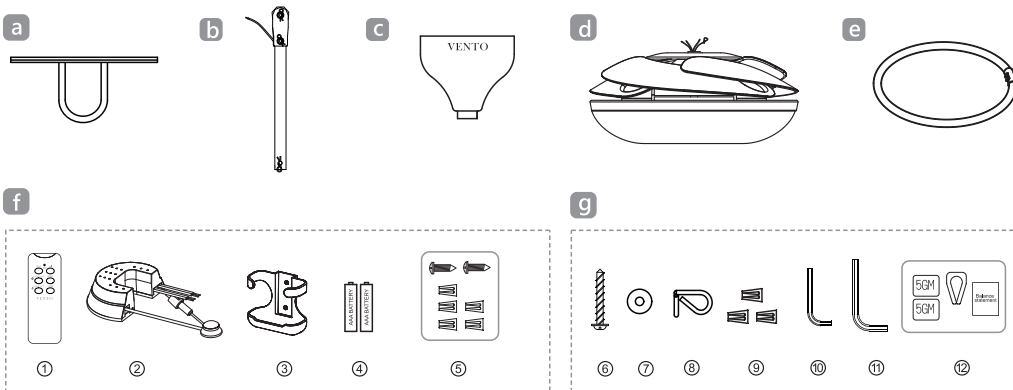
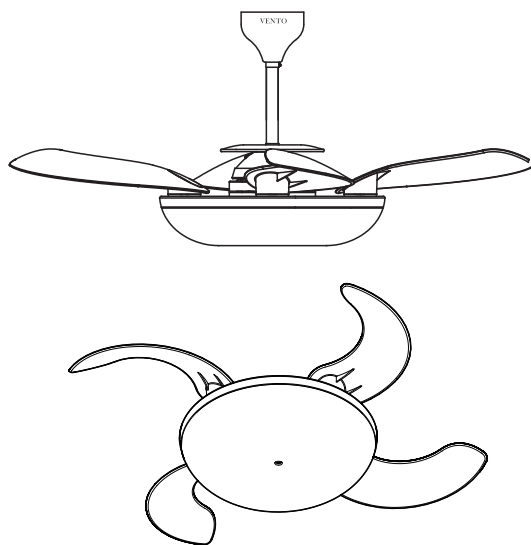
- a. Ceiling fan hook (optional)
- b. Downrod set
- c. Canopy
- d. Fan body
- e. T5 40W circular lamp
- f. Remote control
- g. Screw pack

Remote control

- ① Transmitter x 1
- ② Receiver x 1
- ③ Transmitter holder x 1
- ④ Battery x 2
- ⑤ Accessories packet x 1

Screw pack

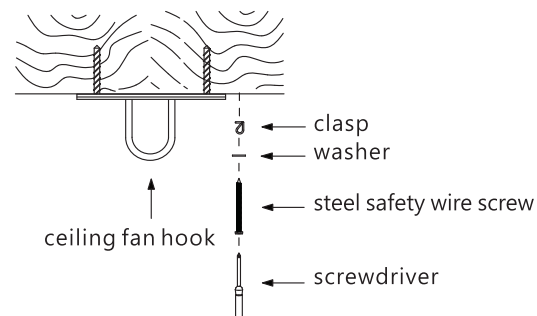
- ⑥ Screw for steel safety wire x 1
- ⑦ Washer for steel safety wire x 1
- ⑧ Clasp x 1
- ⑨ Wire connector x 3
- ⑩ 6mm hexagon key wrench x 1
- ⑪ 4mm hexagon key wrench x 1
- ⑫ Balancing kit x 1



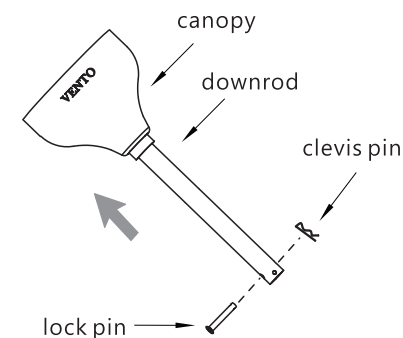
- A** Please fix the ceiling fan hook onto the ceiling and then the clasp through the screws and tighten the screws.

Caution :

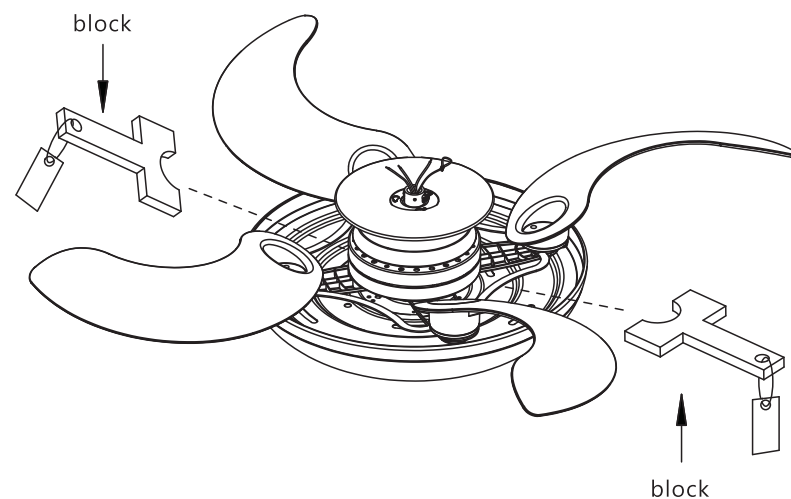
Steel safety wire screw must pass through the washer and clasp, finally tighten the steel safety wire screw beside the fan hook.



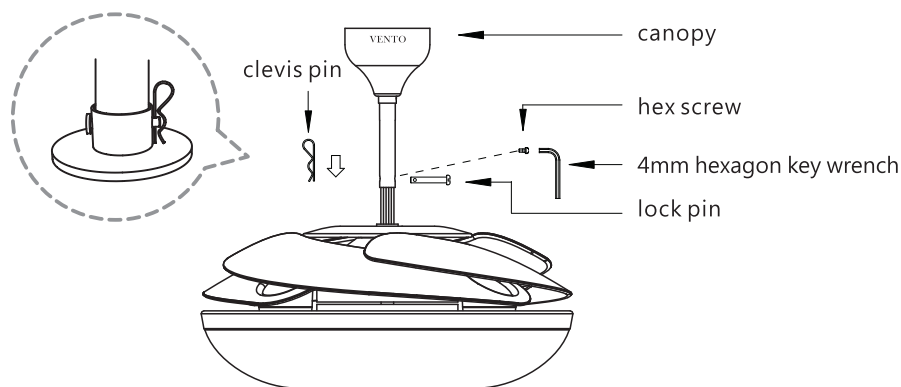
- B** Remove the lock pin and clevis pin on the downrod and assemble the canopy through the downrod.



- C** Before hanging the assembled fan to the ceiling fan hook, remove two blocks from the fan body. If not, the fan will not function properly.



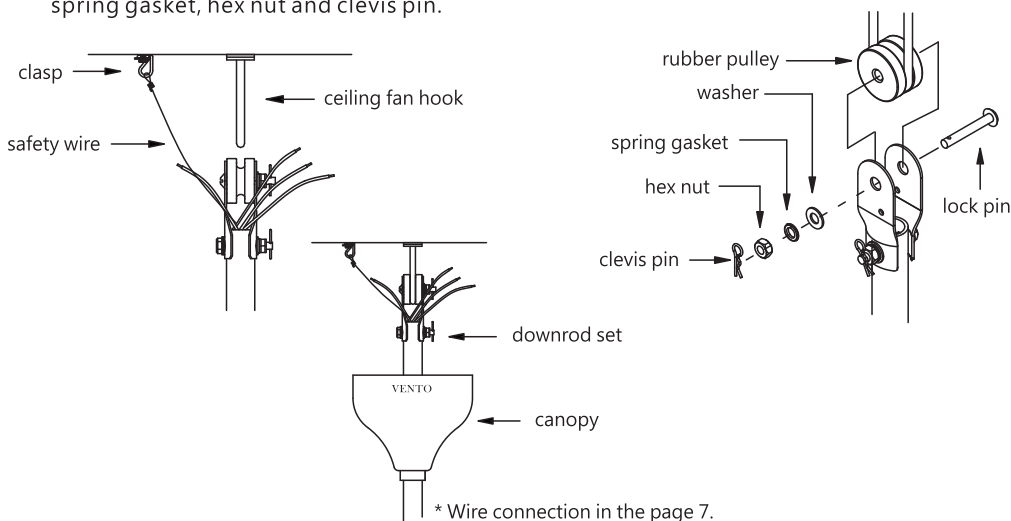
- D** Loosen 2 hex screws at the top coupling of the motor assembly. Put downrod through canopy, and coupling cover and thread wire from coupling through the downrod. Align holes in downrod and coupling. Insert the lock pin through the downrod and secure with clevis pin. Then tighten 2 hex screws with 4mm hexagon key wrench at the top coupling of the motor assembly.



E Important :

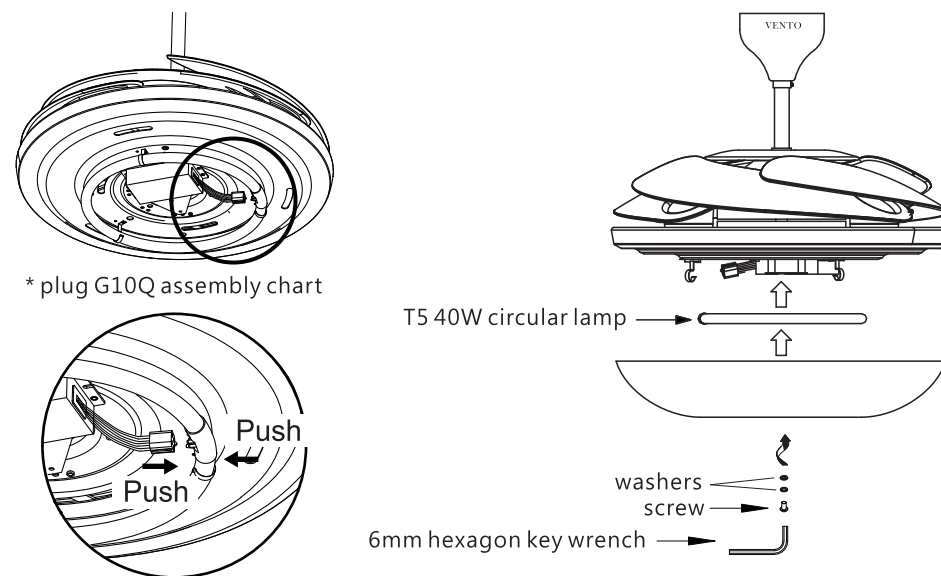
Make sure to put safety wire loop into the clasp opening before hanging the assembled fan to the ceiling fan hook.

Remove the clevis pin, hex nut, spring gasket, washer, rubber pulley and lock pin from the downrod. Place the rubber pulley onto the ceiling fan hook and fix the lock pin, washer, spring gasket, hex nut and clevis pin.



- F** Loosen the screw on lamp shade. Install T5 circular lamp into the spring clips, then push lamp holder into the T5 circular lamp socket. Align holes on lamp shade to the fan body. Finally tighten washers and screw with 6 mm hexagon key wire.

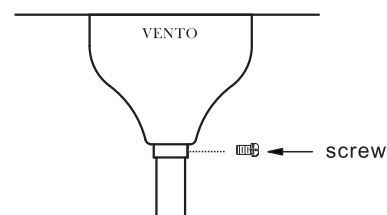
NOTE : Bulb specification is T5 circular lamp bulb, G10Q 40W.



- G** Push up the canopy till it reaches the ceiling then screw it tightly.

Important :

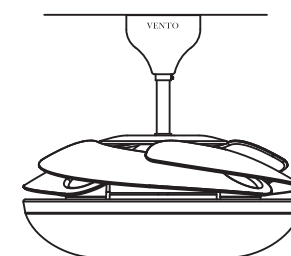
Assemble blades before the ceiling fan is mounted onto the ceiling fan hook.



- H** The diagram is a sample outlook of the properly installed Mela fan.

Swaying solution :

If the fan sways, switch off the fan. Then clip the plastic clip (Ⓢ) onto the center of any blades, switch on the fan. Repeat the same action till the fan stops swaying, Then stick the balancing metal onto the blade where the plastic clip is, then remove the clip.



A. Important points :

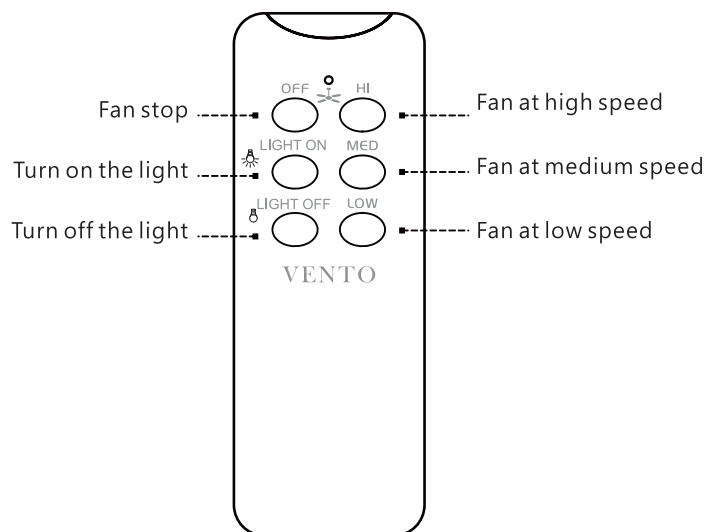
1. Please read this manual and keep it for future use.
2. Turn off the electrical mains at the circuit breaker fuse box.
3. Please note that all wiring connections should be done by a qualified electrician.
4. This unit is to be used in a AC240V 50Hz supply zone only.
5. Do not install in damp locations or immerse in water. (For indoor use only.)
6. To avoid damaging the transmitter prevent dropping or banging the transmitter.
7. Do not attempt to shorten the receiver's antenna wire.
8. If the transmitter is not used for some time, please remove batteries to avoid leakage, that will damage the transmitter.

B. Operation instructions :

1. After installing the receiver, make sure the transmitter has its batteries installed.
2. If the transmitter is not functioning properly or not function or if the fan is not moving please do the followings :
 - a) Turn off the electrical mains at the circuit breaker fuse box.
 - b) Follow steps on page 7 to reinstall the receiver.

C. Functions of transmitter :

HI : Set fan to high speed.
 MED : Set fan to medium speed.
 LOW : Set fan to low speed.
 OFF : Turn off the ceiling fan.
 LIGHT ON : Turn on the light.
 LIGHT OFF : Turn off the light

Control panel operation

! Caution : Incorrect wire connection will damage this fan.

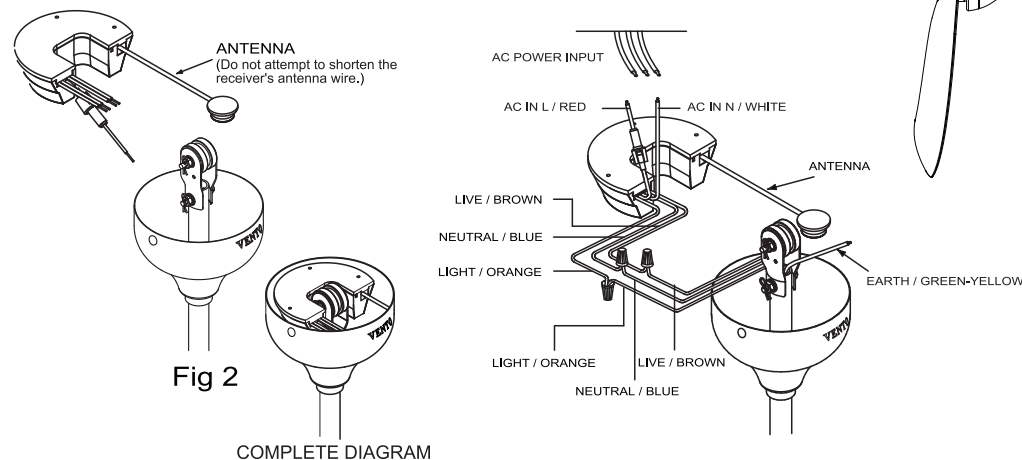
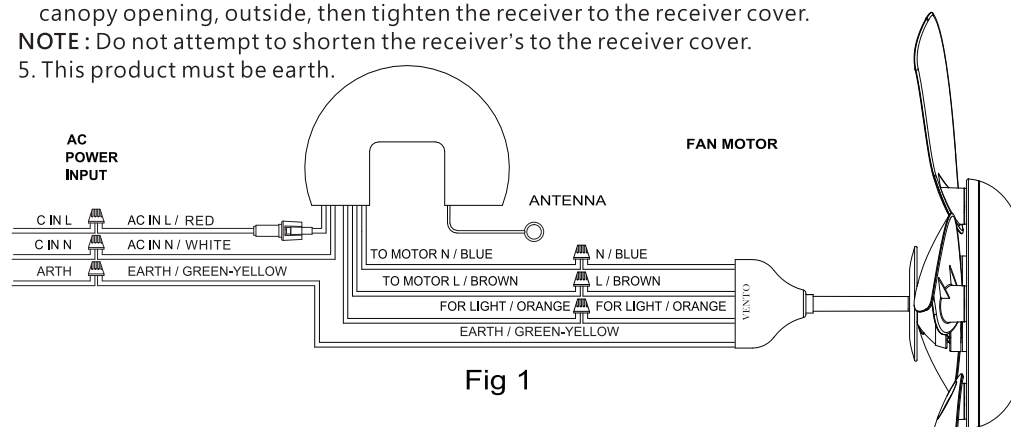
1. Please connect wires according to the diagram below, Fig 1.
2. Connect wires from receiver to wires from the ceiling fan according to color. Wires connecting the receiver and the ceiling fan have sticker indication.

Receiver		The ceiling fan	
To motor L	Brown	L	Brown
To motor N	Blue	N	Blue

3. Connect wires with sticker indicating "AC IN" from the receiver to the wires from ceiling.

Receiver		AC Power	
AC IN L	Red	AC IN L	Red, Yellow, Blue
AC IN N	White	AC IN N	Black
Earth	Green/Yellow	Earth	Green/Yellow

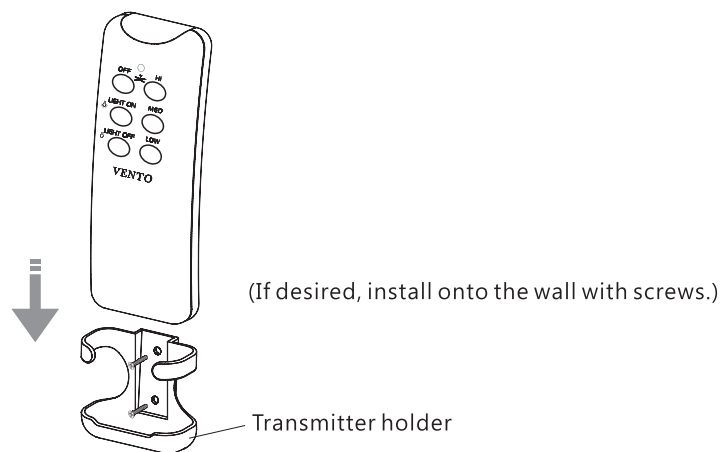
4. Place the receiver inside the canopy (as shown in diagram 2). Fit receiver cover onto the side canopy opening, outside, then tighten the receiver to the receiver cover.
5. This product must be earth.

**Fig 2**

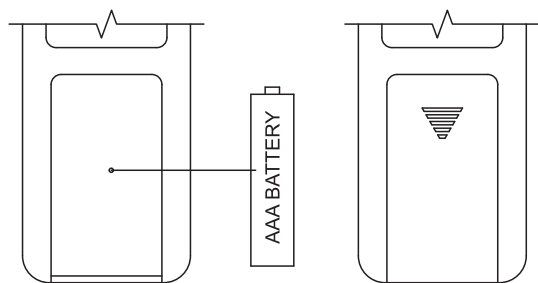
COMPLETE DIAGRAM

NOTE: The transmitter can be use with either wall bracket or the transmitter cover.

- Transmitter holder.



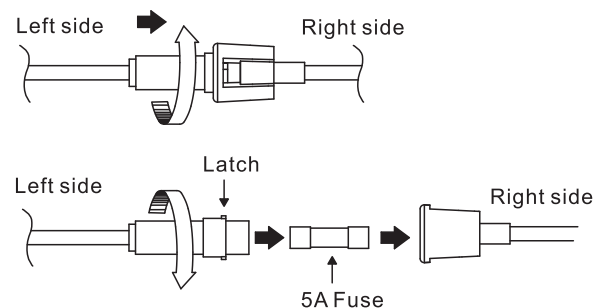
Your transmitter (remote control) is ready for use after installing batteries.



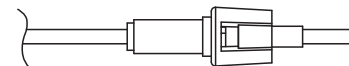
To open battery cover side down the cover according to the arrow direction.

1. Push both side of the fuse capsule towards each other and twist it to open the fuse capsule.
2. Remove the damaged 5A glass fuse from the capsule then replace a new 5A glass fuse.
3. To close the fuse capsule align the latch and groove the push in and twist to lock the fuse capsule.

Assemble chart



Completes the chart



Problem A: Fan do not start

Remedies:

1. Check the transmitter and confirm whether there is any battery poor contact or coming off. Replace battery if necessary.
2. Turn off power and check wiring connection.

Problem B: Excessively noise

Remedies:

1. Check all the screws to see whether they are completely tightened.
2. Properly grease all the motor transmission structure to ensure working smoothly.

Problem C: Serious wobble

Remedies:

1. Check and make sure that all the blades are completely fixed or not.
2. Check all the screws on the downrod are tightened or not.



VENTO

The energy conservation reduces the carbon is our responsibility

