



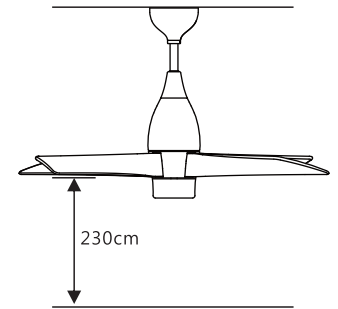
WINDRAD

Assembly and installation manual of ceiling fan

Attention

Please read all the manual and warranty card thoroughly before installation.
(according to the voltage specification on each product)

1. Installation must be carried out by a qualified electrician.
2. Turn off the electrical mains at the circuit breaker/fuse box.
3. Do not use power supply other than 220V-240V/50Hz-60Hz.
4. This appliance must be earthed.
5. When mounting the fan, ensure that the safety wire is looped across the mounting bracket.
6. The mounting bracket must be able to withhold a min. weight of 35 pounds and fixed on the ceiling and pull it right after installation.
7. The ceiling fan must be mounted at a min. height of 7.5 feet / 2.3m of clearance from the floor.
8. Do not place any objects in the path of the blades. While the fan is running, there should not be anything crashing fan blades to prevent any dangerous situation.
9. When all electrical connections are done, store all wires neatly.
10. Make sure that all screws and connections are tightly screwed and secured.
11. Please replace a complete set instead of part of it while the product lifespan is due.
12. Please prevent too much moisture on the position where you would like to install ceiling fan.
13. Don't mix the blades together when you purchase more than one set.
14. Fan must be turned off and stopped before reversing fan direction.
15. Please install the cords following the order of ground cord, fire cord and neutral cord.
16. There must be at least 60cm distance between fan blade and wall.
17. There must be at least 150 cm gap between two ceiling fans.
18. Do not place ceiling fan underneath the lighting, that will cause shaking shade.



Index

Important safety instructions	01
Accessory	02
Installation guide	03~07
Remote control operation instruction	08
First time setting of R/C	09
Trouble shooting	10

Warning

This product is designed to use only those parts supplied with this product and/or accessories designated specifically for using with this product. Using parts and/or accessories not designated for using with this product could result in personal injury or property damage. If the supply cord is damaged, it must be replaced by the manufacturer, its service agent or similarly qualified persons in order to avoid a hazard.

The appliance must be fitted with means for disconnection from the supply mains having a contact separation in all poles that provide full disconnection under overvoltage category III conditions, and these means must be incorporated in the fixed wiring in accordance with the wiring rules.

Note

This illustrations in this manual are for explanation purposes only and may differ from the actual unit. It is subjected to change without prior notice for further improvements.

Before installation, please check out all the accessories inside the cartons if there is no shortage, you may start it.
(For convenience, some screws are already attached to the main parts)

- a. Mounting bracket
- b. Ball
- c. Light plate
- d. Lampshade
- e. LED Lighting
- f. Motor housing with cover
- g. Blade x 4
- h. Main body screws kit

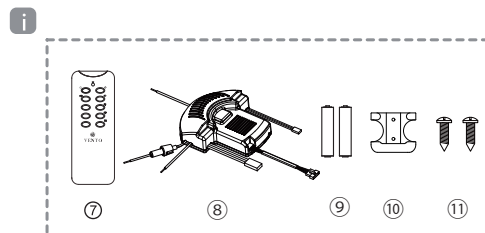
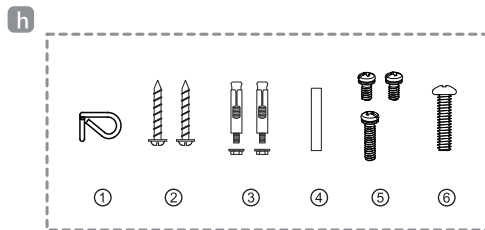
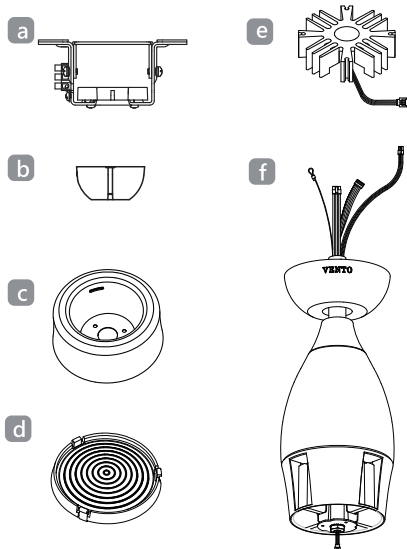
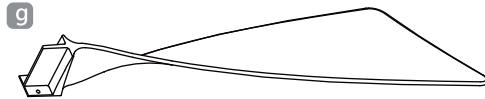
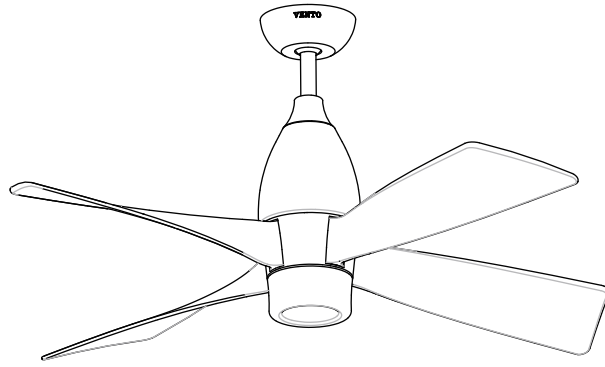
Screws set includes below item

- ① Clasp x 1
- ② Screws(for wooden ceiling) x 2
- ③ Expansion screws x 2
- ④ Lock pin x 1
- ⑤ Spring washer screws x 3
- ⑥ Blade screws x 7

- i. Remote control kit

Screws set includes below item

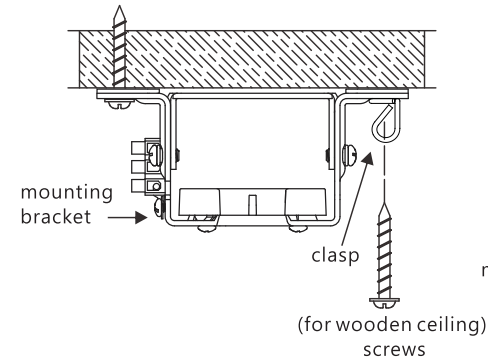
- ⑦ Transmitter x 1
- ⑧ Receiver x 1
- ⑨ 1.5V Battery x 2
- ⑩ Transmitter holder x 1
- ⑪ screw x 2



A -1

Installation on wooden ceiling :

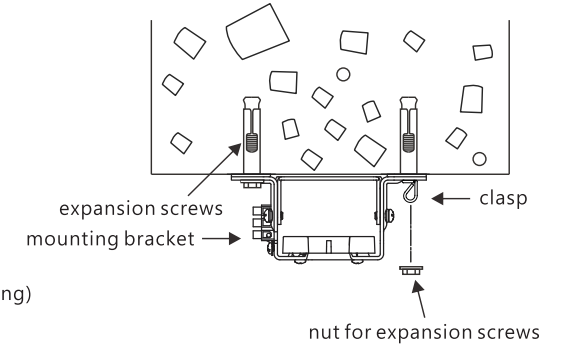
Fix mounting bracket on the ceiling with ceiling joist or suitable piece of timber. There are metal clasp attached in the screws kit, please fix it together with screws on the ceilings for hooking the safety wire.



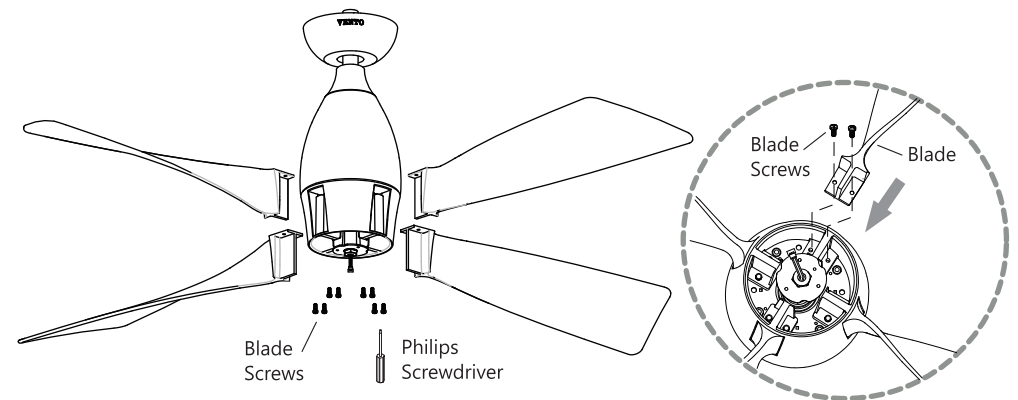
A -2

Installing on concrete ceiling :

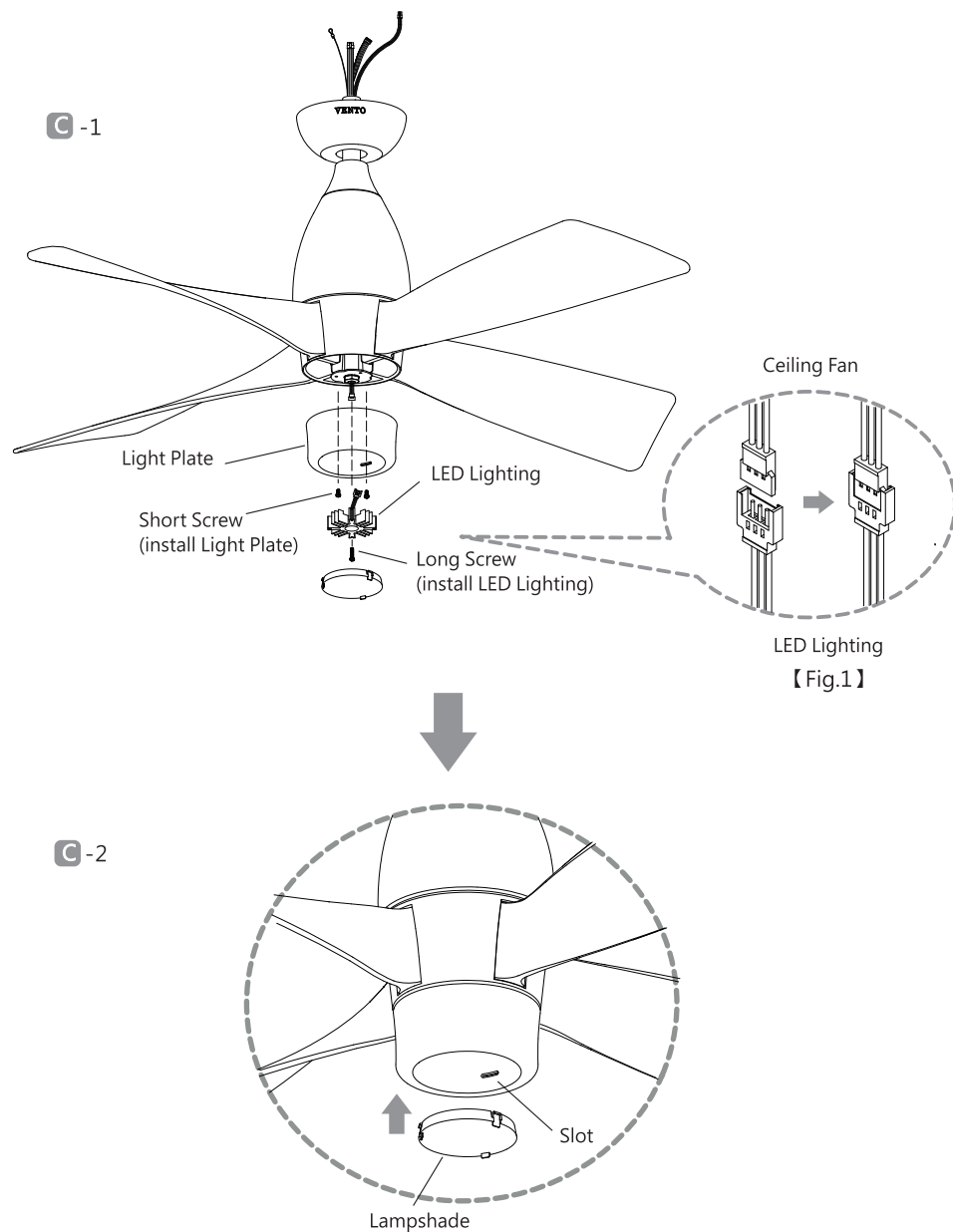
Please use 8mm power drill bit and drill about 40mm deep. Then fix expansion screws on the ceiling and remove the nuts, then install mounting bracket with the nuts on the ceiling. There is metal clasp inside the screws kit. Please fix it together with screws on the ceiling for hooking the safety wire.



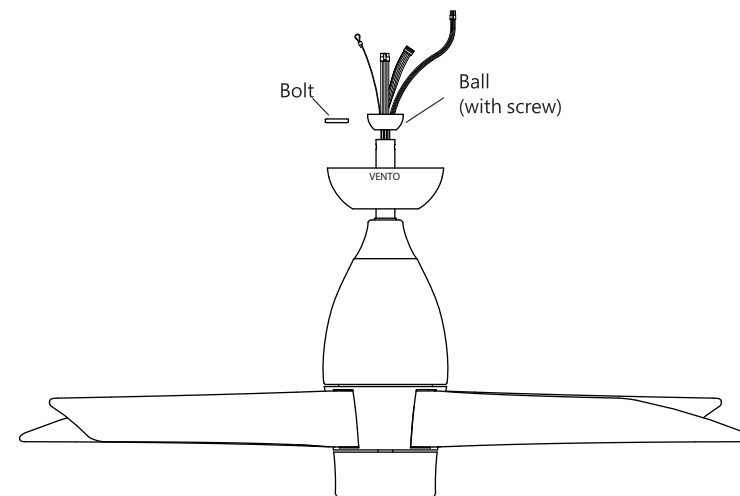
- B Align the T side of blades to the gaps of fan body and assemble them. Align the holes of blades to the holes of bracket then tighten screws.



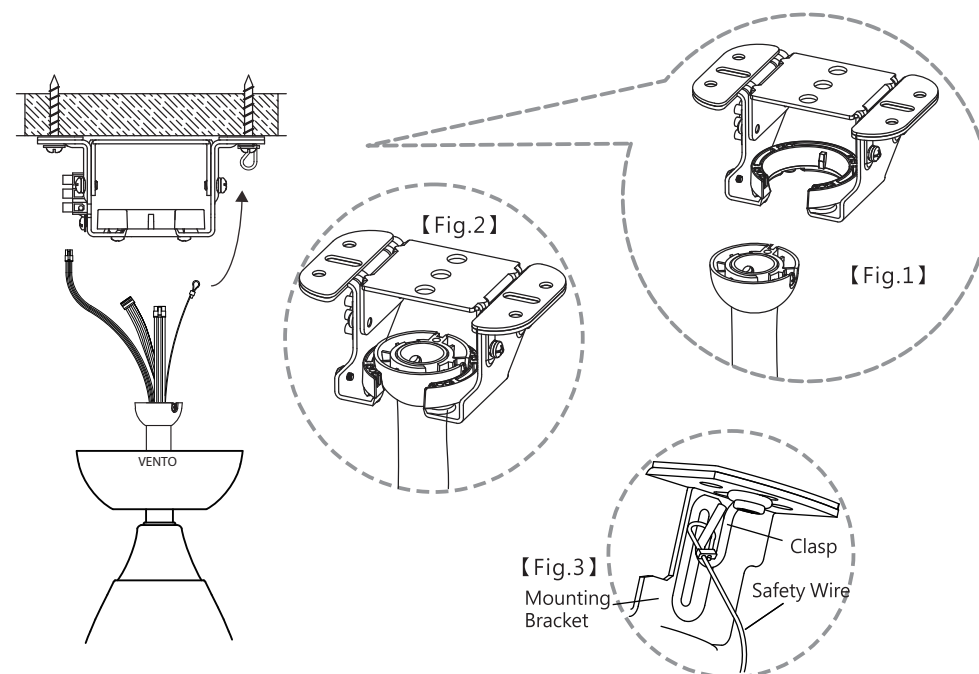
- C** -1. Install the light plate by two short screws. Connect LED light wires with light wires from ceiling fan as shown in Fig.1. Install LED lighting onto fan body by long screw.
 ATTENTION: Please don't damage the LED chips.
 -2. Click the lampshade into the light plate.



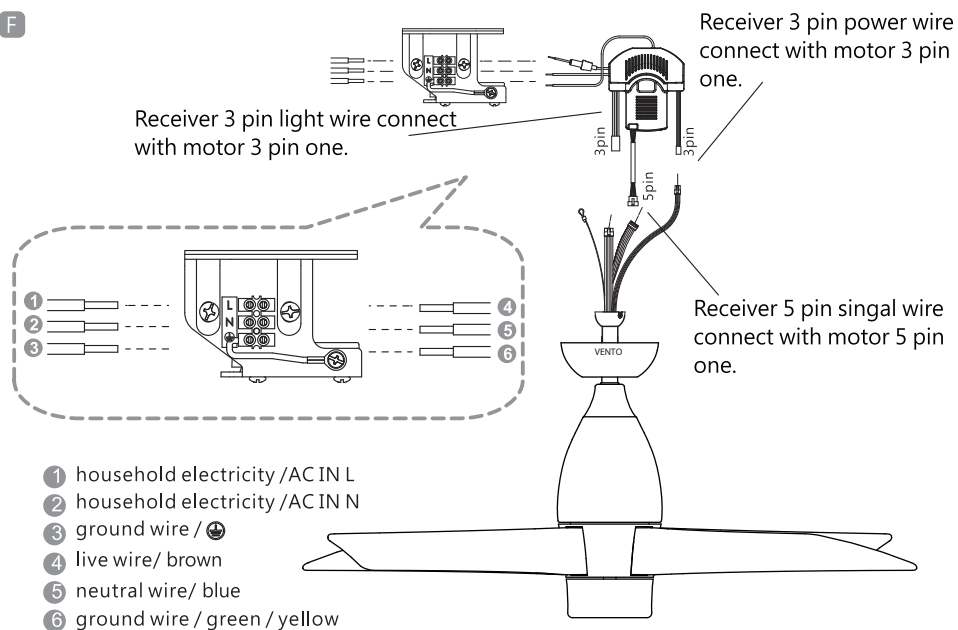
- D** Thread the downrod through the ball. Insert bolt, then fix the ball by screw.



- E** When mounting the fan, ensure that all screws are tightened. Install downrod (ball part) into mounting bracket opening that already securely fastened to a structural ceiling member. The tab opposite of the mounting bracket opening should fit in slot on ball as shown in Fig.1 &2. Loop the safety wire across the clasp as shown in Fig.3.

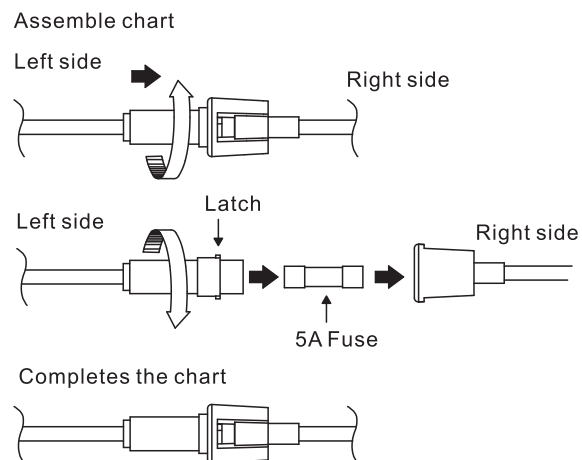


F



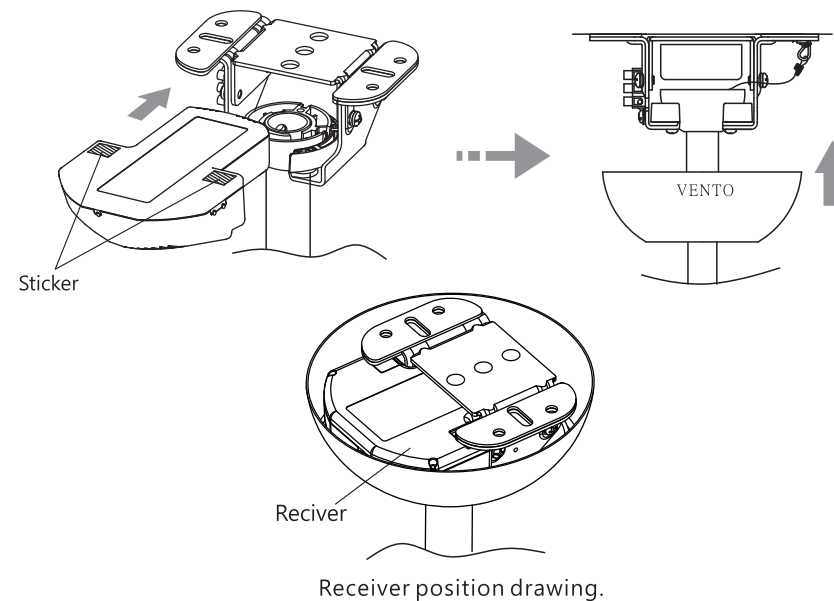
※ Fuse replacement

1. Push both side of the fuse capsule towards each other and twist it to open the fuse capsule
2. Remove the damaged 5A glass fuse from the capsule then replace a new 5A glass fuse.
3. To close the fuse capsule align the latch and groove the push in and twist to lock the fuse capsule.

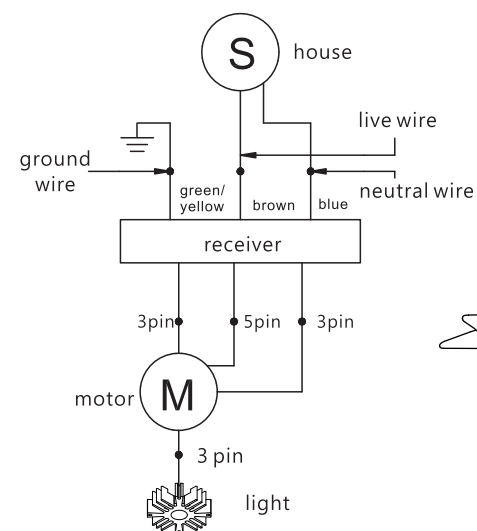


- G Before install receiver please tear off the both side sticker on receiver to get better heat conduction. Insert the receiver into the mounting bracket. Loosen the screws from the mounting bracket,uphold the canopy to cover the mounting bracket, then let the mounted hole aim at the screws,then firm the screws.

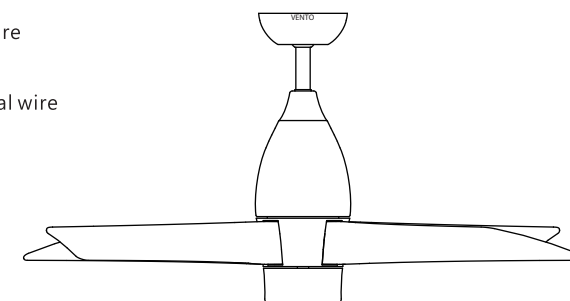
ATTENTION: Make sure all wires are proper connected.



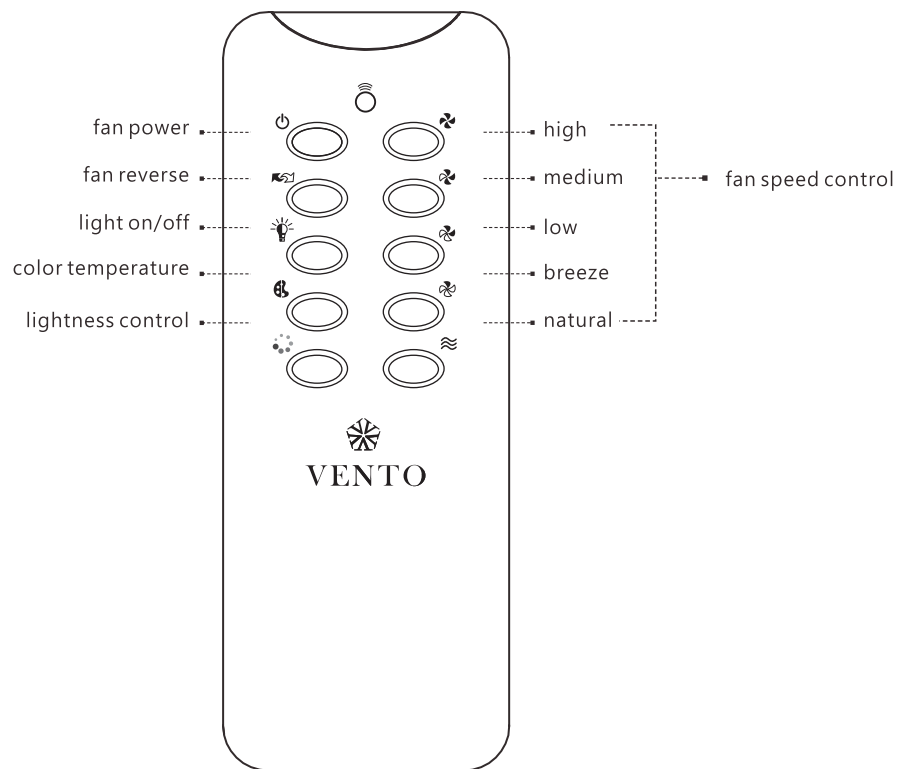
- H Wiring diagram.



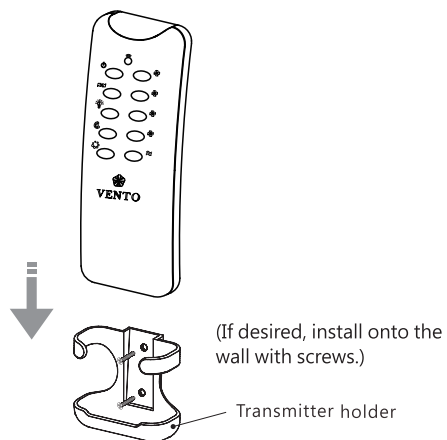
- I Ceiling fan installation accomplished drawing.



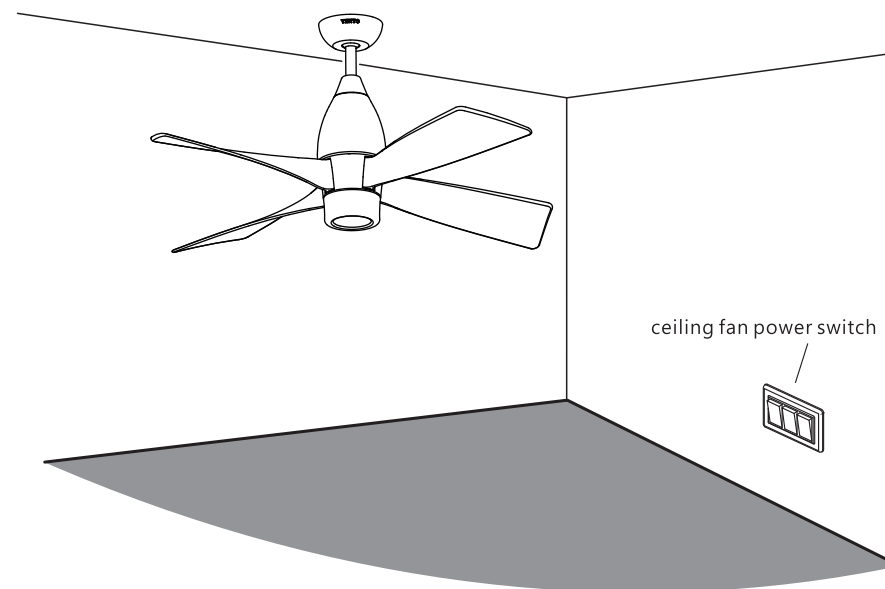
Remote control panel introduction.



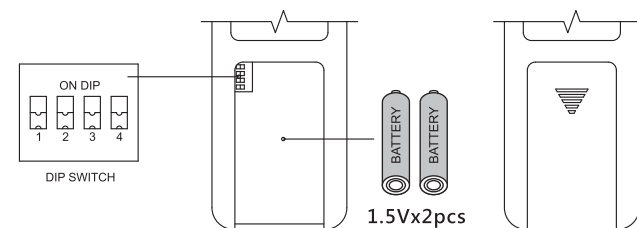
NOTE : The transmitter can be use with wall bracket.



1. When you use it for the first time, please press " Natural" button as basic setting.
 2. Press" Natural" continuously , and turn on" fan power", you will hear a "beep" sound which means the setting is accomplished.
- ※ If there is any poor signal condition, please repeat above steps or replace batteries.



3. If there are two ceiling fans installed in the same space, please adjust the dip switch on the transmitter to make each fan controlled with different setting. Please follow step 1 and step 2 to do the setting after adjustment.



Problem A: Fan do not start

Remedies:

1. Check the transmitter and confirm whether there is any battery power in poor contact or coming off. Replace batteries if necessary.
2. Turn off power and check wiring connection.
3. Check the wiring and fuse to see whether there is any problem.

Problem B: Excessively noise

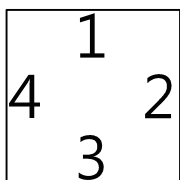
Remedies:

1. Check all the screws to see whether they are completely tightened.
2. Check mounting bracket and make sure it's properly installed.

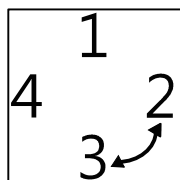
Problem C: Fan wobbles

Remedies:

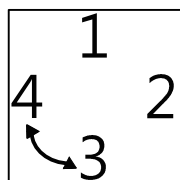
1. Check and make sure that all the blades are completely fixed or not.
2. Check external/internal Cover A are tightened or not.
3. Check downrod screws are tightened or not.
4. If this situation still existed, please try to switch blade installation in sequence.



Numbered tape placement



Switch 2-3




Switch 3-4

Warning

This appliance is not intended for use by persons (including children) with reduced physical, sensory or mental capabilities, or lack of experience and knowledge, unless they have been given supervision or instruction concerning use of the appliance by a person responsible for their safety. Children should be supervised to ensure that they do not play with the appliance.

This appliance can be used by children aged from 8 years and above and persons with reduced physical, sensory or mental capabilities or lack of experience and knowledge if they have been given supervision or instruction concerning use of the appliance in a safe way and understand the hazards involved. Children shall not play with the appliance. Cleaning and user maintenance shall not be made by children without supervision.

Correct Disposal of this product	
	<p>This marking indicates that this product should not be disposed with other household. Wastes throughout the EU. To prevent possible harm to the environment or human health from uncontrolled waste disposal, recycle it responsibly to promote the sustainable reuse of material resources. To return your used device, please use the return and collection systems or contact the retailer where the product was purchased. They can take this product for environmental safe recycling.</p>

NOTE: If you have lost the Owner's Manual, please contact the local agent or visit <http://www.ventotw.com/EN/ENindex.html> or sent email to service@ventotw.com for electronic version.

