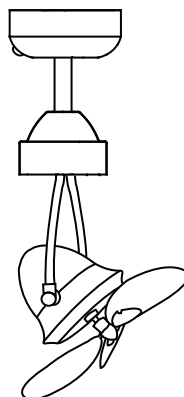
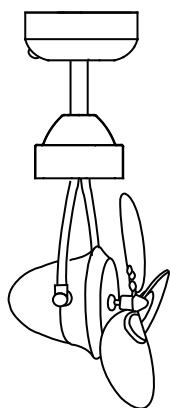
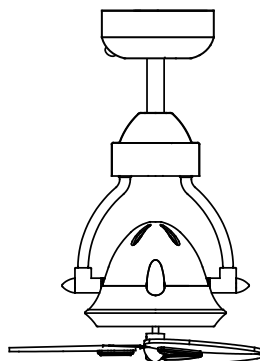
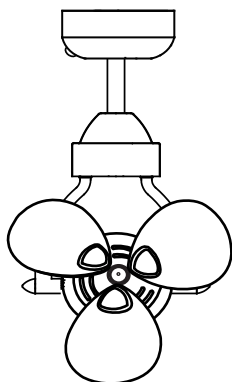


# INSTRUCTION MANUAL



## **JUMBO / BIANCA** **CEILING FAN**

### IMPORTANT: PLEASE READ BEFORE INSTALLATION

1. Installation must be carried out by a qualified wiring installer
  2. Turn off the electrical mains at the circuit breaker fuse box
  3. Use power supply 220-240V/50Hz.
  4. The ceiling mounting must be able to with hold a min of 16kg.
  5. Install ceiling fan blade more than 2.3 M above floor.
  6. Do not place any objects in the path of the blades.
  7. When all electrical connection is done, store all wire neatly.
  8. Make sure that all screws and connection are tightly screwed and secured.
9. This appliance is not intended for use by persons (including children) with Reduced physical, sensory or mental capabilities, or lack of experience and knowledge, unless they have been given supervision or instruction concerning use of the appliance by a person responsible for their safety. Children should be supervised to ensure that they do not play with the appliance.
10. his appliance can be used by children aged from 8 years and above and persons with reduced physical, sensory or mental capabilities or lack of experience and knowledge if they have been given supervision or instruction concerning use of the appliance in a safe way and understand the hazards involved. Children shall not play with the appliance. Cleaning and user maintenance shall not be made by children without supervision.
11. An all - pole disconnection must be incorporated in the fixed wiring in accordance with the wiring rules, a all - pole disconnection incorporated in the fixed wiring is to be provided.

## PARTS & ACCESSORIES

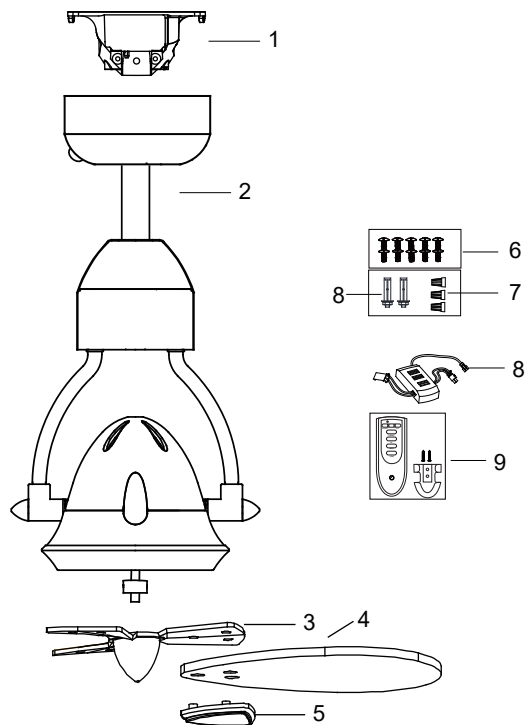


Fig.1

- 1 Mounting bracket x 1
- 2 Fan motor assembly x 1
- 3 Fan blade bracket x 1
- 4 Fan blades x 3
- 5 Fan blades fixing cap x 3
- 6 Fan blades screw x 9 (and 1 spare)
- 7 Wire Nut x 3
- 8 Expansion screws x 2
- 9 Remote receiver x 1 set
- 10 Remote transmitter x 1 set

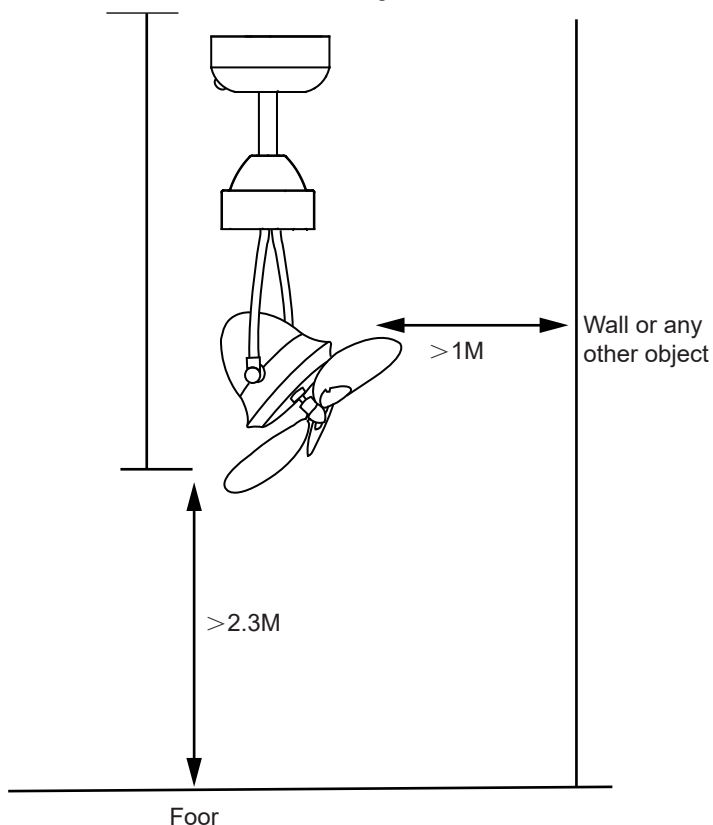
# FAN INSTALLATION INSTRUCTION

The fan must be installed so that the lowest point of the fan blade must be 2.3m from the floor.

**NOTE: The lowest point of the fan blade is when the fan head is adjusted to 45°.**

The ceiling fan must be installed in a location so that the blades are a minimum 1M spacing from the tip of the blade to the nearest objects or walls.

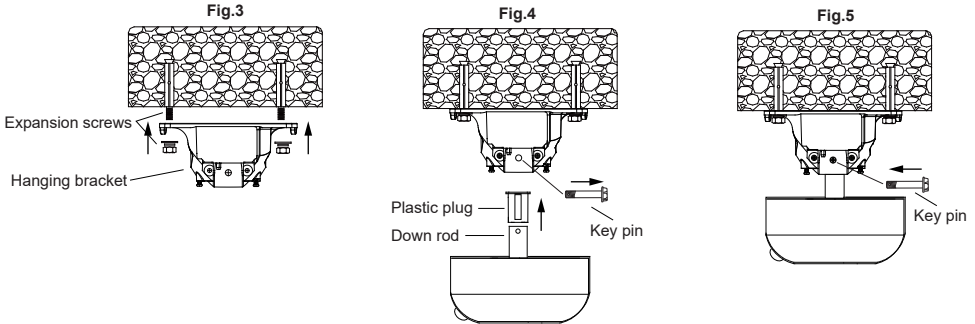
Fig. 2



# INSTALLATION OF THE MOUNTING BRACKET

**WARNING: Make sure electricity off at the main power box before commencing work.**

- Install the hanging bracket to the ceiling joist or structure that is capable of carrying a load of at least 16kg, with the two long screws(expansion screws) provided.(3)
- Remove the key pin from the side of hanging bracket.(4)
- Lift the fan assembly onto the mounting bracket, put the holes of down rod and plug aligning the hanging bracket holes, Make sure to tighten the key pin to prevent the fan from falling .(5)



## ELECTRICAL WIRING DIAGRAM

**All electrical connections must be in accordance with local and national electrical code standards. If you are unfamiliar with proper electrical wiring connections obtain the services of a qualified electrician.**

- Make the wire connection L, N, and Rotate to the remote receiver as shown the diagram below in **Fig. 6**
- Carefully insert the Remote Receiver above the hanger ball in the remainder spacing in the mounting bracket. Take care not to damage or loosen any of the wiring **Fig. 7**

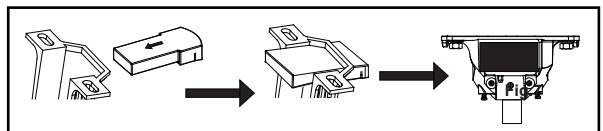
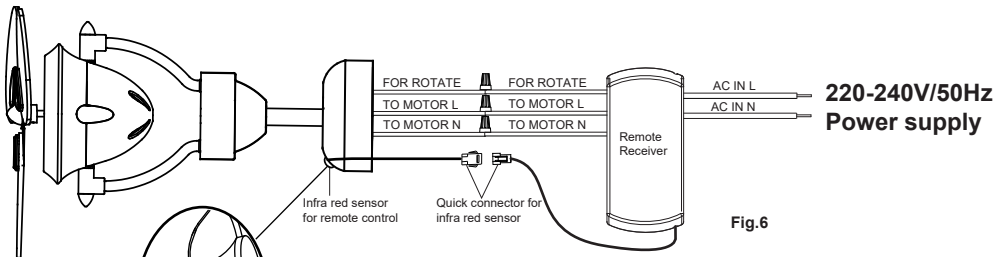


Fig.7

## CANOPY ASSEMBLY

- After completing electrical connection, cover the MOUNTING BRACKET with the CANOPY.
- Ensure that all electrical wiring is carefully tucked inside the canopy.
- Locate 2 screws on underside of mounting bracket.
- Attach canopy to the mounting bracket by placing screws into slotted holes in canopy.
- Twist clockwise to lock into place. Tighten screws firmly.

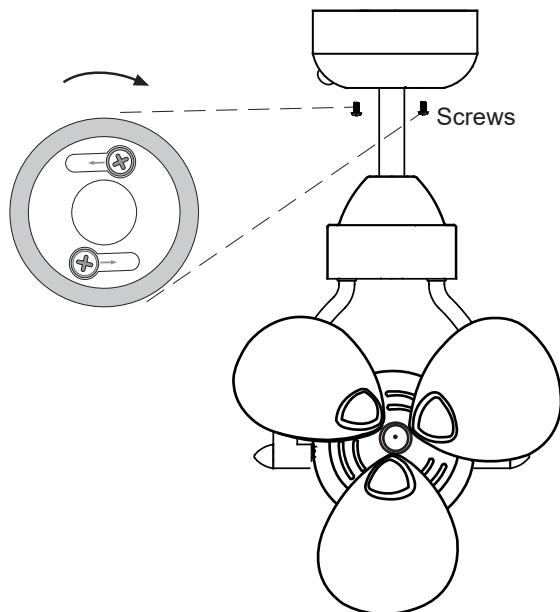


Fig.8

## INSTALLATION OF THE FAN BLADES

- Align the 3 mounting holes on the blade (3) to the 3 mounting holes of the blade bracket (2);
- Insert the fixing cap (4) into the mounting holes from the bottom of the blade (3) and secure by tightening the 3 screws (1) from the top of the blade bracket (2).
- Once completed, repeat the same process on the remaining blades.

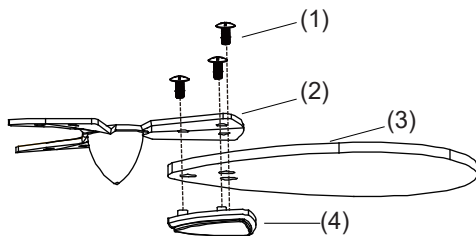


Fig.9

- Install the assembled fan-blades (7) to the motor part (5).
- Tighten the 2 set screws (6) on the side of the motor shaft.

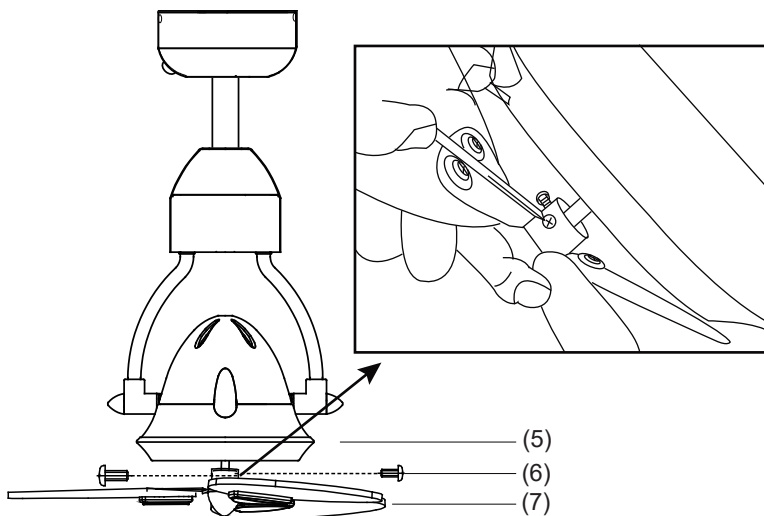


Fig.10

## ADJUSTMENT OF THE FAN HEAD

- Loosen the two set screws on both sides of the motor; (Fig.11)
- Rotate the fan head and aim the arm screw at the desired angle (There are only three angles available: 0°, 45°, 90°. They are labelled on the motor part) (Fig.12)
- Retighten the set screws after adjusting to the desired angle. Ensure the set screws are tight and positioned well into the slot of the desired angle. (Fig.13)

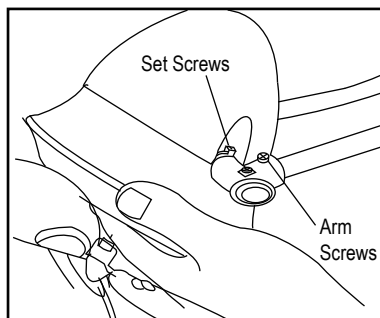


Fig.11

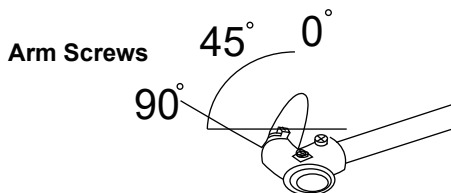


Fig.12

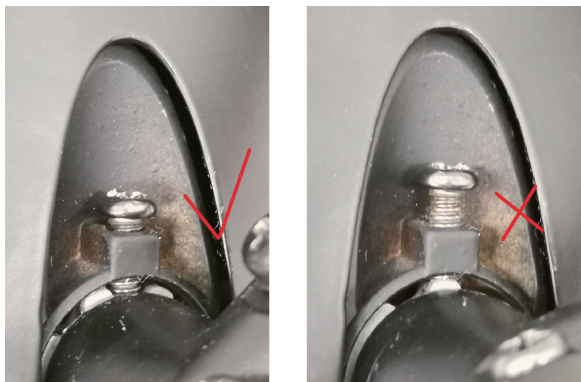
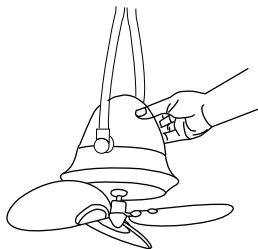
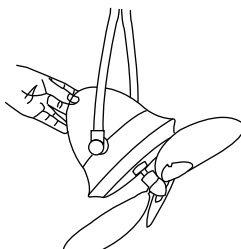


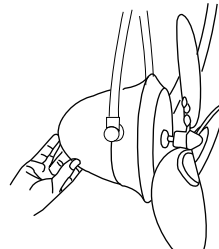
Fig.13



Vertical 0 degree



45 degree



Horizontal 90 degree



## MAINTENANCE

**Due to fan's natural movement, connections may get loose after a period of usage. To ensure a proper and safety usage, We are highly recommended to inspect and tighten all connections every 6 months.**

### CLEANING

Clean your fan periodically to prolong its new appearance. Basic cleaning procedures are as follows:

1. Use only lukewarm water. Do not use detergent, corrosive or acidic solution.
2. Damp the cloth lightly. Use only soft or lint-free cloth to clean the fan. Rough fabric will scratches the surface.
3. Apply a thin coat of furniture polish to the wooden blades will protect and enhance the appearance.
4. To cover small scratches, apply a light coat of shoe polish over it.
5. There is no need to lubricant the fan.

## TROUBLESHOOTING

**Check on the following before lodging a service report.**

SYMPTOM	PROBLEM	SOLUTION
Fan not moving	<ul style="list-style-type: none"><li>• Main cables not connected</li><li>• Wire connection loose</li></ul>	<ul style="list-style-type: none"><li>• Check main and branch circuit breakers or fuse.</li><li>• Check the line wires connections to the fan and switch housing.</li></ul>
Fan noisy	<ul style="list-style-type: none"><li>• Housing screws are loose</li><li>• Wire and nut connections rattles against each other.</li><li>• Canopy touches the ceiling.</li></ul>	<ul style="list-style-type: none"><li>• Tighten all screws</li><li>• Separate and store neatly the wire connections from the nut.</li><li>• Check to ensure the canopy is not touching or too close to the Ceiling.</li></ul>
Remote control Not working	<ul style="list-style-type: none"><li>• Remote and receiver code different</li><li>• Battery not installed</li><li>• Weak battery</li></ul>	<ul style="list-style-type: none"><li>• Check that the codes to ensure exactly the same.</li><li>• Install the remote control battery</li></ul>