

Xled

Instruction Manual

Tables of Contents

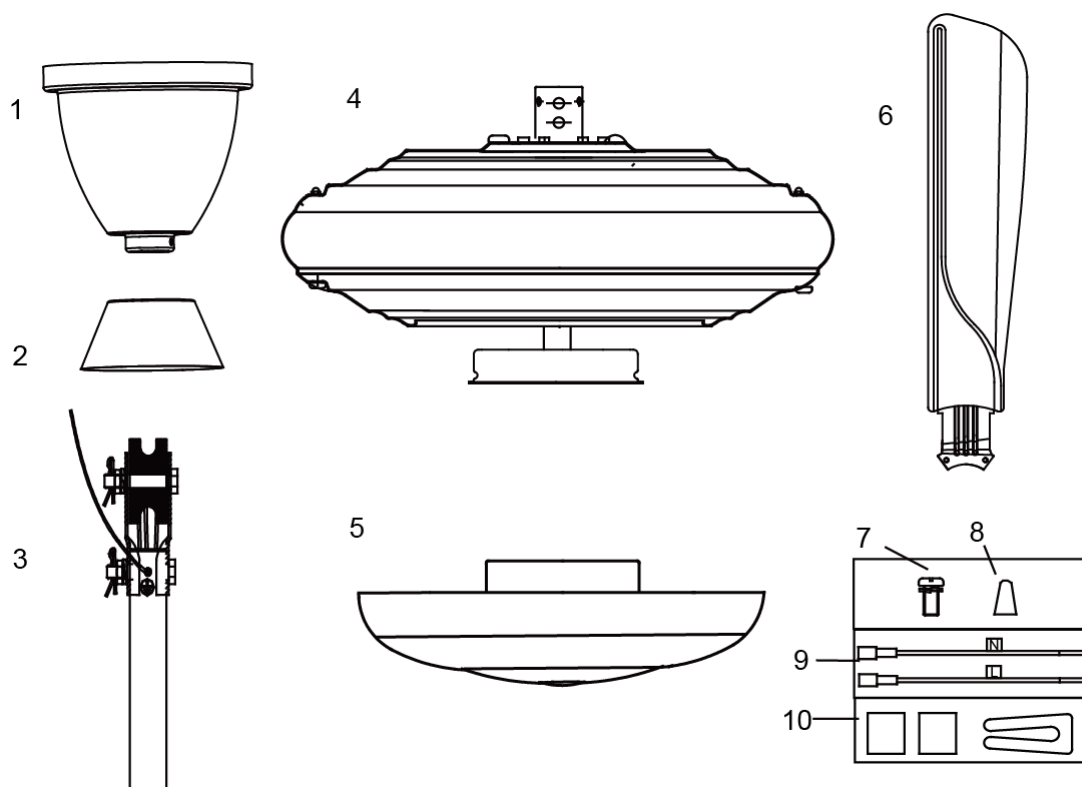
Safety Precaution	1
Parts & Accessories	2
Fan Installation Instruction	3
Fan Mounting	4
Blades Assembly.....	5
Install Light Kit	5
Electrical Connection	6
Maintenance	7
Troubleshooting	7

Safety Precaution

IMPORTANT: PLEASE READ BEFORE INSTALLATION

1. Installation must be carried out by a qualified wiring installer
2. Turn off the electrical mains at the circuit breaker fuse box
3. Use power supply 220-240V/50Hz.
4. When mounting the fan, ensure that the safety cable is loop across the ceiling mounting hook.
5. The ceiling mounting hook must be able to with hold a min of 35 pounds.
6. Install ceiling fan blade more than 2.3 M above floor.
7. Do not place any objects in the path of the blades.
8. When all electrical connection **is** done, store all wire neatly.
9. Make sure that all screws and connection are tightly screwed and secured.
10. This appliance is not intended for use by persons (including children) with Reduced physical, sensory or mental capabilities, or lack of experience and knowledge, unless they have been given supervision or instruction concerning use of the appliance by a person responsible for their safety. Children should be supervised to ensure that they do not play with the appliance.
11. This appliance can be used by children aged from 8 years and above and persons with reduced physical, sensory or mental capabilities or lack of experience and knowledge if they have been given supervision or instruction concerning use of the appliance in a safe way and understand the hazards involved. Children shall not play with the appliance. Cleaning and user maintenance shall not be made by children without supervision.
12. An all-pole disconnection must be incorporated in the fixed wiring in accordance with the wiring rules, a all-pole disconnection incorporated in the fixed wiring is to be provided.

Parts & Accessories



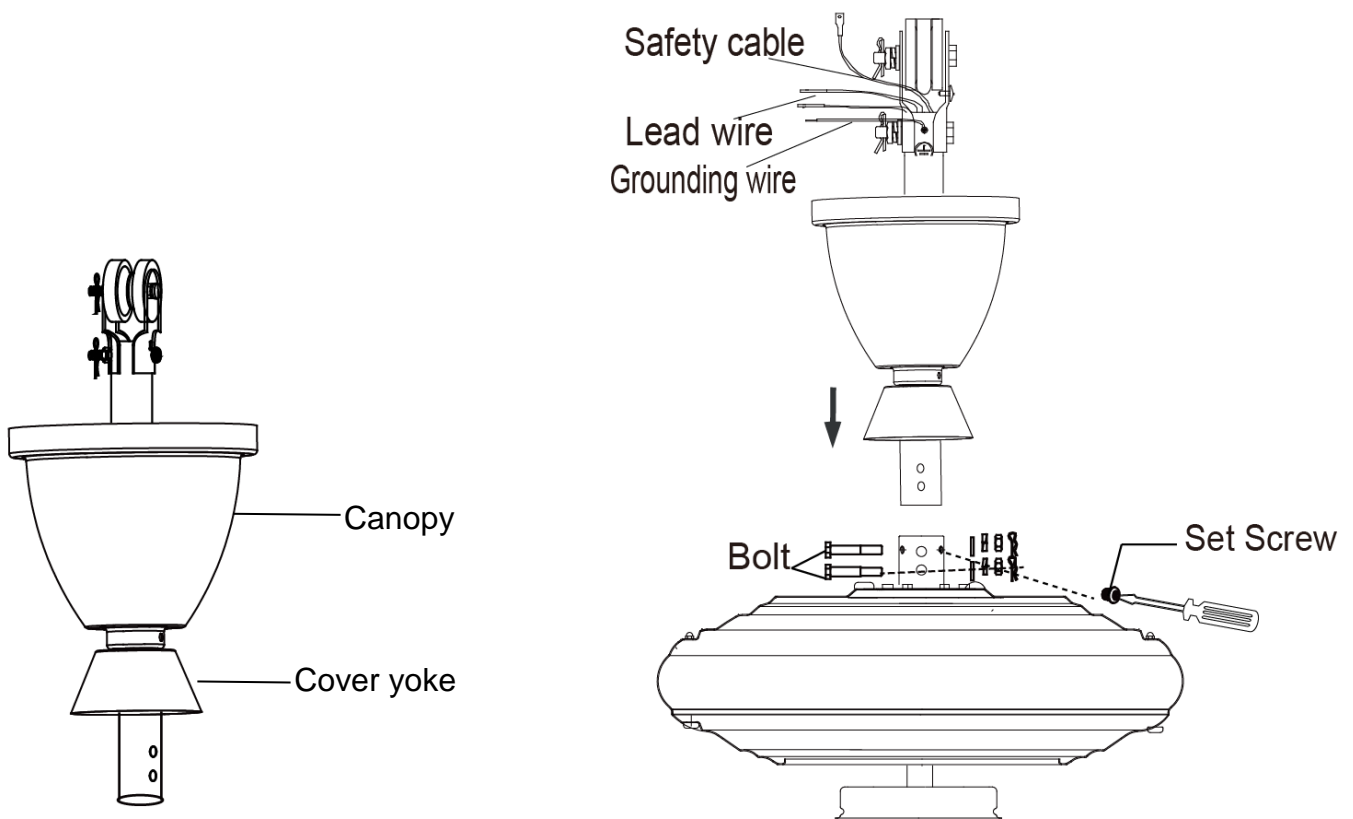
- 01 Canopy x1
- 02 Cover yoke x1
- 03 Down rod x1
- 04 Motor x1
- 05 LED Light Kit x1
- 06 Blade x5
- 07 Blade holder screws x10
- 08 Wire nut x3
- 09 Lead wire x2
- 10 Balancing kits x1

Fan Installation Instruction

IMPORTANT: SWITCH OFF THE ELECTRICAL MAINS THE CIRCUIT BREAKER FUSE BOX.

Follow the steps below to hang your fan properly.

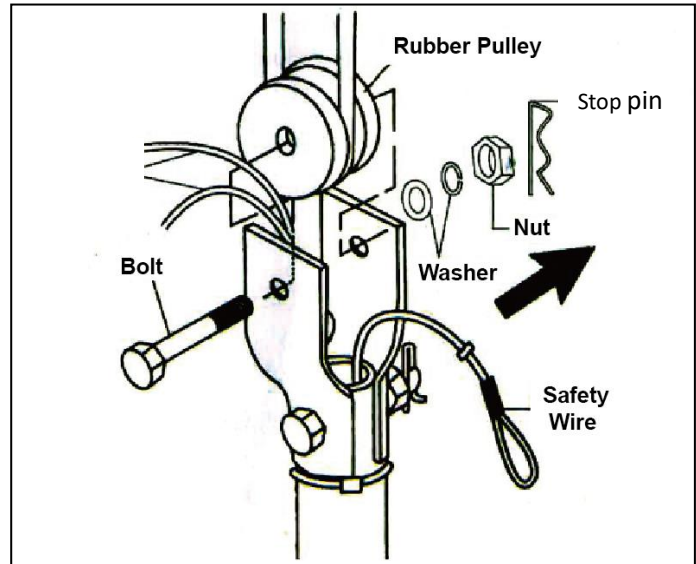
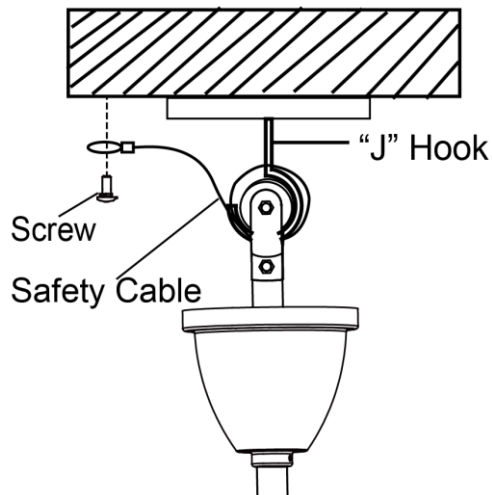
1. Insert the downrod through the canopy and yoke cover
2. Through the lead wire and safety cable out the top of downrod.
3. Align the holes at the bottom of the downrod with the holes in the yoke on top of the fan motor assembly.
4. Carefully insert the bolt through the holes in the yoke and downrod. Be careful not to jam against the wires inside the downrod. Insert **stop pin** to ensure security.
5. Tighten the two screws on top of the fan motor firmly.
6. Slide down the yoke cover



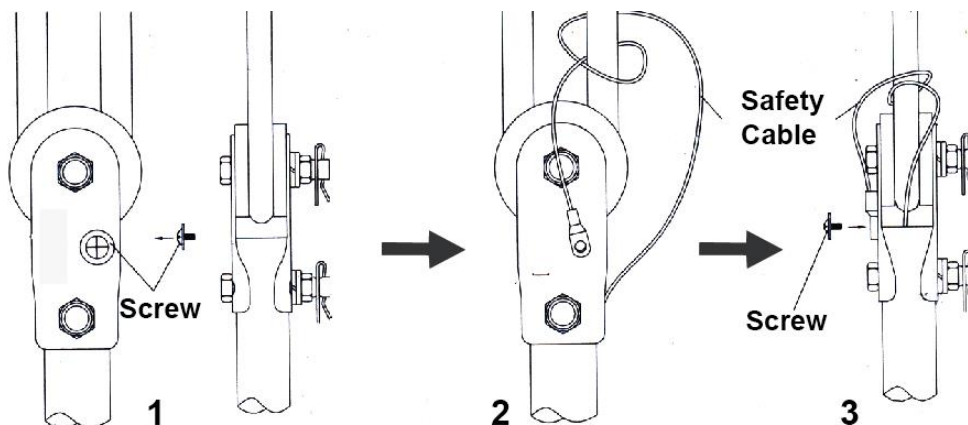
Warning : Make sure the **stop pin** is properly engaged to prevent it from falling out. Failure to properly install **stop pin** as noted could result in fan loosening and possibly falling.

Fan Mounting

1. "J" Hook mounted , When mounting the fan, ensure that the safety cable is loop across the "J"hook.
2. "U" Hook mounted Remove the bolt, stop pin, nut, washer and rubber pulley from the downrod. Place the rubber pulley onto "U" hook and fix back the bolt, stop pin, nut and washer.

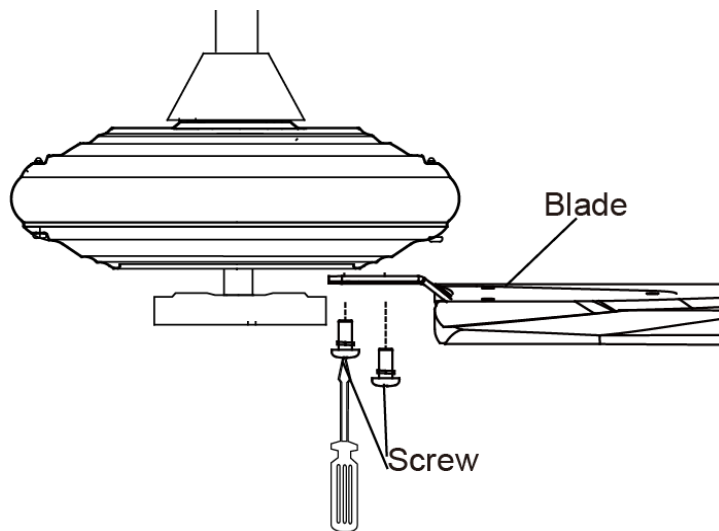


3. Remove the safety Cable Screw from the down rod bracket. Arrange and tie the Safety Cable as step 2. Firmly screw the Safety Cable onto the down rod.



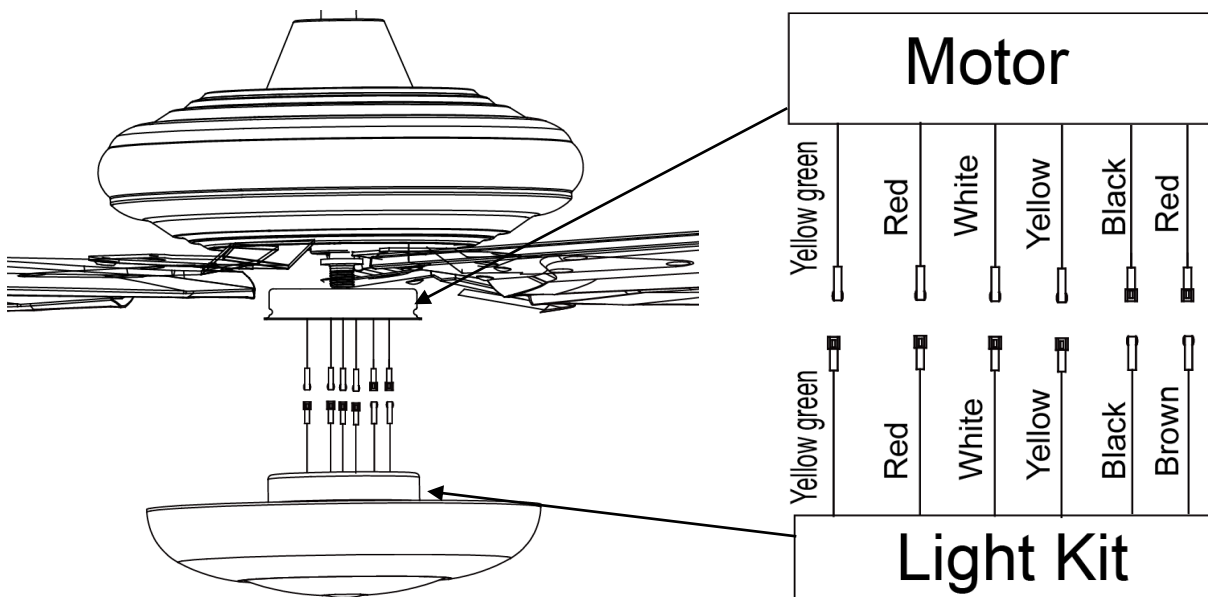
Blades Assembly

1. Insert the blade screws through the blade then secure the blade to the motor by tightening the 2 screws
2. Repeat this process to install the other blades to the motor



Install Light Kit

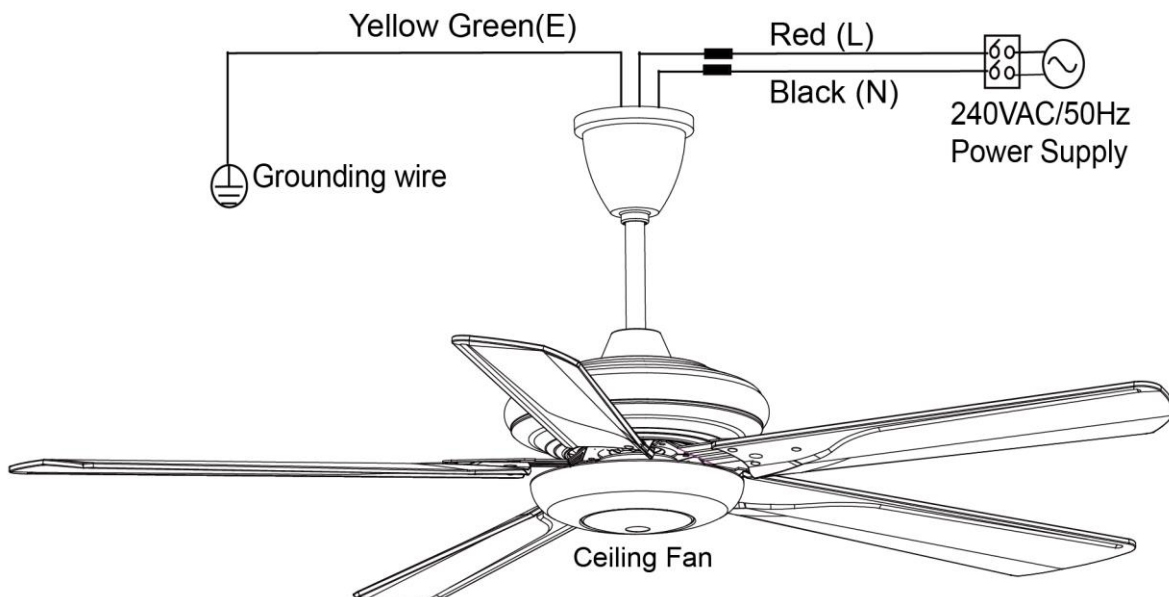
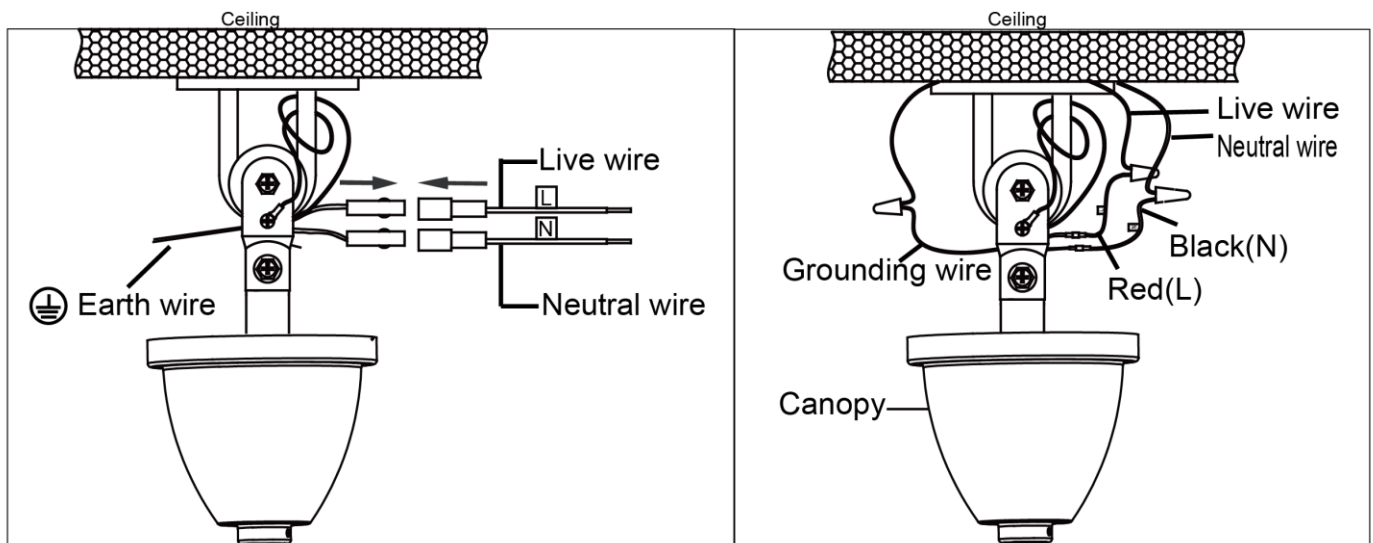
1. Connect the plugs together wires from housing assembly to the wires from light kit.
2. Finally install the light kit to the housing by rotating it clockwise until tighten to secure the position.



Electrical Connection

1. Before installing the fan turn off the power supply.
2. With the two pieces of lead wires from the screw pack, connect the wire to the fan.
3. All electrical connections must be in accordance with local and national electrical code standards. If you are unfamiliar with proper electrical wiring connections obtain the services of a qualified electrician.

Connect the red & black wire to the house's supply wire. Diagram shows a complete assembly of the ceiling fan with safety wire mounted on the hook. Supply leads accommodated in the canopy.(Refer wiring diagram below)



RED-----LIVE WIRE

BLACK-----NEUTRAL WIRE

YELLOW GREEN -----GROUND WIRE

Finally raise the top canopy and tighten it with the screw attached

Maintenance

Due to fan's natural movement, connections may get loose after a period of usage. To ensure a proper and safety usage, We are highly recommended to inspect and tighten all connections every 6 months.

CLEANING

Clean your fan periodically to prolong its new appearance. Basic cleaning procedures are as follows:

1. Use only lukewarm water. Do not use detergent, corrosive or acidic solution.
2. Damp the cloth lightly. Use only soft or lint-free cloth to clean the fan. Rough fabric will scratches the surface.
3. Apply a thin coat of furniture polish to the wooden blades will protect and enhance the appearance.
4. To cover small scratches, apply a light coat of shoe polish over it.
5. There is no need to lubricant the fan.

Troubleshooting

Check on the following before lodging a service report.

SYMPTOM	PROBLEM	SOLUTION
Fan not moving	<ol style="list-style-type: none">1. Main cables not connected2. Wire connection loose	<ol style="list-style-type: none">1. Check main and branch circuit Breakers or fuse.2. Check the line wires connections to the fan and switch housing.
Fan noisy	<ol style="list-style-type: none">1. Housing screws are loose2. 2.Wire and nut connections rattles against each other.3. Canopy touches the ceiling	<ol style="list-style-type: none">1. Tighten all screws2. Separate and store neatly the wire connections from the nut.3. Check to ensure the canopy is not touching or too close to the Ceiling.
Remote control Not working	<ol style="list-style-type: none">1. Remote and receiver code different2. Battery not installed3. Weak battery	<ol style="list-style-type: none">4. Check that the codes to ensure exactly the same5. Install the remote control battery6. Change a new battery