



MAJESTIC

PREMIUM INTERIOR PAINT

Design



JOTUN PAINTS (MALAYSIA) SDN BHD (824636-K) Lot 7, Persiaran Perusahaan, Seksyen 23, 40300 Shah Alam, Selangor Darul Ehsan, Malaysia. Tel: +603 5123 5500 Fax: +603 5123 5599
jotun.com.my

JOTUN (SINGAPORE) PTE LTD 37 Tuas View Crescent, Singapore 637236. Tel: +65 6508 8288 Fax: +65 6265 7484
jotun.com.sg

Express your walls as masterpieces of beautiful colours layered with expressive textures.

At Jotun, we're delighted to bring you a world of effects to redecorate your home. We'll show you how with the help of our dedicated colour team. They get their inspiration from the latest colour and design trends, translating them into fresh new ideas to transform plain walls into stylish and sophisticated works of art.

Jotun Majestic Design's concept of 'Impressionism' lets you express and create your own masterpiece walls. Inspired by nature's beauty, Majestic Design captures the essence of inspirational natural sceneries, and expressing them on your walls. With Majestic Design, you can now completely transform the atmosphere of your interiors and express your individuality. Indeed, the possibilities are simply endless! Change begins now.

Be your own impressionist, with Jotun Majestic Design.

Lisbeth Larsen
Jotun Global Colour Manager



BE YOUR OWN

Impressionist



Diamond

Sparkling finish echoing the glamorous brilliance of stars and diamonds inspired by glittering stars in a mythical fairytale twilight.



Base colour **4625 Nordic Seas**
Finished with **4725 Fantasy**



Majestic Design Diamond lulls you into deep relaxation, with the glittering stars and diamonds whispering their secrets across the serene night sky.

Base colour **4116 Corvus Black**
Finished with **9963 Desert Sky**



Base colour **3252 Poison Red**
Finished with **3338 Cherry Rouge**



Base colour **2110 Yoga**
Finished with **2865 Forever Yours**



FEATURES



LOW ODOUR



DIY FRIENDLY



FORMULATED WITHOUT
HARMFUL CHEMICALS

TrueColour™
Technology+

MULTICOLOR
Tintable





Base colour **5180 Chini**
Finished with **5415 First Dance**

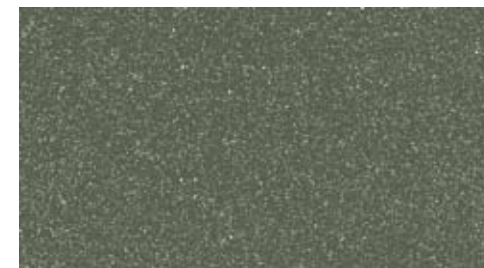
Jotun Majestic Design embraces a DIY friendly concept so homeowners can apply the paint effortlessly like professionals. Our wide range of Jotun signature designs are also easy to replicate and achieve. To learn more, just scan the QR code on our brochures or refer to our step-by-step paint guide. It's that easy!



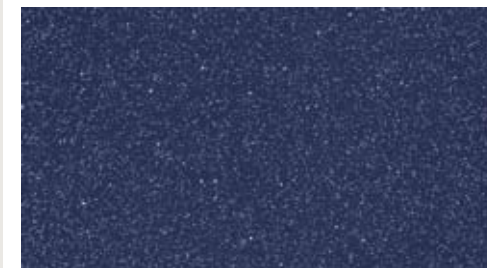
Base colour **5180 Chini**
Finished with **5415 First Dance**



Base colour **4116 Corvus Black**
Finished with **9963 Desert Sky**



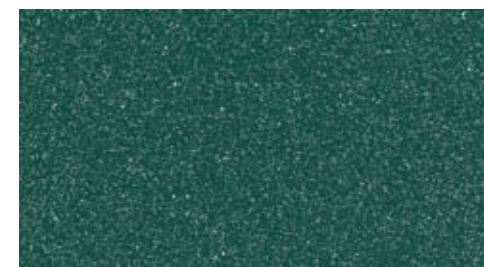
Base colour **7154 Greenwich**
Finished with **7558 Carriage**



Base colour **4731 Deep Cosmo**
Finished with **4728 Fairy Sparkle**



Base colour **9913 Matrix**
Finished with **9962 Tie The Knot**



Base colour **6241 Green Odyssey**
Finished with **6333 Almas**



Base colour **4625 Nordic Seas**
Finished with **4725 Fantasy**



Base colour **0001 White**
Finished with **0001 White**



Base colour **6031 Pale Moss**
Finished with **6334 Fairytale**

*All colours reproduced are shown as close to actual paint colours as modern printing techniques allow. Colour appearance or finishing will vary according to amount of coats, style of strokes applied and individual painting methods. Where colour matching is critical, an applied sample is recommended.

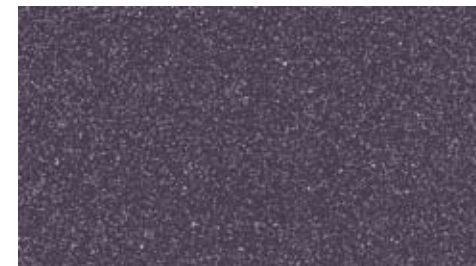
Base colour **2374 Bliss**
Finished with **2867 Lace**



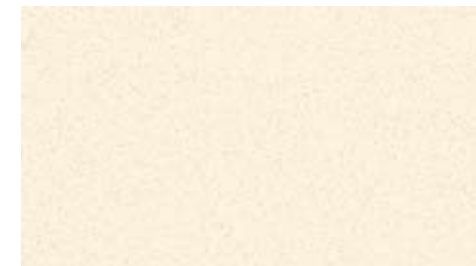
Base colour **2846 Winery**
Finished with **2864 Kosha**



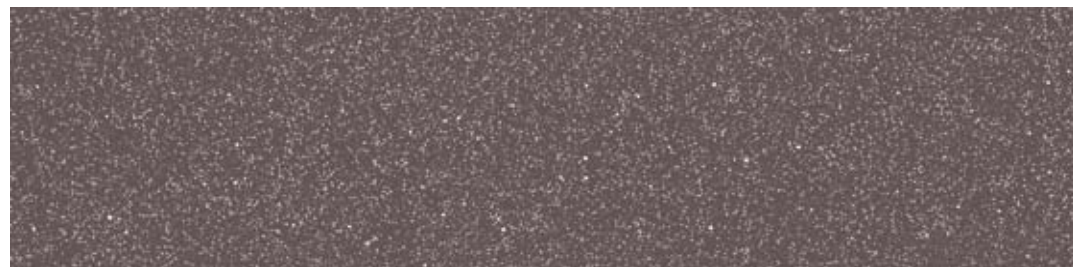
Base colour **3252 Poison Red**
Finished with **3338 Cherry Rouge**



Base colour **4623 Dark Indigo**
Finished with **4726 I do**



Base colour **2228 Vision**
Finished with **2866 Clouds**



Base colour **2110 Yoga**
Finished with **2865 Forever Yours**



Base colour **3114 Rose Leaf**
Finished with **3337 Princess**



Base colour **4391 Lavender Drops**
Finished with **4727 Lilac Bouquet**



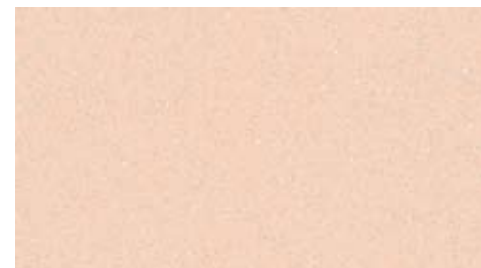
Base colour **6031 Pale Moss**
Finished with **6334 Fairytale**



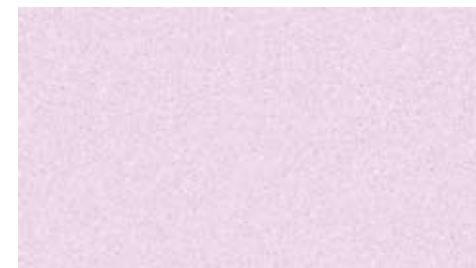
Base colour **10429 Discrete**
Finished with **10607 Dreams**



Base colour **10341 Pale Ash**
Finished with **10606 Honeymoon**



Base colour **2374 Bliss**
Finished with **2867 Lace**



Base colour **3302 Little Princess**
Finished with **3336 Veil**

*All colours reproduced are shown as close to actual paint colours as modern printing techniques allow. Colour appearance or finishing will vary according to amount of coats, style of strokes applied and individual painting methods. Where colour matching is critical, an applied sample is recommended.

Prestige

Inspired by the sunset clouds on the horizon turning into shimmering gold. Its luxurious metallic finish elevates the greatness and dramatically illuminates the already beautiful home.



Base colour **1832 Milky Way**
Glazed over with **Gold**

Base colour **4477 Deco Blue**
Glazed over with **Gold**



Majestic Design Prestige is an easy to apply, high quality premium interior design paint with virtually no limit to the Gold and Antique Gold colour combination for your home! Wall stains are easily wiped off. It's the perfect paint for places that stain easily – like halls, staircases and children's bedrooms.



Gold*
Base colour **1368 Mango Sorbet**



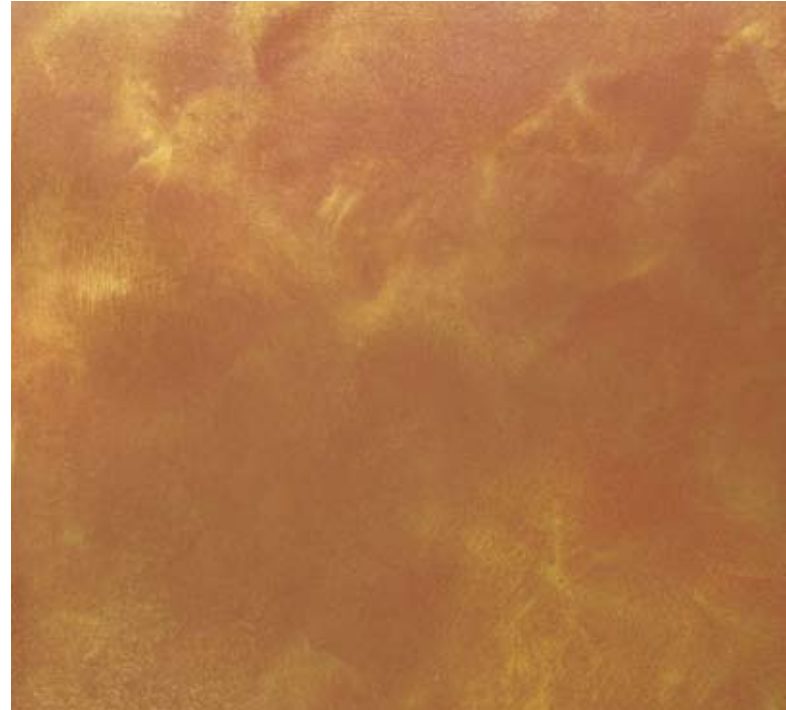
10491 Antique Gold
Base colour **8249 Summer Meadow**

Base colour **1032 Iron Grey**
Glazed over with **Gold**



* Gold/ Gold Base can also be tinted on Multicolour system. The colours showcased here are combined with base colours for viewing and differentiation purposes only.
(Note: Majestic Design Prestige & Majestic Design Pearl are semi-opaque).

Base colour **2994 Heat**
Glazed over with **Gold**



Base colour **2994 Heat**
Glazed over with **Gold**



Base colour **1832 Milky Way**
Glazed over with **Gold**



Base colour **2206 Yellow Stone**
Glazed over with **Gold**



Base colour **8054 Sunny Spot**
Glazed over with **Gold**



Base colour **2561 Mountain Sunset**
Glazed over with **Gold**

FEATURES



LOW ODOUR



DIY FRIENDLY



FORMULATED WITHOUT
HARMFUL CHEMICALS

TrueColour™
Technology+

MULTICOLOR
Tintable

*All colours reproduced are shown as close to actual paint colours as modern printing techniques allow. Colour appearance or finishing will vary according to amount of coats, style of strokes applied and individual painting methods. Where colour matching is critical, an applied sample is recommended.

Base colour **5276 Near Dusk**
Glazed over with **10491 Antique Gold**



Base colour **4164 Blue Lagoon**
Glazed over with **10491 Antique Gold**



Base colour **6243 Classic Green**
Glazed over with **10491 Antique Gold**



Base colour **2615 Patisserie**
Glazed over with **Gold**



Base colour **2456 Maple Salmon**
Glazed over with **10491 Antique Gold**



Base colour **3185 Elderberry Crush**
Glazed over with **Gold**



Base colour **4214 Taaluk**
Glazed over with **Gold**



Base colour **4525 Violet Sea**
Glazed over with **10491 Antique Gold**

Paint effortlessly with Majestic Design's DIY-friendly concept products which are easy to replicate and achieve. To learn more, just scan the QR code printed at the back of this book or refer to our step-by-step guide. It's that easy!

*All colours reproduced are shown as close to actual paint colours as modern printing techniques allow. Colour appearance or finishing will vary according to amount of coats, style of strokes applied and individual painting methods. Where colour matching is critical, an applied sample is recommended.



Base colour **1032 Iron Grey**
Glazed over with **Gold**



Base colour **8325 Wondergrass**
Glazed over with **10491 Antique Gold**



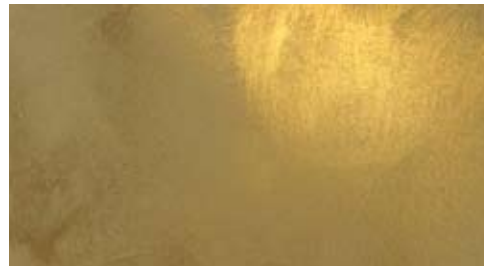
Base colour **5180 Chini**
Glazed over with **10491 Antique Gold**



Base colour **7052 Green Smoke**
Glazed over with **10491 Antique Gold**



Base colour **6243 Classic Green**
Glazed over with **10491 Antique Gold**



Base colour **8284 Olive**
Glazed over with **10491 Antique Gold**



Base colour **4096 Bayside Blue**
Glazed over with **Gold**



Base colour **6191 Beryl Charm**
Glazed over with **10491 Antique Gold**



Base colour **4744 Sophisticated Blue**
Glazed over with **10491 Antique Gold**



Base colour **0562 Monsoon Cloud**
Glazed over with **Gold**



Base colour **4477 Deco Blue**
Glazed over with **Gold**



Base colour **5276 Near Dusk**
Glazed over with **10491 Antique Gold**



Base colour **7040 Cypress**
Glazed over with **Gold**

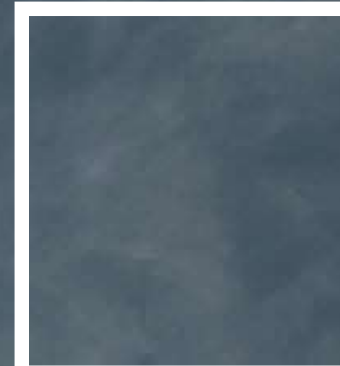


Base colour **2549 Roast Coffee**
Glazed over with **Gold**

*All colours reproduced are shown as close to actual paint colours as modern printing techniques allow. Colour appearance or finishing will vary according to amount of coats, style of strokes applied and individual painting methods. Where colour matching is critical, an applied sample is recommended.

Pearl

Stylish pearlescent finish that adds a lustrous and elegant touch. Inspired by the morning mist, Majestic Design Pearl's soothing palette of beautiful colours awaken your senses, and bring out the gracefulness of your home.

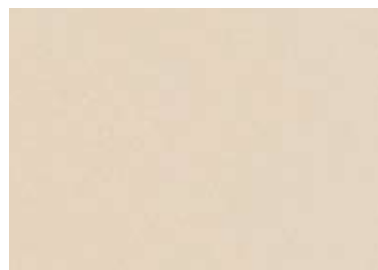


Base colour **5362 Fusion**
Glazed over with **6066 Nettuno**

Available range of colours for

Pearl

Create luxurious design walls with Pearl – a semi opaque wall finish, featuring 20 unique colours.



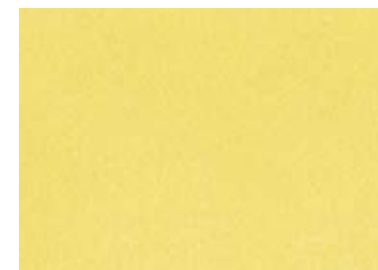
10139 Sabbia
Base colour **1019 Wheat**



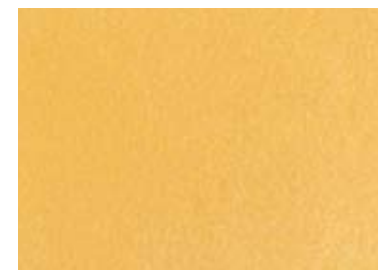
10138 Gioco
Base colour **1038 Smooth Ivory**



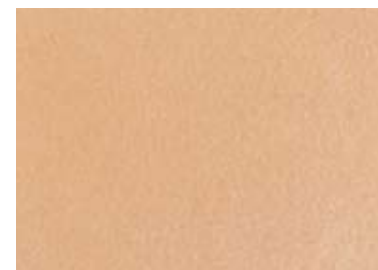
10475 Pastello
Base colour **1988 Fountains**



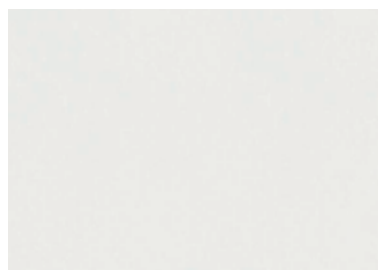
8373 Venere
Base colour **8245 Lemon Sorbet**



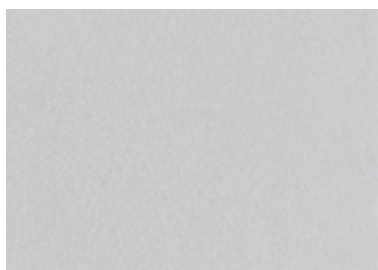
10137 Sole
Base colour **2206 Yellow Stone**



2834 Pesca
Base colour **2539 Pink Sand**



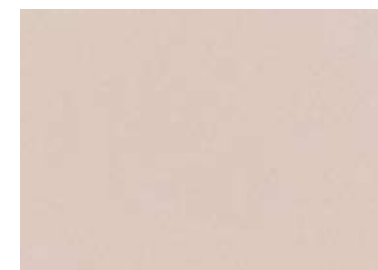
9958 Bianco
Base colour **9918 Morning Fog**



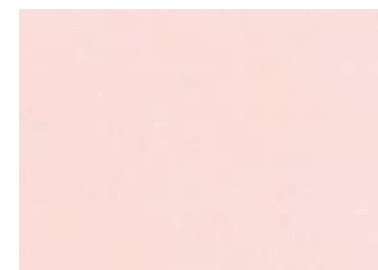
9959 Grigio
Base colour **0520 Empire**



9946 Gelato
Base colour **9911 Platinum**



2843 Violetto
Base colour **2594 Cotton Lace**



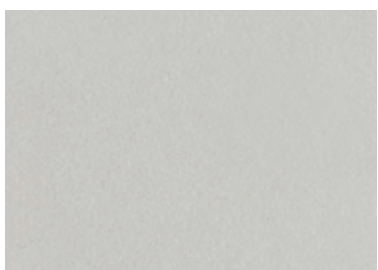
3319 Lilla
Base colour **3180 Rose Petals**



3280 Rosa
Base colour **3344 Rosiness**



3282 Ourjouan
Base colour **3327 Violetta**



8439 Nuvolo
Base colour **8117 Illusion**



7468 Bruno
Base colour **7214 Granite Stone**



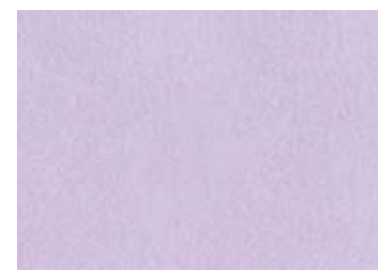
6066 Nettuno
Base colour **6267 Cupcake Green**



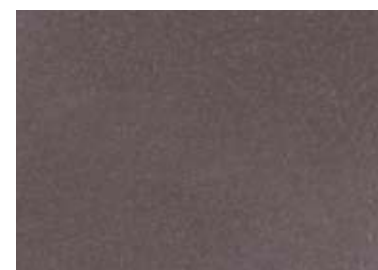
5324 Blentana
Base colour **5442 Calm**



4573 Morado
Base colour **4772 Transpire**



4706 Lavanda
Base colour **4448 Soft Lilac**



2677 Melanzana
Base colour **20008 Smoke Topaz**

The colours showcased here are combined with base colours for viewing and differentiation purposes only. (Note: *Majestic Design Prestige* & *Majestic Design Pearl* are semi-opaque). The colour combinations showcases here are recommended for Day Dream design. Please refer to step by step application guide at the end of this brochure.

Base colour **2993 Kilim**
Glazed over with **3319 Lilla**

With Majestic Design Pearl's beautiful palette of soothing colours, you can create bold or subtle looks through the many different techniques and combinations of high quality design paint and topcoat colours. Stains are easily wiped off too, leaving a stylish, luxurious and lustrous pearlescent effect to your wall as if painted only yesterday.

Base colour **10683 Cashmere**
Glazed over with **9958 Bianco**



Base colour **2615 Patisserie**
Glazed over with **3319 Lilla**



Base colour **2549 Roast Coffee**
Glazed over with **2677 Melanzana**



FEATURES



LOW ODOUR



DIY FRIENDLY



FORMULATED WITHOUT
HARMFUL CHEMICALS

TrueColour™+
Technology+

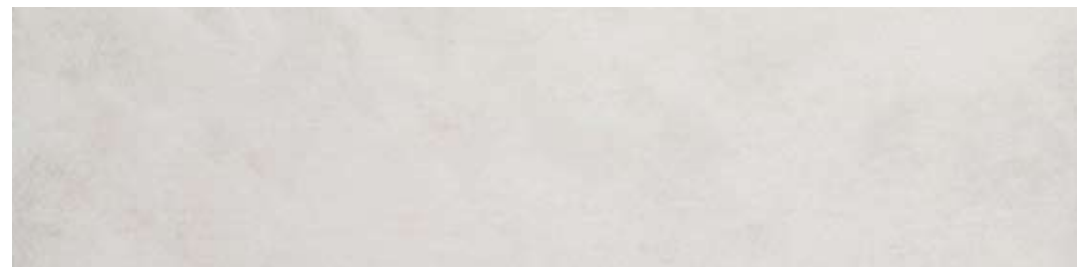
MULTICOLOR
Tintable



Base colour **4744 Sophisticated Blue**
Glazed over with **7468 Bruno**



Base colour **5180 Chini**
Glazed over with **5324 Blentana**



Base colour **4454 Thousand Nights**
Glazed over with **9958 Bianco**



Base colour **0001 White**
Glazed over with **8373 Venere**



Base colour **1155 Buttery Cream**
Glazed over with **6066 Nettuno**



Base colour **1832 Milky Way**
Glazed over with **10475 Pastello**



Base colour **1155 Buttery Cream**
Glazed over with **10139 Sabbia**



Base colour **1832 Milky Way**
Glazed over with **2834 Pesca**



Base colour **8054 Sunny Spot**
Glazed over with **8439 Nuvolo**



Base colour **1155 Buttery Cream**
Glazed over with **10137 Sole**



Base colour **2206 Yellow Stone**
Glazed over with **10138 Gioco**



Base colour **2561 Mountain Sunset**
Glazed over with **8373 Venere**



Base colour **2561 Mountain Sunset**
Glazed over with **10139 Sabbia**



Base colour **2456 Maple Salmon**
Glazed over with **9946 Gelato**

*All colours reproduced are shown as close to actual paint colours as modern printing techniques allow. Colour appearance or finishing will vary according to amount of coats, style of strokes applied and individual painting methods. Where colour matching is critical, an applied sample is recommended.



Base colour **1032 Iron Grey**
Dabbed with **7468 Bruno** and **5324 Blentana**



Base colour **2396 Tender Pink**
Glazed over with **3280 Rosa**



Base colour **1832 Milky Way**
Glazed over with **4706 Lavanda**



Base colour **0001 White**
Glazed over with **4706 Lavanda**



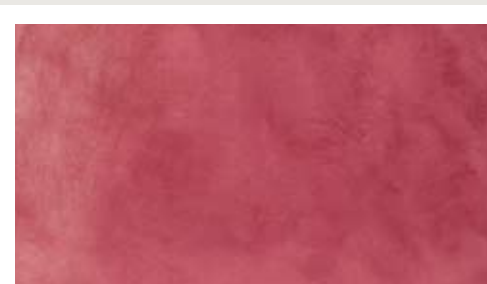
Base colour **5276 Near Dusk**
Glazed over with **4573 Morado**



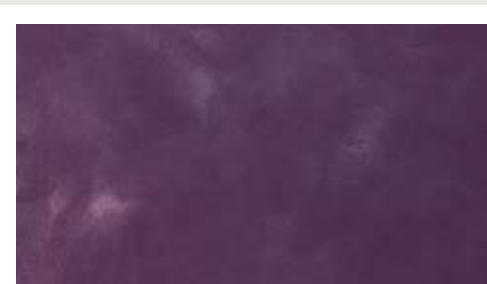
Base colour **4096 Bayside Blue**
Glazed over with **9959 Grigio**



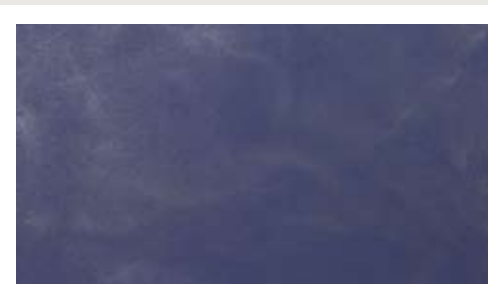
Base colour **2615 Patisserie**
Glazed over with **3319 Lilla**



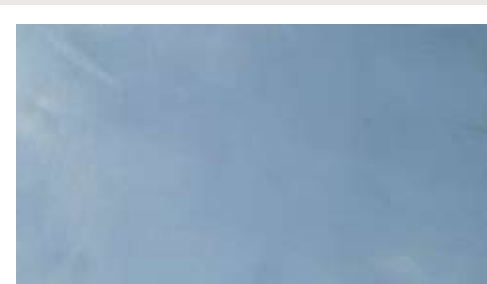
Base colour **2615 Patisserie**
Glazed over with **3282 Ourjouan**



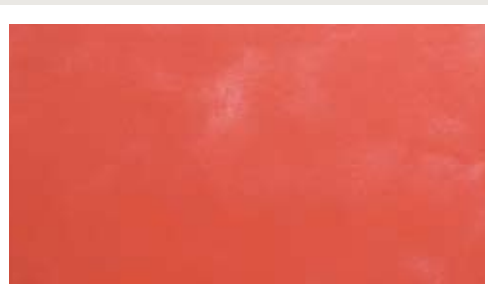
Base colour **4214 Taaluk**
Glazed over with **4573 Morado**



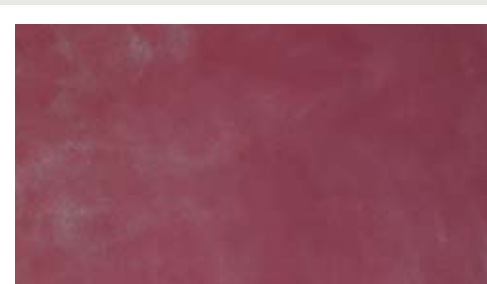
Base colour **4525 Violet Sea**
Glazed over with **7468 Bruno**



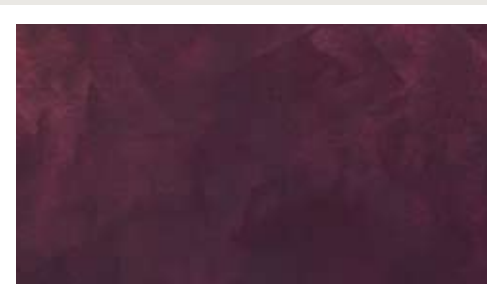
Base colour **4096 Bayside Blue**
Glazed over with **6066 Nettuno**



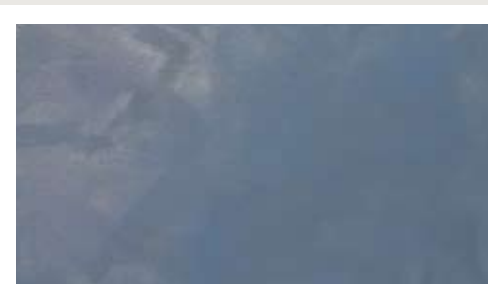
Base colour **2456 Maple Salmon**
Glazed over with **3280 Rosa**



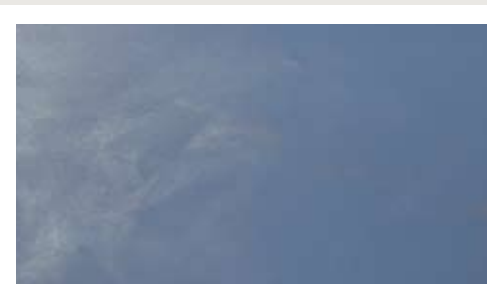
Base colour **3185 Elderberry Crush**
Glazed over with **8439 Nuvolo**



Base colour **0562 Monsoon Cloud**
Glazed over with **3282 Ourjouan**



Base colour **4164 Blue Lagoon**
Glazed over with **2834 Pesca**



Base colour **4164 Blue Lagoon**
Glazed over with **9959 Grigio**

For this Ocean Splash design, please refer to the step by step application guide at the end of this brochure.

Everyone can paint like a professional with Majestic Design's DIY-friendly concept products. It's so easy to replicate and achieve stunning designs on your walls!

To learn more, just scan the QR code printed at the back of this book or refer to our step-by-step guide. It's that easy!

*All colours reproduced are shown as close to actual paint colours as modern printing techniques allow. Colour appearance or finishing will vary according to amount of coats, style of strokes applied and individual painting methods. Where colour matching is critical, an applied sample is recommended.



Base colour **5168 Mermaid Green**
Glazed over with **3280 Rosa**



Base colour **4454 Thousand Nights**
Glazed over with **6066 Nettuno**



Base colour **5168 Mermaid Green**
Glazed over with **10475 Pastello**



Base colour **5276 Near Dusk**
Glazed over with **10138 Gioco**



Base colour **0001 White**
Glazed over with **6066 Nettuno**



Base colour **6243 Classic Green**
Glazed over with **6066 Nettuno**



Base colour **0001 White**
Glazed over with **5324 Blentana**



Base colour **6191 Beryl Charm**
Glazed over with **5324 Blentana**



Base colour **7037 Sour Onion**
Glazed over with **8373 Venere**



Base colour **8478 Pale Green**
Glazed over with **9959 Grigio**



Base colour **7040 Cypress**
Glazed over with **2834 Pesca**



Base colour **5362 Fusion**
Glazed over with **6066 Nettuno**



Base colour **7037 Sour Onion**
Glazed over with **5324 Blentana**



Base colour **6191 Beryl Charm**
Glazed over with **9959 Grigio**



Base colour **8325 Wondergrass**
Glazed over with **8439 Nuvolo**



Base colour **8478 Pale Green**
Glazed over with **8373 Venere**



Base colour **7040 Cypress**
Glazed over with **7468 Bruno**



Base colour **4744 Sophisticated Blue**
Glazed over with **5324 Blentana**

*All colours reproduced are shown as close to actual paint colours as modern printing techniques allow. Colour appearance or finishing will vary according to amount of coats, style of strokes applied and individual painting methods. Where colour matching is critical, an applied sample is recommended.



Base colour **7037 Sour Onion**
Glazed over with **10138 Gioco**



Base colour **1032 Iron Grey**
Glazed over with **9959 Grigio**



Base colour **10683 Cashmere**
Glazed over with **9958 Bianco**



Base colour **2132 Flax**
Glazed over with **10137 Sole**



Base colour **2993 Kilim**
Glazed over with **3319 Lilla**



Base colour **0562 Monsoon Cloud**
Glazed over with **7468 Bruno**



Base colour **8284 Olive**
Glazed over with **10475 Pastello**



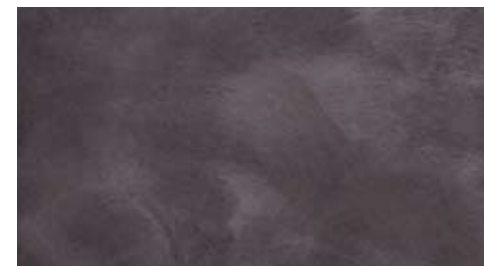
Base colour **1032 Iron Grey**
Glazed over with **3280 Rosa**



Base colour **1361 Cocoa Root**
Glazed over with **2843 Violetto**



Base colour **2132 Flax**
Glazed over with **3280 Rosa**



Base colour **2549 Roast Coffee**
Glazed over with **2677 Melanzana**



Base colour **4744 Sophisticated Blue**
Glazed over with **7468 Bruno**



Base colour **7052 Green Smoke**
Glazed over with **9959 Grigio**



Base colour **7052 Green Smoke**
Glazed over with **2677 Melanzana**



Base colour **1361 Cocoa Root**
Glazed over with **2677 Melanzana**



Base colour **2132 Flax**
Glazed over with **2677 Melanzana**



Base colour **2549 Roast Coffee**
Glazed over with **3282 Ourjouan**



Base colour **4744 Sophisticated Blue**
Glazed over with **4573 Morado**

*All colours reproduced are shown as close to actual paint colours as modern printing techniques allow. Colour appearance or finishing will vary according to amount of coats, style of strokes applied and individual painting methods. Where colour matching is critical, an applied sample is recommended.

Starry Night | Majestic Design Diamond



SURFACE PREPARATION

- Surfaces to be painted must be sound, dry, clean, free from dust, oil, grease, flaking, chalking and dirt. All loose, defective paints and laitance must be removed.
- Repair structural cracks. Patch-up uneven surfaces and minor cracks by using suitable concrete putty or fillers.
- Light sanding with suitable abrasive material is recommended before application to smoothen the surface.
- Any resulting dust/loose particles must be removed.
- Clean and dry the surface thoroughly prior to painting.

STEP BY STEP APPLICATION

Spray application

Tools needed: **Spray**



STEP 1:
Apply 1 coat of Majestic Primer onto the surface.



STEP 2:
Apply 2 coats of selected Majestic base colour by roller. Allow it to dry.



STEP 3:
Empty the contents of Majestic Design Diamond Powder from the small pack into every 1L of Majestic Design Diamond and mix well.



STEP 4:
Using spray, evenly spray Majestic Design Diamond. Repeat another coat after allowing the first coat to dry.

Brush application

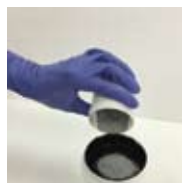
Tools needed: **brush**



STEP 1:
Apply 1 coat of Majestic Primer onto the surface.



STEP 2:
Apply 2 coats of selected Majestic base colour by roller. Allow it to dry.



STEP 3:
Empty the contents of Majestic Design Diamond Powder from the small pack into every 1L of Majestic Design Diamond and mix well.



STEP 4:
Using a brush, apply 2 coats of Majestic Design Pearl. Use random criss-cross strokes for desirable effects and natural textured finish.



*All colours reproduced are shown as close to actual paint colours as modern printing techniques allow. Colour appearance or finishing will vary according to amount of coats, style of strokes applied and individual painting methods. Where colour matching is critical, an applied sample is recommended.

Learn how to create this design by scanning the QR code.

Shimmering Clouds



SURFACE PREPARATION

- Surfaces to be painted must be sound, dry, clean, free from dust, oil, grease, flaking, chalking and dirt. All loose, defective paints and laitance must be removed.
- Repair structural cracks. Patch-up uneven surfaces and minor cracks by using suitable concrete putty or fillers.
- Light sanding with suitable abrasive material is recommended before application to smoothen the surface.
- Any resulting dust/loose particles must be removed.
- Clean and dry the surface thoroughly prior to painting.

STEP BY STEP APPLICATION

Tools needed: **Sponge**



STEP 1:
Apply 1 coat of Majestic Primer onto the surface.



STEP 2:
Apply 2 coats of selected Majestic base colour by roller. Allow it to dry.



STEP 3:
Using the sponge, paint Majestic Design Prestige or Majestic Design Pearl in a circular motion. Randomly glaze over 1 coat of the design paint, according to desired colour combination.

Recommended colours:

Please refer to the colour combinations recommended under Majestic Design Pearl & Majestic Design Prestige sections.

Day Dream



SURFACE PREPARATION

- Surfaces to be painted must be sound, dry, clean, free from dust, oil, grease, flaking, chalking and dirt. All loose, defective paints and laitance must be removed.
- Repair structural cracks. Patch-up uneven surfaces and minor cracks by using suitable concrete putty or fillers.
- Light sanding with suitable abrasive material is recommended before application to smoothen the surface.
- Any resulting dust/loose particles must be removed.
- Clean and dry the surface thoroughly prior to painting.

STEP BY STEP APPLICATION

Tools needed: **Trowel/scrapper**



STEP 1:
Apply 1 coat of Majestic Primer onto the surface.



STEP 2:
Apply 2 coats of selected Majestic base colour by roller. Allow it to dry.



STEP 3:
Using trowel / scrapper, evenly spread 1 layer of Majestic Design Pearl or Prestige. Wait until completely dry.



STEP 4:
Using trowel / scrapper, apply Majestic Design Pearl or Prestige in a random orientation till desired finishing is achieved.

Recommended colours:

Please refer to the colour combinations showcased under Majestic Design Pearl – 20 available range of colours.

Learn how to create this design by scanning the QR code.



Ocean Splash



No. 57



Linen



Blissful Waters

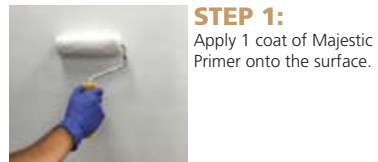


SURFACE PREPARATION

- Surfaces to be painted must be sound, dry, clean, free from dust, oil, grease, flaking, chalking and dirt. All loose, defective paints and laitance must be removed.
- Repair structural cracks. Patch-up uneven surfaces and minor cracks by using suitable concrete putty or fillers.
- Light sanding with suitable abrasive material is recommended before application to smoothen the surface.
- Any resulting dust/loose particles must be removed.
- Clean and dry the surface thoroughly prior to painting.

STEP BY STEP APPLICATION

Tools needed: **Sea Sponge**



STEP 1:
Apply 1 coat of Majestic Primer onto the surface.



STEP 2:
Apply 2 coats of selected Majestic base colour by roller. Wait until completely dry.



STEP 3:
Coat the sea sponge with a thin layer of Majestic Design Pearl and dab randomly onto the wall. Creating your own design pattern or effect is recommended if desirable.



STEP 4:
Repeat this motion for the desired effect with Majestic Design Prestige or a different colour.

Recommended colours:

Majestic base colour: **8284 Olive**,
Majestic Design Pearl: **2677 Melanzana**, Majestic Design Prestige: **10491 Antique Gold**

*All colours reproduced are shown as close to actual paint colours as modern printing techniques allow. Colour appearance or finishing will vary according to amount of coats, style of strokes applied and individual painting methods. Where colour matching is critical, an applied sample is recommended.

Tools needed: **thick bristled brush**



STEP 1:
Apply 1 coat of Majestic Primer onto the surface.



STEP 2:
Using roller, apply 2 coats of Majestic range base colour. Wait until completely dry.



STEP 3:
Using a thick bristled brush, apply Majestic range base colour 2 very lightly in thin, vertical and horizontal motions. Wait until completely dry.



STEP 4:
Repeat Step 3 with Majestic Design Pearl.



STEP 5:
Repeat Steps 3 & 4 till desired finishing is achieved.

Recommended colours:

Majestic base colour: **4116 Corvus Black**, Majestic base colour 2: **0001 White**,
Majestic Design Pearl: **7468 Bruno**

Learn how to create this design by scanning the QR code.



SURFACE PREPARATION

- Surfaces to be painted must be sound, dry, clean, free from dust, oil, grease, flaking, chalking and dirt. All loose, defective paints and laitance must be removed.
- Repair structural cracks. Patch-up uneven surfaces and minor cracks by using suitable concrete putty or fillers.
- Light sanding with suitable abrasive material is recommended before application to smoothen the surface.
- Any resulting dust/loose particles must be removed.
- Clean and dry the surface thoroughly prior to painting.

STEP BY STEP APPLICATION

Tools needed: **thick bristled brush**



STEP 1:
Apply 1 coat of Majestic Primer onto the surface. Then apply 2 coats of Majestic Perfect Beauty & Care with roller. Wait until completely dry.



STEP 2:
With roller apply thick layer of Majestic Perfect Beauty and Care. Using a thick bristled brush, create horizontal lines. Wait until completely dry.



STEP 3:
With roller apply another thick layer of Majestic Perfect Beauty and Care. Using same brush, create vertical lines. Wait until completely dry.



STEP 4:
Using roller, apply thin layer of Majestic Design Pearl. Use a clean bristled brush to create similar vertical lines as in Step 3. Wait until completely dry.

Recommended colours:

Majestic Perfect Beauty and Care: **0001 White**, Majestic Design Pearl: **9958 Bianco**

Tools needed: **Roller & plastic sheet**



STEP 1:
Apply 1 coat of Majestic Primer onto the surface. Then apply 2 coats of Majestic Perfect Beauty & Care with roller. Wait until completely dry.



STEP 2:
Working in a small area, using roller, apply Majestic Design Pearl in small random patches covering the entire surface.



STEP 3:
While the paint is still wet, pat the surface with a creased plastic sheet.



STEP 4:
Using the same plastic, roll and pat the surface for a second time, creating the illusion of water through another series of lines.



STEP 5:
Wait until completely dry.

Recommended colours:

Majestic base colour: **0001 White**
Majestic Design Pearl: **5323 Carico** or **5327 Pizzara**

Learn how to create this design by scanning the QR code.

