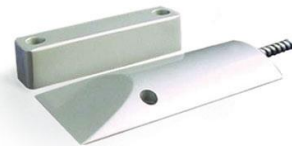


## DS-PD1-MC-RS

### Magnetic Contact

DS-PD1-MC-RS is a magnetic contact which special designed for the rolling door. It can detect the door opening and then gives an alarm to the panel by the NC output.



#### AVAILABLE MODEL

DS-PD1-MC-RS

#### SPECIFICATIONS

Model	DS-PD1-MC-RS
Shell material	Metal plating
Capacity (VDC)	≤100
Capacity (mA)	≤500
Contact scheme (NC\NO)	NC
Distance (mm)	≥65
Installation	Surface mounting
Dimension (L x W x H)	108mm x 40mm x 8mm (Master) 88mm x 20mm x 21mm (Slaver)
Weight (g)	215