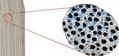


MBR Advantages

- >>> Low energy costs
- >>> High quality effluent
- >>> High flow rate, infrequent cleaning
- * Lower footprint/space
- * Advanced MBR / UF Technology
- * Minimal prescreening, easy operation



Pore Size:
0.06 micron (average)
0.1 micron (Maximum)

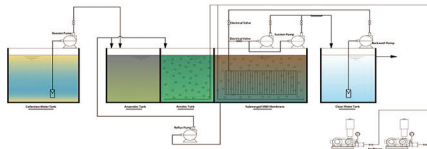


Electron microscope view of the
UF Membrane surface

Membrane Element Description

Model	ONE-RMBR-1010	ONE-RMBR-1520
Hollow Fibers Material	PVDF and PET Non-woven fiber	PVDF and PET Non-woven fiber
Dimensions(Width*Thickness*Height):	571×45×815	571×45×1535
Connect size	0032 UPVC	0032 UPVC
Effective Membrane Area(m2)	10	20
Hollow fibers diameter(mm)	0.6/1.2	0.6/1.2
Nominal pore diameter(μm)	0.05	0.05
Design flow rate (L/hr)	100~250 (Sewage desgin 150L/Hr)	200~500 (Sewage desgin 300L/Hr)
Filtration Method	Outside-in	Outside-in
Potting material	Epoxy resin	Epoxy resin
Tube material	ABS	ABS
MBR Tank depth	Above 1.8m (Suitable for mobile system)	Above 3m

Classic Submerged Membrane in Wastewater Treatment Process



Membrane Modular According to your project requirement

Installed photo as reference



MBR Membrane Input Raw Water Conditions

Item	Specification
Working Temperature	5--45℃
PH	5--9
Input SS (Solid Diameter)	≤2mm
Oil Grease	<2mg/L
Hard (CaCO ₃ mg/L)	Too much CaCO ₃ will harden the hollow fibers
Filtration type	Outside-in
Max.Operating pressure	0.35MPa
Max.Air Pressure	0.15MPa
Operating Pressure	0.2MPa(Suggested)
Interval Working	7 minutes working 1-minute stop
Air Stirring Clean	1.5---3 m³/Hour.Unit



Submerged MBR Membrane Application

- Urban/Rural Sewage
- In-building Wastewater Recycling System
- City Water Filtration
- Industry Wastewater treatment

Packaged Wastewater Treatment Plants

- * Reduce onsite construction costs with fast and simple installation
- * Ideal flows between 1 ton to 200 tons wastewater capacity per day
- * High quality effluent
- * Easy operation and maintenance requires minimal operator supervision
- * Meets or exceeds your local regulatory requirements



Hinada provide a truly integrated solution to you, with dedicated technical support every step of the way

- * Wastewater Treatment Process Design
- * Equipments manufacturing and supply
- * Installation , Commissioning
- * Test & Training

