

# SBT CATEGORY

PRO-E COLLET CHUCK	D-3~5
UT COLLET CHUCK	D-6~8
ER COLLET CHUCK	D-9~11
ER COLLET CHUCK [M TYPE]	D-12~13
SKX COLLET CHUCK	D-14~16
SK3 COLLET CHUCK	D-17~18
SKS COLLET CHUCK	D-19~21
SBL SLIM-FIT COLLET CHUCK	D-22~23
SBLC SLIM-FIT COLLET CHUCK	D-24~25
EBL SLIM-FIT COLLET CHUCK	D-26
HBL SLIM-FIT COLLET CHUCK	D-27
MLD MULTI-LOCK MILLING CHUCK	D-28~30
SLN SIDE LOCK END MILL HOLDER	D-31~35
SLN SIDE LOCK END MILL HOLDER [JIS TYPE]	D-36~37
FACE MILL ARBOR [FMA/FMB TYPE]	D-38~42
FACE MILL ARBOR [FMC TYPE]	D-43~45
SMA FACE MILL ARBOR	D-46
QTC QUICK CHANGE TAPPING CHUCK	D-47
SCA SIDE CUTTER ADAPTER	D-48~49
SOM SCREWED END MILL HOLDER	D-50
MORSE TAPER ADAPTER	D-51~52
ADAPTER	D-53
BLANK	D-54

# REFERENCE DETAILS

▶ Taper tolerance < **AT3**

▶ Hardness > **HRC 56°**

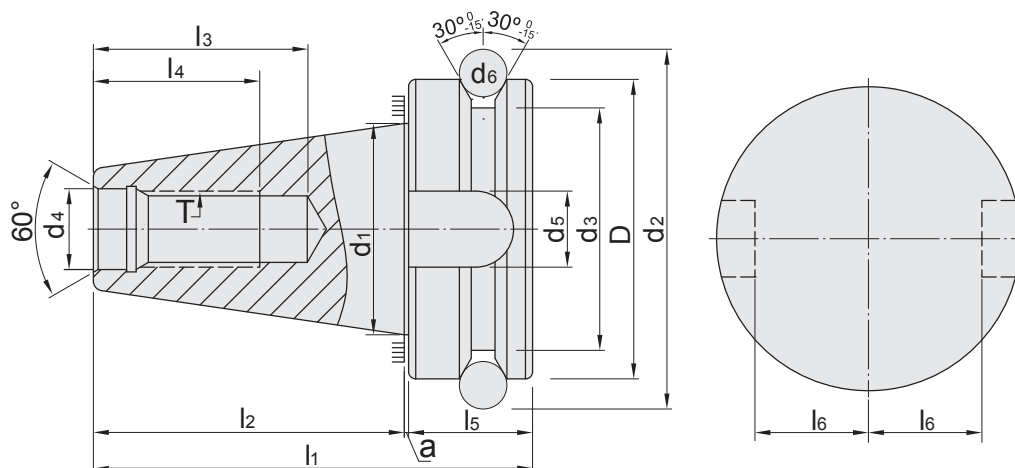
▶ Surface roughness: Ra < **0.25 μm**

▶ Roundness < **0.8 μm**

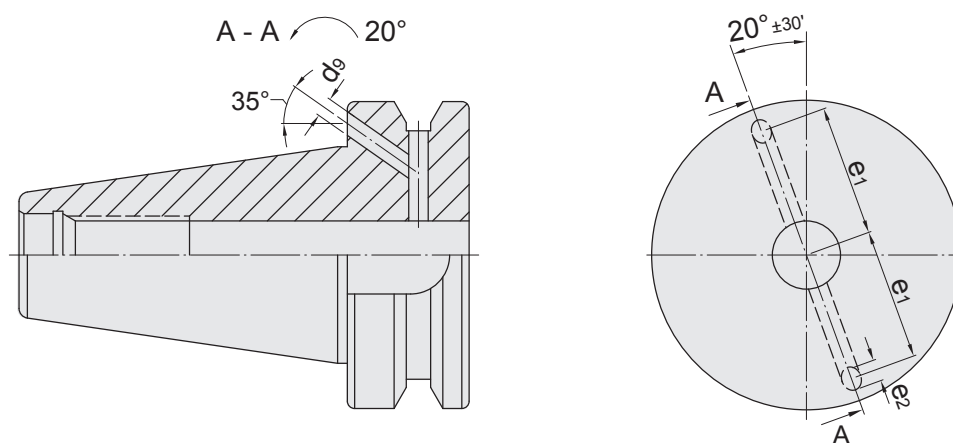
▶ Carbon depth > **0.8mm**

▶ The shank has pre-balance at G6.3, and can provide precision balance at G2.5.  
It can be ordered by request.

## SBT A



## SBT AD+B

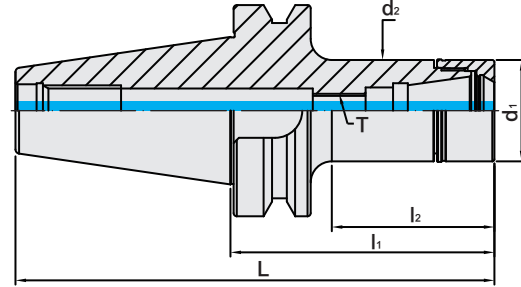


SBT	D h8	d1	d2	d3	d4 H8	d5 H12	d6	d9 H12	a 0 -0.005
30	46	31.75	56.14	38	12.5	16.1	8	-	1
40	63	44.45	75.679	53	17	16.1	10	4	1
50	100	69.85	119.02	85	25	25.7	15	6	1.5
SBT	l1	l2 ±0.2	l3 min	l4 min	l5	l6 0 -0.2	e1 ±0.1	e2 MAX	T 6H
30	70.4	48.4	34	24	21	16	-	-	M12 x 1.75P
40	92.4	65.4	43	30	26	22.6	27	5	M16 x 2.0P
50	139.8	101.8	62	45	36.5	35.4	42	7	M24 x 3.0P

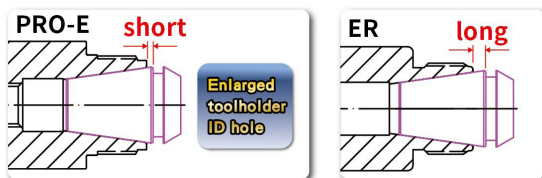
# SBT / PRO-E COLLET CHUCK

Dual  
DRIVE+

SBT / PRO-E 法蘭加厚型筒夾式刀桿



MODEL NO.	TYPE	L	l <sub>1</sub>	l <sub>2</sub>	d <sub>1</sub>	d <sub>2</sub>	T	SIZE RANGE	WEIGHT (KGS)
5025-529-016-070	SBT30 x PRO-E16 - 70	118.4	70	43	30	30	M10 x 1.5P	1 ~ 10	0.58
5025-529-016-100	SBT30 x PRO-E16 - 100	148.4	100	73	30	30	M10 x 1.5P	1 ~ 10	0.73
5025-529-016-125	SBT30 x PRO-E16 - 125	173.4	125	98	30	30	M10 x 1.5P	1 ~ 10	0.85
5025-529-016-150	SBT30 x PRO-E16 - 150	198.4	150	123	30	30	M10 x 1.5P	1 ~ 10	0.97
5025-529-020-070	SBT30 x PRO-E20 - 70	118.4	70	44	35	35	M12 x 1.75P	1 ~ 13	0.65
5025-529-020-100	SBT30 x PRO-E20 - 100	148.4	100	74	35	35	M12 x 1.75P	1 ~ 13	0.85
5025-529-020-125	SBT30 x PRO-E20 - 125	173.4	125	99	35	35	M12 x 1.75P	1 ~ 13	1.02
5025-529-020-150	SBT30 x PRO-E20 - 150	198.4	150	124	35	35	M12 x 1.75P	1 ~ 13	1.19
5025-529-025-070	SBT30 x PRO-E25 - 70	118.4	70	47.5	42	42	M16 x 2.0P	1 ~ 16	0.73
5025-529-025-100	SBT30 x PRO-E25 - 100	148.4	100	77.5	42	42	M16 x 2.0P	1 ~ 16	1.03
5025-529-025-125	SBT30 x PRO-E25 - 125	173.4	125	102.5	42	42	M16 x 2.0P	1 ~ 16	1.28
5025-529-025-150	SBT30 x PRO-E25 - 150	198.4	150	127.5	42	42	M16 x 2.0P	1 ~ 16	1.53
5025-529-032-070	SBT30 x PRO-E32 - 70	118.4	70	47.5	50	50	M16 x 2.0P	2 ~ 20	0.79
5025-529-032-100	SBT30 x PRO-E32 - 100	148.4	100	77.5	50	50	M16 x 2.0P	2 ~ 20	1.22
5025-529-032-125	SBT30 x PRO-E32 - 125	173.4	125	102.5	50	50	M16 x 2.0P	2 ~ 20	1.58
5025-529-032-150	SBT30 x PRO-E32 - 150	198.4	150	127.5	50	50	M16 x 2.0P	2 ~ 20	1.95



**Features:**

- ▶ Superior interchangeability with ER collets.
- ▶ Assembled with ER spring collet (15µm, 10µm, 5µm), ERS metallic sealed collet (10µm, 5µm, 3µm) and ERS coolant FOD collet (10µm, 5µm, 3µm).
- ▶ The design of enlarged holder ID hole optimizes the coverage of ER collet, shortens the tool overhanging length, and improves runout accuracy and machining stability.
- ▶ The design of straight parts above and below the thread makes PRO-E tool holders have better contact with clamping nuts to achieve higher runout accuracy.
- ▶ PRO-E nuts without slots reduce the wind shear at high speed.

**Product information:**

- ▶ Balance: G2.5 25,000 rpm. Higher balancing grade and revolution can be done upon request but additional charge is needed.
- ▶ AD+B type is available, please inform us when making an order.
- ▶ SBT30 tool holders aer without coolant supply over collars.

**Standard Accessory: • NUT**

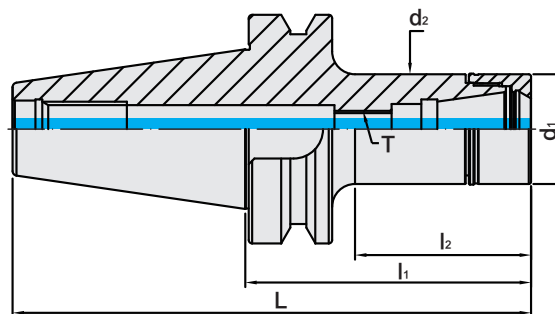
Collet	Nut	Pull Stud	Preset Screw	Spanner	Torque Wrench Adapter (Pull Stud)	Spanner (Pull Stud)
P.W-11~34	P.W-54	P.W-67~68	P.W-107	P.W-75、77、81	P.W-78	P.W-82



# SBT / PRO-E COLLET CHUCK

Dual  
DRIVE+

SBT / PRO-E 法蘭加厚型筒夾式刀桿



MODEL NO.	TYPE	L	l <sub>1</sub>	l <sub>2</sub>	d <sub>1</sub>	d <sub>2</sub>	T	SIZE RANGE	WEIGHT (KGS)
5026-529-016-070	SBT40 x PRO-E16 - 70	135.4	70	38	30	30	M10 x 1.5P	1 ~ 10	1.14
5026-529-016-100	SBT40 x PRO-E16 - 100	165.4	100	63	30	30	M10 x 1.5P	1 ~ 10	1.28
5026-529-016-125	SBT40 x PRO-E16 - 125	190.4	125	88	30	30	M10 x 1.5P	1 ~ 10	1.38
5026-529-016-150	SBT40 x PRO-E16 - 150	215.4	150	113	30	30	M10 x 1.5P	1 ~ 10	1.49
5026-529-016-200	SBT40 x PRO-E16 - 200	265.4	200	163	30	30	M10 x 1.5P	1 ~ 10	1.70
5026-529-016-250	SBT40 x PRO-E16 - 250	315.4	250	213	30	30	M10 x 1.5P	1 ~ 10	1.90
5026-529-020-070	SBT40 x PRO-E20 - 70	135.4	70	35	35	35	M12 x 1.75P	1 ~ 13	1.19
5026-529-020-100	SBT40 x PRO-E20 - 100	165.4	100	65	35	35	M12 x 1.75P	1 ~ 13	1.38
5026-529-020-125	SBT40 x PRO-E20 - 125	190.4	125	90	35	35	M12 x 1.75P	1 ~ 13	1.54
5026-529-020-150	SBT40 x PRO-E20 - 150	215.4	150	115	35	35	M12 x 1.75P	1 ~ 13	1.69
5026-529-020-200	SBT40 x PRO-E20 - 200	265.4	200	165	35	35	M12 x 1.75P	1 ~ 13	2.00
5026-529-020-250	SBT40 x PRO-E20 - 250	315.4	250	215	35	35	M12 x 1.75P	1 ~ 13	2.30
5026-529-025-070	SBT40 x PRO-E25 - 70	135.4	70	40	42	42	M16 x 2.0P	1 ~ 16	1.26
5026-529-025-100	SBT40 x PRO-E25 - 100	165.4	100	70	42	42	M16 x 2.0P	1 ~ 16	1.54
5026-529-025-125	SBT40 x PRO-E25 - 125	190.4	125	95	42	42	M16 x 2.0P	1 ~ 16	1.78
5026-529-025-150	SBT40 x PRO-E25 - 150	215.4	150	120	42	42	M16 x 2.0P	1 ~ 16	2.02
5026-529-025-200	SBT40 x PRO-E25 - 200	265.4	200	170	42	42	M16 x 2.0P	1 ~ 16	2.49
5026-529-025-250	SBT40 x PRO-E25 - 250	315.4	250	220	42	42	M16 x 2.0P	1 ~ 16	2.94
5026-529-032-070	SBT40 x PRO-E32 - 70	135.4	70	40	50	50	M16 x 2.0P	2 ~ 20	1.31
5026-529-032-100	SBT40 x PRO-E32 - 100	165.4	100	70	50	50	M16 x 2.0P	2 ~ 20	1.73
5026-529-032-125	SBT40 x PRO-E32 - 125	190.4	125	95	50	50	M16 x 2.0P	2 ~ 20	2.08
5026-529-032-150	SBT40 x PRO-E32 - 150	215.4	150	120	50	50	M16 x 2.0P	2 ~ 20	2.43
5026-529-032-200	SBT40 x PRO-E32 - 200	265.4	200	170	50	50	M16 x 2.0P	2 ~ 20	3.13
5026-529-032-250	SBT40 x PRO-E32 - 250	315.4	250	220	50	50	M16 x 2.0P	2 ~ 20	3.81

### Features:

- ▶ Superior interchangeability with ER collets.
- ▶ Assembled with ER spring collet (15µm, 10µm, 5µm), ERS metallic sealed collet (10µm, 5µm, 3µm) and ERS coolant FOD collet (10µm, 5µm, 3µm).
- ▶ The design of enlarged holder ID hole optimizes the coverage of ER collet, shortens the tool overhanging length, and improves runout accuracy and machining stability.
- ▶ The design of straight parts above and below the thread makes PRO-E tool holders have better contact with clamping nuts to achieve higher runout accuracy.
- ▶ PRO-E nuts without slots reduce the wind shear at high speed.

### Product information:

- ▶ Balance: G2.5 25,000 rpm. Higher balancing grade and revolution can be done upon request but additional charge is needed.
- ▶ AD+B type is available, please inform us when making an order.

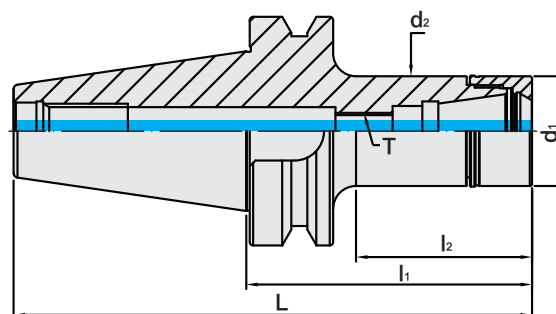
### Standard Accessory: • NUT

Collet	Nut	Pull Stud	Preset Screw	Spanner	Torque Wrench Adapter (Pull Stud)	Spanner (Pull Stud)
P.W-11~34	P.W-54	P.W-67~68	P.W-107	P.W-75、77、81	P.W-78	P.W-82

# SBT / PRO-E COLLET CHUCK

Dual  
DRIVE+

SBT / PRO-E 法蘭加厚型筒夾式刀桿



MODEL NO.	TYPE	L	l <sub>1</sub>	l <sub>2</sub>	d <sub>1</sub>	d <sub>2</sub>	T	SIZE RANGE	WEIGHT (KGS)
5027-529-016-070	SBT50 x PRO-E16 - 70	171.8	70	30	30	30	M10 x 1.5P	1~10	3.68
5027-529-016-100	SBT50 x PRO-E16 - 100	201.8	100	52	30	30	M10 x 1.5P	1~10	3.78
5027-529-016-125	SBT50 x PRO-E16 - 125	226.8	125	77	30	30	M10 x 1.5P	1~10	3.92
5027-529-016-150	SBT50 x PRO-E16 - 150	251.8	150	102	30	30	M10 x 1.5P	1~10	4.03
5027-529-016-200	SBT50 x PRO-E16 - 200	301.8	200	147	30	30	M10 x 1.5P	1~10	4.27
5027-529-020-070	SBT50 x PRO-E20 - 70	171.8	70	31	35	35	M12 x 1.75P	1~13	3.70
5027-529-020-100	SBT50 x PRO-E20 - 100	201.8	100	52	35	35	M12 x 1.75P	1~13	3.86
5027-529-020-125	SBT50 x PRO-E20 - 125	226.8	125	77	35	35	M12 x 1.75P	1~13	4.06
5027-529-020-150	SBT50 x PRO-E20 - 150	251.8	150	102	35	35	M12 x 1.75P	1~13	4.22
5027-529-020-200	SBT50 x PRO-E20 - 200	301.8	200	147	35	35	M12 x 1.75P	1~13	4.56
5027-529-025-070	SBT50 x PRO-E25 - 70	171.8	70	31	42	42	M16 x 2.0P	1~16	3.74
5027-529-025-100	SBT50 x PRO-E25 - 100	201.8	100	52	42	42	M16 x 2.0P	1~16	4.00
5027-529-025-125	SBT50 x PRO-E25 - 125	226.8	125	77	42	42	M16 x 2.0P	1~16	4.20
5027-529-025-150	SBT50 x PRO-E25 - 150	251.8	150	102	42	42	M16 x 2.0P	1~16	4.40
5027-529-025-200	SBT50 x PRO-E25 - 200	301.8	200	152	42	42	M16 x 2.0P	1~16	4.80
5027-529-025-250	SBT50 x PRO-E25 - 250	351.8	250	197	42	42	M16 x 2.0P	1~16	5.24
5027-529-032-070	SBT50 x PRO-E32 - 70	171.8	70	31	50	50	M16 x 2.0P	2~20	3.77
5027-529-032-100	SBT50 x PRO-E32 - 100	201.8	100	52	50	50	M16 x 2.0P	2~20	4.17
5027-529-032-125	SBT50 x PRO-E32 - 125	226.8	125	77	50	50	M16 x 2.0P	2~20	4.48
5027-529-032-150	SBT50 x PRO-E32 - 150	251.8	150	102	50	50	M16 x 2.0P	2~20	4.79
5027-529-032-200	SBT50 x PRO-E32 - 200	301.8	200	152	50	50	M16 x 2.0P	2~20	5.42
5027-529-032-250	SBT50 x PRO-E32 - 250	351.8	250	197	50	50	M16 x 2.0P	2~20	6.08
5027-529-032-300	SBT50 x PRO-E32 - 300	401.8	300	247	50	50	M16 x 2.0P	2~20	6.70
5027-529-032-350	SBT50 x PRO-E32 - 350	451.8	350	297	50	50	M16 x 2.0P	2~20	7.32

**Features:**

- ▶ Superior interchangeability with ER collets.
- ▶ Assembled with ER spring collet (15µm, 10µm, 5µm), ERS metallic sealed collet (10µm, 5µm, 3µm) and ERS coolant FOD collet (10µm, 5µm, 3µm).
- ▶ The design of enlarged holder ID hole optimizes the coverage of ER collet, shortens the tool overhanging length, and improves runout accuracy and machining stability.
- ▶ The design of straight parts above and below the thread makes PRO-E tool holders have better contact with clamping nuts to achieve higher runout accuracy.
- ▶ PRO-E nuts without slots reduce the wind shear at high speed.

**Product information:**

- ▶ Balance: G2.5 25,000 rpm. Higher balancing grade and revolution can be done upon request but additional charge is needed.
- ▶ AD+B type is available, please inform us when making an order.

**Standard Accessory: • NUT**

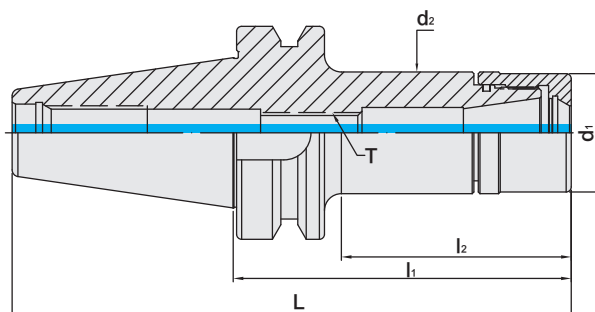
Collet	Nut	Pull Stud	Preset Screw	Spanner	Torque Wrench Adapter (Pull Stud)	Spanner (Pull Stud)
P.W-11~34	P.W-54	P.W-67~68	P.W-107	P.W-75、77、81	P.W-78	P.W-82



# SBT / UT COLLET CHUCK



## SBT / UT 法蘭加厚型立銑刀夾頭



TW PAT NO. M298033  
 TW PAT NO. M311791  
 J P PAT NO. 3128766  
 K R PAT NO. 20-0433603  
 C N PAT NO. ZL200620132661.0  
 C H PAT NO. 696550  
 T R PAT NO. TR 2007 02942 Y  
 I T PAT NO. N.0000266731

MODEL NO.	TYPE	L	l <sub>1</sub>	l <sub>2</sub>	d <sub>1</sub>	d <sub>2</sub>	T	SIZE RANGE	WEIGHT (KGS)
5025-753-016-070	SBT30 x UT16 - 70	118.4	70	43	30	30	M10 x 1.5P	1 ~ 10	0.58
5025-753-016-100	SBT30 x UT16 - 100	148.4	100	73	30	30	M10 x 1.5P	1 ~ 10	0.73
5025-753-016-125	SBT30 x UT16 - 125	173.4	125	98	30	30	M10 x 1.5P	1 ~ 10	0.85
5025-753-016-150	SBT30 x UT16 - 150	198.4	150	123	30	30	M10 x 1.5P	1 ~ 10	0.97
5025-753-020-070	SBT30 x UT20 - 70	118.4	70	47	35	36	M12 x 1.75P	1 ~ 13	0.64
5025-753-020-100	SBT30 x UT20 - 100	148.4	100	77	35	36	M12 x 1.75P	1 ~ 13	0.85
5025-753-020-125	SBT30 x UT20 - 125	173.4	125	102	35	36	M12 x 1.75P	1 ~ 13	1.03
5025-753-020-150	SBT30 x UT20 - 150	198.4	150	127	35	36	M12 x 1.75P	1 ~ 13	1.21
5025-753-025-070	SBT30 x UT25 - 70	118.4	70	46	42	42	M16 x 2.0P	1 ~ 16	0.70
5025-753-025-100	SBT30 x UT25 - 100	148.4	100	76	42	42	M16 x 2.0P	1 ~ 16	1.00
5025-753-025-150	SBT30 x UT25 - 150	198.4	150	126	42	42	M16 x 2.0P	1 ~ 16	1.49
5025-753-032-070	SBT30 x UT32 - 70	118.4	70	48	48	48	M16 x 2.0P	2 ~ 20	0.71
5025-753-032-100	SBT30 x UT32 - 100	148.4	100	78	48	48	M16 x 2.0P	2 ~ 20	1.08
5025-753-032-125	SBT30 x UT32 - 125	173.4	125	103	48	48	M16 x 2.0P	2 ~ 20	1.42
5025-753-032-150	SBT30 x UT32 - 150	198.4	150	128	48	48	M16 x 2.0P	2 ~ 20	1.75

### Features:

- ▶ The deeper holder gauge line optimizes the coverage of ER spring collet and increases machining stability.
- ▶ UT clamping nut is designed without eccentric. Used with ER and ERE spring collets.
- ▶ The O-ring design on the front of holders prevents chips and coolant from entering holders.
- ▶ UT nuts without slots reduce the wind shear at high speed.

### Product information:

- ▶ SBT30 tool holders are without coolant supply over collars.

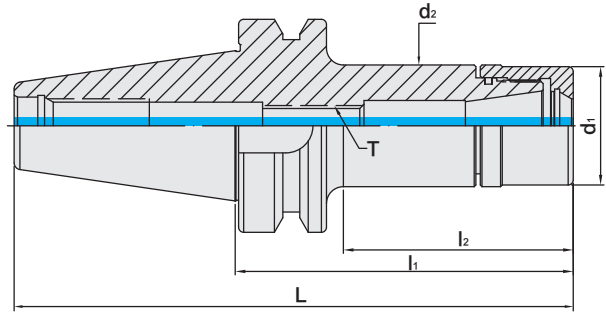
### Standard Accessory: • NUT

Collet	Nut	Pull Stud	Preset Screw	Spanner	Torque Wrench Adapter (Pull Stud)	Spanner (Pull Stud)
P.W-11~14	P.W-55	P.W-67~68	P.W-107	P.W-75、77、81	P.W-78	P.W-82

# SBT / UT COLLET CHUCK



## SBT / UT 法蘭加厚型立銑刀夾頭



TW PAT NO. M298033  
 TW PAT NO. M311791  
 J P PAT NO. 3128766  
 K R PAT NO. 20-0433603  
 C N PAT NO. ZL200620132661.0  
 C H PAT NO. 696550  
 T R PAT NO. TR 2007 02942 Y  
 I T PAT NO. N.0000266731

MODEL NO.	TYPE	L	l <sub>1</sub>	l <sub>2</sub>	d <sub>1</sub>	d <sub>2</sub>	T	SIZE RANGE	WEIGHT (KGS)
5026-753-016-070	SBT40 x UT16 - 70	135.4	70	40	30	30	M10 x 1.5P	1 ~ 10	1.14
5026-753-016-100	SBT40 x UT16 - 100	165.4	100	63	30	30	M10 x 1.5P	1 ~ 10	1.28
5026-753-016-125	SBT40 x UT16 - 125	190.4	125	88	30	30	M10 x 1.5P	1 ~ 10	1.39
5026-753-016-150	SBT40 x UT16 - 150	215.4	150	113	30	30	M10 x 1.5P	1 ~ 10	1.49
5026-753-020-070	SBT40 x UT20 - 70	135.4	70	38	35	36	M12 x 1.75P	1 ~ 13	1.18
5026-753-020-100	SBT40 x UT20 - 100	165.4	100	68	35	36	M12 x 1.75P	1 ~ 13	1.39
5026-753-020-125	SBT40 x UT20 - 125	190.4	125	93	35	36	M12 x 1.75P	1 ~ 13	1.55
5026-753-020-150	SBT40 x UT20 - 150	215.4	150	118	35	36	M12 x 1.75P	1 ~ 13	1.72
5026-753-025-070	SBT40 x UT25 - 70	135.4	70	40	42	42	M16 x 2.0P	1 ~ 16	1.23
5026-753-025-100	SBT40 x UT25 - 100	165.4	100	70	42	42	M16 x 2.0P	1 ~ 16	1.51
5026-753-025-150	SBT40 x UT25 - 150	215.4	150	118	42	42	M16 x 2.0P	1 ~ 16	1.99
5026-753-032-070	SBT40 x UT32 - 70	135.4	70	40	48	48	M16 x 2.0P	2 ~ 20	1.24
5026-753-032-100	SBT40 x UT32 - 100	165.4	100	70	48	48	M16 x 2.0P	2 ~ 20	1.62
5026-753-032-125	SBT40 x UT32 - 125	190.4	125	95	48	48	M16 x 2.0P	2 ~ 20	1.94
5026-753-032-150	SBT40 x UT32 - 150	215.4	150	120	48	48	M16 x 2.0P	2 ~ 20	2.26

### Features:

- ▶ The deeper holder gauge line optimizes the coverage of ER spring collet and increases machining stability.
- ▶ UT clamping nut is designed without eccentric. Used with ER and ERE spring collets.
- ▶ The O-ring design on the front of holders prevents chips and coolant from entering holders.
- ▶ UT nuts without slots reduce the wind shear at high speed.

### Product information:

- ▶ AD+B type is available, please inform us when making an order.

### Standard Accessory: • NUT

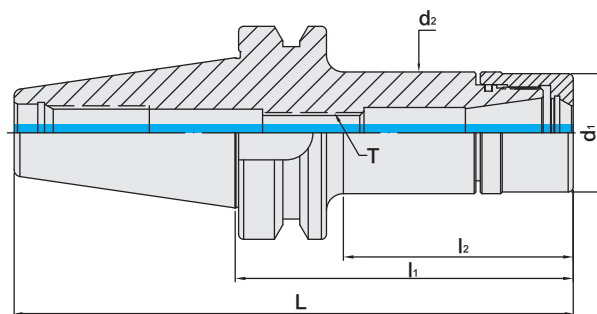
Collet	Nut	Pull Stud	Preset Screw	Spanner	Torque Wrench Adapter (Pull Stud)	Spanner (Pull Stud)
P.W-11~14	P.W-55	P.W-67~68	P.W-107	P.W-75、77、81	P.W-78	P.W-82



# SBT / UT COLLET CHUCK



## SBT / UT 法蘭加厚型立銑刀夾頭



TW PAT NO. M298033  
 TW PAT NO. M311791  
 J P PAT NO. 3128766  
 K R PAT NO. 20-0433603  
 C N PAT NO. ZL200620132661.0  
 C H PAT NO. 696550  
 T R PAT NO. TR 2007 02942 Y  
 I T PAT NO. N.0000266731

MODEL NO.	TYPE	L	l <sub>1</sub>	l <sub>2</sub>	d <sub>1</sub>	d <sub>2</sub>	T	SIZE RANGE	WEIGHT (KGS)
5027-753-016-070	SBT50 x UT16 - 70	171.8	70	29	30	30	M10 x 1.5P	1 ~ 10	3.69
5027-753-016-100	SBT50 x UT16 - 100	201.8	100	52	30	30	M10 x 1.5P	1 ~ 10	3.79
5027-753-016-125	SBT50 x UT16 - 125	226.8	125	77	30	30	M10 x 1.5P	1 ~ 10	3.85
5027-753-016-150	SBT50 x UT16 - 150	251.8	150	102	30	30	M10 x 1.5P	1 ~ 10	4.02
5027-753-020-070	SBT50 x UT20 - 70	171.8	70	31.6	35	36	M12 x 1.75P	1 ~ 13	3.73
5027-753-020-100	SBT50 x UT20 - 100	201.8	100	52	35	36	M12 x 1.75P	1 ~ 13	3.90
5027-753-020-125	SBT50 x UT20 - 125	226.8	125	77	35	36	M12 x 1.75P	1 ~ 13	4.03
5027-753-020-150	SBT50 x UT20 - 150	251.8	150	102	35	36	M12 x 1.75P	1 ~ 13	4.28
5027-753-025-070	SBT50 x UT25 - 70	171.8	70	29.8	42	42	M16 x 2.0P	1 ~ 16	3.74
5027-753-025-100	SBT50 x UT25 - 100	201.8	100	52	42	42	M16 x 2.0P	1 ~ 16	3.96
5027-753-025-150	SBT50 x UT25 - 150	251.8	150	102	42	42	M16 x 2.0P	1 ~ 16	4.41
5027-753-032-080	SBT50 x UT32 - 80	181.8	80	41	48	48	M16 x 2.0P	2 ~ 20	3.87
5027-753-032-100	SBT50 x UT32 - 100	201.8	100	57	48	48	M16 x 2.0P	2 ~ 20	4.08
5027-753-032-125	SBT50 x UT32 - 125	226.8	125	82	48	48	M16 x 2.0P	2 ~ 20	4.36
5027-753-032-150	SBT50 x UT32 - 150	251.8	150	102	48	48	M16 x 2.0P	2 ~ 20	4.66

### Features:

- ▶ The deeper holder gauge line optimizes the coverage of ER spring collet and increases machining stability.
- ▶ UT clamping nut is designed without eccentric. Used with ER and ERE spring collets.
- ▶ The O-ring design on the front of holders prevents chips and coolant from entering holders
- ▶ UT nuts without slots reduce the wind shear at high speed.

### Product information:

- ▶ AD+B type is available, please inform us when making an order.

### Standard Accessory: • NUT

Collet	Nut	Pull Stud	Preset Screw	Spanner	Torque Wrench Adapter (Pull Stud)	Spanner (Pull Stud)
P.W-11~14	P.W-55	P.W-67~68	P.W-107	P.W-75、77、81	P.W-78	P.W-82

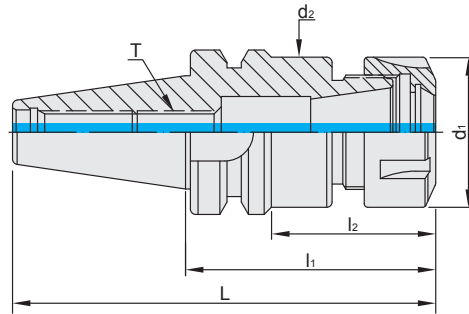


# SBT / ER COLLET CHUCK



SBT / ER 法蘭加厚型立銑刀夾頭

(DIN ISO 15488)



TW PAT NO. M298033  
 TW PAT NO. M311791  
 J P PAT NO. 3128766  
 K R PAT NO. 20-0433603  
 C N PAT NO. ZL200620132661.0  
 C H PAT NO. 696550  
 T R PAT NO. TR 2007 02942 Y  
 I T PAT NO. N.0000266731

MODEL NO.	TYPE	L	l <sub>1</sub>	l <sub>2</sub>	d <sub>1</sub>	d <sub>2</sub>	T	SIZE RANGE	WEIGHT (KGS)
5025-108-016-050	SBT30 x ER16A - 50	98.4	50	27	28	28	M10 x 1.5P	1 ~ 10	0.45
5025-108-016-060	SBT30 x ER16A - 60	108.4	60	35	28	28	M10 x 1.5P	1 ~ 10	0.60
5025-108-016-070	SBT30 x ER16A - 70	118.4	70	43	28	28	M10 x 1.5P	1 ~ 10	0.55
5025-108-016-100	SBT30 x ER16A - 100	148.4	100	70	28	28	M10 x 1.5P	1 ~ 10	0.70
5025-108-016-120	SBT30 x ER16A - 120	168.4	120	93	28	28	M10 x 1.5P	1 ~ 10	0.78
5025-108-020-050	SBT30 x ER20A - 50	98.4	50	28	34	34	M12 x 1.75P	1 ~ 13	0.48
5025-108-020-070	SBT30 x ER20A - 70	118.4	70	45	34	34	M12 x 1.75P	1 ~ 13	0.62
5025-108-020-135	SBT30 x ER20A - 135	183.4	135	110	34	34	M12 x 1.75P	1 ~ 13	1.00
5025-110-025-070	SBT30 x ER25 - 70	118.4	70	46	42	42	M16 x 2.0P	1 ~ 16	0.70
5025-110-025-135	SBT30 x ER25 - 135	183.4	135	111	42	42	M16 x 2.0P	1 ~ 16	1.45
5025-110-032-070	SBT30 x ER32 - 70	118.4	70	48	50	45	M16 x 2.0P	2 ~ 20	0.70
5025-110-032-100	SBT30 x ER32 - 100	148.4	100	78	50	45	M16 x 2.0P	2 ~ 20	1.00
5025-110-040-080	SBT30 x ER40 - 80	128.4	80	58	63	53	M16 x 2.0P	3 ~ 26	1.10

**Features:**

- ▶ According to DIN ISO 15488.
- ▶ This ER collet chuck has superior flexibility for use with all tool types, e.g. drills, taps, mills, reamers.
- ▶ It is recommended to tighten the clamping nuts using a torque wrench. Refer to NO.75 General Catalog- Accessories for the info. of recommended tightening torque.

**Product information:**

- ▶ SBT30 tool holders are without coolant supply over collars.

**Standard Accessory: • NUT**

Collet	Nut	Pull Stud	Preset Screw	Spanner	Torque Wrench Adapter (Pull Stud)	Spanner (Pull Stud)
P.W-11~34	P.W-55~59	P.W-67~68	P.W-107	P.W-75~77、79、81	P.W-78	P.W-82

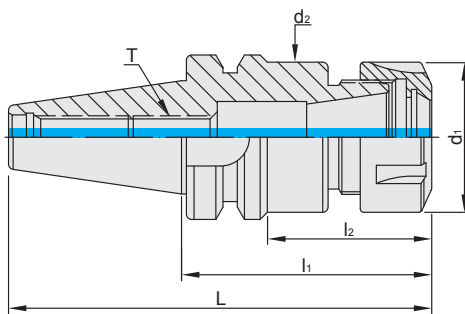


# SBT / ER COLLET CHUCK



SBT / ER 法蘭加厚型立銑刀夾頭

(DIN ISO 15488)



TW PAT NO. M298033  
 TW PAT NO. M311791  
 J P PAT NO. 3128766  
 K R PAT NO. 20-0433603  
 C N PAT NO. ZL200620132661.0  
 C H PAT NO. 696550  
 T R PAT NO. TR 2007 02942 Y  
 I T PAT NO. N.0000266731

MODEL NO.	TYPE	L	l <sub>1</sub>	l <sub>2</sub>	d <sub>1</sub>	d <sub>2</sub>	T	SIZE RANGE	WEIGHT (KGS)
5026-108-016-070	SBT40 x ER16A - 70	135.4	70	40	28	28	M10 x 1.5P	1 ~ 10	1.20
5026-108-016-100	SBT40 x ER16A - 100	165.4	100	63	28	28	M10 x 1.5P	1 ~ 10	1.30
5026-108-016-125	SBT40 x ER16A - 125	190.4	125	88	28	28	M10 x 1.5P	1 ~ 10	1.36
5026-108-016-150	SBT40 x ER16A - 150	215.4	150	113	28	28	M10 x 1.5P	1 ~ 10	1.54
5026-108-016-180	SBT40 x ER16A - 180	245.4	180	143	28	28	M10 x 1.5P	1 ~ 10	2.00
5026-108-016-200	SBT40 x ER16A - 200	265.4	200	163	28	28	M10 x 1.5P	1 ~ 10	1.56
5026-108-020-070	SBT40 x ER20A - 70	135.4	70	40	34	34	M12 x 1.75P	1 ~ 13	1.18
5026-108-020-100	SBT40 x ER20A - 100	165.4	100	70	34	34	M12 x 1.75P	1 ~ 13	1.80
5026-108-020-135	SBT40 x ER20A - 135	200.4	135	105	34	34	M12 x 1.75P	1 ~ 13	1.70
5026-108-020-150	SBT40 x ER20A - 150	215.4	150	120	34	34	M12 x 1.75P	1 ~ 13	1.80
5026-108-020-200	SBT40 x ER20A - 200	265.4	200	170.5	34	34	M12 x 1.75P	1 ~ 13	1.87
5026-110-025-070	SBT40 x ER25 - 70	135.4	70	40	42	42	M16 x 2.0P	1 ~ 16	1.30
5026-110-025-100	SBT40 x ER25 - 100	165.4	100	70	42	42	M16 x 2.0P	1 ~ 16	1.50
5026-110-025-125	SBT40 x ER25 - 125	190.4	125	95	42	42	M16 x 2.0P	1 ~ 16	1.78
5026-110-025-150	SBT40 x ER25 - 150	215.4	150	120	42	42	M16 x 2.0P	1 ~ 16	2.06
5026-110-025-200	SBT40 x ER25 - 200	265.4	200	170	42	42	M16 x 2.0P	1 ~ 16	2.38
5026-110-032-070	SBT40 x ER32 - 70	135.4	70	40	50	50	M16 x 2.0P	2 ~ 20	1.30
5026-110-032-100	SBT40 x ER32 - 100	165.4	100	70	50	50	M16 x 2.0P	2 ~ 20	1.70
5026-110-032-150	SBT40 x ER32 - 150	215.4	150	120	50	50	M16 x 2.0P	2 ~ 20	2.50
5026-110-032-200	SBT40 x ER32 - 200	265.4	200	170	50	50	M16 x 2.0P	2 ~ 20	3.00
5026-110-040-080	SBT40 x ER40 - 80	145.4	80	53	63	60	-	3 ~ 26	1.50
5026-110-040-100	SBT40 x ER40 - 100	165.4	100	73	63	60	M20 x 2.0P	3 ~ 26	2.05
5026-110-040-120	SBT40 x ER40 - 120	185.4	120	93	63	60	M20 x 2.0P	3 ~ 26	1.92
5026-110-040-150	SBT40 x ER40 - 150	215.4	150	123	63	60	M20 x 2.0P	3 ~ 26	3.10
5026-110-050-085	SBT40 x ER50 - 85	150.4	85	58	78	60	M24 x 2.0P	6 ~ 34	1.70
5026-110-050-100	SBT40 x ER50 - 100	165.4	100	73	78	60	M24 x 2.0P	6 ~ 34	2.10

**Features:**

- ▶ According to DIN ISO 15488.
- ▶ This ER collet chuck has superior flexibility for use with all tool types, e.g. drills, taps, mills, reamers.
- ▶ It is recommended to tighten the clamping nuts using a torque wrench. Refer to NO.75 General Catalog- Accessories for the info. of recommended tightening torque.

**Product information:**

- ▶ AD+B type is available, please inform us when making an order.

**Standard Accessory: • NUT**

Collet	Nut	Pull Stud	Preset Screw	Spanner	Torque Wrench Adapter (Pull Stud)	Spanner (Pull Stud)
P.W-11~34	P.W-55~59	P.W-67~68	P.W-107	P.W-75~77、79、81	P.W-78	P.W-82

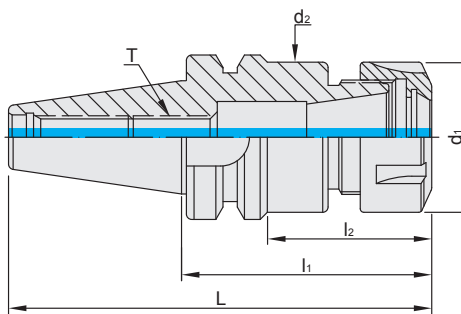


# SBT / ER COLLET CHUCK



SBT / ER 法蘭加厚型立銑刀夾頭

(DIN ISO 15488)



TW PAT NO. M298033  
 TW PAT NO. M311791  
 J P PAT NO. 3128766  
 K R PAT NO. 20-0433603  
 C N PAT NO. ZL200620132661.0  
 C H PAT NO. 696550  
 T R PAT NO. TR 2007 02942 Y  
 I T PAT NO. N.0000266731

MODEL NO.	TYPE	L	l <sub>1</sub>	l <sub>2</sub>	d <sub>1</sub>	d <sub>2</sub>	T	SIZE RANGE	WEIGHT (KGS)
5027-108-016-070	SBT50 x ER16A - 70	171.8	70	29	28	28	M10 x 1.5P	1 ~ 10	4.05
5027-108-016-090	SBT50 x ER16A - 90	191.8	90	47	28	28	M10 x 1.5P	1 ~ 10	4.20
5027-108-016-105	SBT50 x ER16A - 105	206.8	105	57	28	28	M10 x 1.5P	1 ~ 10	4.30
5027-108-016-135	SBT50 x ER16A - 135	236.8	135	87	28	28	M10 x 1.5P	1 ~ 10	4.40
5027-108-016-150	SBT50 x ER16A - 150	251.8	150	102	28	28	M10 x 1.5P	1 ~ 10	4.50
5027-108-016-165	SBT50 x ER16A - 165	266.8	165	117	28	28	M10 x 1.5P	1 ~ 10	4.50
5027-108-020-070	SBT50 x ER20A - 70	171.8	70	29	34	34	M12 x 1.75P	1 ~ 13	4.20
5027-108-020-090	SBT50 x ER20A - 90	191.8	90	47	34	34	M12 x 1.75P	1 ~ 13	4.25
5027-108-020-105	SBT50 x ER20A - 105	206.8	105	57	34	34	M12 x 1.75P	1 ~ 13	4.30
5027-108-020-135	SBT50 x ER20A - 135	236.8	135	87	34	34	M12 x 1.75P	1 ~ 13	4.55
5027-108-020-150	SBT50 x ER20A - 150	251.8	150	102	34	34	M12 x 1.75P	1 ~ 13	4.70
5027-108-020-165	SBT50 x ER20A - 165	266.8	165	117	34	34	M12 x 1.75P	1 ~ 13	4.80
5027-108-020-200	SBT50 x ER20A - 200	301.8	200	152	34	34	M12 x 1.75P	1 ~ 13	4.90
5027-110-025-070	SBT50 x ER25 - 70	171.8	70	29	42	42	M16 x 2.0P	1 ~ 16	4.20
5027-110-025-105	SBT50 x ER25 - 105	206.8	105	57	42	42	M16 x 2.0P	1 ~ 16	4.40
5027-110-025-135	SBT50 x ER25 - 135	236.8	135	87	42	42	M16 x 2.0P	1 ~ 16	4.70
5027-110-025-165	SBT50 x ER25 - 165	266.8	165	117	42	42	M16 x 2.0P	1 ~ 16	5.00
5027-110-032-080	SBT50 x ER32 - 80	181.8	80	39	50	50	M16 x 2.0P	2 ~ 20	4.70
5027-110-032-100	SBT50 x ER32 - 100	201.8	100	57	50	50	M16 x 2.0P	2 ~ 20	4.80
5027-110-032-120	SBT50 x ER32 - 120	221.8	120	72	50	50	M16 x 2.0P	2 ~ 20	4.70
5027-110-032-150	SBT50 x ER32 - 150	251.8	150	102	50	50	M16 x 2.0P	2 ~ 20	5.30
5027-110-032-200	SBT50 x ER32 - 200	301.8	200	152	50	50	M16 x 2.0P	2 ~ 20	5.50
5027-110-040-080	SBT50 x ER40 - 80	181.8	80	39	63	63	M20 x 2.0P	3 ~ 26	4.30
5027-110-040-100	SBT50 x ER40 - 100	201.8	100	57	63	63	M20 x 2.0P	3 ~ 26	4.64
5027-110-040-120	SBT50 x ER40 - 120	221.8	120	72	63	63	M20 x 2.0P	3 ~ 26	5.10
5027-110-040-135	SBT50 x ER40 - 135	236.8	135	87	63	63	M20 x 2.0P	3 ~ 26	5.50
5027-110-050-090	SBT50 x ER50 - 90	191.8	90	49	78	78	M24 x 2.0P	6 ~ 34	4.60
5027-110-050-120	SBT50 x ER50 - 120	221.8	120	79	78	78	M24 x 2.0P	6 ~ 34	5.50
5027-110-050-165	SBT50 x ER50 - 165	266.8	165	124	78	78	M24 x 2.0P	6 ~ 34	6.10

**Features:**

- ▶ According to DIN ISO 15488.
- ▶ This ER collet chuck has superior flexibility for use with all tool types, e.g. drills, taps, mills, reamers.
- ▶ It is recommended to tighten the clamping nuts using a torque wrench. Refer to NO.75 General Catalog- Accessories for the info. of recommended tightening torque.
- ▶ AD+B type is available, please inform us when making an order.

**Standard Accessory: • NUT**

Collet	Nut	Pull Stud	Preset Screw	Spanner	Torque Wrench Adapter (Pull Stud)	Spanner (Pull Stud)
P.W-11~34	P.W-55~59	P.W-67~68	P.W-107	P.W-75~77、79、81	P.W-78	P.W-82



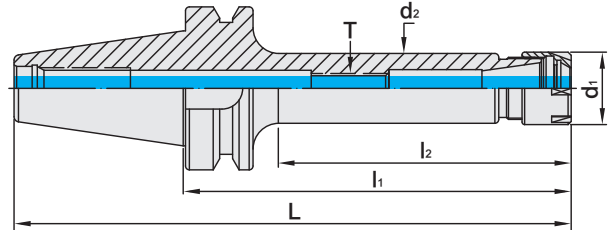
# SBT / ER COLLET CHUCK

## M TYPE



M 型 SBT / ER 法蘭加厚型立銑刀夾頭

(DIN ISO 15488)



TW PAT NO. M298033  
 TW PAT NO. M311791  
 J P PAT NO. 3128766  
 K R PAT NO. 20-0433603  
 C N PAT NO. ZL200620132661.0  
 C H PAT NO. 696550  
 T R PAT NO. TR 2007 02942 Y  
 I T PAT NO. N.0000266731

MODEL NO.	TYPE	L	l <sub>1</sub>	l <sub>2</sub>	d <sub>1</sub>	d <sub>2</sub>	T	SIZE RANGE	WEIGHT (KGS)
5025-123-011-070	SBT30 x ER11M - 70	118.4	70	40	16	15	M6 x 1.0P	1 ~ 7	0.50
5025-123-011-100	SBT30 x ER11M - 100	148.4	100	70	16	15	M6 x 1.0P	1 ~ 7	0.60
5025-123-011-120	SBT30 x ER11M - 120	168.4	120	88	16	15	M6 x 1.0P	1 ~ 7	0.70
5025-123-016-070	SBT30 x ER16M - 70	118.4	70	43	22	21	M10 x 1.5P	1 ~ 10	0.55
5025-123-016-100	SBT30 x ER16M - 100	148.4	100	73	22	21	M10 x 1.5P	1 ~ 10	0.56
5025-123-016-120	SBT30 x ER16M - 120	168.4	120	88	22	21	M10 x 1.5P	1 ~ 10	0.75
5025-123-020-070	SBT30 x ER20M - 70	118.4	70	45.5	28	27	M12 x 1.75P	1 ~ 13	0.65
5025-123-020-100	SBT30 x ER20M - 100	148.4	100	71	28	27	M12 x 1.75P	1 ~ 13	0.70
5025-123-020-120	SBT30 x ER20M - 120	168.4	120	91	28	27	M12 x 1.75P	1 ~ 13	0.80
5025-123-020-150	SBT30 x ER20M - 150	198.4	150	121	28	27	M12 x 1.75P	1 ~ 13	1.00
5026-123-011-070	SBT40 x ER11M - 70	135.4	70	33	16	15	M6 x 1.0P	1 ~ 7	1.10
5026-123-011-100	SBT40 x ER11M - 100	165.4	100	63	16	15	M6 x 1.0P	1 ~ 7	1.10
5026-123-011-125	SBT40 x ER11M - 125	190.4	125	88	16	15	M6 x 1.0P	1 ~ 7	1.12
5026-123-011-150	SBT40 x ER11M - 150	215.4	150	113	16	15	M6 x 1.0P	1 ~ 7	1.20
5026-123-016-070	SBT40 x ER16M - 70	135.4	70	38	22	21	M10 x 1.5P	1 ~ 10	1.08
5026-123-016-100	SBT40 x ER16M - 100	165.4	100	63	22	21	M10 x 1.5P	1 ~ 10	1.16
5026-123-016-125	SBT40 x ER16M - 125	190.4	125	88	22	21	M10 x 1.5P	1 ~ 10	1.20
5026-123-016-150	SBT40 x ER16M - 150	215.4	150	113	22	21	M10 x 1.5P	1 ~ 10	1.28
5026-123-020-070	SBT40 x ER20M - 70	135.4	70	38	28	27	M12 x 1.75P	1 ~ 13	1.10
5026-123-020-100	SBT40 x ER20M - 100	165.4	100	63	28	27	M12 x 1.75P	1 ~ 13	1.24
5026-123-020-125	SBT40 x ER20M - 125	190.4	125	88	28	27	M12 x 1.75P	1 ~ 13	1.30
5026-123-020-150	SBT40 x ER20M - 150	215.4	150	113	28	27	M12 x 1.75P	1 ~ 13	1.44

**Features:**

- ▶ According to DIN ISO 15488.
- ▶ This ER collet chuck has superior flexibility for use with all tool types, e.g. drills, taps, mills, reamers.
- ▶ It is recommended to tighten the clamping nuts using a torque wrench. Refer to NO.75 General Catalog- Accessories for the info. of recommended tightening torque.

**Product information:**

- ▶ AD+B type is available, please inform us when making an order.
- ▶ SBT30 tool holders are without coolant supply over collars.

**Standard Accessory: • NUT**

Collet	Nut	Pull Stud	Preset Screw	Spanner	Torque Wrench Adapter (Pull Stud)	Spanner (Pull Stud)
P.W-11~34	P.W-56	P.W-67~68	P.W-107	PW-75~76、79	P.W-78	P.W-82

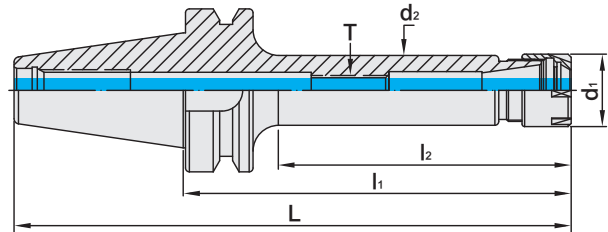
# SBT / ER COLLET CHUCK

## M TYPE



M 型 SBT / ER 法蘭加厚型立銑刀夾頭

(DIN ISO 15488)



TW PAT NO. M298033  
 TW PAT NO. M311791  
 J P PAT NO. 3128766  
 K R PAT NO. 20-0433603  
 C N PAT NO. ZL200620132661.0  
 C H PAT NO. 696550  
 T R PAT NO. TR 2007 02942 Y  
 I T PAT NO. N.0000266731

MODEL NO.	TYPE	L	l <sub>1</sub>	l <sub>2</sub>	d <sub>1</sub>	d <sub>2</sub>	T	SIZE RANGE	WEIGHT (KGS)
5027-123-011-070	SBT50 x ER11M - 70	171.8	70	22	16	15	M6 x 1.0P	1 ~ 7	3.80
5027-123-011-090	SBT50 x ER11M - 90	191.8	90	42	16	15	M6 x 1.0P	1 ~ 7	3.90
5027-123-011-105	SBT50 x ER11M - 105	206.8	105	57	16	15	M6 x 1.0P	1 ~ 7	4.00
5027-123-011-135	SBT50 x ER11M - 135	236.8	135	87	16	15	M6 x 1.0P	1 ~ 7	4.10
5027-123-011-165	SBT50 x ER11M - 165	266.8	165	92	16	15	M6 x 1.0P	1 ~ 7	4.20
5027-123-016-070	SBT50 x ER16M - 70	171.8	70	29	22	21	M10 x 1.5P	1 ~ 10	3.90
5027-123-016-090	SBT50 x ER16M - 90	191.8	90	42	22	21	M10 x 1.5P	1 ~ 10	4.00
5027-123-016-105	SBT50 x ER16M - 105	206.8	105	57	22	21	M10 x 1.5P	1 ~ 10	4.10
5027-123-016-135	SBT50 x ER16M - 135	236.8	135	87	22	21	M10 x 1.5P	1 ~ 10	4.20
5027-123-016-165	SBT50 x ER16M - 165	266.8	165	117	22	21	M10 x 1.5P	1 ~ 10	4.30
5027-123-020-090	SBT50 x ER20M - 90	191.8	90	42	28	27	M12 x 1.75P	1 ~ 13	4.10
5027-123-020-105	SBT50 x ER20M - 105	206.8	105	57	28	27	M12 x 1.75P	1 ~ 13	4.20
5027-123-020-135	SBT50 x ER20M - 135	236.8	135	87	28	27	M12 x 1.75P	1 ~ 13	4.40
5027-123-020-165	SBT50 x ER20M - 165	266.8	165	117	28	27	M12 x 1.75P	1 ~ 13	4.60

**Features:**

- ▶ According to DIN ISO 15488.
- ▶ This ER collet chuck has superior flexibility for use with all tool types, e.g. drills, taps, mills, reamers.
- ▶ It is recommended to tighten the clamping nuts using a torque wrench. Refer to NO.75 General Catalog- Accessories for the info. of recommended tightening torque.

**Product information:**

- ▶ AD+B type is available, please inform us when making an order.

**Standard Accessory: • NUT**

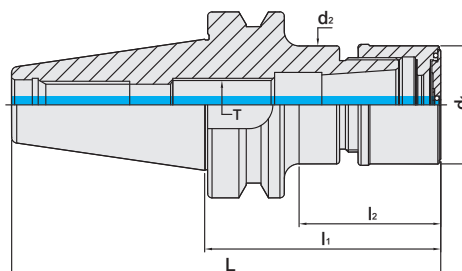
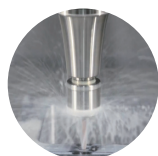
Collet	Nut	Pull Stud	Preset Screw	Spanner	Torque Wrench Adapter (Pull Stud)	Spanner (Pull Stud)
P.W-11~34	P.W-56	P.W-67~68	P.W-107	PW-75~76、79	P.W-78	P.W-82



# SBT / SKX COLLET CHUCK



## SBT / SKX 法蘭加厚型立銑刀夾頭



MODEL NO.	TYPE	L	l <sub>1</sub>	l <sub>2</sub>	d <sub>1</sub>	d <sub>2</sub>	T	SIZE RANGE	WEIGHT (KGS)
5025-790-006-060	SBT30 x SKX6 - 60	108.4	60	33	19.5	19.5	M8 x 1.25P	1 ~ 6	0.70
5025-790-006-090	SBT30 x SKX6 - 90	138.4	90	56	19.5	19.5	M8 x 1.25P	1 ~ 6	0.70
5025-790-006-120	SBT30 x SKX6 - 120	168.4	120	86	19.5	19.5	M8 x 1.25P	1 ~ 6	0.80
5025-790-010-045	SBT30 x SKX10 - 45	93.4	45	23	30	30	M12 x 1.75P	2 ~ 10	0.80
5025-790-010-060	SBT30 x SKX10 - 60	108.4	60	35	30	30	M12 x 1.75P	2 ~ 10	0.90
5025-790-010-075	SBT30 x SKX10 - 75	123.4	75	50	30	30	M12 x 1.75P	2 ~ 10	1.00
5025-790-010-090	SBT30 x SKX10 - 90	138.4	90	65	30	30	M12 x 1.75P	2 ~ 10	1.00
5025-790-010-120	SBT30 x SKX10 - 120	168.4	120	95	30	30	M12 x 1.75P	2 ~ 10	1.10
5025-790-013-060	SBT30 x SKX13 - 60	108.4	60	35	35	33	M12 x 1.75P	2 ~ 13	1.10
5025-790-013-090	SBT30 x SKX13 - 90	138.4	90	65	35	33	M12 x 1.75P	2 ~ 13	1.10
5025-790-013-120	SBT30 x SKX13 - 120	168.4	120	95	35	33	M12 x 1.75P	2 ~ 13	1.20
5025-790-016-060	SBT30 x SKX16 - 60	108.4	60	35	40	40	M18 x 1.5P	2 ~ 16	1.10
5025-790-016-075	SBT30 x SKX16 - 75	123.4	75	50	40	40	M18 x 1.5P	2 ~ 16	1.20
5025-790-016-090	SBT30 x SKX16 - 90	138.4	90	65	40	40	M18 x 1.5P	2 ~ 16	1.20
5025-790-016-120	SBT30 x SKX16 - 120	168.4	120	95	40	40	M18 x 1.5P	2 ~ 16	1.30
5025-790-020-060	SBT30 x SKX20 - 60	108.4	60	30	48	48	M12 x 1.75P	3 ~ 20	0.70
5025-790-020-075	SBT30 x SKX20 - 75	123.4	75	45	48	48	M12 x 1.75P	3 ~ 20	0.90
5025-790-020-090	SBT30 x SKX20 - 90	138.4	90	60	48	48	M12 x 1.75P	3 ~ 20	1.20
5025-790-025-090	SBT30 x SKX25 - 90	138.4	90	60	55	55	M12 x 1.75P	3 ~ 25 .4	1.50

### Features:

- ▶ Higher clamping force and precision stability than 8° ER design due to 4° taper angle collet design.
- ▶ SKX sealed nuts are capable of coolant pressure up to 70bar.
- ▶ Nuts in smaller OD and without slots are suitable for high-speed machining with less interference.
- ▶ Shorter overhanging tool length, better rigidity.
- ▶ SKX tool holders of the length over 120mm have curved line design for better rigidity.

### Product information:

- ▶ SKX sealed cap is optional. Please order SKX sealed cap additionally.
- ▶ With the design of SKX sealed cap, coolant pressure capable up to 70 bar.
- ▶ Used with coolant-through tools.
- ▶ Balance: G2.5 25,000rpm.
- ▶ SBT30 tool holders are without coolant supply over collars.

### Standard Accessory: • NUT

Collet	Nut	Sealed Cap	Pull Stud	Preset Screw	Spanner	Sealed Cap Spanner	Torque Wrench Adapter (Pull Stud)	Spanner (Pull Stud)
P.W-35	P.W-62	P.W-63	P.W-67~68	P.W-107	P.W-75、77、81	P.W-80	P.W-78	P.W-82



# SBT / SKX COLLET CHUCK



## SBT / SKX 法蘭加厚型立銑刀夾頭



Fig.1

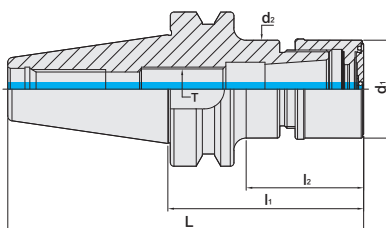
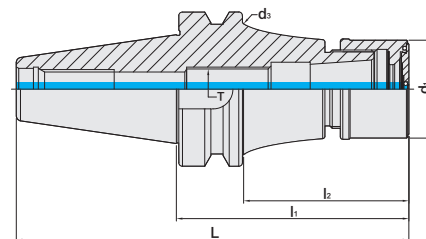


Fig.2

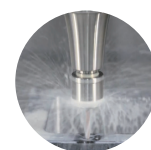


MODEL NO.	TYPE	L	l <sub>1</sub>	l <sub>2</sub>	d <sub>1</sub>	d <sub>2</sub>	d <sub>3</sub>	T	SIZE RANGE	Fig.	WEIGHT (KGS)
5026-790-006-060	SBT40 x SKX6 - 60	125.4	60	30	19.5	19.5	-	M8 x 1.25P	1 ~ 6	1	1.00
5026-790-006-090	SBT40 x SKX6 - 90	155.4	90	51	19.5	19.5	-	M8 x 1.25P	1 ~ 6	1	1.10
5026-790-006-120	SBT40 x SKX6 - 120	185.4	120	93	19.5	19.5	53	M8 x 1.25P	1 ~ 6	2	1.56
5026-790-006-150	SBT40 x SKX6 - 150	215.4	150	123	19.5	19.5	53	M8 x 1.25P	2 ~ 6	2	1.72
5026-790-010-060	SBT40 x SKX10 - 60	125.4	60	32	30	30	-	M12 x 1.75P	2 ~ 10	1	1.10
5026-790-010-075	SBT40 x SKX10 - 75	140.4	75	45	30	30	-	M12 x 1.75P	2 ~ 10	1	1.20
5026-790-010-090	SBT40 x SKX10 - 90	155.4	90	48	30	30	-	M12 x 1.75P	2 ~ 10	1	1.20
5026-790-010-120	SBT40 x SKX10 - 120	185.4	120	93	30	30	53	M12 x 1.75P	2 ~ 10	2	1.40
5026-790-010-150	SBT40 x SKX10 - 150	215.4	150	123	30	30	53	M12 x 1.75P	2 ~ 10	2	1.91
5026-790-010-180	SBT40 x SKX10 - 180	245.4	180	153	30	30	53	M12 x 1.75P	2 ~ 10	2	2.08
5026-790-010-200	SBT40 x SKX10 - 200	265.4	200	173	30	30	53	M12 x 1.75P	2 ~ 10	2	2.17
5026-790-010-250	SBT40 x SKX10 - 250	315.4	250	223	30	30	53	M12 x 1.75P	2 ~ 10	2	2.31
5026-790-013-080	SBT40 x SKX13 - 80	145.4	80	50	33	33	-	M12 x 1.75P	2 ~ 13	1	1.10
5026-790-013-100	SBT40 x SKX13 - 100	165.4	100	70	33	33	-	M12 x 1.75P	2 ~ 13	1	1.30
5026-790-013-120	SBT40 x SKX13 - 120	185.4	120	90	33	33	-	M12 x 1.75P	2 ~ 13	2	1.40
5026-790-016-060	SBT40 x SKX16 - 60	125.4	60	32	40	40	-	M18 x 1.5P	2 ~ 16	1	1.30
5026-790-016-075	SBT40 x SKX16 - 75	140.4	75	43	40	40	-	M18 x 1.5P	2 ~ 16	1	1.40
5026-790-016-090	SBT40 x SKX16 - 90	155.4	90	58	40	40	-	M18 x 1.5P	2 ~ 16	1	1.50
5026-790-016-120	SBT40 x SKX16 - 120	185.4	120	93	40	40	62.5	M18 x 1.5P	2 ~ 16	2	1.83
5026-790-016-150	SBT40 x SKX16 - 150	215.4	150	123	40	40	62.5	M18 x 1.5P	2 ~ 16	2	2.05
5026-790-016-180	SBT40 x SKX16 - 180	245.4	180	153	40	40	62.5	M18 x 1.5P	2 ~ 16	2	2.27
5026-790-016-200	SBT40 x SKX16 - 200	265.4	200	173	40	40	62.5	M18 x 1.5P	2 ~ 16	2	2.41
5026-790-016-250	SBT40 x SKX16 - 250	315.4	250	223	40	40	62.5	M18 x 1.5P	2 ~ 16	2	3.21
5026-790-020-060	SBT40 x SKX20 - 60	125.4	60	32	48.5	48	-	M22 x 1.5P	3 ~ 20	1	1.30
5026-790-020-075	SBT40 x SKX20 - 75	140.4	75	45	48.5	48	-	M22 x 1.5P	3 ~ 20	1	1.40
5026-790-020-090	SBT40 x SKX20 - 90	155.4	90	60	48.5	48	-	M22 x 1.5P	3 ~ 20	1	1.60
5026-790-020-120	SBT40 x SKX20 - 120	185.4	120	93	48.5	48	62.5	M22 x 1.5P	3 ~ 20	2	2.00
5026-790-025-075	SBT40 x SKX25 - 75	140.4	75	47	55	55	-	M28 x 2.0P	3 ~ 25.4	1	1.70
5026-790-025-090	SBT40 x SKX25 - 90	155.4	90	61	55	55	-	M28 x 2.0P	3 ~ 25.4	1	1.80
5026-790-025-120	SBT40 x SKX25 - 120	185.4	120	93	55	55	-	M28 x 2.0P	3 ~ 25.4	1	2.00

**Product information:**

- ▶ SKX sealed cap is optional. Please order SKX sealed cap additionally.
- ▶ With the design of SKX sealed cap, coolant pressure capable up to 70 bar.
- ▶ Used with coolant-through tools.
- ▶ Balance: G2.5 25,000rpm.

**Standard Accessory: • NUT**



Collet	Nut	Sealed Cap	Pull Stud	Preset Screw	Spanner	Sealed Cap Spanner	Torque Wrench Adapter (Pull Stud)	Spanner (Pull Stud)
P.W-35	P.W-62	P.W-63	P.W-67~68	P.W-107	P.W-75、77、81	P.W-80	P.W-78	P.W-82



# SBT / SKX COLLET CHUCK



## SBT / SKX 法蘭加厚型立銑刀夾頭



Fig.1

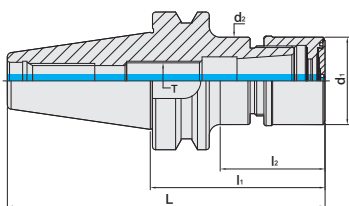
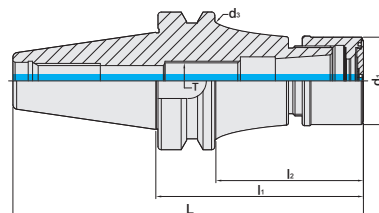


Fig.2



MODEL NO.	TYPE	L	l <sub>1</sub>	l <sub>2</sub>	d <sub>1</sub>	d <sub>2</sub>	d <sub>3</sub>	T	SIZE RANGE	Fig.	WEIGHT (KGS)
5027-790-006-105	SBT50 x SKX6 - 105	206.8	105	55	19.5	19.5	-	M8 x 1.25P	1 ~ 6	1	3.80
5027-790-006-135	SBT50 x SKX6 - 135	236.8	135	60	19.5	19.5	-	M8 x 1.25P	1 ~ 6	1	3.90
5027-790-006-165	SBT50 x SKX6 - 165	266.8	165	85	19.5	19.5	-	M8 x 1.25P	1 ~ 6	1	4.00
5027-790-006-200	SBT50 x SKX6 - 200	301.8	200	162	19.5	19.5	85	M8 x 1.25P	1 ~ 6	2	5.83
5027-790-010-105	SBT50 x SKX10 - 105	206.8	105	57	30	30	-	M12 x 1.75P	2 ~ 10	1	4.20
5027-790-010-135	SBT50 x SKX10 - 135	236.8	135	70	30	30	-	M12 x 1.75P	2 ~ 10	1	4.40
5027-790-010-165	SBT50 x SKX10 - 165	266.8	165	90	30	30	-	M12 x 1.75P	2 ~ 10	1	4.60
5027-790-010-200	SBT50 x SKX10 - 200	301.8	200	162	30	30	85	M12 x 1.75P	2 ~ 10	2	6.19
5027-790-010-225	SBT50 x SKX10 - 225	326.8	225	187	30	30	85	M12 x 1.75P	2 ~ 10	2	6.56
5027-790-010-250	SBT50 x SKX10 - 250	351.8	250	212	30	30	85	M12 x 1.75P	2 ~ 10	2	6.92
5027-790-010-300	SBT50 x SKX10 - 300	401.8	300	262	30	30	85	M12 x 1.75P	2 ~ 10	2	7.55
5027-790-013-105	SBT50 x SKX13 - 105	206.8	105	62	35	33	-	M12 x 1.75P	2 ~ 13	1	4.50
5027-790-013-135	SBT50 x SKX13 - 135	236.8	135	92	35	33	-	M12 x 1.75P	2 ~ 13	2	4.70
5027-790-013-165	SBT50 x SKX13 - 165	266.8	165	92	35	33	-	M12 x 1.75P	2 ~ 13	2	4.90
5027-790-013-200	SBT50 x SKX13 - 200	301.8	200	92	35	33	-	M12 x 1.75P	2 ~ 13	2	5.20
5027-790-013-250	SBT50 x SKX13 - 250	351.8	250	92	35	33	-	M12 x 1.75P	2 ~ 13	2	5.70
5027-790-016-105	SBT50 x SKX16 - 105	206.8	105	62	40	40	-	M18 x 1.5P	2 ~ 16	1	4.70
5027-790-016-135	SBT50 x SKX16 - 135	236.8	135	92	40	40	-	M18 x 1.5P	2 ~ 16	1	4.90
5027-790-016-165	SBT50 x SKX16 - 165	266.8	165	90	40	40	-	M18 x 1.5P	2 ~ 16	1	5.10
5027-790-016-200	SBT50 x SKX16 - 200	301.8	200	162	40	40	85	M18 x 1.5P	2 ~ 16	2	6.31
5027-790-016-250	SBT50 x SKX16 - 250	351.8	250	212	40	40	85	M18 x 1.5P	2 ~ 16	2	7.13
5027-790-016-300	SBT50 x SKX16 - 300	401.8	300	262	40	40	85	M18 x 1.5P	2 ~ 16	2	7.87
5027-790-020-105	SBT50 x SKX20 - 105	206.8	105	62	48	48.5	-	M22 x 1.5P	3 ~ 20	1	4.30
5027-790-020-135	SBT50 x SKX20 - 135	236.8	135	92	48	48.5	-	M22 x 1.5P	3 ~ 20	1	4.60
5027-790-020-165	SBT50 x SKX20 - 165	266.8	165	122	48	48.5	-	M22 x 1.5P	3 ~ 20	1	5.00
5027-790-020-200	SBT50 x SKX20 - 200	301.8	200	162	48	48.5	85	M22 x 1.5P	3 ~ 20	2	6.57
5027-790-020-250	SBT50 x SKX20 - 250	351.8	250	212	48	48.5	85	M22 x 1.5P	3 ~ 20	2	7.47
5027-790-020-300	SBT50 x SKX20 - 300	401.8	300	262	48	48.5	85	M22 x 1.5P	3 ~ 20	2	8.27
5027-790-025-105	SBT50 x SKX25 - 105	206.8	105	62	55	55	-	M28 x 2.0P	3 ~ 25.4	1	5.20
5027-790-025-135	SBT50 x SKX25 - 135	236.8	135	92	55	55	-	M28 x 2.0P	3 ~ 25.4	1	5.40
5027-790-025-165	SBT50 x SKX25 - 165	266.8	165	122	55	55	-	M28 x 2.0P	3 ~ 25.4	1	5.60
5027-790-025-200	SBT50 x SKX25 - 200	301.8	200	162	55	55	85	M28 x 2.0P	3 ~ 25.4	2	6.53
5027-790-025-250	SBT50 x SKX25 - 250	351.8	250	212	55	55	85	M28 x 2.0P	3 ~ 25.4	2	7.57
5027-790-025-300	SBT50 x SKX25 - 300	401.8	300	262	55	55	85	M28 x 2.0P	3 ~ 25.4	2	8.51

### Standard Accessory: • NUT

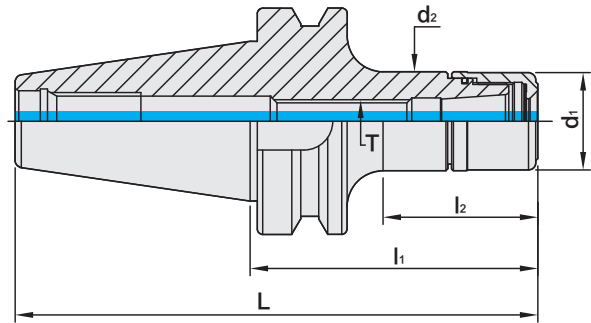
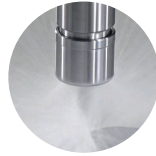
Collet	Nut	Sealed Cap	Pull Stud	Preset Screw	Spanner	Sealed Cap Spanner	Torque Wrench Adapter (Pull Stud)	Spanner (Pull Stud)
P.W-35~36	P.W-62	P.W-63	P.W-67~68	P.W-107	P.W-75、77、81	P.W-80	P.W-78	P.W-82



# SBT / SK3 COLLET CHUCK



## SBT / SK3 法蘭加厚型高速機專用夾頭



MODEL NO.	TYPE	L	l <sub>1</sub>	l <sub>2</sub>	d <sub>1</sub>	d <sub>2</sub>	T	SIZE RANGE	WEIGHT (KGS)
5025-763-006-060	SBT30 x SK306 - 60	108.4	60	33	19.5	19.5	M8 x 1.25P	1 ~ 6	0.90
5025-763-006-080	SBT30 x SK306 - 80	128.4	80	53	19.5	19.5	M8 x 1.25P	1 ~ 6	1.00
5025-763-010-060	SBT30 x SK310 - 60	108.4	60	35	27.5	27.5	M12 x 1.75P	2 ~ 10	0.90
5025-763-010-080	SBT30 x SK310 - 80	128.4	80	55	27.5	27.5	M12 x 1.75P	2 ~ 10	1.00
5025-763-013-060	SBT30 x SK313 - 60	108.4	60	35	33	33	M12 x 1.75P	2 ~ 13	1.10
5025-763-013-080	SBT30 x SK313 - 80	128.4	80	55	33	33	M12 x 1.75P	2 ~ 13	1.00
5025-763-016-060	SBT30 x SK316 - 60	108.4	60	38	40	40	M18 x 1.5P	2 ~ 16	1.20
5025-763-016-080	SBT30 x SK316 - 80	128.4	80	57	40	40	M18 x 1.5P	2 ~ 16	1.30
5026-763-006-080	SBT40 x SK306 - 80	145.4	80	43	19.5	19.5	M8 x 1.25P	1 ~ 6	1.10
5026-763-006-100	SBT40 x SK306 - 100	165.4	100	63	19.5	19.5	M8 x 1.25P	1 ~ 6	1.30
5026-763-006-120	SBT40 x SK306 - 120	185.4	120	83	19.5	19.5	M8 x 1.25P	1 ~ 6	1.40
5026-763-010-080	SBT40 x SK310 - 80	145.4	80	43	27.5	27.5	M12 x 1.75P	2 ~ 10	1.10
5026-763-010-100	SBT40 x SK310 - 100	165.4	100	63	27.5	27.5	M12 x 1.75P	2 ~ 10	1.30
5026-763-010-120	SBT40 x SK310 - 120	185.4	120	83	27.5	27.5	M12 x 1.75P	2 ~ 10	1.40
5026-763-013-080	SBT40 x SK313 - 80	145.4	80	50	33	33	M12 x 1.75P	2 ~ 13	1.10
5026-763-013-100	SBT40 x SK313 - 100	165.4	100	70	33	33	M12 x 1.75P	2 ~ 13	1.30
5026-763-013-120	SBT40 x SK313 - 120	185.4	120	90	33	33	M12 x 1.75P	2 ~ 13	1.40
5026-763-016-080	SBT40 x SK316 - 80	145.4	80	48	40	40	M18 x 1.5P	2 ~ 16	1.20
5026-763-016-100	SBT40 x SK316 - 100	165.4	100	68	40	40	M18 x 1.5P	2 ~ 16	1.40
5026-763-016-120	SBT40 x SK316 - 120	185.4	120	88	40	40	M18 x 1.5P	2 ~ 16	1.50

### Features:

- ▶ Using 4° taper angle collets achieves higher clamping power and stability than 8° design of the ER system.
- ▶ Smaller OD nuts without slots are ideal for high-speed machining with less interference.
- ▶ Dustproof design of adding O rings prevents metal chips and coolants from getting into tool holders.

### Product information:

- ▶ Balance: G2.5 25,000 rpm. Higher balancing grade and revolution can be done upon request but additional charge is needed.
- ▶ AD+B type is available, please inform us when making an order.
- ▶ SBT30 tool holders are without coolant supply over collars.

### Standard Accessory: • NUT

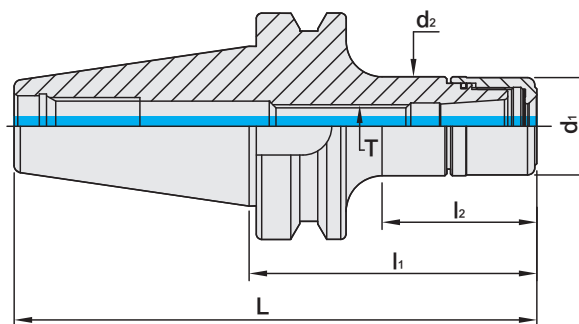
Collet	Nut	Pull Stud	Preset Screw	Spanner	Torque Wrench Adapter (Pull Stud)	Spanner (Pull Stud)
P.W-35~39	P.W-59	P.W-67~68	P.W-107	P.W-75、77、81	P.W-78	P.W-82



# SBT / SK3 COLLET CHUCK

Dual  
DRIVE+5 $\mu$ m

SBT / SK3 法蘭加厚型高速機專用夾頭



MODEL NO.	TYPE	L	l <sub>1</sub>	l <sub>2</sub>	d <sub>1</sub>	d <sub>2</sub>	T	SIZE RANGE	WEIGHT (KGS)
5027-763-006-080	SBT50 x SK306 - 80	181.8	80	34	19.5	19.5	M8 x 1.25P	1 ~ 6	4.00
5027-763-006-100	SBT50 x SK306 - 100	201.8	100	54	19.5	19.5	M8 x 1.25P	1 ~ 6	4.10
5027-763-006-120	SBT50 x SK306 - 120	221.8	120	61	19.5	19.5	M8 x 1.25P	1 ~ 6	4.20
5027-763-010-080	SBT50 x SK310 - 80	181.8	80	39	27.5	27.5	M12 x 1.75P	2 ~ 10	4.10
5027-763-010-100	SBT50 x SK310 - 100	201.8	100	57	27.5	27.5	M12 x 1.75P	2 ~ 10	4.20
5027-763-010-120	SBT50 x SK310 - 120	221.8	120	79	27.5	27.5	M12 x 1.75P	2 ~ 10	4.30
5027-763-013-080	SBT50 x SK313 - 80	181.8	80	39	33	33	M12 x 1.75P	2 ~ 13	4.20
5027-763-013-100	SBT50 x SK313 - 100	201.8	100	52	33	33	M12 x 1.75P	2 ~ 13	4.30
5027-763-013-120	SBT50 x SK313 - 120	221.8	120	79	33	33	M12 x 1.75P	2 ~ 13	4.40
5027-763-016-080	SBT50 x SK316 - 80	181.8	80	40	40	40	M18 x 1.5P	2 ~ 16	4.30
5027-763-016-100	SBT50 x SK316 - 100	201.8	100	57	40	40	M18 x 1.5P	2 ~ 16	4.40
5027-763-016-120	SBT50 x SK316 - 120	221.8	120	72	40	40	M18 x 1.5P	2 ~ 16	4.50

### Features:

- ▶ Using 4° taper angle collets achieves higher clamping power and stability than 8° design of the ER system.
- ▶ Smaller OD nuts without slots are ideal for high-speed machining with less interference.
- ▶ Dustproof design of adding O rings prevents metal chips and coolants from getting into tool holders.

### Product information:

- ▶ Balance: G2.5 25,000 rpm. Higher balancing grade and revolution can be done upon request but additional charge is needed.
- ▶ AD+B type is available, please inform us when making an order.

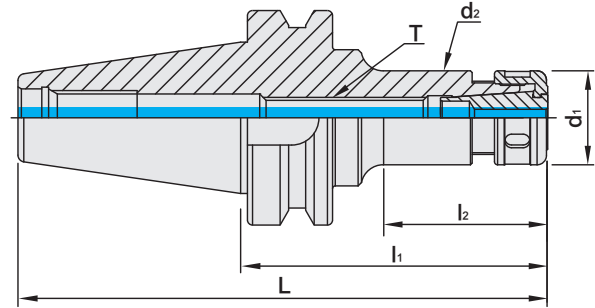
### Standard Accessory: • NUT

Collet	Nut	Pull Stud	Preset Screw	Spanner	Torque Wrench Adapter (Pull Stud)	Spanner (Pull Stud)
P.W-35~39	P.W-59	P.W-67~68	P.W-107	P.W-75、77、81	P.W-78	P.W-82

# SBT / SKS COLLET CHUCK



SBT / SKS 法蘭加厚型高速機專用夾頭



MODEL NO.	TYPE	L	l <sub>1</sub>	l <sub>2</sub>	d <sub>1</sub>	d <sub>2</sub>	T	SIZE RANGE	WEIGHT (KGS)
5025-658-006-045	SBT30 x SKS6 - 45	93.4	45	22	18	18	M8 x 1.25P	1 ~ 6	0.80
5025-658-006-060	SBT30 x SKS6 - 60	108.4	60	33	18	18	M8 x 1.25P	1 ~ 6	0.90
5025-658-010-045	SBT30 x SKS10 - 45	93.4	45	22	30	27.6	M12 x 1.75P	1 ~ 10	0.80
5025-658-010-060	SBT30 x SKS10 - 60	108.4	60	33	30	27.6	M12 x 1.75P	2 ~ 10	0.90
5025-658-010-090	SBT30 x SKS10 - 90	138.4	90	63	30	27.6	M12 x 1.75P	2 ~ 10	1.00
5025-658-013-060	SBT30 x SKS13 - 60	108.4	60	35	35	33	M12 x 1.75P	2 ~ 13	1.10
5025-658-013-090	SBT30 x SKS13 - 90	138.4	90	65	35	33	M12 x 1.75P	2 ~ 13	1.10
5025-658-013-120	SBT30 x SKS13 - 120	168.4	120	95	35	33	M12 x 1.75P	2 ~ 13	1.20
5025-658-016-060	SBT30 x SKS16 - 60	108.4	60	37	40	40	M18 x 1.5P	2 ~ 16	1.20
5025-658-016-090	SBT30 x SKS16 - 90	138.4	90	67	40	40	M18 x 1.5P	2 ~ 16	1.20
5025-658-020-060	SBT30 x SKS20 - 60	108.4	60	35	48.5	48.5	M12 x 1.75P	3 ~ 20	0.70
5025-658-020-090	SBT30 x SKS20 - 90	138.4	90	60	48.5	48.5	M12 x 1.75P	3 ~ 20	1.20

**Features:**

- ▶ T.I.R. is within 5µm at a 4D distance.
- ▶ Using with 4° taper angle SKS collets achieves better clamping force and accuracy stability than 8° ER collets.
- ▶ Smaller OD nuts reduce interference. Standard revolution is G2.5 25,000RPM, suitable for high speed machining.
- ▶ Besides standard SKS clamping nut, SKS wind resistance nut and SKS sealed nut are available for customers to choose from (must purchase additionally).

**Product information:**

- ▶ Balance: G2.5 25,000 rpm. Higher balancing grade and revolution can be done upon request but additional charge is needed.
- ▶ SBT30 tool holders are without coolant supply over collars.

**Standard Accessory: • NUT**

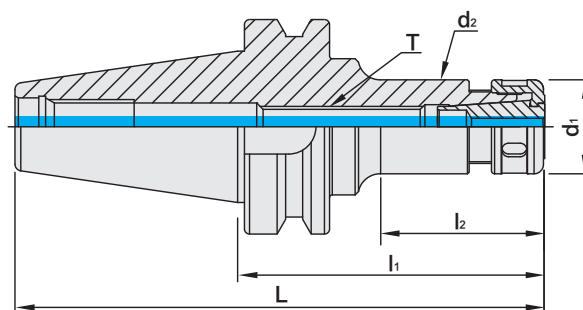
Collet	Nut	Pull Stud	Preset Screw	Spanner	Torque Wrench Adapter (Pull Stud)	Spanner (Pull Stud)
P.W-35~39	P.W-60~61	P.W-67~68	P.W-107	P.W-75~76、80	P.W-78	P.W-82



# SBT / SKS COLLET CHUCK

Dual  
DRIVE+5 $\mu$ m

SBT / SKS 法蘭加厚型高速機專用夾頭



MODEL NO.	TYPE	L	l <sub>1</sub>	l <sub>2</sub>	d <sub>1</sub>	d <sub>2</sub>	T	SIZE RANGE	WEIGHT (KGS)
5026-658-006-090	SBT40 x SKS6 - 90	155.4	90	44	18	18	M8 x 1.25P	1 ~ 6	1.20
5026-658-006-120	SBT40 x SKS6 - 120	185.4	120	74	18	18	M8 x 1.25P	1 ~ 6	1.40
5026-658-010-090	SBT40 x SKS10 - 90	155.4	90	45	30	27.6	M12 x 1.75P	2 ~ 10	1.50
5026-658-010-120	SBT40 x SKS10 - 120	185.4	120	74	30	27	M12 x 1.75P	2 ~ 10	1.60
5026-658-013-060	SBT40 x SKS13 - 60	125.4	60	30	35	33	M12 x 1.75P	2 ~ 13	1.20
5026-658-013-090	SBT40 x SKS13 - 90	155.4	90	61	35	33	M12 x 1.75P	2 ~ 13	1.40
5026-658-013-120	SBT40 x SKS13 - 120	185.4	120	88	35	33	M12 x 1.75P	2 ~ 13	1.60
5026-658-016-090	SBT40 x SKS16 - 90	155.4	90	58	40	40	M18 x 1.5P	2 ~ 16	1.60
5026-658-016-120	SBT40 x SKS16 - 120	185.4	120	88	40	40	M18 x 1.5P	2 ~ 16	1.70
5026-658-020-060	SBT40 x SKS20 - 60	125.4	60	32	48.5	48.5	M22 x 1.5P	3 ~ 20	1.30
5026-658-020-090	SBT40 x SKS20 - 90	155.4	90	60	48.5	48.5	M22 x 1.5P	3 ~ 20	1.60
5026-658-020-120	SBT40 x SKS20 - 120	185.4	120	90	48.5	48.5	M22 x 1.5P	3 ~ 20	2.00
5026-658-025-090	SBT40 x SKS25 - 90	155.4	90	61	55	55	M28 x 2.0P	3 ~ 25.4	1.70
5026-658-025-120	SBT40 x SKS25 - 120	185.4	120	91	55	55	M28 x 2.0P	3 ~ 25.4	1.80

### Features:

- ▶ T.I.R. is within 5 $\mu$ m at a 4D distance.
- ▶ Using with 4° taper angle SKS collets achieves better clamping force and accuracy stability than 8° ER collets.
- ▶ Smaller OD nuts reduce interference. Standard revolution is G2.5 25,000RPM, suitable for high speed machining.
- ▶ Besides standard SKS clamping nut, SKS wind resistance nut and SKS sealed nut are available for customers to choose from (must purchase additionally).

### Product information:

- ▶ Balance: G2.5 25,000 rpm. Higher balancing grade and revolution can be done upon request but additional charge is needed.
- ▶ AD+B type is available, please inform us when making an order.

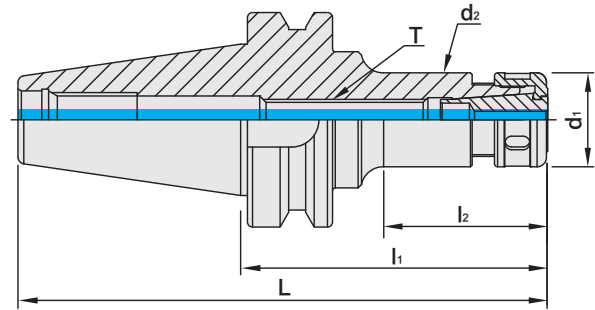
### Standard Accessory: • NUT

Collet	Nut	Pull Stud	Preset Screw	Spanner	Torque Wrench Adapter (Pull Stud)	Spanner (Pull Stud)
P.W-35~39	P.W-60~61	P.W-67~68	P.W-107	P.W-75~76、80	P.W-78	P.W-82

# SBT / SKS COLLET CHUCK



## SBT / SKS 法蘭加厚型高速機專用夾頭



MODEL NO.	TYPE	L	l <sub>1</sub>	l <sub>2</sub>	d <sub>1</sub>	d <sub>2</sub>	T	SIZE RANGE	WEIGHT (KGS)
5027-658-006-090	SBT50 x SKS6 - 90	191.8	90	42	18	18	M8 x 1.25P	1 ~ 6	4.00
5027-658-006-120	SBT50 x SKS6 - 120	221.8	120	60	18	18	M8 x 1.25P	1 ~ 6	4.20
5027-658-010-105	SBT50 x SKS10 - 105	206.8	105	62	30	27.6	M12 x 1.75P	2 ~ 10	4.50
5027-658-010-150	SBT50 x SKS10 - 150	251.8	150	94	30	27	M12 x 1.75P	2 ~ 10	4.60
5027-658-010-165	SBT50 x SKS10 - 165	266.8	165	108	30	27	M12 x 1.75P	2 ~ 10	4.30
5027-658-010-200	SBT50 x SKS10 - 200	301.8	200	145	30	27	M12 x 1.75P	2 ~ 10	5.20
5027-658-010-250	SBT50 x SKS10 - 250	351.8	250	193	30	27	M12 x 1.75P	2 ~ 10	5.60
5027-658-013-105	SBT50 x SKS13 - 105	206.8	105	62	35	33	M12 x 1.75P	2 ~ 13	4.50
5027-658-013-135	SBT50 x SKS13 - 135	236.8	135	92	35	33	M12 x 1.75P	2 ~ 13	4.70
5027-658-013-165	SBT50 x SKS13 - 165	266.8	165	92	35	33	M12 x 1.75P	2 ~ 13	4.90
5027-658-013-200	SBT50 x SKS13 - 200	301.8	200	157	35	33	M12 x 1.75P	2 ~ 13	5.20
5027-658-013-250	SBT50 x SKS13 - 250	351.8	250	207	35	33	M12 x 1.75P	2 ~ 13	5.70
5027-658-016-105	SBT50 x SKS16 - 105	206.8	105	57	40	40	M18 x 1.5P	2 ~ 16	4.50
5027-658-016-150	SBT50 x SKS16 - 150	251.8	150	93	40	40	M18 x 1.5P	2 ~ 16	4.70
5027-658-016-165	SBT50 x SKS16 - 165	266.8	165	108	40	40	M18 x 1.5P	2 ~ 16	4.50
5027-658-016-200	SBT50 x SKS16 - 200	301.8	200	157	40	40	M18 x 1.5P	2 ~ 16	5.50
5027-658-016-250	SBT50 x SKS16 - 250	351.8	250	207	40	40	M18 x 1.5P	2 ~ 16	6.00
5027-658-020-105	SBT50 x SKS20 - 105	206.8	105	62	48.5	48.5	M22 x 1.5P	3 ~ 20	4.30
5027-658-020-135	SBT50 x SKS20 - 135	236.8	135	92	48.5	48.5	M22 x 1.5P	3 ~ 20	4.60
5027-658-020-165	SBT50 x SKS20 - 165	266.8	165	122	48.5	48.5	M22 x 1.5P	3 ~ 20	5.00
5027-658-020-200	SBT50 x SKS20 - 200	301.8	200	157	48.5	48.5	M22 x 1.5P	3 ~ 20	5.40
5027-658-020-250	SBT50 x SKS20 - 250	351.8	250	207	48.5	48.5	M22 x 1.5P	3 ~ 20	6.10
5027-658-025-105	SBT50 x SKS25 - 105	206.8	105	62	55	55	M28 x 2.0P	3 ~ 25.4	4.50
5027-658-025-150	SBT50 x SKS25 - 150	251.8	150	107	55	55	M28 x 2.0P	3 ~ 25.4	4.80
5027-658-025-200	SBT50 x SKS25 - 200	301.8	200	157	55	55	M28 x 2.0P	3 ~ 25.4	6.00
5027-658-025-250	SBT50 x SKS25 - 250	351.8	250	207	55	55	M28 x 2.0P	3 ~ 25.4	6.70

**Features:**

- ▶ T.I.R. is within 5µm at a 4D distance.
- ▶ Using with 4° taper angle SKS collets achieves better clamping force and accuracy stability than 8° ER collets.
- ▶ Smaller OD nuts reduce interference. Standard revolution is G2.5 25,000RPM, suitable for high speed machining.
- ▶ Besides standard SKS clamping nut, SKS wind resistance nut and SKS sealed nut are available for customers to choose from (must purchase additionally).

**Product information:**

- ▶ Balance: G2.5 25,000 rpm. Higher balancing grade and revolution can be done upon request but additional charge is needed.
- ▶ AD+B type is available, please inform us when making an order.

**Standard Accessory: • NUT**

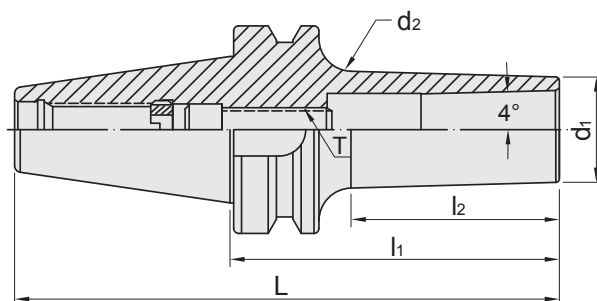
Collet	Nut	Pull Stud	Preset Screw	Spanner	Torque Wrench Adapter (Pull Stud)	Spanner (Pull Stud)
P.W-35~39	P.W-60~61	P.W-67~68	P.W-107	P.W-75~76、80	P.W-78	P.W-82



# SBT / SBL SLIM-FIT COLLET CHUCK

Dual  
DRIVE+

SBT / SBL 法蘭加厚型後拉式立銑刀夾頭



TW PAT NO. M274178

MODEL NO.	TYPE	L	l <sub>1</sub>	l <sub>2</sub>	d <sub>1</sub>	d <sub>2</sub>	T	RECOMMENDED TORQUE		SIZE RANGE	WEIGHT (KGS)
								N.m	1bf-ft		
5025-648-006-070	SBT30 x SBL6 - 70	118.4	70	38	14	18	M6 x 1.0P	12	9	3 ~ 6	0.60
5025-648-006-100	SBT30 x SBL6 - 100	148.4	100	68	14	21	M6 x 1.0P	12	9	3 ~ 6	1.25
5025-648-012-070	SBT30 x SBL12 - 70	118.4	70	47	26	33	M10 x 1.5P	45	33	3 ~ 12	1.20
5025-648-012-100	SBT30 x SBL12 - 100	148.4	100	77	26	38	M10 x 1.5P	45	33	3 ~ 12	1.45
5025-648-020-080	SBT30 x SBL20 - 80	128.4	80	55	34	37	M12 x 1.75P	60	44	3 ~ 20	1.20
5025-648-020-100	SBT30 x SBL20 - 100	148.4	100	77	34	39	M12 x 1.75P	60	44	3 ~ 20	1.45
5026-648-006-070	SBT40 x SBL6 - 70	135.4	70	28	14	17	M6 x 1.0P	12	9	3 ~ 6	1.07
5026-648-006-100	SBT40 x SBL6 - 100	165.4	100	58	14	20	M6 x 1.0P	12	9	3 ~ 6	1.14
5026-648-006-130	SBT40 x SBL6 - 130	195.4	130	88	14	23	M6 x 1.0P	12	9	3 ~ 6	1.23
5026-648-008-100	SBT40 x SBL8 - 100	165.4	100	58.7	20	26.1	M8 x 1.25P	29	21	3 ~ 8	1.25
5026-648-008-130	SBT40 x SBL8 - 130	195.4	130	93.5	20	29.8	M8 x 1.25P	29	21	3 ~ 8	1.38
5026-648-008-150	SBT40 x SBL8 - 150	215.4	150	113.5	20	31.8	M8 x 1.25P	29	21	3 ~ 8	1.50
5026-648-012-070	SBT40 x SBL12 - 70	135.4	70	33	26	31	M10 x 1.5P	45	33	3 ~ 12	1.14
5026-648-012-100	SBT40 x SBL12 - 100	165.4	100	63	26	31	M10 x 1.5P	45	33	3 ~ 12	1.29
5026-648-012-130	SBT40 x SBL12 - 130	195.4	130	93	26	34	M10 x 1.5P	45	33	3 ~ 12	1.47
5026-648-012-170	SBT40 x SBL12 - 170	235.4	170	133	26	37	M10 x 1.5P	45	33	3 ~ 12	1.76
5026-648-020-070	SBT40 x SBL20 - 70	135.4	70	33	35	38	M12 x 1.75P	60	44	3 ~ 20	1.50
5026-648-020-100	SBT40 x SBL20 - 100	165.4	100	68	35	40	M12 x 1.75P	60	44	3 ~ 20	1.70
5026-648-020-130	SBT40 x SBL20 - 130	195.4	130	98	35	43	M12 x 1.75P	60	44	3 ~ 20	1.74
5026-648-025-080	SBT40 x SBL25 - 80	145.4	80	50.1	40	44.3	M16 x 1.5P	90	66	6 ~ 25.4	1.70
5026-648-025-100	SBT40 x SBL25 - 100	165.4	100	70.1	40	46.1	M16 x 1.5P	90	66	6 ~ 25.4	1.90

**Features:**

- ▶ The design of non-clamping nut and slim front ends reduces interference, ideal for deep hole machining.
- ▶ Taper angle 4° increases the stability of clamping precision.
- ▶ T.I.R. is within 5µm at 4D distance.

**Product information:**

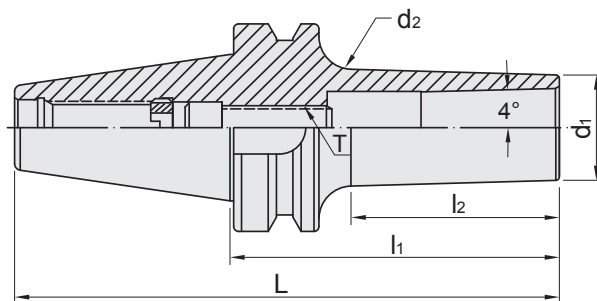
- ▶ Balance: G2.5 25,000 rpm. Higher balancing grade and revolution can be done upon request but additional charge is needed.

Collet	Pull Stud	Screw	Spanner	Torque Wrench Adapter (Pull Stud)	Spanner (Pull Stud)
P.W-40	P.W-67~68	P.W-110	P.W-80	P.W-78	P.W-82

# SBT / SBL SLIM-FIT COLLET CHUCK



## SBT / SBL 法蘭加厚型後拉式立銑刀夾頭



TW PAT NO. M274178

MODEL NO.	TYPE	L	l <sub>1</sub>	l <sub>2</sub>	d <sub>1</sub>	d <sub>2</sub>	T	RECOMMENDED TORQUE		SIZE RANGE	WEIGHT (KGS)
								N.m	1bf-ft		
5027-648-006-070	SBT50 x SBL6 - 70	171.8	70	17	14	15	M6 x 1.0P	12	9	3 ~ 6	4.00
5027-648-006-100	SBT50 x SBL6 - 100	201.8	100	47	14	19	M6 x 1.0P	12	9	3 ~ 6	4.10
5027-648-008-100	SBT50 x SBL8 - 100	201.8	100	47.7	20	25	M8 x 1.25P	29	21	3 ~ 8	3.78
5027-648-008-130	SBT50 x SBL8 - 130	231.8	130	77.7	20	28.1	M8 x 1.25P	29	21	3 ~ 8	3.92
5027-648-008-150	SBT50 x SBL8 - 150	251.8	150	97.7	20	30.2	M8 x 1.25P	29	21	3 ~ 8	4.04
5027-648-012-070	SBT50 x SBL12 - 70	171.8	70	22	26	28	M10 x 1.5P	45	33	3 ~ 12	4.20
5027-648-012-100	SBT50 x SBL12 - 100	201.8	100	52	26	30	M10 x 1.5P	45	33	3 ~ 12	4.30
5027-648-012-125	SBT50 x SBL12 - 125	226.8	125	77	26	32	M10 x 1.5P	45	33	3 ~ 12	4.40
5027-648-020-070	SBT50 x SBL20 - 70	171.8	70	22	35	36	M12 x 1.75P	60	44	3 ~ 20	4.60
5027-648-020-100	SBT50 x SBL20 - 100	201.8	100	52	35	39	M12 x 1.75P	60	44	3 ~ 20	4.70
5027-648-020-125	SBT50 x SBL20 - 125	226.8	125	77	35	41	M12 x 1.75P	60	44	3 ~ 20	4.22
5027-648-025-070	SBT50 x SBL25 - 70	171.8	70	22.4	40	41.9	M16 x 1.5P	90	66	6 ~ 25.4	4.80
5027-648-025-100	SBT50 x SBL25 - 100	201.8	100	52.4	40	44.5	M16 x 1.5P	90	66	6 ~ 25.4	5.00

### Features:

- ▶ The design of non-clamping nut and slim front ends reduces interference, ideal for deep hole machining.
- ▶ Taper angle 4° increases the stability of clamping precision.
- ▶ T.I.R. is within 5µm at 4D distance.

### Product information:

- ▶ Balance: G2.5 25,000 rpm. Higher balancing grade and revolution can be done upon request but additional charge is needed.

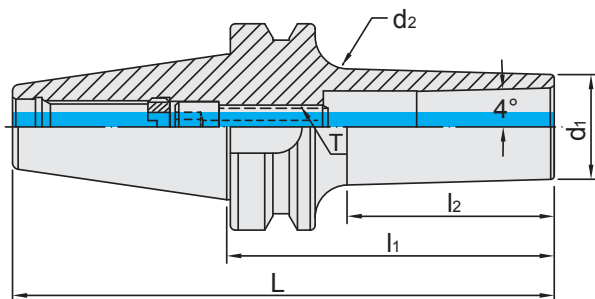
Collet	Pull Stud	Screw	Spanner	Torque Wrench Adapter (Pull Stud)	Spanner (Pull Stud)
P.W-40	P.W-67~68	P.W-110	P.W-80	P.W-78	P.W-82



# SBT / SBLC SLIM-FIT COLLET CHUCK

Dual  
DRIVE+

## SBT / SBLC 法蘭加厚型後拉式立銑刀夾頭



TW PAT NO. M274178

MODEL NO.	TYPE	L	l <sub>1</sub>	l <sub>2</sub>	d <sub>1</sub>	d <sub>2</sub>	T	RECOMMENDED TORQUE		SIZE RANGE	WEIGHT (KGS)
								N.m	1bf-ft		
5025-623-006-070	SBT30 x SBLC6 - 70	118.4	70	38	14	18	M6 x 1.0P	12	9	3 ~ 6	0.60
5025-623-006-100	SBT30 x SBLC6 - 100	148.4	100	68	14	21	M6 x 1.0P	12	9	3 ~ 6	1.25
5025-623-012-070	SBT30 x SBLC12 - 70	118.4	70	47	26	33	M10 x 1.5P	45	33	3 ~ 12	1.20
5025-623-012-100	SBT30 x SBLC12 - 100	148.4	100	77	26	38	M10 x 1.5P	45	33	3 ~ 12	1.45
5025-623-020-080	SBT30 x SBLC20 - 80	128.4	80	55	34	37	M12 x 1.75P	60	44	3 ~ 20	1.20
5025-623-020-100	SBT30 x SBLC20 - 100	148.4	100	77	34	39	M12 x 1.75P	60	44	3 ~ 20	1.45
5026-623-006-070	SBT40 x SBLC6 - 70	135.4	70	28	14	17	M6 x 1.0P	12	9	3 ~ 6	1.07
5026-623-006-100	SBT40 x SBLC6 - 100	165.4	100	58	14	20	M6 x 1.0P	12	9	3 ~ 6	1.14
5026-623-006-130	SBT40 x SBLC6 - 130	195.4	130	88	14	23	M6 x 1.0P	12	9	3 ~ 6	1.23
5026-623-008-100	SBT40 x SBLC8 - 100	165.4	100	58.7	20	26.1	M8 x 1.25P	29	21	3 ~ 8	1.25
5026-623-008-130	SBT40 x SBLC8 - 130	195.4	130	93.5	20	29.8	M8 x 1.25P	29	21	3 ~ 8	1.38
5026-623-008-150	SBT40 x SBLC8 - 150	215.4	150	113.5	20	31.8	M8 x 1.25P	29	21	3 ~ 8	1.50
5026-623-012-070	SBT40 x SBLC12 - 70	135.4	70	33	26	31	M10 x 1.5P	45	33	3 ~ 12	1.14
5026-623-012-100	SBT40 x SBLC12 - 100	165.4	100	63	26	31	M10 x 1.5P	45	33	3 ~ 12	1.29
5026-623-012-130	SBT40 x SBLC12 - 130	195.4	130	93	26	34	M10 x 1.5P	45	33	3 ~ 12	1.47
5026-623-012-170	SBT40 x SBLC12 - 170	235.4	170	133	26	37	M10 x 1.5P	45	33	3 ~ 12	1.76
5026-623-012-200	SBT40 x SBLC12 - 200	265.4	200	168	26	40	M10 x 1.5P	45	33	3 ~ 12	1.92
5026-623-020-070	SBT40 x SBLC20 - 70	135.4	70	33	35	38	M12 x 1.75P	60	44	3 ~ 20	1.50
5026-623-020-100	SBT40 x SBLC20 - 100	165.4	100	68	35	40	M12 x 1.75P	60	44	3 ~ 20	1.70
5026-623-020-130	SBT40 x SBLC20 - 130	195.4	130	98	35	43	M12 x 1.75P	60	44	3 ~ 20	1.74
5026-623-025-080	SBT40 x SBLC25 - 80	145.4	80	50.1	40	44.3	M16 x 1.5P	90	66	6 ~ 25.4	1.70
5026-623-025-100	SBT40 x SBLC25 - 100	165.4	100	70.1	40	46.1	M16 x 1.5P	90	66	6 ~ 25.4	1.90

### Features:

- ▶ SBLC collet chuck used for center coolant improves the metal chip removal capability and the surface finish of the workpiece.
- ▶ The design of non-clamping nut and slim front ends reduces interference, ideal for deep hole machining.
- ▶ T.I.R. is within 5μm at 4D distance.
- ▶ Taper angle 4° increases the stability of clamping precision.

### Product information:

- ▶ Balance: G2.5 25,000 rpm. Higher balancing grade and revolution can be done upon request but additional charge is needed.
- ▶ AD+B type is available, please inform us when making an order.
- ▶ SBT30 tool holders are without coolant supply over collars.
- ▶ Used with SLC sealed collet and coolant through cutters.

### Standard Accessory: • SPANNER

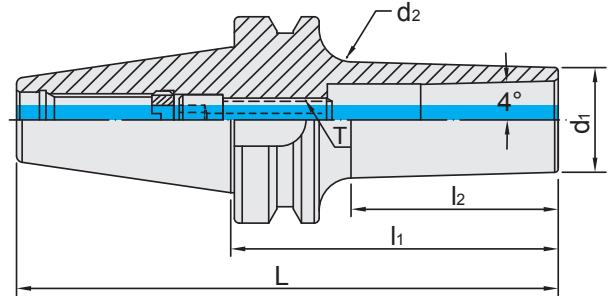
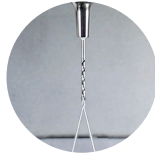
Sealed Collet	Pull Stud	Screw	Spanner	Torque Wrench Adapter (Pull Stud)	Spanner (Pull Stud)
P.W-41	P.W-67~68	P.W-110	P.W-80	P.W-78	P.W-82



# SBT / SBLC SLIM-FIT COLLET CHUCK

Dual  
DRIVE+

SBT / SBLC 法蘭加厚型後拉式立銑刀夾頭



TW PAT NO. M274178

MODEL NO.	TYPE	L	l <sub>1</sub>	l <sub>2</sub>	d <sub>1</sub>	d <sub>2</sub>	T	RECOMMENDED TORQUE		SIZE RANGE	WEIGHT (KGS)
								N.m	1bf-ft		
5027-623-006-070	SBT50 x SBLC6 - 70	171.8	70	17	14	15	M6 x 1.0P	12	9	3 ~ 6	4.00
5027-623-006-100	SBT50 x SBLC6 - 100	201.8	100	47	14	19	M6 x 1.0P	12	9	3 ~ 6	4.10
5027-623-008-100	SBT50 x SBLC8 - 100	201.8	100	47.7	20	25	M8 x 1.25P	29	21	3 ~ 8	3.78
5027-623-008-130	SBT50 x SBLC8 - 130	231.8	130	77.7	20	28.1	M8 x 1.25P	29	21	3 ~ 8	3.92
5027-623-008-150	SBT50 x SBLC8 - 150	251.8	150	97.7	20	30.2	M8 x 1.25P	29	21	3 ~ 8	4.04
5027-623-012-070	SBT50 x SBLC12 - 70	171.8	70	22	26	28	M10 x 1.5P	45	33	3 ~ 12	4.20
5027-623-012-100	SBT50 x SBLC12 - 100	201.8	100	52	26	30	M10 x 1.5P	45	33	3 ~ 12	4.30
5027-623-012-125	SBT50 x SBLC12 - 125	226.8	125	77	26	32	M10 x 1.5P	45	33	3 ~ 12	4.40
5027-623-020-070	SBT50 x SBLC20 - 70	171.8	70	22	35	36	M12 x 1.75P	60	44	3 ~ 20	4.60
5027-623-020-100	SBT50 x SBLC20 - 100	201.8	100	52	35	39	M12 x 1.75P	60	44	3 ~ 20	4.70
5027-623-020-125	SBT50 x SBLC20 - 125	226.8	125	77	35	41	M12 x 1.75P	60	44	3 ~ 20	4.22
5027-623-025-070	SBT50 x SBLC25 - 70	171.8	70	22.4	40	41.9	M16 x 1.5P	90	66	6 ~ 25.4	4.80
5027-623-025-100	SBT50 x SBLC25 - 100	201.8	100	52.4	40	44.5	M16 x 1.5P	90	66	6 ~ 25.4	5.00

**Features:**

- ▶ SBLC collet chuck used for center coolant improves the metal chip removal capability and the surface finish of the workpiece.
- ▶ The design of non-clamping nut and slim front ends reduces interference, ideal for deep hole machining.
- ▶ T.I.R. is within 5µm at 4D distance.
- ▶ Taper angle 4° increases the stability of clamping precision.

**Product information:**

- ▶ Balance: G2.5 25,000 rpm. Higher balancing grade and revolution can be done upon request but additional charge is needed.
- ▶ AD+B type is available, please inform us when making an order.
- ▶ Used with SLC sealed collet and coolant through cutters.

**Standard Accessory: • SPANNER**

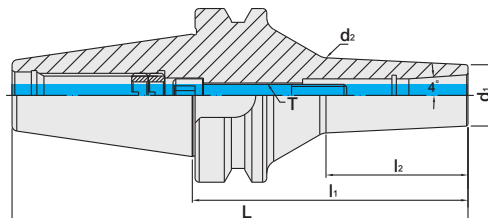
Sealed Collet	Pull Stud	Screw	Spanner	Torque Wrench Adapter (Pull Stud)	Spanner (Pull Stud)
P.W-41	P.W-67~68	P.W-110	P.W-80	P.W-78	P.W-82



# SBT / EBL SLIM-FIT COLLET CHUCK

Dual  
DRIVE+

SBT / EBL 法蘭加厚型後拉式刀桿



MODEL NO.	TYPE	L	l <sub>1</sub>	l <sub>2</sub>	d <sub>1</sub>	d <sub>2</sub>	T	RECOMMENDED TORQUE		SIZE RANGE	WEIGHT (KGS)
								N.m	lbf-ft		
5025-277-006-070	SBT30 x EBL6 - 70	118.4	70	40.6	19.05	23	M6 x 1.0P	12	9	3 ~ 6	0.51
5025-277-006-100	SBT30 x EBL6 - 100	148.4	100	72.2	19.05	26	M6 x 1.0P	12	9	3 ~ 6	0.62
5026-277-006-070	SBT40 x EBL6 - 70	135.4	70	29.9	19.05	21.9	M6 x 1.0P	12	9	3 ~ 6	1.10
5026-277-006-100	SBT40 x EBL6 - 100	165.4	100	61.4	19.05	25	M6 x 1.0P	12	9	3 ~ 6	1.20
5026-277-008-070	SBT40 x EBL8 - 70	135.4	70	28.2	22.225	24.9	M8 x 1.25P	29	21	3 ~ 8	1.12
5026-277-008-100	SBT40 x EBL8 - 100	165.4	100	51.5	22.225	27.6	M8 x 1.25P	29	21	3 ~ 8	1.24
5027-277-006-070	SBT50 x EBL6 - 70	171.8	70	18.3	19.05	20.8	M6 x 1.0P	12	9	3 ~ 6	3.68
5027-277-006-100	SBT50 x EBL6 - 100	201.8	100	49.9	19.05	23.9	M6 x 1.0P	12	9	3 ~ 6	3.77
5027-277-008-070	SBT50 x EBL8 - 70	171.8	70	16.6	22.225	23.8	M8 x 1.25P	29	21	3 ~ 8	3.74
5027-277-008-100	SBT50 x EBL8 - 100	201.8	100	48.2	22.225	26.9	M8 x 1.25P	29	21	3 ~ 8	3.84



▶ SBL



▶ EBL

### Features:

- ▶ EBL collet with extended length shortens tool overhanging length and improves the machining stability.
- ▶ The optimized design of thicker neck improves the machining rigidity and eliminates vibration, resulting in excellent surface finish of workpiece.
- ▶ Collet types: EBL collet and EBL sealed collets. The latter is capable of coolant pressure up to 25bar.

### Product information:

- ▶ Balance: G2.5 25,000rpm.
- ▶ AD+B type is available, please inform us when making an order.
- ▶ SBT30 tool holders are without coolant supply over collars.

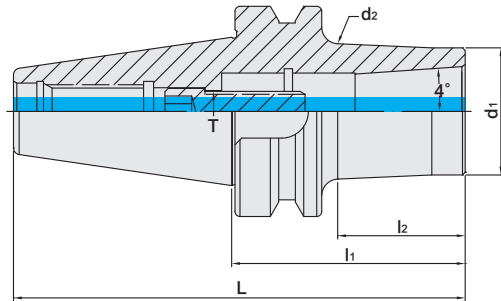
### Standard Accessory: • SPANNER

Collet	Sealed Collet	Pull Stud	Spanner	Torque Wrench Adapter (Pull Stud)	Spanner (Pull Stud)	Screw
P.W-42	P.W-42	P.W-67~68	P.W-80	P.W-78	P.W-82	P.W-110

# SBT / HBL SLIM-FIT COLLET CHUCK



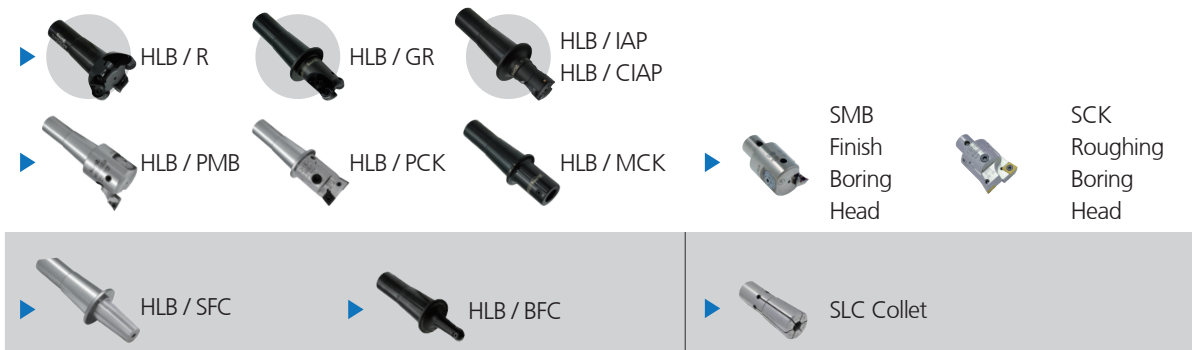
## SBT / HBL 法蘭加厚型後拉式立銑刀夾頭



TW PAT NO. M488361  
J P PAT NO. 3193771  
D E PAT NO. Nr.202014103

MODEL NO.	TYPE	L	l <sub>1</sub>	l <sub>2</sub>	d <sub>1</sub>	d <sub>2</sub>	T	WEIGHT (KGS)
5025-275-012-070	SBT30 x HBL12 - 70	118.4	70	47	31.75	34.9	M10 x 1.5P	1.40
5025-275-012-100	SBT30 x HBL12 - 100	148.4	100	77	31.75	37.6	M10 x 1.5P	1.65
5025-275-020-080	SBT30 x HBL20 - 80	128.4	80	56	38.1	42.1	M12 x 1.75P	1.40
5025-275-020-100	SBT30 x HBL20 - 100	148.4	100	76	38.1	43.9	M12 x 1.75P	1.65
5026-275-012-070	SBT40 x HBL12 - 70	135.4	70	33	31.75	33.7	M10 x 1.5P	1.70
5026-275-012-100	SBT40 x HBL12 - 100	165.4	100	63	31.75	36.4	M10 x 1.5P	1.90
5026-275-020-070	SBT40 x HBL20 - 70	135.4	70	38	38.1	40.5	M12 x 1.75P	1.70
5026-275-020-100	SBT40 x HBL20 - 100	165.4	100	68	38.1	43.1	M12 x 1.75P	1.90
5026-275-025-080	SBT40 x HBL25 - 80	145.4	80	50	44.45	47.9	M16 x 1.5P	1.90
5026-275-025-100	SBT40 x HBL25 - 100	165.4	100	70	44.45	49.7	M16 x 1.5P	2.10
5027-275-012-070	SBT50 x HBL12 - 70	171.8	70	22	31.75	32.8	M10 x 1.5P	4.40
5027-275-012-100	SBT50 x HBL12 - 100	201.8	100	52	31.75	35.4	M10 x 1.5P	4.50
5027-275-020-070	SBT50 x HBL20 - 70	171.8	70	22	38.1	39.1	M12 x 1.75P	4.80
5027-275-020-100	SBT50 x HBL20 - 100	201.8	100	52	38.1	41.8	M12 x 1.75P	4.90
5027-275-025-070	SBT50 x HBL25 - 70	171.8	70	22	44.45	45.5	M16 x 1.5P	5.00
5027-275-025-100	SBT50 x HBL25 - 100	201.8	100	54	44.45	48.4	M16 x 1.5P	5.20

### HLB Cutter for HBL Slim-Fit Collet Chuck



#### Features:

- ▶ Two-face contact between collet taper, collet flange and the end of HBL tool holder, increases the rigidity of machining.
- ▶ Modular system, assembled with HLB tools.
- ▶ HBL drawbar clamping design strengthens the axial clamping force.

#### Product information:

- ▶ When assembling with coolant through HLB cutter SLC sealed collet, please change the screw into coolant screw, which is available to order separately.
- ▶ Balance: G2.5 25,000 rpm. Higher balancing grade and revolution can be done upon request but additional charge is needed.
- ▶ AD+B type is available, please inform us when making an order.
- ▶ SBT30 tool holders are without coolant supply over collars.

Pull Stud	Screw	Spanner	HLB CUTTER	SLC Collet	Torque Wrench Adapter (Pull Stud)	Spanner (Pull Stud)
P.W-67~68	P.W-110	P.W-80	P.W-83~97	P.W-39~40	P.W-78	P.W-82



# SBT / MLD MULTI - LOCK MILLING CHUCK

Dual  
DRIVE+

SBT / MLD 法蘭加厚型直式筒夾 銑床夾頭


  
台灣精品 2007  
TAIWAN EXCELLENCE


Fig.1

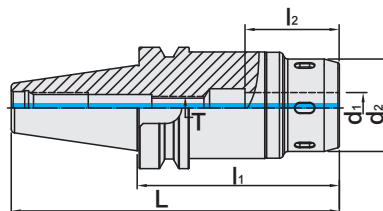
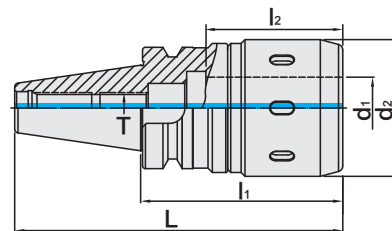


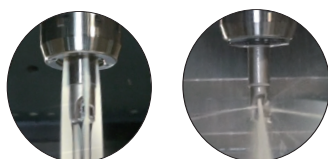
Fig.2



TW PAT NO. M447277  
TW PAT NO. M430337  
TW PAT NO. M451185  
C N PAT NO. ZL201220749784.4  
C H PAT NO. ZL201220749942.6

## METRIC

MODEL NO.	TYPE	L	l <sub>1</sub>	l <sub>2</sub>	d <sub>1</sub>	d <sub>2</sub>	T	Fig	WEIGHT (KGS)
5025-460-012-080	SBT30 x MLD12 - 80	128.4	80	46.7	12	42	M12 x 1.75P	2	1.00
5025-460-016-075	SBT30 x MLD16 - 75	123.4	75	56.7	16	48	M12 x 1.75P	1	1.20
5025-460-020-080	SBT30 x MLD20 - 80	128.4	80	59.3	20	56.5	M12 x 1.75P	2	1.90
5025-460-020-090	SBT30 x MLD20 - 90	138.4	90	59.3	20	56.5	M16 x 2.0P	2	2.00
5025-460-025-090	SBT30 x MLD25 - 90	138.4	90	58.2	25	60	M16 x 2.0P	2	1.80
5026-460-012-075	SBT40 x MLD12 - 75	140.4	75	46.7	12	42	M12 x 1.75P	1	1.50
5026-460-012-105	SBT40 x MLD12 - 105	170.4	105	46.7	12	42	M12 x 1.75P	1	2.00
5026-460-012-135	SBT40 x MLD12 - 135	200.4	135	46.7	12	42	M12 x 1.75P	1	2.10
5026-460-016-075	SBT40 x MLD16 - 75	140.4	75	56.7	16	48	M12 x 1.75P	1	1.70
5026-460-016-105	SBT40 x MLD16 - 105	170.4	105	56.7	16	48	M12 x 1.75P	1	2.30
5026-460-016-135	SBT40 x MLD16 - 135	200.4	135	56.7	16	48	M12 x 1.75P	1	2.40
5026-460-020-080	SBT40 x MLD20 - 80	145.4	80	59.3	20	56.5	M16 x 2.0P	1	2.30
5026-460-020-100	SBT40 x MLD20 - 100	165.4	100	59.3	20	56.5	M16 x 2.0P	1	2.50
5026-460-020-135	SBT40 x MLD20 - 135	200.4	135	59.3	20	56.5	M16 x 2.0P	1	2.80
5026-460-025-085	SBT40 x MLD25 - 85	150.4	85	58.2	25	60	M16 x 2.0P	1	2.20
5026-460-025-100	SBT40 x MLD25 - 100	165.4	100	58.2	25	60	M16 x 2.0P	1	2.40
5026-460-032-095	SBT40 x MLD32 - 95	160.4	95	71.7	32	71	M16 x 2.0P	2	2.70
5026-460-032-105	SBT40 x MLD32 - 105	170.4	105	71.7	32	71	M16 x 2.0P	2	2.70
5026-460-032-135	SBT40 x MLD32 - 135	200.4	135	71.7	32	71	M16 x 2.0P	2	3.00



### Features:

- ▶ The special slotted design of the internal hole increases the clamping force and decreases vibration, making this milling chuck set suitable for heavy-duty machining.
- ▶ Collet runout accuracy: HSC collet 5μm and SSC collet 20μm two options to choose from.
- ▶ After fastening, the nuts and tool holders contact tight to enhance the cutting rigidity and achieve dustproof purposes.
- ▶ Coolant options: through the center of the holder or cutter. Use a sealed cap and SR ring for coolant through the cutter.

### Product information:

- ▶ AD+B type is available, please inform us when making an order.
- ▶ SBT30 tool holders are without coolant supply over collars.

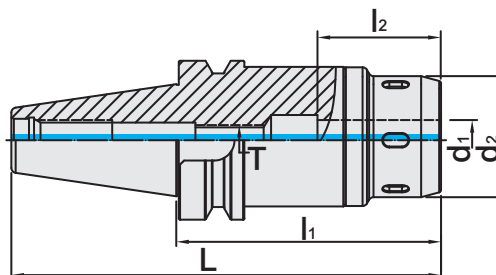
### Standard Accessory: • NUT

Collet	Sealed Cap	SR Sealed Ring	Pull Stud	Set Screw	Spanner	Spanner	Torque Wrench Adapter (Pull Stud)	Spanner (Pull Stud)
P.W-45~46	P.W-65	P.W-66	P.W-67~68	P.W-107	P.W-79~80	P.W-81	P.W-78	P.W-82

# SBT / MLD MULTI - LOCK MILLING CHUCK

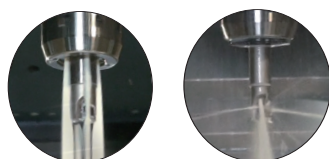


SBT / MLD 法蘭加厚型直式筒夾 銑床夾頭



TW PAT NO. M447277  
 TW PAT NO. M430337  
 TW PAT NO. M451185  
 C N PAT NO. ZL201220749784.4  
 C H PAT NO. ZL201220749942.6

MODEL NO.	TYPE	L	l <sub>1</sub>	l <sub>2</sub>	d <sub>1</sub>	d <sub>2</sub>	T	WEIGHT (KGS)
5027-460-012-105	SBT50 x MLD12 - 105	206.8	105	46.7	12	42	M12 x 1.75P	4.60
5027-460-012-135	SBT50 x MLD12 - 135	236.8	135	46.7	12	42	M12 x 1.75P	5.10
5027-460-012-165	SBT50 x MLD12 - 165	266.8	165	46.7	12	42	M12 x 1.75P	5.80
5027-460-016-105	SBT50 x MLD16 - 105	206.8	105	56.7	16	48	M12 x 1.75P	4.90
5027-460-016-135	SBT50 x MLD16 - 135	236.8	135	56.7	16	48	M12 x 1.75P	5.60
5027-460-016-165	SBT50 x MLD16 - 165	266.8	165	56.7	16	48	M12 x 1.75P	6.50
5027-460-020-105	SBT50 x MLD20 - 105	206.8	105	59.3	20	56.5	M16 x 2.0P	4.50
5027-460-020-150	SBT50 x MLD20 - 150	251.8	150	59.3	20	56.5	M16 x 2.0P	4.90
5027-460-025-100	SBT50 x MLD25 - 100	201.8	100	58.2	25	60	M16 x 2.0P	4.80
5027-460-025-130	SBT50 x MLD25 - 130	231.8	130	58.2	25	60	M16 x 2.0P	5.70
5027-460-032-105	SBT50 x MLD32 - 105	206.8	105	71.7	32	71	M24 x 3.0P	5.00
5027-460-032-135	SBT50 x MLD32 - 135	236.8	135	71.7	32	71	M24 x 3.0P	5.20
5027-460-032-165	SBT50 x MLD32 - 165	266.8	165	71.7	32	71	M24 x 3.0P	6.70
5027-460-042-115	SBT50 x MLD42 - 115	216.8	115	84.8	42	90	M24 x 3.0P	5.50
5027-460-042-130	SBT50 x MLD42 - 130	231.8	130	84.8	42	90	M24 x 3.0P	6.50
5027-460-042-165	SBT50 x MLD42 - 165	266.8	165	84.8	42	90	M24 x 3.0P	7.70



**Features:**

- ▶ The special slotted design of the internal hole increases the clamping force and decreases vibration, making this milling chuck set suitable for heavy-duty machining.
- ▶ Collet runout accuracy: HSC collet 5µm and SSC collet 20µm two options to choose from.
- ▶ After fastening, the nuts and tool holders contact tight to enhance the cutting rigidity and achieve dustproof purposes.
- ▶ Coolant options: through the center of the holder or cutter. Use a sealed cap and SR ring for coolant through the cutter.

**Product information:**

- ▶ AD+B type is available, please inform us when making an order.

**Standard Accessory: • NUT**

Collet	Sealed Cap	SR Sealed Ring	Pull Stud	Set Screw	Spanner	Spanner	Torque Wrench Adapter (Pull Stud)	Spanner (Pull Stud)
P.W-45~46	P.W-65	P.W-66	P.W-67~68	P.W-107	P.W-79~80	P.W-81	P.W-78	P.W-82



# SBT / MLD MULTI - LOCK MILLING CHUCK

Dual  
DRIVE+

SBT / MLD 法蘭加厚型直式筒夾 銑床夾頭

台灣精品 2007  
TAIWAN EXCELLENCE



TW PAT NO. M447277  
TW PAT NO. M430337  
TW PAT NO. M451185  
C N PAT NO. ZL201220749784.4  
C H PAT NO. ZL201220749942.6

Fig.1

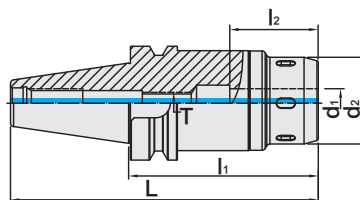
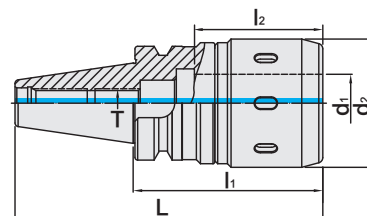
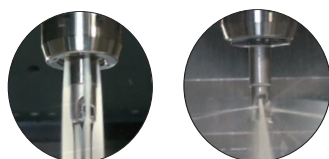


Fig.2



**INCHES**

MODEL NO.	TYPE	L	l <sub>1</sub>	l <sub>2</sub>	d <sub>1</sub>	d <sub>2</sub>	T	Fig	WEIGHT (KGS)
5025-460-A32-315	SBT30 x MLD1/2" - 3.15"	5.05	3.15	1.84	0.5	1.654	M12 x 1.75P	2	1.00
5025-460-A40-295	SBT30 x MLD5/8" - 2.95"	4.86	2.95	2.23	0.625	1.889	M12 x 1.75P	1	1.20
5025-460-A48-354	SBT30 x MLD3/4" - 3.54"	5.449	3.54	2.34	0.75	2.224	M12 x 1.75P	2	1.90
5025-460-A64-354	SBT30 x MLD1" - 3.54"	5.449	3.54	2.49	1	2.36	M16 x 2.0P	2	1.80
5026-460-A32-295	SBT40 x MLD1/2" - 2.95"	5.528	2.95	1.84	0.5	1.654	M12 x 1.75P	1	1.50
5026-460-A40-295	SBT40 x MLD5/8" - 2.95"	5.528	2.95	2.23	0.625	1.889	M12 x 1.75P	1	1.70
5026-460-A48-315	SBT40 x MLD3/4" - 3.15"	5.724	3.15	2.34	0.75	2.224	M16 x 2.0P	1	2.30
5026-460-A64-335	SBT40 x MLD1" - 3.35"	5.921	3.35	2.49	1	2.36	M16 x 2.0P	1	2.20
5026-460-A72-400	SBT40 x MLD1-1/4" - 4"	6.575	4	2.8	1.25	2.795	M16 x 2.0P	2	2.70
5027-460-A32-400	SBT50 x MLD1/2" - 4"	8.008	4	1.84	0.5	1.654	M12 x 1.75P	1	4.60
5027-460-A40-400	SBT50 x MLD5/8" - 4"	8.008	4	2.23	0.625	1.889	M12 x 1.75P	1	4.90
5027-460-A48-400	SBT50 x MLD3/4" - 4"	8.008	4	2.34	0.75	2.224	M16 x 2.0P	1	4.50
5027-460-A64-413	SBT50 x MLD1" - 4.13"	8.14	4.13	2.49	1	2.36	M16 x 2.0P	1	4.80
5027-460-A64-512	SBT50 x MLD1" - 5.12"	9.126	5.12	2.49	1	2.36	M16 x 2.0P	1	5.70
5027-460-A72-400	SBT50 x MLD1 - 1/4" - 4"	8.008	4	2.8	1.25	2.795	M24 x 3.0P	1	4.90



**Features:**

- ▶ The special slotted design of the internal hole increases the clamping force and decreases vibration, making this milling chuck set suitable for heavy-duty machining.
- ▶ Collet runout accuracy: HSC collet 5µm and SSC collet 20µm two options to choose from.
- ▶ After fastening, the nuts and tool holders contact tight to enhance the cutting rigidity and achieve dustproof purposes.
- ▶ Coolant options: through the center of the holder or cutter. Use a sealed cap and SR ring for coolant through the cutter.

**Product information:**

- ▶ AD+B type is available, please inform us when making an order.
- ▶ SBT30 tool holders are without coolant supply over collars.

**Standard Accessory: • NUT**

Collet	Sealed Cap	SR Sealed Ring	Pull Stud	Set Screw	Spanner	Spanner	Torque Wrench Adapter (Pull Stud)	Spanner (Pull Stud)
P.W-45~46	P.W-65	P.W-66	P.W-67~68	P.W-107	P.W-77~78	P.W-79	P.W-78	P.W-82

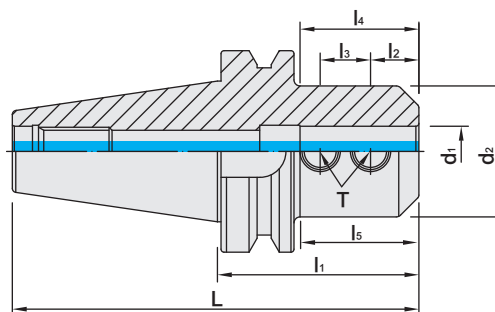


# SBT / SLN SIDE LOCK END MILL HOLDER

Dual  
DRIVE+

SBT / SLN 法蘭加厚型側固式立銑刀桿

(DIN ISO 1835)



MODEL NO.	TYPE	L	l <sub>1</sub>	l <sub>2</sub>	l <sub>3</sub>	l <sub>4</sub>	l <sub>5</sub>	d <sub>1</sub>	d <sub>2</sub>	T	WEIGHT (KGS)
5025-653-006-060	SBT30 x SLN6 - 60	108.4	60	18	-	35	33	6	25	M6 x 1.0P	0.55
5025-653-008-060	SBT30 x SLN8 - 60	108.4	60	18	-	35	33	8	28	M8 x 1.25P	0.60
5025-653-010-060	SBT30 x SLN10 - 60	108.4	60	20	-	39	35	10	35	M10 x 1.5P	0.70
5025-653-012-060	SBT30 x SLN12 - 60	108.4	60	22.5	-	44	36	12	42	M12 x 1.75P	0.75
5025-653-016-075	SBT30 x SLN16 - 75	123.4	75	24	-	47	53	16	48	M14 x 2.0P	1.05
5025-653-020-075	SBT30 x SLN20 - 75	123.4	75	25	-	49	53	20	52	M16 x 2.0P	1.10
5025-653-025-090	SBT30 x SLN25 - 90	138.4	90	24	25	58	68	25	65	M18 x 2.0P	1.70
5026-653-006-050	SBT40 x SLN6 - 50	115.4	50	18	-	35	20	6	25	M6 x 1.0P	1.10
5026-653-006-150	SBT40 x SLN6 - 150	215.4	150	18	-	35	113	6	25	M6 x 1.0P	1.32
5026-653-008-050	SBT40 x SLN8 - 50	115.4	50	18	-	35	20	8	28	M8 x 1.25P	1.10
5026-653-008-150	SBT40 x SLN8 - 150	215.4	150	18	-	35	113	8	28	M8 x 1.25P	1.30
5026-653-010-063	SBT40 x SLN10 - 63	128.4	63	20	-	39	33.5	10	35	M10 x 1.5P	1.25
5026-653-010-150	SBT40 x SLN10 - 150	215.4	150	20	-	39	113	10	35	M10 x 1.5P	1.40
5026-653-012-063	SBT40 x SLN12 - 63	128.4	63	22.5	-	44	33.5	12	42	M12 x 1.75P	1.30
5026-653-012-150	SBT40 x SLN12 - 150	215.4	150	22.5	-	44	116	12	42	M12 x 1.75P	1.53
5026-653-016-063	SBT40 x SLN16 - 63	128.4	63	24	-	47	33.5	16	48	M14 x 2.0P	1.40
5026-653-016-150	SBT40 x SLN16 - 150	215.4	150	24	-	47	120	16	48	M14 x 2.0P	1.60
5026-653-018-063	SBT40 x SLN18 - 63	128.4	63	24	-	44	33	18	50	M14 x 2.0P	1.65
5026-653-020-063	SBT40 x SLN20 - 63	128.4	63	25	-	49	33	20	52	M16 x 2.0P	1.40
5026-653-025-100	SBT40 x SLN25 - 100	165.4	100	24	25	58	73	25	65	M18 x 2.0P	2.50
5026-653-032-100	SBT40 x SLN32 - 100	165.4	100	24	28	63	73	32	72	M20 x 2.0P	2.75

## Features:

- ▶ Internal hole tolerance: H5 (DIN-1835-B standard).
- ▶ The tolerance requirement of tool shank diameter is h6.
- ▶ Taking use of side lock screws to clamp tools with lateral flat surfaces. Good at heavy-duty machining.

## Product information:

- ▶ The pre-balance reaches G6.3 8,000 rpm. Higher balancing grade and revolution can be done upon request but additional charge is needed.
- ▶ AD+B type is available, please inform us when making an order.
- ▶ SBT30 tool holders are without coolant supply over collars.

## Standard Accessory: • LOCK SCREW

Pull Stud	Lock Screw	Torque Wrench Adapter (Pull Stud)	Spanner (Pull Stud)
P.W-67~68	P.W-109	P.W-78	P.W-82

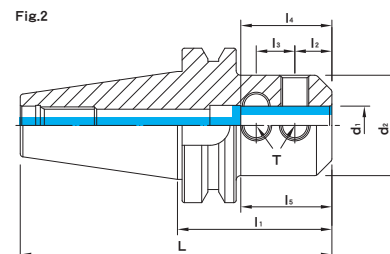
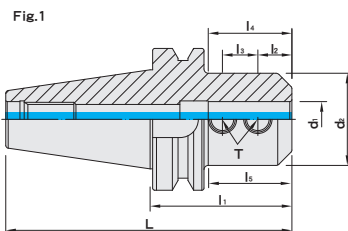


# SBT / SLN SIDE LOCK END MILL HOLDER

Dual  
DRIVE+

SBT / SLN 法蘭加厚型側固式立銑刀桿

(DIN ISO 1835)



MODEL NO.	TYPE	L	l <sub>1</sub>	l <sub>2</sub>	l <sub>3</sub>	l <sub>4</sub>	l <sub>5</sub>	d <sub>1</sub>	d <sub>2</sub>	Fig	T	WEIGHT (KGS)
5027-653-006-063	SBT50 x SLN6 - 63	164.8	63	18	-	35	20	6	25	1	M6 x 1.0P	3.80
5027-653-008-063	SBT50 x SLN8 - 63	164.8	63	18	-	39	20	8	28	1	M8 x 1.25P	3.80
5027-653-010-063	SBT50 x SLN10 - 63	164.8	63	20	-	39	22	10	35	1	M10 x 1.5P	3.00
5027-653-012-080	SBT50 x SLN12 - 80	181.8	80	22.5	-	44	39	12	42	1	M12 x 1.75P	4.00
5027-653-016-080	SBT50 x SLN16 - 80	181.8	80	24	-	47	37	16	48	1	M14 x 2.0P	4.40
5027-653-020-080	SBT50 x SLN20 - 80	181.8	80	25	-	49	37	20	52	1	M16 x 2.0P	4.40
5027-653-025-100	SBT50 x SLN25 - 100	201.8	100	24	25	58	59	25	65	1	M18 x 2.0P	5.10
5027-653-032-105	SBT50 x SLN32 - 105	206.8	105	24	28	63	64	32	72	1	M20 x 2.0P	5.20
5027-653-040-115	SBT50 x SLN40 - 115	216.8	115	30	32	75	74	40	90	1	M20 x 2.0P	6.70
5027-653-040-120	SBT50 x SLN40 - 120	221.8	120	30	32	75	79	40	90	1	M20 x 2.0P	6.70
5027-653-042-120	SBT50 x SLN42 - 120	221.8	120	30	32	75	79	42	90	1	M20 x 2.0P	6.70
5027-653-050-120	SBT50 x SLN50 - 120	221.8	120	35	35	78	82	50	98	1	M24 x 2.0P	6.80
5027-653-A96-472	SBT50 x SLN50.8 - 120	221.8	120	33.1	28.58	80	82	50.8	99	1	M20 x 2.0P	6.80
5027-677-A96-472	SBT50 x SLN50.8 - 120	221.8	120	33.1	28.58	75	81	50.8	95	2	M20 x 2.0P	7.20

### Features:

- ▶ Internal hole tolerance: H5 (DIN-1835-B standard).
- ▶ The tolerance requirement of tool shank diameter is h6.
- ▶ Taking use of side lock screws to clamp tools with lateral flat surfaces. Good at heavy-duty machining.

### Product information:

- ▶ The pre-balance reaches G6.3 8,000 rpm. Higher balancing grade and revolution can be done upon request but additional charge is needed.
- ▶ AD+B type is available, please inform us when making an order.

### Standard Accessory: • LOCK SCREW

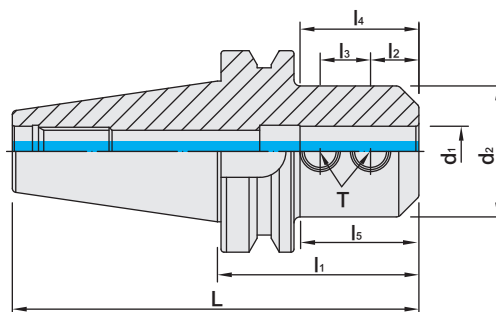
Pull Stud	Lock Screw	Torque Wrench Adapter (Pull Stud)	Spanner (Pull Stud)
P.W-67~68	P.W-109	P.W-78	P.W-82



# SBT / SLN SIDE LOCK END MILL HOLDER

Dual  
DRIVE+

SBT / SLN 法蘭加厚型側固式立銑刀桿



INCHES

MODEL NO.	TYPE	L	l <sub>1</sub>	l <sub>2</sub>	l <sub>3</sub>	l <sub>4</sub>	l <sub>5</sub>	d <sub>1</sub>	d <sub>2</sub>	T	WEIGHT (KGS)
5025-653-A08-236	SBT30 x SLN1/8" - 2.36"	4.265	2.36	0.37	-	0.787	1.299	0.125	0.69	#6 - 32	0.43
5025-653-A12-236	SBT30 x SLN3/16" - 2.36"	4.265	2.36	0.562	-	0.984	1.102	0.1875	0.69	#8 - 32	0.44
5025-653-A16-236	SBT30 x SLN1/4" - 2.36"	4.265	2.36	0.629	-	1.378	1.181	0.25	0.78	1/4" - 28	0.45
5025-653-A20-236	SBT30 x SLN5/16" - 2.36"	4.265	2.36	0.6	-	1.378	1.181	0.3125	0.88	5/16" - 24	0.47
5025-653-A24-236	SBT30 x SLN3/8" - 2.36"	4.265	2.36	0.781	-	1.535	1.299	0.375	1	3/8" - 24	0.48
5025-653-A28-236	SBT30 x SLN7/16" - 2.36"	4.265	2.36	0.812	-	1.535	1.299	0.4375	1.13	7/16" - 20	0.51
5025-653-A32-236	SBT30 x SLN1/2" - 2.36"	4.265	2.36	0.875	-	1.732	1.378	0.5	1.25	7/16" - 20	0.54
5025-653-A40-236	SBT30 x SLN5/8" - 2.36"	4.265	2.36	0.937	-	1.85	1.417	0.625	1.5	1/2" - 20	0.61
5025-653-A40-300	SBT30 x SLN5/8" - 3"	4.906	3	0.937	-	1.85	2.094	0.625	1.5	1/2" - 20	0.73
5025-653-A48-236	SBT30 x SLN3/4" - 2.36"	4.265	2.36	1	-	1.929	1.494	0.75	1.75	5/8" - 18	0.65
5025-653-A64-400	SBT30 x SLN1" - 4"	5.906	4	1.125	1	2.559	2.818	1	2	3/4" - 16	1.15

**Features:**

- ▶ Internal hole tolerance: H5 (DIN-1835-B standard).
- ▶ The tolerance requirement of tool shank diameter is h6.
- ▶ Taking use of side lock screws to clamp tools with lateral flat surfaces. Good at heavy-duty machining.

**Product information:**

- ▶ The pre-balance reaches G6.3 8,000 rpm. Higher balancing grade and revolution can be done upon request but additional charge is needed.
- ▶ SBT30 tool holders are without coolant supply over collars.

**Standard Accessory: • LOCK SCREW**

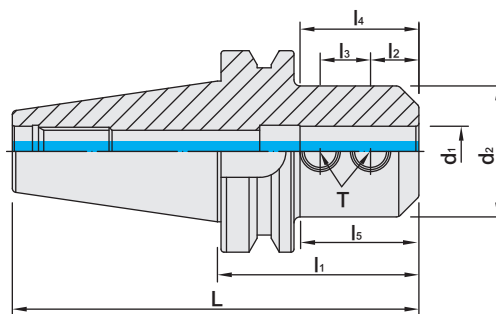
Pull Stud	Lock Screw	Torque Wrench Adapter (Pull Stud)	Spanner (Pull Stud)
P.W-67~68	P.W-109	P.W-78	P.W-82



# SBT / SLN SIDE LOCK END MILL HOLDER

Dual  
DRIVE+

SBT / SLN 法蘭加厚型側固式立銑刀桿



INCHES

MODEL NO.	TYPE	L	l <sub>1</sub>	l <sub>2</sub>	l <sub>3</sub>	l <sub>4</sub>	l <sub>5</sub>	d <sub>1</sub>	d <sub>2</sub>	T	WEIGHT (KGS)
5026-653-A08-250	SBT40 x SLN1/8" - 2.5"	5.075	2.5	0.37	-	0.787	1.24	0.125	0.69	#6-32	1.01
5026-653-A08-400	SBT40 x SLN1/8" - 4"	6.575	4	0.37	-	0.787	2.543	0.125	0.69	#6-32	1.06
5026-653-A12-250	SBT40 x SLN3/16" - 2.5"	5.075	2.5	0.562	-	0.984	1.24	0.1875	0.69	#8-32	1.01
5026-653-A12-400	SBT40 x SLN3/16" - 4"	6.575	4	0.562	-	0.984	2.543	0.1875	0.69	#8-32	1.02
5026-653-A16-250	SBT40 x SLN1/4" - 2.5"	5.075	2.5	0.63	-	1.378	1.122	0.25	0.78	1/4"-28	1.10
5026-653-A16-400	SBT40 x SLN1/4" - 4"	6.575	4	0.63	-	1.378	2.622	0.25	0.78	1/4"-28	1.04
5026-653-A20-250	SBT40 x SLN5/16" - 2.5"	5.075	2.5	0.6	-	1.378	1.043	0.3125	0.88	5/16"-24	1.12
5026-653-A24-250	SBT40 x SLN3/8" - 2.5"	5.075	2.5	0.75	-	1.535	1.24	0.375	1.25	3/8"-24	1.15
5026-653-A24-400	SBT40 x SLN3/8" - 4"	6.575	4	0.75	-	1.535	2.74	0.375	1	3/8"-24	1.07
5026-653-A28-250	SBT40 x SLN7/16" - 2.5"	5.075	2.5	0.812	-	1.535	1.24	0.4375	1.13	7/16"-20	1.10
5026-653-A32-250	SBT40 x SLN1/2" - 2.5"	5.075	2.5	0.875	-	1.732	1.319	0.5	1.25	7/16"-20	1.30
5026-653-A32-400	SBT40 x SLN1/2" - 4"	6.575	4	0.875	-	1.732	2.74	0.5	1.25	7/16"-20	1.18
5026-653-A40-250	SBT40 x SLN5/8" - 2.5"	5.075	2.5	0.937	-	1.85	1.319	0.625	1.5	1/2"-20	1.45
5026-653-A40-400	SBT40 x SLN5/8" - 4"	6.575	4	0.937	-	1.85	2.74	0.625	1.5	1/2"-20	1.23
5026-653-A48-250	SBT40 x SLN3/4" - 2.5"	5.075	2.5	1	-	1.929	1.319	0.75	1.75	5/8"-18	1.37
5026-653-A48-300	SBT40 x SLN3/4" - 3"	5.575	3	1	-	1.929	1.819	0.75	1.75	5/8"-18	1.65
5026-653-A48-400	SBT40 x SLN3/4" - 4"	6.575	4	1	-	1.929	2.819	0.75	1.75	5/8"-18	1.95
5026-653-A56-500	SBT40 x SLN7/8" - 5"	7.575	5	1.06	0.875	2.362	3.74	0.875	1.88	5/8"-18	1.59
5026-653-A64-356	SBT40 x SLN1" - 3.563"	6.137	3.563	1.046	1	2.559	2.421	1	2	3/4"-16	1.77
5026-653-A64-500	SBT40 x SLN1" - 5"	7.575	5	1.046	1	2.559	3.858	1	2	3/4"-16	1.93
5026-653-A72-356	SBT40 x SLN1-1/4" - 3.563"	6.137	3.563	1.125	1	2.559	2.539	1.25	2.5	3/4"-16	1.74
5026-653-A80-356	SBT40 x SLN1-1/2" - 3.563"	6.137	3.563	1.125	1	2.559	2.539	1.5	2.5	3/4"-16	3.62

**Features:**

- ▶ Internal hole tolerance: H5 (DIN-1835-B standard).
- ▶ The tolerance requirement of tool shank diameter is h6.
- ▶ Taking use of side lock screws to clamp tools with lateral flat surfaces. Good at heavy-duty machining.

**Product information:**

- ▶ The pre-balance reaches G6.3 8,000 rpm. Higher balancing grade and revolution can be done upon request but additional charge is needed.
- ▶ AD+B type is available, please inform us when making an order.

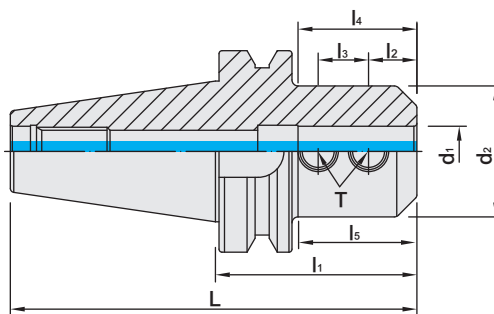
**Standard Accessory: • LOCK SCREW**

Pull Stud	Lock Screw	Torque Wrench Adapter (Pull Stud)	Spanner (Pull Stud)
P.W-67~68	P.W-109	P.W-78	P.W-82

# SBT / SLN SIDE LOCK END MILL HOLDER

Dual  
DRIVE+

SBT / SLN 法蘭加厚型側固式立銑刀桿



INCHES

MODEL NO.	TYPE	L	l <sub>1</sub>	l <sub>2</sub>	l <sub>3</sub>	l <sub>4</sub>	l <sub>5</sub>	d <sub>1</sub>	d <sub>2</sub>	T	WEIGHT (KGS)
5027-653-A16-300	SBT50 x SLN1/4" - 3"	7	3	0.63	-	1.378	1.11	0.25	0.78	1/4"-28	3.62
5027-653-A24-275	SBT50 x SLN3/8" - 2.75"	6.758	2.75	0.75	-	1.535	1.057	0.375	1	3/8"-24	3.61
5027-653-A32-300	SBT50 x SLN1/2" - 3"	7	3	0.875	-	1.732	1.386	0.5	1.25	7/16"-20	3.68
5027-653-A40-300	SBT50 x SLN5/8" - 3"	7	3	0.94	-	1.85	1.386	0.625	1.5	1/2"-20	3.77
5027-653-A48-300	SBT50 x SLN3/4" - 3"	7	3	1	-	1.929	1.386	0.75	1.75	5/8"-18	3.84
5027-653-A64-450	SBT50 x SLN1" - 4.5"	8.508	4.5	1.12	1	2.559	2.886	1	2	3/4"-16	4.27
5027-653-A64-600	SBT50 x SLN1" - 6"	10	6	1.125	1	2.559	4.11	1	2	3/4"-16	4.78
5027-653-A72-450	SBT50 x SLN1-1/4" - 4.5"	8.508	4.5	1.12	1	2.559	2.886	1.25	2.5	3/4"-16	4.65
5027-653-A80-400	SBT50 x SLN1-1/2" - 4"	8	4	1.12	1	2.559	2.504	1.5	2.5	3/4"-16	4.17

**Features:**

- ▶ Internal hole tolerance: H5 (DIN-1835-B standard).
- ▶ The tolerance requirement of tool shank diameter is h6.
- ▶ Taking use of side lock screws to clamp tools with lateral flat surfaces. Good at heavy-duty machining.

**Product information:**

- ▶ The pre-balance reaches G6.3 8,000 rpm. Higher balancing grade and revolution can be done upon request but additional charge is needed.
- ▶ AD+B type is available, please inform us when making an order.

**Standard Accessory: • LOCK SCREW**

Pull Stud	Lock Screw	Torque Wrench Adapter (Pull Stud)	Spanner (Pull Stud)
P.W-67~68	P.W-109	P.W-78	P.W-82

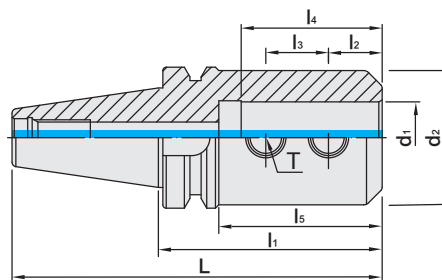


# SBT / SLN SIDE LOCK END MILL HOLDER

JIS TYPE

Dual  
DRIVE+

SBT / SLN 法蘭加厚型側固式立銑刀桿 [ JIS 型 ]



MODEL NO.	TYPE	L	l <sub>1</sub>	l <sub>2</sub>	l <sub>3</sub>	l <sub>4</sub>	l <sub>5</sub>	d <sub>1</sub>	d <sub>2</sub>	T	WEIGHT (KGS)
5026-654-006-075	SBT40 x SLN6 - 75JIS	140.4	75	12	10	35	45	6	25	M6 x 1.0P	1.20
5026-654-008-075	SBT40 x SLN8 - 75JIS	140.4	75	14	12	35	45	8	28	M8 x 1.25P	1.20
5026-654-010-075	SBT40 x SLN10 - 75JIS	140.4	75	15	14	39	45	10	35	M10 x 1.5P	1.40
5026-654-012-075	SBT40 x SLN12 - 75JIS	140.4	75	20	16	44	45	12	42	M10 x 1.5P	1.50
5026-654-016-075	SBT40 x SLN16 - 75JIS	140.4	75	22	18	47	45	16	48	M10 x 1.5P	1.60
5026-654-020-090	SBT40 x SLN20 - 90JIS	155.4	90	25	20	55	60	20	50	M12 x 1.75P	1.75
5026-654-025-090	SBT40 x SLN25 - 90JIS	155.4	90	24	25	58	60	25	50	M12 x 1.75P	1.70
5026-654-032-100	SBT40 x SLN32 - 100JIS	165.4	100	24	28	63	73	32	60	M16 x 2.0P	2.10
5027-654-006-075	SBT50 x SLN6 - 75JIS	176.8	75	12	10	35	27	6	25	M6 x 1.0P	3.90
5027-654-008-075	SBT50 x SLN8 - 75JIS	176.8	75	14	12	35	27	8	28	M8 x 1.25P	3.90
5027-654-010-075	SBT50 x SLN10 - 75JIS	176.8	75	15	14	39	32	10	35	M10 x 1.5P	3.90
5027-654-012-090	SBT50 x SLN12 - 90JIS	191.8	90	20	16	44	42	12	42	M10 x 1.5P	3.90
5027-654-016-090	SBT50 x SLN16 - 90JIS	191.8	90	22	18	47	42	16	48	M10 x 1.5P	3.90
5027-654-020-090	SBT50 x SLN20 - 90JIS	191.8	90	25	20	55	49	20	50	M12 x 1.75P	4.50
5027-654-025-100	SBT50 x SLN25 - 100JIS	201.8	100	24	25	58	59	25	50	M12 x 1.75P	4.58
5027-654-032-105	SBT50 x SLN32 - 105JIS	206.8	105	24	28	63	64	32	60	M16 x 2.0P	4.89

**Features:**

- ▶ Internal hole tolerance: H5.
- ▶ The tolerance requirement of tool shank diameter is h6.
- ▶ Taking use of side lock screws to clamp tools with lateral flat surfaces. Good at heavy-duty machining.

**Product information:**

- ▶ The pre-balance reaches G6.3 8,000 rpm. Higher balancing grade and revolution can be done upon request but additional charge is needed.
- ▶ AD+B type is available, please inform us when making an order.

**Standard Accessory: • LOCK SCREW**

Pull Stud	Lock Screw	Torque Wrench Adapter (Pull Stud)	Spanner (Pull Stud)
			
P.W-67~68	P.W-109	P.W-78	P.W-82

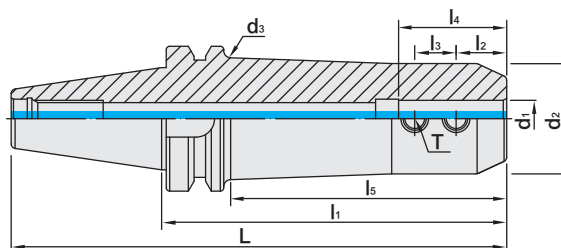
# SBT / SLN SIDE LOCK END MILL HOLDER

JIS TYPE

SBT

Dual  
DRIVE+

SBT / SLN 法蘭加厚型側固式立銑刀桿 [ JIS 型 ]



MODEL NO.	TYPE	L	l <sub>1</sub>	l <sub>2</sub>	l <sub>3</sub>	l <sub>4</sub>	l <sub>5</sub>	d <sub>1</sub>	d <sub>2</sub>	d <sub>3</sub>	T	WEIGHT (KGS)
5026-654-006-150	SBT40 x SLN6 - 150JIS	215.4	150	12	10	35	113	6	25	30	M6 x 1.0P	1.50
5026-654-008-150	SBT40 x SLN8 - 150JIS	215.4	150	14	12	35	113	8	28	33	M8 x 1.25P	1.50
5026-654-010-150	SBT40 x SLN10 - 150JIS	215.4	150	15	14	39	118	10	35	40	M10 x 1.5P	1.50
5026-654-012-150	SBT40 x SLN12 - 150JIS	215.4	150	20	16	44	118	12	42	47	M10 x 1.5P	1.70
5026-654-016-150	SBT40 x SLN16 - 150JIS	215.4	150	22	18	47	120	16	48	53	M10 x 1.5P	1.70
5026-654-020-150	SBT40 x SLN20 - 150JIS	215.4	150	25	20	55	120	20	52	57	M12 x 1.75P	1.80
5027-654-012-165	SBT50 x SLN12 - 165JIS	266.8	165	20	16	44	124	12	42	47	M10 x 1.5P	5.00
5027-654-016-165	SBT50 x SLN16 - 165JIS	266.8	165	22	18	47	117	16	48	53	M10 x 1.5P	5.00
5027-654-020-165	SBT50 x SLN20 - 165JIS	266.8	165	25	20	55	117	20	50	57	M12 x 1.75P	6.00
5027-654-020-210	SBT50 x SLN20 - 210JIS	311.8	210	25	20	55	162	20	50	57	M12 x 1.75P	7.00
5027-654-025-165	SBT50 x SLN25 - 165JIS	266.8	165	24	25	58	117	25	50	57	M12 x 1.75P	5.50
5027-654-025-210	SBT50 x SLN25 - 210JIS	311.8	210	24	25	58	162	25	50	57	M12 x 1.75P	6.00
5027-654-025-250	SBT50 x SLN25 - 250JIS	351.8	250	24	25	58	202	25	50	57	M12 x 1.75P	7.00
5027-654-032-165	SBT50 x SLN32 - 165JIS	266.8	165	24	28	63	117	32	60	65	M16 x 2.0P	6.22
5027-654-032-210	SBT50 x SLN32 - 210JIS	311.8	210	24	28	63	162	32	60	65	M16 x 2.0P	6.34
5027-654-032-250	SBT50 x SLN32 - 250JIS	351.8	250	24	28	63	202	32	60	65	M16 x 2.0P	7.50
5027-654-032-300	SBT50 x SLN32 - 300JIS	401.8	300	24	28	63	252	32	60	65	M16 x 2.0P	8.00

## Features:

- ▶ Internal hole tolerance: H5.
- ▶ The tolerance requirement of tool shank diameter is h6.
- ▶ Taking use of side lock screws to clamp tools with lateral flat surfaces. Good at heavy-duty machining.

## Product information:

- ▶ The pre-balance reaches G6.3 8,000 rpm. Higher balancing grade and revolution can be done upon request but additional charge is needed.
- ▶ AD+B type is available, please inform us when making an order.

## Standard Accessory: • LOCK SCREW

Pull Stud	Lock Screw	Torque Wrench Adapter (Pull Stud)	Spanner (Pull Stud)
P.W-67~68	P.W-109	P.W-78	P.W-82



# SBT FACE MILL ARBOR

## FMA TYPE

Dual  
DRIVE+

SBT / FMA 法蘭加厚型平面銑刀桿



Fig.1

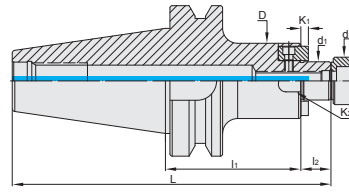
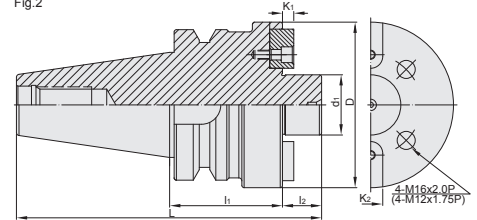
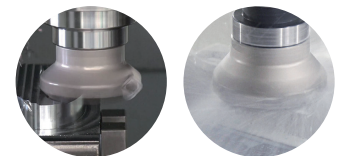


Fig.2



## INCHES

MODEL NO.	TYPE	L	l <sub>1</sub>	l <sub>2</sub>	D	d <sub>1</sub>	d <sub>2</sub>	K <sub>1</sub>	K <sub>2</sub>	Fig	WEIGHT (KGS)
5025-151-A64-177	SBT30 x FMA25.4 - 45	113.4	45	20	50	25.4	31.5	5	9.52	1	1.10
5025-151-A64-236	SBT30 x FMA25.4 - 60	128.4	60	20	50	25.4	31.5	5	9.52	1	1.30
5025-151-A72-177	SBT30 x FMA31.75 - 45	115.4	45	22	60	31.75	41	6	12.7	1	1.16
5026-151-A64-177	SBT40 x FMA25.4 - 45	130.4	45	20	50	25.4	31.5	5	9.52	1	1.80
5026-151-A64-236	SBT40 x FMA25.4 - 60	145.4	60	20	50	25.4	31.5	5	9.52	1	1.45
5026-151-A64-354	SBT40 x FMA25.4 - 90	175.4	90	20	50	25.4	31.5	5	9.52	1	2.10
5026-151-A64-413	SBT40 x FMA25.4 - 105	190.4	105	20	50	25.4	31.5	5	9.52	1	2.70
5026-151-A64-591	SBT40 x FMA25.4 - 150	235.4	150	20	50	25.4	31.5	5	9.52	1	3.00
5026-151-A72-177	SBT40 x FMA31.75 - 45	132.4	45	22	60	31.75	41	6	12.7	1	1.70
5026-151-A72-295	SBT40 x FMA31.75 - 75	162.4	75	22	60	31.75	41	6	12.7	1	2.70
5026-151-A72-354	SBT40 x FMA31.75 - 90	177.4	90	22	60	31.75	41	6	12.7	1	2.65
5026-151-A80-236	SBT40 x FMA38.1 - 60	150.4	60	25	75	38.1	44.5	8	15.87	1	2.25
5026-151-A80-591	SBT40 x FMA38.1 - 150	240.4	150	25	75	38.1	44.5	8	15.87	1	2.85
5026-151-A96-236	SBT40 x FMA50.8 - 60	161.4	60	36	98	50.8	65	10	19.05	1	2.25
5027-151-A64-177	SBT50 x FMA25.4 - 45	166.8	45	20	50	25.4	31.5	4.52	9.52	1	4.40
5027-151-A64-354	SBT50 x FMA25.4 - 90	211.8	90	20	50	25.4	31.5	5	9.52	1	5.10
5027-151-A64-591	SBT50 x FMA25.4 - 150	271.8	150	20	50	25.4	31.5	5	9.52	1	6.10
5027-151-A72-177	SBT50 x FMA31.75 - 45	168.8	45	22	60	31.75	41	6.2	12.7	1	4.50
5027-151-A72-295	SBT50 x FMA31.75 - 75	198.8	75	22	60	31.75	41	6	12.7	1	5.70
5027-151-A72-413	SBT50 x FMA31.75 - 105	228.8	105	22	60	31.75	41	6	12.7	1	5.70
5027-151-A80-177	SBT50 x FMA38.1 - 45	171.8	45	25	80	38.1	44.5	8.87	15.87	1	5.20
5027-151-A80-295	SBT50 x FMA38.1 - 75	201.8	75	25	80	38.1	44.5	8	15.87	1	6.00
5027-151-A96-177	SBT50 x FMA50.8 - 45	182.8	45	36	98	50.8	65	9.75	19.05	1	5.70
5027-151-A96-295	SBT50 x FMA50.8 - 75	212.8	75	36	98	50.8	65	10	19.05	1	6.80
5027-151-A92-295	SBT50 x FMA47.62 - 75	208.8	75	32	128.75	47.62	-	12.4	25.4	2	7.90



## Features:

- ▶ Tolerance of d1 the connection part with cutter: h6, which is good for less chatter and longer cutter life.
- ▶ Standard screw attached is w/o coolant hole.
- ▶ To use with face mill cutters with coolant holes, the standard screw has to be changed into the screw with coolant flute, which is available to order separately.

## Product information:

- ▶ AD+B type is available, please inform us when making an order.
- ▶ SBT30 tool holders are without coolant supply over collars.

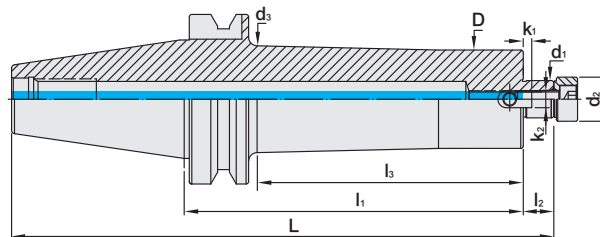
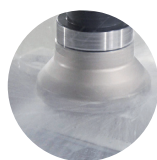
Pull Stud	Screw	Torque Wrench Adapter (Pull Stud)	Spanner (Pull Stud)
P.W-67~68	P.W-109	P.W-78	P.W-82

# SBT FACE MILL ARBOR

## EXTENSION TYPE

Dual  
DRIVE+

SBT / FMA 法蘭加厚型平面銑刀桿 [ 加長斜度桿 ]



INCHES

MODEL NO.	TYPE	L	l <sub>1</sub>	l <sub>2</sub>	l <sub>3</sub>	D	d <sub>1</sub>	d <sub>2</sub>	d <sub>3</sub>	K <sub>1</sub>	K <sub>2</sub>	WEIGHT (KGS)
5027-152-A64-492	SBT50 x FMA25.4 - 125BG	246.8	125	20	79	48	25.4	31.5	60	5	9.52	5.30
5027-152-A64-591	SBT50 x FMA25.4 - 150BG	271.8	150	20	102	48	25.4	31.5	60	5	9.52	6.40
5027-152-A64-787	SBT50 x FMA25.4 - 200BG	321.8	200	20	152	58	25.4	31.5	63	5	9.52	7.50
5027-152-A64-984	SBT50 x FMA25.4 - 250BG	371.8	250	20	202	58	25.4	31.5	63	5	9.52	8.60
5027-152-A64-1181	SBT50 x FMA25.4 - 300BG	421.8	300	20	252	58	25.4	31.5	63	5	9.52	9.70
5027-152-A64-1378	SBT50 x FMA25.4 - 350BG	471.8	350	20	302	58	25.4	31.5	66	5	9.52	10.8
5027-152-A64-1575	SBT50 x FMA25.4 - 400BG	521.8	400	20	352	58	25.4	31.5	66	5	9.52	11.9
5027-152-A72-492	SBT50 x FMA31.75 - 125BG	248.8	125	22	82	70	31.75	41	75	6	12.7	5.60
5027-152-A72-591	SBT50 x FMA31.75 - 150BG	273.8	150	22	107	70	31.75	41	75	6	12.7	6.30
5027-152-A72-689	SBT50 x FMA31.75 - 175BG	298.8	175	22	132	70	31.75	41	75	6	12.7	8.30
5027-152-A72-787	SBT50 x FMA31.75 - 200BG	323.8	200	22	157	70	31.75	41	75	6	12.7	9.10
5027-152-A72-984	SBT50 x FMA31.75 - 250BG	373.8	250	22	207	70	31.75	41	75	6	12.7	10.6
5027-152-A72-1181	SBT50 x FMA31.75 - 300BG	423.8	300	22	252	70	31.75	41	75	6	12.7	12.1
5027-152-A72-1378	SBT50 x FMA31.75 - 350BG	473.8	350	22	302	70	31.75	41	75	6	12.7	13.6

### Features:

- ▶ Metric size
- ▶ BG extension type: special design of enlarged neck for arbor prolonged length to improve the rigidity and achieve anti-vibration.
- ▶ Tolerance of d<sub>1</sub> the connection part with cutter: h6, which is good for less chatter and longer cutter life.
- ▶ Standard screw attached is w/o coolant hole.
- ▶ To use with face mill cutters with coolant holes, the standard screw has to be changed into the screw with coolant flute, which is available to order separately.

### Product information:

- ▶ AD+B type is available, please inform us when making an order.

Pull Stud	Screw	Torque Wrench Adapter (Pull Stud)	Spanner (Pull Stud)
P.W-67~68	P.W-109	P.W-78	P.W-82

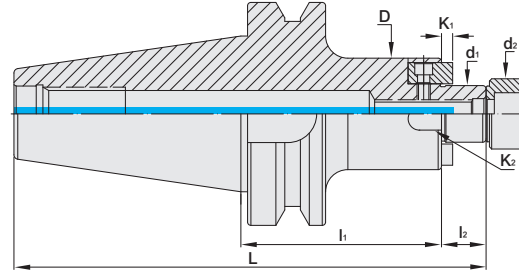
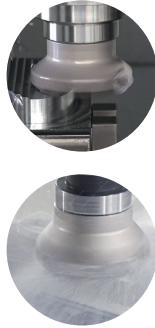


# SBT FACE MILL ARBOR

## FMB TYPE

Dual  
DRIVE+

SBT / FMB 法蘭加厚型平面銑刀桿



MODEL NO.	TYPE	L	l <sub>1</sub>	l <sub>2</sub>	D	d <sub>1</sub>	d <sub>2</sub>	K <sub>1</sub>	K <sub>2</sub>	WEIGHT (KGS)
5025-153-016-045	SBT30 x FMB16 - 45	109.4	45	16	34	16	13	5	8	0.57
5025-153-022-045	SBT30 x FMB22 - 45	112.4	45	19	48	22	26	5	10	0.85
5025-153-022-060	SBT30 x FMB22 - 60	127.4	60	19	48	22	26	5	10	1.02
5025-153-027-045	SBT30 x FMB27 - 45	113.4	45	20	60	27	31.5	5	12	1.06
5025-153-027-060	SBT30 x FMB27 - 60	128.4	60	20	60	27	31.5	5	12	1.35
5025-153-032-045	SBT30 x FMB32 - 45	115.4	45	22	78	32	41	7	14	1.35
5026-153-016-050	SBT40 x FMB16 - 50	131.4	50	16	34	16	13	5	8	1.15
5026-153-016-065	SBT40 x FMB16 - 65	146.4	65	16	34	16	13	5	8	1.24
5026-153-016-120	SBT40 x FMB16 - 120	201.4	120	16	34	16	13	5	8	1.57
5026-153-022-045	SBT40 x FMB22 - 45	129.4	45	19	48	22	26	5	10	1.45
5026-153-022-060	SBT40 x FMB22 - 60	144.4	60	19	48	22	26	5	10	1.54
5026-153-022-100	SBT40 x FMB22 - 100	184.4	100	19	48	22	26	5	10	2.10
5026-153-027-045	SBT40 x FMB27 - 45	130.4	45	20	60	27	31.5	5	12	1.60
5026-153-027-060	SBT40 x FMB27 - 60	145.4	60	20	60	27	31.5	5	12	2.00
5026-153-027-090	SBT40 x FMB27 - 90	175.4	90	20	60	27	31.5	5	12	2.30
5026-153-027-105	SBT40 x FMB27 - 105	190.4	105	20	60	27	31.5	5	12	2.10
5026-153-032-060	SBT40 x FMB32 - 60	147.4	60	22	78	32	41	7	14	2.35
5026-153-040-060	SBT40 x FMB40 - 60	150.4	60	25	80	40	48	8	16	2.80
5026-153-040-075	SBT40 x FMB40 - 75	165.4	75	25	80	40	48	8	16	2.97
5026-153-040-105	SBT40 x FMB40 - 105	195.4	105	25	80	40	48	8	16	3.27

**Features:**

- ▶ Tolerance of d1 the connection part with cutter: h6, which is good for less chatter and longer cutter life.
- ▶ Standard screw attached is w/o coolant hole.
- ▶ To use with face mill cutters with coolant holes, the standard screw has to be changed into the screw with coolant flute, which is available to order separately.

**Product information:**

- ▶ AD+B type is available, please inform us when making an order.
- ▶ SBT30 tool holders are without coolant supply over collars.

Pull Stud	Screw	Torque Wrench Adapter (Pull Stud)	Spanner (Pull Stud)
P.W-67~68	P.W-109	P.W-78	P.W-82

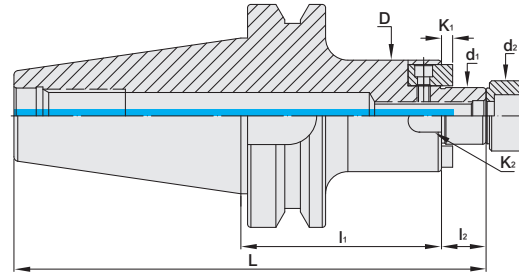
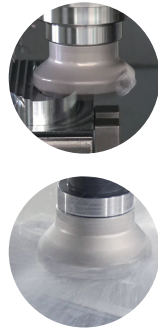


# SBT FACE MILL ARBOR

## FMB TYPE

Dual  
DRIVE+

SBT / FMB 法蘭加厚型平面銑刀桿



MODEL NO.	TYPE	L	l <sub>1</sub>	l <sub>2</sub>	D	d <sub>1</sub>	d <sub>2</sub>	K <sub>1</sub>	K <sub>2</sub>	WEIGHT (KGS)
5027-153-022-045	SBT50 x FMB22 - 45	165.8	45	19	48	22	26	4.8	10	4.75
5027-153-022-090	SBT50 x FMB22 - 90	210.8	90	19	48	22	26	5	10	5.10
5027-153-022-150	SBT50 x FMB22 - 150	270.8	150	19	48	22	26	5	10	6.80
5027-153-027-050	SBT50 x FMB27 - 50	171.8	50	20	60	27	31.5	5.8	12	4.30
5027-153-027-090	SBT50 x FMB27 - 90	211.8	90	20	60	27	31.5	5	12	5.40
5027-153-027-150	SBT50 x FMB27 - 150	271.8	150	20	60	27	31.5	5	12	6.50
5027-153-027-200	SBT50 x FMB27 - 200	321.8	200	20	60	27	31.5	5	12	7.50
5027-153-027-250	SBT50 x FMB27 - 250	371.8	250	20	60	27	31.5	5	12	8.50
5027-153-032-050	SBT50 x FMB32 - 50	173.8	50	22	78	32	41	6.8	14	4.60
5027-153-032-090	SBT50 x FMB32 - 90	213.8	90	22	78	32	41	7	14	5.80
5027-153-040-050	SBT50 x FMB40 - 50	176.8	50	25	89	40	48	7.9	16	5.20
5027-153-040-090	SBT50 x FMB40 - 90	216.8	90	25	89	40	48	8	16	6.00
5027-153-040-105	SBT50 x FMB40 - 105	231.8	105	25	89	40	48	8	16	7.20
5027-153-040-150	SBT50 x FMB40 - 150	276.8	150	25	89	40	48	8	16	7.90

**Features:**

- ▶ Tolerance of d1 the connection part with cutter: h6, which is good for less chatter and longer cutter life.
- ▶ Standard screw attached is w/o coolant hole.
- ▶ To use with face mill cutters with coolant holes, the standard screw has to be changed into the screw with coolant flute, which is available to order separately.

**Product information:**

- ▶ AD+B type is available, please inform us when making an order.

Pull Stud	Screw	Torque Wrench Adapter (Pull Stud)	Spanner (Pull Stud)
P.W-67~68	P.W-109	P.W-78	P.W-82

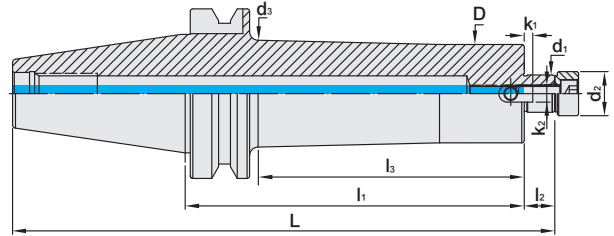
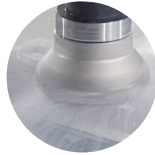
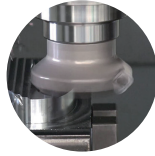


# SBT FACE MILL ARBOR

## EXTENSION TYPE

Dual  
DRIVE+

SBT / FMB 法蘭加厚型平面銑刀桿 [ 加長斜度桿 ]



MODEL NO.	TYPE	L	l <sub>1</sub>	l <sub>2</sub>	l <sub>3</sub>	D	d <sub>1</sub>	d <sub>2</sub>	d <sub>3</sub>	K <sub>1</sub>	K <sub>2</sub>	WEIGHT (KGS)
5026-154-022-150	SBT40 x FMB22 - 150BG	234.4	150	19	118	48	22	26	51	5	10	3.10
5026-154-022-200	SBT40 x FMB22 - 200BG	284.4	200	19	168	48	22	26	51	5	10	4.00
5026-154-022-250	SBT40 x FMB22 - 250BG	334.4	250	19	218	48	22	26	51	5	10	4.90
5027-154-022-150	SBT50 x FMB22 - 150BG	270.8	150	19	107	58	22	26	62.5	5	10	6.80
5027-154-022-200	SBT50 x FMB22 - 200BG	320.8	200	19	157	58	22	26	62.5	5	10	8.40
5027-154-022-250	SBT50 x FMB22 - 250BG	370.8	250	19	207	58	22	26	62.5	5	10	9.40
5027-154-022-300	SBT50 x FMB22 - 300BG	420.8	300	19	257	58	22	26	62.5	5	10	10.4
5027-154-022-350	SBT50 x FMB22 - 350BG	470.8	350	19	307	58	22	26	62.5	5	10	11.4
5027-154-022-400	SBT50 x FMB22 - 400BG	520.8	400	19	352	58	22	26	62.5	5	10	12.4
5027-154-022-450	SBT50 x FMB22 - 450BG	570.8	450	19	402	58	22	26	62.5	5	10	13.4
5027-154-022-500	SBT50 x FMB22 - 500BG	620.8	500	19	452	58	22	26	62.5	5	10	14.4
5027-154-027-150	SBT50 x FMB27 - 150BG	271.8	150	20	107	70	27	31.5	78	5	12	6.80
5027-154-027-200	SBT50 x FMB27 - 200BG	321.8	200	20	154	70	27	31.5	78	5	12	8.40
5027-154-027-250	SBT50 x FMB27 - 250BG	371.8	250	20	204	70	27	31.5	78	5	12	9.40
5027-154-027-300	SBT50 x FMB27 - 300BG	421.8	300	20	254	70	27	31.5	78	5	12	10.4
5027-154-027-350	SBT50 x FMB27 - 350BG	471.8	350	20	307	70	27	31.5	78	5	12	11.4
5027-154-027-400	SBT50 x FMB27 - 400BG	521.8	400	20	352	70	27	31.5	78	5	12	12.4
5027-154-027-450	SBT50 x FMB27 - 450BG	571.8	450	20	402	70	27	31.5	78	5	12	13.4
5027-154-027-500	SBT50 x FMB27 - 500BG	621.8	500	20	452	70	27	31.5	78	5	12	14.4
5027-154-032-150	SBT50 x FMB32 - 150BG	273.8	150	22	107	78	32	41	85	7	14	7.00
5027-154-032-200	SBT50 x FMB32 - 200BG	323.8	200	22	157	78	32	41	85	7	14	8.50
5027-154-032-250	SBT50 x FMB32 - 250BG	373.8	250	22	207	78	32	41	85	7	14	9.50
5027-154-032-300	SBT50 x FMB32 - 300BG	423.8	300	22	257	78	32	41	85	7	14	10.5
5027-154-032-350	SBT50 x FMB32 - 350BG	473.8	350	22	307	78	32	41	85	7	14	11.5
5027-154-032-400	SBT50 x FMB32 - 400BG	523.8	400	22	357	78	32	41	85	7	14	12.5
5027-154-032-450	SBT50 x FMB32 - 450BG	573.8	450	22	407	78	32	41	85	7	14	13.5
5027-154-032-500	SBT50 x FMB32 - 500BG	623.8	500	22	460	80	32	41	85	7	14	14.5

**Features:**

- ▶ BG extension type: special design of enlarged neck for arbor prolonged length to improve the rigidity and achieve anti-vibration.
- ▶ Tolerance of d<sub>1</sub> the connection part with cutter: h6, which is good for less chatter and longer cutter life.
- ▶ Standard screw attached is w/o coolant hole.
- ▶ To use with face mill cutters with coolant holes, the standard screw has to be changed into the screw with coolant flute, which is available to order separately.

**Product information:**

- ▶ AD+B type is available, please inform us when making an order.

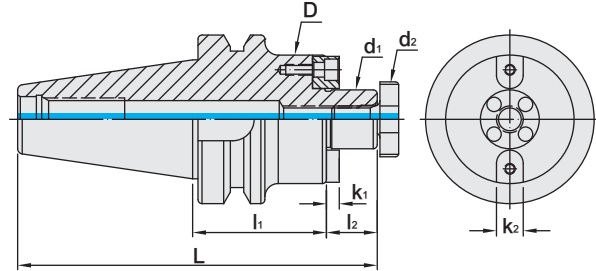
Pull Stud	Screw	Torque Wrench Adapter (Pull Stud)	Spanner (Pull Stud)
P.W-67~68	P.W-109	P.W-78	P.W-82

# SBT FACE MILL ARBOR

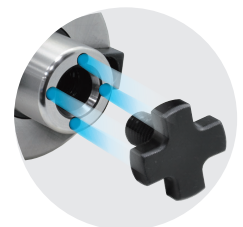
## FMC TYPE

Dual  
DRIVE+

SBT / FMC 法蘭加厚型平面銑刀桿



MODEL NO.	TYPE	L	l <sub>1</sub>	l <sub>2</sub>	D	d <sub>1</sub>	d <sub>2</sub>	K <sub>1</sub>	K <sub>2</sub>	WEIGHT (KGS)
5025-157-016-035	SBT30 x FMC16 - 35	100.4	35	17	40	16	20	5	8	0.72
5025-157-022-040	SBT30 x FMC22 - 40	107.4	40	19	45	22	28	4.8	10	0.80
5025-157-027-040	SBT30 x FMC27 - 40	109.4	40	21	60	27	35	5.8	12	1.06
5026-157-016-045	SBT40 x FMC16 - 45	127.4	45	17	38	16	20	5	8	1.20
5026-157-022-045	SBT40 x FMC22 - 45	129.4	45	19	50	22	28	4.8	10	1.34
5026-157-027-045	SBT40 x FMC27 - 45	131.4	45	21	60	27	35	5.8	12	1.56
5026-157-032-060	SBT40 x FMC32 - 60	149.4	60	24	78	32	42	6.8	14	1.96
5027-157-016-050	SBT50 x FMC16 - 50	168.8	50	17	40	16	20	5	8	4.00
5027-157-022-060	SBT50 x FMC22 - 60	180.8	60	19	50	22	28	4.8	10	4.10
5027-157-027-060	SBT50 x FMC27 - 60	182.8	60	21	60	27	35	5.8	12	4.30
5027-157-032-060	SBT50 x FMC32 - 60	185.8	60	24	78	32	42	6.8	14	4.60
5027-157-040-070	SBT50 x FMC40 - 70	198.8	70	27	89	40	52	7.9	16	5.20



**Features:**

- ▶ With four coolant holes on the face of tool holder to match with face mill cutters with coolant holes.
- ▶ Tolerance of d1 the connection part with cutter: h6, which is good for less chatter and longer cutter life.

**Product information:**

- ▶ AD+B type is available, please inform us when making an order.
- ▶ SBT30 tool holders are without coolant supply over collars.

**Standard Accessory: • NUT • SPANNER**

Nut	Pull Stud	Spanner	Torque Wrench Adapter (Pull Stud)	Spanner (Pull Stud)
P.W-74	P.W-67~68	P.W-74	P.W-78	P.W-82

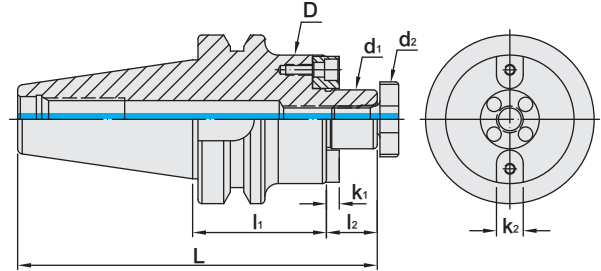


# SBT FACE MILL ARBOR

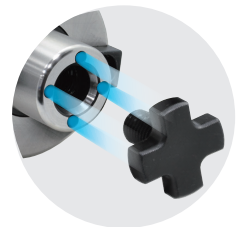
## FMC TYPE

Dual  
DRIVE+

SBT / FMC 法蘭加厚型平面銑刀桿



MODEL NO.	TYPE	L	l <sub>1</sub>	l <sub>2</sub>	D	d <sub>1</sub>	d <sub>2</sub>	K <sub>1</sub>	K <sub>2</sub>	WEIGHT (KGS)
5026-157-A56-177	SBT40 x FMC22.225 - 45	127.4	45	17	47	22.225	28	3.5	8	1.50
5026-157-A56-236	SBT40 x FMC22.225 - 60	142.4	60	17	47	22.225	28	3.5	8	1.80
5026-157-A56-354	SBT40 x FMC22.225 - 90	172.4	90	17	47	22.225	28	3.5	8	2.50
5026-157-A64-236	SBT40 x FMC25.4 - 60	147.4	60	22	70	25.4	35	5	9.525	2.00
5026-157-A64-354	SBT40 x FMC25.4 - 90	177.4	90	22	70	25.4	35	5	9.525	2.70
5026-157-A64-413	SBT40 x FMC25.4 - 105	192.4	105	22	70	25.4	35	5	9.525	3.40
5026-157-A72-236	SBT40 x FMC31.75 - 60	155.4	60	30	76	31.75	42	7	12.7	2.50
5026-157-A72-354	SBT40 x FMC31.75 - 90	185.4	90	30	76	31.75	42	7	12.7	3.20
5027-157-A56-354	SBT50 x FMC22.225 - 90	208.8	90	17	47	22.225	28	3.5	8	4.40
5027-157-A56-413	SBT50 x FMC22.225 - 105	223.8	105	17	47	22.225	28	3.5	8	4.70
5027-157-A56-591	SBT50 x FMC22.225 - 150	268.8	150	17	47	22.225	28	3.5	8	5.30
5027-157-A56-787	SBT50 x FMC22.225 - 200	318.8	200	17	47	22.225	28	3.5	8	6.00
5027-157-A56-984	SBT50 x FMC22.225 - 250	368.8	250	17	47	22.225	28	3.5	8	6.60
5027-157-A56-1181	SBT50 x FMC22.225 - 300	418.8	300	17	47	22.225	28	3.5	8	7.70
5027-157-A56-1378	SBT50 x FMC22.225 - 350	468.8	350	17	47	22.225	28	3.5	8	8.90
5027-157-A64-177	SBT50 x FMC25.4 - 45	168.8	45	22	70	25.4	35	5	9.525	4.00
5027-157-A64-236	SBT50 x FMC25.4 - 60	183.8	60	22	70	25.4	35	5	9.525	4.50
5027-157-A64-354	SBT50 x FMC25.4 - 90	213.8	90	22	70	25.4	35	5	9.525	5.40
5027-157-A64-591	SBT50 x FMC25.4 - 150	273.8	150	22	70	25.4	35	5	9.525	7.20
5027-157-A64-787	SBT50 x FMC25.4 - 200	323.8	200	22	70	25.4	35	5	9.525	8.70
5027-157-A64-984	SBT50 x FMC25.4 - 250	373.8	250	22	70	25.4	35	5	9.525	10.3
5027-157-A64-1181	SBT50 x FMC25.4 - 300	423.8	300	22	70	25.4	35	5	9.525	11.8

**Features:**

- ▶ With four coolant holes on the face of tool holder to match with face mill cutters with coolant holes.
- ▶ Tolerance of d<sub>1</sub> the connection part with cutter: h6, which is good for less chatter and longer cutter life.

**Product information:**

- ▶ AD+B type is available, please inform us when making an order.

**Standard Accessory: • NUT • SPANNER**

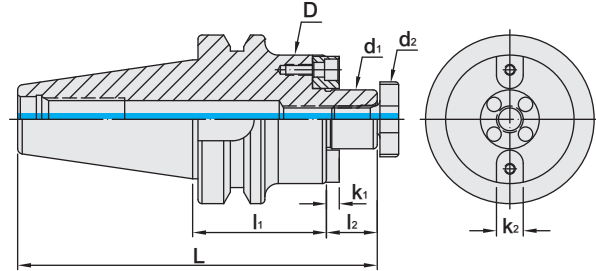
Nut	Pull Stud	Spanner	Torque Wrench Adapter (Pull Stud)	Spanner (Pull Stud)
				
P.W-74	P.W-67~68	P.W-74	P.W-78	P.W-82

# SBT FACE MILL ARBOR

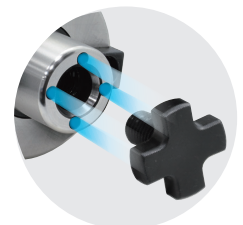
## FMC TYPE

Dual  
DRIVE+

SBT / FMC 法蘭加厚型平面銑刀桿



MODEL NO.	TYPE	L	l <sub>1</sub>	l <sub>2</sub>	D	d <sub>1</sub>	d <sub>2</sub>	K <sub>1</sub>	K <sub>2</sub>	WEIGHT (KGS)
5027-157-A72-177	SBT50 x FMC31.75 - 45	176.8	45	30	76	31.75	42	7	12.7	4.10
5027-157-A72-295	SBT50 x FMC31.75 - 75	206.8	75	30	76	31.75	42	7	12.7	5.20
5027-157-A72-413	SBT50 x FMC31.75 - 105	236.8	105	30	76	31.75	42	7	12.7	6.30
5027-157-A72-591	SBT50 x FMC31.75 - 150	281.8	150	30	76	31.75	42	7	12.7	7.90
5027-157-A72-787	SBT50 x FMC31.75 - 200	331.8	200	30	76	31.75	42	7	12.7	9.70
5027-157-A72-984	SBT50 x FMC31.75 - 250	381.8	250	30	76	31.75	42	7	12.7	11.6
5027-157-A72-1181	SBT50 x FMC31.75 - 300	431.8	300	30	76	31.75	42	7	12.7	13.4
5027-157-A80-177	SBT50 x FMC38.1 - 45	180.8	45	34	100	38.1	52	9	15.9	4.40
5027-157-A80-295	SBT50 x FMC38.1 - 75	210.8	75	34	100	38.1	52	9	15.9	6.30
5027-157-A80-413	SBT50 x FMC38.1 - 105	240.8	105	34	100	38.1	52	9	15.9	8.10
5027-157-A80-591	SBT50 x FMC38.1 - 150	285.8	150	34	100	38.1	52	9	15.9	10.9
5027-157-A80-787	SBT50 x FMC38.1 - 200	335.8	200	34	100	38.1	52	9	15.9	14.5
5027-157-A80-984	SBT50 x FMC38.1 - 250	385.8	250	34	100	38.1	52	9	15.9	17.5
5027-157-A80-1181	SBT50 x FMC38.1 - 300	435.8	300	34	100	38.1	52	9	15.9	19.2



### Features:

- ▶ With four coolant holes on the face of tool holder to match with face mill cutters with coolant holes.
- ▶ Tolerance of d<sub>1</sub> the connection part with cutter: h6, which is good for less chatter and longer cutter life.

### Product information:

- ▶ AD+B type is available, please inform us when making an order.

**Standard Accessory: • NUT • SPANNER**

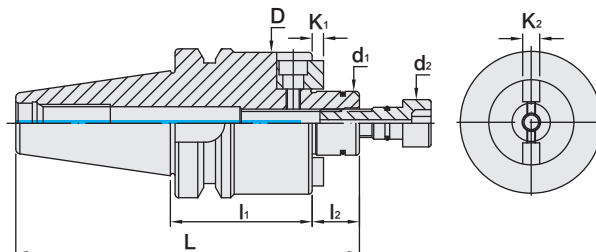
Nut	Pull Stud	Spanner	Torque Wrench Adapter (Pull Stud)	Spanner (Pull Stud)
				
P.W-74	P.W-67~68	P.W-74	P.W-78	P.W-82



# SBT / SMA FACE MILL ARBOR

Dual  
DRIVE+

SBT / SMA 法蘭加厚型平面銑刀桿



MODEL NO.	TYPE	L	l <sub>1</sub>	l <sub>2</sub>	D	d <sub>1</sub>	d <sub>2</sub>	K <sub>1</sub>	K <sub>2</sub>	WEIGHT (KGS)
5026-660-022-090	SBT40 x SMA22 - 90	174.4	90	19	48	22	18	4.8	10	1.90
5026-660-022-105	SBT40 x SMA22 - 105	189.4	105	19	48	22	18	4.8	10	1.10
5026-660-022-135	SBT40 x SMA22 - 135	219.4	135	19	48	22	18	4.8	10	2.20
5026-660-027-090	SBT40 x SMA27 - 90	175.4	90	20	60	27	20	5.8	12	2.00
5026-660-027-105	SBT40 x SMA27 - 105	190.4	105	20	60	27	20	5.8	12	2.10
5026-660-027-135	SBT40 x SMA27 - 135	220.4	135	20	60	27	20	5.8	12	2.20
5026-660-032-090	SBT40 x SMA32 - 90	177.4	90	22	80	32	22	6.8	14	2.40
5026-660-032-105	SBT40 x SMA32 - 105	192.4	105	22	80	32	22	6.8	14	2.50
5026-660-032-135	SBT40 x SMA32 - 135	222.4	135	22	80	32	22	6.8	14	2.60
5027-660-022-090	SBT50 x SMA22 - 90	210.8	90	19	48	22	18	4.8	10	4.80
5027-660-022-105	SBT50 x SMA22 - 105	225.8	105	19	48	22	18	4.8	10	5.00
5027-660-022-135	SBT50 x SMA22 - 135	255.8	135	19	48	22	18	4.8	10	5.10
5027-660-027-090	SBT50 x SMA27 - 90	211.8	90	20	60	27	20	5.8	12	5.40
5027-660-027-105	SBT50 x SMA27 - 105	226.8	105	20	60	27	20	5.8	12	5.50
5027-660-027-135	SBT50 x SMA27 - 135	256.8	135	20	60	27	20	5.8	12	5.60
5027-660-032-090	SBT50 x SMA32 - 90	213.8	90	22	80	32	22	6.8	14	5.80
5027-660-032-105	SBT50 x SMA32 - 105	228.8	105	22	80	32	22	6.8	14	5.90
5027-660-032-135	SBT50 x SMA32 - 135	258.8	135	22	80	32	22	6.8	14	6.00

**Features:**

- ▶ d1 tolerance: h6.
- ▶ Suitable for SRM Shell Rough Fixation Mill.
- ▶ There is more than 80% contact area that can avoid vibration effectively.

**Product information:**

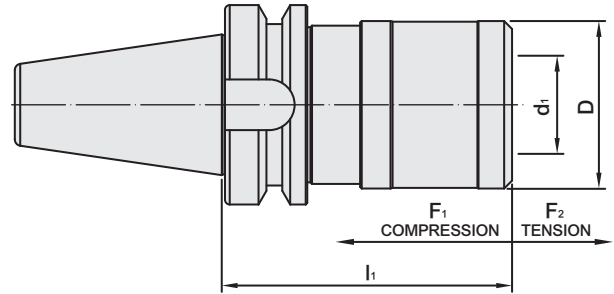
- ▶ AD+B type is available, please inform us when making an order.

Pull Stud	Torque Wrench Adapter (Pull Stud)	Spanner (Pull Stud)
		
P.W-67~68	P.W-78	P.W-82

# SBT / QTC QUICK CHANGE TAPPING CHUCK

With length compensation on tension and compression

SBT / QTC 法蘭加厚型快換式扭力攻牙刀桿 [伸縮緩衝型]



MODEL NO.	TYPE	TAPPING COLLET	TAPPING CAPACITY	COMPENSATION		l <sub>1</sub>	D	d <sub>1</sub>	WEIGHT (KGS)
				F <sub>1</sub>	F <sub>2</sub>				
5025-580-001-085	SBT30 x QTC1 - 85	TCS - 1B	M3 - M14	7.5	7.5	85	36	19	0.86
5025-580-002-115	SBT30 x QTC2 - 115	TCS - 2B	M8 - M24	12.5	12.5	115	53	31	1.46
5026-580-001-075	SBT40 x QTC1 - 75	TCS - 1B	M3 - M14	7.5	7.5	75	36	19	1.26
5026-580-002-100	SBT40 x QTC2 - 100	TCS - 2B	M8 - M24	12.5	12.5	100	53	31	1.74
5026-580-003-160	SBT40 x QTC3 - 160	TCS - 3B	M14 - M36	20	20	160	78	48	3.63
5027-580-001-090	SBT50 x QTC1 - 90	TCS - 1B	M3 - M14	7.5	7.5	90	36	19	4.00
5027-580-002-115	SBT50 x QTC2 - 115	TCS - 2B	M8 - M24	12.5	12.5	115	53	31	4.51
5027-580-003-150	SBT50 x QTC3 - 150	TCS - 3B	M14 - M36	20	20	150	78	48	5.78

### Features:

- ▶ Quick and easy tool change in seconds!
- ▶ Absorb any inaccuracies between the rotating spindle and the moving Z-axis, increasing tap life and the improving tapping quality.
- ▶ Most commonly used for old CNC machines without rigid tapping. The length compensation prevents oversized threads and helps prevent tap breakage from excessive torque or over travel when the tap hits the bottom of the hole.

### Synchronized Tapping Holder:

- ▶ Ideal for everyday tapping, high speed and high production tapping for modern CNC machines capable of rigid tapping.
- ▶ Also ideal for high-end tapping applications in modern CNC machines, such as: small taps or difficult materials resulting in high torque loads.

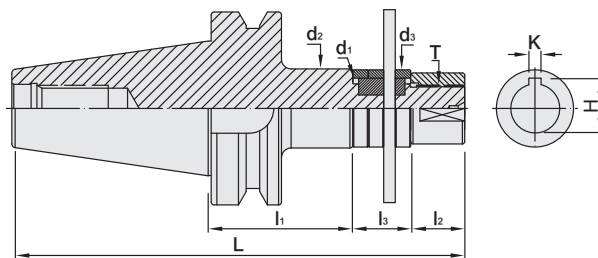
Tapping Collet	Pull Stud	Torque Wrench Adapter (Pull Stud)	Spanner (Pull Stud)
P.A-52~54	P.W-67~68	P.W-78	P.W-82



# SBT SIDE CUTTER ADAPTER

Dual  
DRIVE+

SBT / SCA 法蘭加厚型側銑刀桿



MODEL NO.	TYPE	L	l <sub>1</sub>	l <sub>2</sub>	l <sub>3</sub>	d <sub>1</sub>	d <sub>2</sub>	d <sub>3</sub>	K	H	T	WEIGHT (KGS)
5025-649-010-060	SBT30 x SCA10 - 60	155.4	60	12	35	10	18	18	-	-	M8 x 1.25P	0.80
5025-649-016-060	SBT30 x SCA16 - 60	154.4	60	16	30	16	26	26	4	17.7	M14 x 1.5P	1.00
5025-649-022-060	SBT30 x SCA22 - 60	160.4	60	22	30	22	34	34	6	24.3	M20 x 1.5P	1.20
5025-649-022-075	SBT30 x SCA22 - 75	175.4	75	22	30	22	34	34	6	24.3	M20 x 1.5P	1.40
5026-649-016-060	SBT40 x SCA16 - 60	171.4	60	16	30	16	26	26	4	17.7	M14 x 1.5P	1.50
5026-649-022-060	SBT40 x SCA22 - 60	177.4	60	22	30	22	34	34	6	24.3	M20 x 1.5P	1.60
5026-649-022-075	SBT40 x SCA22 - 75	192.4	75	22	30	22	34	34	6	24.3	M20 x 1.5P	1.70
5026-649-022-120	SBT40 x SCA22 - 120	237.4	120	22	30	22	34	34	6	24.3	M20 x 1.5P	2.00
5026-649-027-075	SBT40 x SCA27 - 75	198.4	75	28	30	27	41	40	7	30	M24 x 1.5P	2.10
5026-649-027-120	SBT40 x SCA27 - 120	243.4	120	28	30	27	41	40	7	30	M24 x 1.5P	2.50
5026-649-032-090	SBT40 x SCA32 - 90	217.4	90	32	30	32	47	46	8	35.5	M30 x 1.5P	2.60
5027-649-022-090	SBT50 x SCA22 - 90	243.8	90	22	30	22	34	34	6	24.3	M20 x 1.5P	4.40
5027-649-022-135	SBT50 x SCA22 - 135	288.8	135	22	30	22	34	34	6	24.3	M20 x 1.5P	4.70
5027-649-027-090	SBT50 x SCA27 - 90	249.8	90	28	30	27	41	40	7	30	M24 x 1.5P	4.60
5027-649-027-135	SBT50 x SCA27 - 135	294.8	135	28	30	27	41	40	7	30	M24 x 1.5P	5.00
5027-649-032-090	SBT50 x SCA32 - 90	253.8	90	32	30	32	47	46	8	35.5	M30 x 1.5P	4.70
5027-649-032-135	SBT50 x SCA32 - 135	298.8	135	32	30	32	47	46	8	35.5	M30 x 1.5P	5.20
5027-649-040-090	SBT50 x SCA40 - 90	261.8	90	40	30	40	55	55	10	43.7	M36 x 2.0P	5.00
5027-649-040-135	SBT50 x SCA40 - 135	306.8	135	40	30	40	55	55	10	43.7	M36 x 2.0P	6.00

## Features:

- ▶ Used with side milling cutter.
- ▶ Attached with a nut (DIN-2082-1) and bushes (DIN-2084-B).

## Product information:

- ▶ Nut standard: DIN-2082-1.
- ▶ Bush standard: DIN-2084-B.

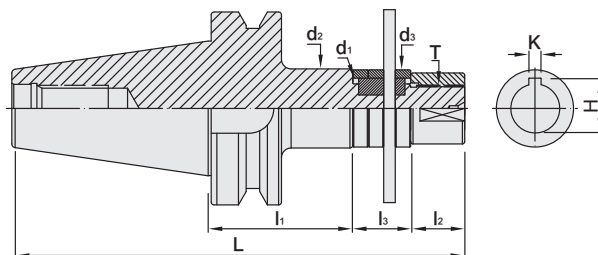
Pull Stud	Torque Wrench Adapter (Pull Stud)	Spanner (Pull Stud)
P.W-67~68	P.W-78	P.W-82



# SBT SIDE CUTTER ADAPTER

Dual  
DRIVE+

SBT / SCA 法蘭加厚型側銑刀桿



MODEL NO.	TYPE	L	l <sub>1</sub>	l <sub>2</sub>	l <sub>3</sub>	d <sub>1</sub>	d <sub>2</sub>	d <sub>3</sub>	K	H	T	WEIGHT (KGS)
5026-649-A56-295	SBT40 x SCA22.22 - 75	192.4	75	22	30	22.22	34	34	3.18	24.6	M20 x 1.5P	1.70
5026-649-A56-472	SBT40 x SCA22.22 - 120	237.4	120	22	30	22.22	34	34	3.18	24.6	M20 x 1.5P	2.00
5026-649-A64-295	SBT40 x SCA25.4 - 75	198.4	75	28	30	25.4	41	40	6.35	28.4	M24 x 1.5P	2.00
5026-649-A64-472	SBT40 x SCA25.4 - 120	243.4	120	28	30	25.4	41	40	6.35	28.4	M24 x 1.5P	2.40
5026-649-A72-354	SBT40 x SCA31.75 - 90	217.4	90	32	30	31.75	47	46	7.93	34.8	M30 x 1.5P	2.60
5027-649-A56-354	SBT50 x SCA22.22 - 90	243.8	90	22	30	22.22	34	34	3.18	24.6	M20 x 1.5P	4.40
5027-649-A56-531	SBT50 x SCA22.22 - 135	288.8	135	22	30	22.22	34	34	3.18	24.6	M20 x 1.5P	4.70
5027-649-A64-354	SBT50 x SCA25.4 - 90	249.8	90	28	30	25.4	41	40	6.35	28.4	M24 x 1.5P	4.50
5027-649-A64-531	SBT50 x SCA25.4 - 135	294.8	135	28	30	25.4	41	40	6.35	28.4	M24 x 1.5P	4.90
5027-649-A72-354	SBT50 x SCA31.75 - 90	253.8	90	32	30	31.75	47	46	7.93	34.8	M30 x 1.5P	4.70
5027-649-A72-531	SBT50 x SCA31.75 - 135	298.8	135	32	30	31.75	47	46	7.93	34.8	M30 x 1.5P	5.20
5027-649-A80-354	SBT50 x SCA38.1 - 90	261.8	90	40	30	38.1	55	55	9.525	42.4	M36 x 2.0P	4.90
5027-649-A80-531	SBT50 x SCA38.1 - 135	306.8	135	40	30	38.1	55	55	9.525	42.4	M36 x 2.0P	5.90

## Features:

- ▶ Used with side milling cutter.
- ▶ Attached with a nut (DIN-2082-1) and bushes (DIN-2084-B).

## Product information:

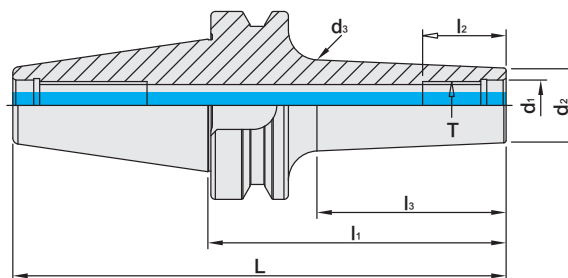
- ▶ Nut standard: DIN-2082-1.
- ▶ Bush standard: DIN-2084-B.

Pull Stud	Torque Wrench Adapter (Pull Stud)	Spanner (Pull Stud)
P.W-67~68	P.W-78	P.W-82



# SBT / SOM SCREWED END MILL HOLDER

SBT / SOM 法蘭加厚型螺紋鎖固式刀桿



MODEL NO.	TYPE	L	l <sub>1</sub>	l <sub>2</sub>	l <sub>3</sub>	d <sub>1</sub>	d <sub>2</sub>	d <sub>3</sub>	T	WEIGHT (KGS)
5026-670-006-100	SBT40 x SOM6 - 100	165.4	100	25	18.5	6.5	13	63.4	M6 x 1.0P	1.06
5026-670-008-100	SBT40 x SOM8 - 100	165.4	100	25	20.5	8.5	15	23.4	M8 x 1.25P	1.09
5026-670-010-100	SBT40 x SOM10 - 100	165.4	100	25	24.5	10.5	19	63.4	M10 x 1.5P	1.16
5026-670-012-100	SBT40 x SOM12 - 100	165.4	100	31	26.5	12.5	21	63.4	M12 x 1.75P	1.17
5026-670-016-100	SBT40 x SOM16 - 100	165.4	100	30	30.5	17	25	63.4	M16 x 2.0P	1.22
5026-670-016-125	SBT40 x SOM16 - 125	190.4	125	30	32.7	17	25	88.4	M16 x 2.0P	1.35
5027-670-012-100	SBT50 x SOM12 - 100	201.8	100	31	25.6	12.5	21	52.4	M12 x 1.75P	3.69
5027-670-012-125	SBT50 x SOM12 - 125	226.8	125	31	27.8	12.5	21	77.4	M12 x 1.75P	3.79
5027-670-012-150	SBT50 x SOM12 - 150	251.8	150	31	29.9	12.5	21	102.4	M12 x 1.75P	3.92
5027-670-012-200	SBT50 x SOM12 - 200	301.8	200	31	34.3	12.5	21	152.4	M12 x 1.75P	4.22
5027-670-016-100	SBT50 x SOM16 - 100	201.8	100	30	29.6	17	25	52.4	M16 x 2.0P	3.73
5027-670-016-125	SBT50 x SOM16 - 125	226.8	125	30	31.8	17	25	77.4	M16 x 2.0P	3.86
5027-670-016-150	SBT50 x SOM16 - 150	251.8	150	30	33.9	17	25	102.4	M16 x 2.0P	4.01
5027-670-016-200	SBT50 x SOM16 - 200	301.8	200	30	38.3	17	25	152.4	M16 x 2.0P	4.37

## Features:

- ▶ Used with STR, RG, and DM Screwed cutting tools

## Product information:

- ▶ AD+B type is available, please inform us when making an order.

Pull Stud	Torque Wrench Adapter (Pull Stud)	Spanner (Pull Stud)
		
P.W-67~68	P.W-78	P.W-82

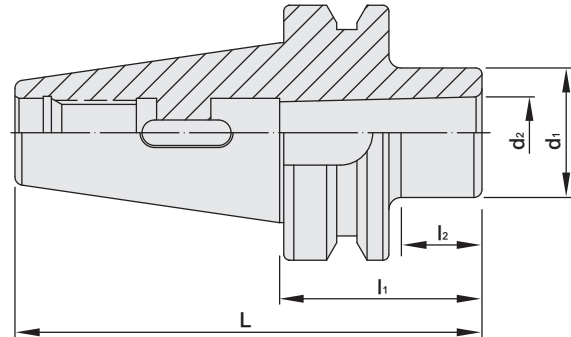
# SBT MORSE TAPER ADAPTER

## TANG TYPE

Dual  
DRIVE+

SBT / MTA 法蘭加厚型斜柄鑽頭套筒

(DIN 228-B)



MODEL NO.	TYPE	L	l <sub>1</sub>	l <sub>2</sub>	d <sub>1</sub>	d <sub>2</sub>	WEIGHT (KGS)
5025-465-001-045	SBT30 x MTA1 - 45	93.4	45	20	25	12.065	0.55
5025-465-001-105	SBT30 x MTA1 - 105	153.4	105	78	25	12.065	0.80
5025-465-002-060	SBT30 x MTA2 - 60	108.4	60	35	32	17.78	0.60
5025-465-002-120	SBT30 x MTA2 - 120	168.4	120	95	32	17.78	0.90
5025-465-003-080	SBT30 x MTA3 - 80	128.4	80	56	40	23.825	0.80
5026-465-001-045	SBT40 x MTA1 - 45	110.4	45	15	25	12.065	1.05
5026-465-001-120	SBT40 x MTA1 - 120	185.4	120	83	25	12.065	1.40
5026-465-002-050	SBT40 x MTA2 - 50	115.4	50	20	32	17.78	1.10
5026-465-002-120	SBT40 x MTA2 - 120	185.4	120	88	32	17.78	1.45
5026-465-003-070	SBT40 x MTA3 - 70	135.4	70	38	40	23.825	1.20
5026-465-003-135	SBT40 x MTA3 - 135	200.4	135	102	40	23.825	1.90
5026-465-004-095	SBT40 x MTA4 - 95	160.4	95	63	48	31.267	1.40
5026-465-004-165	SBT40 x MTA4 - 165	230.4	165	133	48	31.267	2.50
5027-465-001-045	SBT50 x MTA1 - 45	146.8	45	2	25	12.065	3.80
5027-465-001-120	SBT50 x MTA1 - 120	221.8	120	74	25	12.065	4.30
5027-465-001-180	SBT50 x MTA1 - 180	281.8	180	132	25	12.065	5.00
5027-465-002-060	SBT50 x MTA2 - 60	161.8	60	17	32	17.78	4.00
5027-465-002-135	SBT50 x MTA2 - 135	236.8	135	89	32	17.78	4.70
5027-465-002-180	SBT50 x MTA2 - 180	281.8	180	132	32	17.78	5.00
5027-465-003-065	SBT50 x MTA3 - 65	166.8	65	22	40	23.825	3.90
5027-465-003-150	SBT50 x MTA3 - 150	251.8	150	107	40	23.825	5.00
5027-465-003-180	SBT50 x MTA3 - 180	281.8	180	132	40	23.825	5.50
5027-465-004-095	SBT50 x MTA4 - 95	196.8	95	52	48	31.267	4.20
5027-465-004-180	SBT50 x MTA4 - 180	281.8	180	132	48	31.267	5.50
5027-465-005-105	SBT50 x MTA5 - 105	206.8	105	62	63	44.399	4.30

**Features:**

- ▶ The tools used are consistent with Morse Taper DIN228 FROM B (with Tang).

Pull Stud	Torque Wrench Adapter (Pull Stud)	Spanner (Pull Stud)
P.W-67~68	P.W-78	P.W-82



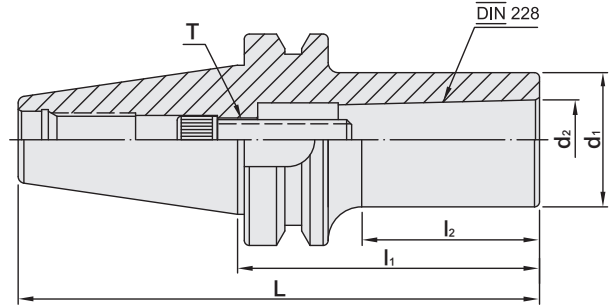
# SBT MORSE TAPER ADAPTER

## DRAW BAR TYPE

Dual  
DRIVE+

SBT / MTB 法蘭加厚型斜柄鑽頭套筒

(DIN 6364)



MODEL NO.	TYPE	L	l <sub>1</sub>	l <sub>2</sub>	d <sub>1</sub>	d <sub>2</sub>	T	WEIGHT (KGS)
5025-466-001-045	SBT30 x MTB1 - 45	93.4	45	20	25	12.065	M6 x 1.0P 1/4" - 20	0.55
5025-466-002-060	SBT30 x MTB2 - 60	108.4	60	36.5	32	17.78	M10 x 1.5P 3/8" - 16	0.60
5026-466-001-045	SBT40 x MTB1 - 45	110.4	45	13	25	12.065	M6 x 1.0P 1/4" - 20	1.10
5026-466-002-045	SBT40 x MTB2 - 45	110.4	45	13	32	17.78	M10 x 1.5P 3/8" - 16	1.10
5026-466-002-185	SBT40 x MTB2 - 185	250.4	185	148	32	17.78	M10 x 1.5P 3/8" - 16	1.86
5026-466-003-075	SBT40 x MTB3 - 75	140.4	75	45	40	23.825	M12 x 1.75P 1/2" - 12	1.30
5026-466-003-090	SBT40 x MTB3 - 90	155.4	90	53	40	23.825	M12 x 1.75P 1/2" - 12	1.40
5026-466-003-120	SBT40 x MTB3 - 120	185.4	120	83	40	23.825	M12 x 1.75P 1/2" - 12	1.80
5026-466-003-180	SBT40 x MTB3 - 180	245.4	180	143	40	23.825	M12 x 1.75P 1/2" - 12	2.40
5026-466-004-100	SBT40 x MTB4 - 100	165.4	100	67	48	31.267	M16 x 2.0P 5/8" - 11	1.60
5026-466-004-120	SBT40 x MTB4 - 120	185.4	120	87	48	31.267	M16 x 2.0P 5/8" - 11	1.80
5026-466-004-180	SBT40 x MTB4 - 180	245.4	180	147	48	31.267	M16 x 2.0P 5/8" - 11	2.60
5027-466-001-045	SBT50 x MTB1 - 45	146.8	45	6	25	12.065	M6 x 1.0P 1/4" - 20	3.80
5027-466-002-045	SBT50 x MTB2 - 45	146.8	45	5	32	17.78	M10 x 1.5P 3/8" - 16	3.90
5027-466-003-060	SBT50 x MTB3 - 60	161.8	60	12	40	23.825	M12 x 1.75P 1/2" - 12	3.90
5027-466-004-075	SBT50 x MTB4 - 75	176.8	75	32	48	31.267	M16 x 2.0P 5/8" - 11	4.20
5027-466-005-120	SBT50 x MTB5 - 120	221.8	120	77	63	44.399	M24 x 3.0P 1" - 8	4.30

**Features:**

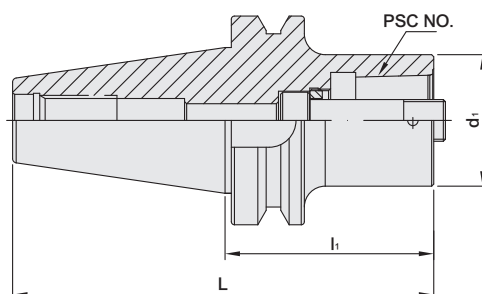
- ▶ MTB Morse Taper Adapter : The tools used are consistent with Morse Taper DIN228 FROM A (with Threads).

Pull Stud	Torque Wrench Adapter (Pull Stud)	Spanner (Pull Stud)
P.W-67~68	P.W-78	P.W-82

# SBT ADAPTER

Dual  
DRIVE+

SBT 法蘭加厚型套筒



MODEL NO.	TYPE	NO.	L	l <sub>1</sub>	d <sub>1</sub>	T	MAX. TORQUE		WEIGHT (KGS)
							Nm	ft-lbs	
5026-013-140-030	SBT40 x PSC32 - 30	PSC32	95.4	30	32	M12 x 1.5P	45	33	1.70
5026-013-141-030	SBT40 x PSC40 - 30	PSC40	95.4	30	40	M14 x 1.5P	55	40	1.70
5026-013-142-030	SBT40 x PSC50 - 30	PSC50	95.4	30	50	M16 x 1.5P	95	70	1.70
5026-013-143-075	SBT40 x PSC63 - 75	PSC63	140.4	75	63	M20 x 2.0P	170	125	1.90
5026-013-144-135	SBT40 x PSC80 - 135	PSC80	200.4	135	80	M20 x 2.0P	170	125	3.78
5027-013-140-040	SBT50 x PSC32 - 40	PSC32	141.8	40	32	M12 x 1.5P	45	33	4.80
5027-013-141-040	SBT50 x PSC40 - 40	PSC40	141.8	40	40	M14 x 1.5P	55	40	4.80
5027-013-142-040	SBT50 x PSC50 - 40	PSC50	141.8	40	50	M16 x 1.5P	95	70	4.80
5027-013-143-100	SBT50 x PSC63 - 100	PSC63	201.8	100	63	M20 x 2.0P	170	125	4.68
5027-013-143-150	SBT50 x PSC63 - 150	PSC63	251.8	150	63	M20 x 2.0P	170	125	5.75
5027-013-143-200	SBT50 x PSC63 - 200	PSC63	301.8	200	63	M20 x 2.0P	170	125	6.81
5027-013-143-250	SBT50 x PSC63 - 250	PSC63	351.8	250	63	M20 x 2.0P	170	125	7.88
5027-013-143-300	SBT50 x PSC63 - 300	PSC63	401.8	300	63	M20 x 2.0P	170	125	8.73
5027-013-144-070	SBT50 x PSC80 - 70	PSC80	171.8	70	80	M20 x 2.0P	170	125	3.91
5027-013-144-093	SBT50 x PSC80 - 93	PSC80	194.8	93	80	M20 x 2.0P	170	125	4.73
5027-013-144-120	SBT50 x PSC80 - 120	PSC80	221.8	120	80	M20 x 2.0P	170	125	5.71
5027-013-144-183	SBT50 x PSC80 - 183	PSC80	284.8	183	80	M20 x 2.0P	170	125	7.98
5027-013-144-243	SBT50 x PSC80 - 243	PSC80	344.8	243	80	M20 x 2.0P	170	125	10.14

**Features:**

► Convert the machine taper for use with different taper types or taper sizes of tool holders, or offer great flexibility by extending the tooling length.

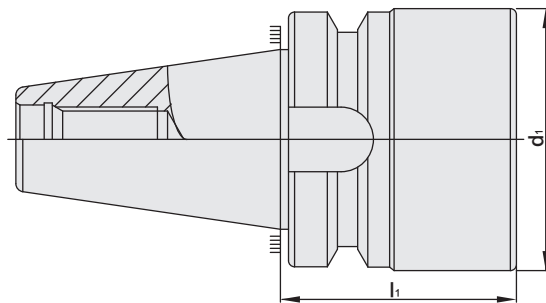
Pull Stud	Torque Wrench Adapter (Pull Stud)	Spanner (Pull Stud)
P.W-67~68	P.W-78	P.W-82



# SBT BLANK

Dual  
DRIVE+

SBT 法蘭加厚型素材



MODEL NO.	TYPE	$l_1$	$d_1$	WEIGHT (KGS)
5025-001-048-076	SBT30 x Ø48 - 3"	76.2	48	1.12
5025-001-048-102	SBT30 x Ø48 - 4"	101.6	48	1.48
5025-001-048-127	SBT30 x Ø48 - 5"	127	48	1.83

**Features:**

► Blanks can be machined according to customer demands. It is not recommended to do heat treatment after machining.

Pull Stud	Torque Wrench Adapter (Pull Stud)	Spanner (Pull Stud)
		
P.W-67~68	P.W-78	P.W-82



# MEMO

Blank lined area for writing a memo.

