

# PSC

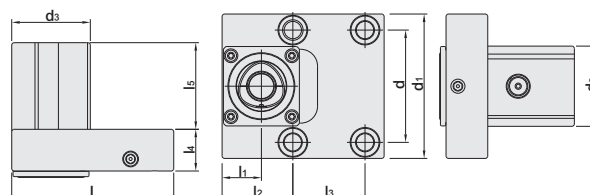
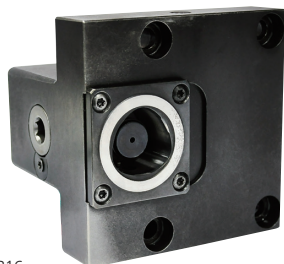
# CATEGORY

ISO 26623 - 1

EOTP ONE-PIECE EXTERNAL TOOL POST	H-2
IOTP ONE-PIECE INTERNAL TOOL POST	H-2
IOTP-QR ONE-PIECE INTERNAL TOOL POST	H-3
AL ADAPTER	H-4
HIGH-PRESSURE COOLANT PIPE	H-4
EXTERNAL TURNING TOOL	H-7~16
EXTERNAL TURNING TOOL HOLDER	H-17~20
PSC / SLT SIDE LOCK HOLDER FOR INTERNAL TURNING BAR	H-21
PSC / STUP INTERNAL BORING BAR	H-22
PSC / SCLC INTERNAL BORING BAR	H-23
PSC / SDUC INTERNAL BORING BAR	H-24
PSC / IAP INDEXABLE END MILL CUTTER	H-25
PSC / CIAP INDEXABLE END MILL CUTTER	H-26
PSC / MAP INDEXABLE END MILL CUTTER	H-27
PSC / CMAP INDEXABLE END MILL CUTTER	H-28
PSC / SPD HIGH SPEED DRILL	H-29~30
PRO-E COLLET CHUCK	H-31~34
UT COLLET CHUCK	H-35~36
ER COLLET CHUCK	H-37
SKX COLLET CHUCK	H-38
SK3 COLLET CHUCK	H-39
SKS COLLET CHUCK	H-40
SBL SLIM-FIT COLLET CHUCK	H-41
SBLC SLIM-FIT COLLET CHUCK	H-42
EBL SLIM-FIT COLLET CHUCK	H-43
HBL SLIM-FIT COLLECT CHUCK	H-44
MLD MULTI - LOCK MILLING CHUCK	H-45~46
SLN SIDE LOCK END MILL HOLDER	H-47~49
FACE MILL ARBOR [FMA/FMB TYPE]	H-50~51
FACE MILL ARBOR [FMC TYPE]	H-52
QTC QUICK CHANGE TAPPING CHUCK	H-53
SCA SIDE CUTTER ADAPTER	H-54
EXTENSION ADAPTER	H-55~56
BLANK	H-57

# EOTP ONE-PIECE EXTERNAL TOOL POST FOR LATHE

## EOTP 一體式外徑刀座



TW PAT NO. M507816  
J P PAT NO. 3203371  
D E PAT NO. Nr.202016100572

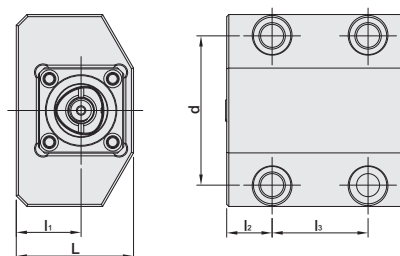
MODEL NO.	TYPE	L	l <sub>1</sub>	l <sub>2</sub>	l <sub>3</sub>	l <sub>4</sub>	l <sub>5</sub>	d	d <sub>1</sub>	d <sub>2</sub>	d <sub>3</sub>	APPLICABLE TYPE	MACHINE BRAND	WEIGHT (KGS)
5305-091-00	EOTP40 - OR	108.5	24.5	43.5	35	26	54	76	105	50	49	PSC40	VICTOR TAICHUNG	2.81
5305-092-00	EOTP40 - HA	101	24.5	44.1	45	26	54	70	90	50	49	PSC40	HAAS	2.40
5305-093-00	EOTP40 - MO	108.5	24.5	44	35	26	54	76	105	50	49	PSC40	DMG MORI	2.88
5305-094-00	EOTP40 - MA	104	24.5	32.75	60	33.5	45	84	104	49	47.75	PSC40	MAZAK	2.90
5305-095-00	EOTP40 - GW	114	24.5	49	35	26	54	76	105	50	49	PSC40	GOODWAY	2.99
5305-097-00	EOTP40 - EX	104	24.5	39	45	26	54	92	114	50	59	PSC40	TAKISAWA	2.90

Product information: ▶ Refer to P.H-7~16 for turning tool.

# IOTP ONE-PIECE INTERNAL TOOL POST FOR LATHE

## IOTP 一體式內徑刀座 [後拉式]

Lock from here →



TW PAT NO. M507816  
J P PAT NO. 3203371  
D E PAT NO. Nr.202016100572

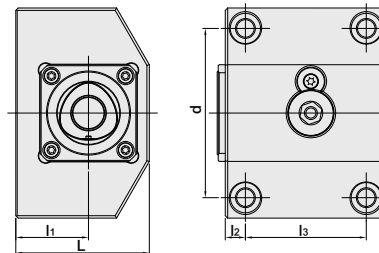
MODEL NO.	TYPE	L	l <sub>1</sub>	l <sub>2</sub>	l <sub>3</sub>	d	APPLICABLE TYPE	MACHINE BRAND	WEIGHT (KGS)
5305-172-00	IOTP40 - HA	60	30.4	21.3	45	70	PSC40	HAAS	2.70
5305-174-00	IOTP40 - MA	93.2	63	10	60	84	PSC40	MAZAK	4.41
5305-173-00	IOTP40 - MO	80	46	25	35	76	PSC40	DMG MORI	4.10
5305-171-00	IOTP40 - OR	81	46	25	35	76	PSC40	VICTOR TAICHUNG	4.15
5305-175-00	IOTP40 - GW	75	40	25	35	76	PSC40	GOODWAY	4.20

### Features:

- ▶ One-piece tool post can be customized as per customer's machines.
- ▶ One-piece tool post with PSC interface.
- ▶ Quick tool change in 10~30 seconds.
- ▶ PSC interface achieves high repeated positional precision  $\pm 2\mu\text{m}$ .
- ▶ Durable for high coolant pressure 130 bar.

# IOTP-QR ONE-PIECE INTERNAL TOOL POST FOR LATHE

## IOTP-QR 一體式內徑刀座



MODEL NO.	TYPE	L	l <sub>1</sub>	l <sub>2</sub>	l <sub>3</sub>	d	APPLICABLE TYPE	MACHINE BRAND	WEIGHT (KGS)
5305-134-00	IOTP40 - QR - MA	89.5	63	10	60	84	PSC40	MAZAK	4.92
5305-133-00	IOTP40 - QR - MO	72.5	46	25	35	76	PSC40	DMG MORI	4.47
5305-131-00	IOTP40 - QR - OR	72.5	46	25	35	76	PSC40	VICTOR TAICHUNG	4.52
5305-135-00	IOTP40 - QR - GW	66.5	40	25	35	76	PSC40	GOODWAY	4.46
5305-138-00	IOTP40 - QR - YI	66.5	40	14	42	68	PSC40	YANG IRON	4.47
5305-138-01	IOTP40 - QR - YI - 8"	85.5	59	21.5	56	88	PSC40	YANG IRON	5.35
5305-137-00	IOTP40 - QR - EX	70.2	30.2	20	45	92	PSC40	TAKISAWA	5.25

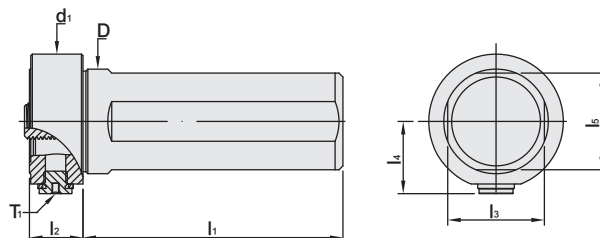
### Features:

- ▶ One-piece tool post can be customized as per customer's machines.
- ▶ One-piece tool post with PSC interface.
- ▶ Quick tool change in 10~30 seconds.
- ▶ PSC interface achieves high repeated positional precision  $\pm 2\mu\text{m}$ .
- ▶ Durable for high coolant pressure 130 bar.



# AL ADAPTER FOR LATHE

AL 車床套筒 [ PSC 刀桿專用 ]



MODEL NO.	TYPE	l <sub>1</sub>	l <sub>2</sub>	l <sub>3</sub>	l <sub>4</sub>	l <sub>5</sub>	D	d <sub>1</sub>	T <sub>1</sub>	APPLICABLE MACHINE	WEIGHT (KGS)
5152-013-310-073	AL3 x C25 - 73	73	25	23	26	23	25	45.5	PF1/8	-	0.48
5152-013-320-080	AL3 x C32 - 80	80	18	30	26	30	32	45.5	PF1/8	-	0.53
5152-013-321-080	AL3 x C32 - 80 - A	80	18	30	26	30	32	45.5	PF1/8	OR	0.57
5152-013-330-100	AL3 x C40 - 100	100	18	37	26	37	40	45.5	PF1/8	-	0.94
5152-013-430-100	AL4 x C40 - 100	99.5	20.5	37	28	37	40	51.5	PF1/8	-	0.99
5152-013-431-100	AL4 x C40 - 100 - A	99.5	20.5	37	28	37	40	51.5	PF1/8	OR	0.98
5152-013-438-100	AL4 x C40 - 100 - B	99.5	20.5	37	28	38.5	40	51.5	PF1/8	YIPC	0.99
5152-013-540-120	AL5 x C50 - 120	120	24	47	33	47	50	61.5	PF1/8	-	1.82

#### Wrench



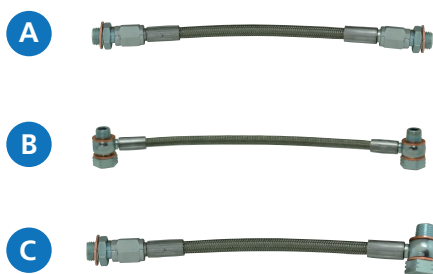
PW-80

#### Features:

- ▶ Used with PSC tool holders. ▶ Quick change design. ▶ Modular system: internal hole 25 32 40 50.

# HIGH-PRESSURE COOLANT PIPE

高壓水管 [ 用於 AL 套筒 ]



MODEL NO.	TYPE	LENGTH	MAX. WATER PRESSURE
5310-3150	HOSE - A - 150	150	80 bar
5310-3200	HOSE - A - 200	200	80 bar
5310-4150	HOSE - B - 150	150	80 bar
5310-4200	HOSE - B - 200	200	80 bar
5310-5150	HOSE - C - 150	150	80 bar
5310-5200	HOSE - C - 200	200	80 bar

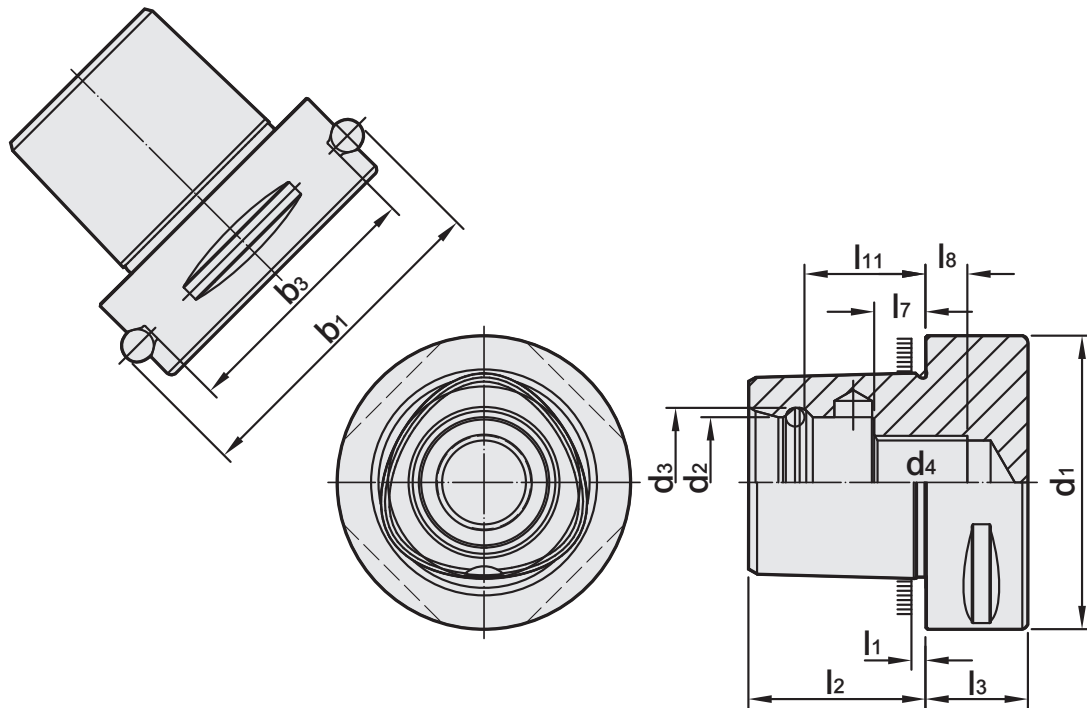
#### Features:

- ▶ Used for AL adapter.

# REFERENCE DETAILS

## DIN ISO 26623 - 1

- ▶ Shank body standard: **DIN ISO 26623-1**
- ▶ Taper tolerance < **AT3**
- ▶ Hardness > **HRC 56°**
- ▶ Surface roughness: Ra < **0.25 μm**
- ▶ Roundness < **0.8 μm**
- ▶ Carbon depth > **0.8mm**
- ▶ The shank has pre-balance at G6.3, and can provide precision balance at G2.5. It can be ordered by request.



PSC	$b_1$ $\pm 0.1$	$b_3$ $\pm 0.1$	$d_1$ $\pm 0.1$	$d_2$ $+0.1$ $-0.05$	$d_3$ $\pm 0.05$	$d_4$
32	39	27.9	32	15	16.5	M12 x 1.5P
40	46	34.9	40	18	20	M14 x 1.5P
50	59.3	44	50	21	24	M16 x 1.5P
63	70.7	55.4	63	28	32	M20 x 2.0P
80	86	70.7	80	32	38	M20 x 2.0P
80X	110	88.3	100	32	38	M20 x 2.0P
100	110	88.3	100	43	50.5	M24 x 2.0P
PSC	$l_1$	$l_2$ $\pm 0.1$	$l_3$ min	$l_7$ $\pm 0.15$	$l_8$ min	$l_{11}$ $\pm 0.1$
32	2.5	19	15	6	6	13.5
40	2.5	24	20	9	6	17.5
50	3	30	20	10	7	22
63	3	38	22	11	9	26
80	3	48	30	20	0	34
80X	3	48	32	20	0	34
100	3	60	36	20	10	42.5



# DESIGNATION OF PSC

## PSC 編碼原則

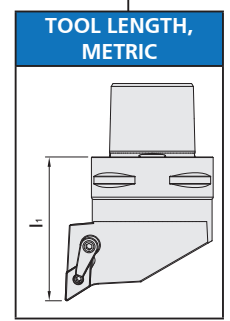
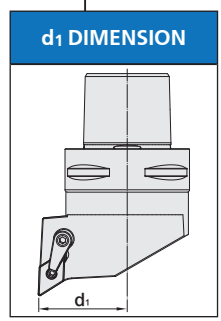
INTERFACE SIZE	CLAMP MECHANISM		INSERT CLEARANCE	INSERT EDGE LENGTH						
PSC32 (C3)	<b>A</b> Back clamp system	<b>M</b> Multi-clamp system		Insert inscribed circle	6.35	7.94	9.525	12.00	12.70	
PSC40 (C4)				<b>C</b> Clamp-on system	<b>P</b> Pin lock system		06	08	09	-
PSC50 (C5)	<b>D</b> Double clamp system	<b>S</b> Screw-on system		<b>B</b> 5°		07	-	11	-	15
PSC63 (C6)				<b>E</b> Off-set pin system	<b>T</b> Taper lock system	<b>C</b> 7°		11	-	16
PSC80 (C8)	<b>JS</b> Screw-on system	<b>W</b> Wedge-on system		<b>D</b> 15°		-	-	-	12	-
PSC80X (C8X)				<b>JT</b> Back clamp system		<b>E</b> 20°		-	-	-
PSC100 (CP)				<b>F</b> 25°		11	13	16	-	22
				<b>G</b> 30°		-	-	09	-	12
				<b>N</b> 0°		-	-	06	-	08
				<b>P</b> 11°		-	-	06	-	08

**PSC 63 - M C L N R - 45 065 12**

INSERT GEOMETRY		
C		80°
D		55°
K		55°
R		
S		
T		
V		35°
W		80°
L		
H		120°
A		85°
B		82°
E		75°
M		86°
O		135°
P		108°

CUTTING EDGE GEOMETRY			
A - 90°		M - 50°	
B - 75°		N - 63°	
C - 90°		P - 117.5°	
D - 45°		R - 75°	
E - 60°		S - 45°	
F - 90°		T - 60°	
G - 90°		U - 93°	
H - 107.5°		V - 72.5°	
J - 93°		W - 60°	
K - 75°		Y - 85°	
L - 95°			

HAND
R
L
N

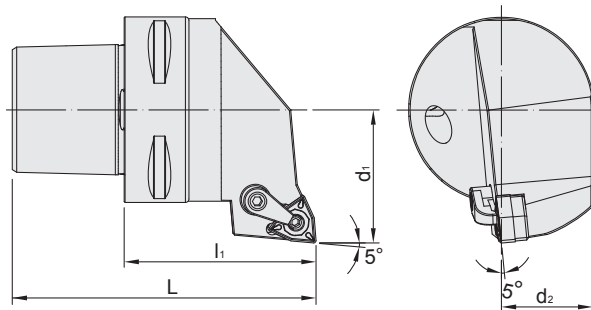


# PSC / MWLN EXTERNAL TURNING TOOL

## PSC / MWLN 外徑車刀



台灣精品 2012  
TAIWAN EXCELLENCE



MODEL NO.	TYPE	L	l <sub>1</sub>	d <sub>1</sub>	d <sub>2</sub>	Insert	WEIGHT (KGS)
5140-478-08R-045	PSC32 - MWLNR - 22045 - 08	64	45	22	18.1	WN..0804	0.22
5140-478-08L-045	PSC32 - MWLNL - 22045 - 08	64	45	22	18.1	WN..0804	0.22
5141-478-08R-050	PSC40 - MWLNR - 27050 - 08	74	50	27	22.5	WN..0804	0.42
5141-478-08L-050	PSC40 - MWLNL - 27050 - 08	74	50	27	22.5	WN..0804	0.42
5142-478-08R-060	PSC50 - MWLNR - 35060 - 08	90	60	35	28.65	WN..0804	0.78
5142-478-08L-060	PSC50 - MWLNL - 35060 - 08	90	60	35	28.65	WN..0804	0.78
5143-478-08R-065	PSC63 - MWLNR - 45065 - 08	103	65	45	31	WN..0804	0.80
5143-478-08L-065	PSC63 - MWLNL - 45065 - 08	103	65	45	31	WN..0804	0.80

### Features:

- ▶ Ideal for CNC lathes and millturn machines.
- ▶ The polygonal taper is based on ISO26623-1 with superior torque transmission, bending strength and repeated positional precision.

### Product information:

- ▶ Inserts are optional accessories. Need to be purchased additionally.

### Accessory:

Insert	Clamp	Shim	Screw	Screw
				
WN..0804	MC620	SMW422	MS630	MLP46L-A

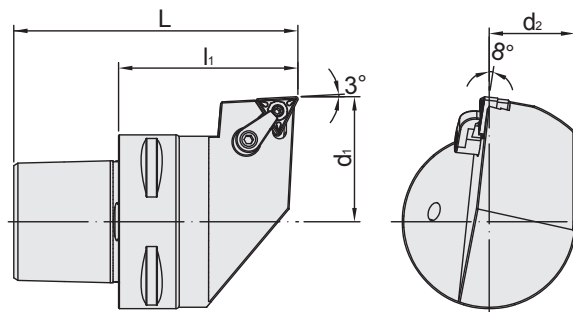


# PSC / MTJN EXTERNAL TURNING TOOL

## PSC / MTJN 外徑車刀



台灣精品 2012  
TAIWAN EXCELLENCE



MODEL NO.	TYPE	L	l <sub>1</sub>	d <sub>1</sub>	d <sub>2</sub>	Insert	WEIGHT (KGS)
5140-477-16R-045	PSC32 - MTJNR - 22045 - 16	64	45	22	18.1	TN..1604	0.22
5140-477-16L-045	PSC32 - MTJNL - 22045 - 16	64	45	22	18.1	TN..1604	0.22
5141-477-16R-050	PSC40 - MTJNR - 27050 - 16	74	50	27	22.5	TN..1604	0.42
5141-477-16L-050	PSC40 - MTJNL - 27050 - 16	74	50	27	22.5	TN..1604	0.42
5142-477-16R-060	PSC50 - MTJNR - 35060 - 16	90	60	35	28.65	TN..1604	0.78
5142-477-16L-060	PSC50 - MTJNL - 35060 - 16	90	60	35	28.65	TN..1604	0.78
5143-477-16R-065	PSC63 - MTJNR - 45065 - 16	103	65	45	31	TN..1604	0.80
5143-477-16L-065	PSC63 - MTJNL - 45065 - 16	103	65	45	31	TN..1604	0.80

### Features:

- ▶ Ideal for CNC lathes and millturn machines.
- ▶ The polygonal taper is based on ISO26623-1 with superior torque transmission, bending strength and repeated positional precision.

### Product information:

- ▶ Inserts are optional accessories. Need to be purchased additionally.

### Accessory:

Insert	Clamp	Shim	Screw	Screw
TN..1604	MC620	SMT322	MS630	MLP34L-A

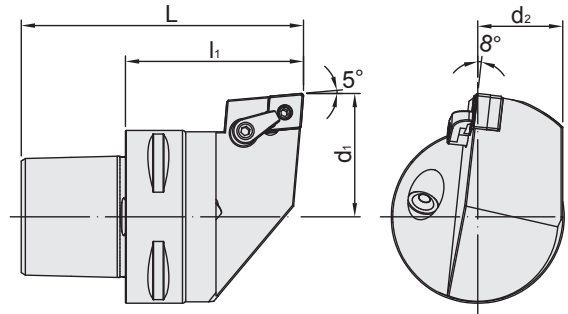


# PSC / MCLN EXTERNAL TURNING TOOL

## PSC / MCLN 外徑車刀



台灣精品 2012  
TAIWAN EXCELLENCE



MODEL NO.	TYPE	L	l <sub>1</sub>	d <sub>1</sub>	d <sub>2</sub>	Insert	WEIGHT (KGS)
5140-475-12R-045	PSC32 - MCLNR - 22045 - 12	64	45	22	18.1	CN..1204	0.22
5140-475-12L-045	PSC32 - MCLNL - 22045 - 12	64	45	22	18.1	CN..1204	0.22
5141-475-12R-050	PSC40 - MCLNR - 27050 - 12	74	50	27	22.5	CN..1204	0.42
5141-475-12L-050	PSC40 - MCLNL - 27050 - 12	74	50	27	22.5	CN..1204	0.42
5142-475-12R-060	PSC50 - MCLNR - 35060 - 12	90	60	35	28.65	CN..1204	0.78
5142-475-12L-060	PSC50 - MCLNL - 35060 - 12	90	60	35	28.65	CN..1204	0.78
5143-475-12R-065	PSC63 - MCLNR - 45065 - 12	103	65	45	31	CN..1204	0.80
5143-475-12L-065	PSC63 - MCLNL - 45065 - 12	103	65	45	31	CN..1204	0.80

### Features:

- ▶ Ideal for CNC lathes and millturn machines.
- ▶ The polygonal taper is based on ISO26623-1 with superior torque transmission, bending strength and repeated positional precision.

### Product information:

- ▶ Inserts are optional accessories. Need to be purchased additionally.

### Accessory:

Insert	Clamp	Shim	Screw	Screw
				
CN..1204	MC620	SMC432	MS620	MLP46L-A

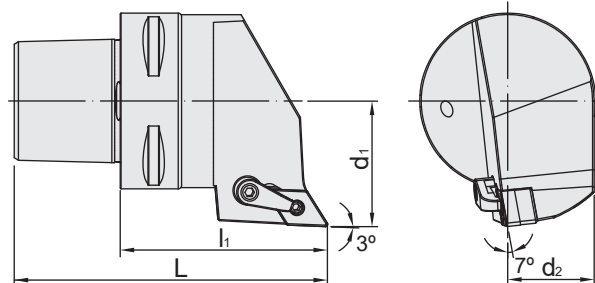


# PSC / MDJN EXTERNAL TURNING TOOL

## PSC / MDJN 外徑車刀



台灣精品 2012  
TAIWAN EXCELLENCE



MODEL NO.	TYPE	L	l <sub>1</sub>	d <sub>1</sub>	d <sub>2</sub>	Insert	WEIGHT (KGS)
5140-476-15R-045	PSC32 - MDJNR - 22045 - 15	64	45	22	18.1	DN..1504	0.22
5140-476-15L-045	PSC32 - MDJNL - 22045 - 15	64	45	22	18.1	DN..1504	0.22
5141-476-15R-050	PSC40 - MDJNR - 27050 - 15	74	50	27	22.5	DN..1504	0.42
5141-476-15L-050	PSC40 - MDJNL - 27050 - 15	74	50	27	22.5	DN..1504	0.42
5142-476-15R-060	PSC50 - MDJNR - 35060 - 15	90	60	35	28.65	DN..1504	0.78
5142-476-15L-060	PSC50 - MDJNL - 35060 - 15	90	60	35	28.65	DN..1504	0.78
5143-476-15R-075	PSC63 - MDJNR - 45075 - 15	113	75	45	31	DN..1504	0.80
5143-476-15L-075	PSC63 - MDJNL - 45075 - 15	113	75	45	31	DN..1504	0.80

### Features:

- ▶ Ideal for CNC lathes and millturn machines.
- ▶ The polygonal taper is based on ISO26623-1 with superior torque transmission, bending strength and repeated positional precision.

### Product information:

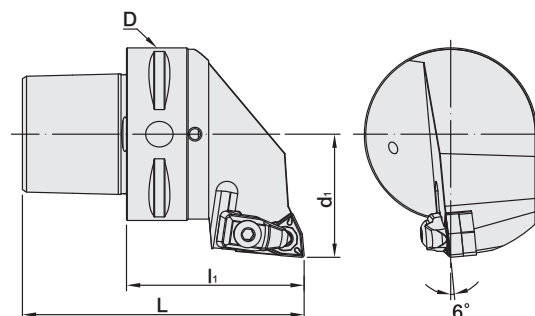
- ▶ Inserts are optional accessories. Need to be purchased additionally.

### Accessory:

Insert	Clamp	Shim	Screw	Screw
				
DN..1504	MC622	SMD463	MS630	MLP46L-A

# PSC / DWLN EXTERNAL TURNING TOOL

## PSC / DWLN 外徑車刀



MODEL NO.	TYPE	L	l <sub>1</sub>	D	d <sub>1</sub>	Insert	WEIGHT (KGS)
5141-093-08R-050	PSC40 - DWLNR - 27050 - 08	74	50	40	27	WN..0804	0.42
5141-093-08L-050	PSC40 - DWLNL - 27050 - 08	74	50	40	27	WN..0804	0.42
5142-093-08R-060	PSC50 - DWLNR - 35060 - 08	90	60	50	35	WN..0804	0.78
5142-093-08L-060	PSC50 - DWLNL - 35060 - 08	90	60	50	35	WN..0804	0.78
5143-093-08R-065	PSC63 - DWLNR - 45065 - 08	103	65	63	45	WN..0804	0.80
5143-093-08L-065	PSC63 - DWLNL - 45065 - 08	103	65	63	45	WN..0804	0.80
5144-093-08R-080	PSC80 - DWLNR - 55080 - 08	128	80	80	55	WN..0804	2.64
5144-093-08L-080	PSC80 - DWLNL - 55080 - 08	128	80	80	55	WN..0804	2.64




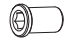
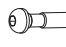

### Features:

- ▶ Ideal for CNC lathes and millturn machines.
- ▶ The polygonal taper is based on ISO26623-1 with superior torque transmission, bending strength and repeated positional precision.

### Product information:

- ▶ Inserts are optional accessories. Need to be purchased additionally.

### Accessory:

Insert	Clamp	Shim	Screw	Screw	Spring
					
WN..0804	C2RA	W08BM	SM6x10xA1	CM6x25C	SPR4

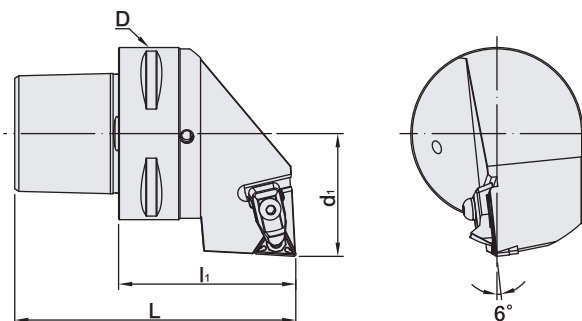


# PSC / DTJN EXTERNAL TURNING TOOL

## PSC / DTJN 外徑車刀



台灣精品 2012  
TAIWAN EXCELLENCE



MODEL NO.	TYPE	L	l <sub>1</sub>	D	d <sub>1</sub>	Insert	WEIGHT (KGS)
5140-092-16R-040	PSC32 - DTJNR - 22040 - 16	59	40	32	22	TN..1604	0.22
5140-092-16L-040	PSC32 - DTJNL - 22040 - 16	59	40	32	22	TN..1604	0.22
5141-092-16R-050	PSC40 - DTJNR - 27050 - 16	74	50	40	27	TN..1604	0.42
5141-092-16L-050	PSC40 - DTJNL - 27050 - 16	74	50	40	27	TN..1604	0.42
5142-092-16R-060	PSC50 - DTJNR - 35060 - 16	90	60	50	35	TN..1604	0.78
5142-092-16L-060	PSC50 - DTJNL - 35060 - 16	90	60	50	35	TN..1604	0.78
5143-092-16R-065	PSC63 - DTJNR - 45065 - 16	103	65	63	45	TN..1604	0.80
5143-092-16L-065	PSC63 - DTJNL - 45065 - 16	103	65	63	45	TN..1604	0.80




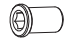
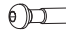

### Features:

- ▶ Ideal for CNC lathes and millturn machines.
- ▶ The polygonal taper is based on ISO26623-1 with superior torque transmission, bending strength and repeated positional precision.

### Product information:

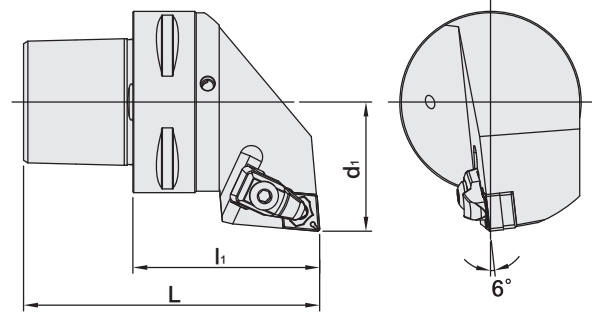
- ▶ Inserts are optional accessories. Need to be purchased additionally.

### Accessory:

Insert	Clamp	Shim	Screw	Screw	Spring
					
TN..1604	C1RA	T16BM	SM5x8.65xA1	CM5X22C	SPR6

# PSC / DCLN EXTERNAL TURNING TOOL

## PSC / DCLN 外徑車刀



MODEL NO.	TYPE	L	l <sub>1</sub>	d <sub>1</sub>	Insert	WEIGHT (KGS)
5140-090-12R-045	PSC32 - DCLNR - 22045 - 12	64	45	22	CN..1204	0.22
5140-090-12L-045	PSC32 - DCLNL - 22045 - 12	64	45	22	CN..1204	0.22
5141-090-12R-050	PSC40 - DCLNR - 27050 - 12	74	50	27	CN..1204	0.42
5141-090-12L-050	PSC40 - DCLNL - 27050 - 12	74	50	27	CN..1204	0.42
5142-090-12R-060	PSC50 - DCLNR - 35060 - 12	90	60	35	CN..1204	0.78
5142-090-12L-060	PSC50 - DCLNL - 35060 - 12	90	60	35	CN..1204	0.78
5143-090-12R-065	PSC63 - DCLNR - 45065 - 12	103	65	45	CN..1204	0.80
5143-090-12L-065	PSC63 - DCLNL - 45065 - 12	103	65	45	CN..1204	0.80
5144-090-12R-080	PSC80 - DCLNR - 55080 - 12	128	80	55	CN..1204	2.64
5144-090-12L-080	PSC80 - DCLNL - 55080 - 12	128	80	55	CN..1204	2.64







### Features:

- ▶ Ideal for CNC lathes and millturn machines.
- ▶ The polygonal taper is based on ISO26623-1 with superior torque transmission, bending strength and repeated positional precision.

### Product information:

- ▶ Inserts are optional accessories. Need to be purchased additionally.

### Accessory:

Insert	Clamp	Shim	Screw	Screw	Spring
					
CN..1204	C2RA	C12BM	SM6x10xA1	CM6x25C	SPR4

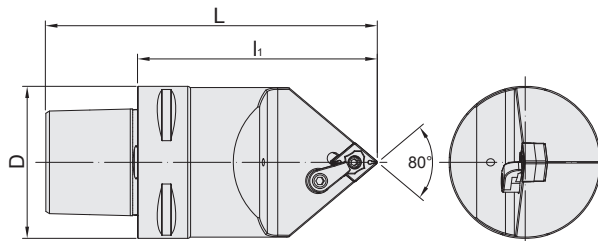


# PSC / MCMN EXTERNAL TURNING TOOL

PSC / MCMN 外徑車刀




台灣精品 2012  
TAIWAN EXCELLENCE



MODEL NO.	TYPE	L	l <sub>1</sub>	D	Insert	WEIGHT (KGS)
5140-480-12N-050	PSC32 - MCMNN - 00050 - 12	69	50	32	CN..1204	0.24
5141-480-12N-060	PSC40 - MCMNN - 00060 - 12	84	60	40	CN..1204	0.44
5142-480-12N-070	PSC50 - MCMNN - 00070 - 12	100	70	50	CN..1204	0.76
5143-480-12N-100	PSC63 - MCMNN - 00100 - 12	138	100	63	CN..1204	0.86

### Accessory:

Insert	Clamp	Shim	Screw	Screw
				
CN..1204	MC620	SMC432	MS620	MLP46L-A

### Features:

- ▶ Ideal for CNC lathes and millturn machines.
- ▶ The polygonal taper is based on ISO26623-1 with superior torque transmission, bending strength and repeated positional precision.

### Product information:

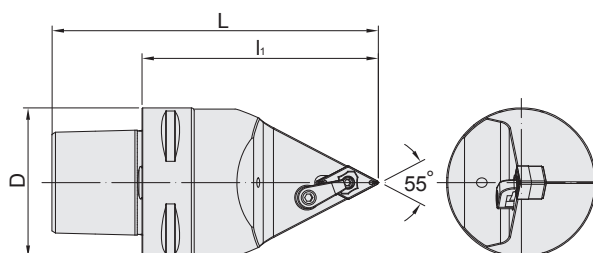
- ▶ Inserts are optional accessories. Need to be purchased additionally.

# PSC / MDNN EXTERNAL TURNING TOOL

PSC / MDNN 外徑車刀








台灣精品 2012  
TAIWAN EXCELLENCE



MODEL NO.	TYPE	L	l <sub>1</sub>	D	Insert	WEIGHT (KGS)
5140-481-15N-050	PSC32 - MDNNN - 00050 - 15	69	50	32	DN..1504	0.22
5141-481-15N-060	PSC40 - MDNNN - 00060 - 15	84	60	40	DN..1504	0.40
5142-481-15N-070	PSC50 - MDNNN - 00070 - 15	100	70	50	DN..1504	0.70
5143-481-15N-100	PSC63 - MDNNN - 00100 - 15	138	100	63	DN..1504	0.80

### Accessory:

Insert	Clamp	Shim	Screw	Screw
				
DN..1504	MC622	SMD463	MS625	MLP46L-A

### Features:

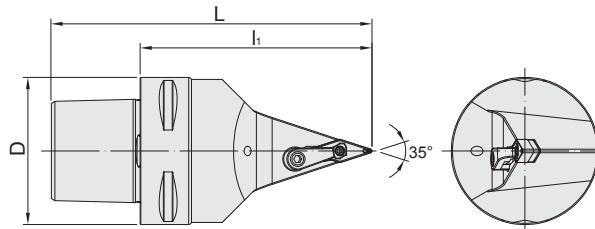
- ▶ Ideal for CNC lathes and millturn machines.
- ▶ The polygonal taper is based on ISO26623-1 with superior torque transmission, bending strength and repeated positional precision.

### Product information:

- ▶ Inserts are optional accessories. Need to be purchased additionally.

# PSC / MVVN EXTERNAL TURNING TOOL

## PSC / MVVN 外徑車刀



MODEL NO.	TYPE	L	l <sub>1</sub>	D	Insert	WEIGHT (KGS)
5140-484-16N-055	PSC32 - MVVNN - 00055 - 16	74	55	32	VN..1604	0.22
5141-484-16N-060	PSC40 - MVVNN - 00060 - 16	84	60	40	VN..1604	0.38
5142-484-16N-070	PSC50 - MVVNN - 00070 - 16	100	70	50	VN..1604	0.68
5143-484-16N-100	PSC63 - MVVNN - 00100 - 16	138	100	63	VN..1604	0.78

### Features:

- ▶ Ideal for CNC lathes and millturn machines.
- ▶ The polygonal taper is based on ISO26623-1 with superior torque transmission, bending strength and repeated positional precision.

### Product information:

- ▶ Inserts are optional accessories. Need to be purchased additionally.

### Accessory:

Insert	Clamp	Shim	Screw	Screw
				
VN..1604	MC622	SMV322	MS630	MLP34L-A

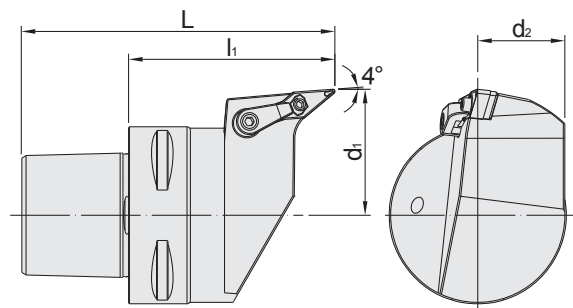


# PSC / MVLN EXTERNAL TURNING TOOL

## PSC / MVLN 外徑車刀



台灣精品 2012  
TAIWAN EXCELLENCE



MODEL NO.	TYPE	L	l <sub>1</sub>	d <sub>1</sub>	d <sub>2</sub>	Insert	WEIGHT (KGS)
5140-479-16R-050	PSC32 - MVLNR - 20050 - 16	69	50	20	18.1	VN..1604	0.22
5140-479-16L-050	PSC32 - MVLNL - 20050 - 16	69	50	20	18.1	VN..1604	0.22
5141-479-16R-055	PSC40 - MVLNR - 27055 - 16	79	55	27	22.5	VN..1604	0.42
5141-479-16L-055	PSC40 - MVLNL - 27055 - 16	79	55	27	22.5	VN..1604	0.42
5142-479-16R-060	PSC50 - MVLNR - 35060 - 16	90	60	35	28.65	VN..1604	0.78
5142-479-16L-060	PSC50 - MVLNL - 35060 - 16	90	60	35	28.65	VN..1604	0.78
5143-479-16R-075	PSC63 - MVLNR - 45075 - 16	113	75	45	31	VN..1604	0.80
5143-479-16L-075	PSC63 - MVLNL - 45075 - 16	113	75	45	31	VN..1604	0.80

### Features:

- ▶ Ideal for CNC lathes and millturn machines.
- ▶ The polygonal taper is based on ISO26623-1 with superior torque transmission, bending strength and repeated positional precision.

### Product information:

- ▶ Inserts are optional accessories. Need to be purchased additionally.

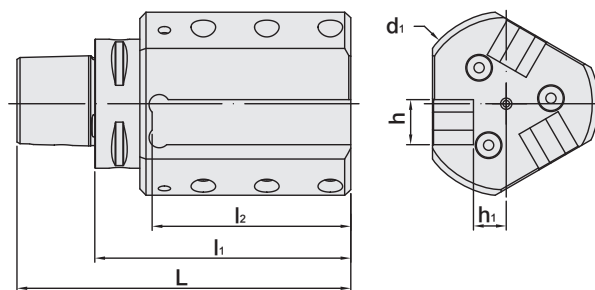
### Accessory:

Insert	Clamp	Shim	Screw	Screw
				
VN..1604	MC622	SMV322	MS630	MLP34L-A



# PSC / SV EXTERNAL TURNING TOOL HOLDER

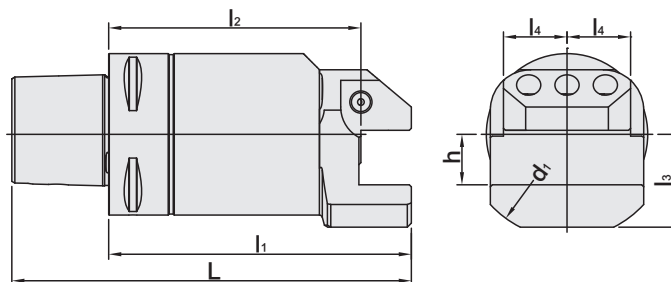
## PSC / SV 外徑車刀架



MODEL NO.	TYPE	L	l <sub>1</sub>	l <sub>2</sub>	d <sub>1</sub>	h	h <sub>1</sub>	WEIGHT (KGS)
5142-S47-20R-123	PSC50 x SV20R - 123	153	123	97	90	20	16	3.56
5142-S47-20L-123	PSC50 x SV20L - 123	153	123	97	90	20	16	3.56
5143-S47-20R-125	PSC63 x SV20R - 125	163	125	97	90	20	16	3.58
5143-S47-20L-125	PSC63 x SV20L - 125	163	125	97	90	20	16	3.58
5144-S47-32R-150	PSC80 x SV32R - 150	198	150	114	120	32	20	7.13
5144-S47-32L-150	PSC80 x SV32L - 150	198	150	114	120	32	20	7.13

# PSC / SF EXTERNAL TURNING TOOL HOLDER

PSC / SF 外徑車刀架

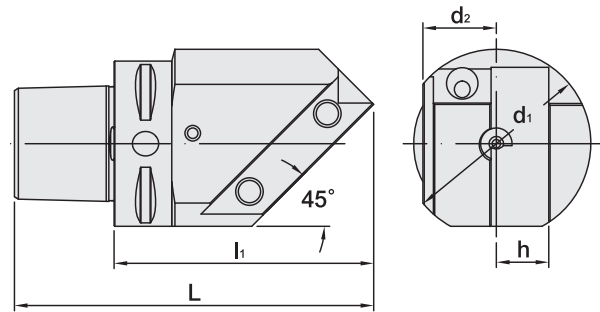


MODEL NO.	TYPE	L	l <sub>1</sub>	l <sub>2</sub>	l <sub>3</sub>	l <sub>4</sub>	h	d <sub>1</sub>	WEIGHT (KGS)
5141-S46-020-055	PSC40 x SF20 - 55	79	55	35	36	30	20	80	0.84
5142-S46-020-065	PSC50 x SF20 - 65	95	65	45	39	25.5	20	85	1.43
5143-S46-020-070	PSC63 x SF20 - 70	108	70	50	39	25.5	20	85	1.84
5143-S46-025-080	PSC63 x SF25 - 80	118	80	55	46	31.5	25	103	2.55
5143-S46-032-080	PSC63 x SF32 - 80	118	80	48	65	40	32	142	3.64
5144-S46-025-075	PSC80 x SF25 - 75	123	75	50	46	31.5	25	103	3.01
5144-S46-025-150	PSC80 x SF25 - 150	198	150	125	46	31.5	25	103	5.84
5144-S46-025-180	PSC80 x SF25 - 180	228	180	155	46	31.5	25	103	6.97
5144-S46-032-085	PSC80 x SF32 - 85	133	85	53	65	40	32	142	4.52
5145-S46-032-090	PSC80X x SF32 - 90	138	90	58	65	40	32	142	5.65
5146-S46-032-090	PSC100 x SF32 - 90	150	90	58	65	40	32	145	6.45

# PSC / SN EXTERNAL TURNING TOOL HOLDER

## PSC / SN 外徑車刀架

  
 台灣精品 2012  
 TAIWAN EXCELLENCE



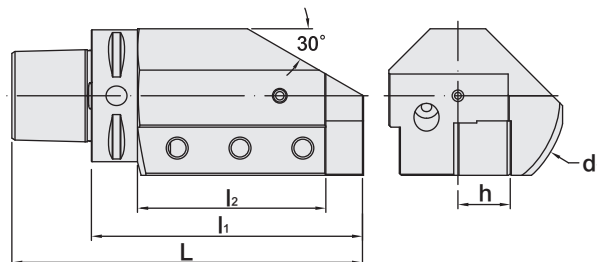
MODEL NO.	TYPE	L	l <sub>1</sub>	d <sub>1</sub>	d <sub>2</sub>	h	WEIGHT (KGS)
5142-766-20R-097	PSC50 x SN20R - 97	127	97	72	31.5	20	1.66
5142-766-20L-097	PSC50 x SN20L - 97	127	97	72	31.5	20	1.66
5143-766-20R-099	PSC63 x SN20R - 99	137	99	72	31.5	20	2.10
5143-766-20L-099	PSC63 x SN20L - 99	137	99	72	31.5	20	2.10
5144-766-32R-135	PSC80 x SN32R - 135	183	135	140	45	32	6.51
5144-766-32L-135	PSC80 x SN32L - 135	183	135	140	45	32	6.51

# PSC / S EXTERNAL TURNING TOOL HOLDER

PSC / S 外徑車刀架



台灣精品 2012  
TAIWAN EXCELLENCE

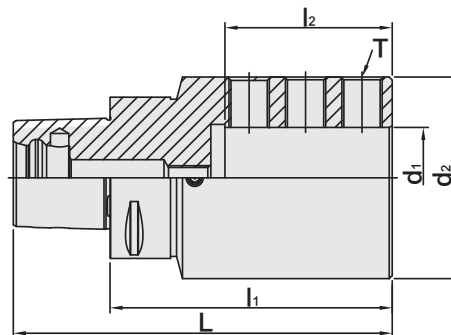


MODEL NO.	TYPE	L	l <sub>1</sub>	l <sub>2</sub>	d <sub>1</sub>	h	WEIGHT (KGS)
5142-776-20R-098	PSC50 x S20R - 98	128	98	68	90	20	2.22
5142-776-20L-098	PSC50 x S20L - 98	128	98	68	90	20	2.11
5143-776-20R-100	PSC63 x S20R - 100	138	100	75	90	20	2.34
5143-776-20L-100	PSC63 x S20L - 100	138	100	75	90	20	2.34
5143-776-25R-130	PSC63 x S25R - 130	168	130	102	103.5	25	3.93
5143-776-25L-130	PSC63 x S25L - 130	168	130	102	103.5	25	3.93
5144-776-25R-140	PSC80 x S25R - 140	188	140	92	105	25	4.41
5144-776-25L-140	PSC80 x S25L - 140	188	140	92	105	25	4.41
5144-776-32R-140	PSC80 x S32R - 140	188	140	130	110	32	5.05
5144-776-32L-140	PSC80 x S32L - 140	188	140	130	110	32	5.05
5145-776-32R-143	PSC80X x S32R - 143	191	143	133	145	32	7.75
5145-776-32L-143	PSC80X x S32L - 143	191	143	133	145	32	7.75
5146-776-32R-150	PSC100 x S32R - 150	210	150	95	145	32	8.86
5146-776-32L-150	PSC100 x S32L - 150	210	150	95	145	32	8.86

# PSC / SLT SIDE LOCK HOLDER FOR INTERNAL TURNING BAR

PSC

PSC / SLT 側固式刀桿 [用於內徑車刀]



MODEL NO.	TYPE	L	l <sub>1</sub>	l <sub>2</sub>	d <sub>1</sub>	d <sub>2</sub>	T	WEIGHT (KGS)
5142-797-025-100	PSC50 x SLT25 - 100	130	100	60	25	56	M12	1.61
5143-797-025-098	PSC63 x SLT25 - 98	136	98	60	25	56	M12	1.81
5143-797-032-110	PSC63 x SLT32 - 110	148	110	75	32	64	M12	2.35
5143-797-040-112	PSC63 x SLT40 - 112	150	112	83	40	90	M20	3.45
5144-797-025-098	PSC80 x SLT25 - 98	146	98	60	25	56	M12	2.71
5144-797-032-120	PSC80 x SLT32 - 120	168	120	75	32	64	M12	3.31
5144-797-040-140	PSC80 x SLT40 - 140	188	140	83	40	90	M20	6.00
5144-797-050-140	PSC80 x SLT50 - 140	188	140	83	50	100	M20	6.71

## Accessories

### Lock Screw

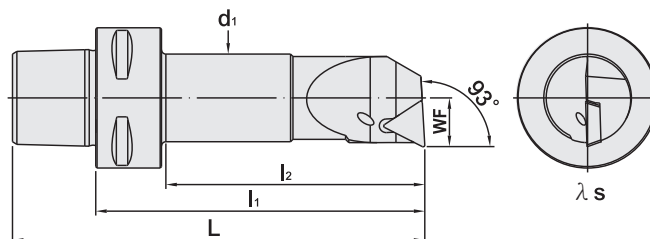


P.W-109



# PSC / STUP INTERNAL BORING BAR

## PSC / STUP 内徑車刀



MODEL NO.	TYPE	L	l <sub>1</sub>	l <sub>2</sub>	d <sub>1</sub>	WF	λ s	INSERT	WEIGHT (KGS)
5140-761-11R-065	PSC32 - STUPR - 09065 - 11	84	65	48	16	09	-4°	TP..1103	0.27
5140-761-11L-065	PSC32 - STUPL - 09065 - 11	84	65	48	16	09	-4°	TP..1103	0.27
5140-761-11R-075	PSC32 - STUPR - 11075 - 11	94	75	59	20	11	-2°	TP..1103	0.35
5140-761-11L-075	PSC32 - STUPL - 11075 - 11	94	75	59	20	11	-2°	TP..1103	0.35
5140-761-16R-090	PSC32 - STUPR - 14090 - 16	109	90	74	25	14	-3°	TP..1603	0.50
5140-761-16L-090	PSC32 - STUPL - 14090 - 16	109	90	74	25	14	-3°	TP..1603	0.50
5141-761-11R-070	PSC40 - STUPR - 09070 - 11	94	70	47	16	09	-4°	TP..1103	0.34
5141-761-11L-070	PSC40 - STUPL - 09070 - 11	94	70	47	16	09	-4°	TP..1103	0.34
5141-761-11R-080	PSC40 - STUPR - 11080 - 11	104	80	57	20	11	-2°	TP..1103	0.42
5141-761-11L-080	PSC40 - STUPL - 11080 - 11	104	80	57	20	11	-2°	TP..1103	0.42
5141-761-16R-090	PSC40 - STUPR - 14090 - 16	114	90	69	25	14	-3°	TP..1603	0.55
5141-761-16L-090	PSC40 - STUPL - 14090 - 16	114	90	69	25	14	-3°	TP..1603	0.55
5141-761-16R-110	PSC40 - STUPR - 20110 - 16	134	110	89	32	20	-2°	TP..1604	0.87
5141-761-16L-110	PSC40 - STUPL - 20110 - 16	134	110	89	32	20	-2°	TP..1604	0.87



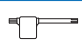
### Features:

- ▶ Ideal for CNC lathes and millturn machines.
- ▶ The polygonal taper is based on ISO26623-1 with superior torque transmission, bending strength and repeated positional precision.

### Product information:

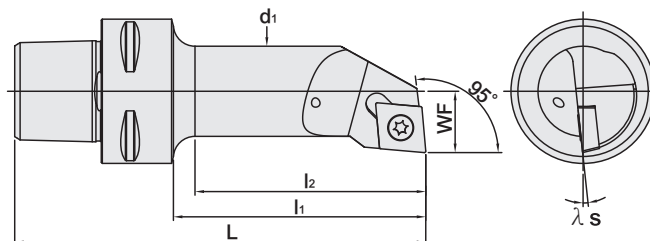
- ▶ Inserts are optional accessories. Need to be purchased additionally.

### ACCESSORIES

Insert	Screw	Wrench
		
TP..1103	M3-8.0-4.0-46	T9
TP..1603	M4-10-5.0-43	T15
TP..1604	M4-10-5.0-43	T15

# PSC / SCLC INTERNAL BORING BAR

## PSC / SCLC 內徑車刀



MODEL NO.	TYPE	L	l <sub>1</sub>	l <sub>2</sub>	d <sub>1</sub>	WF	λ s	INSERT	WEIGHT (KGS)
5140-778-09R-065	PSC32 - SCLCR - 11065 - 09	84	65	48	16	11	-12°	CC..09T3	0.3
5140-778-09L-065	PSC32 - SCLCL - 11065 - 09	84	65	48	16	11	-12°	CC..09T3	0.3
5140-778-09R-075	PSC32 - SCLCR - 13075 - 09	94	75	59	20	13	-8°	CC..09T3	0.3
5140-778-09L-075	PSC32 - SCLCL - 13075 - 09	94	75	59	20	13	-8°	CC..09T3	0.3
5140-778-09R-090	PSC32 - SCLCR - 17090 - 09	109	90	75	25	17	-6°	CC..09T3	0.3
5140-778-09L-090	PSC32 - SCLCL - 17090 - 09	109	90	75	25	17	-6°	CC..09T3	0.3
5140-778-12R-090	PSC32 - SCLCR - 17090 - 12	109	90	75	25	17	-6°	CC..1204	0.3
5140-778-12L-090	PSC32 - SCLCL - 17090 - 12	109	90	75	25	17	-6°	CC..1204	0.3
5140-778-12R-064	PSC32 - SCLCR - 22064 - 12	83	64	50	32	22	-10°	CC..1204	0.3
5140-778-12L-064	PSC32 - SCLCL - 22064 - 12	83	64	50	32	22	-10°	CC..1204	0.3
5140-778-12R-096	PSC32 - SCLCR - 22096 - 12	115	96	82	32	22	-10°	CC..1204	0.3
5140-778-12L-096	PSC32 - SCLCL - 22096 - 12	115	96	82	32	22	-10°	CC..1204	0.3
5141-778-09R-070	PSC40 - SCLCR - 11070 - 09	94	70	47	16	11	-12°	CC..09T3	0.5
5141-778-09L-070	PSC40 - SCLCL - 11070 - 09	94	70	47	16	11	-12°	CC..09T3	0.5
5141-778-09R-080	PSC40 - SCLCR - 13080 - 09	104	80	58	20	13	-8°	CC..09T3	0.5
5141-778-09L-080	PSC40 - SCLCL - 13080 - 09	104	80	58	20	13	-8°	CC..09T3	0.5
5141-778-09R-090	PSC40 - SCLCR - 17090 - 09	114	90	69	25	17	-6°	CC..09T3	0.5
5141-778-09L-090	PSC40 - SCLCL - 17090 - 09	114	90	69	25	17	-6°	CC..09T3	0.5
5141-778-09R-080	PSC40 - SCLCR - 27080 - 09	104	80	60	40	27	-6°	CC..09T3	0.5
5141-778-09L-080	PSC40 - SCLCL - 27080 - 09	104	80	60	40	27	-6°	CC..09T3	0.5
5141-778-12R-090	PSC40 - SCLCR - 17090 - 12	114	90	69	25	17	-6°	CC..1204	0.5
5141-778-12L-090	PSC40 - SCLCL - 17090 - 12	114	90	69	25	17	-6°	CC..1204	0.5
5141-778-12R-110	PSC40 - SCLCR - 22110 - 12	134	110	89	32	22	-10°	CC..1204	0.5
5141-778-12L-110	PSC40 - SCLCL - 22110 - 12	134	110	89	32	22	-10°	CC..1204	0.5
5141-778-12R-080	PSC40 - SCLCR - 27080 - 12	104	80	60	40	27	-8°	CC..1204	0.5
5141-778-12L-080	PSC40 - SCLCL - 27080 - 12	104	80	60	40	27	-8°	CC..1204	0.5



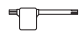
### Features:

- ▶ Ideal for CNC lathes and millturn machines.
- ▶ The polygonal taper is based on ISO26623-1 with superior torque transmission, bending strength and repeated positional precision.

### Product information:

- ▶ Inserts are optional accessories. Need to be purchased additionally.

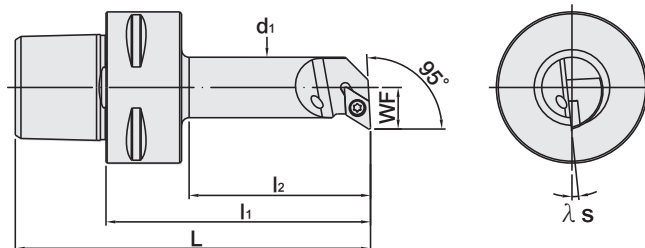
### ACCESSORIES

Insert	Screw	Wrench
 CC..09T3	 M4-10-5.7-60	 T15
CC..1204	M5-11-7.5-60	T20



# PSC / SDUC INTERNAL BORING BAR

## PSC / SDUC 内徑車刀



MODEL NO.	TYPE	L	l <sub>1</sub>	l <sub>2</sub>	d <sub>1</sub>	WF	λ <sub>s</sub>	INSERT	WEIGHT (KGS)
5140-765-07R-065	PSC32 - SDUCR - 11065 - 07	84	65	48	16	11	-6°	DC..0702	0.3
5140-765-07L-065	PSC32 - SDUCL - 11065 - 07	84	65	48	16	11	-6°	DC..0702	0.3
5140-765-11R-075	PSC32 - SDUCR - 13075 - 11	94	75	58	20	13	-6°	DC..11T3	0.3
5140-765-11L-075	PSC32 - SDUCL - 13075 - 11	94	75	58	20	13	-6°	DC..11T3	0.3
5140-765-11R-090	PSC32 - SDUCR - 17090 - 11	109	90	73	25	17	-6°	DC..11T3	0.3
5140-765-11L-090	PSC32 - SDUCL - 17090 - 11	109	90	73	25	17	-6°	DC..11T3	0.3
5140-765-11R-096	PSC32 - SDUCR - 22096 - 11	115	96	81	32	22	-6°	DC..11T3	0.3
5140-765-11L-096	PSC32 - SDUCL - 22096 - 11	115	96	81	32	22	-6°	DC..11T3	0.3
5141-765-07R-070	PSC40 - SDUCR - 11070 - 07	94	70	47	16	11	-6°	DC..0702	0.5
5141-765-07L-070	PSC40 - SDUCL - 11070 - 07	94	70	47	16	11	-6°	DC..0702	0.5
5141-765-11R-080	PSC40 - SDUCR - 13080 - 11	104	80	57	20	13	-6°	DC..11T3	0.5
5141-765-11L-080	PSC40 - SDUCL - 13080 - 11	104	80	57	20	13	-6°	DC..11T3	0.5
5141-765-11R-090	PSC40 - SDUCR - 17090 - 11	114	90	68	25	17	-6°	DC..11T3	0.5
5141-765-11L-090	PSC40 - SDUCL - 17090 - 11	114	90	68	25	17	-6°	DC..11T3	0.5
5141-765-11R-110	PSC40 - SDUCR - 22110 - 11	134	110	89	32	22	-6°	DC..11T3	0.5
5141-765-11L-110	PSC40 - SDUCL - 22110 - 11	134	110	89	32	22	-6°	DC..11T3	0.5
5141-765-11R-080	PSC40 - SDUCR - 27080 - 11	104	80	60	40	27	-6°	DC..11T3	0.5
5141-765-11L-080	PSC40 - SDUCL - 27080 - 11	104	80	60	40	27	-6°	DC..11T3	0.5




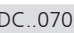


### Features:

- ▶ Ideal for CNC lathes and millturn machines.
- ▶ The polygonal taper is based on ISO26623-1 with superior torque transmission, bending strength and repeated positional precision.

### Product information:

- ▶ Inserts are optional accessories. Need to be purchased additionally.

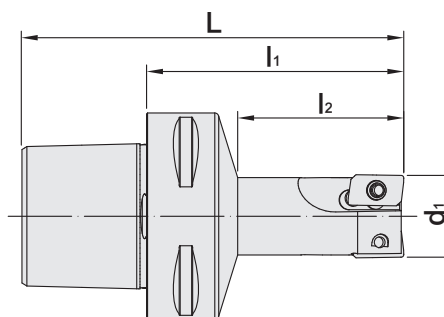
### ACCESSORIES

Insert	Screw	Wrench
 DC..0702	 M2.5-6.0-3.5-60	 T8
 DC..11T3	 M4-10-5.7-60	 T15



# PSC / IAP INDEXABLE END MILL CUTTER

## PSC / IAP 直角高速銑刀


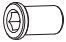



MODEL NO.	TYPE	L	l <sub>1</sub>	l <sub>2</sub>	d <sub>1</sub>	TEETH	INSERT	WEIGHT (KGS)
5140-244-016-050	PSC32 x IAP16 - 50 - 2T	69	50	25	16	2	AP..1003	0.20
5140-244-020-050	PSC32 x IAP20 - 50 - 2T	69	50	25	20	2	AP..1003	0.20
5140-245-020-050	PSC32 x IAP20 - 50 - 3T	69	50	25	20	3	AP..1003	0.30
5140-244-025-050	PSC32 x IAP25 - 50 - 2T	69	50	32	25	2	AP..1003	0.20
5140-245-025-050	PSC32 x IAP25 - 50 - 3T	69	50	32	25	3	AP..1003	0.30
5140-245-032-050	PSC32 x IAP32 - 50 - 3T	69	50	35	32	3	AP..1003	0.20
5141-244-016-050	PSC40 x IAP16 - 50 - 2T	74	50	25	16	2	AP..1003	0.50
5141-244-020-050	PSC40 x IAP20 - 50 - 2T	74	50	25	20	2	AP..1003	0.50
5141-244-025-055	PSC40 x IAP25 - 55 - 2T	79	55	32	25	2	AP..1003	0.50
5141-245-025-055	PSC40 x IAP25 - 55 - 3T	79	55	32	25	3	AP..1003	0.50
5141-245-032-065	PSC40 x IAP32 - 65 - 3T	89	65	40	32	3	AP..1003	0.60
5142-245-020-095	PSC50 x IAP20 - 95 - 3T	125	95	40	20	3	AP..1003	1.00
5142-245-025-095	PSC50 x IAP25 - 95 - 3T	125	95	45	25	3	AP..1003	1.10
5142-245-032-065	PSC50 x IAP32 - 65 - 3T	95	65	40	32	3	AP..1003	1.50
5142-245-040-080	PSC50 x IAP40 - 80 - 3T	110	80	40	40	3	AP..1604	1.10
5142-247-050-060	PSC50 x IAP50 - 60 - 5T	90	60	60	50	5	AP..1604	1.00
5142-247-063-060	PSC50 x IAP63 - 60 - 5T	90	60	60	63	5	AP..1604	1.40
5143-245-020-110	PSC63 x IAP20 - 110 - 3T	148	110	40	20	3	AP..1003	1.60
5143-244-020-165	PSC63 x IAP20 - 165 - 2T	203	165	60	20	2	AP..1003	1.60
5143-245-025-110	PSC63 x IAP25 - 110 - 3T	148	110	45	25	3	AP..1003	1.60
5143-245-032-080	PSC63 x IAP32 - 80 - 3T	118	80	40	32	3	AP..1003	1.50
5143-245-032-110	PSC63 x IAP32 - 110 - 3T	148	110	50	32	3	AP..1003	1.70
5143-246-040-080	PSC63 x IAP40 - 80 - 4T	118	80	40	40	4	AP..1003	1.60
5143-247-040-080	PSC63 x IAP40 - 80 - 5T	118	80	40	40	5	AP..1003	1.60
5143-245-040-100	PSC63 x IAP40 - 100 - 3T	138	100	50	40	3	AP..1604	1.80
5143-246-050-080	PSC63 x IAP50 - 80 - 4T	118	80	40	50	4	AP..1604	1.80
5143-247-063-060	PSC63 x IAP63 - 60 - 5T	98	60	38	63	5	AP..1604	2.20
5143-247-066-060	PSC63 x IAP66 - 60 - 5T	98	60	60	66	5	AP..1604	1.90
5143-247-066-080	PSC63 x IAP66 - 80 - 5T	118	80	80	66	5	AP..1604	2.30
5143-248-080-060	PSC63 x IAP80 - 60 - 6T	98	60	60	80	6	AP..1604	2.20

### Product information:

- ▶ One-piece design improves rigidity.
- ▶ Stable insert seat and excellent metal chips removal capacity.
- ▶ Inserts are optional accessories. Needs to be purchased additionally.

### ACCESSORIES

Insert	Screw	Wrench
 AP..1003	 M2.5-6.45-3.7-60	 T8
AP..1604	M4-10-5.7-60	T15

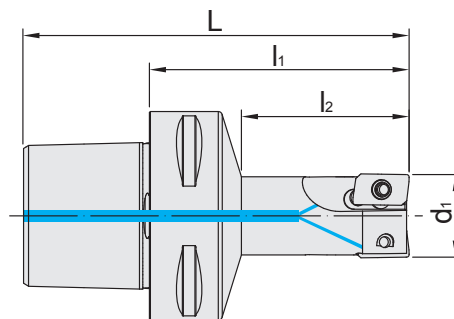


# PSC / CIAP INDEXABLE END MILL CUTTER

## PSC / CIAP 直角高速銑刀



台灣精品 2012  
TAIWAN EXCELLENCE



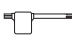


MODEL NO.	TYPE	L	l <sub>1</sub>	l <sub>2</sub>	d <sub>1</sub>	TEETH	INSERT	WEIGHT (KGS)
5140-052-016-050	PSC32 x CIAP16 - 50 - 2T	69	50	25	16	2	AP..1003	0.20
5140-052-020-050	PSC32 x CIAP20 - 50 - 2T	69	50	25	20	2	AP..1003	0.20
5140-053-020-050	PSC32 x CIAP20 - 50 - 3T	69	50	25	20	3	AP..1003	0.30
5140-052-025-050	PSC32 x CIAP25 - 50 - 2T	69	50	32	25	2	AP..1003	0.20
5140-053-025-050	PSC32 x CIAP25 - 50 - 3T	69	50	32	25	3	AP..1003	0.30
5140-053-032-050	PSC32 x CIAP32 - 50 - 3T	69	50	35	32	3	AP..1003	0.20
5141-052-016-050	PSC40 x CIAP16 - 50 - 2T	74	50	25	16	2	AP..1003	0.50
5141-052-020-050	PSC40 x CIAP20 - 50 - 2T	74	50	25	20	2	AP..1003	0.50
5141-052-025-055	PSC40 x CIAP25 - 55 - 2T	79	55	32	25	2	AP..1003	0.50
5141-053-025-055	PSC40 x CIAP25 - 55 - 3T	79	55	32	25	3	AP..1003	0.50
5141-053-032-065	PSC40 x CIAP32 - 65 - 3T	89	65	40	32	3	AP..1003	0.60
5142-053-020-095	PSC50 x CIAP20 - 95 - 3T	125	95	40	20	3	AP..1003	1.00
5142-053-025-095	PSC50 x CIAP25 - 95 - 3T	125	95	45	25	3	AP..1003	1.10
5142-053-032-065	PSC50 x CIAP32 - 65 - 3T	95	65	40	32	3	AP..1003	1.50
5142-053-040-080	PSC50 x CIAP40 - 80 - 3T	110	80	40	40	3	AP..1604	1.10
5142-055-050-060	PSC50 x CIAP50 - 60 - 5T	90	60	60	50	5	AP..1604	1.00
5142-055-063-060	PSC50 x CIAP63 - 60 - 5T	90	60	60	63	5	AP..1604	1.40
5143-053-020-110	PSC63 x CIAP20 - 110 - 3T	148	110	40	20	3	AP..1003	1.60
5143-052-020-165	PSC63 x CIAP20 - 165 - 2T	203	165	60	20	2	AP..1003	1.60
5143-053-025-110	PSC63 x CIAP25 - 110 - 3T	148	110	45	25	3	AP..1003	1.60
5143-053-032-080	PSC63 x CIAP32 - 80 - 3T	118	80	40	32	3	AP..1003	1.50
5143-053-032-110	PSC63 x CIAP32 - 110 - 3T	148	110	50	32	3	AP..1003	1.70
5143-054-040-080	PSC63 x CIAP40 - 80 - 4T	118	80	40	40	4	AP..1003	1.60
5143-055-040-080	PSC63 x CIAP40 - 80 - 5T	118	80	40	40	5	AP..1003	1.60
5143-053-040-100	PSC63 x CIAP40 - 100 - 3T	138	100	50	40	3	AP..1604	1.80
5143-054-050-080	PSC63 x CIAP50 - 80 - 4T	118	80	40	50	4	AP..1604	1.80
5143-055-063-060	PSC63 x CIAP63 - 60 - 5T	98	60	38	63	5	AP..1604	2.20
5143-055-066-060	PSC63 x CIAP66 - 60 - 5T	98	60	60	66	5	AP..1604	1.90
5143-055-066-080	PSC63 x CIAP66 - 80 - 5T	118	80	80	66	5	AP..1604	2.30
5143-056-080-060	PSC63 x CIAP80 - 60 - 6T	98	60	60	80	6	AP..1604	2.20

### Product information:

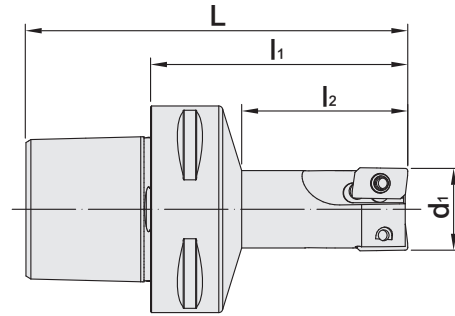
- ▶ One-piece design improves rigidity.
- ▶ Stable insert seat and excellent metal chips removal capacity.
- ▶ Inserts are optional accessories. Needs to be purchased additionally.

### ACCESSORIES

Insert	Screw	Wrench
 AP..1003 AP..1604	 M2.5-6.45-3.7-60 M4-10-5.7-60	 T8 T15

# PSC / MAP INDEXABLE END MILL CUTTER

## PSC / MAP 直角高速銑刀






MODEL NO.	TYPE	L	l <sub>1</sub>	l <sub>2</sub>	d <sub>1</sub>	TEETH	INSERT	WEIGHT (KGS)
5140-468-016-050	PSC32 x MAP16 - 50 - 2T	69	50	25	16	2	AP.1135	0.20
5140-468-020-050	PSC32 x MAP20 - 50 - 2T	69	50	25	20	2	AP.1135	0.20
5140-469-020-050	PSC32 x MAP20 - 50 - 3T	69	50	25	20	3	AP.1135	0.30
5140-468-025-050	PSC32 x MAP25 - 50 - 2T	69	50	32	25	2	AP.1604	0.20
5140-469-025-050	PSC32 x MAP25 - 50 - 3T	69	50	32	25	3	AP.1135	0.30
5140-468-032-050	PSC32 x MAP32 - 50 - 2T	69	50	35	32	2	AP.1604	0.20
5141-468-016-050	PSC40 x MAP16 - 50 - 2T	74	50	25	16	2	AP.1135	0.50
5141-468-020-050	PSC40 x MAP20 - 50 - 2T	74	50	25	20	2	AP.1135	0.50
5141-468-025-055	PSC40 x MAP25 - 55 - 2T	79	55	32	25	2	AP.1604	0.50
5141-469-025-055	PSC40 x MAP25 - 55 - 3T	79	55	32	25	3	AP.1135	0.50
5141-468-032-065	PSC40 x MAP32 - 65 - 2T	89	65	40	32	2	AP.1604	0.60
5142-469-020-095	PSC50 x MAP20 - 95 - 3T	125	95	40	20	3	AP.1135	1.00
5142-469-025-095	PSC50 x MAP25 - 95 - 3T	125	95	45	25	3	AP.1135	1.10
5142-468-032-065	PSC50 x MAP32 - 65 - 2T	95	65	40	32	2	AP.1604	1.50
5142-472-050-060	PSC50 x MAP50 - 60 - 5T	90	60	60	50	5	AP.1604	1.00
5142-472-063-060	PSC50 x MAP63 - 60 - 5T	90	60	60	63	5	AP.1604	1.40
5143-469-020-110	PSC63 x MAP20 - 110 - 3T	148	110	40	20	3	AP.1135	1.60
5143-468-020-165	PSC63 x MAP20 - 165 - 2T	203	165	60	20	2	AP.1135	1.60
5143-469-025-110	PSC63 x MAP25 - 110 - 3T	148	110	45	25	3	AP.1135	1.60
5143-469-032-080	PSC63 x MAP32 - 80 - 3T	118	80	40	32	3	AP.1135	1.50
5143-469-032-110	PSC63 x MAP32 - 110 - 3T	148	110	50	32	3	AP.1135	1.70
5143-471-040-080	PSC63 x MAP40 - 80 - 4T	118	80	40	40	4	AP.1135	1.60
5143-472-040-080	PSC63 x MAP40 - 80 - 5T	118	80	40	40	5	AP.1135	1.60
5143-469-040-100	PSC63 x MAP40 - 100 - 3T	138	100	50	40	3	AP.1604	1.80
5143-471-050-080	PSC63 x MAP50 - 80 - 4T	118	80	40	50	4	AP.1604	1.80
5143-472-063-060	PSC63 x MAP63 - 60 - 5T	98	60	38	63	5	AP.1604	2.20
5143-472-066-060	PSC63 x MAP66 - 60 - 5T	98	60	60	66	5	AP.1604	1.90
5143-472-066-080	PSC63 x MAP66 - 80 - 5T	118	80	80	66	5	AP.1604	2.30
5143-493-080-060	PSC63 x MAP80 - 60 - 6T	98	60	60	80	6	AP.1604	2.20

### Product information:

- ▶ One-piece design improves rigidity.
- ▶ Stable insert seat and excellent metal chips removal capacity.
- ▶ Inserts are optional accessories. Needs to be purchased additionally.

### ACCESSORIES

Insert	Screw	Wrench
 AP.1135	 M2.5-6.0-3.5-60	 T8
AP.1604	M4-10-5.7-60	T15

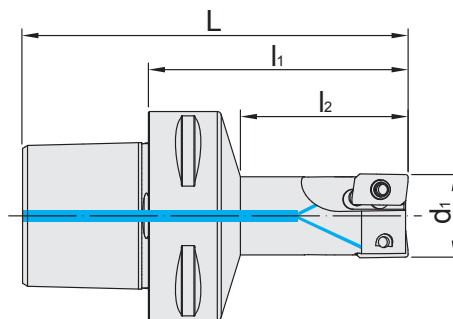


# PSC / CMAP INDEXABLE END MILL CUTTER

## PSC / CMAP 直角高速銑刀



台灣精品 2012  
TAIWAN EXCELLENCE


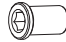
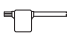


MODEL NO.	TYPE	L	l <sub>1</sub>	l <sub>2</sub>	d <sub>1</sub>	TEETH	INSERT	WEIGHT (KGS)
5140-042-016-050	PSC32 x CMAP16 - 50 - 2T	69	50	25	16	2	AP..1135	0.20
5140-042-020-050	PSC32 x CMAP20 - 50 - 2T	69	50	25	20	2	AP..1135	0.20
5140-043-020-050	PSC32 x CMAP20 - 50 - 3T	69	50	25	20	3	AP..1135	0.30
5140-042-025-050	PSC32 x CMAP25 - 50 - 2T	69	50	32	25	2	AP..1604	0.20
5140-043-025-050	PSC32 x CMAP25 - 50 - 3T	69	50	32	25	3	AP..1135	0.30
5140-042-032-050	PSC32 x CMAP32 - 50 - 2T	69	50	35	32	2	AP..1604	0.20
5141-042-016-050	PSC40 x CMAP16 - 50 - 2T	74	50	25	16	2	AP..1135	0.50
5141-042-020-050	PSC40 x CMAP20 - 50 - 2T	74	50	25	20	2	AP..1135	0.50
5141-042-025-055	PSC40 x CMAP25 - 55 - 2T	79	55	32	25	2	AP..1604	0.50
5141-043-025-055	PSC40 x CMAP25 - 55 - 3T	79	55	32	25	3	AP..1135	0.50
5141-042-032-065	PSC40 x CMAP32 - 65 - 2T	89	65	40	32	2	AP..1604	0.60
5142-043-020-095	PSC50 x CMAP20 - 95 - 3T	125	95	40	20	3	AP..1135	1.00
5142-043-025-095	PSC50 x CMAP25 - 95 - 3T	125	95	45	25	3	AP..1135	1.10
5142-042-032-065	PSC50 x CMAP32 - 65 - 2T	95	65	40	32	2	AP..1604	1.50
5142-045-050-060	PSC50 x CMAP50 - 60 - 5T	90	60	60	50	5	AP..1604	1.00
5142-045-063-060	PSC50 x CMAP63 - 60 - 5T	90	60	60	63	5	AP..1604	1.40
5143-043-020-110	PSC63 x CMAP20 - 110 - 3T	148	110	40	20	3	AP..1135	1.60
5143-042-020-165	PSC63 x CMAP20 - 165 - 2T	203	165	60	20	2	AP..1135	1.60
5143-043-025-110	PSC63 x CMAP25 - 110 - 3T	148	110	45	25	3	AP..1135	1.60
5143-043-032-080	PSC63 x CMAP32 - 80 - 3T	118	80	40	32	3	AP..1135	1.50
5143-043-032-110	PSC63 x CMAP32 - 110 - 3T	148	110	50	32	3	AP..1135	1.70
5143-044-040-080	PSC63 x CMAP40 - 80 - 4T	118	80	40	40	4	AP..1135	1.60
5143-045-040-080	PSC63 x CMAP40 - 80 - 5T	118	80	40	40	5	AP..1135	1.60
5143-043-040-100	PSC63 x CMAP40 - 100 - 3T	138	100	50	40	3	AP..1604	1.80
5143-044-050-080	PSC63 x CMAP50 - 80 - 4T	118	80	40	50	4	AP..1604	1.80
5143-045-063-060	PSC63 x CMAP63 - 60 - 5T	98	60	38	63	5	AP..1604	2.20
5143-045-066-060	PSC63 x CMAP66 - 60 - 5T	98	60	60	66	5	AP..1604	1.90
5143-045-066-080	PSC63 x CMAP66 - 80 - 5T	118	80	80	66	5	AP..1604	2.30
5143-046-080-060	PSC63 x CMAP80 - 60 - 6T	98	60	60	80	6	AP..1604	2.20

### Product information:

- ▶ One-piece design improves rigidity.
- ▶ Stable insert seat and excellent metal chips removal capacity.
- ▶ Inserts are optional accessories. Needs to be purchased additionally.

### ACCESSORIES

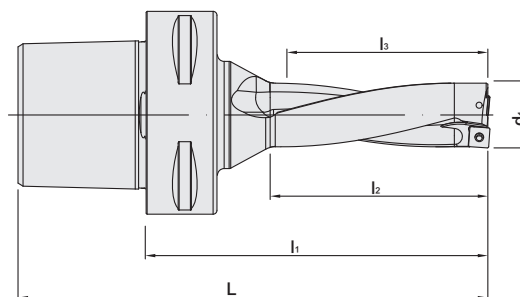
Insert	Screw	Wrench
 AP..1135	 M2.5-6.0-3.5-60	 T8
AP..1604	M4-10-5.7-60	T15

# PSC / SPD HIGH SPEED DRILL

## ONE-PIECE TYPE

3D

PSC / SPD 一體式快速鑽頭



MODEL NO.	TYPE	L	l <sub>1</sub>	l <sub>2</sub>	l <sub>3</sub>	d <sub>1</sub>	INSERT	WEIGHT (KGS)
5141-685-015-045	PSC40 x SPD15 - 3D - 45	82	70	50	45	15	SP..0502	0.30
5141-685-016-048	PSC40 x SPD16 - 3D - 48	86	74	53	48	16	SP..0602	0.40
5141-685-017-051	PSC40 x SPD17 - 3D - 51	89	77	56	51	17	SP..0602	0.42
5141-685-018-054	PSC40 x SPD18 - 3D - 54	93	81	59	54	18	SP..0602	0.44
5141-685-019-057	PSC40 x SPD19 - 3D - 57	96	84	62	57	19	SP..0602	0.45
5141-685-020-060	PSC40 x SPD20 - 3D - 60	101	89	65	60	20	SP..0602	0.47
5141-685-021-063	PSC40 x SPD21 - 3D - 63	104	92	68	63	21	SP..0602	0.48
5141-685-022-066	PSC40 x SPD22 - 3D - 66	107	95	71	66	22	SP..07T3	0.49
5141-685-023-069	PSC40 x SPD23 - 3D - 69	111	99	74	69	23	SP..07T3	0.66
5141-685-024-072	PSC40 x SPD24 - 3D - 72	115	103	77	72	24	SP..07T3	0.67
5141-685-025-075	PSC40 x SPD25 - 3D - 75	119	107	80	75	25	SP..07T3	0.72
5141-685-026-078	PSC40 x SPD26 - 3D - 78	122	110	83	78	26	SP..07T3	0.73
5141-685-027-081	PSC40 x SPD27 - 3D - 81	125	113	86	81	27	SP..07T3	0.75
5141-685-028-084	PSC40 x SPD28 - 3D - 84	129	117	89	84	28	SP..0904	0.78
5141-685-029-087	PSC40 x SPD29 - 3D - 87	132	120	92	87	29	SP..0904	0.81
5141-685-030-090	PSC40 x SPD30 - 3D - 90	135	123	95	90	30	SP..0904	0.83

### INCHES

MODEL NO.	TYPE	L	l <sub>1</sub>	l <sub>2</sub>	l <sub>3</sub>	d <sub>1</sub>	INSERT	WEIGHT (KGS)
5141-685-016-047	PSC40 x SPD15.5 - 3D - 47	96	84	52	47	15.5	SP..0602	0.28
5141-685-017-050	PSC40 x SPD16.5 - 3D - 50	100	88	55	50	16.5	SP..0602	0.31
5141-685-018-053	PSC40 x SPD17.5 - 3D - 53	104	92	58	53	17.5	SP..0602	0.42
5141-685-019-056	PSC40 x SPD18.5 - 3D - 56	107	95	61	56	18.5	SP..0602	0.43
5141-685-A52-244	PSC40 x SPD20.62 - 3D - 62	115	103	67	62	20.62	SP..0602	0.43
5141-685-A56-264	PSC40 x SPD22.23 - 3D - 67	120	108	72	67	22.23	SP..07T3	0.45
5141-685-A64-303	PSC40 x SPD25.4 - 3D - 77	133	121	82	77	25.4	SP..07T3	0.48
5141-685-A68-339	PSC40 x SPD28.59 - 3D - 86	143	131	91	86	28.59	SP..0904	0.50


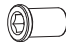
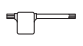
### Features:

- ▶ Drilling depth is three times longer than the diameter of the High Speed Drill.
- ▶ The material is anti-vibration tool steel.
- ▶ The whole body is treated with fine grinding after hardening in order to raise the rigidity and stability and prevent from deformation.

### Product information:

- ▶ Inserts are optional accessories. Needs to be purchased additionally.

### ACCESSORIES

Insert	Screw	Wrench
		
SP..0502	M2-4.3-2.7-60	T6
SP..0602	M2.2-5.2-3.1-60	T7
SP..07T3	M2.5-6.33-3.5-48	T8
SP..0904	M3.5-8.4-5.0-60	T10

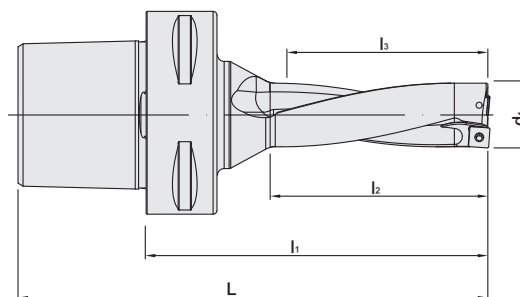


# PSC / SPD HIGH SPEED DRILL

## ONE-PIECE TYPE

4D

PSC / SPD 一體式快速鑽頭



MODEL NO.	TYPE	L	l <sub>1</sub>	l <sub>2</sub>	l <sub>3</sub>	d <sub>1</sub>	INSERT	WEIGHT (KGS)
5141-685-017-068	PSC40 x SPD17 - 4D - 68	118	106	73	68	17	SP..0602	0.45
5141-685-018-072	PSC40 x SPD18 - 4D - 72	123	111	77	72	18	SP..0602	0.47
5141-685-019-076	PSC40 x SPD19 - 4D - 76	127	115	81	76	19	SP..0602	0.48
5141-685-020-080	PSC40 x SPD20 - 4D - 80	133	121	85	80	20	SP..0602	0.50
5141-685-021-084	PSC40 x SPD21 - 4D - 84	137	125	89	84	21	SP..0602	0.51
5141-685-022-088	PSC40 x SPD22 - 4D - 88	141	129	93	88	22	SP..07T3	0.74
5141-685-023-092	PSC40 x SPD23 - 4D - 92	146	134	97	92	23	SP..07T3	0.56
5141-685-024-096	PSC40 x SPD24 - 4D - 96	151	139	101	96	24	SP..07T3	0.58
5141-685-025-100	PSC40 x SPD25 - 4D - 100	156	144	105	100	25	SP..07T3	0.61
5141-685-026-104	PSC40 x SPD26 - 4D - 104	160	148	109	104	26	SP..07T3	0.65
5141-685-027-108	PSC40 x SPD27 - 4D - 108	164	152	113	108	27	SP..07T3	0.69
5141-685-028-112	PSC40 x SPD28 - 4D - 112	169	157	117	112	28	SP..0904	0.73
5141-685-029-116	PSC40 x SPD29 - 4D - 116	173	161	121	116	29	SP..0904	0.75
5141-685-030-120	PSC40 x SPD30 - 4D - 120	177	165	125	120	30	SP..0904	0.81

### INCHES

MODEL NO.	TYPE	L	l <sub>1</sub>	l <sub>2</sub>	l <sub>3</sub>	d <sub>1</sub>	INSERT	WEIGHT (KGS)
5141-685-018-070	PSC40 x SPD17.5 - 4D - 70	121	109	75	70	17.5	SP..0602	0.47
5141-685-019-074	PSC40 x SPD18.5 - 4D - 74	125	113	79	74	18.5	SP..0602	0.49
5141-685-A52-327	PSC40 x SPD20.62 - 4D - 83	136	124	88	83	20.62	SP..0602	0.52
5141-685-A56-350	PSC40 x SPD22.23 - 4D - 89	142	130	94	89	22.23	SP..07T3	0.76
5141-685-A64-402	PSC40 x SPD25.4 - 4D - 102	158	146	107	102	25.4	SP..07T3	0.63
5141-685-A68-435	PSC40 x SPD28.59 - 4D - 115	172	160	120	115	28.59	SP..0904	0.75


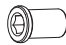
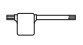
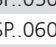
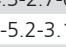

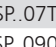
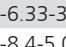

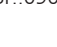


### Features:

- ▶ Drilling depth is four times longer than the diameter of the High Speed Drill.
- ▶ The material is anti-vibration tool steel.
- ▶ The whole body is treated with fine grinding after hardening in order to raise the rigidity and stability and prevent from deformation.

### Product information:

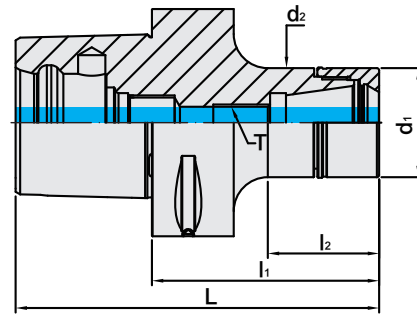
- ▶ Inserts are optional accessories. Needs to be purchased additionally.

### ACCESSORIES

Insert	Screw	Wrench
 SP.0502	 M2-4.3-2.7-60	 T6
 SP.0602	 M2.2-5.2-3.1-60	 T7
 SP.07T3	 M2.5-6.33-3.5-48	 T8
 SP.0904	 M3.5-8.4-5.0-60	 T10

# PSC / PRO-E COLLET CHUCK

## PSC / PRO-E 筒夾式刀桿



MODEL NO.	TYPE	L	l <sub>1</sub>	l <sub>2</sub>	d <sub>1</sub>	d <sub>2</sub>	-	SIZE RANGE	WEIGHT (KGS)
5133-529-016-070	PSC40-ID x PRO-E16 - 70	94	70	47	30	30	M10 x 1.5P	1 ~ 10	0.47
5133-529-016-100	PSC40-ID x PRO-E16 - 100	124	100	77	30	30	M10 x 1.5P	1 ~ 10	0.60
5133-529-020-070	PSC40-ID x PRO-E20 - 70	94	70	47.5	35	35	M12 x 1.75P	1 ~ 13	0.54
5133-529-020-100	PSC40-ID x PRO-E20 - 100	124	100	77.5	35	35	M12 x 1.75P	1 ~ 13	0.73
5133-529-025-070	PSC40-ID x PRO-E25 - 70	94	70	49	42	42	M16 x 2.0P	1 ~ 16	0.64
5133-529-025-100	PSC40-ID x PRO-E25 - 100	124	100	79	42	42	M16 x 2.0P	1 ~ 16	0.93
5133-529-032-070	PSC40-ID x PRO-E32 - 70	94	70	46	50	50	M16 x 2.0P	2 ~ 20	0.73
5133-529-032-100	PSC40-ID x PRO-E32 - 100	124	100	76	50	50	M16 x 2.0P	2 ~ 20	1.12
5133-529-032-125	PSC40-ID x PRO-E32 - 125	149	125	101	50	50	M16 x 2.0P	2 ~ 20	1.48
5133-529-032-150	PSC40-ID x PRO-E32 - 150	174	150	126	50	50	M16 x 2.0P	2 ~ 20	1.83
5134-529-016-070	PSC50-ID x PRO-E16 - 70	100	70	45	30	30	-	1 ~ 10	0.63
5134-529-016-100	PSC50-ID x PRO-E16 - 100	130	100	75	30	30	M10 x 1.5P	1 ~ 10	0.78
5134-529-016-125	PSC50-ID x PRO-E16 - 125	155	125	100	30	30	M10 x 1.5P	1 ~ 10	0.88
5134-529-016-150	PSC50-ID x PRO-E16 - 150	180	150	125	30	30	M10 x 1.5P	1 ~ 10	0.99
5134-529-020-070	PSC50-ID x PRO-E20 - 70	100	70	47	35	35	-	1 ~ 13	0.70
5134-529-020-100	PSC50-ID x PRO-E20 - 100	130	100	77	35	35	M12 x 1.75P	1 ~ 13	0.90
5134-529-020-125	PSC50-ID x PRO-E20 - 125	155	125	102	35	35	M12 x 1.75P	1 ~ 13	1.05
5134-529-020-150	PSC50-ID x PRO-E20 - 150	180	150	127	35	35	M12 x 1.75P	1 ~ 13	1.21
5134-529-025-070	PSC50-ID x PRO-E25 - 70	100	70	49	42	42	-	1 ~ 16	0.80
5134-529-025-100	PSC50-ID x PRO-E25 - 100	130	100	79	42	42	M16 x 2.0P	1 ~ 16	1.09
5134-529-025-125	PSC50-ID x PRO-E25 - 125	155	125	104	42	42	M16 x 2.0P	1 ~ 16	1.32
5134-529-025-150	PSC50-ID x PRO-E25 - 150	180	150	129	42	42	M16 x 2.0P	1 ~ 16	1.56
5134-529-032-070	PSC50-ID x PRO-E32 - 70	100	70	50	50	50	-	2 ~ 20	0.90
5134-529-032-100	PSC50-ID x PRO-E32 - 100	130	100	80	50	50	M16 x 2.0P	2 ~ 20	1.32
5134-529-032-125	PSC50-ID x PRO-E32 - 125	155	125	105	50	50	M16 x 2.0P	2 ~ 20	1.66
5134-529-032-150	PSC50-ID x PRO-E32 - 150	180	150	130	50	50	M16 x 2.0P	2 ~ 20	2.00

### Features:

- ▶ Superior interchangeability with ER collets.
- ▶ Assembled with ER spring collet (15µm, 10µm, 5µm), ERS metallic sealed collet (10µm, 5µm, 3µm) and ERS coolant FOD collet (10µm, 5µm, 3µm).
- ▶ The design of enlarged holder ID hole optimizes the coverage of ER collet, shortens the tool overhanging length, and improves runout accuracy and machining stability.
- ▶ The design of straight parts above and below the thread makes PRO-E tool holders have better contact with clamping nuts to achieve higher runout accuracy.
- ▶ PRO-E nuts without slots reduce the wind shear at high speed.

### Product information:

- ▶ Balance: G2.5 25,000 rpm. Higher balancing grade and revolution can be done upon request but additional charge is needed.

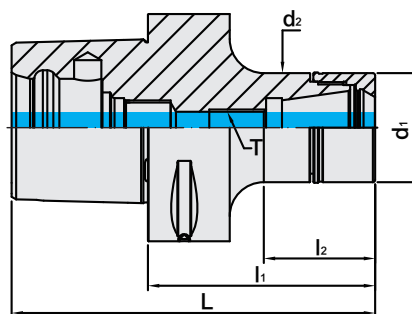
### Standard Accessory: • NUT

Collet	Nut	Coolant Supply Unit	Preset Screw	Spanner	KEY
P.W-11~34	P.W-54	P.W-72	P.W-107	P.W-75、77、81	P.W-72

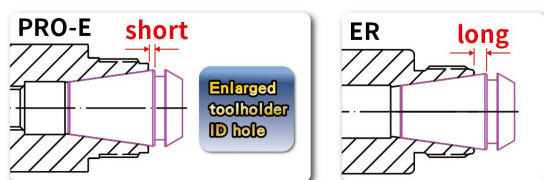


# PSC / PRO-E COLLET CHUCK

## PSC / PRO-E 筒夾式刀桿



MODEL NO.	TYPE	L	l <sub>1</sub>	l <sub>2</sub>	d <sub>1</sub>	d <sub>2</sub>	T	SIZE RANGE	WEIGHT (KGS)
5135-529-016-070	PSC63-ID x PRO-E16 - 70	108	70	43	30	30	-	1 ~ 10	0.94
5135-529-016-100	PSC63-ID x PRO-E16 - 100	138	100	73	30	30	M10 x 1.5P	1 ~ 10	1.09
5135-529-016-125	PSC63-ID x PRO-E16 - 125	163	125	98	30	30	M10 x 1.5P	1 ~ 10	1.18
5135-529-016-150	PSC63-ID x PRO-E16 - 150	188	150	123	30	30	M10 x 1.5P	1 ~ 10	1.26
5135-529-016-200	PSC63-ID x PRO-E16 - 200	238	200	173	30	30	M10 x 1.5P	1 ~ 10	1.44
5135-529-020-070	PSC63-ID x PRO-E20 - 70	108	70	43	35	35	-	1 ~ 13	1.00
5135-529-020-100	PSC63-ID x PRO-E20 - 100	138	100	70	35	35	M12 x 1.75P	1 ~ 13	1.21
5135-529-020-125	PSC63-ID x PRO-E20 - 125	163	125	95	35	35	M12 x 1.75P	1 ~ 13	1.35
5135-529-020-150	PSC63-ID x PRO-E20 - 150	188	150	120	35	35	M12 x 1.75P	1 ~ 13	1.49
5135-529-020-200	PSC63-ID x PRO-E20 - 200	238	200	170	35	35	M12 x 1.75P	1 ~ 13	1.76
5135-529-025-070	PSC63-ID x PRO-E25 - 70	108	70	45	42	42	-	1 ~ 16	1.11
5135-529-025-100	PSC63-ID x PRO-E25 - 100	138	100	75	42	42	M16 x 2.0P	1 ~ 16	1.39
5135-529-025-125	PSC63-ID x PRO-E25 - 125	163	125	100	42	42	M16 x 2.0P	1 ~ 16	1.60
5135-529-025-150	PSC63-ID x PRO-E25 - 150	188	150	125	42	42	M16 x 2.0P	1 ~ 16	1.82
5135-529-025-200	PSC63-ID x PRO-E25 - 200	238	200	175	42	42	M16 x 2.0P	1 ~ 16	2.26
5135-529-032-070	PSC63-ID x PRO-E32 - 70	108	70	45	50	50	-	2 ~ 20	1.21
5135-529-032-100	PSC63-ID x PRO-E32 - 100	138	100	75	50	50	M16 x 2.0P	2 ~ 20	1.61
5135-529-032-125	PSC63-ID x PRO-E32 - 125	163	125	100	50	50	M16 x 2.0P	2 ~ 20	1.94
5135-529-032-150	PSC63-ID x PRO-E32 - 150	188	150	125	50	50	M16 x 2.0P	2 ~ 20	2.27
5135-529-032-200	PSC63-ID x PRO-E32 - 200	238	200	175	50	50	M16 x 2.0P	2 ~ 20	2.93



### Features:

- ▶ Superior interchangeability with ER collets.
- ▶ Assembled with ER spring collet (15µm, 10µm, 5µm), ERS metallic sealed collet (10µm, 5µm, 3µm) and ERS coolant FOD collet (10µm, 5µm, 3µm).
- ▶ The design of enlarged holder ID hole optimizes the coverage of ER collet, shortens the tool overhanging length, and improves runout accuracy and machining stability.
- ▶ The design of straight parts above and below the thread makes PRO-E tool holders have better contact with clamping nuts to achieve higher runout accuracy.
- ▶ PRO-E nuts without slots reduce the wind shear at high speed.

### Product information:

- ▶ Balance: G2.5 25,000 rpm. Higher balancing grade and revolution can be done upon request but additional charge is needed.

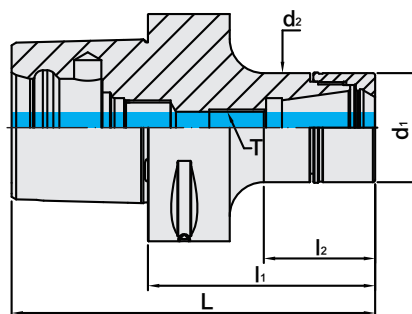
### Standard Accessory: • NUT

Collet	Nut	Coolant Supply Unit	Preset Screw	Spanner	KEY
P.W-11~34	P.W-54	P.W-72	P.W-107	P.W-75、77、81	P.W-72

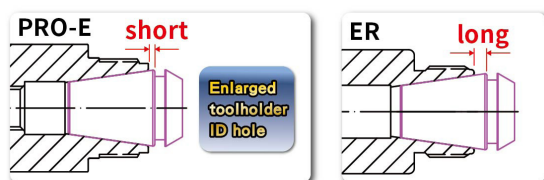


# PSC / PRO-E COLLET CHUCK

## PSC / PRO-E 筒夾式刀桿



MODEL NO.	TYPE	L	l <sub>1</sub>	l <sub>2</sub>	d <sub>1</sub>	d <sub>2</sub>	T	SIZE RANGE	WEIGHT (KGS)
5136-529-016-100	PSC80-ID x PRO-E16 - 100	148	100	65	30	30	M10 x 1.5P	1 ~ 10	2.00
5136-529-016-125	PSC80-ID x PRO-E16 - 125	173	125	90	30	30	M10 x 1.5P	1 ~ 10	2.13
5136-529-016-150	PSC80-ID x PRO-E16 - 150	198	150	110	30	30	M10 x 1.5P	1 ~ 10	2.27
5136-529-016-200	PSC80-ID x PRO-E16 - 200	248	200	160	30	30	M10 x 1.5P	1 ~ 10	2.52
5136-529-020-100	PSC80-ID x PRO-E20 - 100	148	100	65	35	35	M12 x 1.75P	1 ~ 13	2.10
5136-529-020-125	PSC80-ID x PRO-E20 - 125	173	125	90	35	35	M12 x 1.75P	1 ~ 13	2.28
5136-529-020-150	PSC80-ID x PRO-E20 - 150	198	150	110	35	35	M12 x 1.75P	1 ~ 13	2.46
5136-529-020-200	PSC80-ID x PRO-E20 - 200	248	200	160	35	35	M12 x 1.75P	1 ~ 13	2.80
5136-529-025-100	PSC80-ID x PRO-E25 - 100	148	100	65	42	42	M16 x 2.0P	1 ~ 16	2.26
5136-529-025-125	PSC80-ID x PRO-E25 - 125	173	125	90	42	42	M16 x 2.0P	1 ~ 16	2.50
5136-529-025-150	PSC80-ID x PRO-E25 - 150	198	150	110	42	42	M16 x 2.0P	1 ~ 16	2.76
5136-529-025-200	PSC80-ID x PRO-E25 - 200	248	200	160	42	42	M16 x 2.0P	1 ~ 16	3.23
5136-529-032-100	PSC80-ID x PRO-E32 - 100	148	100	65	50	50	M16 x 2.0P	2 ~ 20	2.46
5136-529-032-125	PSC80-ID x PRO-E32 - 125	173	125	90	50	50	M16 x 2.0P	2 ~ 20	2.79
5136-529-032-150	PSC80-ID x PRO-E32 - 150	198	150	115	50	50	M16 x 2.0P	2 ~ 20	3.14
5136-529-032-200	PSC80-ID x PRO-E32 - 200	248	200	165	50	50	M16 x 2.0P	2 ~ 20	3.84



### Features:

- ▶ Superior interchangeability with ER collets.
- ▶ Assembled with ER spring collet (15µm, 10µm, 5µm), ERS metallic sealed collet (10µm, 5µm, 3µm) and ERS coolant FOD collet (10µm, 5µm, 3µm).
- ▶ The design of enlarged holder ID hole optimizes the coverage of ER collet, shortens the tool overhanging length, and improves runout accuracy and machining stability.
- ▶ The design of straight parts above and below the thread makes PRO-E tool holders have better contact with clamping nuts to achieve higher runout accuracy.
- ▶ PRO-E nuts without slots reduce the wind shear at high speed.

### Product information:

- ▶ Balance: G2.5 25,000 rpm. Higher balancing grade and revolution can be done upon request but additional charge is needed.

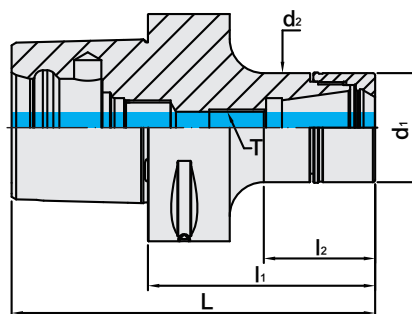
### Standard Accessory: • NUT

Collet	Nut	Coolant Supply Unit	Preset Screw	Spanner	KEY
P.W-11~34	P.W-54	P.W-72	P.W-107	P.W-75、77、81	P.W-72

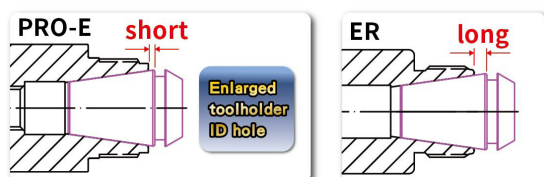


# PSC / PRO-E COLLET CHUCK

## PSC / PRO-E 筒夾式刀桿



MODEL NO.	TYPE	L	l <sub>1</sub>	l <sub>2</sub>	d <sub>1</sub>	d <sub>2</sub>	T	SIZE RANGE	WEIGHT (KGS)
5138-529-016-100	PSC100-ID x PRO-E16 - 100	160	100	44	30	30	M10 x 1.5P	1 ~ 10	3.98
5138-529-016-125	PSC100-ID x PRO-E16 - 125	185	125	69	30	30	M10 x 1.5P	1 ~ 10	4.11
5138-529-016-150	PSC100-ID x PRO-E16 - 150	210	150	94	30	30	M10 x 1.5P	1 ~ 10	4.23
5138-529-016-200	PSC100-ID x PRO-E16 - 200	260	200	144	30	30	M10 x 1.5P	1 ~ 10	4.48
5138-529-020-100	PSC100-ID x PRO-E20 - 100	160	100	49	35	35	M12 x 1.75P	1 ~ 13	3.94
5138-529-020-125	PSC100-ID x PRO-E20 - 125	185	125	74	35	35	M12 x 1.75P	1 ~ 13	4.13
5138-529-020-150	PSC100-ID x PRO-E20 - 150	210	150	99	35	35	M12 x 1.75P	1 ~ 13	4.30
5138-529-020-200	PSC100-ID x PRO-E20 - 200	260	200	149	35	35	M12 x 1.75P	1 ~ 13	4.63
5138-529-025-100	PSC100-ID x PRO-E25 - 100	160	100	49	42	42	M16 x 2.0P	1 ~ 16	4.08
5138-529-025-125	PSC100-ID x PRO-E25 - 125	185	125	74	42	42	M16 x 2.0P	1 ~ 16	4.32
5138-529-025-150	PSC100-ID x PRO-E25 - 150	210	150	99	42	42	M16 x 2.0P	1 ~ 16	4.55
5138-529-025-200	PSC100-ID x PRO-E25 - 200	260	200	149	42	42	M16 x 2.0P	1 ~ 16	5.03
5138-529-032-100	PSC100-ID x PRO-E32 - 100	160	100	49	50	50	M16 x 2.0P	2 ~ 20	4.23
5138-529-032-125	PSC100-ID x PRO-E32 - 125	185	125	74	50	50	M16 x 2.0P	2 ~ 20	4.58
5138-529-032-150	PSC100-ID x PRO-E32 - 150	210	150	99	50	50	M16 x 2.0P	2 ~ 20	4.93
5138-529-032-200	PSC100-ID x PRO-E32 - 200	260	200	149	50	50	M16 x 2.0P	2 ~ 20	5.63



### Features:

- ▶ Superior interchangeability with ER collets.
- ▶ Assembled with ER spring collet (15μm, 10μm, 5μm), ERS metallic sealed collet (10μm, 5μm, 3μm) and ERS coolant FOD collet (10μm, 5μm, 3μm).
- ▶ The design of enlarged holder ID hole optimizes the coverage of ER collet, shortens the tool overhanging length, and improves runout accuracy and machining stability.
- ▶ The design of straight parts above and below the thread makes PRO-E tool holders have better contact with clamping nuts to achieve higher runout accuracy.
- ▶ PRO-E nuts without slots reduce the wind shear at high speed.

### Product information:

- ▶ Balance: G2.5 25,000 rpm. Higher balancing grade and revolution can be done upon request but additional charge is needed.

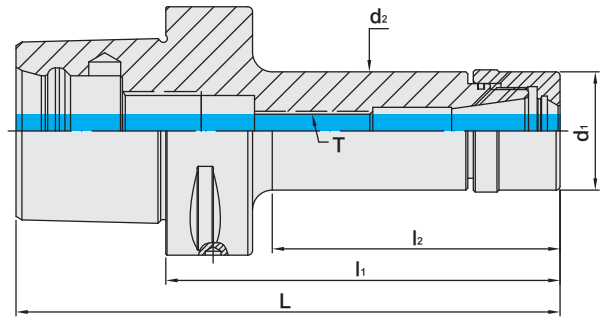
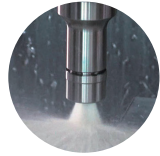
### Standard Accessory: • NUT

Collet	Nut	Coolant Supply Unit	Preset Screw	Spanner	KEY
P.W-11~34	P.W-54	P.W-72	P.W-107	P.W-75、77、81	P.W-72

# PSC / UT COLLET CHUCK



## PSC / UT 立銑刀夾頭



TW PAT NO. M298033  
 TW PAT NO. M311791  
 J P PAT NO. 3128766  
 K R PAT NO. 20-0433603  
 C N PAT NO. ZL200620132661.0  
 C H PAT NO. 696550  
 T R PAT NO. TR 2007 02942 Y  
 I T PAT NO. N.0000266731

MODEL NO.	TYPE	L	l <sub>1</sub>	l <sub>2</sub>	d <sub>1</sub>	d <sub>2</sub>	T	SIZE RANGE	WEIGHT (KGS)
5140-753-016-045	PSC32 x UT16 - 45	64	45	29	30	30	-	1 ~ 10	0.23
5141-753-016-070	PSC40 x UT16 - 70	94	70	47	30	30	M10 x 1.5P	1 ~ 10	0.46
5141-753-020-052	PSC40 x UT20 - 52	76	52	31.2	35	36	-	1 ~ 13	0.40
5141-753-025-055	PSC40 x UT25 - 55	79	55	35	42	42	-	1 ~ 16	0.70
5141-753-032-060	PSC40 x UT32 - 60	84	60	40	48	48	-	2 ~ 20	0.80
5142-753-016-100	PSC50 x UT16 - 100	130	100	75	30	30	M10 x 1.5P	1 ~ 10	0.78
5142-753-016-130	PSC50 x UT16 - 130	160	130	105	30	30	M10 x 1.5P	1 ~ 10	0.90
5142-753-020-055	PSC50 x UT20 - 55	85	55	32	35	36	-	1 ~ 13	0.60
5142-753-020-100	PSC50 x UT20 - 100	130	100	77	35	36	M12 x 1.75P	1 ~ 13	0.91
5142-753-020-130	PSC50 x UT20 - 130	160	130	107	35	36	M12 x 1.75P	1 ~ 13	1.10
5142-753-025-060	PSC50 x UT25 - 60	90	60	39	42	42	-	1 ~ 16	0.70
5142-753-025-100	PSC50 x UT25 - 100	130	100	79	42	42	M16 x 2.0P	1 ~ 16	1.10
5142-753-025-130	PSC50 x UT25 - 130	160	130	109	42	42	M16 x 2.0P	1 ~ 16	1.40
5142-753-032-057	PSC50 x UT32 - 57	87	57	36	48	48	-	2 ~ 20	0.70
5142-753-032-100	PSC50 x UT32 - 100	130	100	79	48	48	M16 x 2.0P	2 ~ 20	1.18

### Features:

- ▶ The deeper holder gauge line optimizes the coverage of ER spring collet and increases machining stability.
- ▶ UT clamping nut is designed without eccentric. Used with ER and ERE spring collets.
- ▶ The O-ring design on the front of holders prevents chips and coolant from entering holders.
- ▶ UT nuts without slots reduce the wind shear at high speed.

### Product information:

- ▶ Balance: G2.5 25,000 rpm. Higher balancing grade and revolution can be done upon request but additional charge is needed.

### Standard Accessory: • NUT

Collet	Nut	Coolant Supply Unit	Preset Screw	Spanner	KEY
P.W-11~14	P.W-55	P.W-72	P.W-107	P.W-75、77、81	P.W-72



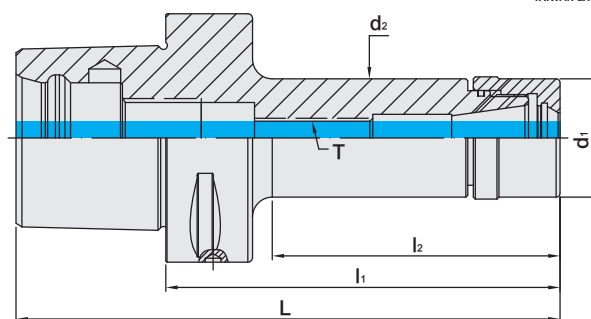
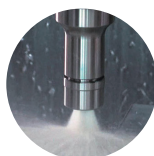
# PSC / UT COLLET CHUCK



## PSC / UT 立銑刀夾頭



台灣精品2012  
TAIWAN EXCELLENCE



TW PAT NO. M298033  
TW PAT NO. M311791  
J P PAT NO. 3128766  
K R PAT NO. 20-0433603  
C N PAT NO. ZL200620132661.0  
C H PAT NO. 696550  
T R PAT NO. TR.2007.02942 Y  
I T PAT NO. N.0000266731

MODEL NO.	TYPE	L	l <sub>1</sub>	l <sub>2</sub>	d <sub>1</sub>	d <sub>2</sub>	T	SIZE RANGE	WEIGHT (KGS)
5143-753-016-100	PSC63 x UT16 - 100	138	100	73	30	30	M10 x 1.5P	1 ~ 10	1.09
5143-753-016-130	PSC63 x UT16 - 130	168	130	103	30	30	M10 x 1.5P	1 ~ 10	1.19
5143-753-016-160	PSC63 x UT16 - 160	198	160	133	30	30	M10 x 1.5P	1 ~ 10	1.30
5143-753-020-060	PSC63 x UT20 - 60	98	60	33	35	36	-	1 ~ 13	0.95
5143-753-020-100	PSC63 x UT20 - 100	138	100	70	35	36	M12 x 1.75P	1 ~ 13	1.23
5143-753-020-130	PSC63 x UT20 - 130	168	130	100	35	36	M12 x 1.75P	1 ~ 13	1.41
5143-753-020-160	PSC63 x UT20 - 160	198	160	130	35	36	M12 x 1.75P	1 ~ 13	1.58
5143-753-025-065	PSC63 x UT25 - 65	103	65	38	42	42	-	1 ~ 16	0.95
5143-753-025-100	PSC63 x UT25 - 100	138	100	73	42	42	M16 x 2.0P	1 ~ 16	1.25
5143-753-025-130	PSC63 x UT25 - 130	168	130	103	42	42	M16 x 2.0P	1 ~ 16	1.54
5143-753-025-160	PSC63 x UT25 - 160	198	160	133	42	42	M16 x 2.0P	1 ~ 16	1.82
5143-753-032-070	PSC63 x UT32 - 70	108	70	43	48	48	-	2 ~ 20	1.15
5143-753-032-100	PSC63 x UT32 - 100	138	100	73	48	48	M16 x 2.0P	2 ~ 20	1.48
5143-753-032-130	PSC63 x UT32 - 130	168	130	103	48	48	M16 x 2.0P	2 ~ 20	1.87
5143-753-032-160	PSC63 x UT32 - 160	198	160	133	48	48	M16 x 2.0P	2 ~ 20	2.23
5144-753-016-070	PSC80 x UT16 - 70	118	70	35	30	30	-	1 ~ 10	2.10
5144-753-016-100	PSC80 x UT16 - 100	148	100	65	30	30	M10 x 1.5P	1 ~ 10	2.70
5144-753-016-160	PSC80 x UT16 - 160	208	160	120	30	30	M10 x 1.5P	1 ~ 10	2.90
5144-753-020-070	PSC80 x UT20 - 70	118	70	35	35	35	-	1 ~ 13	2.60
5144-753-020-100	PSC80 x UT20 - 100	148	100	65	35	35	M12 x 1.75P	1 ~ 13	2.90
5144-753-020-160	PSC80 x UT20 - 160	208	160	120	35	35	M12 x 1.75P	1 ~ 13	3.20
5144-753-025-070	PSC80 x UT25 - 70	118	70	35	42	42	-	1 ~ 16	2.70
5144-753-025-100	PSC80 x UT25 - 100	148	100	65	42	42	M16 x 2.0P	1 ~ 16	2.90
5144-753-025-160	PSC80 x UT25 - 160	208	160	120	42	42	M16 x 2.0P	1 ~ 16	3.50
5144-753-032-070	PSC80 x UT32 - 70	118	70	39	48	48	-	2 ~ 20	1.96
5144-753-032-100	PSC80 x UT32 - 100	148	100	65	48	48	M16 x 2.0P	2 ~ 20	2.32
5144-753-032-160	PSC80 x UT32 - 160	208	160	125	48	48	M16 x 2.0P	2 ~ 20	3.06

### Features:

- ▶ The deeper holder gauge line optimizes the coverage of ER spring collet and increases machining stability.
- ▶ UT clamping nut is designed without eccentric. Used with ER and ERE spring collets.
- ▶ The O-ring design on the front of holders prevents chips and coolant from entering holders.
- ▶ UT nuts without slots reduce the wind shear at high speed.

### Product information:

- ▶ Balance: G2.5 25,000 rpm. Higher balancing grade and revolution can be done upon request but additional charge is needed.

### Standard Accessory: • NUT

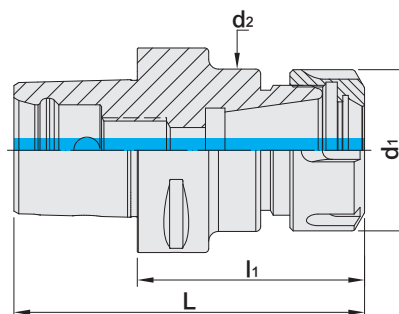
Collet	Nut	Coolant Supply Unit	Preset Screw	Spanner	KEY
P.W-11~14	P.W-55	P.W-72	P.W-107	P.W-75、77、81	P.W-72



# PSC / ER COLLET CHUCK



## PSC / ER 立銑刀夾頭



TW PAT NO. M298033  
 TW PAT NO. M311791  
 J P PAT NO. 3128766  
 K R PAT NO. 20-0433603  
 C N PAT NO. ZL200620132661.0  
 C H PAT NO. 696550  
 T R PAT NO. TR 2007 02942 Y  
 I T PAT NO. N.0000266731

MODEL NO.	TYPE	L	l <sub>1</sub>	d <sub>1</sub>	d <sub>2</sub>	SIZE RANGE	WEIGHT (KGS)
5140-108-016-045	PSC32 x ER16A - 45	64	45	28	32	1 ~ 10	0.20
5140-108-020-045	PSC32 x ER20A - 45	64	45	34	32	1 ~ 13	0.30
5141-108-016-070	PSC40 x ER16A - 70	94	70	28	28	1 ~ 10	0.40
5141-108-020-052	PSC40 x ER20A - 52	76	52	34	34	1 ~ 13	0.30
5141-110-025-052	PSC40 x ER25 - 52	76	52	42	40	1 ~ 16	0.40
5141-110-032-054	PSC40 x ER32 - 54	78	54	50	40	2 ~ 20	0.50
5142-108-016-100	PSC50 x ER16A - 100	130	100	28	28	1 ~ 10	0.90
5142-108-020-055	PSC50 x ER20A - 55	85	55	34	34	1 ~ 13	0.50
5142-108-020-100	PSC50 x ER20A - 100	130	100	34	34	1 ~ 13	0.80
5142-110-025-055	PSC50 x ER25 - 55	85	55	42	42	1 ~ 16	0.50
5142-110-032-057	PSC50 x ER32 - 57	87	57	50	50	2 ~ 20	0.60
5142-110-032-100	PSC50 x ER32 - 100	130	100	50	50	2 ~ 20	0.90
5143-108-016-100	PSC63 x ER16A - 100	138	100	28	28	1 ~ 10	1.30
5143-108-020-060	PSC63 x ER20A - 60	98	60	34	34	1 ~ 13	0.80
5143-108-020-100	PSC63 x ER20A - 100	138	100	34	34	1 ~ 13	1.29
5143-110-025-060	PSC63 x ER25 - 60	98	60	42	42	1 ~ 16	0.90
5143-110-025-100	PSC63 x ER25 - 100	138	100	42	42	1 ~ 16	1.30
5143-110-032-070	PSC63 x ER32 - 70	108	70	50	50	2 ~ 20	0.80
5143-110-032-100	PSC63 x ER32 - 100	138	100	50	50	2 ~ 20	1.50
5143-110-040-065	PSC63 x ER40 - 65	103	65	63	63	3 ~ 26	1.10
5144-108-020-065	PSC80 x ER20A - 65	113	65	34	34	1 ~ 13	1.40
5144-110-025-070	PSC80 x ER25 - 70	118	70	42	42	1 ~ 16	1.60
5144-110-032-070	PSC80 x ER32 - 70	118	70	50	50	2 ~ 20	1.80
5144-110-032-160	PSC80 x ER32 - 160	208	160	50	50	2 ~ 20	2.00
5144-110-040-070	PSC80 x ER40 - 70	118	70	63	63	3 ~ 26	2.30
5144-110-040-160	PSC80 x ER40 - 160	208	160	63	63	3 ~ 26	4.10
5144-110-050-080	PSC80 x ER50 - 80	128	80	78	78	6 ~ 34	4.60
5146-110-032-160	PSC100 x ER32 - 160	220	160	50	50	2 ~ 20	5.70
5146-110-040-160	PSC100 x ER40 - 160	220	160	63	63	2 ~ 20	5.80
5146-110-050-160	PSC100 x ER50 - 160	220	160	63	63	3 ~ 26	6.60

### Features:

- ▶ According to DIN ISO 15488.
- ▶ This ER collet chuck has superior flexibility for use with all tool types, e.g. drills, taps, mills, reamers.
- ▶ It is recommended to tighten the clamping nuts using a torque wrench. Refer to NO.75 General Catalog- Accessories for the info. of recommended tightening torque.

### Product information:

- ▶ Balance: G2.5 25,000 rpm. Higher balancing grade and revolution can be done upon request but additional charge is needed.

### Standard Accessory: • NUT

Collet	Nut	Coolant Supply Unit	Preset Screw	Spanner	KEY
P.W-11~34	P.W-55~59	P.W-72	P.W-107	P.W-75~77、79、81	P.W-72



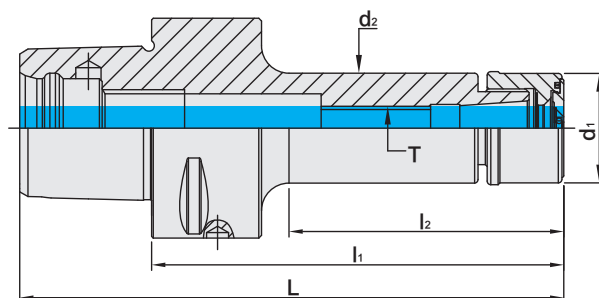
# PSC / SKX COLLET CHUCK

5 $\mu$ m

## PSC / SKX 立銑刀夾頭



台灣精品 2012  
TAIWAN EXCELLENCE



MODEL NO.	TYPE	L	l <sub>1</sub>	l <sub>2</sub>	d <sub>1</sub>	d <sub>2</sub>	T	SIZE RANGE	WEIGHT (KGS)
5141-790-006-060	PSC40 x SKX6 - 60	84	60	35	19.5	19.5	M8 x 1.25P	1 ~ 6	0.28
5141-790-010-075	PSC40 x SKX10 - 75	99	75	50	30	30	M12 x 1.75P	2 ~ 10	0.43
5141-790-013-050	PSC40 x SKX13 - 50	74	50	29	35	33	-	2 ~ 13	0.70
5141-790-016-080	PSC40 x SKX16 - 80	104	80	55	40	40	M18 x 1.5P	2 ~ 16	0.54
5142-790-006-060	PSC50 x SKX6 - 60	90	60	35	19.5	19.5	M8 x 1.25P	1 ~ 6	0.45
5142-790-006-080	PSC50 x SKX6 - 80	110	80	55	19.5	19.5	M8 x 1.25P	1 ~ 6	0.52
5142-790-010-060	PSC50 x SKX10 - 60	90	60	35	30	30	M12 x 1.75P	2 ~ 10	0.53
5142-790-010-090	PSC50 x SKX10 - 90	120	90	65	30	30	M12 x 1.75P	2 ~ 10	0.63
5142-790-013-060	PSC50 x SKX13 - 60	90	60	35	35	33	-	2 ~ 13	0.70
5142-790-016-080	PSC50 x SKX16 - 80	110	80	55	40	40	M18 x 1.5P	2 ~ 16	0.72
5142-790-016-105	PSC50 x SKX16 - 105	135	105	80	40	40	M18 x 1.5P	2 ~ 16	1.27
5143-790-006-060	PSC63 x SKX6 - 60	98	60	33	19.5	19.5	M8 x 1.25P	1 ~ 6	0.81
5143-790-006-100	PSC63 x SKX6 - 100	138	100	73	19.5	19.5	M8 x 1.25P	1 ~ 6	0.88
5143-790-006-120	PSC63 x SKX6 - 120	158	120	93	19.5	19.5	M8 x 1.25P	1 ~ 6	0.92
5143-790-010-060	PSC63 x SKX10 - 60	98	60	33	30	30	M12 x 1.75P	2 ~ 10	0.87
5143-790-010-105	PSC63 x SKX10 - 105	143	105	78	30	30	M12 x 1.75P	2 ~ 10	1.12
5143-790-010-120	PSC63 x SKX10 - 120	158	120	93	30	30	M12 x 1.75P	2 ~ 10	1.19
5143-790-013-090	PSC63 x SKX13 - 90	128	90	63	35	33	M12 x 1.75P	2 ~ 13	1.20
5143-790-016-080	PSC63 x SKX16 - 80	118	80	53	40	40	-	2 ~ 16	1.06
5143-790-016-105	PSC63 x SKX16 - 105	143	105	83	40	40	M18 x 1.5P	2 ~ 16	1.28
5143-790-016-120	PSC63 x SKX16 - 120	158	120	98	40	40	M18 x 1.5P	2 ~ 16	1.41
5143-790-020-090	PSC63 x SKX20 - 90	128	90	60	48.5	48.5	-	3 ~ 20	1.32
5143-790-020-105	PSC63 x SKX20 - 105	143	105	80	48.5	48.5	M22 x 1.5P	3 ~ 20	1.48
5143-790-020-135	PSC63 x SKX20 - 135	173	135	95	48.5	48.5	M22 x 1.5P	3 ~ 20	1.80
5143-790-025-090	PSC63 x SKX25 - 90	128	90	64	55	55	-	3 ~ 25.4	1.32
5143-790-025-135	PSC63 x SKX25 - 135	173	135	109	55	55	M28 x 2.0P	3 ~ 25.4	1.82
5144-790-010-075	PSC80 x SKX10 - 75	123	75	22	30	30	M28 x 2.0P	2 ~ 10	1.84
5144-790-010-090	PSC80 x SKX10 - 90	138	90	42	30	30	-	2 ~ 10	1.91
5144-790-016-075	PSC80 x SKX16 - 75	123	75	37	40	40	M12 x 1.75P	2 ~ 16	1.89
5144-790-016-090	PSC80 x SKX16 - 90	138	90	57	40	40	M18 x 1.5P	2 ~ 16	2.01

### Features:

- ▶ Higher clamping force and precision stability than 8° ER design due to 4° taper angle collet design.
- ▶ SKX sealed nuts are capable of coolant pressure up to 70bar.
- ▶ Nuts in smaller OD and without slots are suitable for high-speed machining with less interference.
- ▶ Shorter overhanging tool length, better rigidity.
- ▶ SKX tool holders of the length over 120mm have curved line design for better rigidity.

### Product information:

- ▶ Balance: G2.5 25,000 rpm. Higher balancing grade and revolution can be done upon request but additional charge is needed.

### Standard Accessory: • NUT

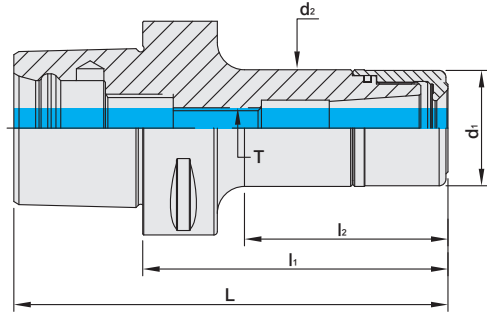
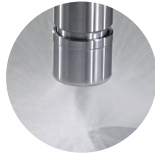
Collet	Nut	Sealed Cap	Coolant Supply Unit	Preset Screw	Spanner	Sealed Cap Spanner	KEY
P.W-35	P.W-62	P.W-63	P.W-72	P.W-107	P.W-75、77、81	P.W-80	P.W-72

# PSC / SK3 COLLET CHUCK

5 $\mu$ m

PSC / SK3 高速機專用夾頭

台灣精品 2012  
TAIWAN EXCELLENCE



MODEL NO.	TYPE	L	l <sub>1</sub>	l <sub>2</sub>	d <sub>1</sub>	d <sub>2</sub>	T	SIZE RANGE	WEIGHT (KGS)
5141-763-006-075	PSC40 x SK306 - 75	99	75	48	19.5	19.5	M8 x 1.25P	1 ~ 6	0.20
5141-763-010-075	PSC40 x SK310 - 75	99	75	28	27.5	27.5	M12 x 1.75P	2 ~ 10	0.20
5141-763-013-075	PSC40 x SK313 - 75	99	75	54	33	33	M12 x 1.75P	2 ~ 13	0.30
5142-763-006-060	PSC50 x SK306 - 60	90	60	34	19.5	19.5	M8 x 1.25P	1 ~ 6	0.50
5142-763-006-075	PSC50 x SK306 - 75	105	75	49	19.5	19.5	M8 x 1.25P	1 ~ 6	0.60
5142-763-006-090	PSC50 x SK306 - 90	120	90	62	19.5	19.5	M8 x 1.25P	1 ~ 6	0.70
5142-763-010-075	PSC50 x SK310 - 75	105	75	49	27.5	27.5	M12 x 1.75P	2 ~ 10	0.70
5142-763-010-090	PSC50 x SK310 - 90	120	90	64	27.5	27.5	M12 x 1.75P	2 ~ 10	0.80
5142-763-013-075	PSC50 x SK313 - 75	105	75	49	33	33	M12 x 1.75P	2 ~ 13	0.70
5142-763-013-090	PSC50 x SK313 - 90	120	90	64	33	33	M12 x 1.75P	2 ~ 13	0.90
5142-763-016-075	PSC50 x SK316 - 75	105	75	53	40	40	M18 x 1.5P	2 ~ 16	0.90
5142-763-016-090	PSC50 x SK316 - 90	120	90	69	40	40	M18 x 1.5P	2 ~ 16	1.10
5143-763-006-060	PSC63 x SK306 - 60	98	60	30	19.5	19.5	M8 x 1.25P	1 ~ 6	0.80
5143-763-006-075	PSC63 x SK306 - 75	113	75	43	19.5	19.5	M8 x 1.25P	1 ~ 6	0.90
5143-763-006-090	PSC63 x SK306 - 90	128	90	58	19.5	19.5	M8 x 1.25P	1 ~ 6	1.00
5143-763-010-075	PSC63 x SK310 - 75	98	75	43	27.5	27.5	M12 x 1.75P	2 ~ 10	0.90
5143-763-010-090	PSC63 x SK310 - 90	128	90	58	27.5	27.5	M12 x 1.75P	2 ~ 10	1.10
5143-763-013-075	PSC63 x SK313 - 75	98	75	45	33	33	M12 x 1.75P	2 ~ 13	1.00
5143-763-013-090	PSC63 x SK313 - 90	128	90	60	33	33	M12 x 1.75P	2 ~ 13	1.20
5143-763-016-075	PSC63 x SK316 - 75	98	75	47	40	40	M18 x 1.5P	2 ~ 16	1.10
5143-763-016-090	PSC63 x SK316 - 90	128	90	60	40	40	M18 x 1.5P	2 ~ 16	1.30
5144-763-006-060	PSC80 x SK306 - 60	108	60	27	19.5	19.5	M8 x 1.25P	1 ~ 6	1.80
5144-763-006-075	PSC80 x SK306 - 75	123	75	42	19.5	19.5	M8 x 1.25P	1 ~ 6	1.90
5144-763-006-090	PSC80 x SK306 - 90	138	90	57	19.5	19.5	M8 x 1.25P	1 ~ 6	2.00
5144-763-010-075	PSC80 x SK310 - 75	123	75	42	27.5	27.5	M12 x 1.75P	2 ~ 10	2.10
5144-763-010-090	PSC80 x SK310 - 90	138	90	57	27.5	27.5	M12 x 1.75P	2 ~ 10	2.20
5144-763-013-075	PSC80 x SK313 - 75	123	75	42	33	33	M12 x 1.75P	2 ~ 13	2.10
5144-763-013-090	PSC80 x SK313 - 90	138	90	57	33	33	M12 x 1.75P	2 ~ 13	2.30
5144-763-016-075	PSC80 x SK316 - 75	123	75	42	40	40	M18 x 1.5P	2 ~ 16	2.20
5144-763-016-090	PSC80 x SK316 - 90	138	90	57	40	40	M18 x 1.5P	2 ~ 16	2.40

**Features:**

- ▶ Using 4° taper angle collets achieves higher clamping power and stability than 8° design of the ER system.
- ▶ Smaller OD nuts without slots are ideal for high-speed machining with less interference.
- ▶ Dustproof design of adding O rings prevents metal chips and coolants from getting into tool holders.

**Product information:**

- ▶ Balance: G2.5 25,000 rpm. Higher balancing grade and revolution can be done upon request but additional charge is needed.

**Standard Accessory: • NUT**

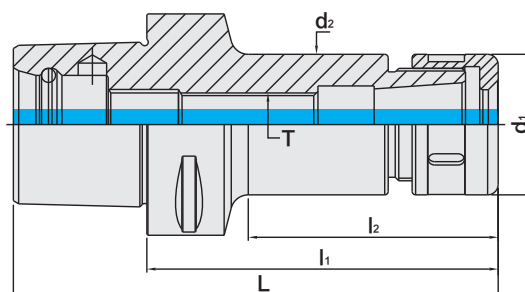
Collet	Nut	Coolant Supply Unit	Preset Screw	Spanner	KEY
P.W-35~39	P.W-59	P.W-72	P.W-107	P.W-75、77、81	P.W-72



# PSC / SKS COLLET CHUCK

5 $\mu$ m

PSC / SKS 高速機專用夾頭

台灣精品 2012  
TAIWAN EXCELLENCE

TW PAT NO. M270871

MODEL NO.	TYPE	L	l <sub>1</sub>	l <sub>2</sub>	d <sub>1</sub>	d <sub>2</sub>	T	SIZE RANGE	WEIGHT (KGS)
5140-658-006-045	PSC32 x SKS6 - 45	64	45	28	18	18	M8 x 1.25P	1 ~ 6	0.20
5140-658-010-045	PSC32 x SKS10 - 45	64	45	29	30	30	-	2 ~ 10	0.20
5141-658-006-050	PSC40 x SKS6 - 50	74	50	28	18	18	M8 x 1.25P	1 ~ 6	0.50
5141-658-010-050	PSC40 x SKS10 - 50	74	50	28	30	30	-	2 ~ 10	0.60
5141-658-013-050	PSC40 x SKS13 - 50	74	50	29	35	33	-	2 ~ 13	0.70
5141-658-016-050	PSC40 x SKS16 - 50	74	50	31.3	40	40	-	2 ~ 16	0.80
5142-658-006-060	PSC50 x SKS6 - 60	90	60	35	18	18	M8 x 1.25P	1 ~ 6	0.50
5142-658-010-060	PSC50 x SKS10 - 60	90	60	35	30	27.6	M12 x 1.75P	2 ~ 10	0.60
5142-658-013-060	PSC50 x SKS13 - 60	90	60	35	35	33	-	2 ~ 13	0.70
5142-658-016-060	PSC50 x SKS16 - 60	90	60	38	40	40	-	2 ~ 16	0.80
5143-658-006-090	PSC63 x SKS6 - 90	128	90	46	18	18	M8 x 1.25P	1 ~ 6	1.00
5143-658-010-090	PSC63 x SKS10 - 90	128	90	60	30	30	M12 x 1.75P	2 ~ 10	1.10
5143-658-013-090	PSC63 x SKS13 - 90	128	90	63	35	33	M12 x 1.75P	2 ~ 13	1.20
5143-658-016-100	PSC63 x SKS16 - 100	138	100	71	40	40	M18 x 1.5P	2 ~ 16	1.30
5143-658-020-100	PSC63 x SKS20 - 100	138	100	75	48.5	48.5	M22 x 1.5P	3 ~ 20	1.40

### Features:

- ▶ T.I.R. is within 5 $\mu$ m at a 4D distance.
- ▶ Using with 4° taper angle SKS collets achieve better clamping force and accuracy stability than 8° ER collets.
- ▶ Smaller OD nuts reduce interference. Standard revolution is G2.5 25,000RPM, suitable for high speed machining.
- ▶ Besides standard SKS clamping nut, SKS wind resistance nut and SKS sealed nut are available for customers to choose from (must purchase additionally).

### Product information:

- ▶ Balance: G2.5 25,000 rpm. Higher balancing grade and revolution can be done upon request but additional charge is needed.

### Standard Accessory: • NUT

Collet	Nut	Coolant Supply Unit	Preset Screw	Spanner	KEY
P.W-35~39	P.W-60~61	P.W-72	P.W-107	P.W-75~77、80~81	P.W-72

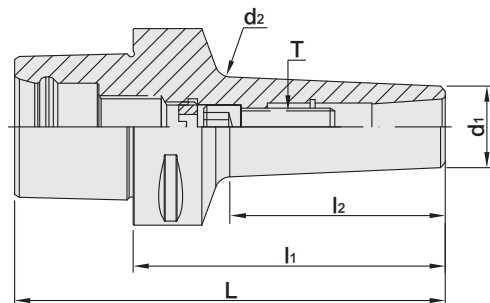


# PSC / SBL SLIM-FIT COLLET CHUCK

PSC / SBL 後拉式立銑刀夾頭



TW PAT NO. M274178



MODEL NO.	TYPE	L	l <sub>1</sub>	l <sub>2</sub>	d <sub>1</sub>	d <sub>2</sub>	T	RECOMMENDED TORQUE		SIZE RANGE	WEIGHT (KGS)
								N.m	lbf-ft		
5140-648-006-075	PSC32 x SBL6 - 75	94	75	58	14	20.1	M6 x 1.0P	12	9	3 ~ 6	0.50
5140-648-012-090	PSC32 x SBL12 - 90	109	90	74	26	31.2	M10 x 1.5P	45	33	3 ~ 12	0.70
5141-648-006-075	PSC40 x SBL6 - 75	99	75	43	14	18.5	M6 x 1.0P	12	9	3 ~ 6	0.60
5141-648-012-090	PSC40 x SBL12 - 90	114	90	68	26	31.9	M10 x 1.5P	45	33	3 ~ 12	0.70
5141-648-020-105	PSC40 x SBL20 - 105	129	105	57	35	40	M12 x 1.75P	60	44	3 ~ 20	0.80
5142-648-006-080	PSC50 x SBL6 - 80	110	80	45	14	18.8	M6 x 1.0P	12	9	3 ~ 6	0.60
5142-648-008-100	PSC50 x SBL8 - 100	130	100	70.5	20	27.3	M8 x 1.25P	29	21	3 ~ 8	0.65
5142-648-012-105	PSC50 x SBL12 - 105	135	105	80	26	33	M10 x 1.5P	45	33	3 ~ 12	0.70
5142-648-020-115	PSC50 x SBL20 - 115	145	115	94	35	43.2	M12 x 1.75P	60	44	3 ~ 20	0.80
5143-648-006-080	PSC63 x SBL6 - 80	118	80	43	14	18.5	M6 x 1.0P	12	9	3 ~ 6	1.00
5143-648-008-100	PSC63 x SBL8 - 100	138	100	68.5	20	27.1	M8 x 1.25P	29	21	3 ~ 8	0.98
5143-648-012-100	PSC63 x SBL12 - 100	138	100	69	26	32	M10 x 1.5P	45	33	3 ~ 12	1.20
5143-648-020-120	PSC63 x SBL20 - 120	158	120	91	35	42.9	M12 x 1.75P	60	44	3 ~ 20	1.40
5144-648-006-080	PSC80 x SBL6 - 80	128	80	40.5	14	18.2	M6 x 1.0P	12	9	3 ~ 6	2.10
5144-648-008-100	PSC80 x SBL8 - 100	148	100	60.5	20	26.3	M8 x 1.25P	29	21	3 ~ 8	1.9
5144-648-012-100	PSC80 x SBL12 - 100	148	100	31.2	26	60.4	M10 x 1.5P	45	33	3 ~ 12	2.40
5144-648-020-120	PSC80 x SBL20 - 120	168	120	42	35	80.4	M12 x 1.75P	60	44	3 ~ 20	2.60

## Features:

- ▶ The design of non-clamping nut and slim front ends reduces interference, ideal for deep hole machining.
- ▶ Taper angle 4° increases the stability of clamping precision.
- ▶ T.I.R. is within 5µm at 4D distance.

## Product information:

- ▶ Balance: G2.5 25,000 rpm. Higher balancing grade and revolution can be done upon request but additional charge is needed.

Collet	Coolant Supply Unit	Screw	Spanner	KEY
P.W-40	P.W-72	P.W-110	P.W-80	P.W-72

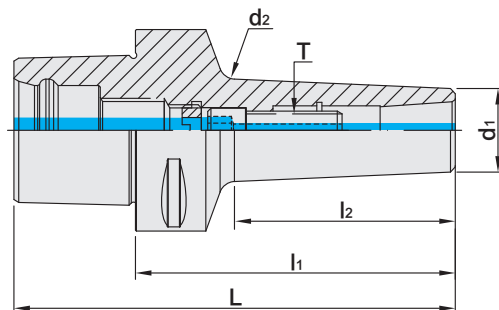


# PSC / SBLC SLIM-FIT COLLET CHUCK

## PSC / SBLC 後拉式立銑刀夾頭



台灣精品 2012  
TAIWAN EXCELLENCE



TW PAT NO. M274178

MODEL NO.	TYPE	L	l <sub>1</sub>	l <sub>2</sub>	d <sub>1</sub>	d <sub>2</sub>	T	RECOMMENDED TORQUE		SIZE RANGE	WEIGHT (KGS)
								N.m	lbf-ft		
5140-623-006-075	PSC32 x SBLC6 - 75	94	75	58	14	20.1	M6 x 1.0P	12	9	3 ~ 6	0.50
5140-623-012-090	PSC32 x SBLC12 - 90	109	90	74	26	31.2	M10 x 1.5P	45	33	3 ~ 12	0.70
5141-623-006-075	PSC40 x SBLC6 - 75	99	75	43	14	18.5	M6 x 1.0P	12	9	3 ~ 6	0.60
5141-623-012-090	PSC40 x SBLC12 - 90	114	90	68	26	31.9	M10 x 1.5P	45	33	3 ~ 12	0.70
5141-623-020-105	PSC40 x SBLC20 - 105	129	105	57	35	40	M12 x 1.75P	60	44	3 ~ 20	0.80
5142-623-006-080	PSC50 x SBLC6 - 80	110	80	45	14	18.8	M6 x 1.0P	12	9	3 ~ 6	0.60
5142-623-008-100	PSC50 x SBLC8 - 100	130	100	70.5	20	27.3	M8 x 1.25P	29	21	3 ~ 8	0.65
5142-623-012-105	PSC50 x SBLC12 - 105	135	105	80	26	33	M10 x 1.5P	45	33	3 ~ 12	0.70
5142-623-020-115	PSC50 x SBLC20 - 115	145	115	94	35	43.2	M12 x 1.75P	60	44	3 ~ 20	0.80
5143-623-006-080	PSC63 x SBLC6 - 80	118	80	43	14	18.5	M6 x 1.0P	12	9	3 ~ 6	1.00
5143-623-008-100	PSC63 x SBLC8 - 100	138	100	68.5	20	27.1	M8 x 1.25P	29	21	3 ~ 8	0.98
5143-623-012-100	PSC63 x SBLC12 - 100	138	100	69	26	32	M10 x 1.5P	45	33	3 ~ 12	1.20
5143-623-020-120	PSC63 x SBLC20 - 120	158	120	91	35	42.9	M12 x 1.75P	60	44	3 ~ 20	1.40
5144-623-006-080	PSC80 x SBLC6 - 80	128	80	40.5	14	18.2	M6 x 1.0P	12	9	3 ~ 6	2.10
5144-623-008-100	PSC80 x SBLC8 - 100	148	100	60.5	20	26.3	M8 x 1.25P	29	21	3 ~ 8	1.9
5144-623-012-100	PSC80 x SBLC12 - 100	148	100	31.2	26	60.4	M10 x 1.5P	45	33	3 ~ 12	2.40
5144-623-020-120	PSC80 x SBLC20 - 120	168	120	42	35	80.4	M12 x 1.75P	60	44	3 ~ 20	2.60

### Features:

- ▶ SBLC collet chuck used for center coolant improves the metal chip removal capability and the surface finish of the workpiece.
- ▶ The design of non-clamping nut and slim front ends reduces interference, ideal for deep hole machining.
- ▶ T.I.R. is within 5µm at 4D distance.
- ▶ Taper angle 4° increases the stability of clamping precision.

### Product information:

- ▶ Balance: G2.5 25,000 rpm. Higher balancing grade and revolution can be done upon request but additional charge is needed.
- ▶ Used with SLC sealed collet and coolant through cutters.

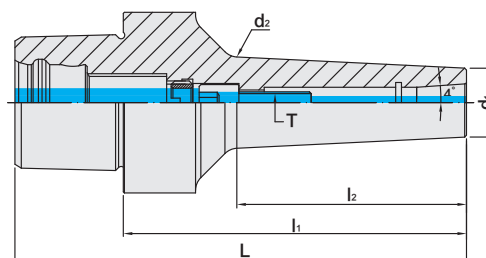
Collet	Coolant Supply Unit	Screw	Spanner	KEY
P.W-41	P.W-72	P.W-110	P.W-80	P.W-72

# PSC / EBL SLIM-FIT COLLET CHUCK

## PSC / EBL 後拉式刀桿



台灣精品2012  
TAIWAN EXCELLENCE



MODEL NO.	TYPE	L	l <sub>1</sub>	l <sub>2</sub>	d <sub>1</sub>	d <sub>2</sub>	T	RECOMMENDED TORQUE		SIZE RANGE	WEIGHT (KGS)
								N.m	lbf-ft		
5141-277-006-100	PSC40 x EBL6 - 100	124	100	75.2	19.05	26.4	M6 x 1.0P	12	9	3 ~ 6	0.58
5142-277-006-100	PSC50 x EBL6 - 100	130	100	68.5	19.05	25.7	M6 x 1.0P	12	9	3 ~ 6	0.79
5142-277-008-100	PSC50 x EBL8 - 100	130	100	74.1	22.225	29.4	M8 x 1.25P	29	21	3 ~ 8	0.79
5143-277-006-100	PSC63 x EBL6 - 100	138	100	66.4	19.05	25.5	M6 x 1.0P	12	9	3 ~ 6	1.10
5143-277-008-100	PSC63 x EBL8 - 100	138	100	64.8	22.225	28.5	M8 x 1.25P	29	21	3 ~ 8	1.15
5143-277-008-125	PSC63 x EBL8 - 125	163	125	91	22.225	31.1	M8 x 1.25P	29	21	3 ~ 8	1.25
5143-277-008-150	PSC63 x EBL8 - 150	188	150	116.8	22.225	33.7	M8 x 1.25P	29	21	3 ~ 8	1.37
5144-277-006-100	PSC80 x EBL6 - 100	148	100	66.4	19.05	25.5	M6 x 1.0P	12	9	3 ~ 6	2.19
5144-277-008-100	PSC80 x EBL8 - 100	148	100	64.8	22.225	28.5	M8 x 1.25P	29	21	3 ~ 8	3.56



▶ SBL



▶ EBL

### Features:

- ▶ EBL collet with extended length shortens tool overhanging length and improves the machining stability.
- ▶ The optimized design of thicker neck improves the machining rigidity and eliminates vibration, resulting in excellent surface finish of workpiece.
- ▶ Collet types: EBL collet and EBL sealed collets. The latter is capable of coolant pressure up to 25bar.

### Product information:

- ▶ Balance: G2.5 25,000rpm.

### Standard Accessory: • SPANNER

Collet	Sealed Collet	Coolant Supply Unit	Screw	Spanner	KEY
P.W-42	P.W-42	P.W-72	P.W-110	P.W-80	P.W-72



# PSC / HBL SLIM-FIT COLLET CHUCK

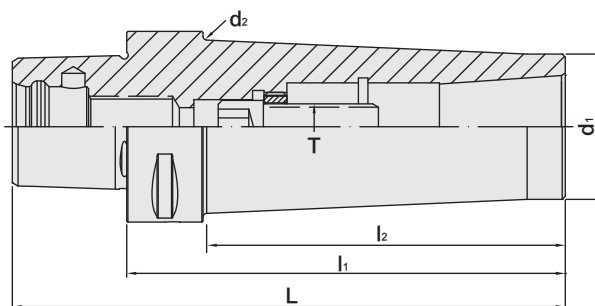
PSC / HBL 後拉式立銑刀夾頭



台灣精品 2012  
TAIWAN EXCELLENCE



TW PAT NO. M488361  
J P PAT NO. 3193771  
D E PAT NO. Nr.202014103



MODEL NO.	TYPE	L	l <sub>1</sub>	l <sub>2</sub>	d <sub>1</sub>	d <sub>2</sub>	T	WEIGHT (KGS)
5140-275-012-090	PSC32 x HBL12 - 90	109	90	75	31.75	32	M10 x 1.5P	0.55
5141-275-012-090	PSC40 x HBL12 - 90	114	90	68.4	31.75	36.85	M10 x 1.5P	0.64
5141-275-020-105	PSC40 x HBL20 - 105	129	105	85	38.1	40	M12 x 1.75P	0.82
5142-275-012-105	PSC50 x HBL12 - 105	135	105	82.1	31.75	38.04	M10 x 1.5P	0.98
5142-275-020-115	PSC50 x HBL20 - 115	145	115	94.04	38.1	45.3	M12 x 1.75P	0.99
5142-275-025-120	PSC50 x HBL25 - 120	150	120	100	44.45	50	M16 x 1.5P	1.48
5143-275-012-100	PSC63 x HBL12 - 100	138	100	69.9	31.75	36.9	M10 x 1.5P	1.26
5143-275-020-120	PSC63 x HBL20 - 120	158	120	91.4	38.1	45.2	M12 x 1.75P	1.47
5143-275-025-120	PSC63 x HBL25 - 120	158	120	92.6	44.45	51.6	M16 x 1.5P	1.60

## HLB Cutter for HBL Slim-Fit Collet Chuck



### Product information:

- ▶ When assembling with coolant through HLB cutter or SLC sealed collet, please change the screw into coolant screw, which is available to order separately.
- ▶ Balance: G2.5 25,000 rpm. Higher balancing grade and revolution can be done upon request but additional charge is needed.

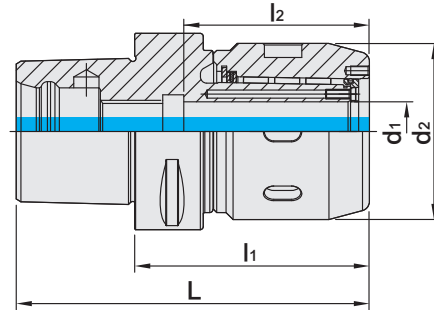
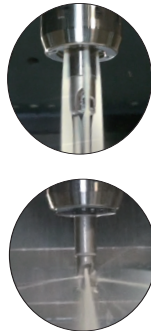
### Features:

- ▶ Two-face contact between collet taper, collet flange and the end of HBL tool holder, increases the rigidity of machining.
- ▶ Modular system, assembled with HLB tools.
- ▶ HBL drawbar clamping design strengthens the axial clamping force.

Spanner	Coolant Supply Unit	KEY	HLB CUTTER	SLC Collet	Screw
P.W-80	P.W-72	P.W-72	P.W-83~97	P.W-40~41	P.W-110

# PSC / MLD MULTI-LOCK MILLING CHUCK

## PSC / MLD 直式筒夾銑床夾頭



TW PAT NO. M447277  
TW PAT NO. M430337  
TW PAT NO. M451185  
CN PAT NO. ZL201220749784.4  
CH PAT NO. ZL201220749942.6

### METRIC

MODEL NO.	TYPE	L	l <sub>1</sub>	l <sub>2</sub>	d <sub>1</sub>	d <sub>2</sub>	WEIGHT (KGS)
5142-460-016-065	PSC50 x MLD16 - 65	95	65	56.7	16	48	1.00
5142-460-016-090	PSC50 x MLD16 - 90	120	90	56.7	16	48	1.50
5142-460-020-075	PSC50 x MLD20 - 75	105	75	59.3	20	56.5	1.20
5142-460-020-090	PSC50 x MLD20 - 90	120	90	59.3	20	56.5	1.40
5142-460-025-085	PSC50 x MLD25 - 85	115	85	58.2	25	60	1.60
5142-460-025-105	PSC50 x MLD25 - 105	135	105	58.2	25	60	1.80
5142-460-032-090	PSC50 x MLD32 - 90	120	90	71.7	32	71	1.90
5143-460-016-070	PSC63 x MLD16 - 70	108	70	56.7	16	48	1.20
5143-460-016-090	PSC63 x MLD16 - 90	128	90	56.7	16	48	1.40
5143-460-020-075	PSC63 x MLD20 - 75	113	75	59.3	20	56.5	1.40
5143-460-020-090	PSC63 x MLD20 - 90	128	90	59.3	20	56.5	1.60
5143-460-025-080	PSC63 x MLD25 - 80	118	80	58.2	25	60	1.70
5143-460-025-090	PSC63 x MLD25 - 90	128	90	58.2	25	60	1.90
5143-460-032-085	PSC63 x MLD32 - 85	123	85	71.7	32	71	2.20
5143-460-032-105	PSC63 x MLD32 - 105	143	105	71.7	32	71	2.40
5144-460-016-070	PSC80 x MLD16 - 70	118	70	56.7	16	48	2.30
5144-460-016-105	PSC80 x MLD16 - 105	153	105	56.7	16	48	2.50
5144-460-020-080	PSC80 x MLD20 - 80	128	80	59.3	20	56.5	2.60
5144-460-020-105	PSC80 x MLD20 - 105	153	105	59.3	20	56.5	2.80
5144-460-025-085	PSC80 x MLD25 - 85	133	85	58.2	25	60	2.80
5144-460-025-105	PSC80 x MLD25 - 105	153	105	58.2	25	60	3.10
5144-460-032-090	PSC80 x MLD32 - 90	138	90	71.7	32	71	2.90
5144-460-032-105	PSC80 x MLD32 - 105	153	105	71.7	32	71	3.10
5146-460-016-090	PSC100 x MLD16 - 90	150	90	56.7	16	48	4.08
5146-460-016-105	PSC100 x MLD16 - 105	165	105	56.7	16	48	4.31
5146-460-020-095	PSC100 x MLD20 - 95	155	95	59.3	20	56.5	4.68
5146-460-020-105	PSC100 x MLD20 - 105	165	105	59.3	20	56.5	4.82
5146-460-025-095	PSC100 x MLD25 - 95	155	95	58.2	25	60	4.51
5146-460-025-105	PSC100 x MLD25 - 105	165	105	58.2	25	60	4.69
5146-460-032-105	PSC100 x MLD32 - 105	165	105	71.1	32	71	4.71

### Features:

- ▶ The special slotted design of the internal hole increases the clamping force and decreases vibration, making this milling chuck set suitable for heavy-duty machining.
- ▶ Collet runout accuracy: HSC collet 5µm and SSC collet 20µm two options to choose from.
- ▶ After fastening, the nuts and tool holders contact tight to enhance the cutting rigidity and achieve dustproof purposes.
- ▶ Coolant options: through the center of the holder or cutter. Use a sealed cap and SR ring for coolant through the cutter.

### Product information:

- ▶ The pre-balance reaches G6.3 8,000 rpm. Higher balancing grade and revolution can be done upon request but additional charge is needed.

### Standard Accessory: • NUT

Collet	Sealed Cap	SR Sealed Ring	Coolant Supply Unit	Set Screw	Spanner	Spanner	KEY
P.W-45~46	P.W-65	P.W-66	P.W-72	P.W-107	P.W-79~80	P.W-81	P.W-72

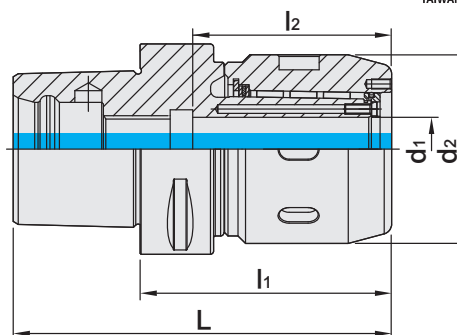


# PSC / MLD MULTI-LOCK MILLING CHUCK

## PSC / MLD 直式筒夾銑床夾頭



台灣精品 2007 台灣精品 2012  
TAIWAN EXCELLENCE TAIWAN EXCELLENCE



TW PAT NO. M447277  
TW PAT NO. M430337  
TW PAT NO. M451185  
CN PAT NO. ZL201220749784.4  
CH PAT NO. ZL201220749942.6

### INCHES

MODEL NO.	TYPE	L	l <sub>1</sub>	l <sub>2</sub>	d <sub>1</sub>	d <sub>2</sub>	WEIGHT (KGS)
5142-460-A40-250	PSC50 x MLD5/8" - 2.5"	3.681	2.5	2.23	0.625	1.889	1.00
5142-460-A40-350	PSC50 x MLD5/8" - 3.5"	4.681	3.5	2.23	0.625	1.889	1.50
5142-460-A48-300	PSC50 x MLD3/4" - 3"	4.181	3	2.34	0.75	2.224	1.20
5142-460-A48-350	PSC50 x MLD3/4" - 3.5"	4.681	3.5	2.34	0.75	2.224	1.40
5142-460-A64-335	PSC50 x MLD1" - 3.35"	4.531	3.35	2.49	1	2.362	1.60
5142-460-A64-413	PSC50 x MLD1" - 4.13"	5.314	4.13	2.49	1	2.362	1.80
5142-460-A72-350	PSC50 x MLD1-1/4" - 3.5"	4.681	3.5	2.8	1.25	2.795	1.90
5143-460-A40-275	PSC63 x MLD5/8" - 2.75"	4.246	2.75	2.23	0.625	1.889	1.20
5143-460-A40-350	PSC63 x MLD5/8" - 3.5"	4.996	3.5	2.23	0.625	1.889	1.40
5143-460-A48-300	PSC63 x MLD3/4" - 3"	4.496	3	2.34	0.75	2.224	1.40
5143-460-A48-350	PSC63 x MLD3/4" - 3.5"	4.996	3.5	2.34	0.75	2.224	1.60
5143-460-A64-315	PSC63 x MLD1" - 3.15"	4.645	3.15	2.49	1	2.362	1.70
5143-460-A64-350	PSC63 x MLD1" - 3.5"	4.996	3.5	2.49	1	2.362	1.90
5143-460-A72-335	PSC63 x MLD1-1/4" - 3.35"	4.846	3.35	2.8	1.25	2.795	2.20
5143-460-A72-413	PSC63 x MLD1-1/4" - 4.13"	5.626	4.13	2.8	1.25	2.795	2.40
5144-460-A40-275	PSC80 x MLD5/8" - 2.75"	4.639	2.75	2.23	0.625	1.889	2.30
5144-460-A40-413	PSC80 x MLD5/8" - 4.13"	6.019	4.13	2.23	0.625	1.889	2.50
5144-460-A48-315	PSC80 x MLD3/4" - 3.15"	5.039	3.15	2.34	0.75	2.224	2.60
5144-460-A48-413	PSC80 x MLD3/4" - 4.13"	6.019	4.13	2.34	0.75	2.224	2.80
5144-460-A64-335	PSC80 x MLD1" - 3.35"	5.239	3.35	2.49	1	2.362	2.80
5144-460-A64-413	PSC80 x MLD1" - 4.13"	6.019	4.13	2.49	1	2.362	3.10
5144-460-A72-350	PSC80 x MLD1-1/4" - 3.5"	5.389	3.5	2.8	1.25	2.795	2.90
5144-460-A72-413	PSC80 x MLD1-1/4" - 4.13"	6.019	4.13	2.8	1.25	2.795	3.10
5146-460-A40-350	PSC100xMLD5/8" - 3.5"	5.862	3.5	2.23	0.625	1.889	4.07
5146-460-A40-413	PSC100xMLD5/8" - 4.13"	6.492	4.13	2.23	0.625	1.889	4.32
5146-460-A48-375	PSC100xMLD3/4" - 3.75"	6.112	3.75	2.34	0.75	2.224	4.70
5146-460-A48-413	PSC100xMLD3/4" - 4.13"	6.492	4.13	2.34	0.75	2.224	4.82
5146-460-A64-400	PSC100xMLD1" - 4"	6.362	4	2.49	1	2.36	4.64
5146-460-A64-413	PSC100xMLD1" - 4.13"	6.492	4.13	2.49	1	2.36	4.70
5146-460-A72-400	PSC100xMLD1-1/4" - 4"	6.362	4	2.8	1.25	2.795	4.59
5146-460-A72-413	PSC100xMLD1-1/4" - 4.13"	6.492	4.13	2.8	1.25	2.795	4.65

### Features:

- ▶ The special slotted design of the internal hole increases the clamping force and decreases vibration, making this milling chuck set suitable for heavy-duty machining.
- ▶ Collet runout accuracy: HSC collet 5μm and SSC collet 20μm two options to choose from.
- ▶ After fastening, the nuts and tool holders contact tight to enhance the cutting rigidity and achieve dustproof purposes.
- ▶ Coolant options: through the center of the holder or cutter. Use a sealed cap and SR ring for coolant through the cutter.

### Product information:

- ▶ The pre-balance reaches G6.3 8,000 rpm. Higher balancing grade and revolution can be done upon request but additional charge is needed.

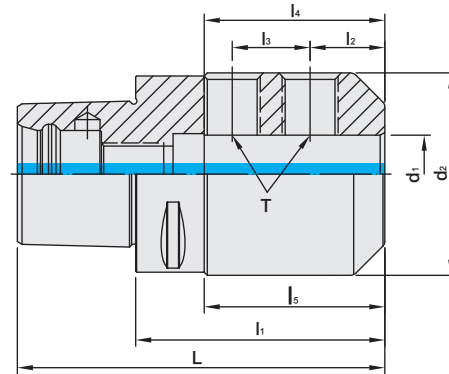
### Standard Accessory: • NUT

Collet	Sealed Cap	SR Sealed Ring	Coolant Supply Unit	Set Screw	Spanner	Spanner	KEY
P.W-45~46	P.W-65	P.W-66	P.W-72	P.W-107	P.W-79~80	P.W-81	P.W-72

# PSC / SLN SIDE LOCK END MILL HOLDER

PSC / SLN 側固式立銑刀桿

台灣精品 2012  
TAIWAN EXCELLENCE



## METRIC




MODEL NO.	TYPE	L	l <sub>1</sub>	l <sub>2</sub>	l <sub>3</sub>	l <sub>4</sub>	l <sub>5</sub>	d <sub>1</sub>	d <sub>2</sub>	T	WEIGHT (KGS)
5140-653-006-045	PSC32 x SLN6 - 45	64	45	18	-	36	29	6	25	M6	0.30
5140-653-008-045	PSC32 x SLN8 - 45	64	45	18	-	36	29.5	8	28	M8	0.30
5140-653-010-050	PSC32 x SLN10 - 50	69	50	20	-	29	35	10	35	M10	0.40
5140-653-012-055	PSC32 x SLN12 - 55	74	55	22.5	-	38	40	12	42	M12	0.30
5141-653-006-050	PSC40 x SLN6 - 50	74	50	18	-	35	25	6	25	M6	0.40
5141-653-008-050	PSC40 x SLN8 - 50	74	50	18	-	35	26	8	28	M8	0.40
5141-653-010-050	PSC40 x SLN10 - 50	74	50	20	-	39	27.5	10	35	M10	0.50
5141-653-012-055	PSC40 x SLN12 - 55	79	55	22.5	-	44	35	12	42	M12	0.60
5141-653-014-055	PSC40 x SLN14 - 55	79	55	22.5	-	39	35	14	44	M12	0.60
5141-653-016-055	PSC40 x SLN16 - 55	79	55	24	-	37	35	16	47	M14	0.70
5142-653-006-050	PSC50 x SLN6 - 50	80	50	18	-	38	25	6	25	M6	0.60
5142-653-008-050	PSC50 x SLN8 - 50	80	50	18	-	38	25	8	28	M8	0.70
5142-653-010-055	PSC50 x SLN10 - 55	85	55	20	-	43	30	10	35	M10	0.70
5142-653-012-060	PSC50 x SLN12 - 60	90	60	22.5	-	48	38	12	42	M12	0.90
5142-653-014-060	PSC50 x SLN14 - 60	90	60	22.5	-	44	37	14	44	M12	0.80
5142-653-016-060	PSC50 x SLN16 - 60	90	60	24	-	43	39	16	48	M14	1.00
5142-653-018-060	PSC50 x SLN18 - 60	90	60	24	-	45	-	18	50	M14	1.00
5142-653-020-060	PSC50 x SLN20 - 60	90	60	25	-	43	40	20	52	M16	1.00
5142-653-025-080	PSC50 x SLN25 - 80	110	80	24	25	58	60	25	65	M18	1.80

## Features:

- ▶ Internal hole tolerance: H5 (DIN-1835-B standard).
- ▶ The tolerance requirement of tool shank diameter is h6.
- ▶ Taking use of side lock screws to clamp tools with lateral flat surfaces. Good at heavy-duty machining.

## Product information:

- ▶ The pre-balance reaches G6.3 10,000 rpm. Higher balancing grade and revolution can be done upon request but additional charge is needed.

Coolant Supply Unit	Lock Screw	KEY
		
P.W-72	P.W-109	P.W-72

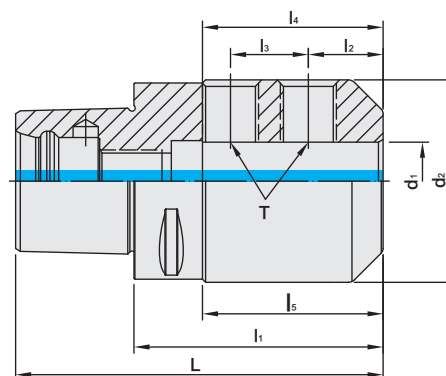


# PSC / SLN SIDE LOCK END MILL HOLDER

PSC / SLN 側固式立銑刀桿



台灣精品 2012  
TAIWAN EXCELLENCE



## METRIC




MODEL NO.	TYPE	L	l <sub>1</sub>	l <sub>2</sub>	l <sub>3</sub>	l <sub>4</sub>	l <sub>5</sub>	d <sub>1</sub>	d <sub>2</sub>	T	WEIGHT (KGS)
5143-653-006-055	PSC63 x SLN6 - 55	93	55	18	-	35	28	6	25	M6	0.90
5143-653-008-055	PSC63 x SLN8 - 55	93	55	18	-	39	28	8	28	M8	0.90
5143-653-010-060	PSC63 x SLN10 - 60	98	60	20	-	39	33	10	35	M10	1.00
5143-653-012-060	PSC63 x SLN12 - 60	98	60	22.5	-	44	33	12	42	M12	1.10
5143-653-014-060	PSC63 x SLN14 - 60	98	60	22.5	-	44	33	14	44	M12	1.10
5143-653-016-065	PSC63 x SLN16 - 65	103	65	24	-	47	40	16	48	M14	1.20
5143-653-018-065	PSC63 x SLN18 - 65	103	65	24	-	44	40	18	50	M14	1.20
5143-653-020-065	PSC63 x SLN20 - 65	103	65	25	-	49	40	20	52	M16	1.50
5143-653-025-080	PSC63 x SLN25 - 80	118	80	24	25	58	58	25	65	M18	1.90
5143-653-032-090	PSC63 x SLN32 - 90	128	90	24	28	63	68	32	72	M20	2.40
5143-653-040-100	PSC63 x SLN40 - 100	138	100	30	32	75	78	40	90	M20	3.70
5144-653-006-070	PSC80 x SLN6 - 70	118	70	18	-	35	35	6	25	M6	2.10
5144-653-008-070	PSC80 x SLN8 - 70	118	70	18	-	35	35	8	28	M8	2.10
5144-653-010-070	PSC80 x SLN10 - 70	118	70	20	-	39	35	10	35	M10	2.20
5144-653-012-070	PSC80 x SLN12 - 70	118	70	22.5	-	44	35	12	42	M12	2.20
5144-653-014-070	PSC80 x SLN14 - 70	118	70	22.5	-	44	35	14	44	M12	2.30
5144-653-016-070	PSC80 x SLN16 - 70	118	70	24	-	47	35	16	48	M14	2.30
5144-653-018-070	PSC80 x SLN18 - 70	118	70	24	-	44	35	18	50	M14	2.30
5144-653-020-070	PSC80 x SLN20 - 70	118	70	25	-	49	37	20	52	M16	2.30
5144-653-025-090	PSC80 x SLN25 - 90	138	90	24	25	58	59	25	65	M18	2.40
5144-653-032-095	PSC80 x SLN32 - 95	143	95	24	28	63	63.5	32	72	M20	2.90
5144-653-040-110	PSC80 x SLN40 - 110	158	110	30	32	75	79.5	40	90	M20	4.50
5144-653-050-120	PSC80 x SLN50 - 120	168	120	35	35	78	90	50	98	M24	5.50
5146-653-020-090	PSC100 x SLN20 - 90	150	90	25	-	49	44	20	52	M16	3.91
5146-653-025-105	PSC100 x SLN25 - 105	165	105	24	25	58	64	25	65	M18	4.56
5146-653-032-110	PSC100 x SLN32 - 110	170	110	24	28	63	69	32	72	M20	4.93
5146-653-040-115	PSC100 x SLN40 - 115	175	115	30	32	75	78	40	90	M20	6.1
5146-653-050-120	PSC100 x SLN50 - 120	180	120	35	35	78	84	50	98	M24	6.4

### Features:

- ▶ Internal hole tolerance: H5 (DIN-1835-B standard).
- ▶ The tolerance requirement of tool shank diameter is h6.
- ▶ Taking use of side lock screws to clamp tools with lateral flat surfaces. Good at heavy-duty machining.

### Product information:

- ▶ The pre-balance reaches G6.3 10,000 rpm. Higher balancing grade and revolution can be done upon request but additional charge is needed.

Coolant Supply Unit	Lock Screw	KEY
 P.W-72	 P.W-109	 P.W-72

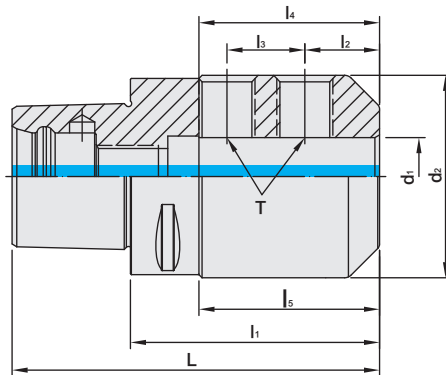


# PSC / SLN SIDE LOCK END MILL HOLDER

## PSC / SLN 側固式立銑刀桿



台灣精品 2012  
TAIWAN EXCELLENCE



### INCHES




MODEL NO.	TYPE	L	l <sub>1</sub>	l <sub>2</sub>	l <sub>3</sub>	l <sub>4</sub>	l <sub>5</sub>	d <sub>1</sub>	d <sub>2</sub>	T	WEIGHT (KGS)
5140-653-A16-177	PSC32 x SLN1/4" - 1.77"	2.52	1.77	0.63	-	1.38	0.984	0.25	0.78	1/4 - 28	0.30
5140-653-A20-177	PSC32 x SLN5/16" - 1.77"	2.52	1.77	0.63	-	1.38	1.06	0.3125	0.88	5/16 - 24	0.30
5140-653-A24-197	PSC32 x SLN3/8" - 1.97"	2.72	1.97	0.75	-	1.38	1.34	0.375	1	3/8 - 24	0.40
5140-653-A32-217	PSC32 x SLN1/2" - 2.17"	2.91	2.17	0.875	-	1.732	1.57	0.5	1.25	7/16 - 20	0.30
5141-653-A16-197	PSC40 x SLN1/4" - 1.97"	2.91	1.97	0.63	-	1.38	0.984	0.25	0.78	1/4 - 28	0.40
5141-653-A20-197	PSC40 x SLN5/16" - 1.97"	2.91	1.97	0.6	-	1.38	1.06	0.3125	0.88	5/16 - 24	0.40
5141-653-A24-197	PSC40 x SLN3/8" - 1.97"	2.91	1.97	0.75	-	1.38	1.08	0.375	1	3/8 - 24	0.50
5141-653-A32-217	PSC40 x SLN1/2" - 2.17"	3.11	2.17	0.875	-	1.732	1.34	0.5	1.25	7/16 - 20	0.60
5141-653-A36-217	PSC40 x SLN9/16" - 2.17"	3.11	2.17	0.937	-	1.81	1.38	0.5625	1.75	1/2 - 20	0.60
5141-653-A40-217	PSC40 x SLN5/8" - 2.17"	3.11	2.17	0.937	-	1.73	1.34	0.625	1.5	1/2 - 20	0.70
5142-653-A16-200	PSC50 x SLN1/4" - 2"	3.18	2	0.63	-	1.38	1	0.25	0.78	1/4 - 28	0.60
5142-653-A20-200	PSC50 x SLN5/16" - 2"	3.18	2	0.6	-	1.38	1.02	0.3125	0.88	5/16 - 24	0.70
5142-653-A24-217	PSC50 x SLN3/8" - 2.17"	3.35	2.17	0.75	-	1.38	1.18	0.375	1	3/8 - 24	0.70
5142-653-A32-236	PSC50 x SLN1/2" - 2.36"	3.54	2.36	0.875	-	1.732	1.38	0.5	1.25	7/16 - 20	0.90
5142-653-A36-236	PSC50 x SLN9/16" - 2.36"	3.54	2.36	0.937	-	1.77	1.46	0.5625	1.75	1/2 - 20	0.80
5142-653-A40-236	PSC50 x SLN5/8" - 2.36"	3.54	2.36	0.937	-	1.69	1.46	0.625	1.5	1/2 - 20	1.00
5142-653-A48-236	PSC50 x SLN3/4" - 2.36"	3.54	2.36	1	-	1.69	1.53	0.75	1.75	5/8 - 18	1.00
5142-653-A64-315	PSC50 x SLN1" - 3.15"	4.33	3.15	1.125	1	2.559	2.36	1	2	3/4 - 16	1.00
5143-653-A16-217	PSC63 x SLN1/4" - 2.17"	3.66	2.17	0.63	-	1.38	1.102	0.25	0.78	1/4 - 28	1.80
5143-653-A20-217	PSC63 x SLN5/16" - 2.17"	3.66	2.17	0.6	-	1.38	1.102	0.3125	0.88	5/16 - 24	0.90
5143-653-A24-236	PSC63 x SLN3/8" - 2.36"	3.86	2.36	0.75	-	1.38	1.299	0.375	1	3/8 - 24	0.90
5143-653-A32-236	PSC63 x SLN1/2" - 2.36"	3.86	2.36	0.875	-	1.732	1.299	0.5	1.25	7/16 - 20	1.00
5143-653-A36-236	PSC63 x SLN9/16" - 2.36"	3.86	2.36	0.937	-	1.85	1.338	0.5625	1.75	1/2 - 20	1.10
5143-653-A40-256	PSC63 x SLN5/8" - 2.56"	4.06	2.56	0.937	-	1.85	1.496	0.625	1.5	1/2 - 20	1.10
5143-653-A48-256	PSC63 x SLN3/4" - 2.56"	4.06	2.56	1	-	1.929	1.496	0.75	1.75	5/8 - 18	1.20
5143-653-A64-315	PSC63 x SLN1" - 3.15"	4.65	3.15	1.125	-	2.559	2.283	1	2	3/4 - 16	1.20
5143-653-A72-354	PSC63 x SLN1-1/4" - 3.54"	5.04	3.54	1.125	1	2.559	2.677	1.25	2.5	3/4 - 16	1.50
5143-653-A80-394	PSC63 x SLN1-1/2" - 3.94"	5.43	3.94	1.125	1	2.56	3.07	1.5	2.5	3/4 - 16	1.90

### Features:

- ▶ Internal hole tolerance: H5 (DIN-1835-B standard).
- ▶ The tolerance requirement of tool shank diameter is h6.
- ▶ Taking use of side lock screws to clamp tools with lateral flat surfaces. Good at heavy-duty machining.

### Product information:

- ▶ The pre-balance reaches G6.3 10,000 rpm. Higher balancing grade and revolution can be done upon request but additional charge is needed.

Coolant Supply Unit	Lock Screw	KEY
 P.W-72	 P.W-109	 P.W-72



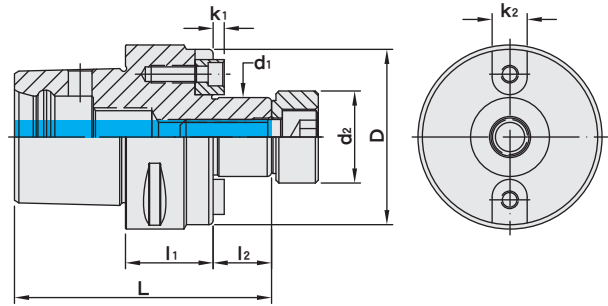
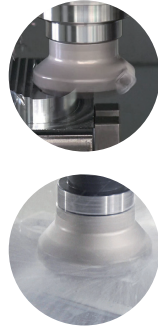
# PSC FACE MILL ARBOR

## FMA TYPE

PSC / FMA 平面銑刀桿



台灣精品 2012  
TAIWAN EXCELLENCE



INCHES

MODEL NO.	TYPE	L	l <sub>1</sub>	l <sub>2</sub>	d <sub>1</sub>	d <sub>2</sub>	D	k <sub>1</sub>	k <sub>2</sub>	WEIGHT (KGS)
5142-151-A48-150	PSC50 x FMA3/4" - 1.5"	3.37	1.5	0.69	0.75	0.875	1.69	0.19	0.31	0.50
5142-151-A64-157	PSC50 x FMA1" - 1.57"	3.44	1.57	0.69	1	1.187	2.19	0.19	0.375	0.80
5143-151-A64-200	PSC63 x FMA1" - 2"	4.19	2	0.69	1	1.187	2.19	0.19	0.375	0.90
5143-151-A72-200	PSC63 x FMA1-1/4" - 2"	4.19	2	0.69	1.25	1.5	2.75	0.25	0.5	1.00
5143-151-A80-200	PSC63 x FMA1-1/2" - 2"	4.49	2	0.99	1.5	1.75	2.95	0.35	0.63	1.60
5144-151-A48-118	PSC80 x FMA3/4" - 1.18"	3.76	1.18	0.69	0.75	0.875	3.15	0.19	0.31	1.70
5144-151-A64-118	PSC80 x FMA1" - 1.18"	3.76	1.18	0.69	1	1.187	3.15	0.19	0.375	1.80
5144-151-A72-118	PSC80 x FMA1-1/4" - 1.18"	3.76	1.18	0.69	1.25	1.5	3.15	0.25	0.5	2.00
5144-151-A80-236	PSC80 x FMA1-1/2" - 2.36"	5.24	2.36	0.99	1.5	1.75	2.95	0.32	0.63	2.10

**Features:**

- ▶ Tolerance of d<sub>1</sub> the connection part with cutter: h6, which is good for less chatter and longer cutter life.
- ▶ Standard screw attached is w/o coolant hole.
- ▶ To use with face mill cutters with coolant holes, the standard screw has to be changed into the screw with coolant flute, which is available to order separately.

Coolant Supply Unit	Screw	KEY
		
P.W-72	P.W-109	P.W-72

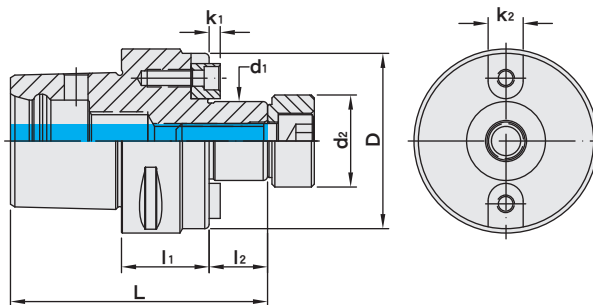
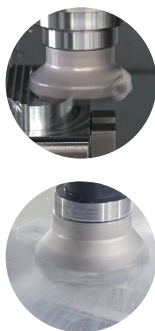
# PSC FACE MILL ARBOR

## FMB TYPE

### PSC / FMB 平面銑刀桿



台灣精品 2012  
TAIWAN EXCELLENCE



#### METRIC

MODEL NO.	TYPE	L	l <sub>1</sub>	l <sub>2</sub>	D	d <sub>1</sub>	d <sub>2</sub>	k <sub>1</sub>	k <sub>2</sub>	WEIGHT (KGS)
5140-153-016-030	PSC32 x FMB16 - 30	66	30	17	32	16	-	5	8	0.30
5141-153-016-032	PSC40 x FMB16 - 32	73	32	17	34	16	-	5	8	0.30
5141-153-016-055	PSC40 x FMB16 - 55	96	55	17	34	16	-	5	8	0.40
5141-153-022-025	PSC40 x FMB22 - 25	68	25	19	40	22	26	4.8	10	0.40
5141-153-022-055	PSC40 x FMB22 - 55	98	55	19	48	22	26	4.8	10	0.70
5142-153-016-035	PSC50 x FMB16 - 35	82	35	17	34	16	-	5	8	0.60
5142-153-016-070	PSC50 x FMB16 - 70	117	70	17	34	16	-	5	8	0.70
5142-153-022-025	PSC50 x FMB22 - 25	74	25	19	48	22	26	4.8	10	0.60
5142-153-022-070	PSC50 x FMB22 - 70	119	70	19	48	22	26	4.8	10	1.00
5142-153-027-025	PSC50 x FMB27 - 25	75	25	20	50	27	31.5	5.8	12	0.70
5142-153-032-040	PSC50 x FMB32 - 40	92	40	22	63	32	41	7	14	1.20
5143-153-016-040	PSC63 x FMB16 - 40	95	40	17	34	16	-	5	8	0.90
5143-153-022-040	PSC63 x FMB22 - 40	97	40	19	48	22	26	4.8	10	0.90
5143-153-027-030	PSC63 x FMB27 - 30	88	30	20	60	27	31.5	5.8	12	1.00
5143-153-032-045	PSC63 x FMB32 - 45	105	45	22	78	32	41	6.8	14	1.60
5143-153-040-045	PSC63 x FMB40 - 45	108	45	25	80	40	48	8	16	1.60
5144-153-016-050	PSC80 x FMB16 - 50	115	50	17	34	16	-	5	8	1.80
5144-153-022-030	PSC80 x FMB22 - 30	97	30	19	48	22	26	4.8	10	1.80
5144-153-027-030	PSC80 x FMB27 - 30	98	30	20	60	27	31.5	5.8	12	2.00
5144-153-032-030	PSC80 x FMB32 - 30	100	30	22	78	32	41	7	14	2.10
5144-153-040-030	PSC80 x FMB40 - 30	103	30	25	80	40	48	8	16	2.10
5144-153-060-060	PSC80 x FMB60 - 60	148	60	40	129	60	-	12.4	25.4	5.30
5145-153-040-040	PSC80X x FMB40 - 40	113	40	25	80	40	48	8	16	3.20
5145-153-060-070	PSC80X x FMB60 - 70	158	70	40	129	60	-	12.4	25.4	6.90

#### Features:

- ▶ Metric size.
- ▶ Tolerance of d<sub>1</sub> the connection part with cutter: h6, which is good for less chatter and longer cutter life.
- ▶ Standard screw attached is w/o coolant hole.
- ▶ To use with face mill cutters with coolant holes, the standard screw has to be changed into the screw with coolant flute, which is available to order separately.

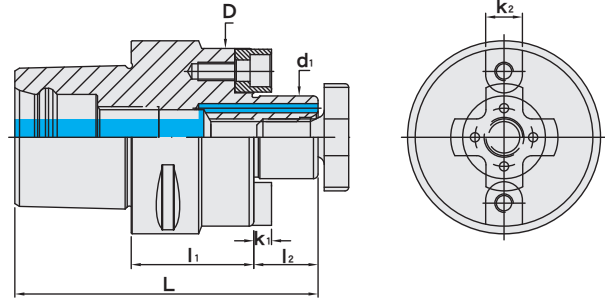
Coolant Supply Unit	Screw	KEY
 P.W-72	 P.W-109	 P.W-72



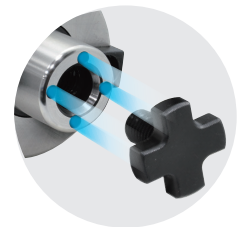
# PSC FACE MILL ARBOR

## FMC TYPE

PSC / FMC 平面銑刀桿


 台灣精品 2012  
 TAIWAN EXCELLENCE


MODEL NO.	TYPE	L	l <sub>1</sub>	l <sub>2</sub>	D	d <sub>1</sub>	k <sub>1</sub>	k <sub>2</sub>	WEIGHT (KGS)
5140-157-016-030	PSC32 x FMC16 - 30	66	30	17	38	16	5	8	0.30
5141-157-016-035	PSC40 x FMC16 - 35	76	35	17	38	16	5	8	0.30
5141-157-022-040	PSC40 x FMC22 - 40	97	40	19	48	22	4.8	10	0.60
5142-157-016-035	PSC50 x FMC16 - 35	82	35	17	38	16	5	8	0.70
5142-157-022-040	PSC50 x FMC22 - 40	89	40	19	48	22	4.8	10	0.60
5142-157-027-040	PSC50 x FMC27 - 40	91	40	21	58	27	5.8	12	0.70
5142-157-032-040	PSC50 x FMC32 - 40	94	40	24	78	32	6.8	14	1.20
5143-157-016-035	PSC63 x FMC16 - 35	90	35	17	38	16	5	8	0.90
5143-157-022-040	PSC63 x FMC22 - 40	97	40	19	48	22	4.8	10	0.90
5143-157-027-040	PSC63 x FMC27 - 40	99	40	21	58	27	5.8	12	0.90
5143-157-032-040	PSC63 x FMC32 - 40	102	40	24	78	32	6.8	14	1.00
5143-157-040-045	PSC63 x FMC40 - 45	110	45	27	89	40	7.9	16	1.60
5144-157-027-050	PSC80 x FMC27 - 50	119	50	21	58	27	5.8	12	1.80
5144-157-032-050	PSC80 x FMC32 - 50	122	50	24	78	32	6.8	14	2.00
5144-157-040-055	PSC80 x FMC40 - 55	130	55	27	89	40	7.9	16	2.10
5146-157-022-075	PSC100 x FMC22 - 75	154	75	19	48	22	4.8	10	4.70
5146-157-027-075	PSC100 x FMC27 - 75	154	75	21	58	27	5.8	12	4.80
5146-157-032-075	PSC100 x FMC32 - 75	154	75	24	78	32	6.8	14	5.30
5146-157-040-075	PSC100 x FMC40 - 75	154	75	27	89	40	7.9	16	5.50



### Features:

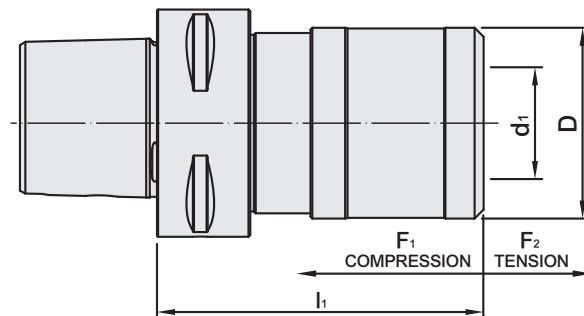
- ▶ With four coolant holes on the face of tool holder to match with face mill cutters with coolant holes.
- ▶ Tolerance of d<sub>1</sub> the connection part with cutter: h6, which is good for less chatter and longer cutter life

Nut	Coolant Supply Unit	Spanner	KEY
P.W-74	P.W-72	P.W-74	P.W-72

# PSC / QTC QUICK CHANGE TAPPING CHUCK

With length compensation on tension and compression

PSC / QTC 快換式扭力攻牙刀桿 [伸縮緩衝型]



MODEL NO.	TYPE	TAPPING COLLET	TAPPING CAPACITY	COMPENSATION		l <sub>1</sub>	D	d <sub>1</sub>	WEIGHT (KGS)
				F <sub>1</sub>	F <sub>2</sub>				
5140-580-001-080	PSC32 x QTC1 - 80	TCS - 1B	M3 - M14	7.5	7.5	80	36	19	0.4
5141-580-001-080	PSC40 x QTC1 - 80	TCS - 1B	M3 - M14	7.5	7.5	80	36	19	0.7
5141-580-002-110	PSC40 x QTC2 - 110	TCS - 2B	M8 - M24	12.5	12.5	110	53	31	1.3
5142-580-001-080	PSC50 x QTC1 - 80	TCS - 1B	M3 - M14	7.5	7.5	80	36	19	1.0
5142-580-002-115	PSC50 x QTC2 - 115	TCS - 2B	M8 - M24	12.5	12.5	115	53	31	1.7
5143-580-001-090	PSC63 x QTC1 - 90	TCS - 1B	M3 - M14	7.5	7.5	90	36	19	1.3
5143-580-002-120	PSC63 x QTC2 - 120	TCS - 2B	M8 - M24	12.5	12.5	120	53	31	2.4
5143-580-003-170	PSC63 x QTC3 - 170	TCS - 3B	M14 - M36	20	20	170	78	48	3.4
5144-580-001-085	PSC80 x QTC1 - 85	TCS - 1B	M3 - M14	7.5	7.5	85	36	19	2.4
5144-580-002-110	PSC80 x QTC2 - 110	TCS - 2B	M8 - M24	12.5	12.5	110	53	31	3.3
5144-580-003-160	PSC80 x QTC3 - 160	TCS - 3B	M14 - M36	20	20	160	78	48	3.7

**Features:**

- ▶ Quick and easy tool change in seconds!
- ▶ Absorb any inaccuracies between the rotating spindle and the moving Z-axis, increasing tap life and the improving tapping quality.
- ▶ Most commonly used for old CNC machines without rigid tapping. The length compensation prevents oversized threads and helps prevent tap breakage from excessive torque or over travel when the tap hits the bottom of the hole.

**Synchronized Tapping Holder:**

- ▶ Ideal for everyday tapping, high speed and high production tapping for modern CNC machines capable of rigid tapping.
- ▶ Also ideal for high-end tapping applications in modern CNC machines, such as: small taps or difficult materials resulting in high torque loads.

**Tapping Collet**



P.A-52~54

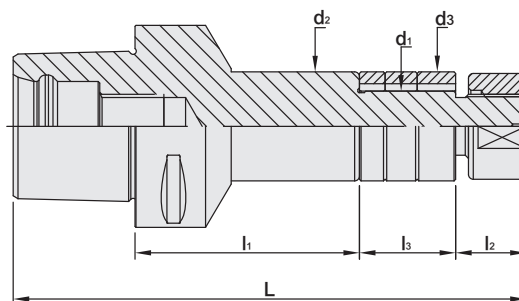


# PSC / SCA SIDE CUTTER ADAPTER

## PSC / SCA 側銑刀桿



台灣精品 2012  
TAIWAN EXCELLENCE



MODEL NO.	TYPE	L	l <sub>1</sub>	l <sub>2</sub>	l <sub>3</sub>	d <sub>1</sub>	d <sub>2</sub>	d <sub>3</sub>	WEIGHT (KGS)
5140-649-016-020	PSC32 x SCA16 - 20	85	20	16	30	16	26	26	0.20
5141-649-016-025	PSC40 x SCA16 - 25	95	25	16	30	16	26	26	0.30
5141-649-022-025	PSC40 x SCA22 - 25	101	25	22	30	22	34	34	0.40
5141-649-027-025	PSC40 x SCA27 - 25	107	25	28	30	27	41	40	0.60
5142-649-016-025	PSC50 x SCA16 - 25	101	25	16	30	16	26	26	0.60
5142-649-022-025	PSC50 x SCA22 - 25	107	25	22	30	22	34	34	0.70
5142-649-027-025	PSC50 x SCA27 - 25	113	25	28	30	27	41	40	0.80
5142-649-032-025	PSC50 x SCA32 - 25	117	25	32	30	32	47	46	0.90
5143-649-016-060	PSC63 x SCA16 - 60	144	60	16	30	16	26	26	0.90
5143-649-022-070	PSC63 x SCA22 - 70	160	70	22	30	22	34	34	1.00
5143-649-027-090	PSC63 x SCA27 - 90	186	90	28	30	27	41	40	1.20
5143-649-032-085	PSC63 x SCA32 - 85	185	85	32	30	32	47	46	1.40
5144-649-016-040	PSC80 x SCA16 - 40	134	40	16	30	16	26	26	1.80
5144-649-022-040	PSC80 x SCA22 - 40	140	40	22	30	22	34	34	2.00
5144-649-027-030	PSC80 x SCA27 - 30	136	30	28	30	27	41	40	2.10
5144-649-032-030	PSC80 x SCA32 - 30	140	30	32	30	32	47	46	2.20
5144-649-040-030	PSC80 x SCA40 - 30	148	30	40	30	40	55	55	2.50

### Features:

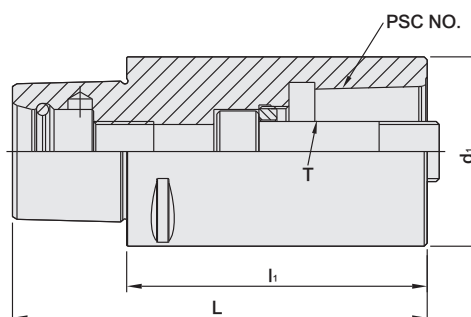
- ▶ Used with side milling cutter.
- ▶ Attached with a nut (DIN-2082-1) and bushes (DIN-2084-B).

# PSC EXTENSION ADAPTER FOR SAME DIAMETER

## PSC 等徑套筒



台灣精品 2012  
TAIWAN EXCELLENCE



MODEL NO.	TYPE	PSC NO.	L	l <sub>1</sub>	d <sub>1</sub>	T	MAX. TORQUE		WEIGHT (KGS)
							Nm	ft-lbs	
5140-013-140-060	PSC32 x PSC32 - 60	PSC32	79	60	32	M12 x 1.5P	45	33	0.40
5140-013-140-080	PSC32 x PSC32 - 80	PSC32	99	80	32	M12 x 1.5P	45	33	0.50
5141-013-141-060	PSC40 x PSC40 - 60	PSC40	84	60	40	M14 x 1.5P	55	40	0.50
5141-013-141-080	PSC40 x PSC40 - 80	PSC40	104	80	40	M14 x 1.5P	55	40	0.70
5142-013-142-080	PSC50 x PSC50 - 80	PSC50	110	80	50	M16 x 1.5P	95	70	1.10
5142-013-142-100	PSC50 x PSC50 - 100	PSC50	130	100	50	M16 x 1.5P	95	70	1.40
5143-013-143-080	PSC63 x PSC63 - 80	PSC63	118	80	63	M20 x 2.0P	170	125	2.00
5143-013-143-100	PSC63 x PSC63 - 100	PSC63	138	100	63	M20 x 2.0P	170	125	2.20
◆ 5144-013-144-065	PSC80 x PSC80 - 65	PSC80	113	65	80	M20 x 2.0P	170	125	3.10
5144-013-144-100	PSC80 x PSC80 - 100	PSC80	148	100	80	M20 x 2.0P	170	125	3.60
5144-013-144-125	PSC80 x PSC80 - 125	PSC80	173	125	80	M20 x 2.0P	170	125	4.60
5145-013-145-100	PSC80X x PSC80X - 100	PSC80X	148	100	100	M20 x 2.0P	170	125	5.80
5146-013-146-200	PSC100 x PSC100 - 200	PSC100	260	200	100	M24 x 2.0P	380	277	10.6

### Features:

- ▶ Convert the machine taper for use with different taper types or taper sizes of tool holders, or offer great flexibility by extending the tooling length.

### Product information:

- ▶ ◆ marked model means only for segment clamping, not for bolt clamping.



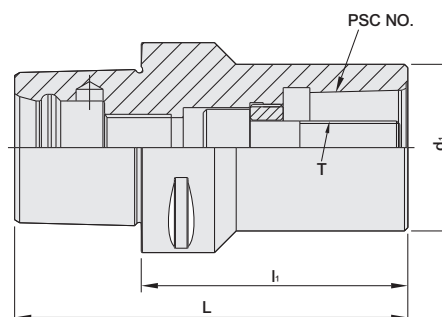
# PSC EXTENSION ADAPTER

## FOR DIFFERENT DIAMETER

### PSC 異徑套筒



台灣精品 2012  
TAIWAN EXCELLENCE



MODEL NO.	TYPE	NO.	L	l <sub>1</sub>	d <sub>1</sub>	T	MAX. TORQUE		WEIGHT (KGS)
							Nm	ft-lbs	
5141-013-140-055	PSC40 x PSC32 - 55	PSC32	79	55	32	M12 x 1.5P	45	33	0.50
5141-013-140-070	PSC40 x PSC32 - 70	PSC32	94	70	32	M12 x 1.5P	45	33	0.60
5142-013-140-060	PSC50 x PSC32 - 60	PSC32	90	60	32	M12 x 1.5P	45	33	0.60
5142-013-141-065	PSC50 x PSC40 - 65	PSC40	95	65	40	M14 x 1.5P	55	40	0.80
5142-013-141-085	PSC50 x PSC40 - 85	PSC40	115	85	40	M14 x 1.5P	55	40	1.10
5143-013-140-070	PSC63 x PSC32 - 70	PSC32	108	70	32	M12 x 1.5P	45	33	1.10
5143-013-141-080	PSC63 x PSC40 - 80	PSC40	118	80	40	M14 x 1.5P	55	40	1.20
5143-013-142-080	PSC63 x PSC50 - 80	PSC50	118	80	50	M16 x 1.5P	95	70	1.50
5143-013-142-110	PSC63 x PSC50 - 110	PSC50	148	110	50	M16 x 1.5P	95	70	2.20
5144-013-140-060	PSC80 x PSC32 - 60	PSC32	108	60	32	M12 x 1.5P	45	33	1.70
5144-013-141-070	PSC80 x PSC40 - 70	PSC40	118	70	40	M14 x 1.5P	55	40	1.90
◆ 5144-013-142-045	PSC80 x PSC50 - 45	PSC50	93	45	50	M16 x 1.5P	95	70	1.50
5144-013-142-080	PSC80 x PSC50 - 80	PSC50	128	80	50	M16 x 1.5P	95	70	2.20
◆ 5144-013-143-055	PSC80 x PSC63 - 55	PSC63	103	55	63	M20 x 2.0P	170	125	2.30
5144-013-143-080	PSC80 x PSC63 - 80	PSC63	128	80	63	M20 x 2.0P	170	125	2.50
5144-013-143-120	PSC80 x PSC63 - 120	PSC63	168	120	63	M20 x 2.0P	170	125	4.00
◆ 5145-013-143-055	PSC80X x PSC63 - 55	PSC63	103	55	63	M20 x 2.0P	170	125	3.00
5145-013-143-080	PSC80X x PSC63 - 80	PSC63	128	80	63	M20 x 2.0P	170	125	3.40
◆ 5145-013-144-065	PSC80X x PSC80 - 65	PSC80	113	65	80	M20 x 2.0P	170	125	4.00
◆ 5145-013-144-100	PSC80X x PSC80 - 100	PSC80	148	100	80	M20 x 2.0P	170	125	4.40
◆ 5145-013-144-150	PSC80X x PSC80 - 150	PSC80	198	150	80	M20 x 2.0P	170	125	5.20
5146-013-143-200	PSC100 x PSC63 - 200	PSC63	260	200	63	M20 x 2.0P	170	125	6.20
5146-013-144-200	PSC100 x PSC80 - 200	PSC80	260	200	80	M20 x 2.0P	170	125	8.18

#### Features:

- ▶ Convert the machine taper for use with different taper types or taper sizes of tool holders, or offer great flexibility by extending the tooling length.

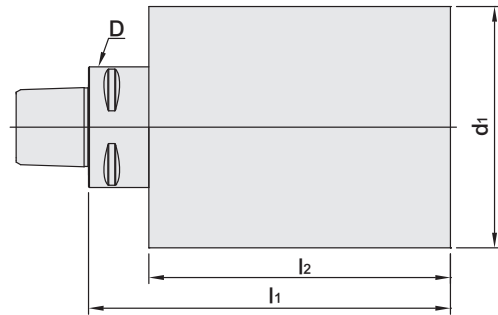
#### Product information:

- ▶ ◆ marked models means only for segment clamping, not for bolt clamping.



# PSC BLANK

## PSC 素材



MODEL NO.	TYPE	D	d <sub>1</sub>	l <sub>1</sub>	l <sub>2</sub>	WEIGHT (KGS)
5140-001-032-090	PSC32 x Ø32 - 90	32	32	90	-	0.53
5140-001-060-090	PSC32 x Ø60 - 90	32	60	90	75	1.65
5141-001-040-120	PSC40 x Ø40 - 120	40	40	120	-	1.30
5141-001-080-120	PSC40 x Ø80 - 120	40	80	120	100	4.12
5142-001-050-150	PSC50 x Ø50 - 150	50	50	150	-	2.38
5142-001-095-150	PSC50 x Ø95 - 150	50	95	150	130	7.60
5143-001-063-180	PSC63 x Ø63 - 180	63	63	180	-	4.56
5143-001-120-180	PSC63 x Ø120 - 180	63	120	180	158	14.5
5144-001-080-200	PSC80 x Ø80 - 200	80	80	200	-	8.30
5144-001-145-200	PSC80 x Ø145 - 200	80	145	200	170	23.3
5145-001-145-200	PSC80X x Ø145 - 200	100	145	200	168	23.2
5146-001-100-100	PSC100 x Ø100 - 100	100	100	100	64	7.11
5146-001-100-200	PSC100 x Ø100 - 200	100	100	200	164	13.155
5146-001-150-100	PSC100 x Ø150 - 100	100	150	100	64	11.949
5146-001-150-200	PSC100 x Ø150 - 200	100	150	200	164	25.556
5146-001-150-300	PSC100 x Ø150 - 300	100	150	300	264	39.163
5146-001-200-100	PSC100 x Ø200 - 100	100	200	100	64	18.721

### Features:

- Blanks can be machined according to customer demands. It is not recommended to do heat treatment after machining.

