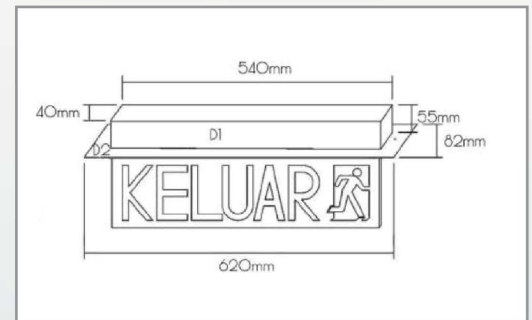
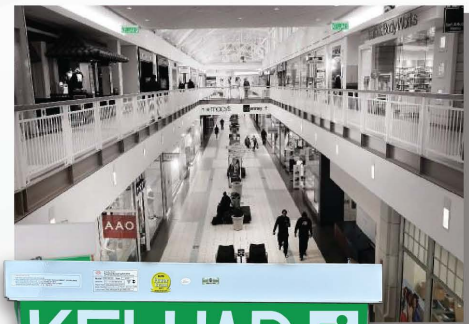




RECESS EMERGENCY KELUAR SIGN

Model	TR218C
Lamp-Mains "On"	16 x 0.2W SMD LED
Lamp-Mains "Off"	16 x 0.2W SMD LED
Battery Type	Sealed Nickel- Cadmium Battery
Weight	1.3 kg
Dimension KELUAR KELUAR Reces	538(L)mm x 198(W)mm x 125(H)mm D1 - 540(L)mm x 40(W)mm x 55(H)mm D2 - 620(L)mm x 82(W)mm
Input Voltage	240V ±10%, 50Hz
Lamp Used	SMD LED
Power Consumption	<6.3VA
Rated Duration	>3 Hours
Mode of Operation	Maintained
Housing	Metal Casing Finish In Epoxy Powder Coating
Charging Monitor	Red LED Indicates Battery Charging
Mode of Operation	Maintained
Projection Rating	IP20
Safety Feature	Low Voltage Cut-off to Prevent Over Discharge of the Battery
Mounting	Wall or Ceiling Mounting
Warranty	1 Year from the Date of Delivery
Certified Compliance	MS 983 : 2004 MS 619-2-22 : 2012 MS IEC 60598-1 : 2012 BOMBA APPROVED



TR218C

Pictogram	Recess Single Sided	Recess Double Sided
	TR218C/R (KM)	TR218C/RD (KM)
	TR218C/R (KLR)	TR218C/RD (KLR)
	TR218C/R (KLR)	TR218C/RD (KLR)
	TR218C/R (LRA)	TR218C/RD (LRA)

- Quality Assured by Full SIRIM Licence in Malaysia since 1992.
- Approved by Director General of Fire Service in Malaysia.
- Approved by Standard & Industrial Research Institute of Malaysia (SIRIM).
- Approved by Chief Electrical Inspector of Malaysia.
- Complies Fully with Uniform Building By-Law Regulations in Malaysia.

Note: Due to continuous development and improvement, our company reserve the right to change specification without notice

