

DOOR BELL

PRESTIGETM

● **LET THE MUSIC KNOCK YOUR DOOR**



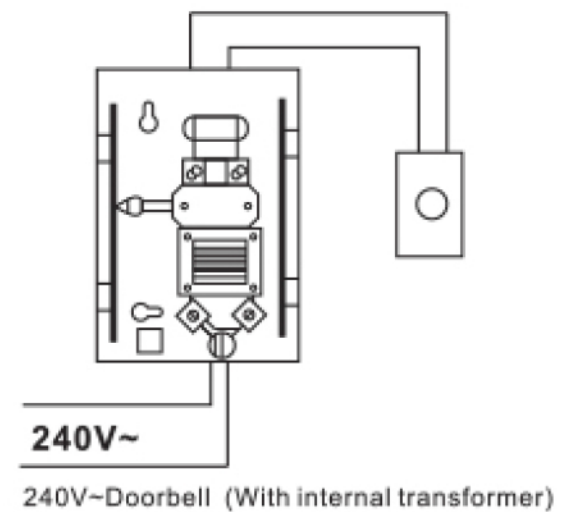
DOOR BELL

PRODUCT FEATURE

- Wired design, easy to install
- Low power consumption
- Ideal for homes, offices, factories, guest rooms in hotel etc.
- It also can be used for message notifying, alarms for patients and elderly.
- Mechanical striking function creating a Ding Dong sound effects.

Technical Parameter:

1. Working voltage: AC 240V/50Hz
2. Power consumption: AC < 2W
3. Music: Ding Dong (metal striking sound)



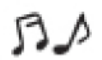
Energy saving



Elegant design



Easy to install



Ding Dong



PLS-TDB-711



PLS-TDB-722



PLS-TDB-733