

## BARE BATTEN

Bare channel series is designed for general purpose applications with main emphasis on reliability, robustness and versatility.

- Heavy gauged fully welded construction and die-formed
- Metal End Caps for absolute batten rigidity
- BESA fixing holes for easy mounting

*\* Picture shown is for illustration purpose only*

### DESCRIPTION

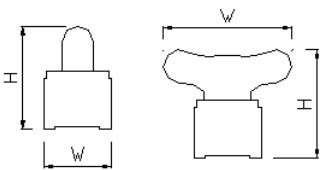
Ordering Model	W (mm)	L (mm)	H (mm)	LED Tube
GLC 120/LE/M/LED/S	52	610	74	1 x 2ft
GLC 140/LE/M/LED/S	52	1220	74	1 x 4ft
GLC 220/LE/M/TH/LED/S	105	610	81	2 x 2ft
GLC 240/LE/M/TH/LED/S	105	1220	81	2 x 4ft
GLC 120/NS/LED	44	610	64	1 x 2ft
GLC 140/NS/LED	44	1220	64	1 x 4ft
GLC 220/NS/TH/LED	105	610	71	2 x 2ft
GLC 240/NS/TH/LED	105	1220	71	2 x 4ft
GLC 120/91/LED	54	610	83	1 x 2ft
GLC 140/91/LED	54	1220	83	1 x 4ft
GLC 158/91/LED	54	1520	83	1 x 5ft
GLC 220/91/TH/LED	105	610	90	2 x 2ft
GLC 240/91/TH/LED	105	1220	90	2 x 4ft
GLC 258/91/TH/LED	105	1520	90	2 x 5ft

\*\* /LED/1E = One End (L-N), One End (short circuit) LED tube wiring

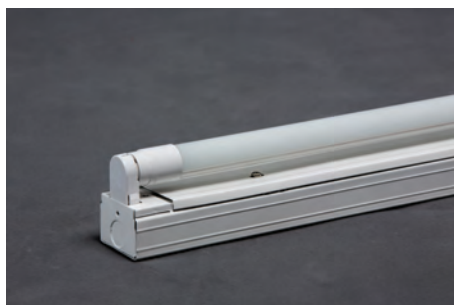
\*\* /LED/2E = One End (L), One End (N) LED tube wiring

\*\* /LED/SE = Single End (L-N), another End (open circuit) LED tube wiring

### PROFILE



## PHOTO



### LE/M Series

Body Height: 38mm  
Fitting with starter holder



### NS Series

Body Height: 28mm  
Slim Fitting



### 91 Series

Body Height: 47mm  
Thicker Body Fitting

## Technical Data

Housing	Heavy gauge sheet steel body with fully welded end-cap
Surface Finishing	White epoxy powder coated & oven baked
Lamp Holder	Polycarbonate housing with Copper plate contact
Wire	Heat resistance 105°C, SIRIM approved material
Connector	UL, VDE safety approved material