



Your partner in lighting technology

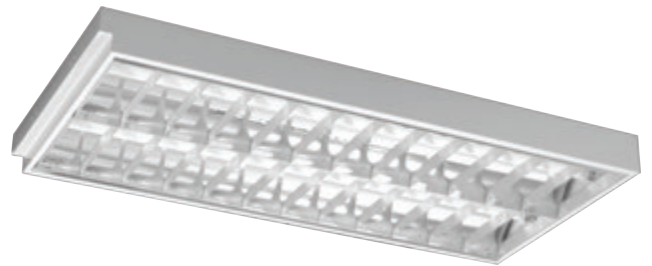
METEOR LED

SAC T8 Mirror Louvre Fitting Series



Features & Benefits

Designed for recess imperial exposed T-Bar ceiling mounting with single parabolic mirror optic louvre with christmas profile cross blades. Louvres retained by means of slide lock set and can be lowered and hang from either side.



Application

Ideal for indoor application, offices, retail stores, supermarkets, schools and hotels.

Optics

Louvre Material	High Quality Anodised Aluminium
Louvre Type	Specular

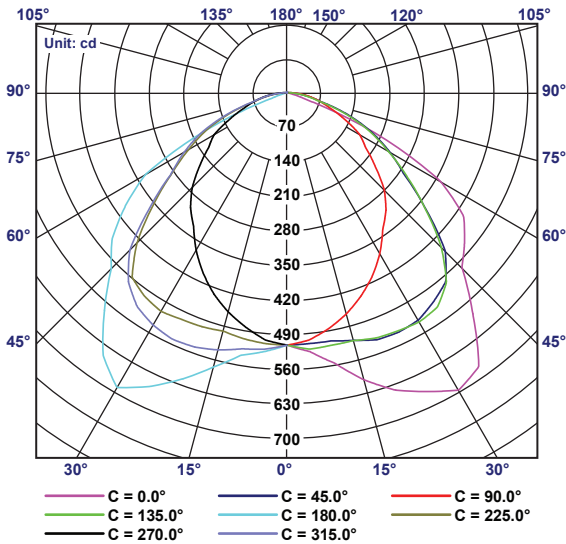
Luminaire Product Description

Mounting	Recessed
Housing Material	Cold Roll Steel
Coating	Epoxy Polyester Powder
Light Source	T8 LED lamp
Input Voltage	240V~, 50Hz
Operating Temperature	45°C
Power Factor	>0.9
Ingress Protection	IP20
Insulation Classification	Class I

Control

*Dimming Option	Fixed Output
-----------------	--------------

Photometric

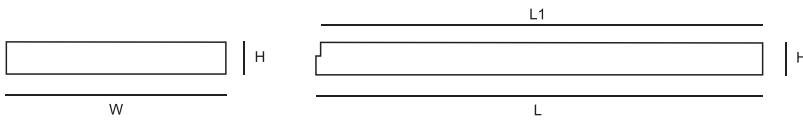


Luminous intensity values are shown radially from centre.
Elevation angle values are shown around the outside of the graph.
Report No : J20202120507

TM5 Utilization Factors

Utilization factors			SHR Nominal = 1.00:1 SHR Maximum = 1.24:1									
Room reflection			Room index (K)									
C	W	F	0.75	1	1.25	1.5	2	2.5	3	4	5	
0.7	0.5	0.2	0.56	0.67	0.75	0.81	0.88	0.93	0.97	1.01	1.04	
	0.3		0.48	0.60	0.68	0.74	0.82	0.88	0.92	0.98	1.01	
	0.1		0.43	0.54	0.62	0.69	0.77	0.84	0.88	0.94	0.98	
0.5	0.5	0.2	0.55	0.65	0.73	0.78	0.85	0.90	0.93	0.97	1.00	
	0.3		0.47	0.59	0.66	0.72	0.80	0.86	0.89	0.94	0.97	
	0.1		0.42	0.53	0.61	0.67	0.76	0.82	0.86	0.91	0.95	
0.3	0.5	0.2	0.53	0.63	0.70	0.76	0.82	0.87	0.90	0.94	0.96	
	0.3		0.47	0.57	0.65	0.71	0.78	0.83	0.87	0.91	0.94	
	0.1		0.42	0.53	0.61	0.66	0.74	0.80	0.84	0.89	0.92	
0.0	0.5	0.0	0.40	0.50	0.58	0.63	0.71	0.76	0.80	0.84	0.87	
	0.3		0.40	0.50	0.58	0.63	0.71	0.76	0.80	0.84	0.87	
	0.1		0.40	0.50	0.58	0.63	0.71	0.76	0.80	0.84	0.87	
Distribution Factors			Floor :	0.40	0.50	0.58	0.63	0.71	0.76	0.80	0.84	0.87
			Wall :	0.60	0.50	0.42	0.37	0.29	0.24	0.20	0.16	0.13
			Ceiling :	0.00	0.00	0.00	0.00	0.00	0.00	0.00	0.00	0.00
			BZ Numbers :	5	5	4	4	4	4	4	4	4

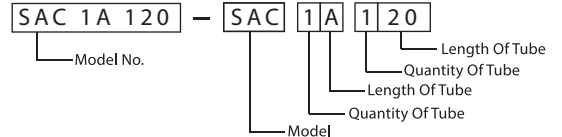
Dimension



Order Reference

Model	Quantity Of Tube	Length Of Tube
SAC	1	A (2ft)
	2	C (4ft)
	3	
	4	

Example :



Order Information

Model No.	No. Of Lamp	L(mm)	L1(mm)	W(mm)	W1(mm)	H(mm)	H1(mm)
SAC 1A 120 MOL (1x2)	1	612	600	302	-	90	-
SAC 2A 220 MOL	2			600			
SAC 3A 320 MOL	3			600			
SAC 4A 420 MOL	4			600			
SAC 1C 140 MOL (1x4)	1	1222	1210	302	-	90	-
SAC 2C 240 MOL (1x4)	2			600			
SAC 2C 240 MOL	2			600			
SAC 3C 340 MOL	3			600			
SAC 4C 440 MOL	4			600			

Note : Subject to +/- 1.5mm

*Other various types are available upon request.