

Perkūnas

METAL HALIDE BULB AND TUBE



150W MH BULB



250W MH BULB



400W MH BULB



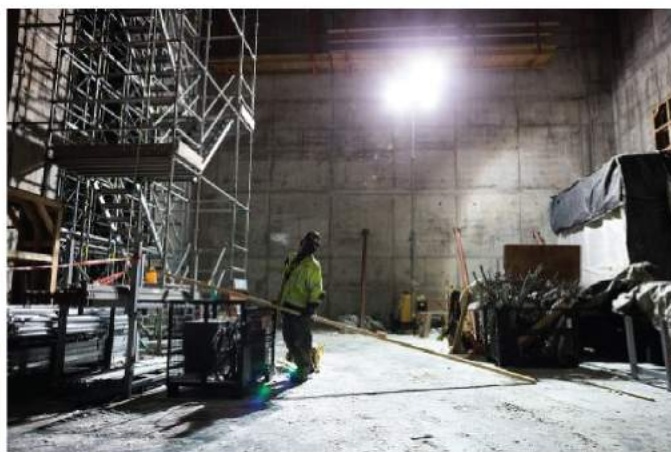
250W MH TUBE



400W MH TUBE



1000W MH TUBE



**All pictures shown are for illustration purpose only*

Metal halide lamps are used for wide area overhead lighting of commercial, industrial, and public spaces, such as parking lots, sports arenas, factories, and retail stores, as well as residential security lighting and automotive headlamps. They also require a warm-up period of several minutes to reach full light output, so they are not typically used for residential room lighting, which is turned off and on frequently.

SPECIFICATION:	150W MH BULB	250W MH BULB	400W MH BULB	250W MH TUBE	400W MH TUBE	1000W MH TUBE
LUMENS	11400LM	19000LM	32000LM	21000LM	36000LM	110000LM
SIZE	140*60	230*90	230*90	250*45	270*45	365*70
CURRENT	1.80A	2.15A	3.25A	2.15A	3.25A	8.25A
FINISH	CLEAR	CLEAR	CLEAR	CLEAR	CLEAR	CLEAR
BASE	E27	E40	E40	E40	E40	E40
CCT	6000K	6000K	6000K	6000K	6000K	4500K
LIFE	12000HRS	12000HRS	12000HRS	8000HRS	8000HRS	6000HRS
PACKING	25/CTN	20/CTN	20/CTN	12/CTN	12/CTN	12/CTN

