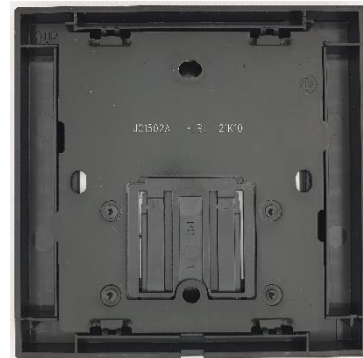


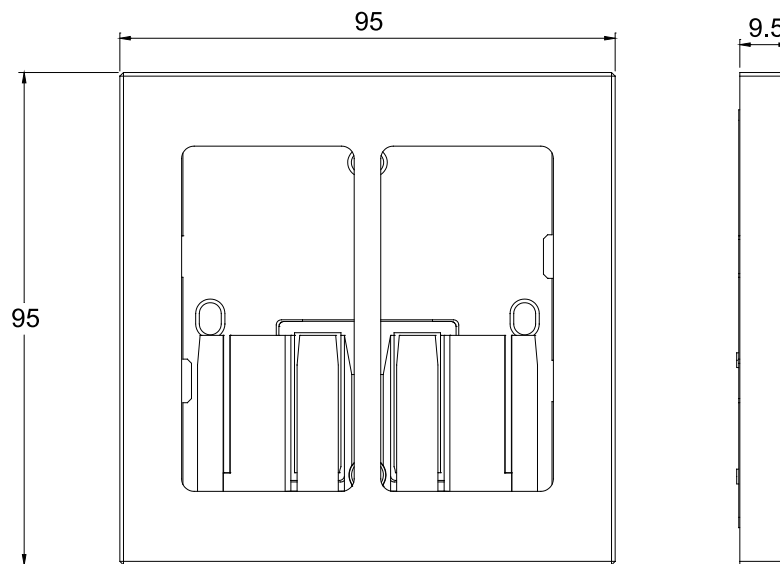
Product Code	Description
JC1502A	Frame for 2 Column Key Pad



Frame front View
(With Keypad installed)



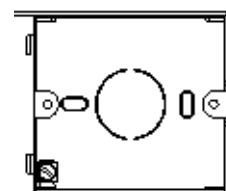
Frame back view
(With Keypad installed)



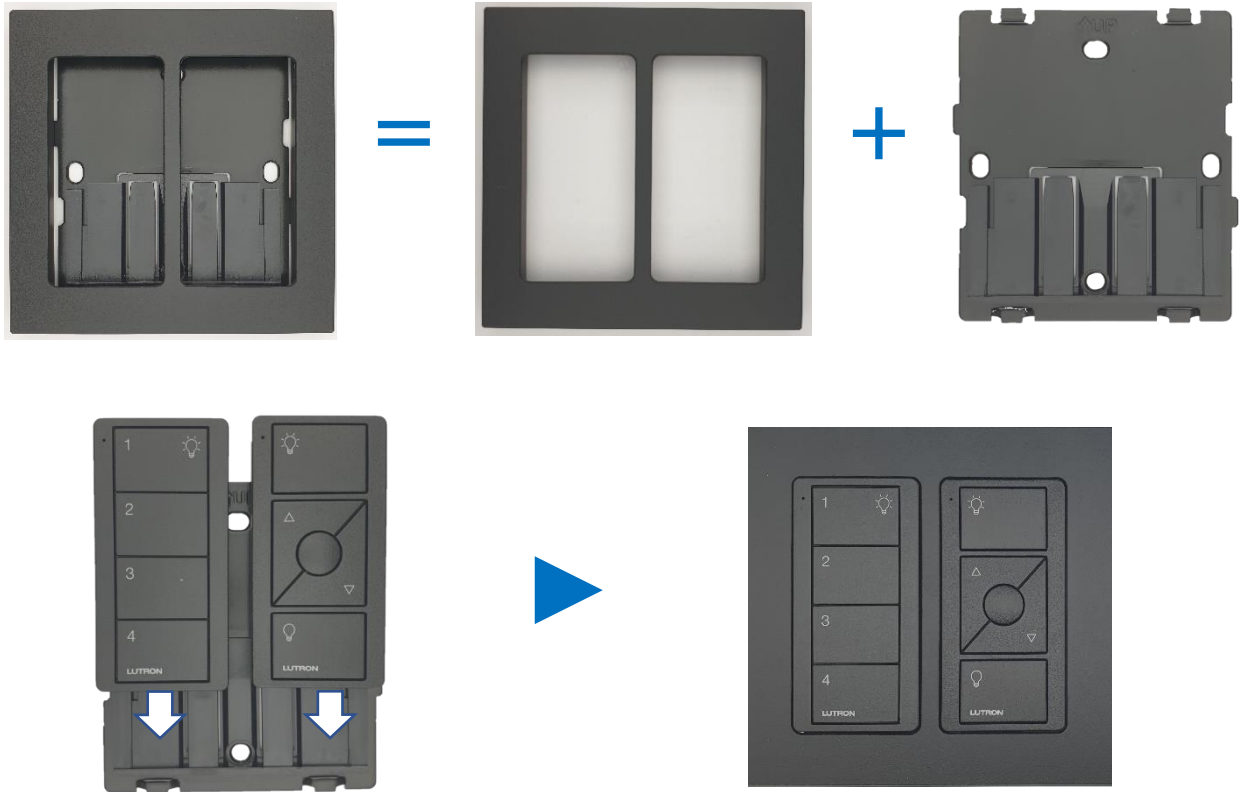
Frame Dimensions





Technical Specification

- Exclusive frame for Lutron Pico Keypad
- Dimensions: 95 x 95 x 9.5mm (WxHxD)
- Fix Centre: 60.3 mm
- Metal Wall box (if required):
 - M1050, flush mounting
(75.5 x 66.8 mm x 50 mm)
(W x H x D)



Frame + Pico Keypad x 2 Assembly



Product Code	Colour
JC1502A-LWH	 Matt White
JC1502A-LBL	 Matt Black
JC1502A-DAD	 Metallic-Spray Matt Grey
JC1502A-BL	 Metallic-Spray Black
<i>For other colours, please contact T&J Sales representative</i>	