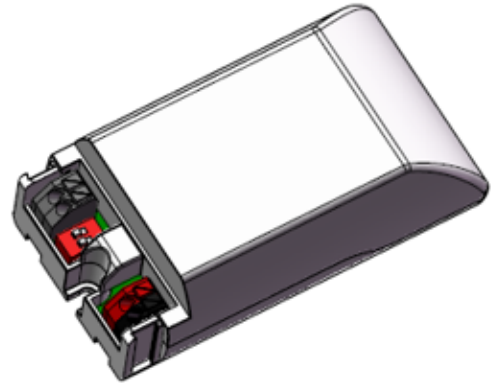


OT FIT 30/220 – 240/700 CS PC

Constant Current LED Power Supply
500mA - 700mA

OPTOTRONIC® LED Power Supply with high reliability in extra small & compact housing, providing leading and trailing dimming performance. It equips with 2 selectable currents, fits in light fixtures for hospitality and residential lighting applications.



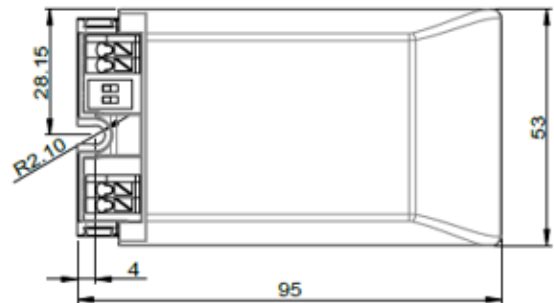
Benefits

Suitable for use with electronic Leading and Trailing Edge dimmer;
2 output current selected by DIP-switch;
High quality of light with low ripple current
Small housing for compact fixture;
Long lasting and high reliability
Safety ensured by OSRAM (SELV)



Applications

Downlights, Spotlights and other indoor luminaires



Approval marks



Product Features

- Output Current: 500/700mA
- Output Voltage: 27V_{DC} – 40V_{DC}
- Phase cut dimmable
- Suitable for Class I and II luminaires
- Output Power: 13.5W – 28W
- Ambient Temp Ta: - 20 to +50°C
- Typ. Efficiency: 85%
- 50'000 hours lifetime @T_c = 65°C

Electrical Specifications

	Item	Value	Unit	Remarks
INPUT	Nominal voltage	220 – 240	V _{AC}	
	Nominal frequency	50 / 60	Hz	
	AC voltage range	198 – 264	VAC	Safety voltage range
	Maximum voltage	275	V	2 hours maximum, No damage to LED Module
	Nominal current	150	mA	Full load, 230 V, 50 Hz, typical. Refer to Table 1 for details
	Total Harmonic Distortion (THD)	< 20	%	Full load, 230 V, 50 Hz
	Power factor	> 0.95		Full load, 230 V, 50 Hz
	Efficiency	85	%	Full load, 230 V, 50 Hz, typical
	No load power	n/a		
	Stand by power	n/a	W	230V, typical
	Power loss	5	W	Full load, Max power, 230 V, 50 Hz, typical
	Protection class	II		
	Inrush current	<10	A	twidth = 100 µs typical (measured at 50% Ipeak)
	Max. units per circuit breaker	B10: 27; B16: 43 C10: 40; C16: 64 B25: 67; C25: 100		
Leakage current	< 0.7	mA	Output floating	
OUTPUT	Nominal voltage range	27 – 40	VDC	
	Maximum voltage	60	VDC	Open circuit
	Nominal current range	500/700	mA	
	Current accuracy	+/- 10	%	
	Current ripple typical.	< 5	%	Ripple / average @ 100 Hz, @ full load.
	Pst LM	≤ 1		
	SVM	≤ 0.4		
	Nominal power range	13.5 - 28	W	Partial Load. Refer to Table 1 for details
	Maximum power	28	W	Ta =50°C
	MM mark	Yes		
Galvanic isolation	SELV		Output to mains - Touch current < 0.7 mA	
DIMMING	Dimming control	Yes		Suitable for use with electronic leading- and trailing edge dimmer (Phase Cut)
	Dimming range	5-100	%	
	Dimming technique	Leading & Trailing Edge Amplitude dimming		
	Frequency	100	Hz	
	Noise level	< 22 dB(A)		at any dim level, microphone 20cm on top of the driver
ENVIRONMENT	Ambient temperature range ta	-20 ... +50	°C	Refer to Table 1 for details
	Maximum case temperature tc	75	°C	
	Max. case temp. in fault condition	110	°C	
	Storage temperature range	-20 ... +80	°C	Cool down before operating
	Relative humidity	5 ... 85	%	Not condensing
	Surge transient protection	1 2	kV	L/N LN/PE acc. IEC 61000-3-2
	Environmental rating	Indoor		
	IP rating	IP 20		
	Mains switching cycles	> 100'000		
	Expected lifetime	35'000 50'000	hrs	@ tc max with 10% failure rate @ tc max -10°C with 10% failure rate

Protections

Over temperature

Automatic reversible

Overload

Automatic reversible

No load

Yes

Input overvoltage

Maximum allowed input voltage 275V AC

Output overvoltage

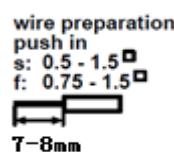
Yes, Limitation of Output voltage < 60V

Short-circuit

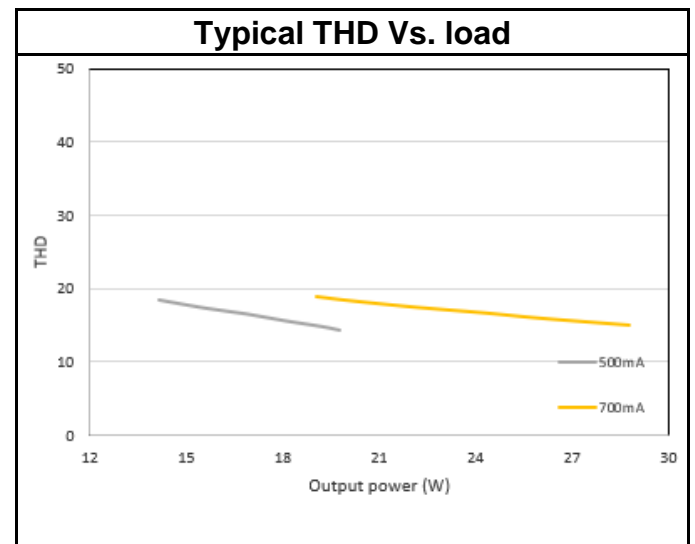
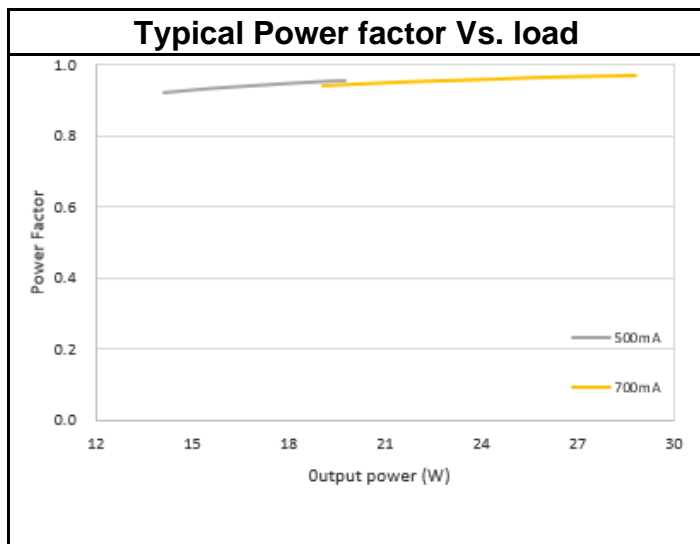
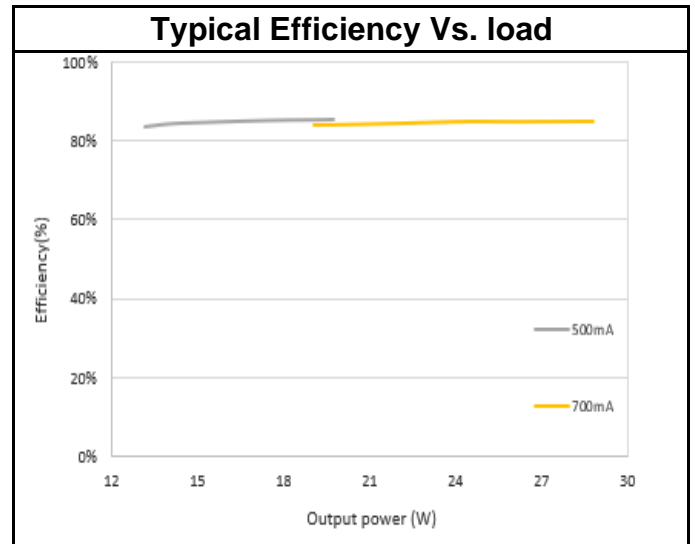
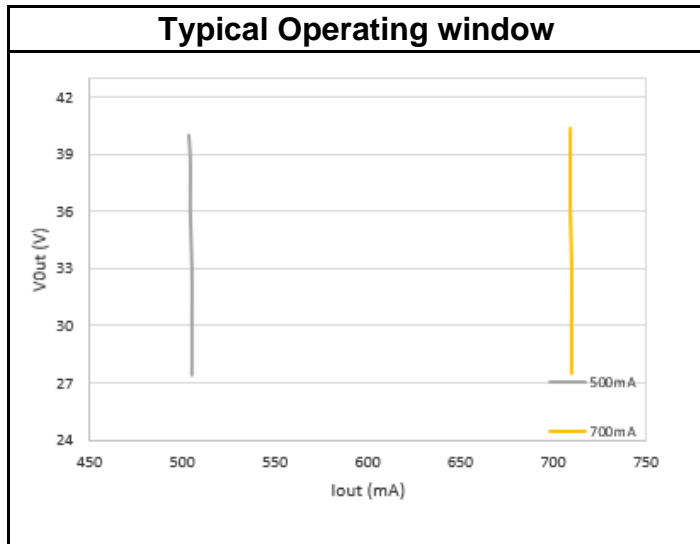
Yes

Wiring Diagram

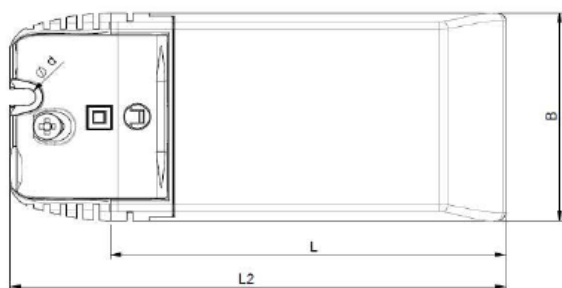
Terminal: Push in terminal;
 Max. cable length - system: 2 m
 Weight: 107g



Hot plug-in or secondary switching of LEDs is not permitted and may cause a very high current to the LEDs.



An optional cable clamp is available. This cable clamp can be snapped onto the ECG and thus converts it into an ECG suitable for independent installation.



L	95mm
L2	119mm
B	53mm
H	30mm
d	Φ 4,2



Table 1 - Rated output power and current sets

I out [mA]	500	700
U min [V]	27	27
U max [V]	40	40
P min [W]	13.5	18.9
P max [W]	20	28
Ta [°C]	50	50
Tc [°C]	75	75
Line Current, nominal@230V [mA]	105	150

Pin1	Pin2	Current
OFF	OFF or ON	500
ON	OFF or ON	700

Current selection by DIP-switch

Standards

Safety: IEC 61347-1, IEC 61347-2-13

Performance: IEC 62384

Harmonic content: IEC 61000-3-2

Immunity: IEC 61000-4-5

IEC 61547

Product name	EAN10	EAN40	Pieces / box
OT FIT 30/220-240/700 CS PC	4052899617308	4052899617766	20pcs
OT Cable Clamp E-style	4052899167896	4052899095861	20pcs

OSRAM GmbH

Head office:

Marcel-Breuer-Strasse 6
 80807 Munich, Germany
 Phone +49 89 6213-0
 www.osram.com

