

LED Highbay

features

- ⇒ Highbay body material made out of aluminum, reflector is designed to cover wide surface areas
- ⇒ Input voltage of AC 90V ~ 265V 50/ 60 Hz
- ⇒ **Power Factor of 0.95**, with 98% power saving
- ⇒ Working environment temperature between -30°C to 55°C , humidity of 25%-60% RH
- ⇒ High colour rendering index, restore true colour of environment
- ⇒ Applicable installments for indoor warehouse, factory, large area to light up the whole place



standard specification

Long Lifetime

30,000 hours

Applications

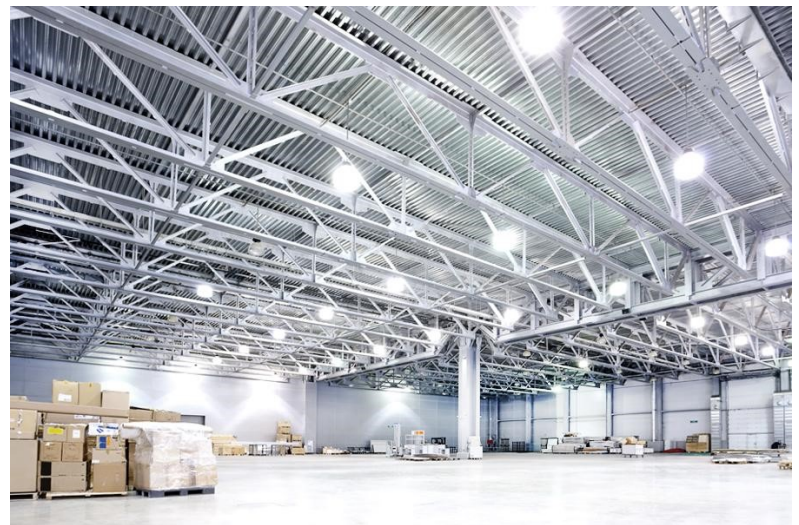


Colour Temp

available in
daylight (6500K)

dimension

Watt (W)	Size Dimension (mm)
100	445 X 445 X 300
150	445 X 445 X 310
200	500 X 500 X 330



Description	Watt (W)	Voltage (V)	Lumen (LM)	Installation Height (m)	CCT	Standard Pack
CSG-100HB	100	AC 90 ~ 240	10,000	4 - 5	6500K	4 pcs/ ctn
CSG-150HB	150	AC 90 ~ 240	15,000	5 - 6	6500K	4 pcs/ ctn
CSG-200HB	200	AC 90 ~ 240	20,000	5 - 6	6500K	4 pcs/ ctn