

T5 LED FITTING

features

- ⇒ Up to 50% energy saving compared to fluorescent lamps
- ⇒ Bright and uniform light output
- ⇒ Short start-up time, and easy to install
- ⇒ Adopt high efficiency LED chip and heat dissipation design, ensure the LED has high efficiency, low light wane and long lifetime
- ⇒ Environmental, safety, no pollution in accordance with ROHS standard
- ⇒ Adopt constant current driver switching power supply, input voltage 170 ~ 260 V



standard specification

Long Lifetime

30,000 hours

Colour Temp

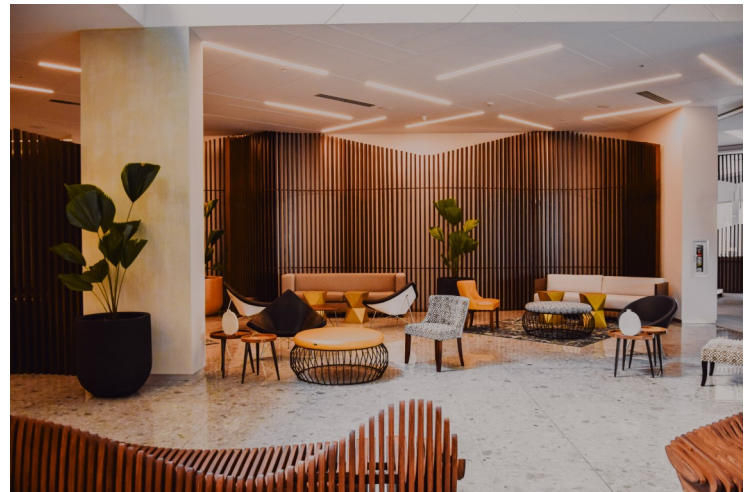
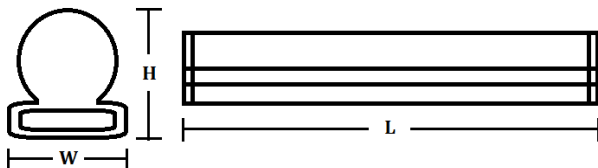
available in
warmwhite (3000K)
coolwhite (4000K)
daylight (6500K)

Applications



Environmental Conscious

in line with the relevant recognition permit requirements



Approved by:



Watt (W)	Length (mm)	Height (mm)	Width (mm)
5	300	37	20
9	600	37	20
14	900	37	20
18	1200	37	20

Description	Watt (W)	Voltage (V)	Lumen (LM)	CCT	Standard Pack
CSG-5T5	5	AC 170 ~ 260	504	3000K, 4000K, 6500K	50 pcs/ ctn
CSG-9T5	9	AC 170 ~ 260	756	3000K, 4000K, 6500K	50 pcs/ ctn
CSG-14T5	14	AC 170 ~ 260	1092	3000K, 4000K, 6500K	50 pcs/ ctn
CSG-18T5	18	AC 170 ~ 260	1450	3000K, 4000K, 6500K	50 pcs/ ctn