

BELEGANT

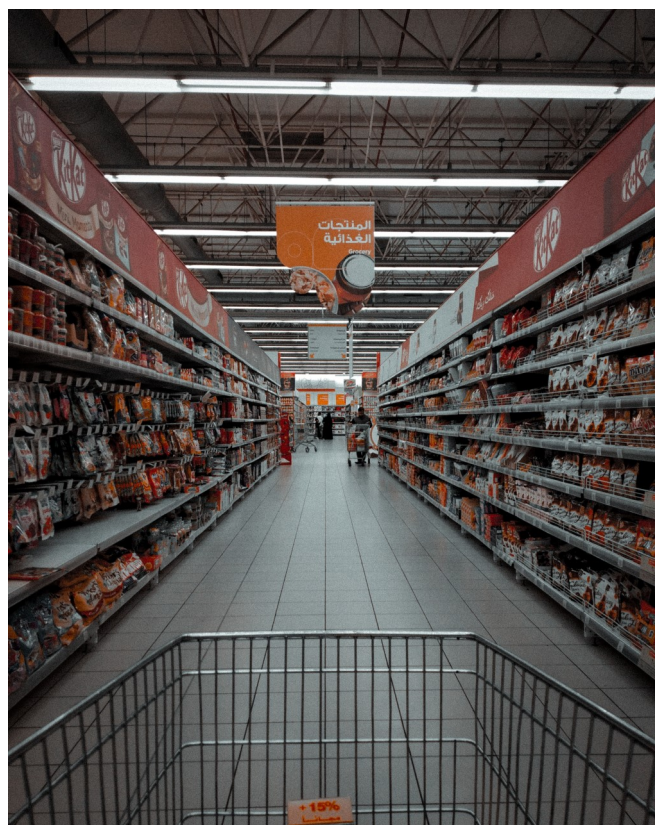
BRIGHT MAKER

LED T8 NANO TUBE



features

- ⇒ The use of thermoplastic Nano Polycarbonate LED tubes assures the protection of the tubes over breakage by accident during shipping or installation
- ⇒ Due to the thermal conductivity of the tubes, it will not change out of shape even after working long hours under high temperature
- ⇒ Due to the Nano technology, the tube's discoloring prevention is better than other tubes as their lumen levels sustained properly
- ⇒ Bright and uniform light output
- ⇒ Short start-up time, an easy to install
- ⇒ Adopt constant current drivers switching power supply, input voltage 220 ~ 260 V



standard specification

Lifetime

15,000 hours

Colour Temp

available in
daylight (6500K)

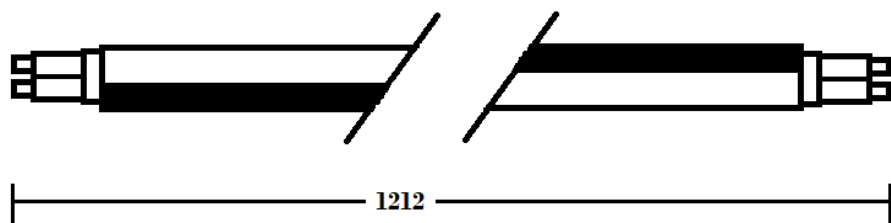
Applications



Environmental Conscious

This product is mercury free, so there will be 0% mercury pollution

dimensions (mm)



28

Approved by:



Description	Watt (W)	Lumen (LM)	Voltage (V)	CCT	Beam Angle	Standard Pack
BELG-T818LT	20	1920	AC 220 ~ 260	6500K	270°	30 pcs/ ctn