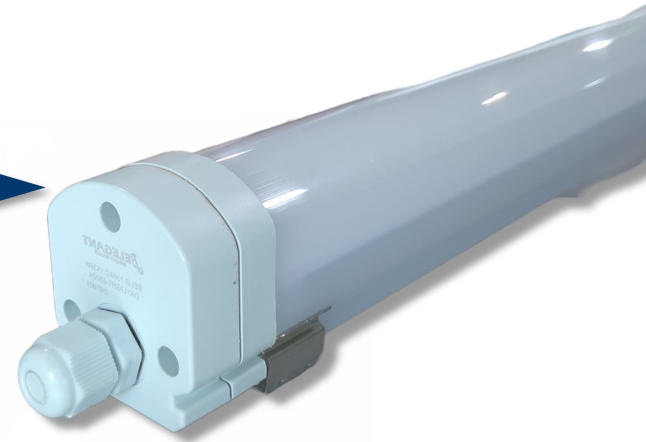


LED ANTI CORROSIVE FITTING



features

- ⇒ Comes with IP65, making it suitable for outdoor use
- ⇒ High quality polycarbonate diffuser, which is more durable than acrylic
- ⇒ Corrosion resistant polycarbonate body
- ⇒ Stainless steel clips available separately
- ⇒ White steel gear tray with nylon suspension straps
- ⇒ Flicker free starting with no strobing of lamp
- ⇒ Designed for a connection with an AC 165 ~ 265 V
- ⇒ High colour rendering index, restore true colour of environment



standard specification

Lifetime

25,000 hours

Colour Temp

available in

warmwhite (3000K)

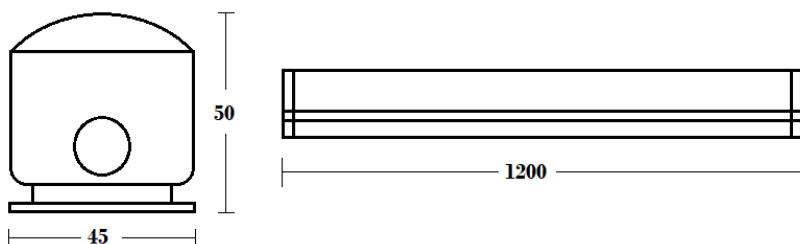
coolwhite (4000K)

daylight (6500K)

Applications



dimensions (mm)



| Description | Watt (W) | Voltage (V) | Lumen (LM) | CCT | CRI | Standard Pack |
|-------------|----------|--------------|------------|---------------------|------|---------------|
| BELG-136AC | 36 | AC 165 ~ 265 | 3060 | 3000K, 4000K, 6500K | ≥ 80 | 20 pcs/ ctn |