

# BSLight ULTRA



## UFO SMD LED HIGH BAY IP65 10 KV SURGE PROTECTION

\*\*\*<<<ULTRA SERIES>>>\*\*\*



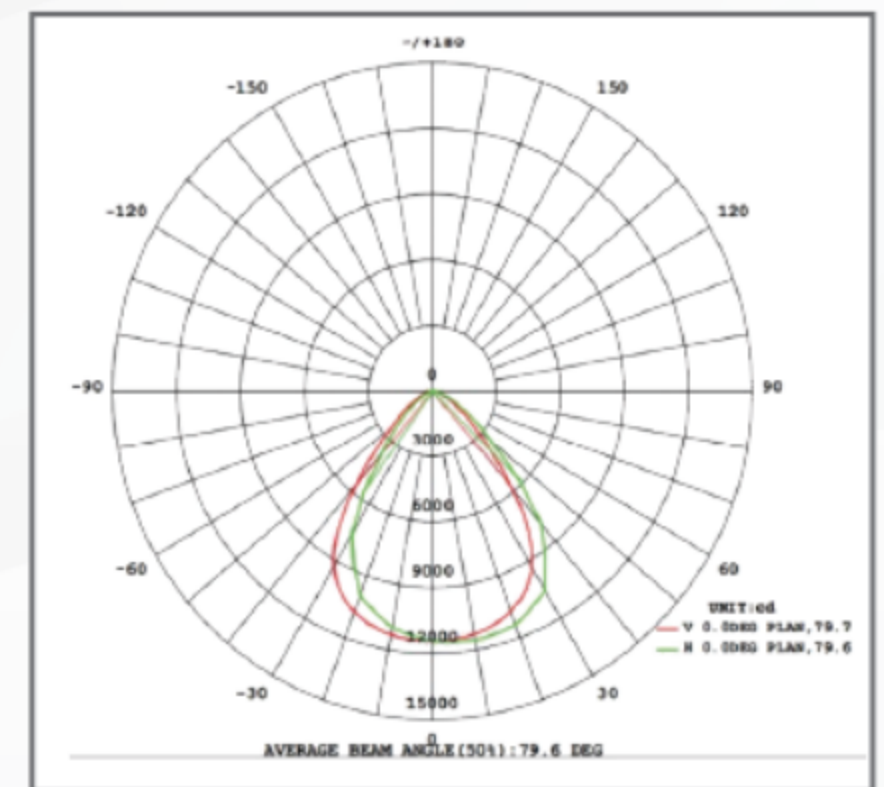
## APPLICATION

- Ideal for Warehouse Lighting, Factory Lighting, Stadium Lighting.



## FEATURES

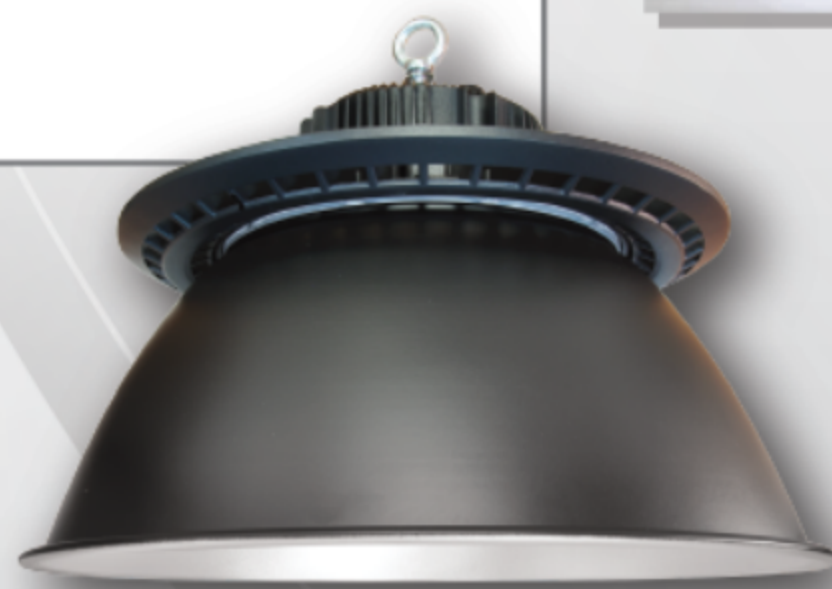
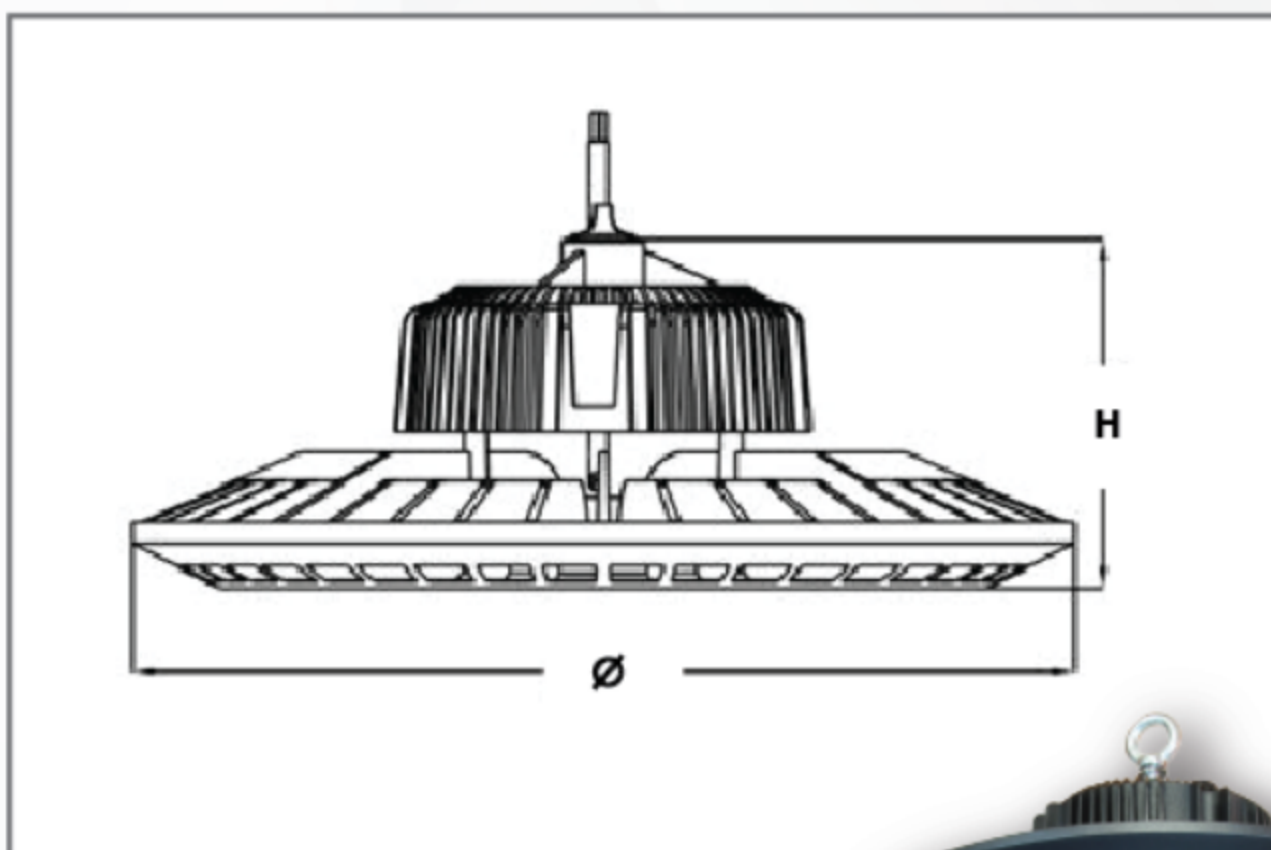
- Long Life LED Chips (50,000hrs)
- Operating Temp. -20°C ~ 50°C
- Solid Aluminium Die-Casting Housing
- Natural Convection Cooling Design (Fanless Structure)
- IP65 rating fully dust tight & protected against solid objects.  
(Suitable for cool-room and oily base environment)



Luminous Intensity Distribution Diagram



MODEL	POWER (W)	CCT (KT)	LUMEN (LM)	SIZE Ø x H (mm)	NET WEIGHT	PACKING
BSHBIP65-100	100W	3000/4000/6500	13000	290 x 118	2.0 kg	1/CTN
BSHBIP65-150	150W	3000/4000/6500	19500	345 x 127	3.1 kg	1/CTN
BSHBIP65-200	200W	3000/4000/6500	26000	400 x 145	3.4 kg	1/CTN



<<Optional Available To Add-On >>

