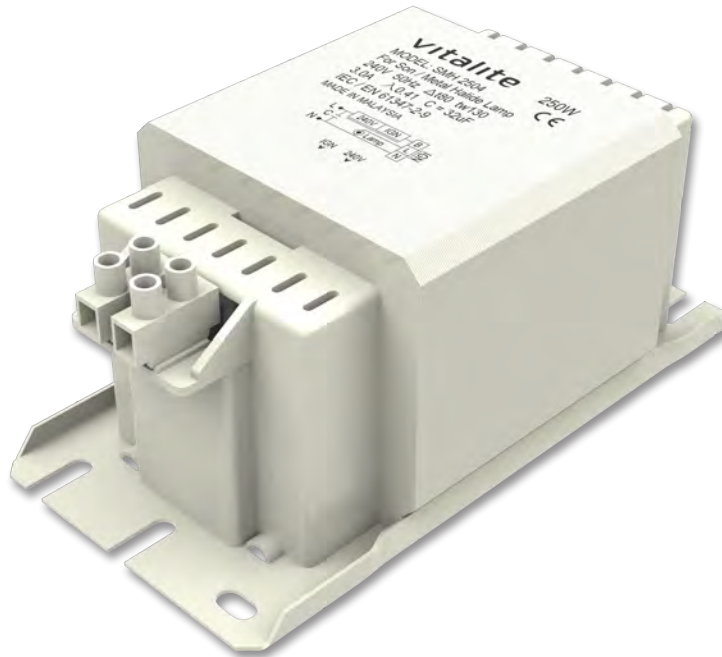


**\*\*Available Voltage Range :**

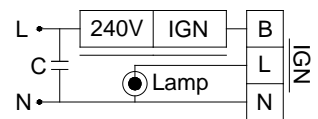
- 220V 50Hz
- 230V 50Hz



**Approval Marks:**



**Circuit Diagram**



**Input Voltage :**

AC 240V, 50Hz

**Specification :**

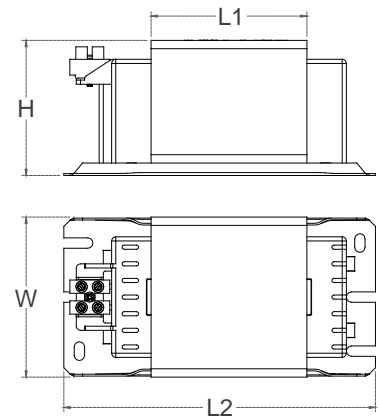
Max Operating Temperature  $t_w$  130°C

**Terminal Block :**

Screw Type (Max Conductor Size 2.5mm<sup>2</sup>)

**Test Standard :**

- EN 61347-1 : 2008
- EN 61347-2-9 : 2001 + A1 : 2003 + A2 : 2006
- EN 55015 : 2006 + A1 : 2007



BALLASTS FOR HIGH PRESSURE SODIUM (SON), HIGH PRESSURE MERCURY VAPOUR (M) & METAL HALIDE (MH) LAMPS.

Lamp		Ballast					Capacitor						
W	Type	Model	A	PF ( $\lambda$ )	Loss (W)	$\Delta t$	Dimension				Weight (Kg)	Cp ( $\mu$ F)	Current (A)
							L1	L2	W	H			
150	SON / MH	<b>SMH 1504</b>	1.80	0.40	24	80	65	132	66	54	1.84	20	0.67
250	Mercury	<b>MMH 2504</b>	2.15	0.55	22	80	55	130	76	65	2.24	20	1.20
	MH				23								
	SON / MH	<b>SMH 2504</b>	3.00	0.41	32	80	75	150	76	65	2.95	30	1.20
400	Mercury	<b>MMH 4004</b>	3.25	0.55	26	70	60	143	96	82	3.83	30	1.75
	MH				30							35	

Packed in carton.

SMH 1504 6 Pcs 11.2 kg 270 X 210 X 75 mm  
 MMH 2504 6 Pcs 13.5 kg 274 X 240 X 87 mm

SMH 2504 6 Pcs 17.6 kg 312 X 240 X 87 mm  
 MMH 4004 4 Pcs 15.2 kg 296 X 204 X 104 mm