



Input Voltage :

AC 220-240V, 50/60Hz

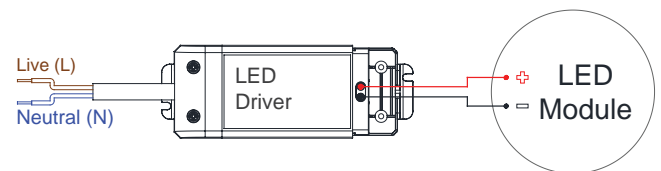
Test Standard :

IEC 61347-2-13 : 2014

IEC 61347-1 : 2015

Lifespan :

Up to 30000 Hours
(at ta 40°C)



Terminal Block :

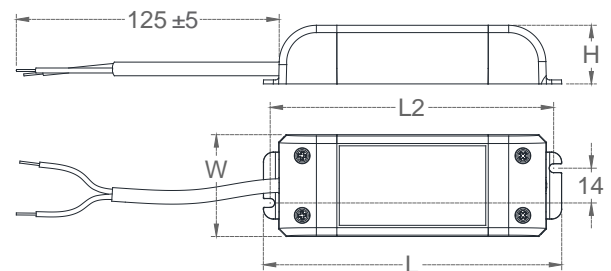
Screw Type

(Terminal for leads: 0.5mm² - 1.0mm²)

Certified by :

SIRIM QAS INTERNATIONAL SDN. BHD.

JABATAN BOMBA DAN PENYELAMAT MALAYSIA



Model	Output Current	Forward Voltage	Output Power	Power Factor	Efficiency	THD	Max. Temperature (tc / ta)	Dimension (mm)			
								L1	L2	W	H
VLD 10/250/40	250mA	20 - 40V	5 - 10W	≥ 0.50	≥ 82%	≤ 150%	75°C / 45°C	96	89	33	22
VLD 15/350/43	350mA	20 - 43V	7 - 15W	≥ 0.50	≥ 84%	≤ 150%	75°C / 45°C	109	103	41	24
VLD 25/500/50	500mA	30 - 50V	15 - 25W	≥ 0.90	≥ 88%	≤ 15%	75°C / 45°C	120	115	41	24
VLD 35/700/50	700mA	30 - 50V	20 - 35W	≥ 0.90	≥ 88%	≤ 15%	75°C / 45°C	123	118	46	23