

SOLAR STREET LIGHT

Bifacial Series

SL03-JL: Available in 40W-100W models

Product Orientation: All-In-One Solar Street light utilizes Twin Solar Panels and intelligent MPPT controller which mightly increase battery charging efficiency by 25%. Waterproof battery box greatly decrease the potential risk of battery shortage due to ingress water in the long term usage.



1. ADVANTAGE

Twin Solar Panel Design

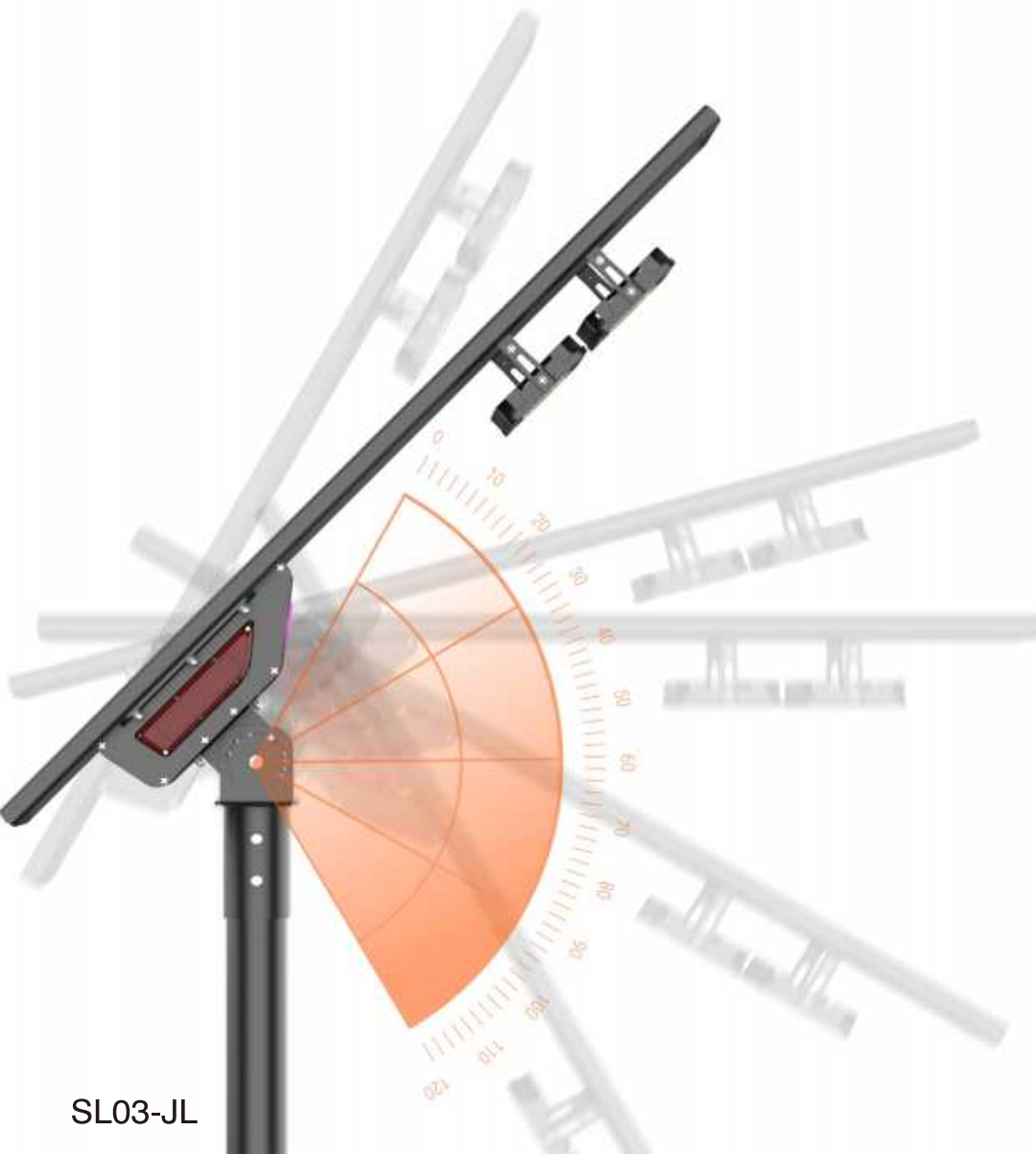
Battery Charging Efficiency increase **25%**.



2.ADVANTAGE

LED MODULE Adjustable Solar Panel Adjustable

Free Adjustable of Multiple angles of Soalr Panel, LED Modules to meet most challenge application fields



3. ADVANTAGE

IP66 Waterproof Battery box

Fortified waterproof design to prevent the potential risk of battery shortage due to the water ingress. Fins structure design to improve heat dissipation.



SL03-JL



Bifacial Series

Solar Panel

Aluminum Profile Frame

Solar Panel

MPPT Controller

Battery

Battery Cavity

Dust Cover

LED Module

Microwave Sensor

Lens

60/82MM MOUNT SLEEVE
304 STAINLESS FASTENERS

φ69MM/φ80MM Lamp-post

4.ADVANTAGE

ZHAGA Terminal Controller

Transmit the information to gateway wirelessly through LoRaWan.



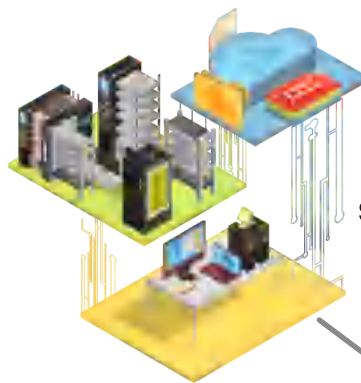
SL03-JL

Gateway

Bifacial Series



Visualization Monitoring



Server

5.ADVANTAGE

Solar Lighting Control Topology

Remote control such as dimming, on/off, real-time feedback and etc could be easily achieved by monitoring system through the data collected by Terminal controller which is transmitted wirelessly through Gateway, Operator Base, Server over LoRaWAN as well as multiple links such as Ethernet, 4G, and WiFi networks.



Operator Base



4G

LoRaWAN



Terminal Controller





Illumination Supervision Platform

Lights Supervision

Monitor data for all terminals in operation at intervals set by the operator and save the detected terminal operation data.



Remote Lighting Control

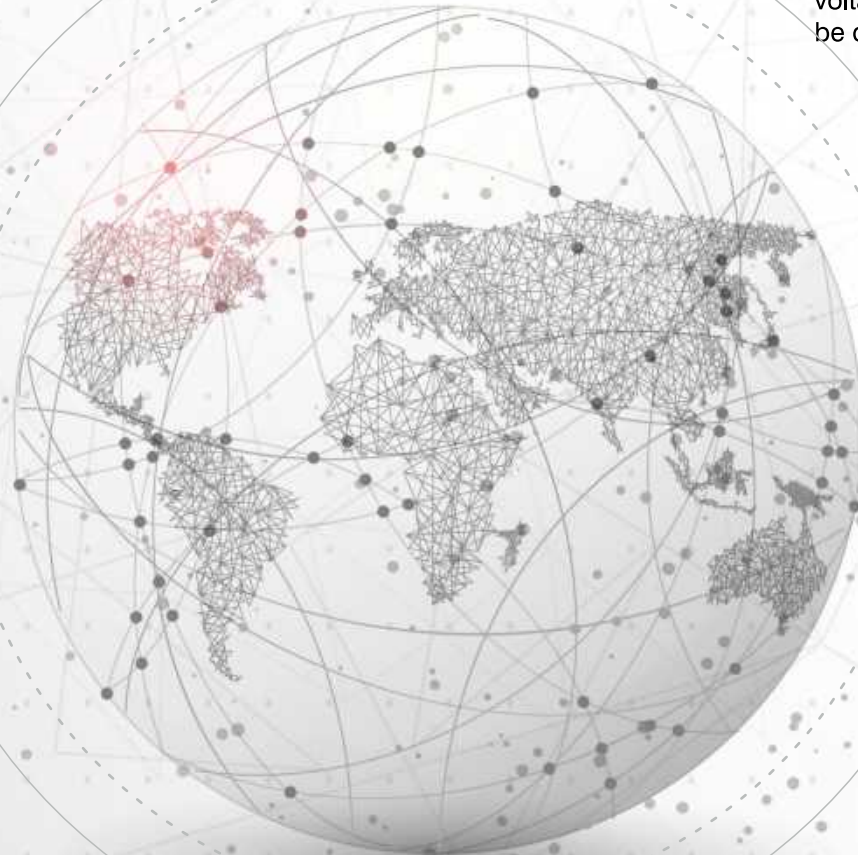
Randomly turn ON/OFF , Customized Group of Street Lights, Intelligent control of lights ON/OFF at regular intervals, Dimming at time intervals.



Real-Time Data Feedback



Data such as single lamp, gateway, solar panel, battery, lighting fixture status, current, voltage and etc. which can be queried at any time.



Malfunction Alarm



The monitoring software provides real-time fault alarms, fault detection, troubleshooting tracking function by collecting all data of the battery, solar battery charging and discharging abnormalities or other faults.



Data Summarization

The system automatically carries out statistics according to different regions of the different electricity prices and calculate the electricity bill.



System Extensibility

Open platform interface provides easy connection to other manufacturers' systems, facilities, equipment.

