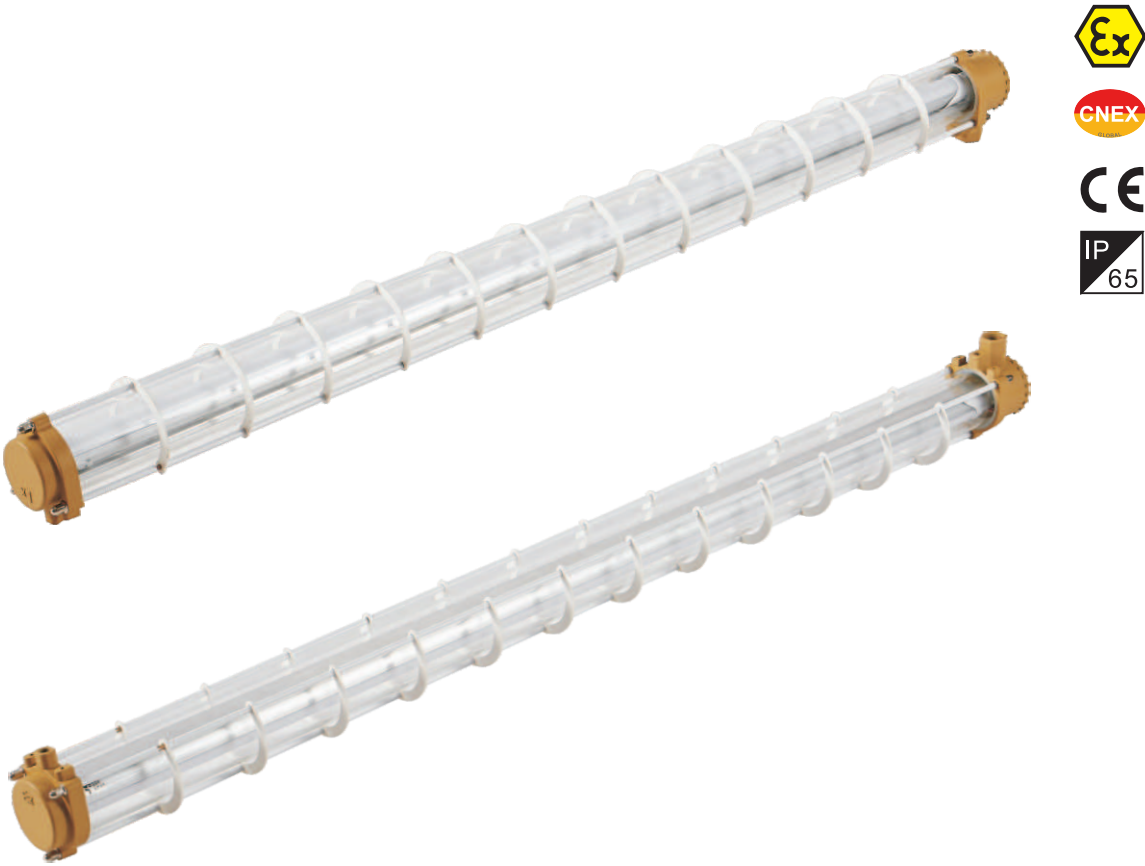


NEW—FBY006

LED Explosion-proof Light Tube  
AC90-265V50Hz



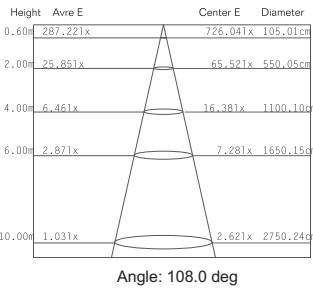
Specification

NEW—FBY006

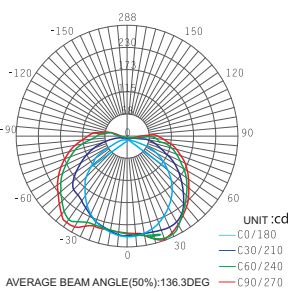
Model Name	NEW-FBY006	
Input Voltage	AC90-265V	
Power Frequency	50/60Hz	
Power Factor	≥0.96	
Wattage	1x8W	1x18W
Lamp Luminous Flux (LM)	1,100lm	2,400lm
Wattage	1x8W	1x18W

Luminous Efficiency	133 lm/W
CCT	3000 / 4000 / 6500K
CRI	≥ 80Ra
Operating Temperature	-20°C~+45°C
IP Rating	IP65
LED Lifespan	> 50,000hrs

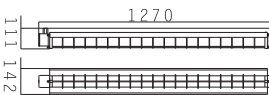
1x18W AVERAGE AND CENTER E FIGURE



1x18W LUMINOUS INTENSITY DISTRIBUTION



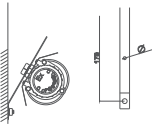
Dimension(mm)& Fixture Installation



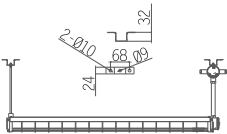
A Ceiling



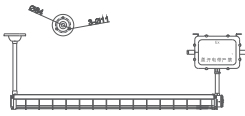
B Tube



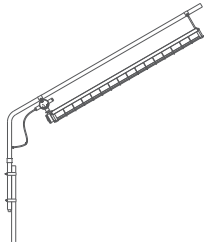
C Wall



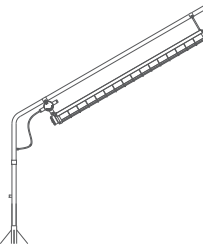
D Ceiling



E Ceiling



F Fence



H Flange

Features

Aluminium alloy Enclosure, high voltage electrostatic powder coated after shot blasted.  
High strength toughened glass cover. BPY easy maintenance Explosion proof LED lamp  
Exposed fasteners are of stainless steel with function of high corrosion-proof.  
With grids to adjust lighting effect and reduce the glare.  
Modular plug structure design, only need disconnect end cover draw out core to change tubes.  
For fitting with emergency unit, It will automatically turn to emergency lighting when power circuit failed.  
Inside the emergency unit designed with over charging and over discharging protection circuit.  
Screw connection type, for easy installation and maintenance.  
Power factor can be over 0.95.  
Steel conduit or cable wiring.

Application

Suitable for explosive gas environment Zone1 and Zone2.  
Suitable for IIA,IIB,IIC explosive gas environment.  
Suitable for Hazardous dust area: Zone20, Zone21, Zone22.  
Can be used in the environment of temperature group for T1~T6.  
Lighting source: T8 tube.  
Designed for petroleum explosion, refinery, storage, chemistry, medicine, military etc. sites with potential explosive atmosphere.

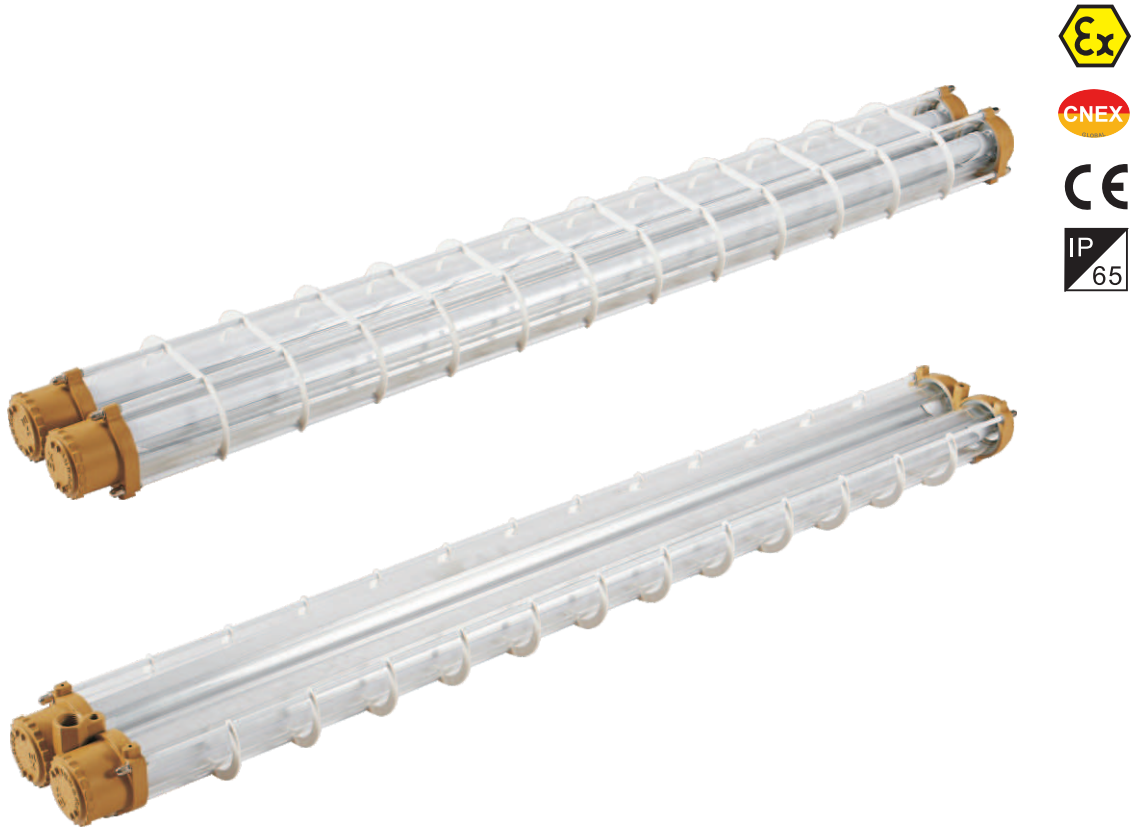
Technical Parameters

Meet a criterion:G3B3836.1, GB3836.2, GB12476.1, IEC60079-0,IEC60079-1, IEC61241-1, EN60079-0, EN60079-1, EN61241-1  
Ex--proof Mark: Exd II BT6 Gb, Exd II CT6 Gb, DIP A21 TA, T6.  
Lighting Source: 1x8W , 1x18W  
Protection grade:IP54, IP65, IP66\*( If need IP66, need to info us)  
Corrosion-proof grade:VF1  
Inlet Thread: G1/2" BPY easy maintenance Explosion proof LED lamp lighting fixture  
Cable outer dia:6mm~10mm  
Battery charging time:≤24h  
Emergency Start time:≤0.3s  
Emergency lighting duration:≥90min

NEW-FBY006

LED Explosion-proof Light Tube

AC90-265V50Hz



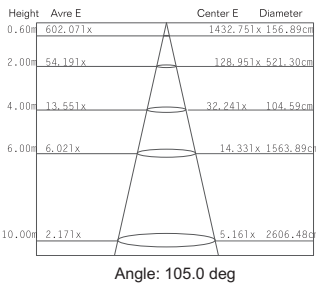
Specification

Model Name	NEW-FBY006	
Input Voltage	AC90-265V	
Power Frequency	50/60Hz	
Power Factor	≥0.96	
Wattage	2x8W	2x18W
Lamp Luminous Flux (LM)	2,200lm	4,800lm
Wattage	2x8W	2x18W

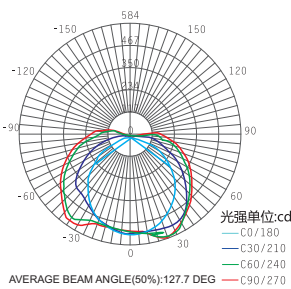
NEW-FBY006

Luminous Efficiency	133 lm/W
CCT	3000 / 4000 / 6500K
CRI	≥ 80Ra
Operating Temperature	-20°C~+45°C
IP Rating	IP65
LED Lifespan	> 50,000 hrs

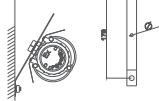
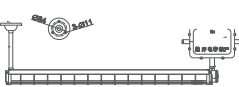
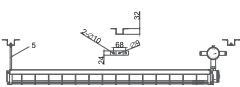
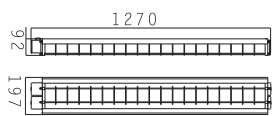
2x20 W AVERAGE AND CENTER E FIGURE



2x20W LUMINOUS INTENSITY DISTRIBUTION



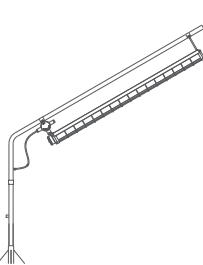
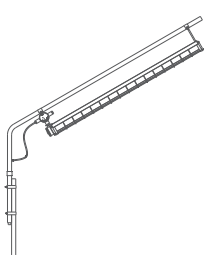
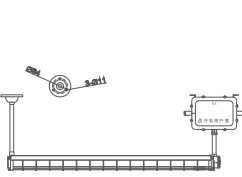
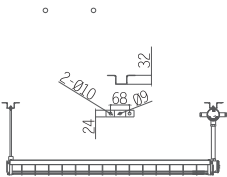
Dimension(mm)& Fixture Installation



A Ceiling

B Tube

C Wall



D Ceiling

E Ceiling

F Fence

H Flange

Features

Aluminium alloy Enclosure, high voltage electrostatic powder coated after shot blasted.  
High strength toughened glass cover. BPY easy maintenance Explosion proof LED lamp  
Exposed fasteners are of stainless steel with function of high corrosion-proof.  
With grids to adjust lighting effect and reduce the glare.  
Modular plug structure design, only need disconnect end cover draw out core to change tubes.  
For fitting with emergency unit, It will automatically turn to emergency lighting when power circuit failed.  
Inside the emergency unit designed with over charging and over discharging protection circuit.  
Screw connection type, for easy installation and maintenance.  
Power factor can be over 0.95.  
Steel conduit or cable wiring.

Application

Suitable for explosive gas environment Zone1 and Zone2.  
Suitable for IIA,IIB,IIC explosive gas environment.  
Suitable for Hazardous dust area: Zone20, Zone21, Zone22.  
Can be used in the environment of temperature group for T1~T6.  
Lighting source: T8 tube.  
Designed for petroleum explosion, refinery, storage, chemistry, medicine, military etc. sites with potential explosive atmosphere.

Technical Parameters

Meet a criterion:G3B3836.1, GB3836.2, GB12476.1, IEC60079-0,IEC60079-1, IEC61241-1, EN60079-0, EN60079-1, EN61241-1  
Ex--proof Mark: Exd II BT6 Gb, Exd II CT6 Gb, DIP A21 TA, T6.  
Lighting Source: 2x8W , 2x18W  
Protection grade:IP54, IP65, IP66\*( If need IP66, need to info us)  
Corrosion-proof grade:WF1  
Inlet Thread: G1/2" BPY easy maintenance Explosion proof LED lamp lighting fixture  
Cable outer dia:6mm~10mm  
Battery charging time:≤24h  
Emergency Start time:≤0.3s  
Emergency lighting duration:≥90min