



## ZY-V5B LED FLOOD LIGHT



### Specifications

Efficiency	140lm/W
Input Voltage	AC 100 ~ 277V
PF	> 0.95
LED	SAN'AN
Driver	MOSO
CCT	3000K / 4000K / 5000K / 5700K / 6500K
CRI	70Ra
Beam Angle	24° / 36° / 60° / 90° / 145° x 100°
Rated Life	50,000Hrs
IP / IK	IP66 / IK10
Operating Temperature	-40°C ~ +50°C
Material	Aluminium 6063-T5 (body) Polycarbonate (lens)

### Features:

- Exclusive zero air gap lens technology, achieve zero light loss. Light transmission rate reaches 98%.
- Use cooling duct design, product overall weight reduction and thermal performance.
- Modular design can effectively reduce maintenance cost.
- Over-current, over-voltage, lightning, high temperature protection to fully guarantee the lifespan and stable performance.
- Built-in surge protection 5kV (line-line), 10kV (line-earth)

### Applications:

Ideal for compound lighting, building, industrial areas, warehouse, and advertisement board.

### Compliance Standard:

LED	LM-80
Driver	CCC, CE, ENEC, CB, UL, CUL, SAA EN61347, EN55015, EN61000, EN61547

Model	Power	Lumen	Weight
VSL-ZY-V5B1-50	50W	7,000Lm	3.2kg
VSL-ZY-V5B2-100	100W	14,000Lm	4.3kg
VSL-ZY-V5B3-150	150W	21,000Lm	5.2kg
VSL-ZY-V5B4-200	200W	28,000Lm	6.8kg
VSL-ZY-V5B5-250	250W	35,000Lm	8.0kg
VSL-ZY-V5B5-300	300W	42,000Lm	9.2kg
VSL-ZY-V5B5-400	400W	56,000Lm	13.0kg
VSL-ZY-V5B5-500	500W	70,000Lm	15.2kg
VSL-ZY-V5B5-600	600W	84,000Lm	17.6kg

# External Design Features



Standard

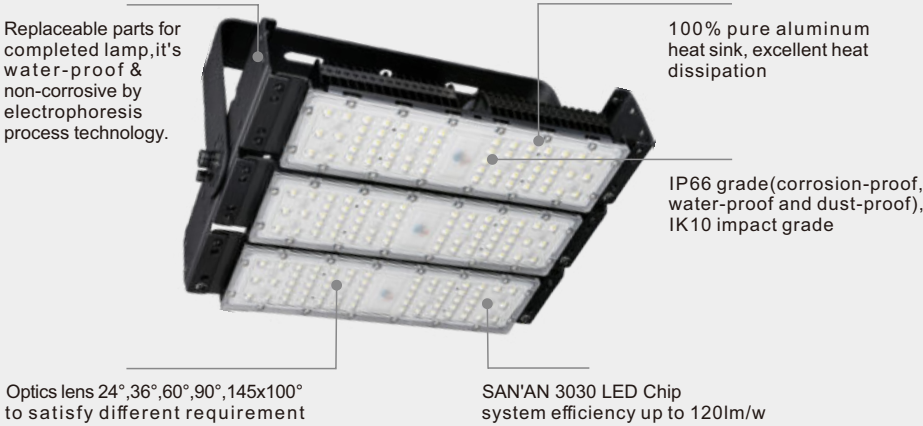


Add Frame

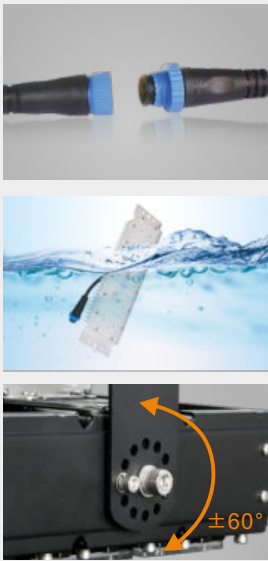


Add Frame&Back Cover

## Product Details



## Module IP66 Whole Lamp



## High efficiency



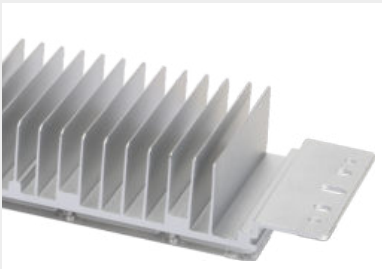
### LED Source

Use customized chip from TOP 5 LED chip manufacturer, 3030 LEDs provide very excellent heat uniformity.



### Beam Angles

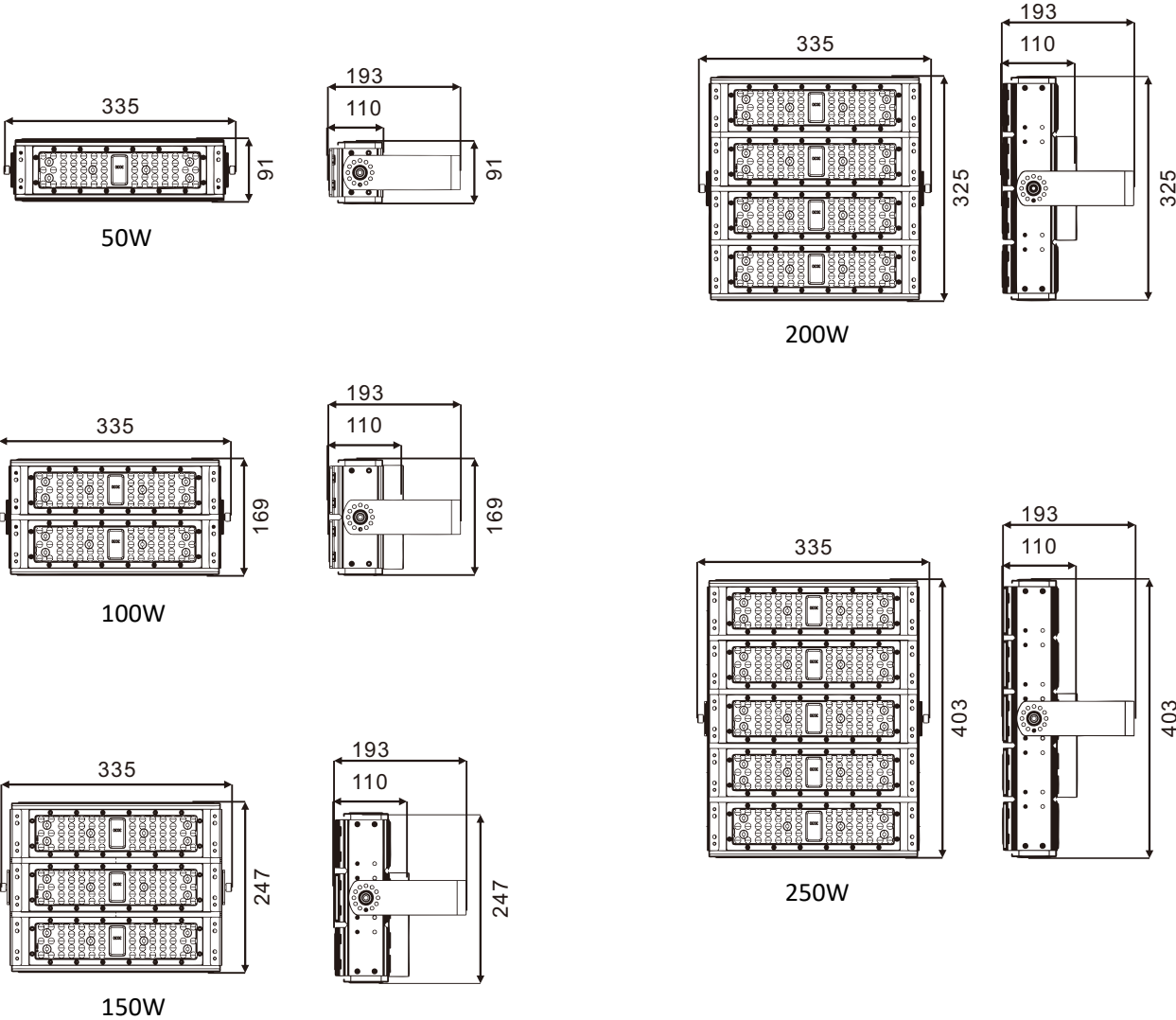
24°, 36°, 60°, 90°, 145x100° Suitable for street light, tunnel light, high bay light, flood light etc.



### Lower Weight

Ultra-thin fin heat dissipation structure reduces the weight of the module while satisfying the heat dissipation.

Dimension



Photometric

