

T8 NANO PC LED TUBE

8W (2FT) / 18W (4FT)

Features:

- Impact resistant Nano PC tube, high transmission, excellent light uniformity.
- Withstand high temperature and not easy to deform, degrade and discoloration.
- High thermal conductivity / dissipation compare to conventional PC tube.
- Superior natural light and visual effect, frosted cover ensure anti-glare and soft light.
- Direct replace conventional T8 fluorescent lamp without replace its original fixture.
- Non-flickering, less strain on eye and smooth CCTV recording.
- Electric shock protection, no UV or IR radiation.

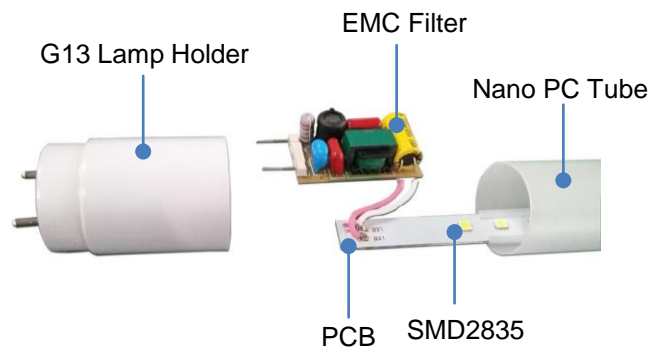
Applications:

Ideal for indoor application such as production area, warehouse, factory, shopping malls, exhibition halls, car park, residential, office, etc.

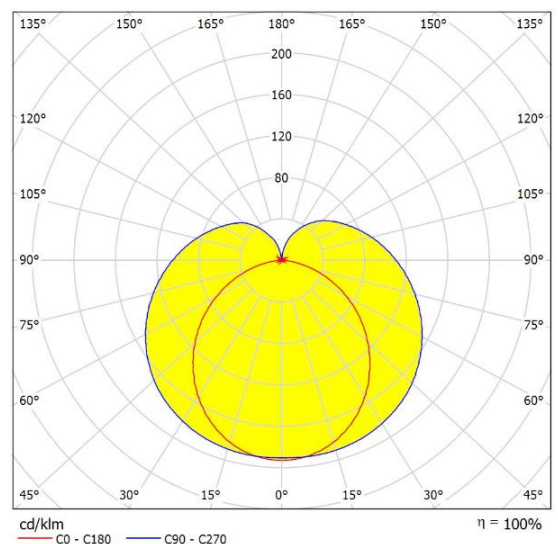


Specifications

Model	VSL-LT08PCT8-DE-V1 (8W) VSL-LT18PCT8-DE-V1 (18W)
Power	8W / 18W
Lumen	1100lm / 2400lm
Efficiency	133lm/W
Input Voltage	AC 85~265V
Frequency	50/60Hz
PF	>0.95
LED	EPISTAR 2835
CCT	3000K / 4000K / 6500K
CRI	>80Ra
Beam Angle	300°
Rated Life	50,000Hrs
Operating Temperature	-20°C ~ +45°C
Material	Nano Polycarbonate (PC)
Cover Type	Frosted
Lamp Socket	G13
Dimension	Ø26x600mm / Ø26x1200mm
Wiring Type	Double-ended
Compliance	CE, RoHS, LM-80



Photometric



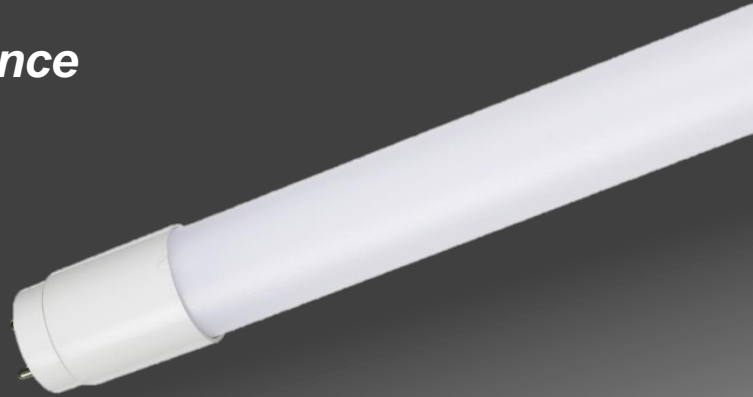
T8 NANO PC LED TUBE



8W (2FT) / 18W (4FT)

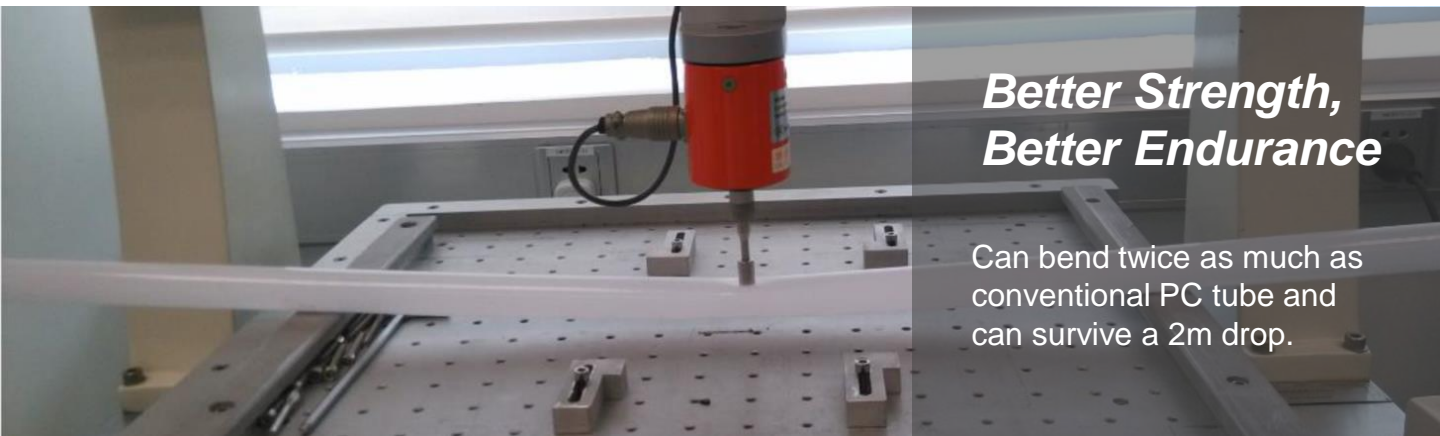
It has better light transmittance and the light emits softer

With a luminous efficiency of 92%, 5%~12% higher than conventional PC tube.



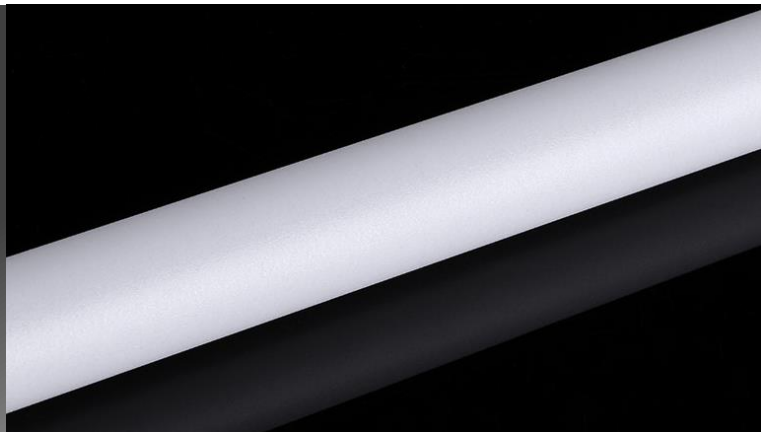
Better Strength, Better Endurance

Can bend twice as much as conventional PC tube and can survive a 2m drop.



Anti-aging and non-discoloring

Nano-PC is imbued with low CTE resins preventing aging and discoloration



Light weight and better heat dissipation

Nano-PC has super thermal conductivity. Additionally the internal holes can release a great amount of heat from the tube light.

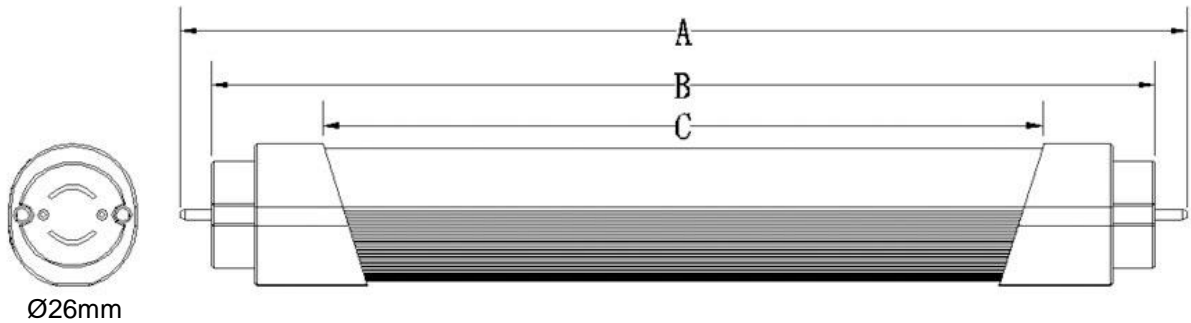


T8 NANO PC LED TUBE



8W (2FT) / 18W (4FT)

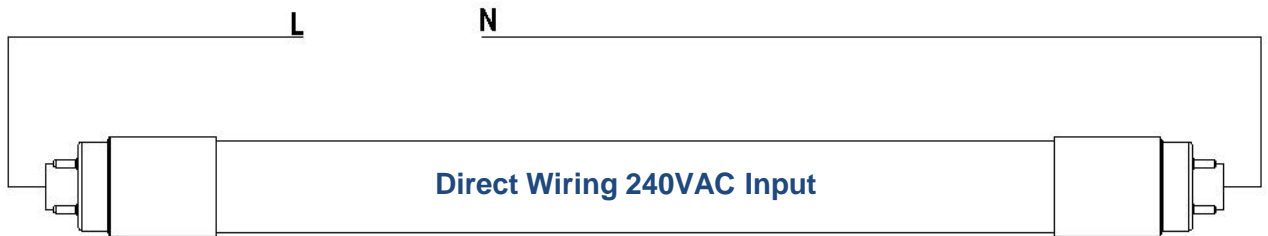
Dimension



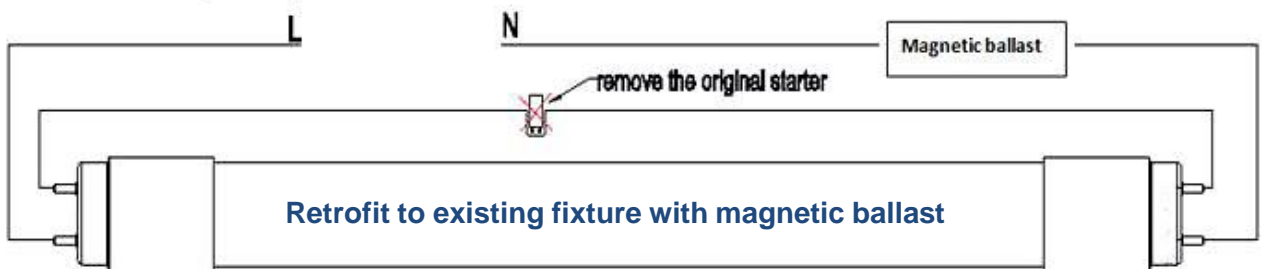
Length	A	B	C
0.6m	602mm	588mm	551mm
1.2m	1212mm	1198mm	1161mm

Wiring Installation Method

Method 1



Method 2



T8 NANO PC LED TUBE



8W (2FT) / 18W (4FT)

